

## MUCOSAL RESECTION

1. A mucosal resection specimen measuring XXX cm is received, oriented with X marking the X aspect // without orientation provided.
2. Externally, a lesion measuring XXX cm is identified, located X cm from the anterior / posterior / lateral / medial / right / left margin.
3. The lesion has a flat / ulcerated / exophytic morphology, with an indurated / soft-elastic consistency and a whitish / brownish coloration, etc.
4. The surgical margins are inked.
5. On sectioning, the lesion shows a thickness of X cm and is located X cm from the deep margin.
6. The cut surface is homogeneous / heterogeneous, with well / poorly defined borders and a whitish / brownish coloration, etc.
7. Representative sections are submitted.

### **1st Example (Buccal mucosal resection for squamous cell carcinoma):**

- A1: left lateral margin, en face.
- A2: right lateral margin, en face.
- A4 – A6: central sections of the specimen.

### **2nd Example (Soft palate mucosal resection for salivary gland carcinoma):**

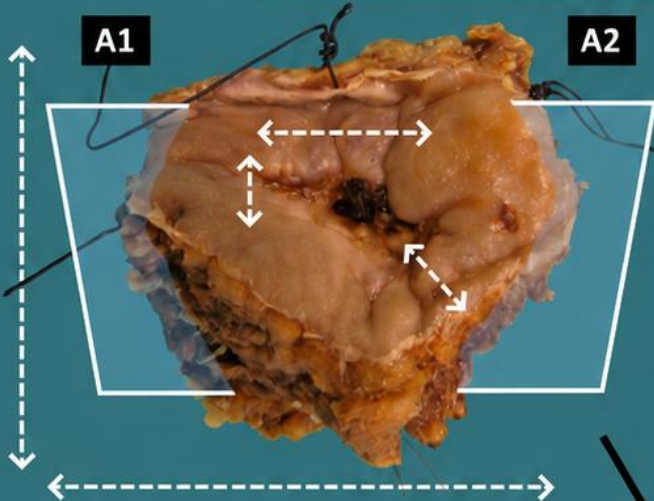
- A1: anterior margin, en face.
- A2: posterior margin, en face.
- A3 – A4: one complete section of the lesion.
- A5 – A6: second complete section of the lesion.

## TO CONSIDER

- Partial resections of the oral cavity mucosa, generally performed for neoplastic lesions (dysplasia or squamous cell carcinoma).
- Orient the specimen according to the surgical markers provided.
- Measure and describe both the specimen and the lesion, including the distance to the resection margins.
- Ink the margins (the use of more than one colour or notches is recommended).
- Serially section the specimen along the short axis; measure lesion thickness and distance to the deep margin.
- Submit representative sections:
  - Include the deep margin and the four lateral margins (anterior, posterior, left, and right).
  - Include a couple of sections of the lesion (at least one section per centimetre of the greatest dimension of the lesion).



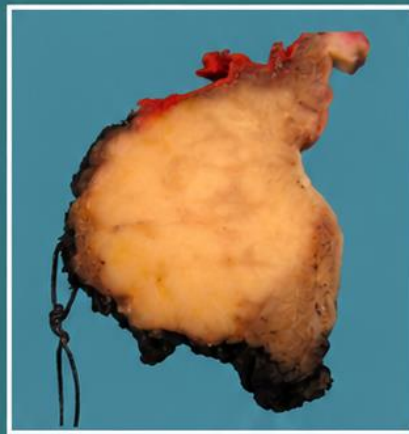
## Mucosectomy for Squamous Cell Carcinoma in the Buccal Mucosa



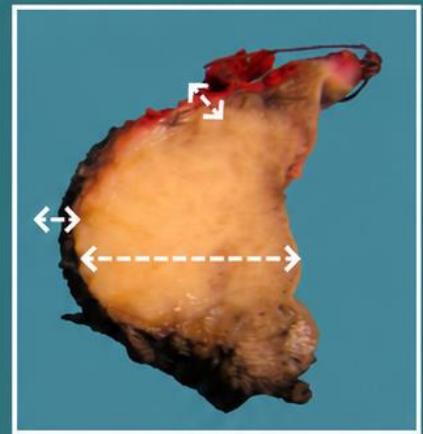
1. Measure and orientate the specimen
2. Locate and measure the lesion and the distance to the surgical margins
3. Describe the lesion morphologically
4. Indicate the surgical margin
5. Serially section; indicate the thickness of the lesion and the distance to the deep margin
6. Describe the cut surface of the lesion
7. Include representative sections



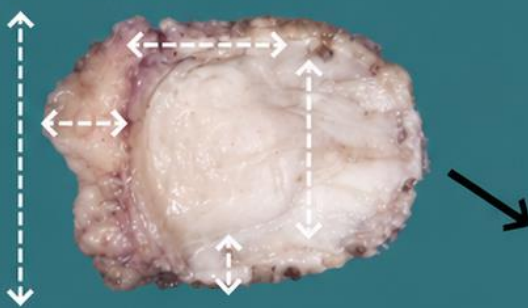
A3



A4

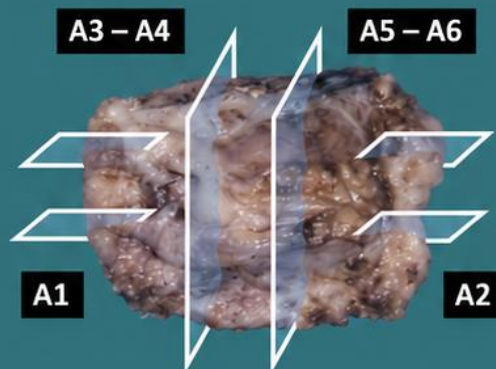


A5



Shave (Partial Thickness) Resection

*Emilio D. Abecia*

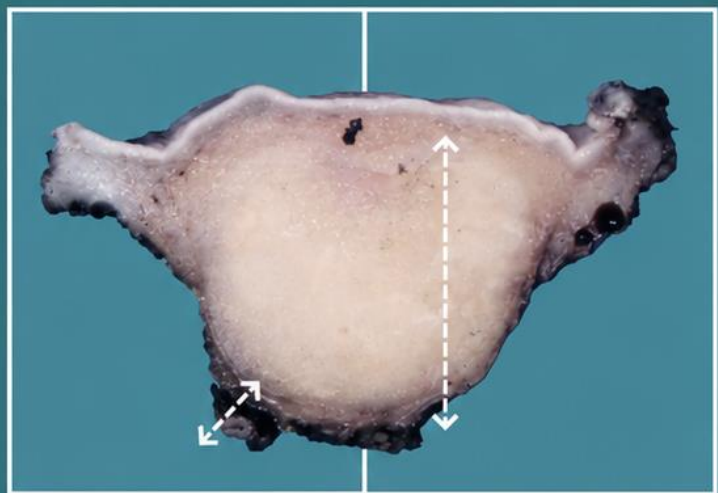


A3 - A4

A5 - A6

A1

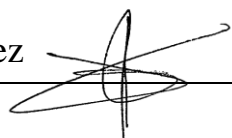
A2



A5

A6

A Full Thickness Section of the Specimen



## BIBLIOGRAPHY

- Seethala R.R., Bishop J.A., Faquin W.C., Hui Huang S., Katabi N., Lydiatt W., O'Sullivan B., Patel S., Pettus J.R, Williams L. (September 2023). *Pharynx* (v4.3.0.0). College of American Pathologists (CAP). Recuperado el 13 de Mayo de 2024:  
[https://documents.cap.org/protocols/HN.Pharynx\\_4.3.0.0.REL\\_CAPCP.pdf?\\_gl=1\\*h2tafb\\*\\_ga\\*MTc4Nzk0MDczNC4xNzE0NDczNzAy\\*\\_ga\\_97ZFJSQQ0X\\*MTcxNDQ3MzcwMi4xLjEuMTcxNDQ3NDExMy4wLjAuMA](https://documents.cap.org/protocols/HN.Pharynx_4.3.0.0.REL_CAPCP.pdf?_gl=1*h2tafb*_ga*MTc4Nzk0MDczNC4xNzE0NDczNzAy*_ga_97ZFJSQQ0X*MTcxNDQ3MzcwMi4xLjEuMTcxNDQ3NDExMy4wLjAuMA)
- Cipriani N., Rose S. (2019). *Tongue / Mucosal Excision (Head & Neck)*. Gross Pathology Manual (University Of Chicago). Recuperado el 13 de Mayo de 2024:  
<https://voices.uchicago.edu/grosspathology/head-neck/tongue/>
- *Head & Neck Mucosal Biopsies (Head and Neck)*. Gross Manual. UCLA Health. Recuperado el 13 de Mayo de 2024:  
<https://www.uclahealth.org/sites/default/files/documents/HeadandNeckMucosalBiopsy060319.pdf>
- Cipriani N., Rose S. (2019). *Oral Biopsies (Head & Neck)*. Gross Pathology Manual (University Of Chicago). Recuperado el 13 de Mayo de 2024:  
<https://voices.uchicago.edu/grosspathology/head-neck/oral-biopsies/>
- Seethala R.R., Bishop J.A., Faquin W.C., Hui Huang S., Katabi N., Lydiatt W., O'Sullivan B., Patel S., Pettus J.R, Williams L. (2023). *Oral Cavity* (v4.2.0.0). College of American Pathologists (CAP). Recuperado el 13 de Mayo de 2024:  
[https://documents.cap.org/protocols/HN.Oral\\_4.2.0.0.REL\\_CAPCP.pdf?\\_gl=1\\*h2tafb\\*\\_ga\\*MTc4Nzk0MDczNC4xNzE0NDczNzAy\\*\\_ga\\_97ZFJSQQ0X\\*MTcxNDQ3MzcwMi4xLjEuMTcxNDQ3NDExMy4wLjAuMA](https://documents.cap.org/protocols/HN.Oral_4.2.0.0.REL_CAPCP.pdf?_gl=1*h2tafb*_ga*MTc4Nzk0MDczNC4xNzE0NDczNzAy*_ga_97ZFJSQQ0X*MTcxNDQ3MzcwMi4xLjEuMTcxNDQ3NDExMy4wLjAuMA)
- WHO Classification of Tumours Editorial Board (2024). *Head and Neck Tumours* (5th ed., vol. 9). International Agency for Research on Cancer. <https://publications.iarc.fr/Book-And-Report-Series/Who-Classification-Of-Tumours/Head-And-Neck-Tumours-2024>
- Lemos, M. B., & Okoye, E. (2019). *Atlas of Surgical Pathology Grossing*. Springer Nature Switzerland AG. <https://link.springer.com/book/10.1007/978-3-030-20839-4>
- Susan C. Lester, French, C. A., & Curtis, S. G. (2010). *Manual of Surgical Pathology: Expert Consult* (ed. 3). Elsevier. <https://www.sciencedirect.com/book/9780323065160/manual-of-surgical-pathology>
- Shameem Shariff. (2019). *Fundamentals of Surgical Pathology* (ed.2). Jaypee Brothers Medical Publishers. <https://www.jaypeedigital.com/book/9789388958967>
- Westra, W. H., Ralph H. Hruban, Timothy H. Phelps, & Christina Iacon. (2003). *Surgical Pathology Dissection: An Illustrated Guide* (ed.2). Springer. <https://link.springer.com/book/10.1007/b97473>

## DISCLAIMER

The image and text are provided for illustrative purposes only. The tissue sections submitted and the description provided will depend on the individual specimen characteristics, the clinical diagnostic suspicion, the experience of the dissector, and the institutional guidelines of the laboratory.

This document has been translated from the original Spanish version using AI-based tools. The text may contain typographical errors or inaccurate translations.

