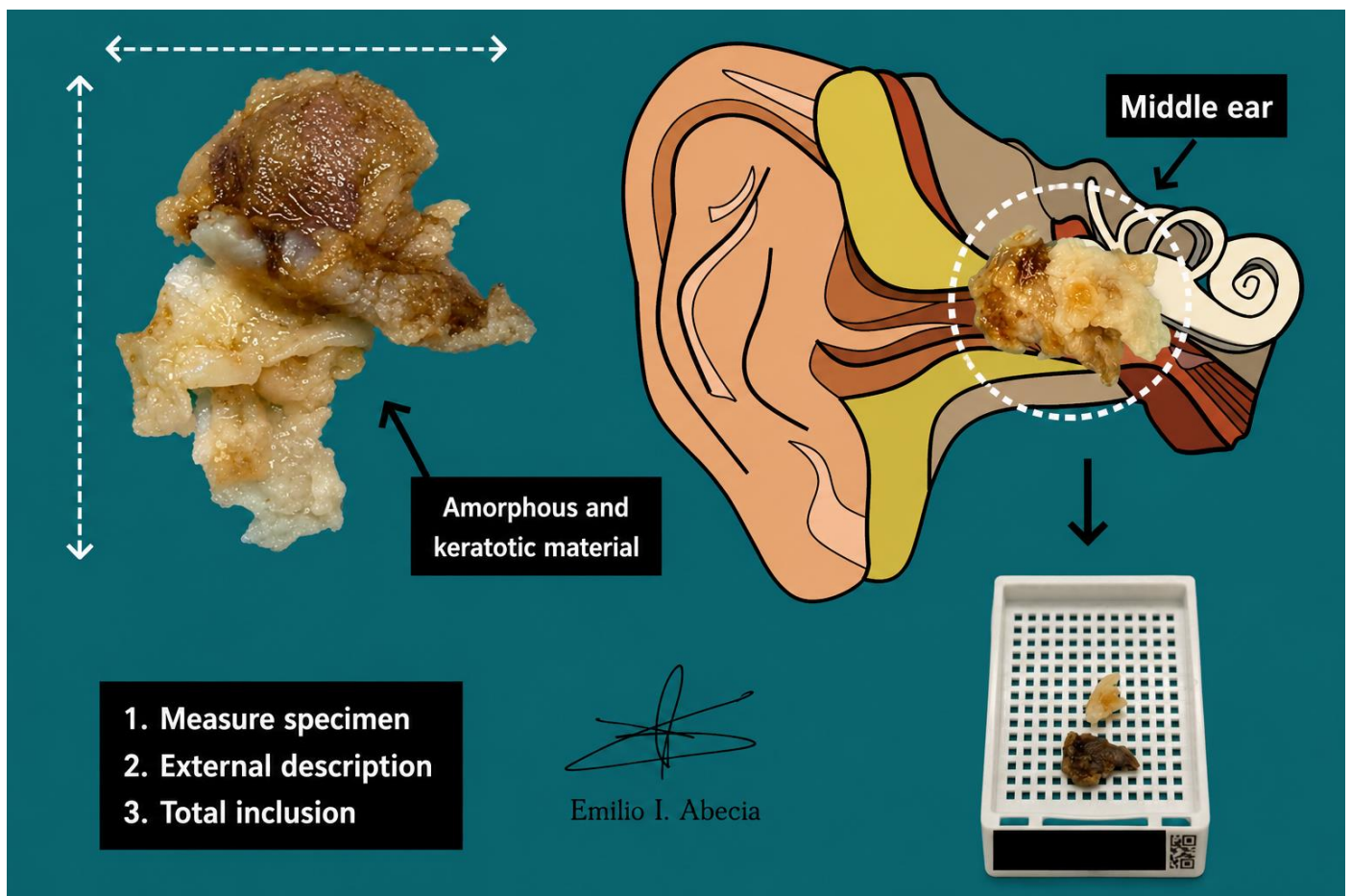


CHOLESTEATOMA

1. Received labelled as X are one / several fragments measuring XXX cm in aggregate.
2. Externally, the specimen shows a brownish / whitish coloration, with an irregular surface and a keratotic / crusted appearance // indurated fragments with a bony appearance are identified.
3. The specimen is entirely submitted in X blocks.

TO CONSIDER

- Histologically benign lesion that may behave in a locally aggressive manner within the middle ear or mastoid. Surgical treatment is required.
- The specimen is frequently received in multiple fragments, as it is friable and tends to fragment during handling.
- Measure and describe the specimen.
- Inking of the external surface is not required (assessment of surgical margins is unreliable).
- Bony fragments may be present if local destruction has occurred.
- Submit the specimen entirely for histological examination.



BIBLIOGRAPHY

- *Head & Neck Mucosal Biopsies (Head and Neck)*. Gross Manual. UCLA Health. Recuperado el 13 de Mayo de 2024: <https://www.uclahealth.org/sites/default/files/documents/HeadandNeckMucosalBiopsy060319.pdf>
- Lemos, M. B., & Okoye, E. (2019). *Atlas of Surgical Pathology Grossing*. Springer Nature Switzerland AG. <https://link.springer.com/book/10.1007/978-3-030-20839-4>
- Susan C. Lester, French, C. A., & Curtis, S. G. (2010). *Manual of Surgical Pathology: Expert Consult* (ed. 3). Elsevier. <https://www.sciencedirect.com/book/9780323065160/manual-of-surgical-pathology>
- Shameem Shariff. (2019). *Fundamentals of Surgical Pathology* (ed.2). Jaypee Brothers Medical Publishers. <https://www.jaypeedigital.com/book/9789388958967>
- Westra, W. H., Ralph H. Hruban, Timothy H. Phelps, & Christina Iacson. (2003). *Surgical Pathology Dissection: An Illustrated Guide* (ed.2). Springer. <https://link.springer.com/book/10.1007/b97473>

DISCLAIMER

The image and text are provided for illustrative purposes only. The tissue sections submitted and the description provided will depend on the individual specimen characteristics, the clinical diagnostic suspicion, the experience of the dissector, and the institutional guidelines of the laboratory.

This document has been translated from the original Spanish version using AI-based tools. The text may contain typographical errors or inaccurate translations.

