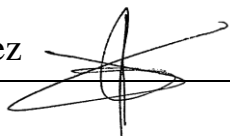
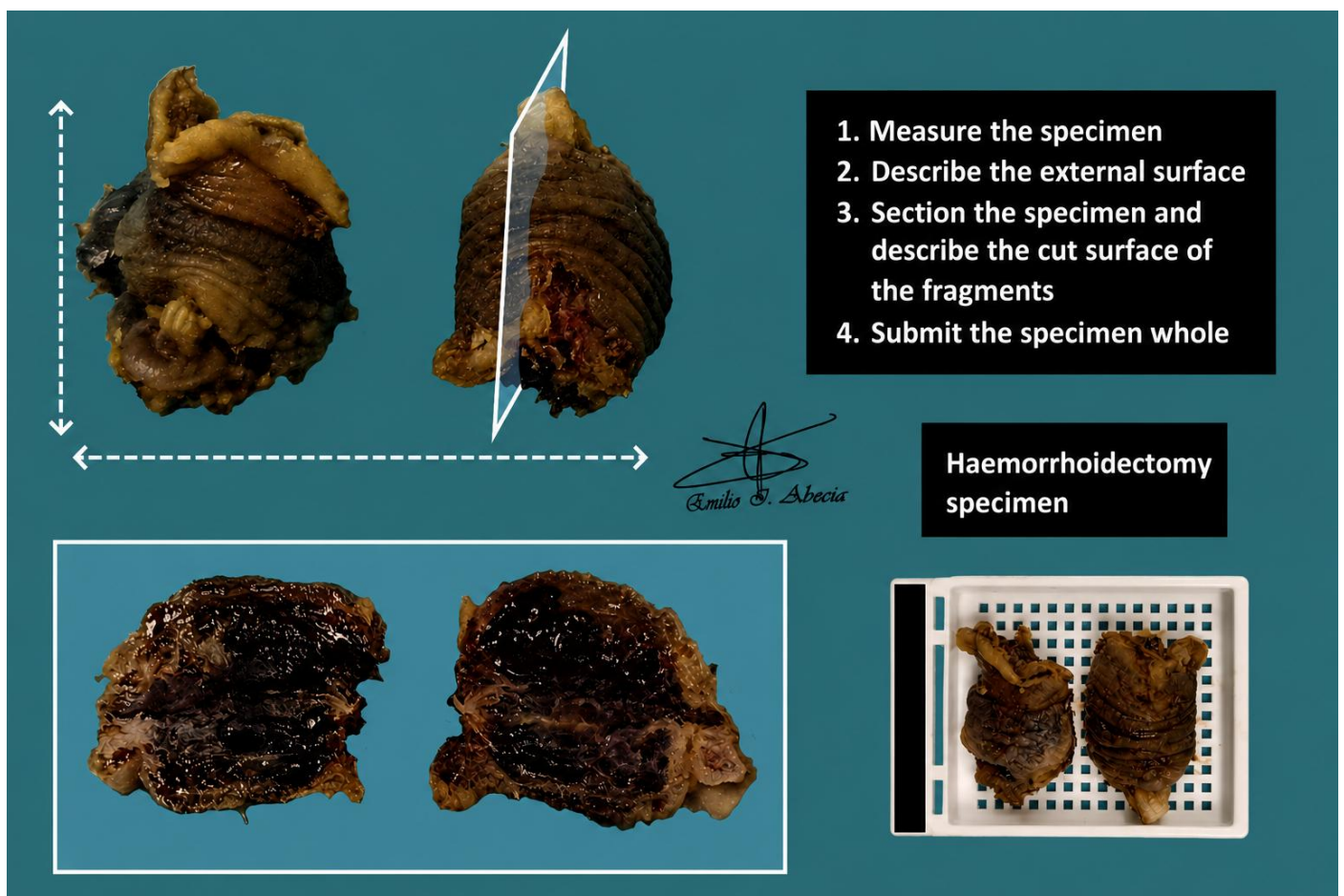


HAEMORRHOIDECTOMY

1. A haemorrhoidectomy specimen composed of X nodules measuring XXX cm is received // X tissue fragments ranging from X to X cm are received.
2. Externally, no remarkable features are identified // the specimen shows a brownish / congestive-haemorrhagic coloration and a soft-elastic / partially indurated consistency.
3. On sectioning, the cut surface shows a haemorrhagic / fibrous / congestive / etc. appearance.
4. Representative sections / the entire specimen are submitted in one / two blocks.

TO CONSIDER

- Frequent resections of nodules from the anal or distal rectal region.
- Measure and describe the external surface.
- Serially section and describe the cut surface.
- Submit one representative section / entirely submit each haemorrhoidal nodule.



BIBLIOGRAPHY

- *Hemorrhoidectomy (Gastrointestinal)*. Gross Manual. UCLA Health. Recuperado el 13 de Mayo de 2024: <https://www.uclahealth.org/sites/default/files/documents/c9/hemorrhoid-13023.pdf?f=4320fa2b>
- Lemos, M. B., & Okoye, E. (2019). *Atlas of Surgical Pathology Grossing*. Springer Nature Switzerland AG. <https://link.springer.com/book/10.1007/978-3-030-20839-4>
- Susan C. Lester, French, C. A., & Curtis, S. G. (2010). *Manual of Surgical Pathology: Expert Consult* (ed. 3). Elsevier. <https://www.sciencedirect.com/book/9780323065160/manual-of-surgical-pathology>
- Shameem Shariff. (2019). *Fundamentals of Surgical Pathology* (ed.2). Jaypee Brothers Medical Publishers. <https://www.jaypeedigital.com/book/9789388958967>
- Westra, W. H., Ralph H. Hruban, Timothy H. Phelps, & Christina Iacson. (2003). *Surgical Pathology Dissection: An Illustrated Guide* (ed.2). Springer. <https://link.springer.com/book/10.1007/b97473>

DISCLAIMER

The image and text are provided for illustrative purposes only. The tissue sections submitted and the description provided will depend on the individual specimen characteristics, the clinical diagnostic suspicion, the experience of the dissector, and the institutional guidelines of the laboratory.

This document has been translated from the original Spanish version using AI-based tools. The text may contain typographical errors or inaccurate translations.

