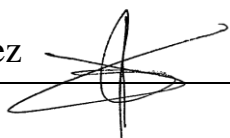
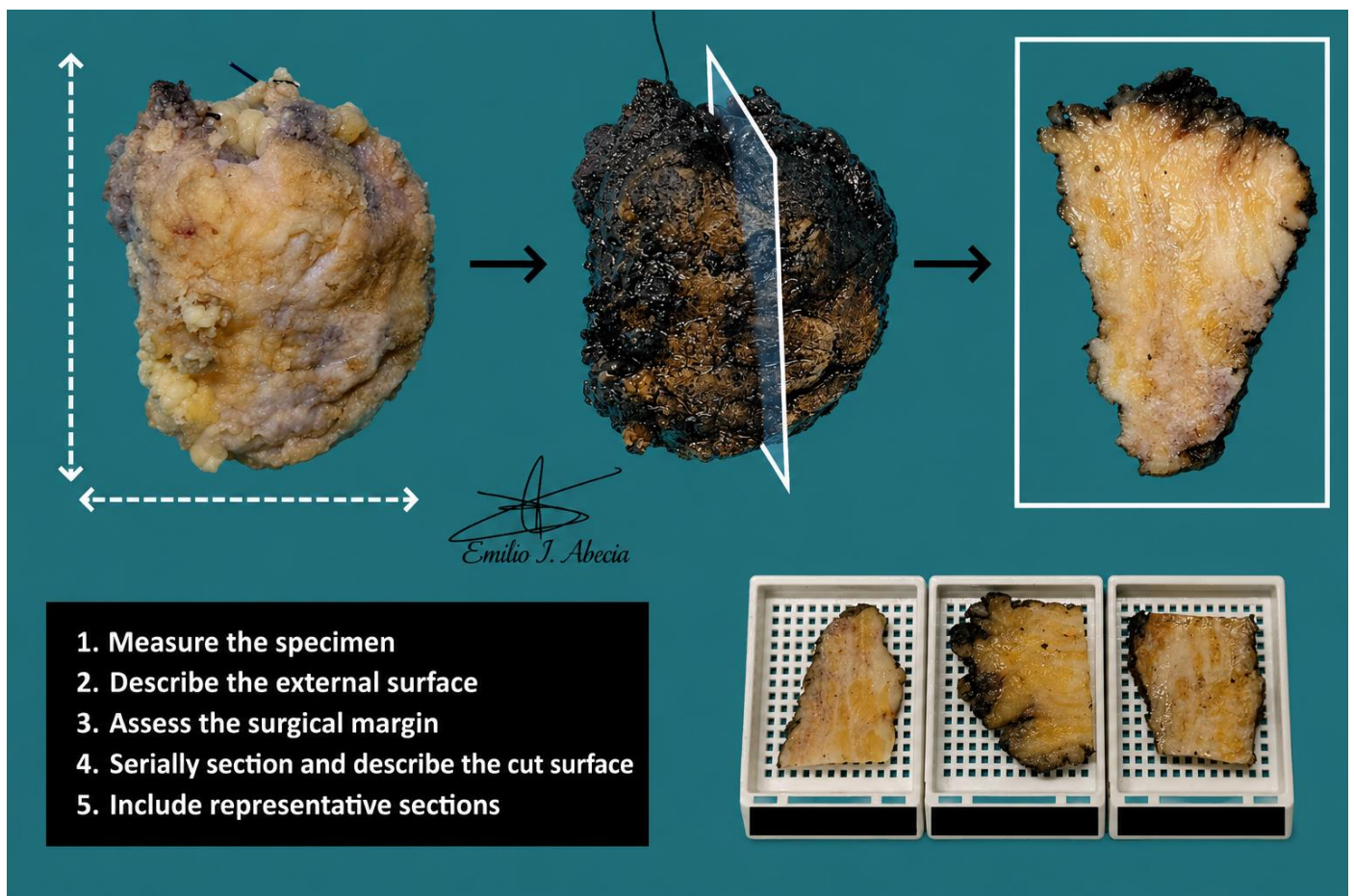


ELASTOFIBROMA

1. A specimen labelled as X is received, weighing X g and measuring XXX cm.
2. Externally, the specimen shows a soft-elastic consistency and an irregular / multilobulated surface, with a yellowish / brownish coloration.
3. The external surface is inked.
4. On serial sectioning, the cut surface is whitish / yellowish / homogeneous / heterogeneous, with a fibrous / fasciculated appearance, etc.
5. Representative sections are submitted in X blocks.

POINTS TO CONSIDER

- Tumourectomy specimen of a benign mesenchymal lesion with abundant elastic fibres. This is a relatively common surgical specimen in hospital practice, with limited prognostic significance.
- Measure the specimen, describe the external surface, and ink the surgical margin.
- Serially section and describe the cut surface.
- Submit representative sections:
 - As a rule, at least one section per centimetre of the greatest dimension of the lesion.
 - If atypical foci are identified, thoroughly sample these areas and include their relationship to the surgical margin.



BIBLIOGRAPHY

- *Soft Tissue Resection (Bone and Soft Tissue)*. Gross Manual. UCLA Health. Recuperado el 13 de Mayo de 2024: <https://www.uclahealth.org/sites/default/files/documents/cc/soft-tissue-resection-122022.pdf?f=98912376>
- Cipriani N., Rose S. (2019). *Soft Tissue Tumor (Bone & Soft Tissue)*. Gross Pathology Manual (University Of Chicago). Recuperado el 13 de Mayo de 2024: <https://voices.uchicago.edu/grosspathology/bone-soft-tissue/soft-tissue-tumor/>
- WHO Classification of Tumours Editorial Board (2020). *Soft Tissue and Bone Tumours* (5th ed.; vol. 3). International Agency for Research on Cancer. <https://publications.iarc.fr/Book-And-Report-Series/Who-Classification-Of-Tumours/Soft-Tissue-And-Bone-Tumours-2020>
- Lemos, M. B., & Okoye, E. (2019). *Atlas of Surgical Pathology Grossing*. Springer Nature Switzerland AG. <https://link.springer.com/book/10.1007/978-3-030-20839-4>
- Susan C. Lester, French, C. A., & Curtis, S. G. (2010). *Manual of Surgical Pathology: Expert Consult* (ed. 3). Elsevier. <https://www.sciencedirect.com/book/9780323065160/manual-of-surgical-pathology>
- Shameem Shariff. (2019). *Fundamentals of Surgical Pathology* (ed.2). Jaypee Brothers Medical Publishers. <https://www.jaypeedigital.com/book/9789388958967>
- Westra, W. H., Ralph H. Hruban, Timothy H. Phelps, & Christina Iacson. (2003). *Surgical Pathology Dissection: An Illustrated Guide* (ed.2). Springer. <https://link.springer.com/book/10.1007/b97473>

DISCLAIMER

The image and text are provided for illustrative purposes only. The tissue sections submitted and the description provided will depend on the individual specimen characteristics, the clinical diagnostic suspicion, the experience of the dissector, and the institutional guidelines of the laboratory.

This document has been translated from the original Spanish version using AI-based tools. The text may contain typographical errors or inaccurate translations.

