

SKIN PUNCH BIOPSY

1. A specimen labelled as X measuring XXX cm is received // multiple fragments measuring XXX cm in aggregate are received.
2. Externally, no remarkable features are identified // the external surface is polylobulated / crusted / irregular, with a brownish / whitish coloration and a soft / indurated / soft-elastic / etc. consistency.
3. On bisection, the cut surface is homogeneous / heterogeneous, with well / poorly defined borders / showing X characteristics.
4. Representative sections are submitted as follows:

1st Example (Punch biopsy for inflammatory pathology):

- A1: entirely submitted, bisected, in one block.

2nd Example (Punch biopsy for dysplastic naevus):

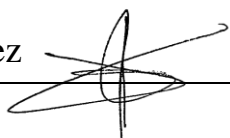
- A1: entirely submitted in one block.

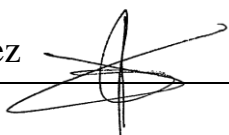
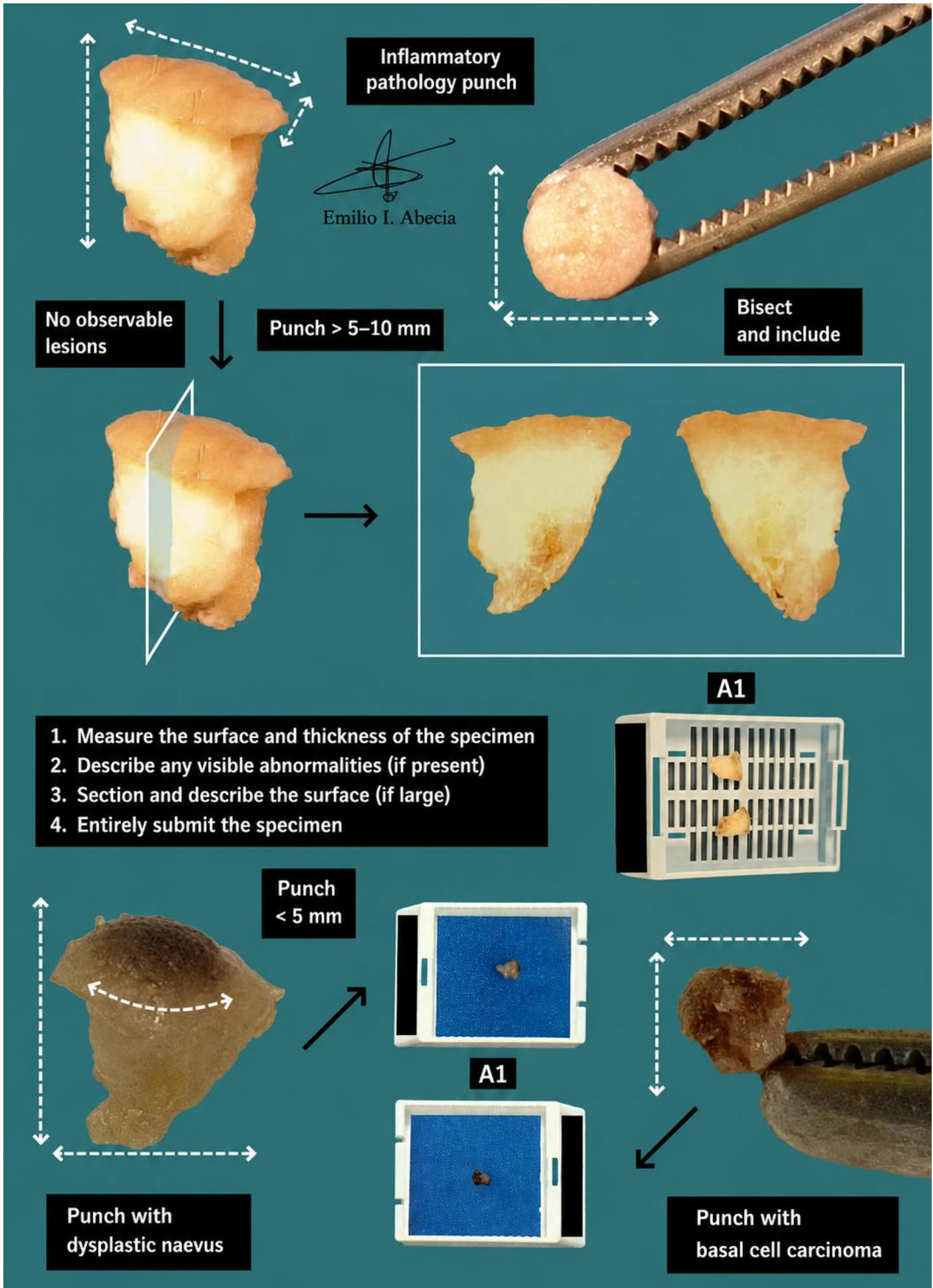
3rd Example (Punch biopsy for basal cell carcinoma):

- A1: entirely submitted in one block.

TO CONSIDER

- Skin punch biopsies are diagnostic procedures without therapeutic intent regarding surgical margins and without spatial orientation.
- Measure and describe the external surface.
- Submit the specimen entirely:
 - If < 5 mm, submit entirely without manipulating the specimen.
 - If > 5–10 mm, bisect and submit entirely.
 - If sufficiently large (>10 mm), some specialists recommend serial sectioning into three slices.





BIBLIOGRAPHY

- Cipriani N., Rose S. (2019). *Punch Biopsy (Skin)*. Gross Pathology Manual (University Of Chicago). Recuperado el 13 de Mayo de 2024: <https://voices.uchicago.edu/grosspathology/skin/punch-biopsy/>
- *Skin Punch biopsy (Dermatopathology)*. Gross Manual. UCLA Health. Recuperado el 13 de Mayo de 2024: <https://www.uclahealth.org/sites/default/files/documents/e6/skin-punch-biopsy-11323.pdf?f=c40a948c>
- Shon W., Nagarajan P., Frishberg D.P., Gershenwald J., North J., Prieto V.G., Scolyer R.A., Flotte T.J., McCalmont T.H., Smoller B.R. (2023). *Invasive Melanoma of The Skin: Biopsy* (v1.0.0.0). College of American Pathologists (CAP). Recuperado el 13 de Mayo de 2024: https://documents.cap.org/protocols/Skin.Inv_Melanoma.Bx_1.0.0.0.REL_CAPCP.pdf?_gl=1*1av0k6b*_ga*MTc4Nzk0MDczNC4xNzE0NDczNzAy*_ga_97ZFJSQQ0X*MTcxNDQ3MzcwMi4xLjEuMTcxNDQ3NDExMy4wLjAuMA
- Smoller B.R., Bichakjian C., Brown J.A., Crowson A.N., Divaris D., Frishberg D.P., Gao L., Gershenwald J., McNiff J.M., Nghiem P., Prieto V.G., Scolyer R.A., Selim M.A., Shalin S.C., Taube J.M. (2021). *Merkel Cell Carcinoma* (v4.1.0.0). College of American Pathologists (CAP). Recuperado el 13 de Mayo de 2024: https://documents.cap.org/protocols/Skin.Merkel_4.1.0.0.REL_CAPCP.pdf?_gl=1*1av0k6b*_ga*MTc4Nzk0MDczNC4xNzE0NDczNzAy*_ga_97ZFJSQQ0X*MTcxNDQ3MzcwMi4xLjEuMTcxNDQ3NDExMy4wLjAuMA
- WHO Classification of Tumours Editorial Board (2018). *WHO Classification of Skin Tumours* (4th ed.; vol. 11). International Agency for Research on Cancer. <https://publications.iarc.fr/Book-And-Report-Series/Who-Classification-Of-Tumours/WHO-Classification-Of-Skin-Tumours-2018>
- *Esophagectomy (Gastrointestinal)*. UCLA Health. Gross Manual. Recuperado el 13 de Mayo de 2024: <https://www.uclahealth.org/sites/default/files/documents/d0/esophagectomy-21623.pdf?f=e3d67c74>
- Lemos, M. B., & Okoye, E. (2019). *Atlas of Surgical Pathology Grossing*. Springer Nature Switzerland AG. <https://link.springer.com/book/10.1007/978-3-030-20839-4>
- Susan C. Lester, French, C. A., & Curtis, S. G. (2010). *Manual of Surgical Pathology: Expert Consult* (ed. 3). Elsevier. <https://www.sciencedirect.com/book/9780323065160/manual-of-surgical-pathology>
- Shameem Shariff. (2019). *Fundamentals of Surgical Pathology* (ed.2). Jaypee Brothers Medical Publishers. <https://www.jaypeedigital.com/book/9789388958967>
- Westra, W. H., Ralph H. Hruban, Timothy H. Phelps, & Christina Iacson. (2003). *Surgical Pathology Dissection: An Illustrated Guide* (ed.2). Springer. <https://link.springer.com/book/10.1007/b97473>

DISCLAIMER

The image and text are provided for illustrative purposes only. The tissue sections submitted and the description provided will depend on the individual specimen characteristics, the clinical diagnostic suspicion, the experience of the dissector, and the institutional guidelines of the laboratory.

This document has been translated from the original Spanish version using AI-based tools. The text may contain typographical errors or inaccurate translations.

