

## CONJUNCTIVAL EXCISION

1. Labelled as right / left eye conjunctiva, a fragment measuring XXX cm is received, without orientation provided // oriented with X marking the X margin.
2. Externally, a translucent surface is identified, without other remarkable features // a lesion measuring XXX cm is identified, located X cm from the closest margin, with X characteristics.
3. The margin is inked with India ink (if the specimen is tumoral).
4. On sectioning, no well-defined lesions are identified // the lesion is located X mm from the inked margin and shows a homogeneous / heterogeneous cut surface, with a whitish / brownish / etc. coloration.
5. The specimen is entirely submitted as follows:

### 1st Example (Tumoral conjunctiva):

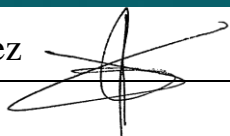
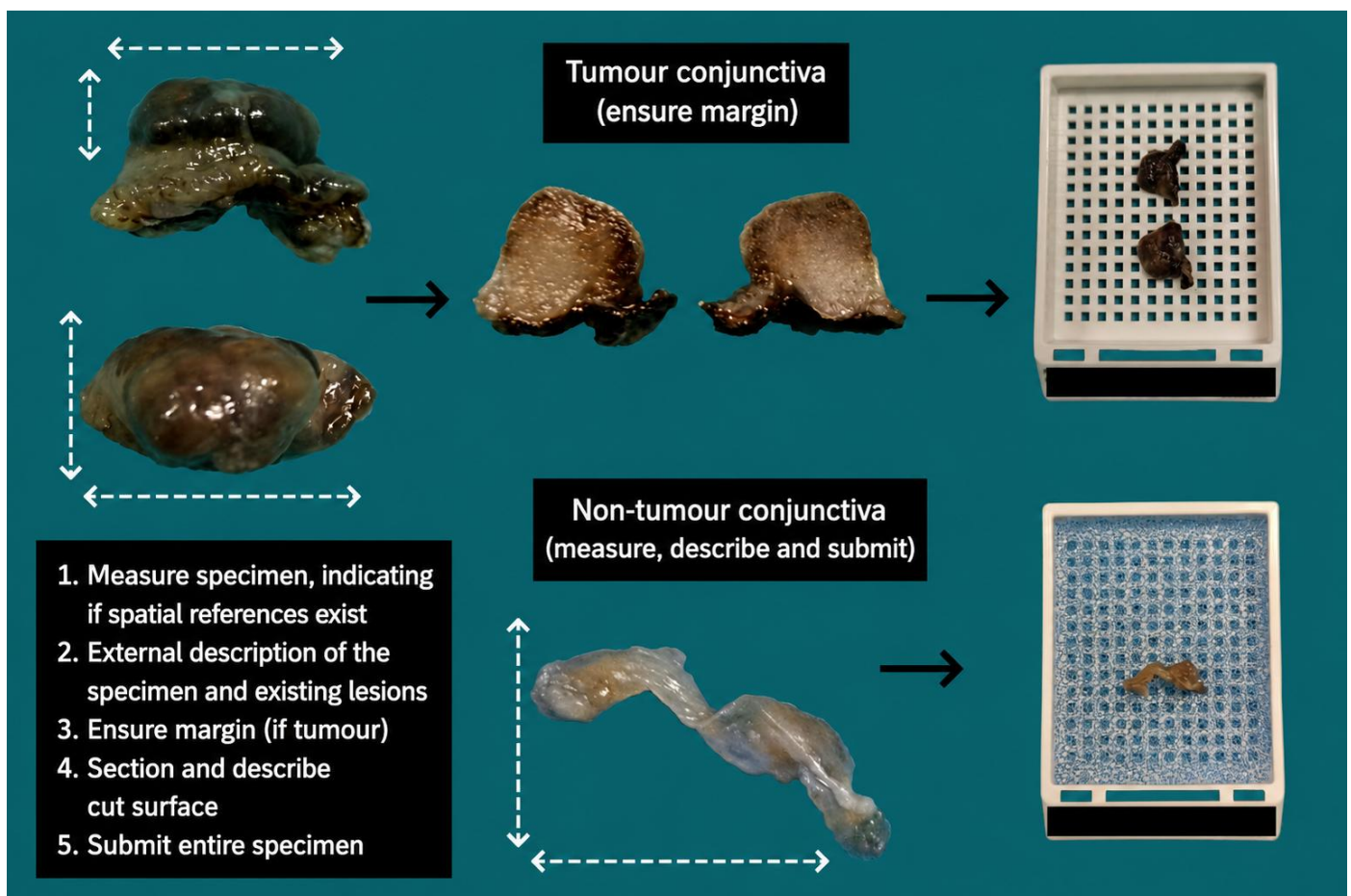
- A1: Entire specimen submitted bisected in one block.

### 2nd Example (Non-tumoral conjunctiva):

- A1: Entire specimen submitted in one block.

## TO CONSIDER

- Small specimens / biopsies from the ocular conjunctiva, generally performed for tumoral or inflammatory indications. It is recommended to review the clinical history to determine the indication for surgery and guide specimen dissection.
- Measure and orient the specimen, and indicate whether macroscopic lesions are present.
- Due to their small size, orientation may be technically challenging. It is recommended to ink the margins with more than two colours to facilitate orientation under the microscope.
- Section and describe the cut surface.
- Submit the specimen entirely.



## BIBLIOGRAPHY

- UCLA Health. Oriented Conjunctiva (Ophthalmic). Gross Manual. <https://www.uclahealth.org/sites/default/files/documents/Conjunctiva%2005.01.20.pdf>
- Lemos, M. B., & Okoye, E. (2019). Atlas of Surgical Pathology Grossing (Liang Cheng, Ed.). Springer Nature Switzerland AG.
- Susan C. Lester, French, C. A., & Curtis, S. G. (2010). Manual of Surgical Pathology: Expert Consult (Third). Elsevier.
- Shameem Shariff. (2010). Fundamentals of Surgical Pathology (First). Jaypee Brothers Medical Publishers.
- Westra, W. H., Ralph H. Hruban, Timothy H. Phelps, & Christina Iacson. (2003). Surgical Pathology Dissection: An Illustrated Guide (Second). Springer.

## DISCLAIMER

The image and text are provided for illustrative purposes only. The tissue sections submitted and the description provided will depend on the individual specimen characteristics, the clinical diagnostic suspicion, the experience of the dissector, and the institutional guidelines of the laboratory.

This document has been translated from the original Spanish version using AI-based tools. The text may contain typographical errors or inaccurate translations.

