

# 1860's Pelerine Pattern for a Little Girl

Designer: Jamie Quick

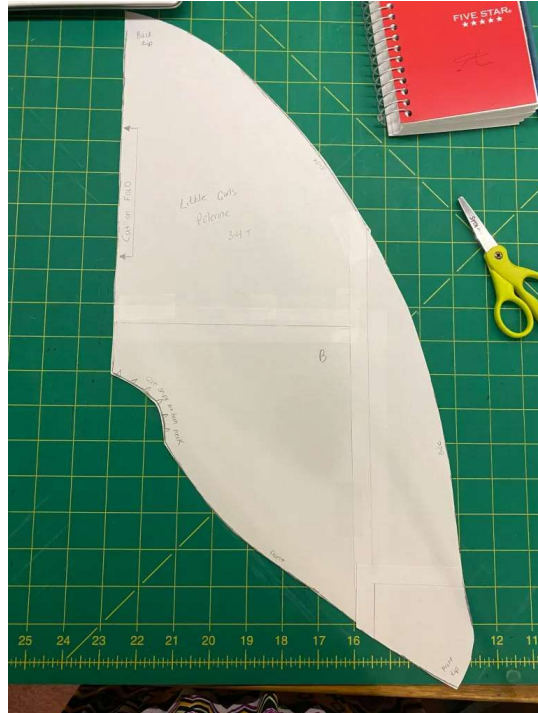


## Materials

- 1 Yard Fabric  
Fabric Options: Sheer Cotton, Silk Taffeta, and Wool Suiting would be fine. With those three fibers, the Pelerine would typically be the same fabric as the dress. If you want an accent color, then a warmer Pelerine made out of thicker wool would be more likely. If making a thicker Pelerine, you can line it!
- Hook and Eye for closure
- Trimmings
- Fringe, velvet, ruched or pleated self fabric or silk would be fine\

## Let's Start!

**Step 1:** Print the 4 page pattern to scale, then tape together.



**Step 2:** Create a mock up and test fit on your little one.

FITTING NOTES: Front and back point should come to about the waist. A little shorter is fine.

**Step 3:** Do a small rolled hem around the edge. At the neckline, you will have to cut some small triangles out of the fabric, so that it stretches for the hem.



**Step 4:** Add hook and eye in the center front at the neckline

**Step 5:** Trim as desired!





## Trim Ideas

- Velvet trim
- ruched self fabric
- Ruched or pleated silk taffeta or silk ribbon
- Bow at the neckline. This bow I made was a simple pinked piece of silk that measured 3.5 X 3 inches, with a 7 inch tail, and a tiny portion used to wrap the center.



**Fringe** – to do this take a piece of your fabric that is a manageable length. Sew a line in the fabric where you would like the fringe to stop! Then, pick at the side for a few strands (I use a pin), and gently pull down the length of the fabric. Repeat till fringe is made. Leave about at least an inch of fabric on the other side of the fringe, so that you can sew the fringe to the underside of the pelerine. Don't worry about your fringe being all one piece. I have two pieces on my cape, and it isn't noticeable.



Enjoy! ~ Jamie (copyright2022)



D

Front  
Lip

C

1 inch

side

B

Cut strips to hem neck

front

tape  
↓ side  
↓



A

Back  
Eip

side

Little Girls  
Pelerine

3-4 T

Cut on FOLD

tape side