

Godey's 1861 Wrapper

Re-drawn and written by Jamie Quick



Details: This is a fast-working pattern that is fairly easy. The sleeves are part of the bodice, so you have a lot less finishing. Wrappers were made of wool, silk, cotton, and blended fibers. Sheers were also utilized. Some wrappers were left open with the petticoat peaking, some were closed, and some had buttonholes all the way down. I hope you will not feel limited!

Materials:

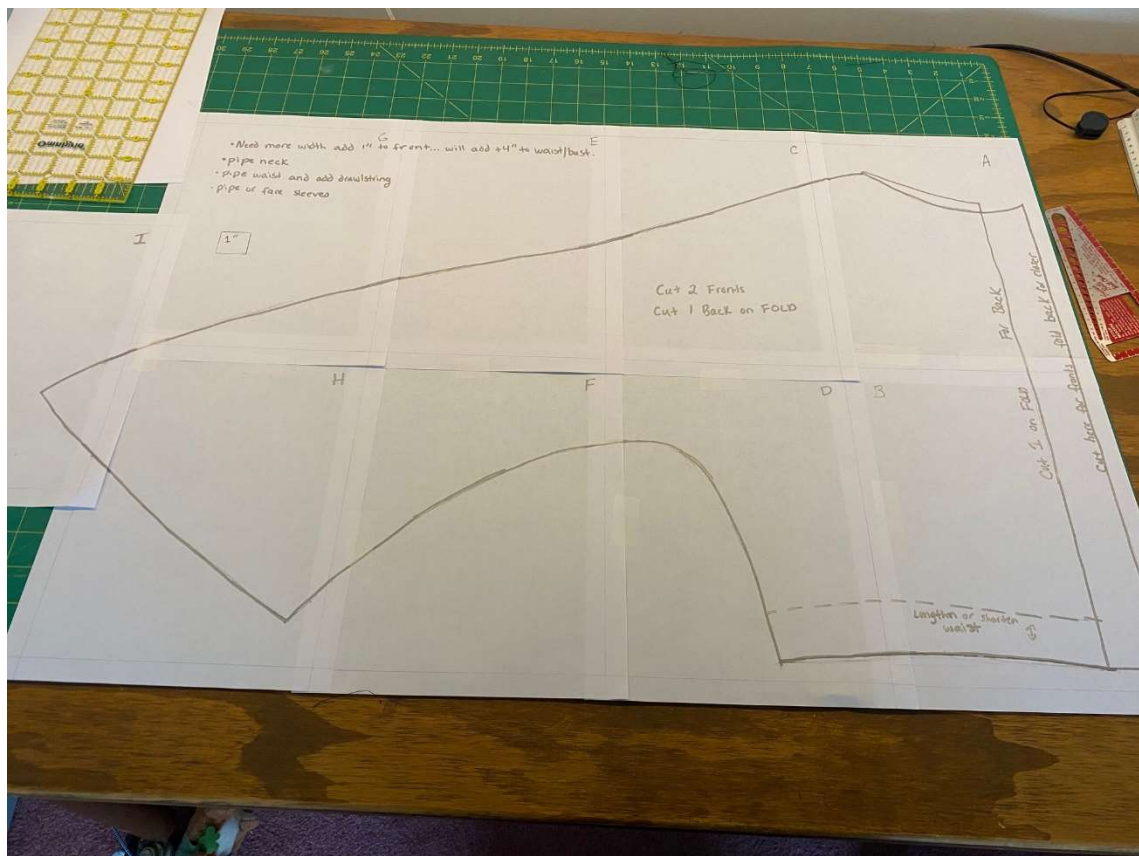
- 6 – 8 yards of 45-inch-wide fabric. It depends on your height and hoop skirt circumference.
- Buttons: Wrapper doesn't really have the tension that hook and eye requires.
- Drawl-string: You will thread this through the pipping at the waist.
- Cotton for Kick Plate/Hem Tape

Facing the sleeves: Lay the sleeve portion of pattern on the fabric, and cut out four bottoms of the sleeves. This gives extra stability and fullness to the sleeve, and gives a great finished look.



Pattern Layout: The back and fronts are almost exactly the same. You can cut the back on a fold. If your fabric isn't wide enough to cut on a fold, add a ½ inch seam allowance.

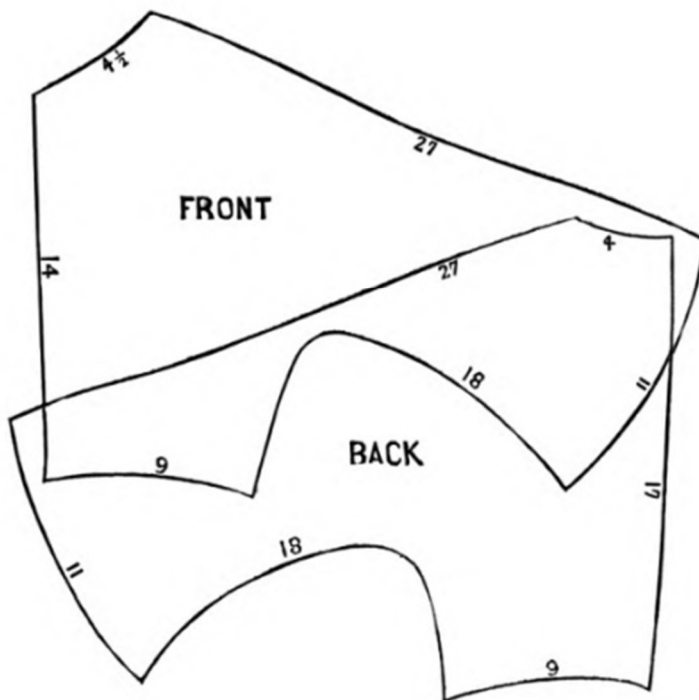
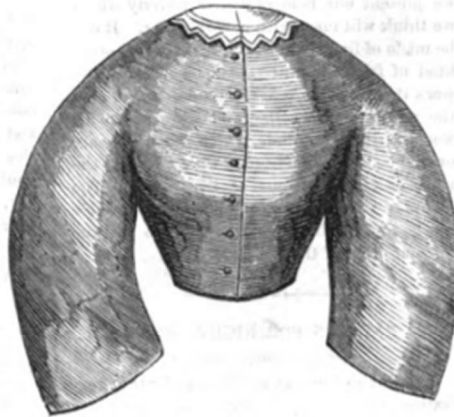
The fronts have a little extra on the front so that you can fold over the fabric for extra stability for buttonholes and finishing. The neckline is slightly different on the back vs. front too. Here is a picture of how all the pieces tape together.



Sizing/Modification: Make a mock-up, of course! That being said, my wrapper was about a 34-inch waist, and a 39-inch bust upon completion. If you add one inch before the start of the neckline, that will add 4 more inches to the entire bodice. There is extra length and lines added to shorten/length the waist.

PATTERN FOR A LADY'S WRAPPER.

This wrapper pattern possesses peculiar advantages in its simplicity and adaptation to any figure—the back and front being exactly alike, and the only alteration necessary being in the size of the neck. It can be made of any material, perfectly plain, or very richly trimmed. It does not require the aid of the dressmaker, as any lady can make and trim a dress for herself. Cashmere trimmed with velvet, lawn with ruffles, or white material with flouncing, look equally well. Plain chintz, with puffs of the same. The connecting seam is on the shoulder. The waist should have a string run in the hem to make it fit smoothly.

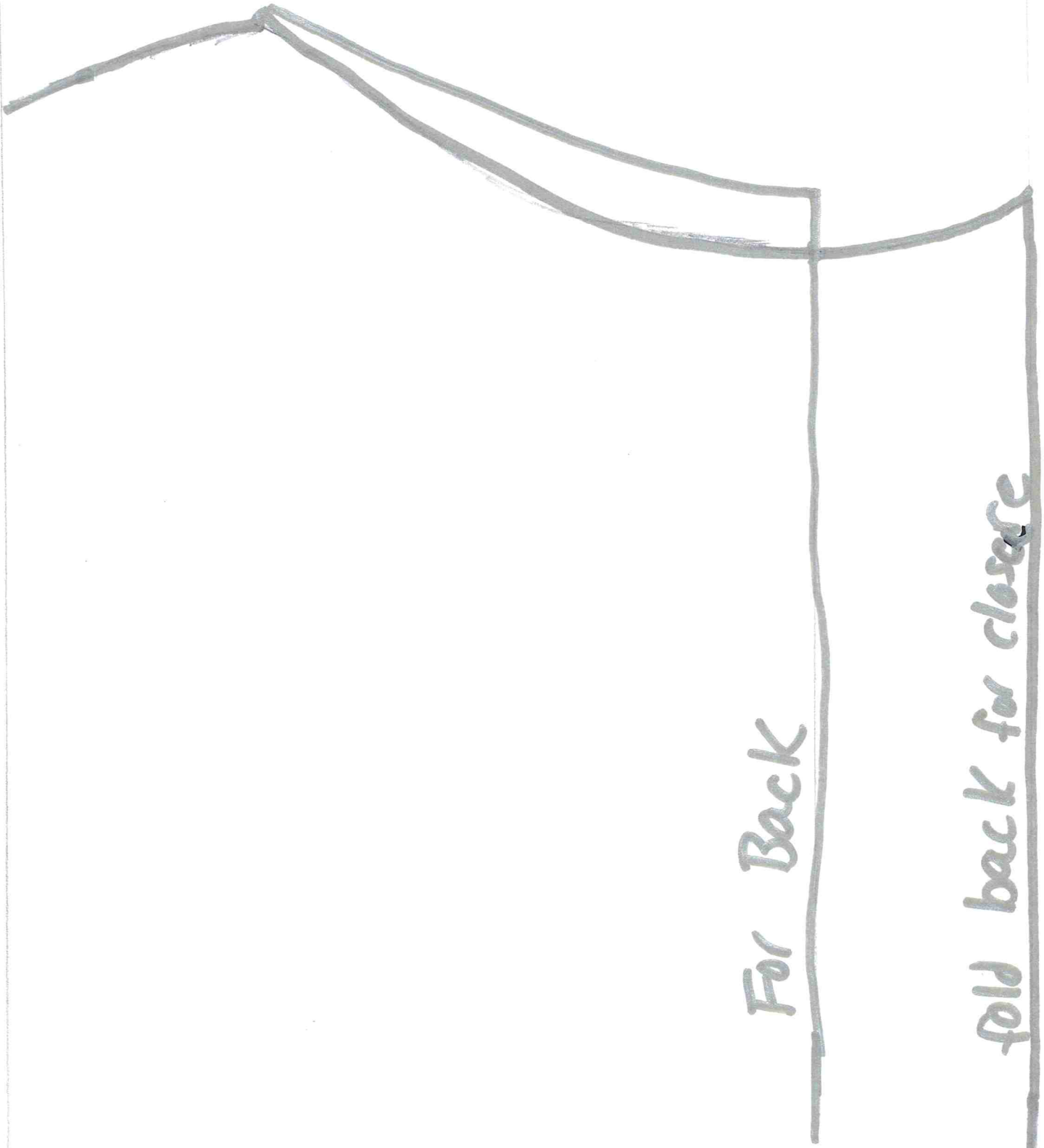




Happy Sewing ~ Jamie

copyright@2023 – My pattern is not to be sold/republished without my permission, items made by my patterns are your property... you can absolutely make this wrapper and sell it! The original pattern is public domain.

A



For Back

fold back for closure

B

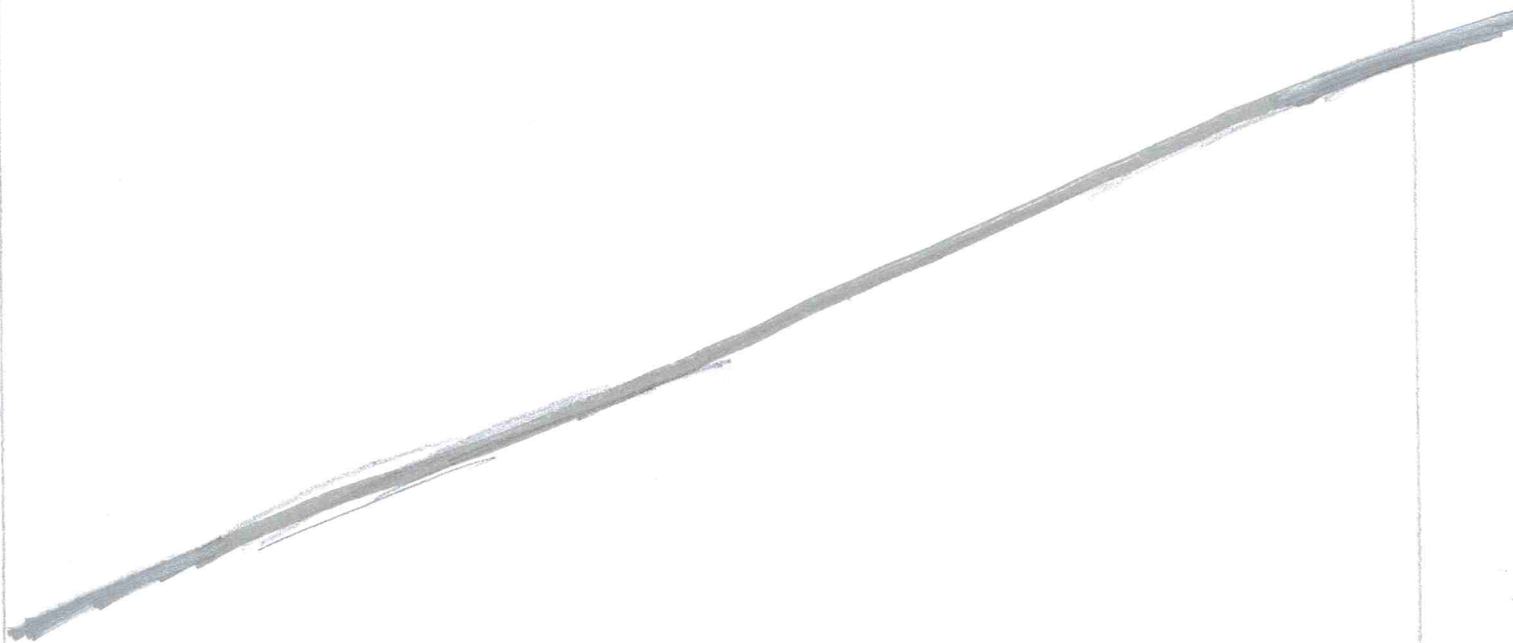
Cut 1 on Fold

Cut here for fronts

Lengthen or shorten
waist

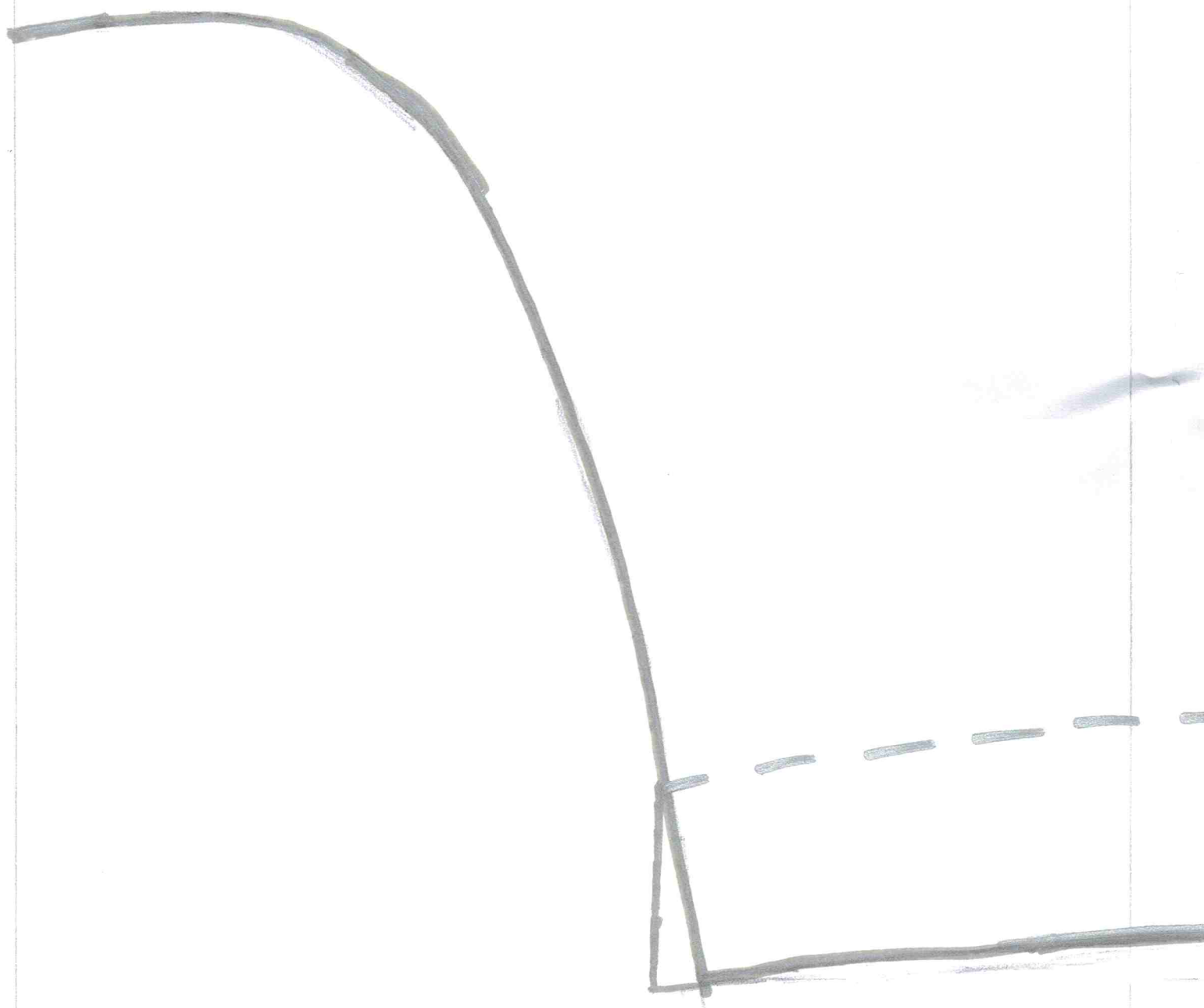


C

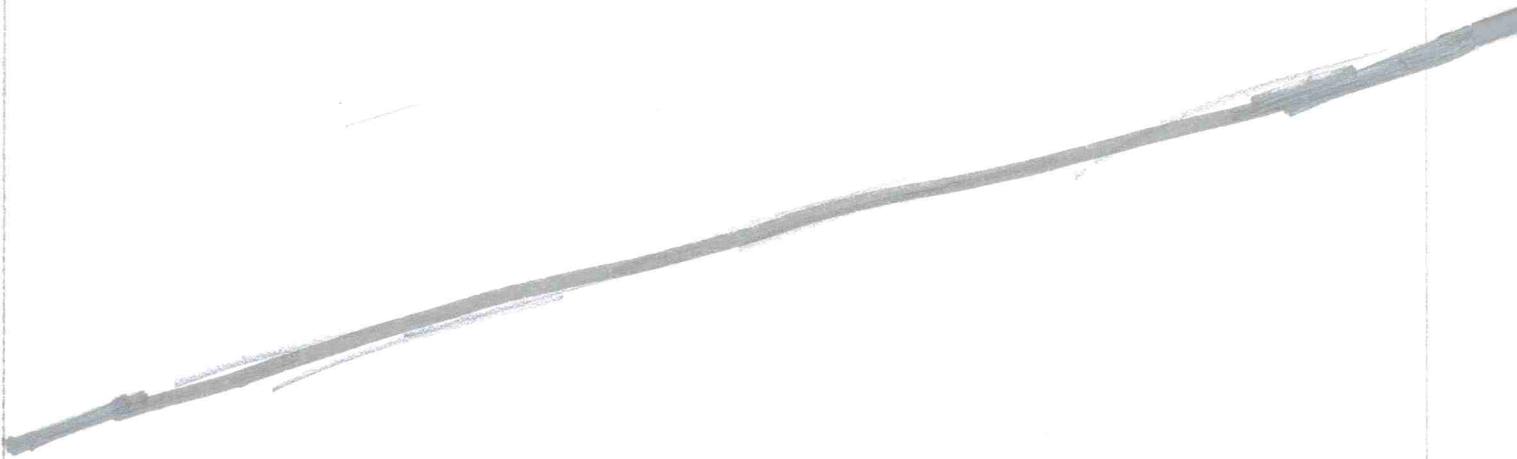


Cut 2 Fronts
Cut 1 Back on FOLD

D



it... will add +4" to waist/bust. ^E



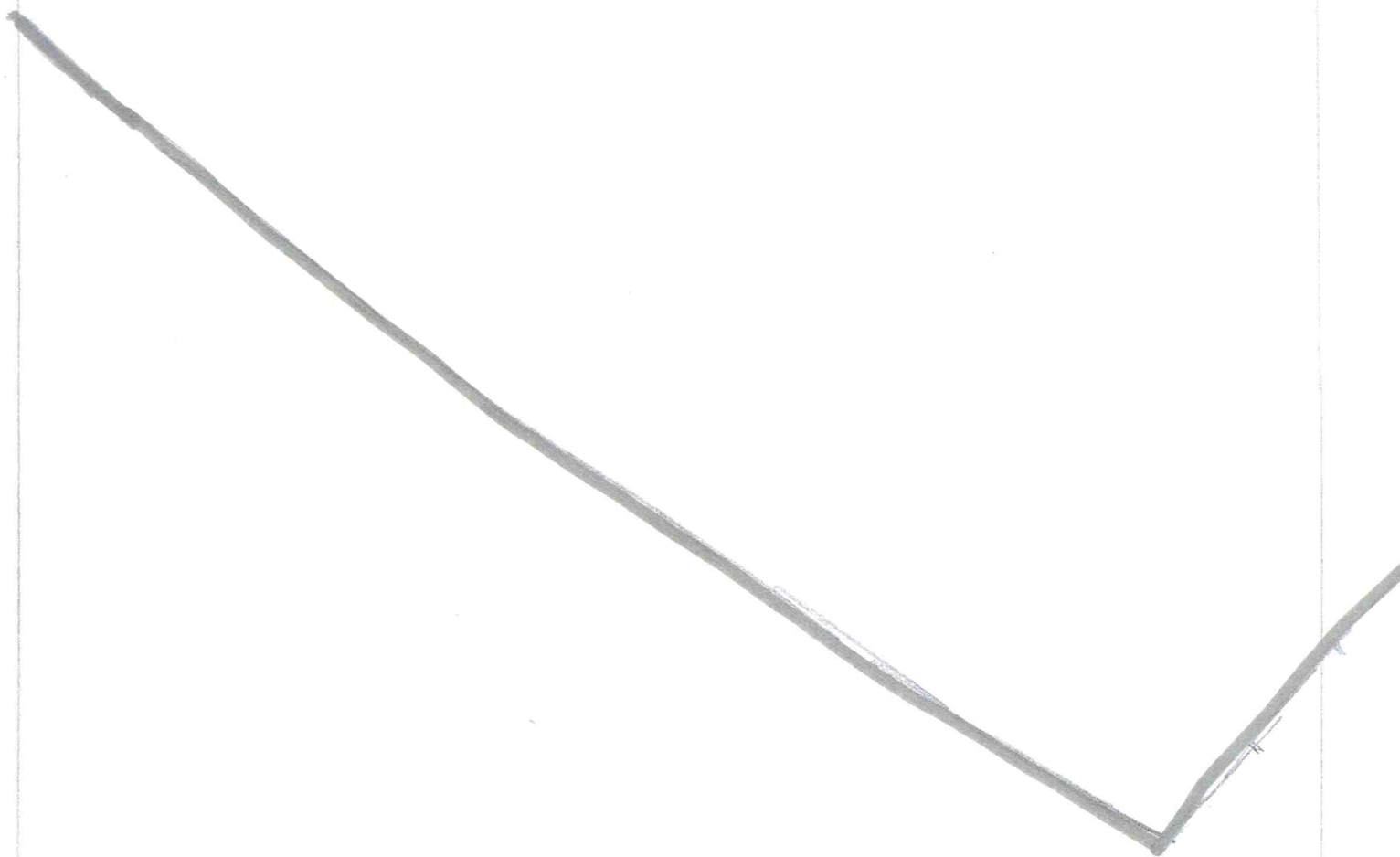
F



- G
- Need more width add 1" to front
 - pipe neck
 - pipe waist and add drawstring
 - pipe or face sleeves



H



I

