



PORSELANO
NOT JUST TILES, LIFESTYLES
by
JOHNSON®



Royal & Elite Plus Catalogue

80x160 cm, 60x120 cm,
60x60cm

There's an ocean of sameness out there. Every place, room-by-room is a copy of a copy. And in a world of such me-too's, comes Porselano. Standing out proudly, as India's only truly premium Glazed Vitrified Tiles. The weight of the word premium can be felt once you touch just one of these tiles. Or you can see it in the most simplest of its designs. The designs of Porselano are based on a simple principle - to take the grandeur of life-spaces to overwhelming levels in the most understated ways. One that doesn't shout for attention. Quite like the kind of success that seems nothing but well-earned.

To satiate the virtue of choice, Porselano offers 3 sizes and 7 distinctive finishes.

The range exhibits unlimited design options spread over different themes - marble; stone, wood and more. All of which help you express your discerning taste in as many different ways.

It's luxury like you've never seen before; partly because it's luxury in its truest form.



HYGIENE & CLEANLINESS

- Easy to clean and maintain
- Stain & Scratch resistant options
- Resistance to household chemicals



STRONG & DURABLE

- Resistant to deformation
- High breaking strength & MOR
- Authentic porcelain, negligible water absorption



AESTHETICS & STYLE

- Options to suit all interior styles
- Carefully chosen shades and themes
- Multiple surface textures



THEMES

- Unique selection of marbles
- Warmth of chosen wood compositions
- Natural stone and concrete
- Metal sheet and decoration



SAFE - SURFACES

- Non-toxic
- Frost & Fire resistant
- No decolouring

HIGH GLOSSY

ROCKER

POLISHED

RUSTIC

MATT

SATIN

WOOD MATT

7 Surface finish options in Porselano

Surface finishes play an important role in creating an ambience to the space being designed through its touch and feel as well as the level of reflection from the tiled walls & floors.

SIZES

80x160 CM

60x120 CM

60x60 CM

Technical Details

PAGE

08

36

130

174

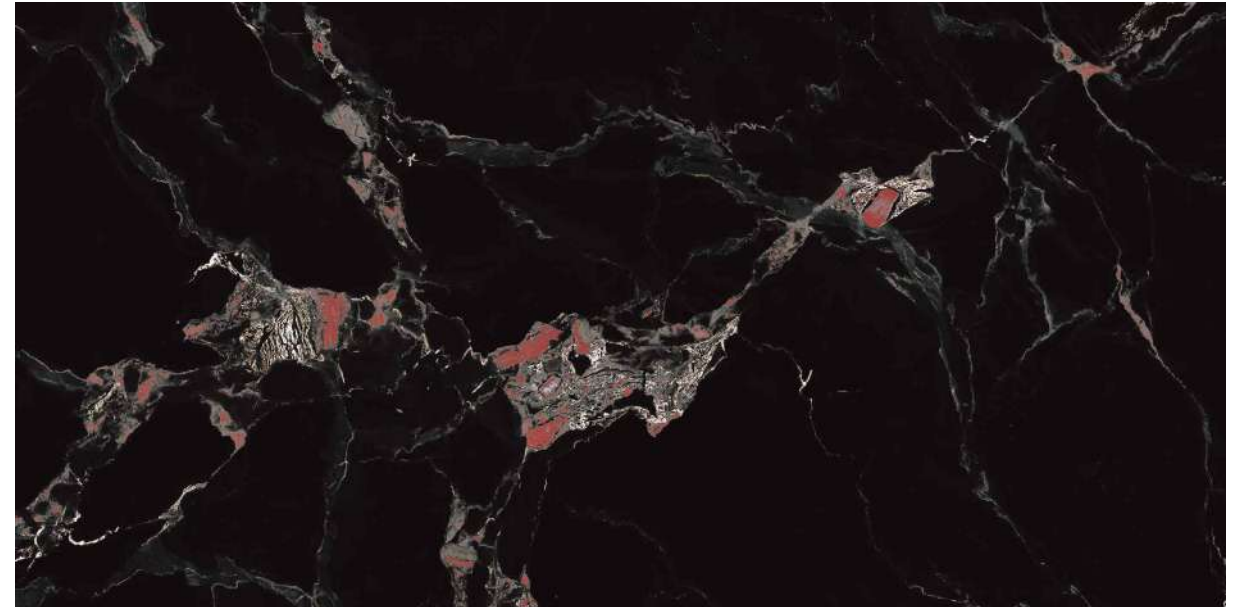


Royale
COLLECTION
80x160 CM

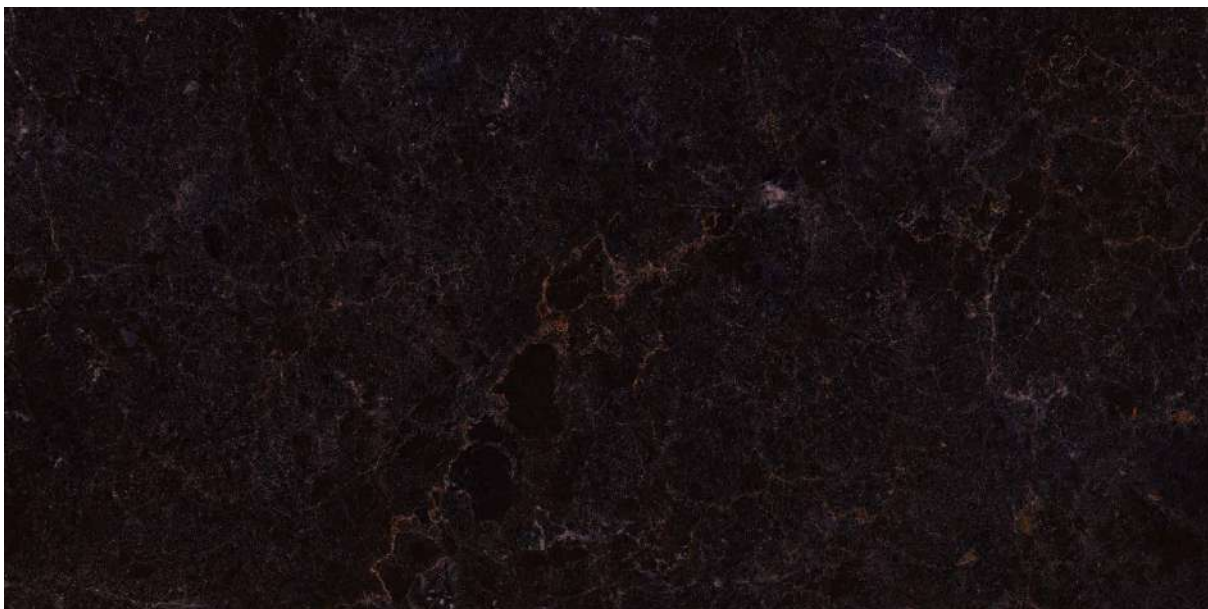
At Johnson, we believe luxury is not just what appears to the naked eye. Along with being grand in size that justifies the true potential of design. Making them stand strong as a paragon of unbridled opulence and care. While you may want to call it a surface we call it a wonder in its own right. It is a surface that offers limitless possibilities. The breakthrough technology enables to recreate exotic marbles, stones, woods and even concrete textures in sizes never imagined before. Bestowed with path breaking technical characteristics, it surpasses its natural counterpart in many ways. As all the inherent flaws in natural marble are fully addressed.



Anant Oynx



Black Label



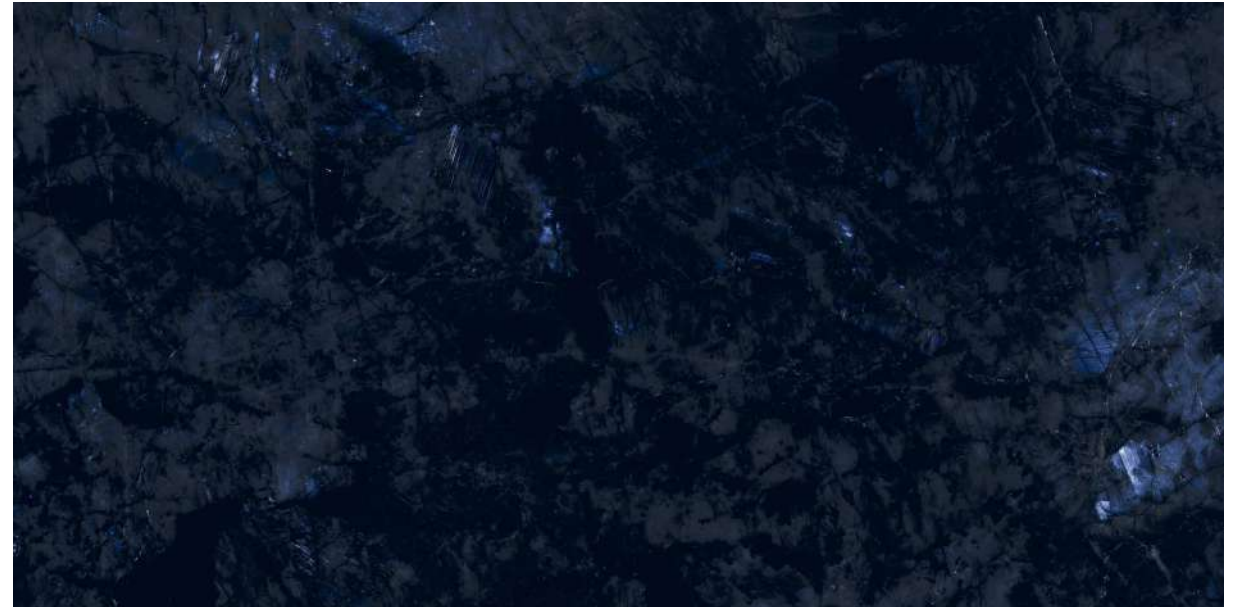
Antique Black



Breccia Gold



Cloud Oynx Décor



Black Label



Inferno Lava



Albastrino White



Aspen Gris



Antila Grey



Aspen Natura



Astro Crema



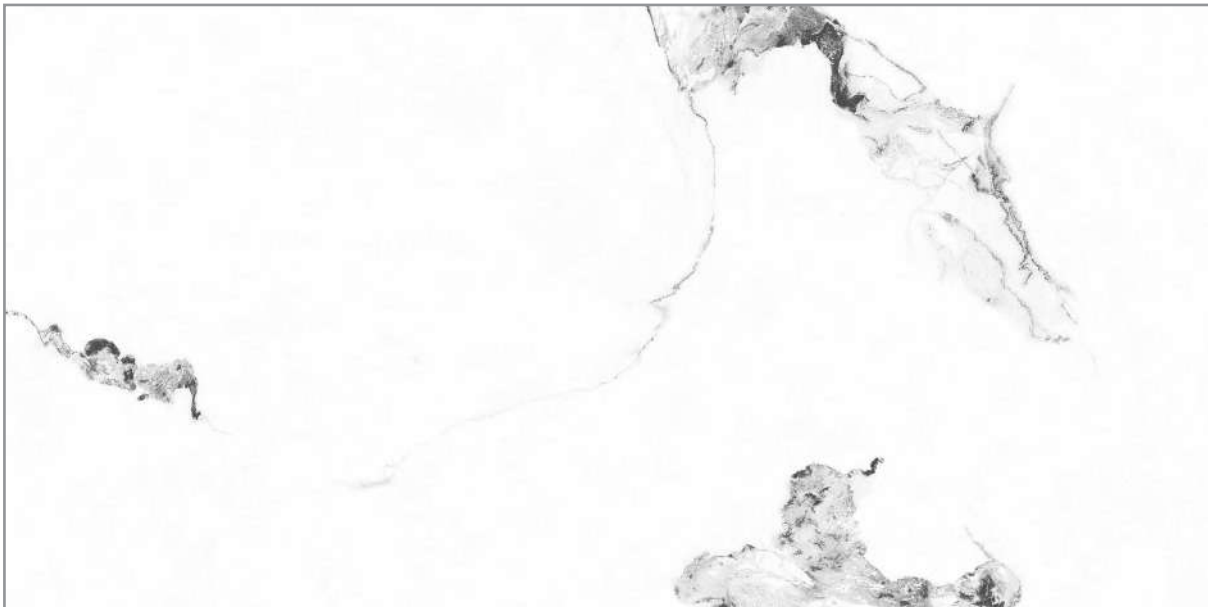
Chill Blush



Boutique White



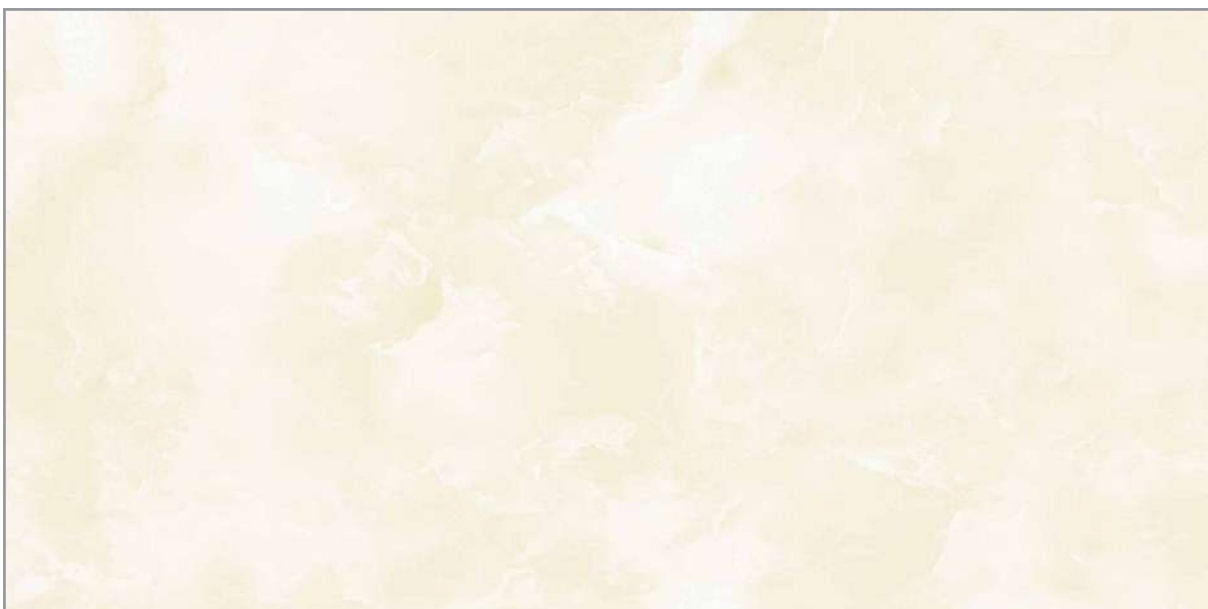
Chill Green



Calacatta Vagli White



Cristiano Bianco



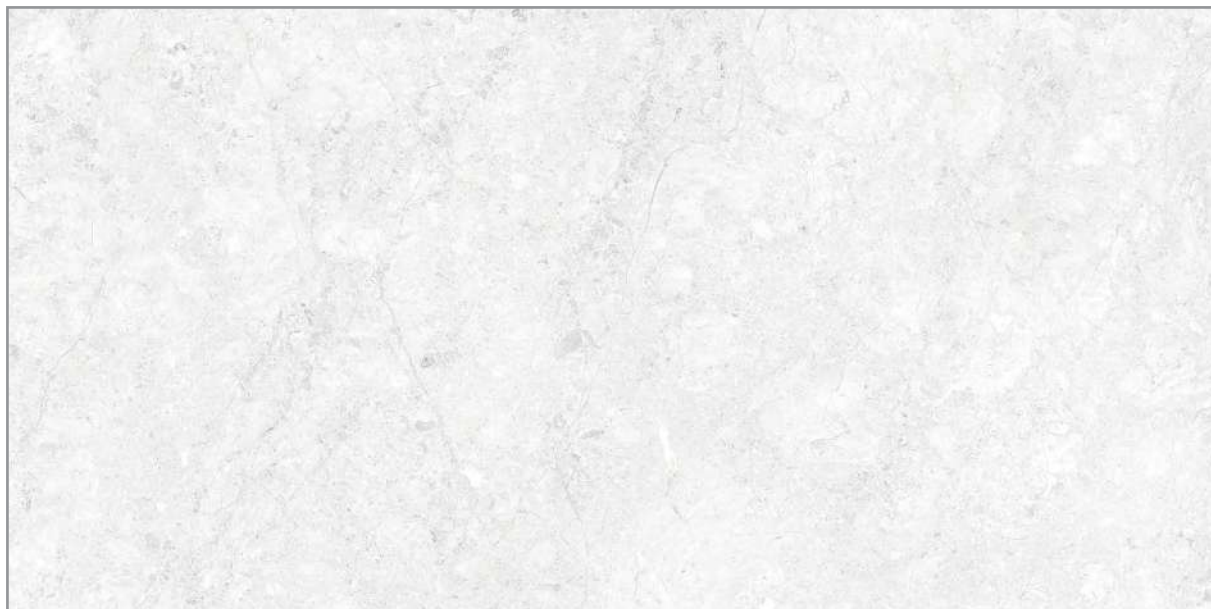
Cloud Oynx



Cristiano Grey



Dinoba Olive



Dinoba Smoke



Greek Beige



Greek Gris



Hazel Statuario



Lolo Rosso



Indus Grey



Makrana Steel



Octiva Pearl



Olga Statuario



Rio Onex Lime



Rio Onyx Aqua



Rio Onyx Grey



Serenis Onyx



Sancho Pearl



Sofina Buff



Swiss Statuario



Tropic Salt



Sydney Bianco



Vibrant Natura



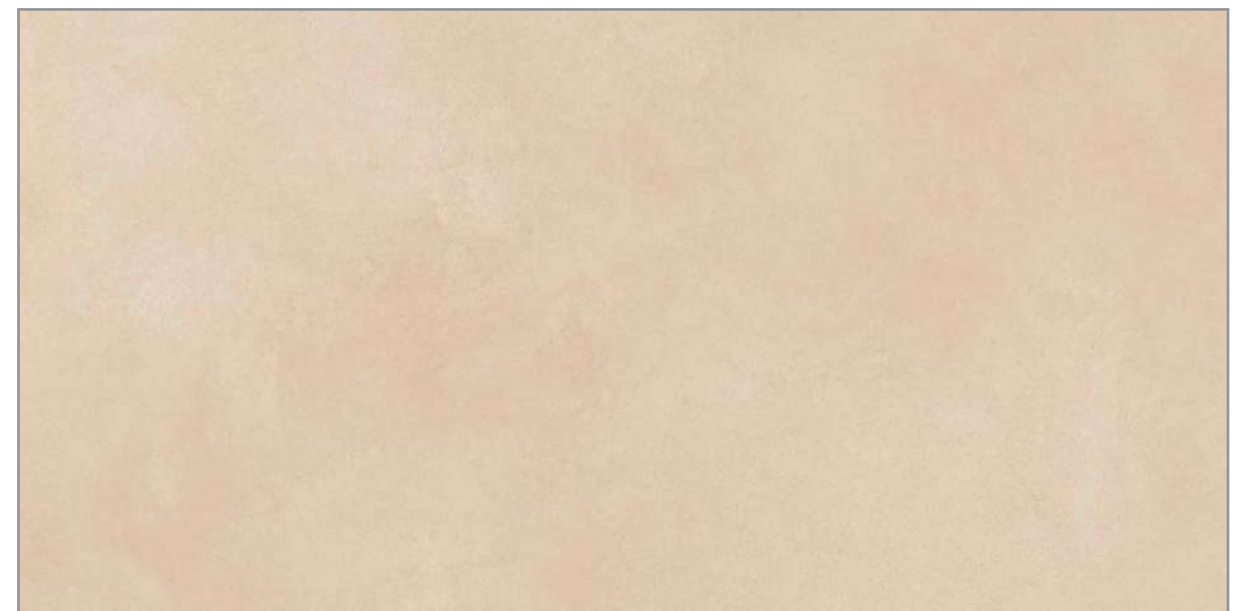
Cemento Grey



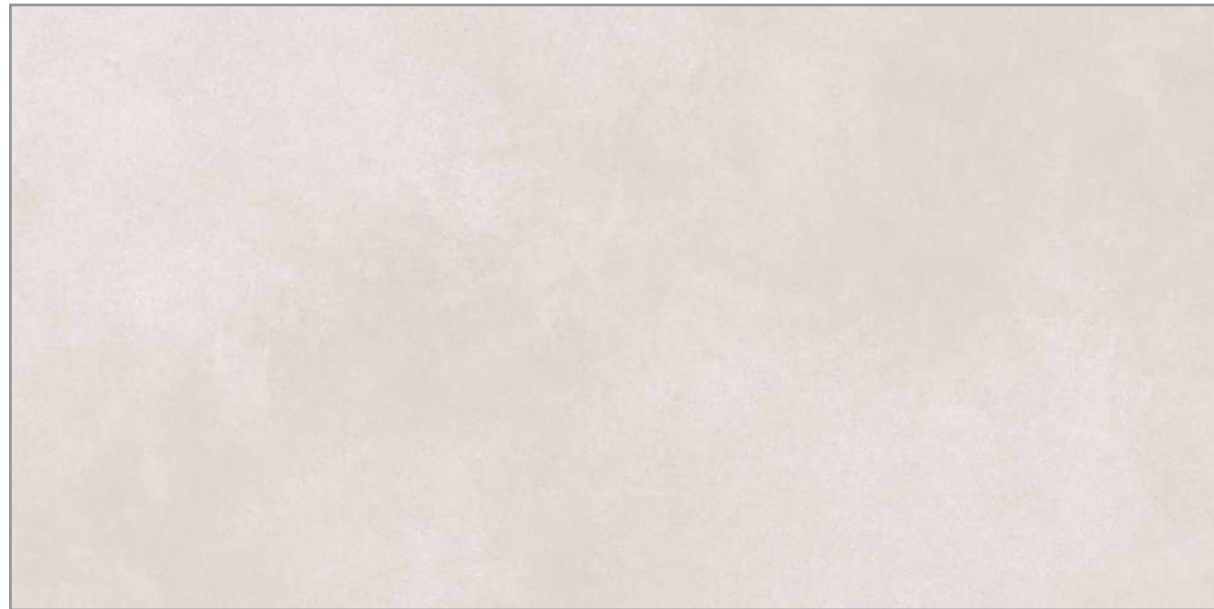
Cemento Gris



Cemento White



Tenacity Beige



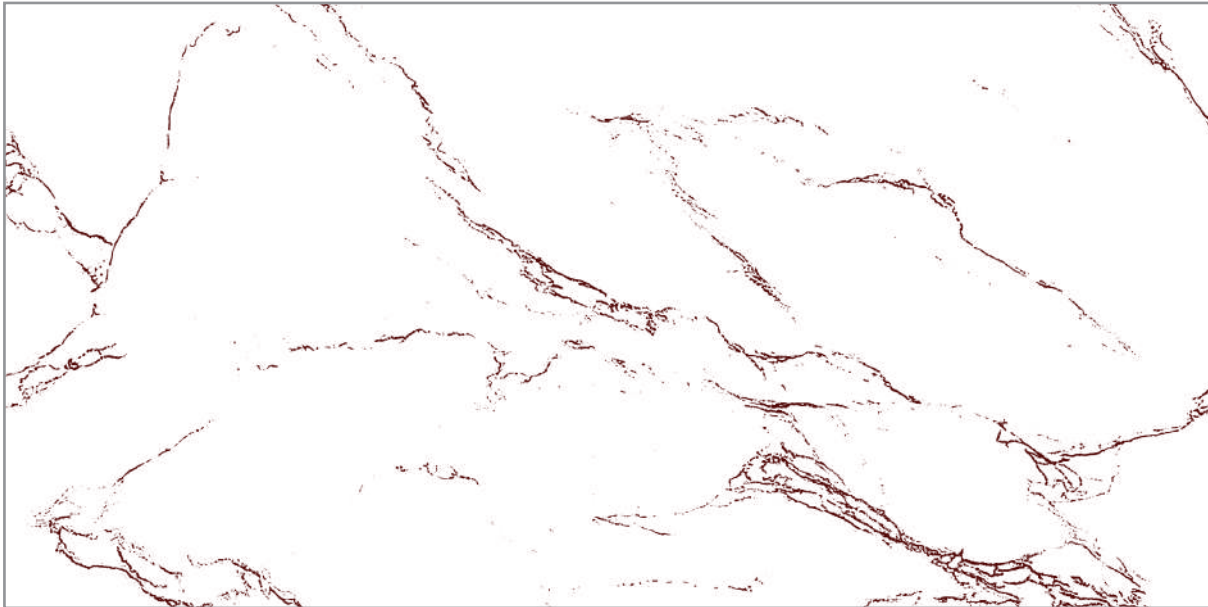
Tenacity Bianco



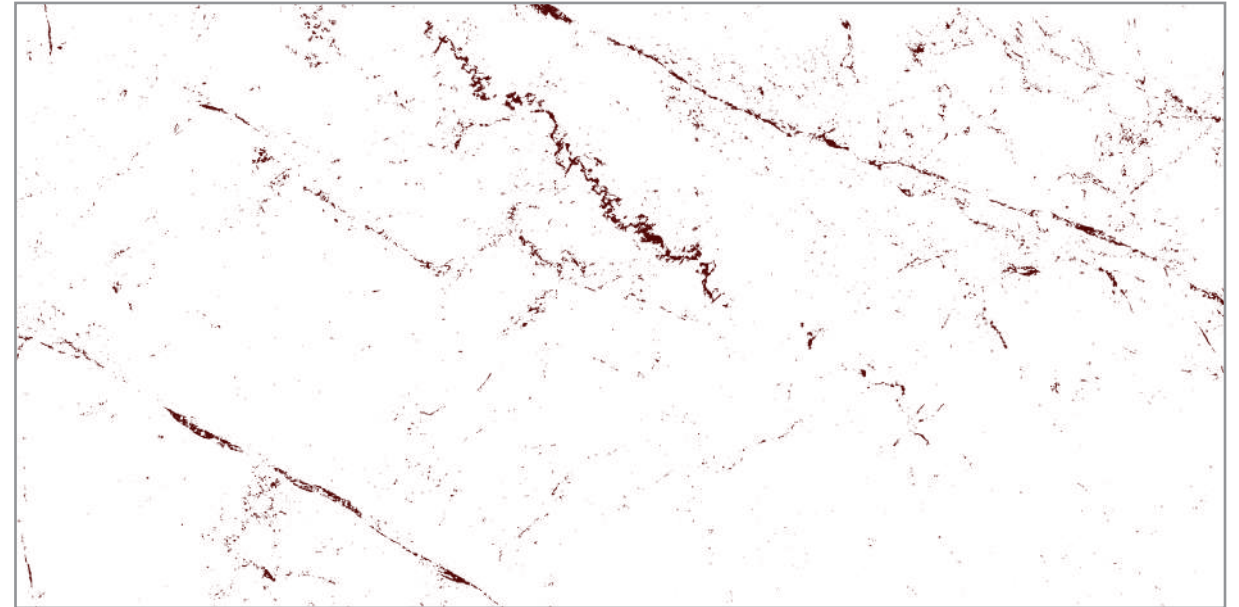
Tenacity Brown



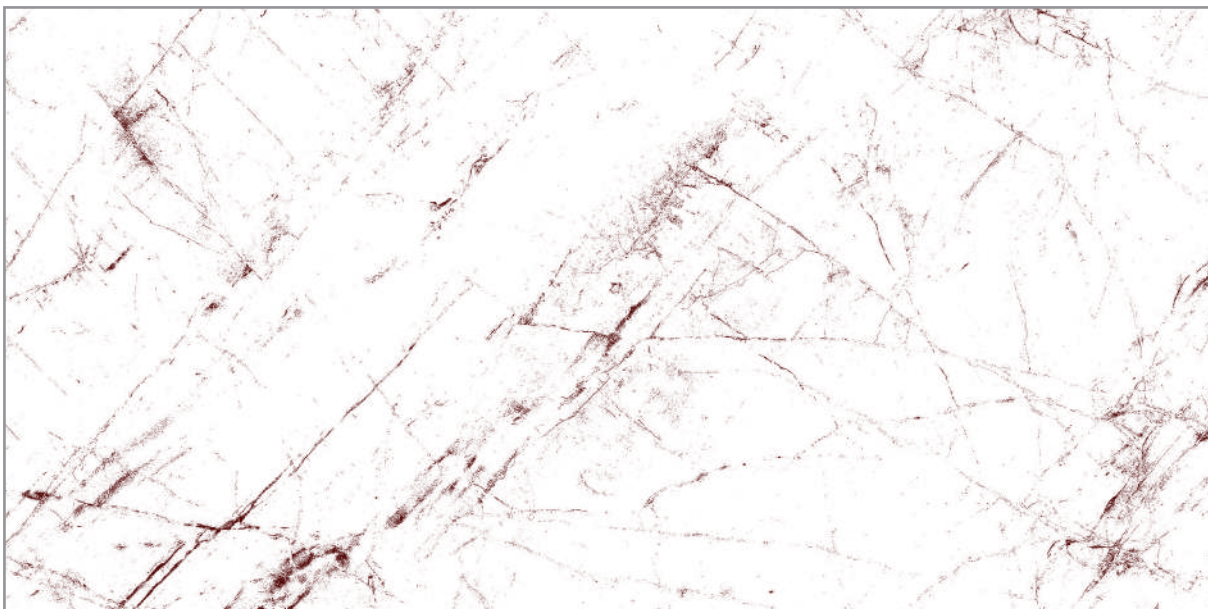
Tenacity Grey



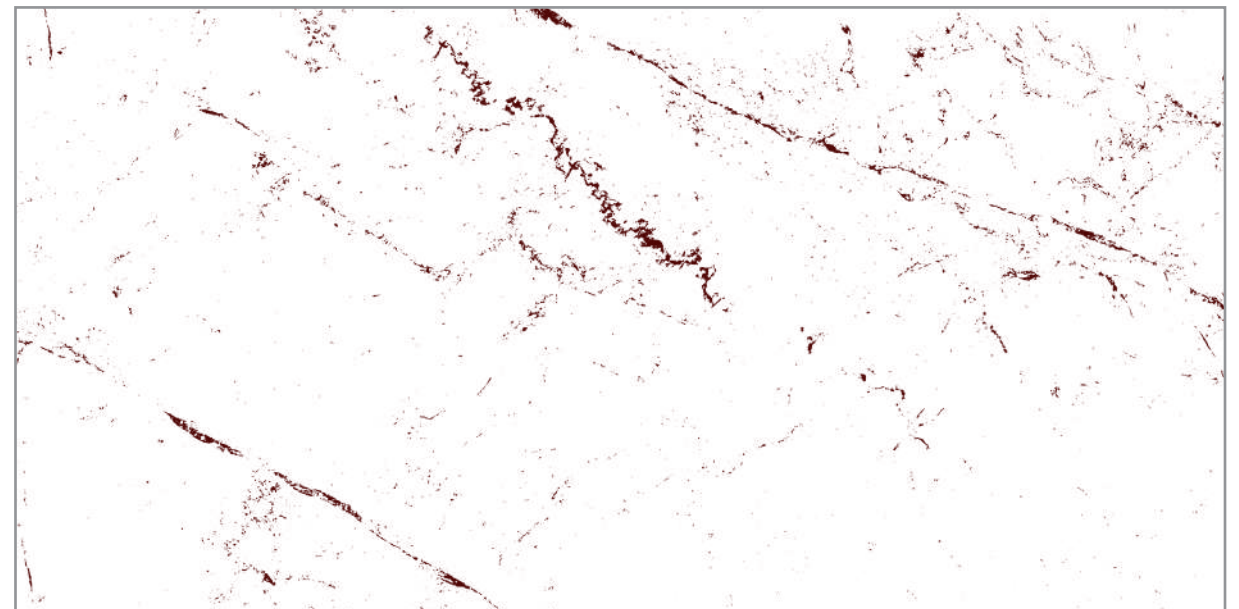
Adrina Statuario



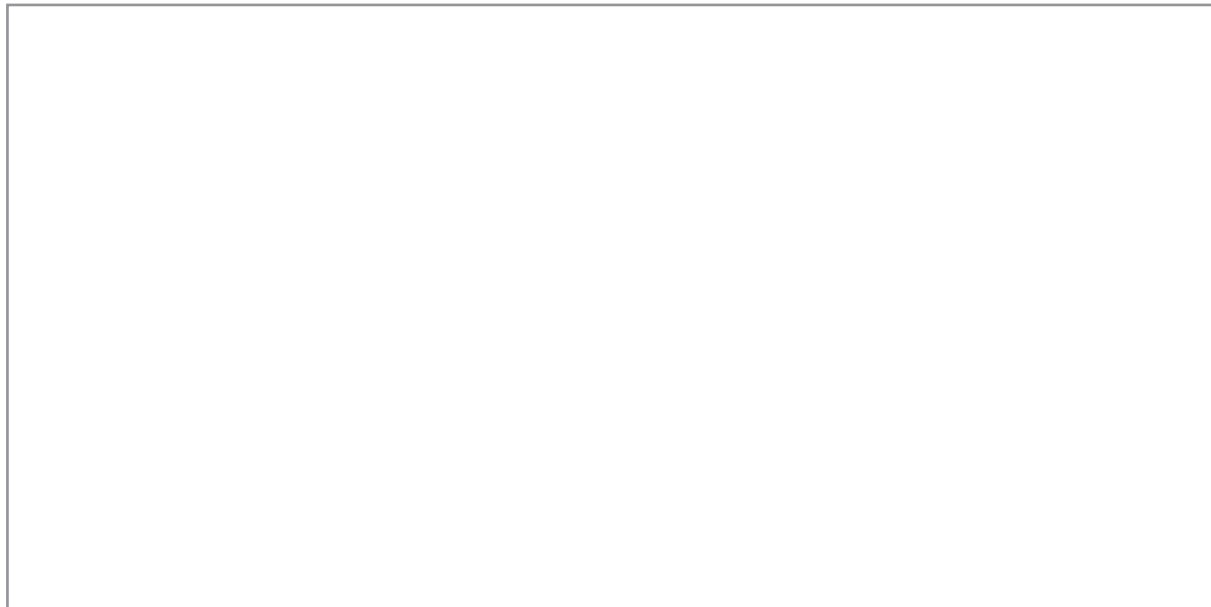
Caspian Crema



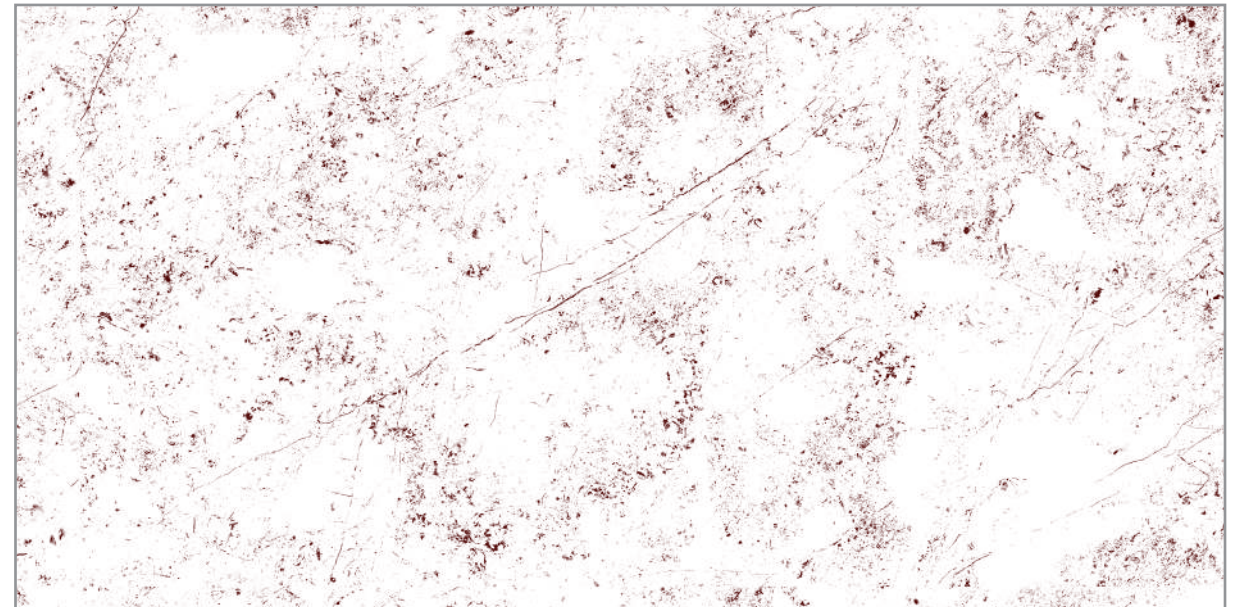
Appealing Grey



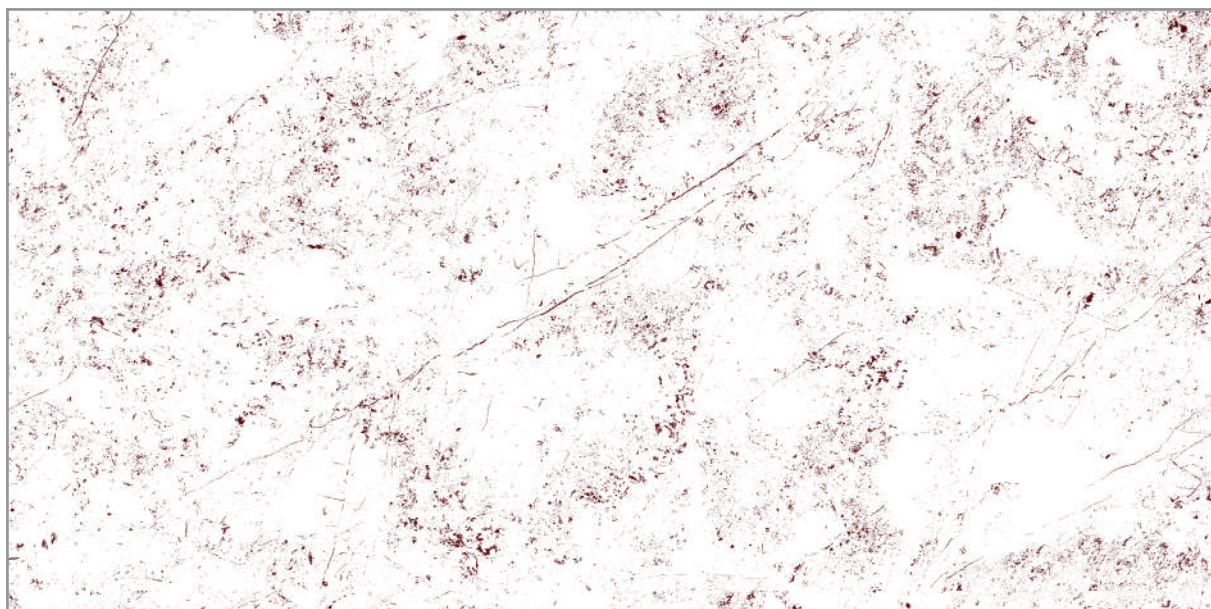
Caspian Grey



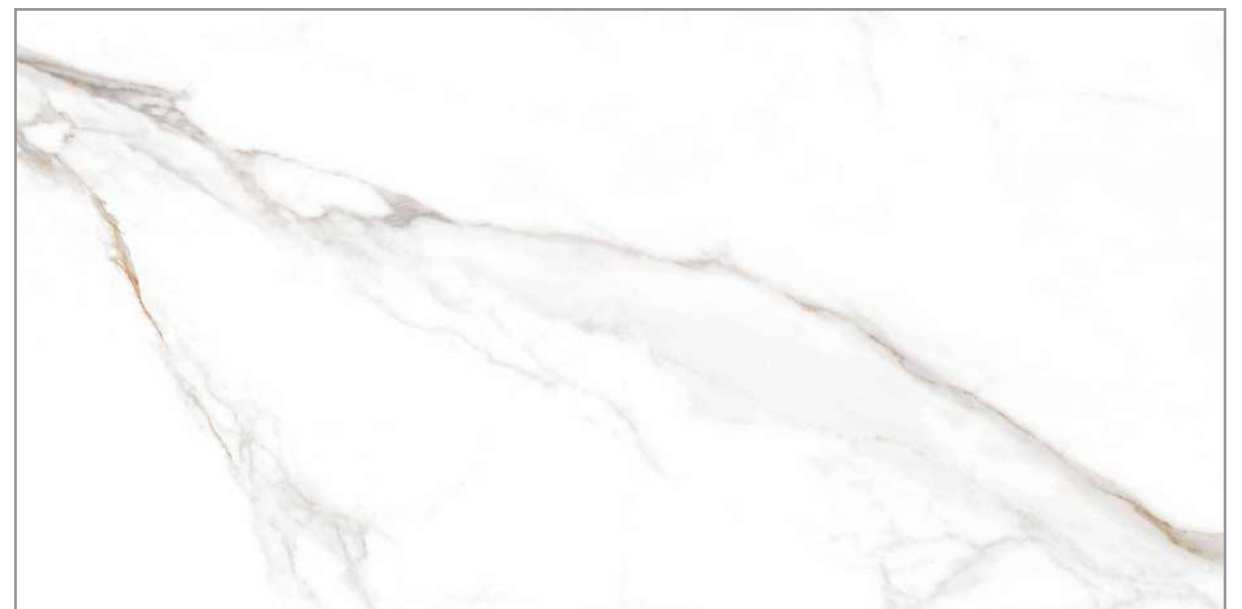
Distinct Pearl



Fiama Grey



Fiama Crema



Spring Staturio



60x120 cm

ELITE PLUS

Porselano's Elite Plus & Elite collection of porcelain tiles takes the concept of Luxe Living several notches higher. This exquisite collection has been inspired by nature



Floor: Brazos Gold



Floor & Wall: Titan Black



Floor & Wall: Brazos Gold

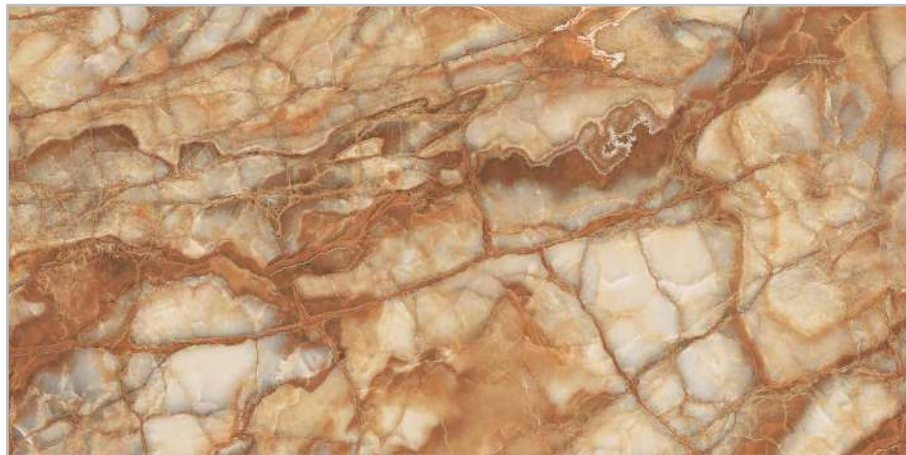


Floor: Merrick Silver

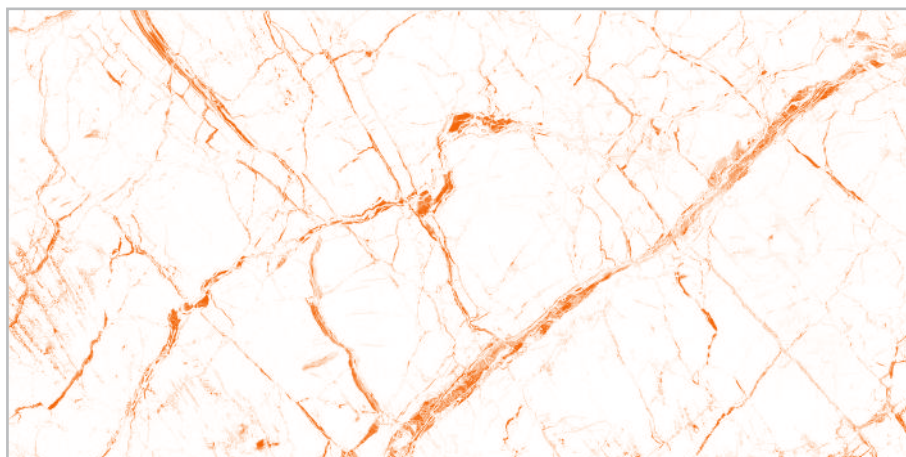
ELITE PLUS

60 X 120 cm

High Gloss | Rectified | Smooth



Agata Rosso



Blue Lagoon



Brazos Gold



Breccia Aqua



Breccia Blue



Breccia Gold

ELITE PLUS

60 X 120 cm

High Gloss | Rectified | Smooth



Carlos Coffee



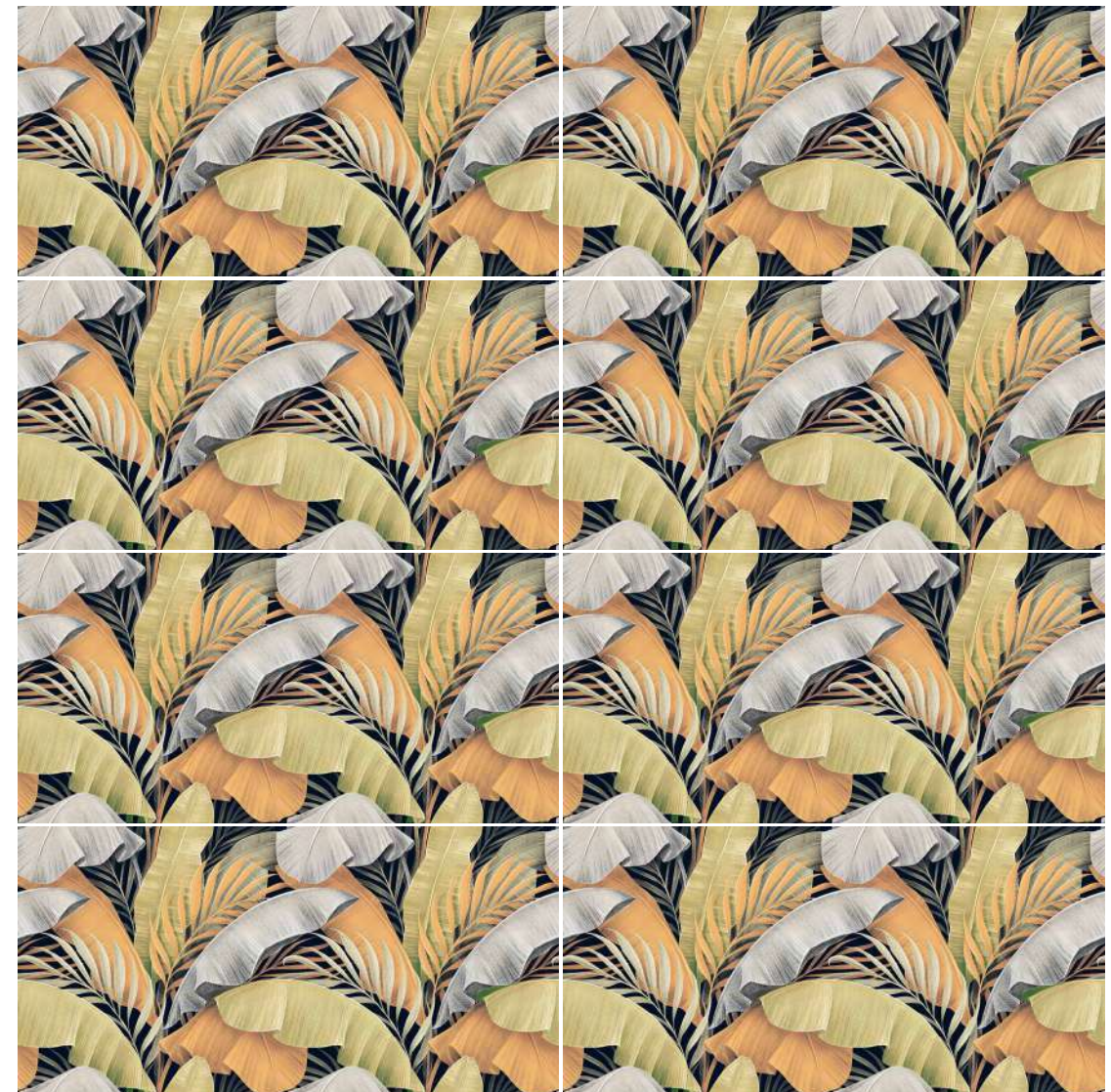
Cavier Azul



Compose White



Copper Leaf



ELITE PLUS

60 X 120 cm

High Gloss | Rectified | Smooth



Costa Rica Azul



Emerald Gold



ELITE PLUS

60 X 120 cm

High Gloss | Rectified | Smooth



Europa Royal Blue



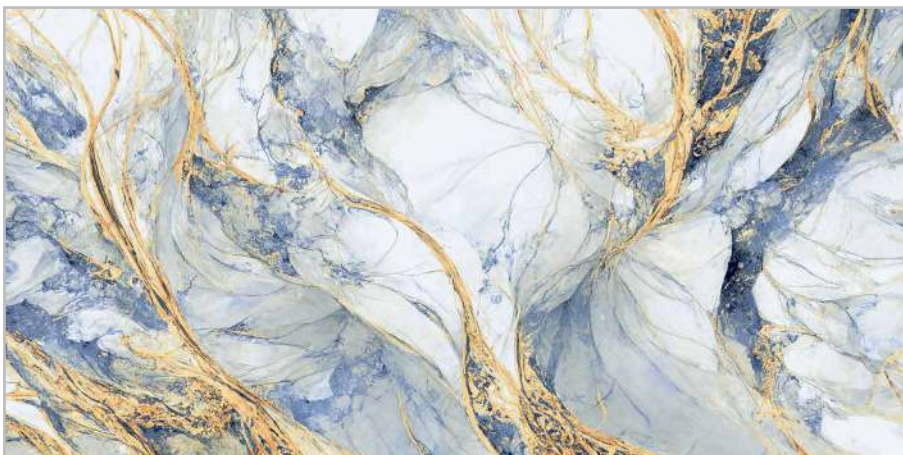
Henz Charcoal



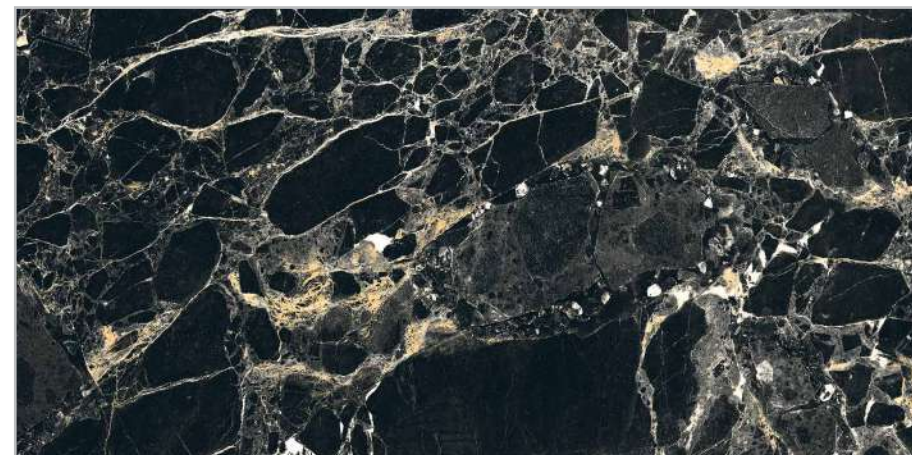
Gaurgunta Black



Hilton Bianco



Heavenly White



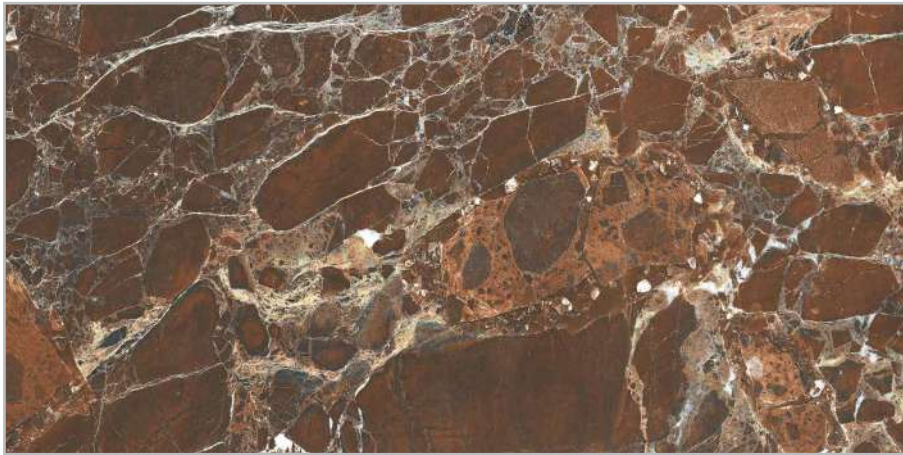
Inferno Black

ELITE PLUS

60 X 120 cm

High Gloss | Rectified | Smooth

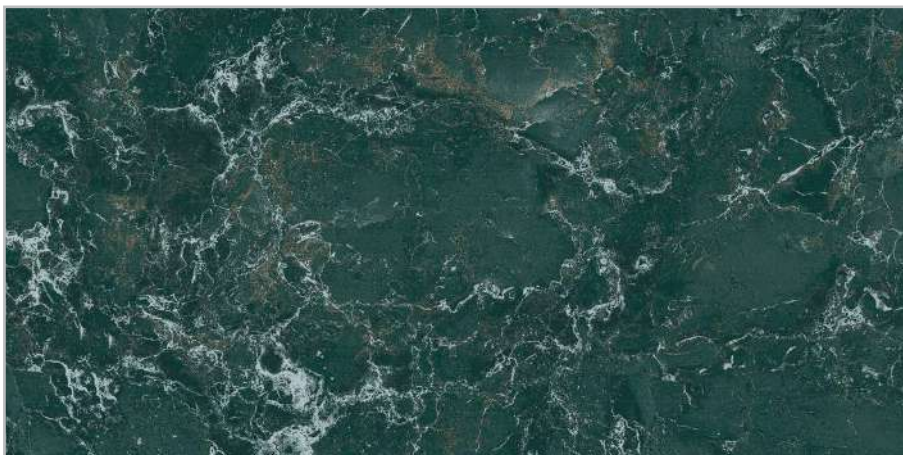
PORSELANO
NOT JUST TILES, LIFESTYLES
by
JOHNSON



Inferno Brown



Marvel Azulo



Lapis Green



Marvel Dk Choco



Madrid Lava

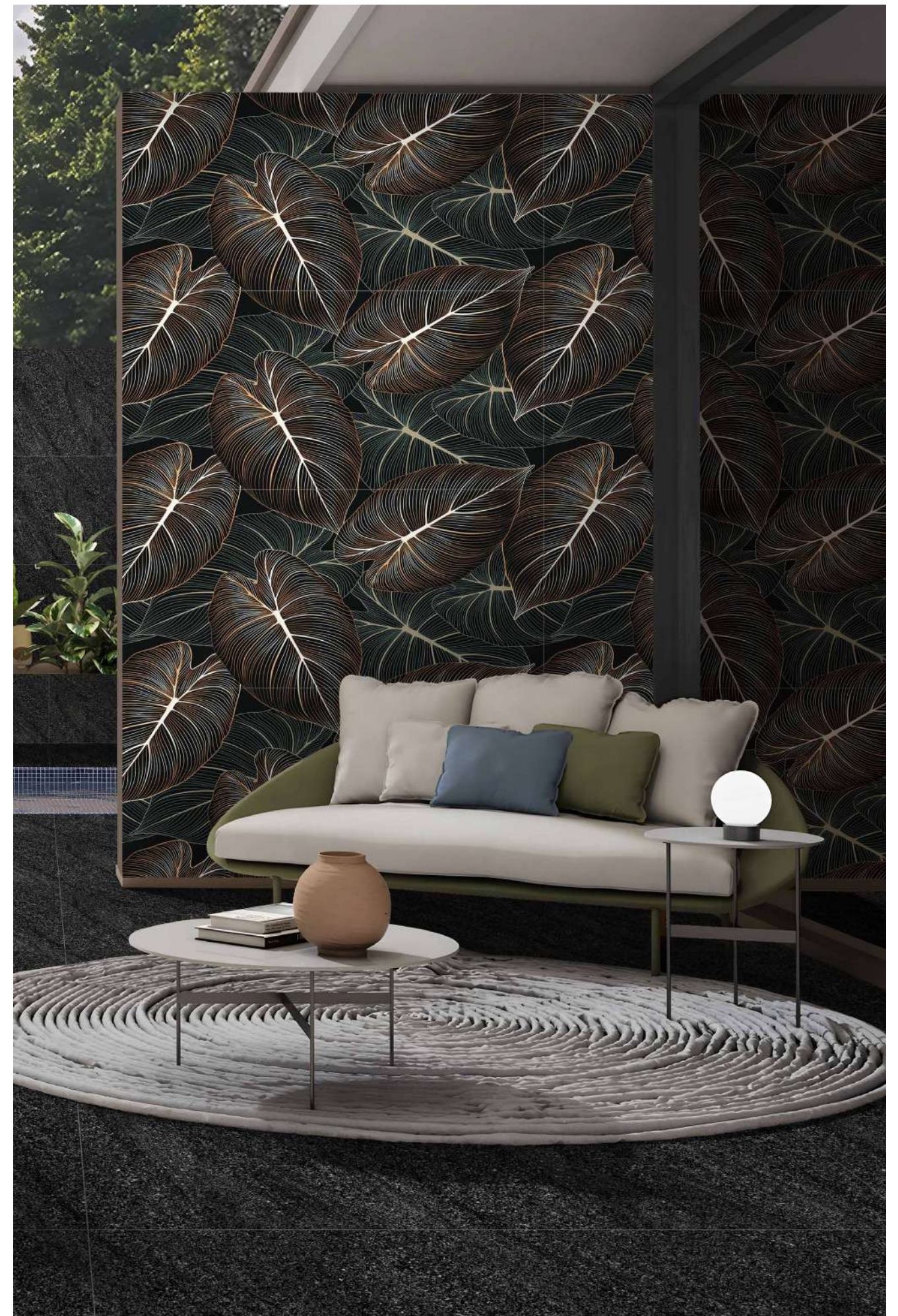
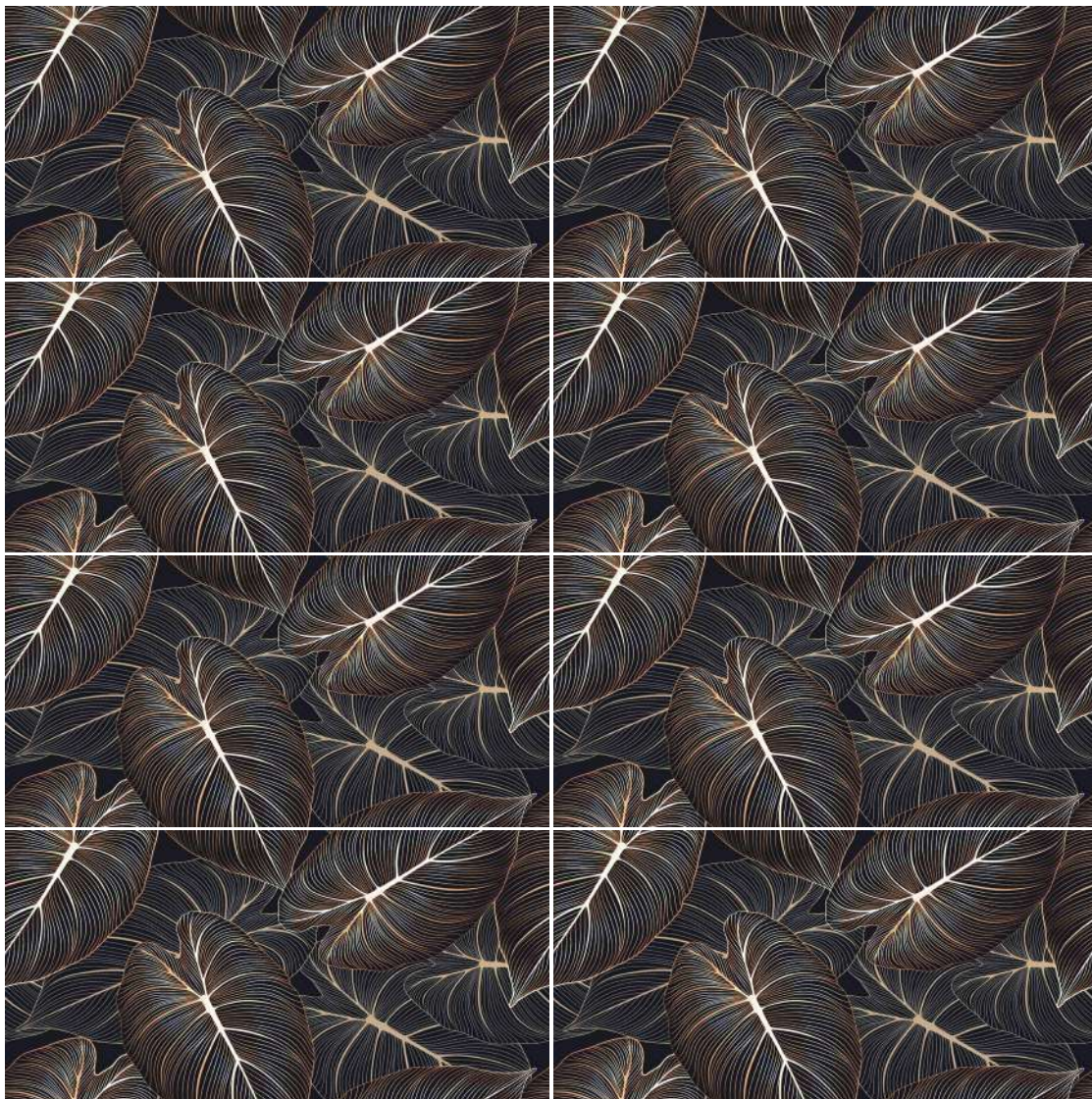
ELITE PLUS

60 X 120 cm

High Gloss | Rectified | Smooth



Magic Floral



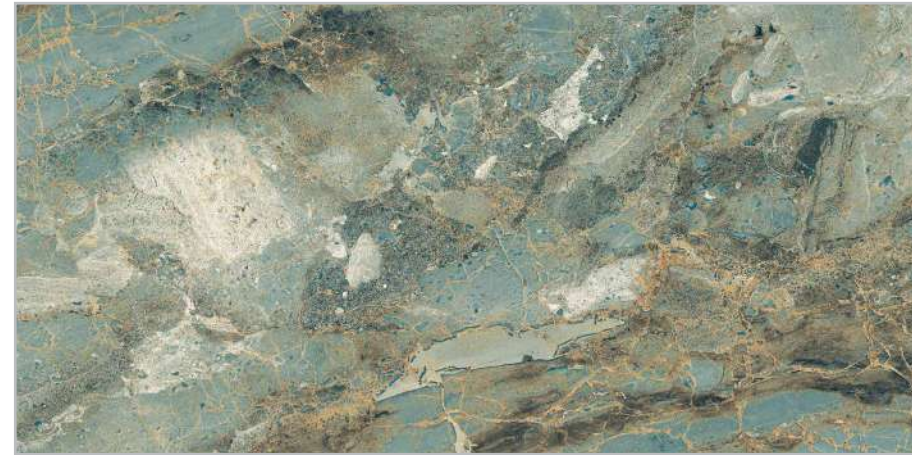
ELITE PLUS

60 X 120 cm

High Gloss | Rectified | Smooth



Merrick French



Opulant Aqua



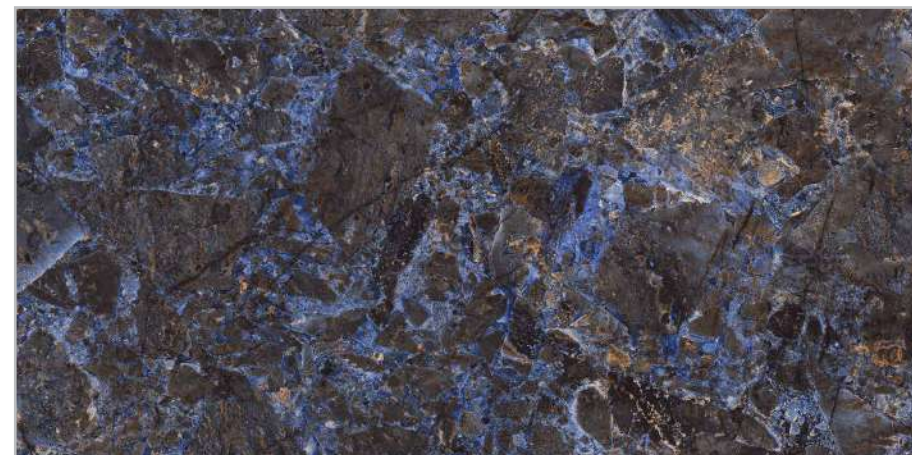
Ocean Grey



Quinto Grey



Ocean Latte



Revlon Azure

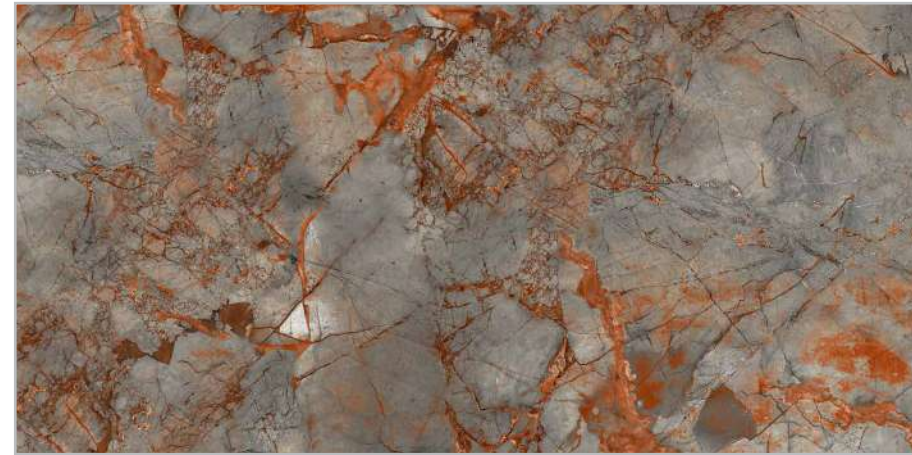
ELITE PLUS

60 X 120 cm

High Gloss | Rectified | Smooth



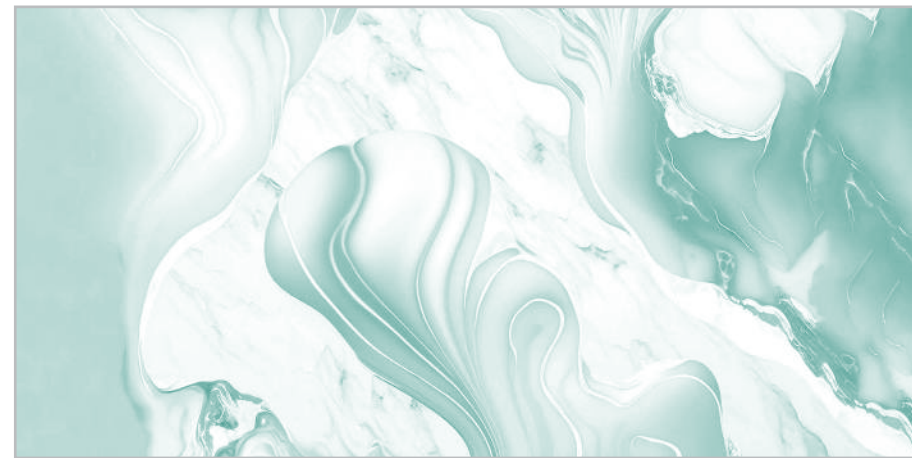
Romania Black



Simon Scarlet



Ryan Beige



Sudan Olive



Silence Slate Green



Titan Black

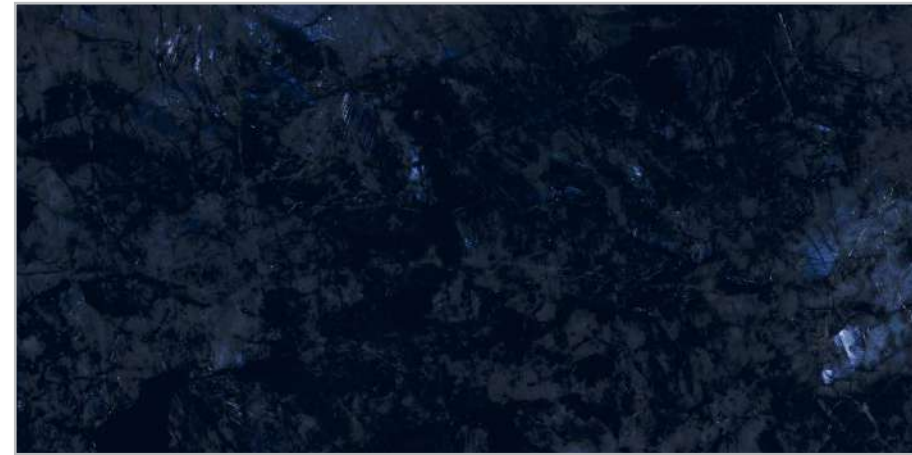
ELITE PLUS

60 X 120 cm

High Gloss | Rectified | Smooth



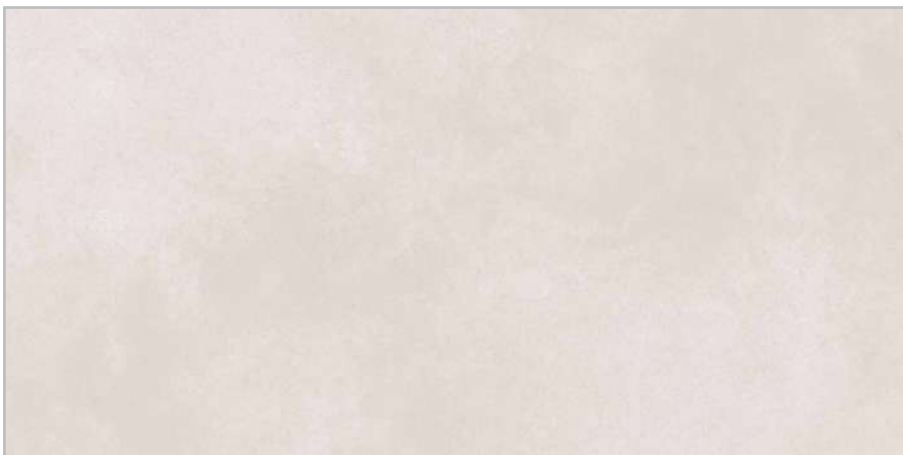
Tornado Mocha



Vento Blue



Toronto Marble



Tunisha Grey



Wall: Ankara Bianco



Wall & Floor: Camin Bianco



Floor: Heritage Crema

ELITE PLUS
60 X 120 cm

Polished | Rectified | Smooth



Agata Crema



Ankara Bianco



Alepro White



Aurum Bronze



Algeria Beige



Blend Grey

ELITE PLUS
60 X 120 cm

Polished | Rectified | Smooth



Camin Bianco



Chrysler Cloudy



Carina Binaco



Comfy Grey



Carlos Crema



Cristiano Bianco

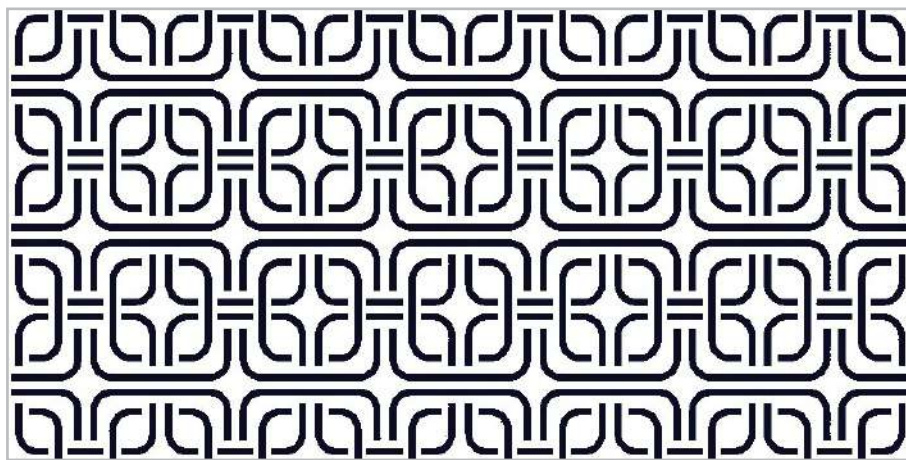
ELITE PLUS

60 X 120 cm

Polished | Rectified | Smooth



Cristiano Grey



Roma Blanco Decor



Della Buff



Eager Gris



Eager Light Grey



Essen Grey

ELITE PLUS
60 X 120 cm

Polished | Rectified | Smooth



Evoque Grey



Festive Yellow



Evoque White



Fiwa Silver



Festive White

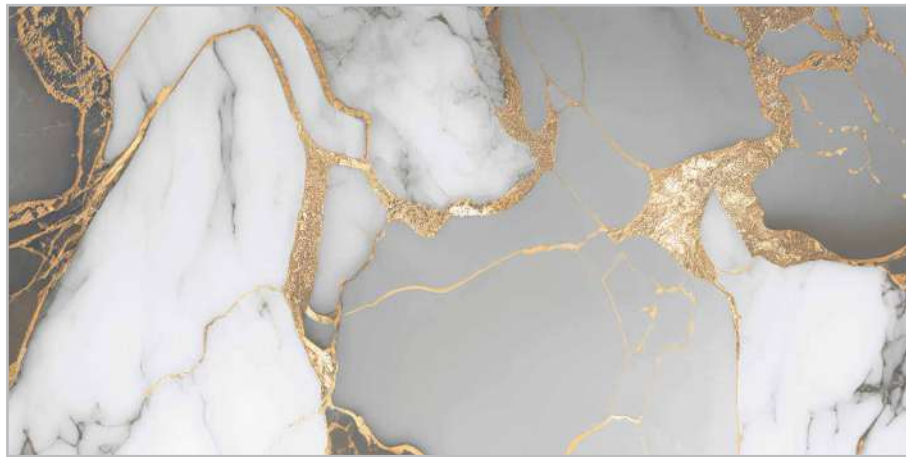


Frankel Ash

ELITE PLUS

60 X 120 cm

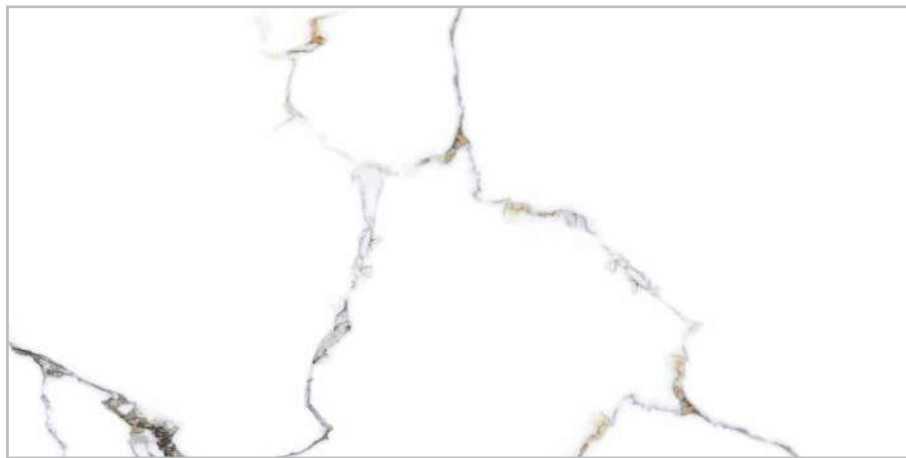
Polished | Rectified | Smooth



Galleria Grey



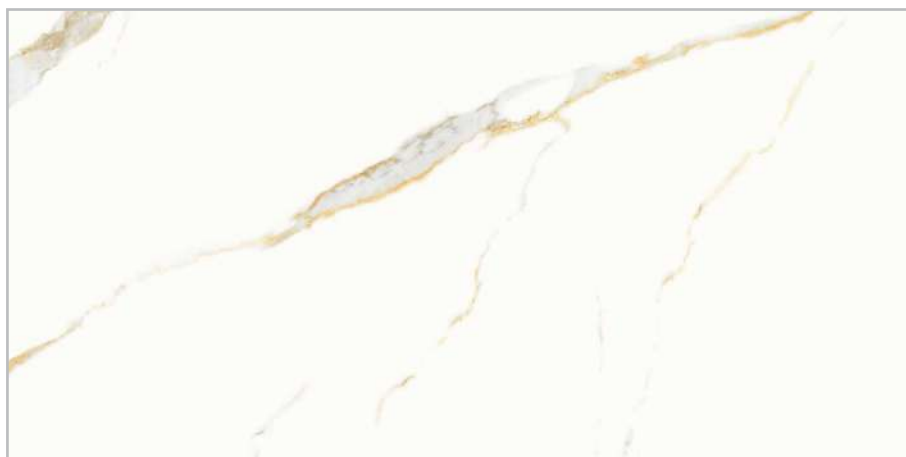
Grey Carara



Georgia White



Grifoni Onex



Claitz White



Heritage Crema

ELITE PLUS
60 X 120 cm

Polished | Rectified | Smooth



Heritage Ivory



Insta White



Ice Onyx Crema



Irvin Pearl



Imperial Bianco



Jarawa Aqua

ELITE PLUS
60 X 120 cm

Polished | Rectified | Smooth



Jarawa Violet



Madrid Buff



Jordan Steel



Makarana Steel



Madera Onyx



Mantra Aqua

ELITE PLUS
60 X 120 cm

Polished | Rectified | Smooth



Merrick Pearl



Monrovia Bianco



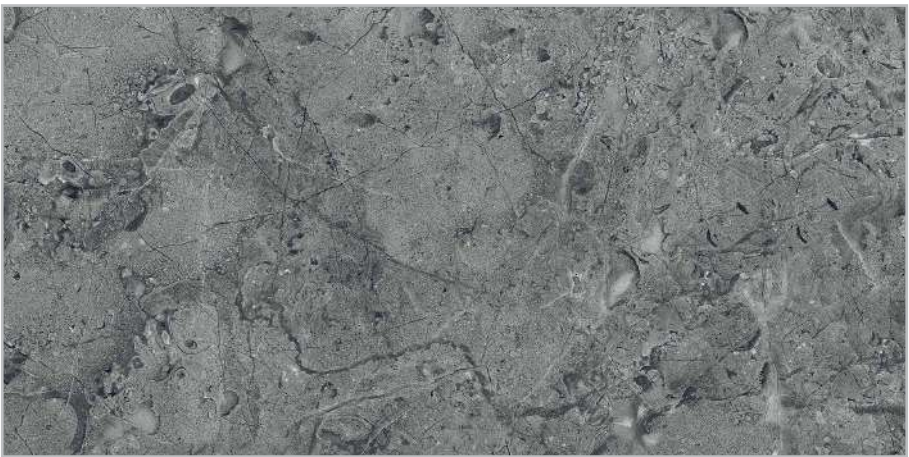
Merrick Silver



Monrovia Grey



Milo Oynx



Moscato Dark Grey

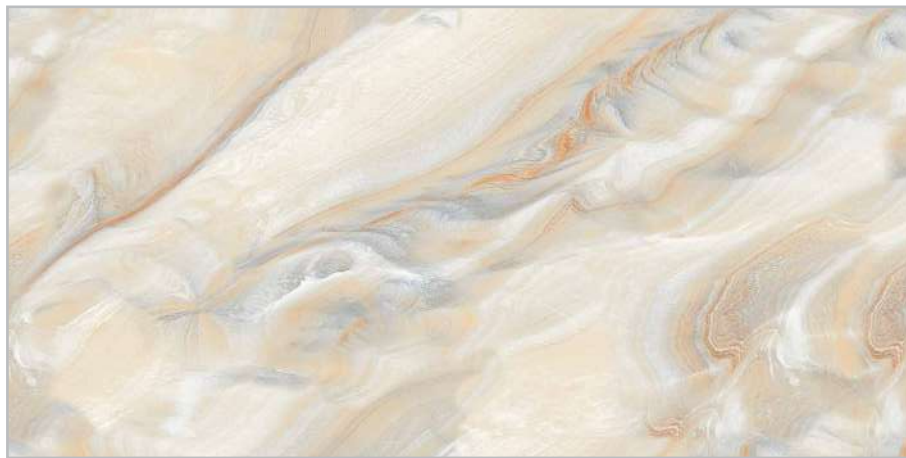
ELITE PLUS

60 X 120 cm

Polished | Rectified | Smooth



Moscato Lt Grey



Oblivion Amber



Oblivion Crema



Ocean Beige



Ocean Crema



Ocean Silver

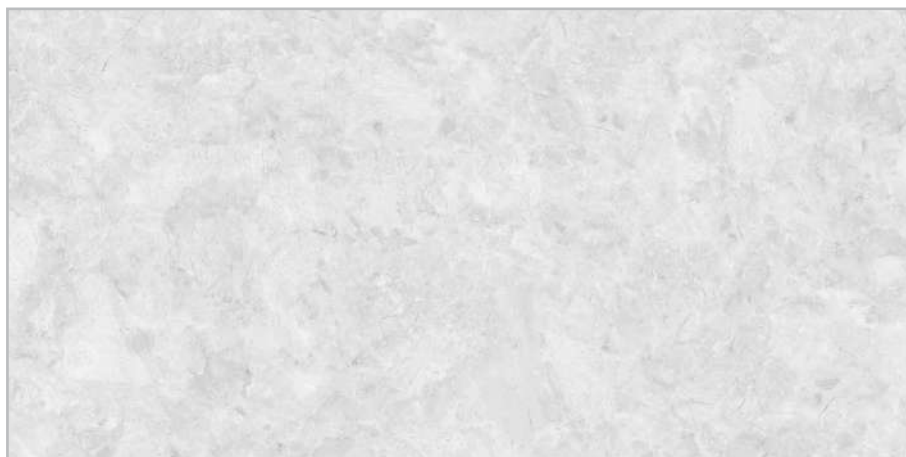
ELITE PLUS

60 X 120 cm

Polished | Rectified | Smooth



Olga Statuario



Oliva Lava



Oliva Pearl



Olympia Bianco



Olympia Marfil



Onicata Crema

ELITE PLUS
60 X 120 cm

Polished | Rectified | Smooth



Opera Brown



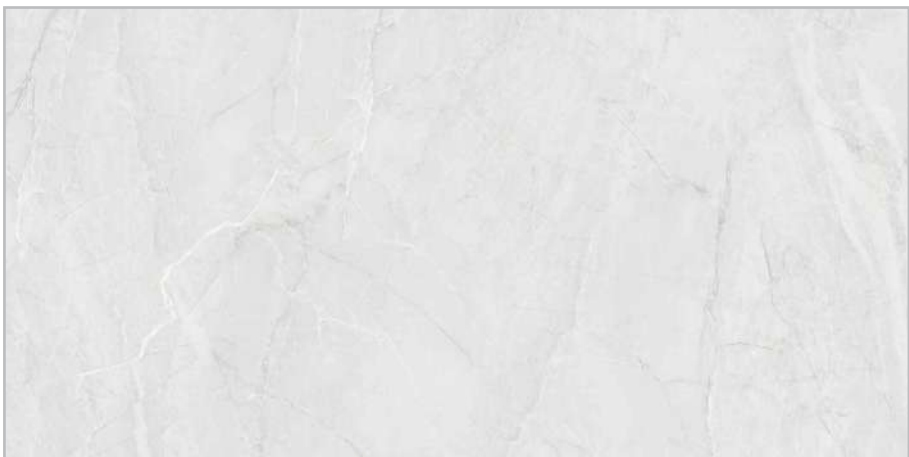
Oriento Gold



Opera Crema



Papyrus Green



Opera Silver



Papyrus Gold

ELITE PLUS

60 X 120 cm

Polished | Rectified | Smooth

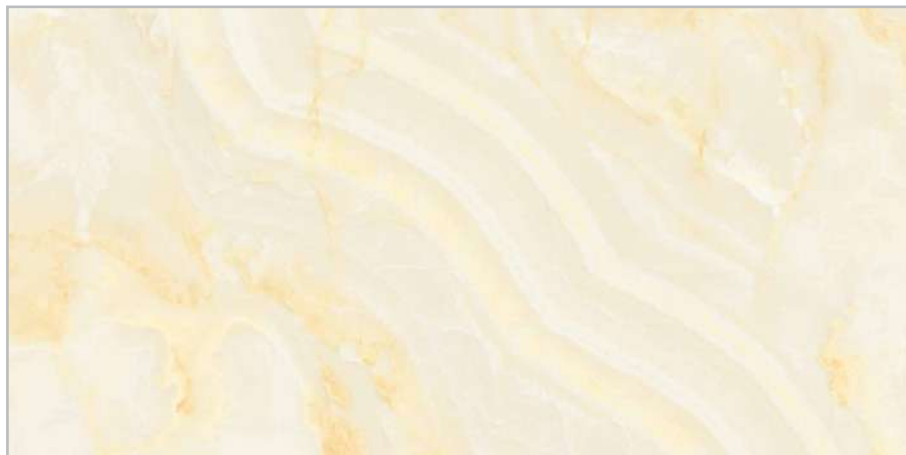
PORSELANO
NOT JUST TILES, LIFESTYLES
by
JOHNSON



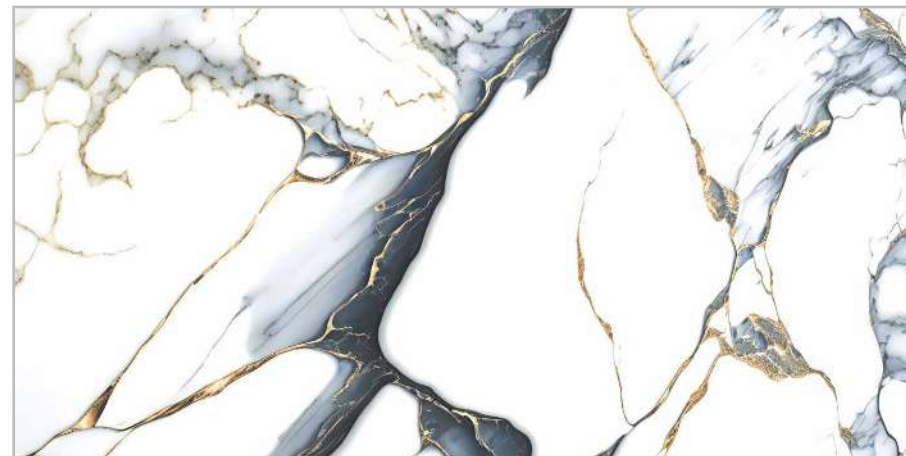
Pacific Bianco



Picasso Ivory



Pavia Onyx



Rainbow Black



Petro Bianco

ELITE PLUS

60 X 120 cm

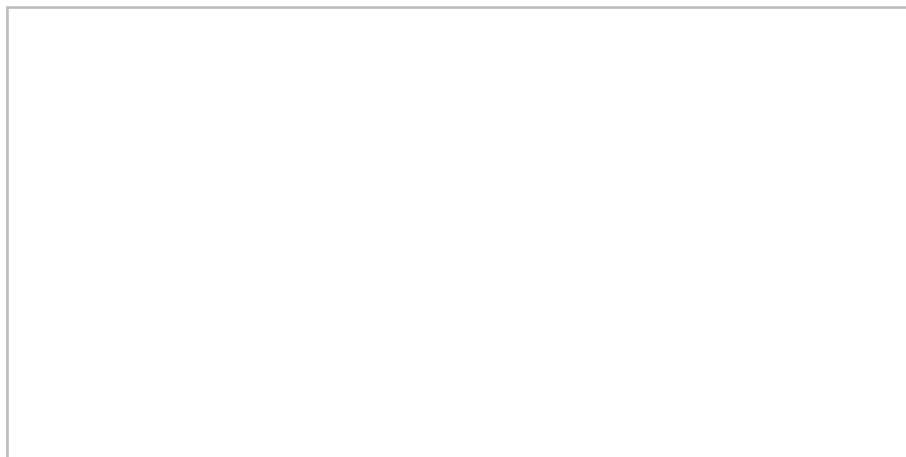
Polished | Rectified | Smooth



Relay Nature



Rhythm White



Roma Blanco



Rio Onyx Aqua



Rio Onyx Grey



Rio Onyx Lime

ELITE PLUS

60 X 120 cm

Polished | Rectified | Smooth



Royal Satvrio



Salvador Beige



Salvador Brown



Samara Grey



Samara Gris



Sinox Tan

ELITE PLUS
60 X 120 cm

Polished | Rectified | Smooth



Sydney Bianco



Trans white



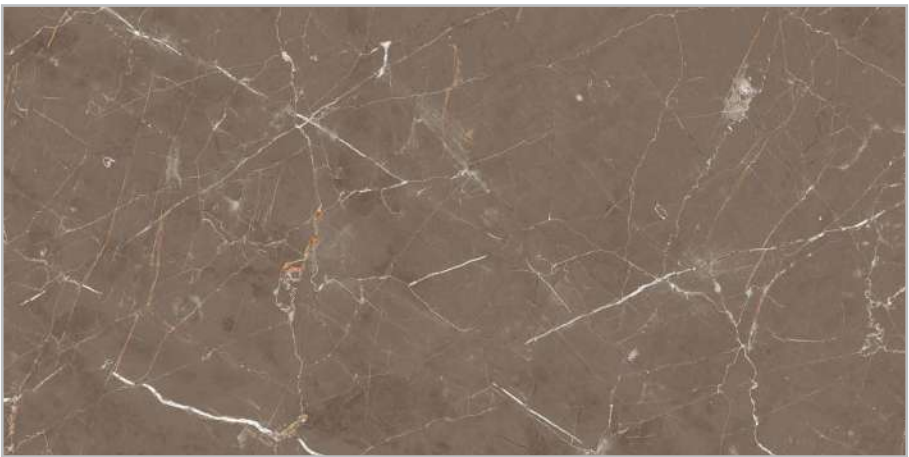
Traverto Pearl



Verna Bone



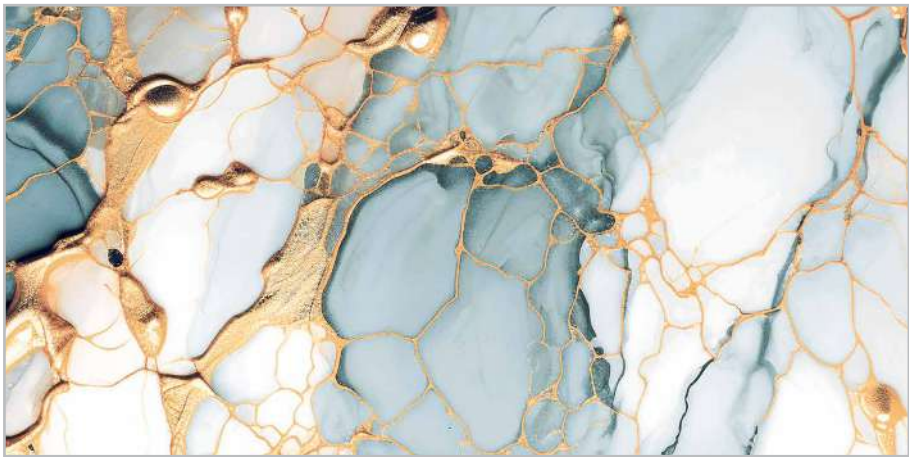
Vincent Beige



Vincent Brown

ELITE PLUS
60 X 120 cm

Special Polished | Rectified | Smooth



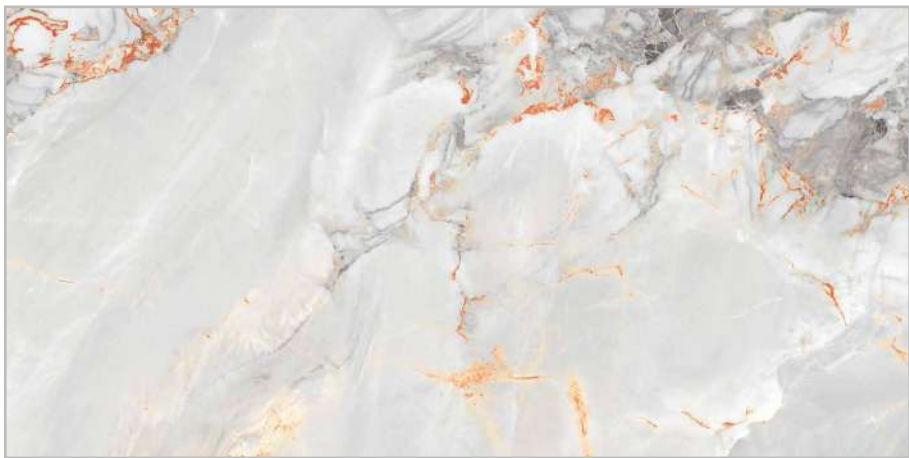
Cadence Green



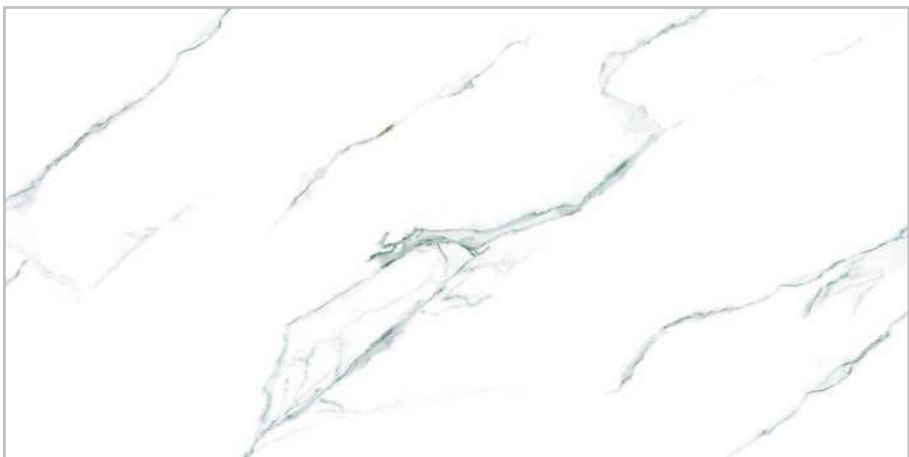
Jarawa Blue



Evoke Green



Kalahari Grey



Festive Aqua



Floor: Blowwood Brown



Floor: Glint Grey



Floor: Sahara Latte

ELITE PLUS

60 X 120 cm

Matt | Rectified | Smooth



Blowood Brown



Castor Dark



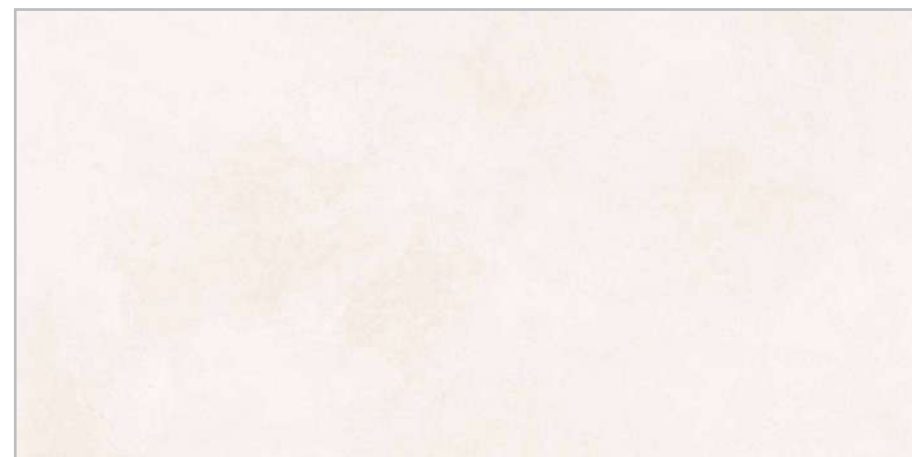
Castor Light



Cedar Lumber



Cemento Gris



Cemento White

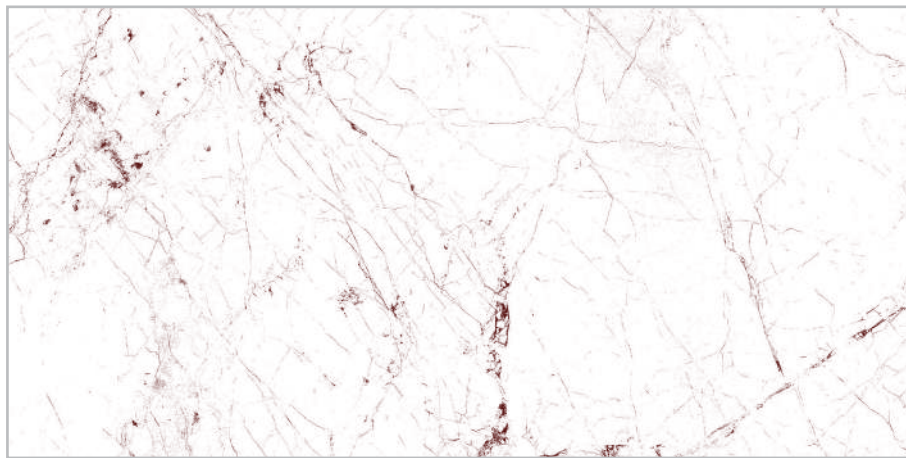
ELITE PLUS

60 X 120 cm

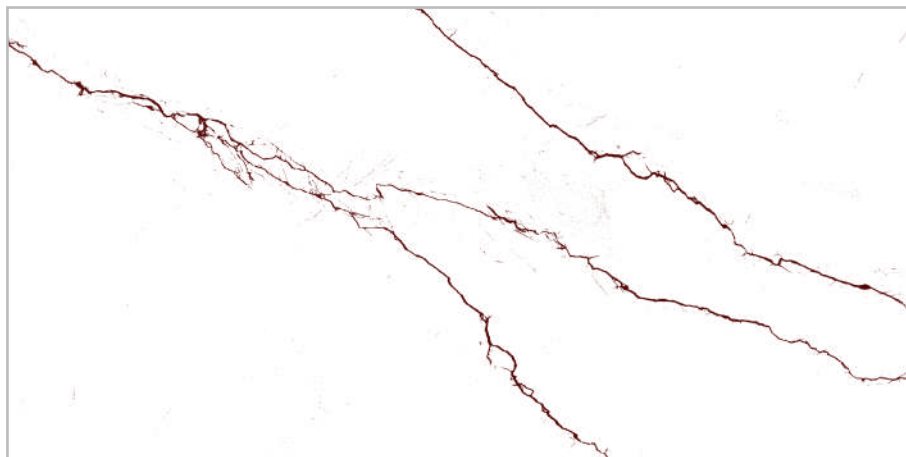
Matt | Rectified | Smooth



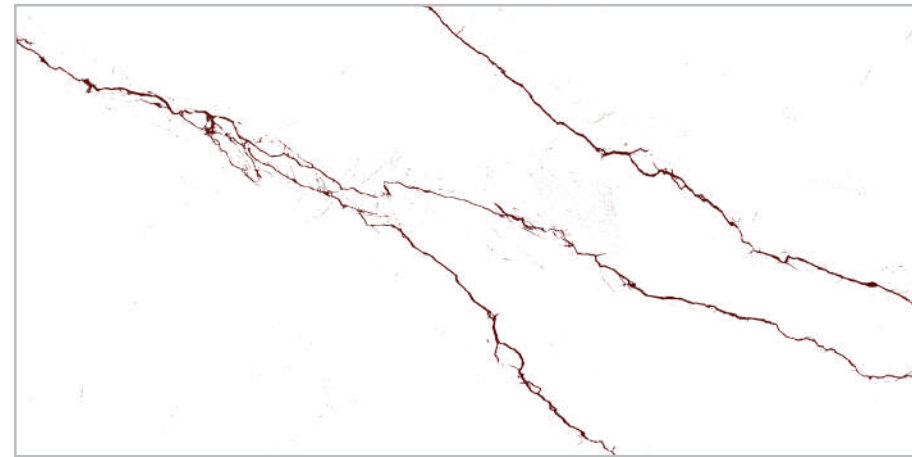
Estonia Gris



Genesis Lt Grey



Clint Grey



Clint Marbo



Lankan Wood



Mayar Dark

ELITE PLUS

60 X 120 cm

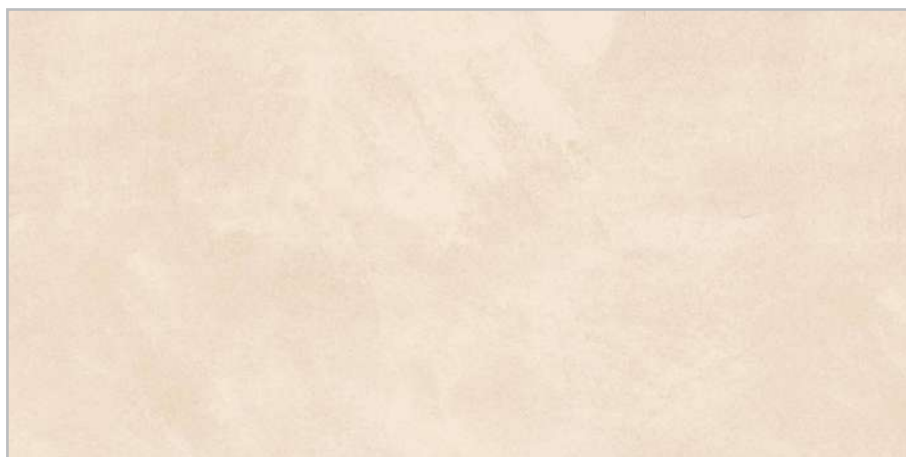
Matt | Rectified | Smooth



Mayar Light



Sahara Ash



Sahara Crema



Sahara Silver



Sahara Latte Décor



Sahara Latte

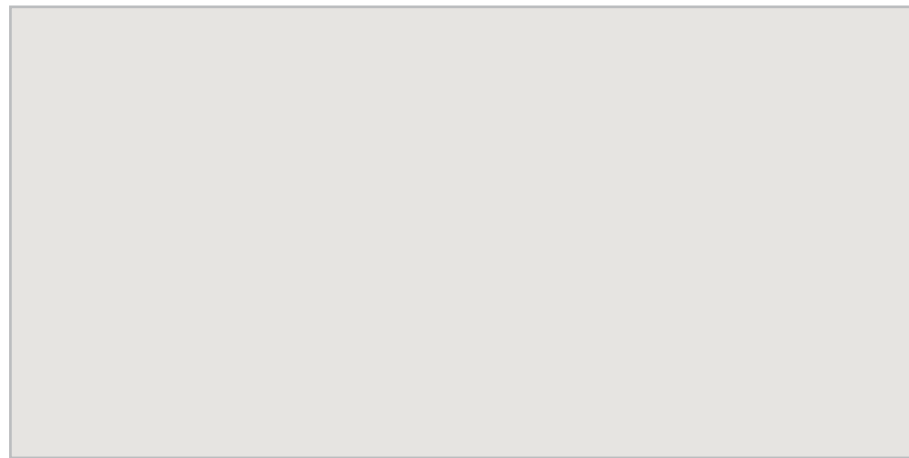
ELITE PLUS

60 X 120 cm

Matt | Rectified | Smooth



Sahara Silver



Super Lt Grey



Teak Feel



Walnut Lumber



Floor: Latina Brown



Floor: Champion Grey
Wall: Champion Ash

ELITE PLUS
60 X 120 cm

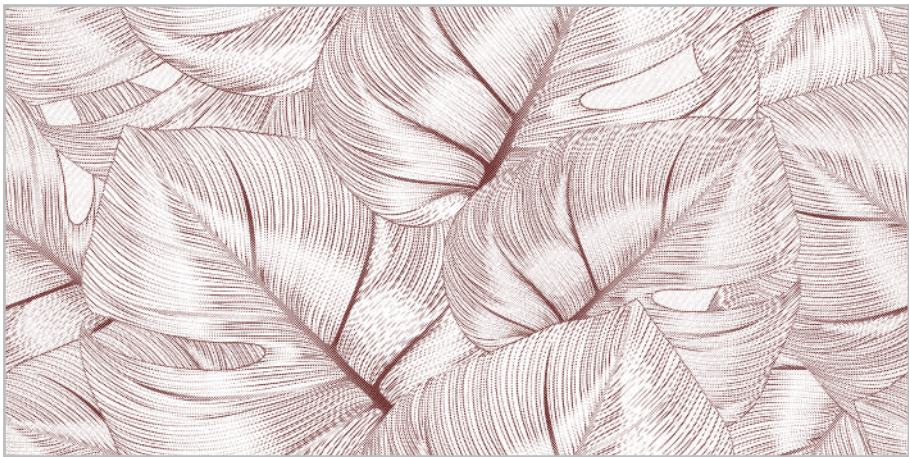
Rocker | Rectified | Heavy Structure



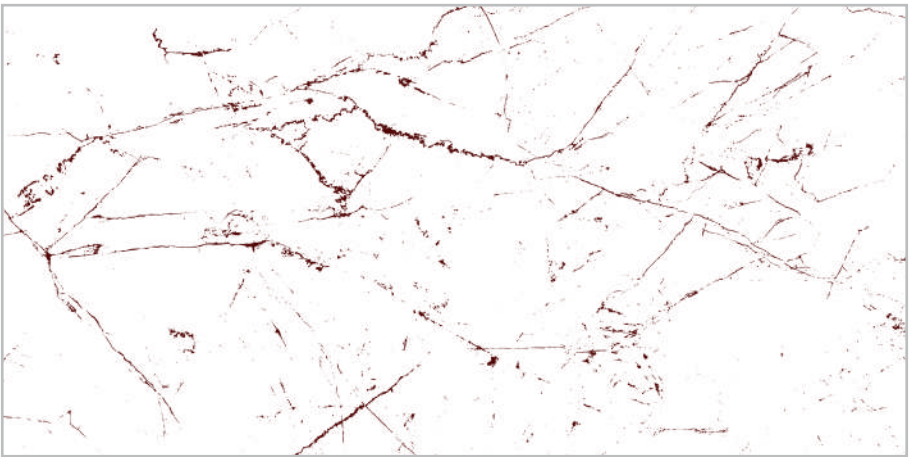
Ambrosia Dark



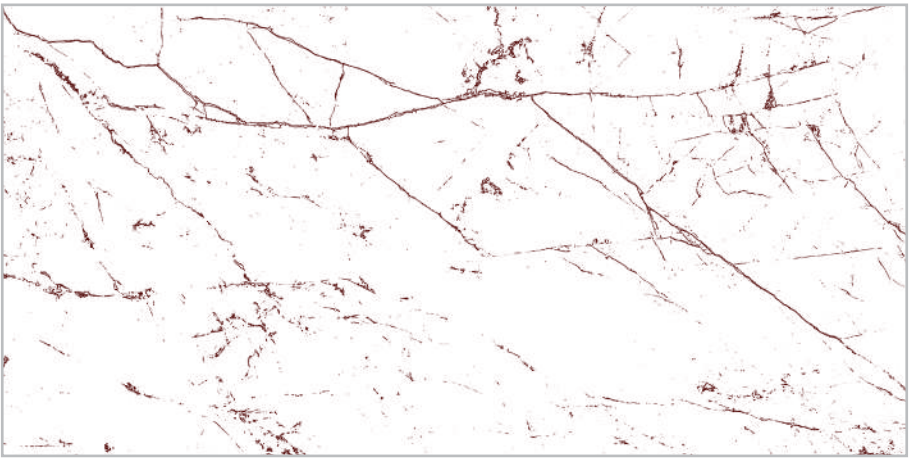
Ambrosia Light



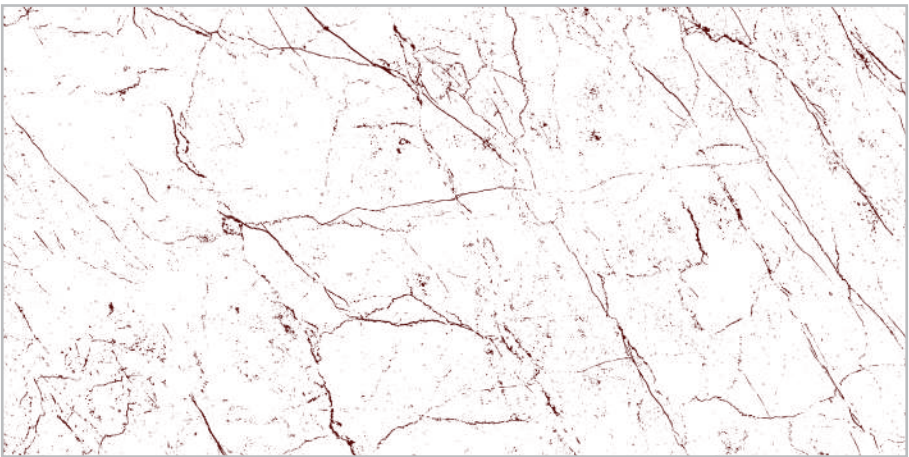
Aqua Leaves



Champion Ash



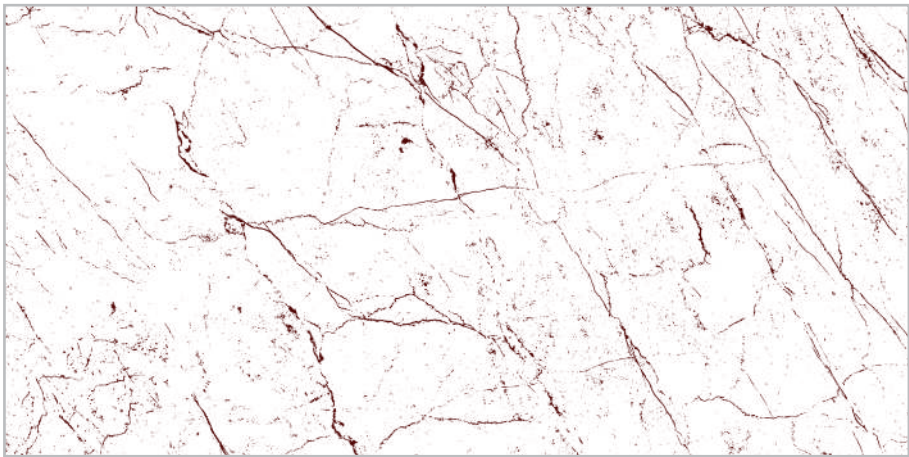
Champion Grey



Latina Beige

ELITE PLUS
60 X 120 cm

Rocker | Rectified | Heavy Structure



Latina Brown



Simran Bianco



Latina Cofee



Simran Brown



Latina Nero

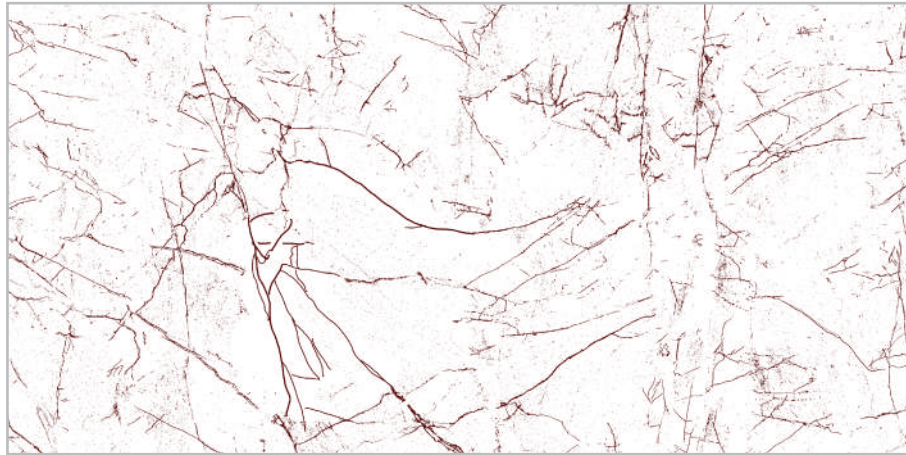


Simran Crema

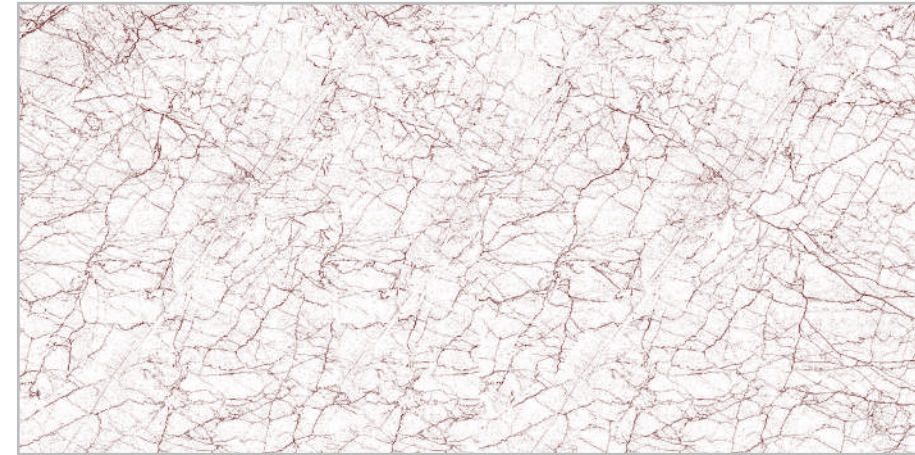
ELITE PLUS

60 X 120 cm

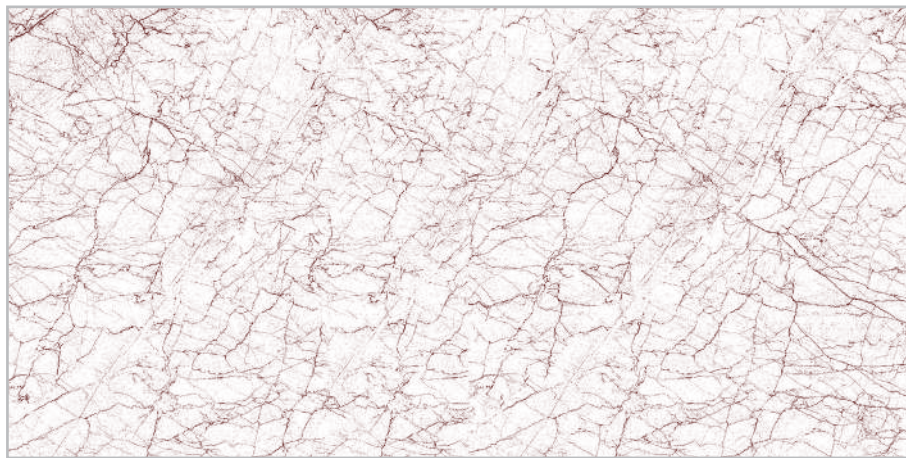
Rocker | Rectified | Heavy Structure



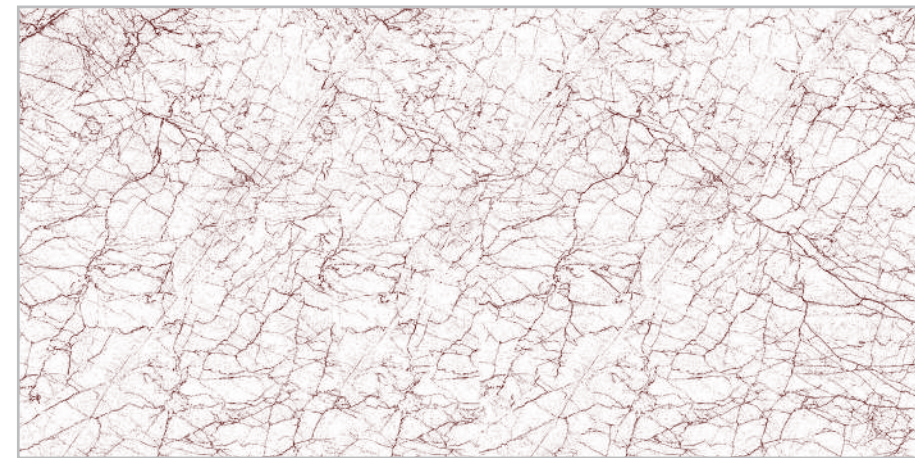
Simran Nero



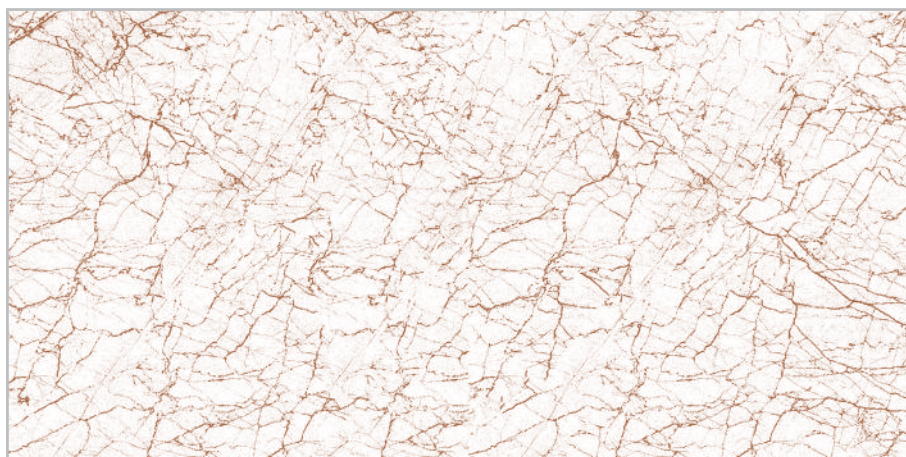
Spider Grey



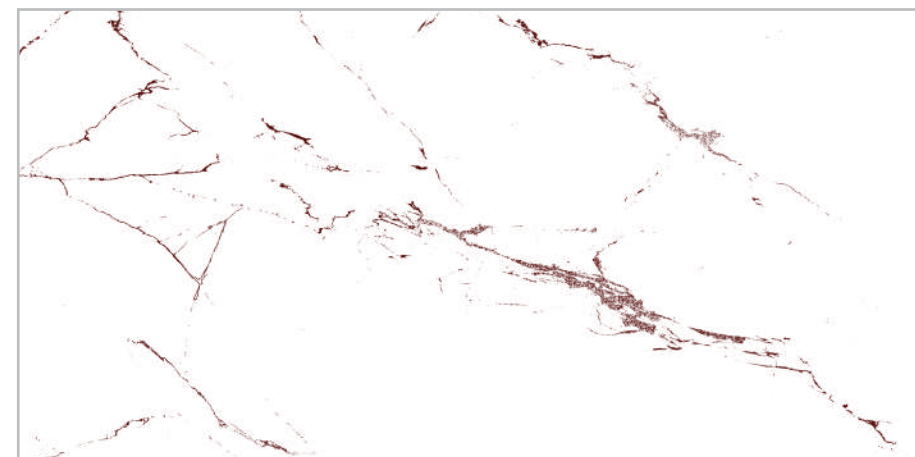
Spider Brown



Spider Nero



Spider Crema

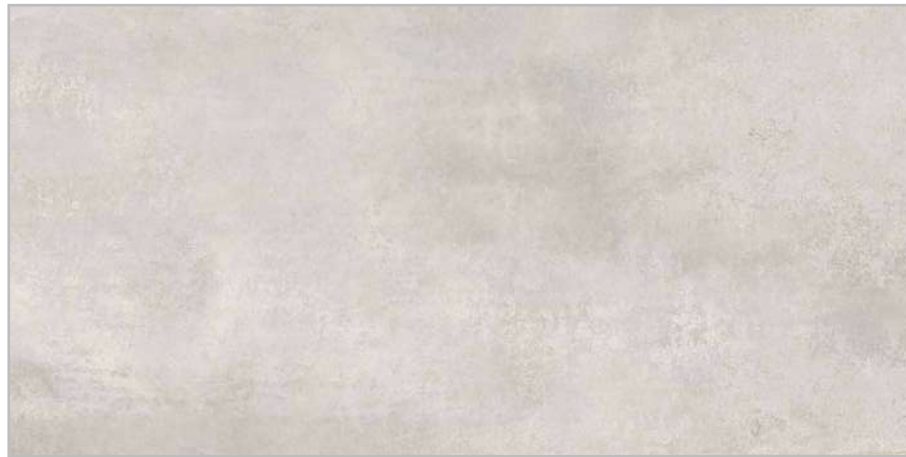


Vector White

ELITE PLUS

60 X 120 cm

Rocker | Rectified | Heavy Structure



Stellar Snow



Stellar Snow Decor



ELITE PLUS

60 X 120 cm

Satin | Rectified | Smooth



Glam Grey



Royale Fog Grey



Solar White





Floor: Arcadia Pearl



Floor: Malaga Crema



Floor: Silvia

ELITE PLUS
60 X 60 cm

Gloss | Rectified | Smooth



Arbescato Gris



Antila Beige



Arcadia Pearl



Borghini Natura



Antila Grey



Antila Natura



Beige Bottochino



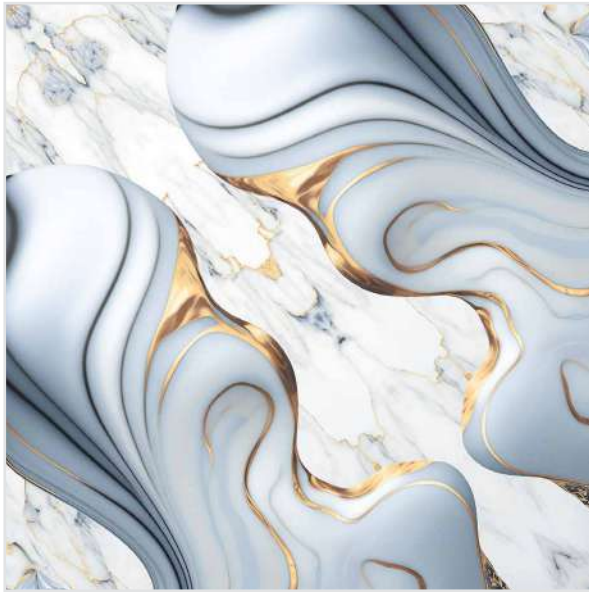
Calacatta Classic

ELITE PLUS
60 X 60 cm

Gloss | Rectified | Smooth



Carrara Linea



Centenary Blue



Eger Lt Grey



Elise Bianco



Clare Onyx



Eger Gris



Beige Bottochino



Glory White

ELITE PLUS
60 X 60 cm

Gloss | Rectified | Smooth



Greenland



Kifa Bianco



Kratos Bianco



Locosta Pearl



Kifa Dk Grey



Kifa Lt Brown



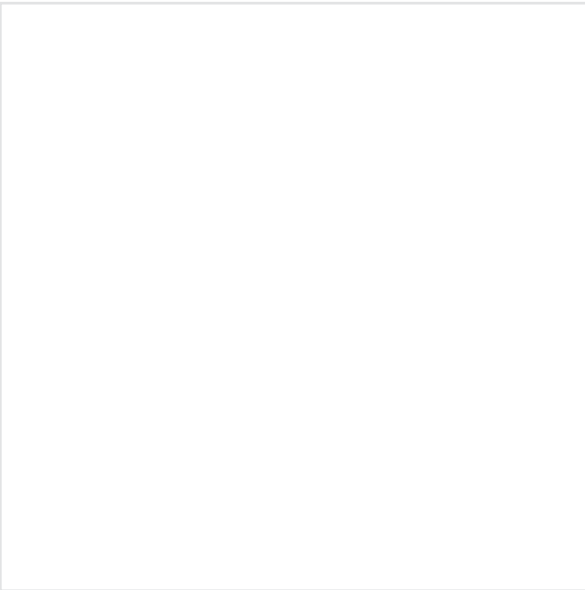
Macau Beige



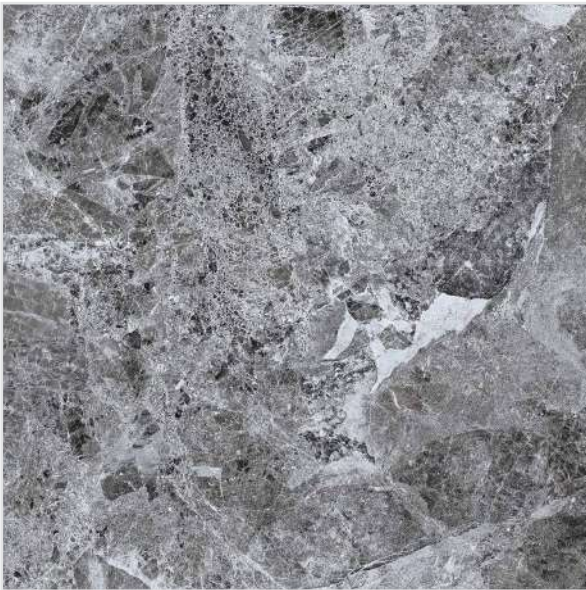
Malaga Crema

ELITE PLUS
60 X 60 cm

Gloss | Rectified | Smooth



Monza Blanco



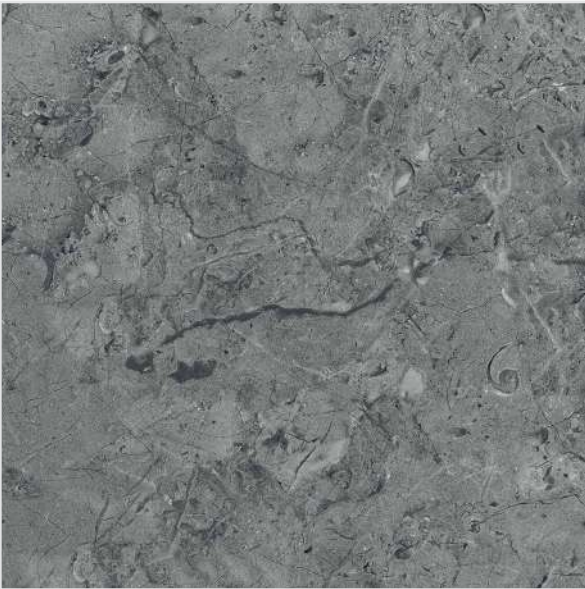
Morocco Charcoal



Moscato Brown



Moscato Crema



Moscato Dk Grey



Moscato Lt Grey



Nucleus Bianco



Neo Wave

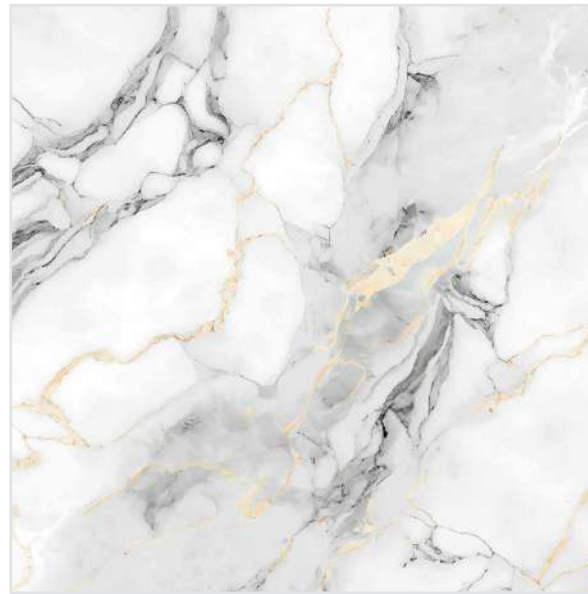
ELITE PLUS

60 X 60 cm

Gloss | Rectified | Smooth



Omega White



Pacey Gold



Saturn



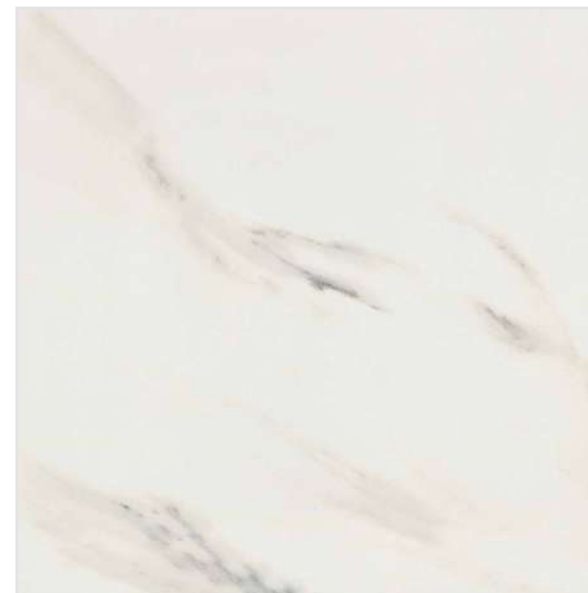
Silvia



Perola Ivory



Riglos Gold



Spectra Omega



Valencia Beige

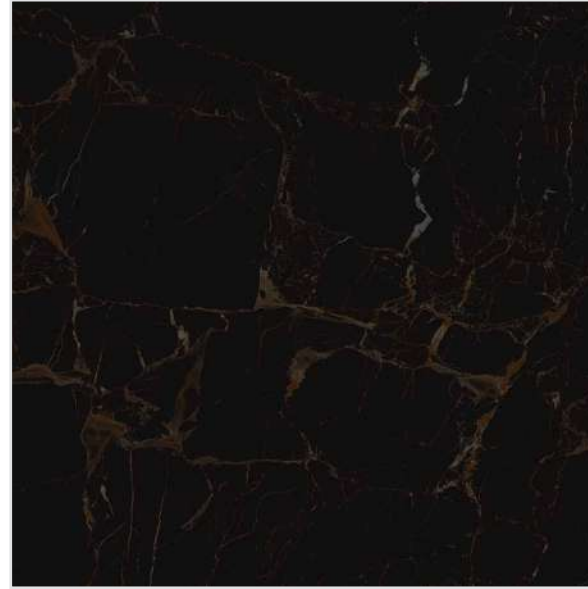
ELITE PLUS

60 X 60 cm

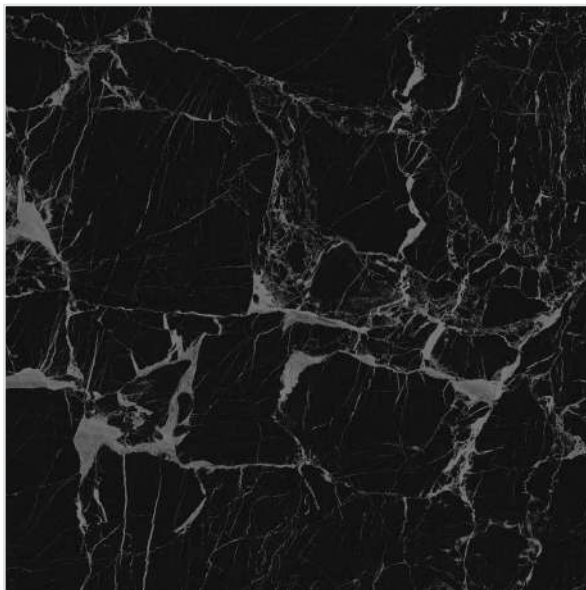
High Gloss | Rectified | Smooth



Euphoria Blue



Estonia Gold



Estonia Silver

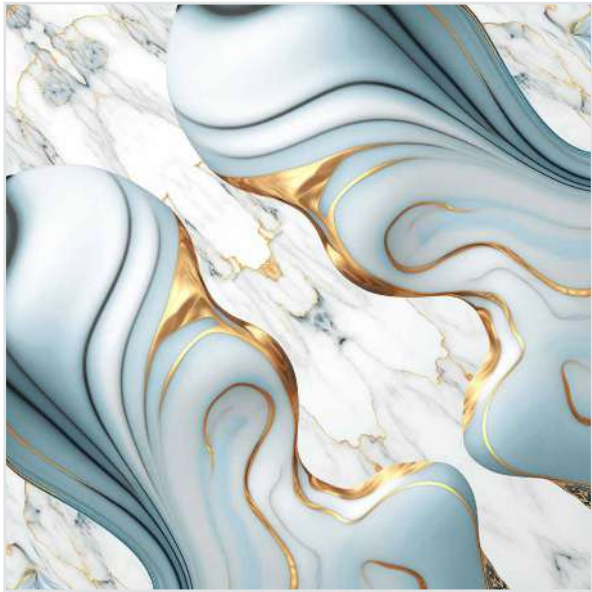


ELITE PLUS
60 X 60 cm

Special Polished | Rectified | Smooth



Aura Golden Aqua



Centenary Aqua



Stunning Green



Mirth Green



Elegant Gold

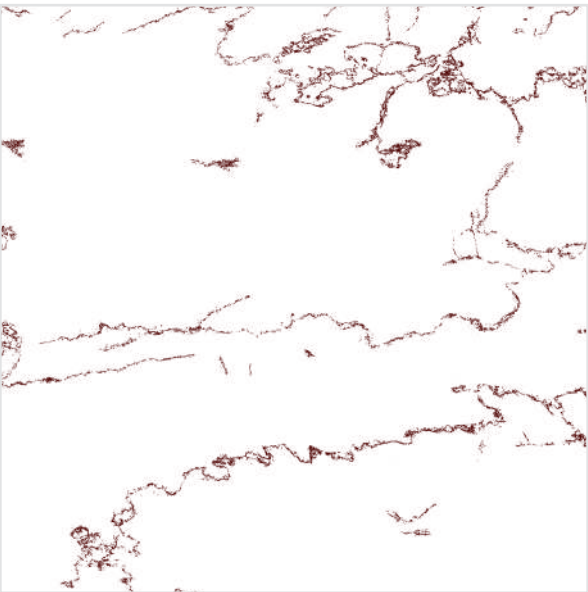


Fresno Aqua

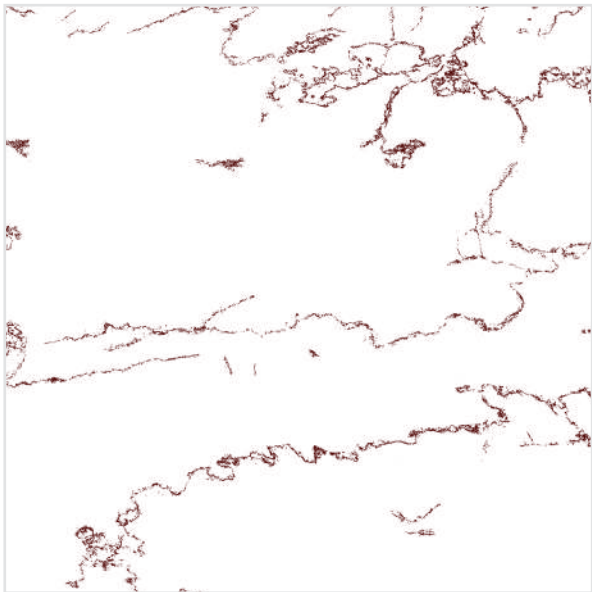
ELITE PLUS

60 X 60 cm

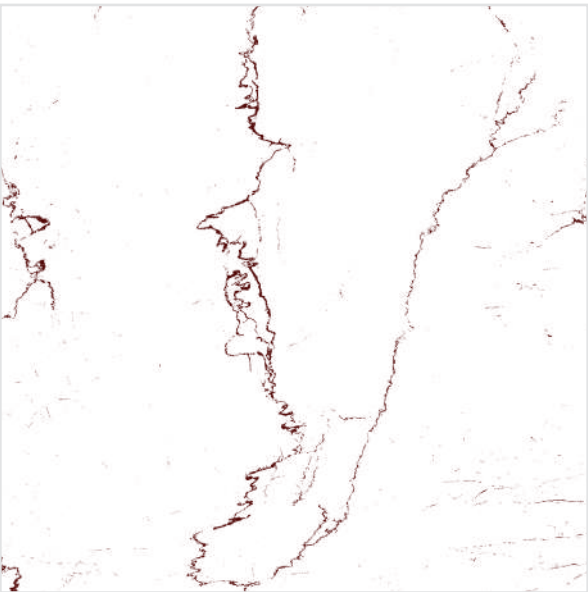
Rocker | Rectified | Smooth



Pride Grey



Pride Pearl



Pixel Thunder





Floor: Kashmir Wood Brown



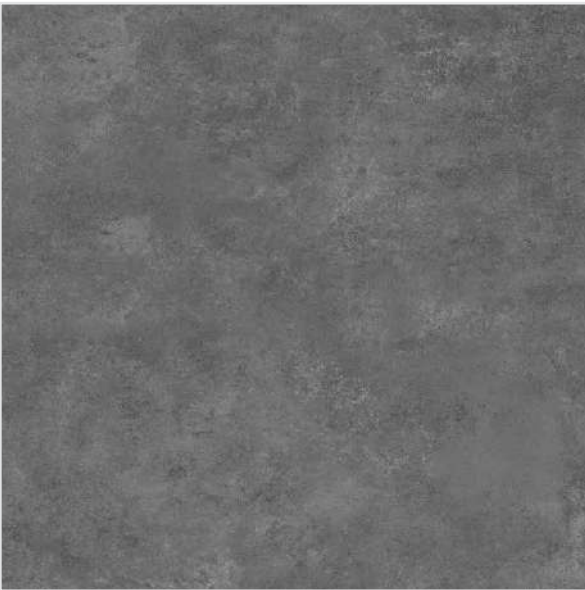
Floor: Amazone



Floor: Teak Feel

ELITE PLUS
60 X 60 cm

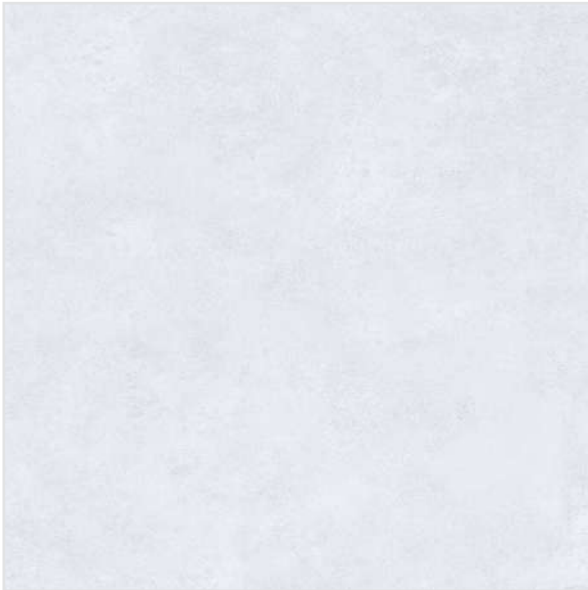
Matt | Rectified | Smooth



Amazon Ash



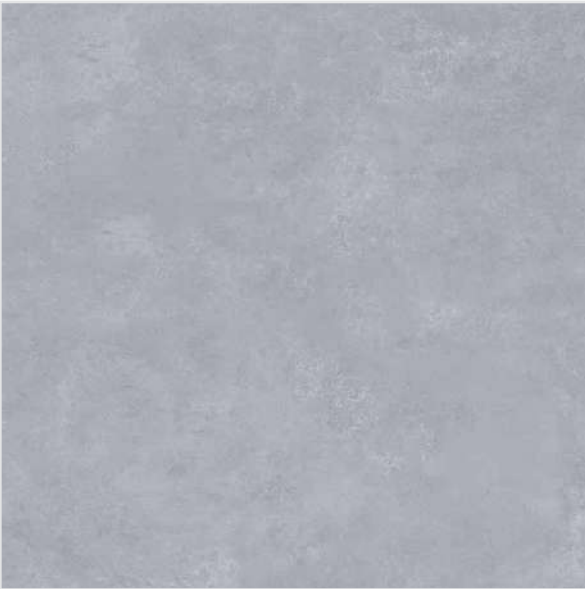
Amazon Black



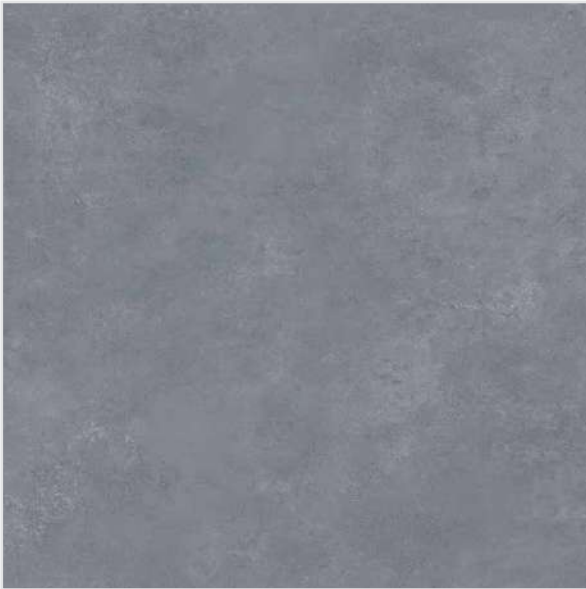
Amazon Silver



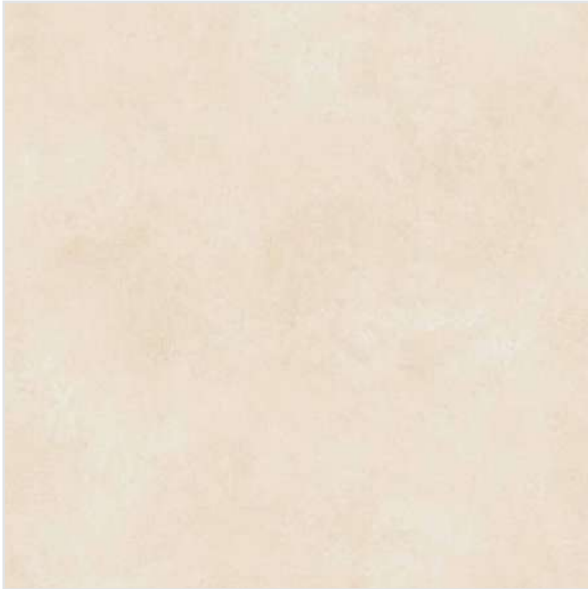
Amazon Wood Brown



Amazon Cemento



Amazon Gris



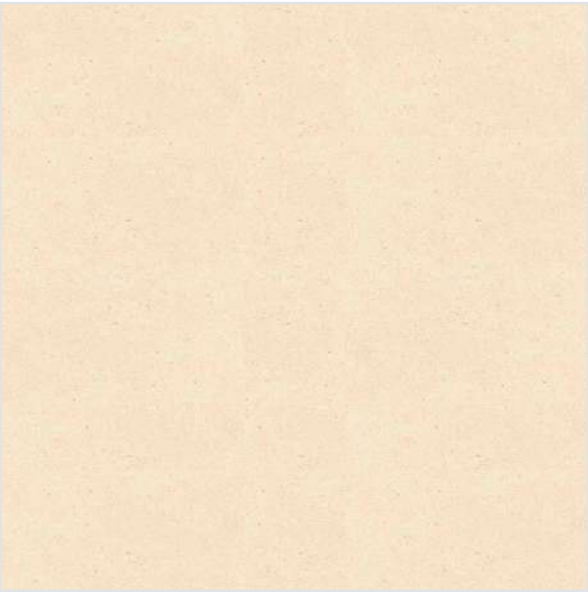
Arsenia Beige



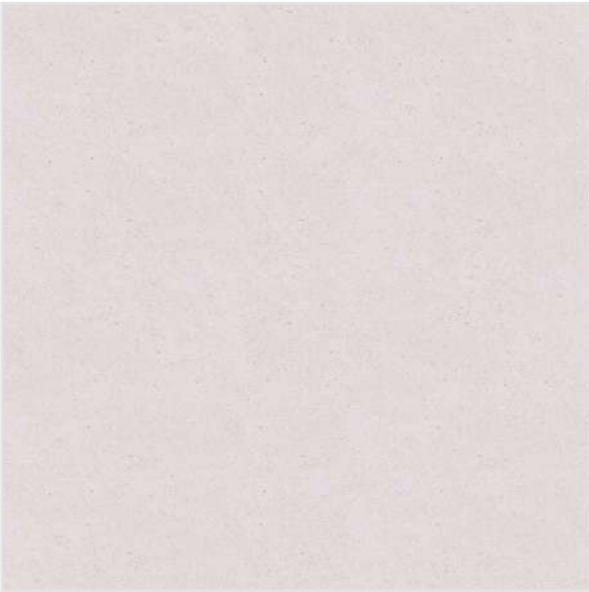
Ash Monte

ELITE PLUS
60 X 60 cm

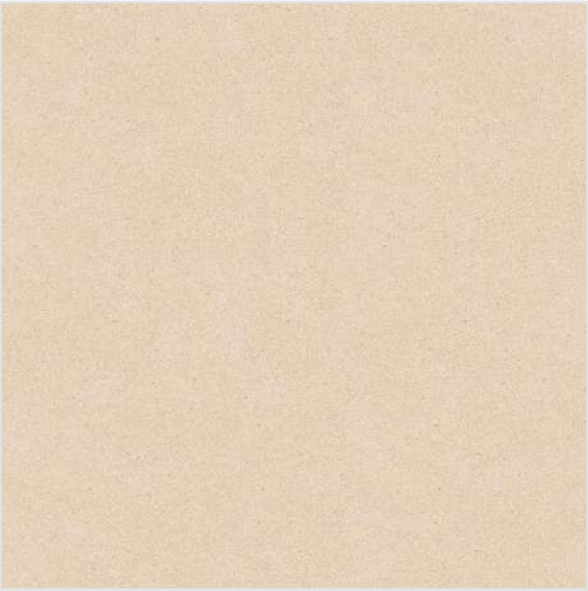
Matt | Rectified | Smooth



Chicago Beige



Chicago Bianco



Chicago Ivory



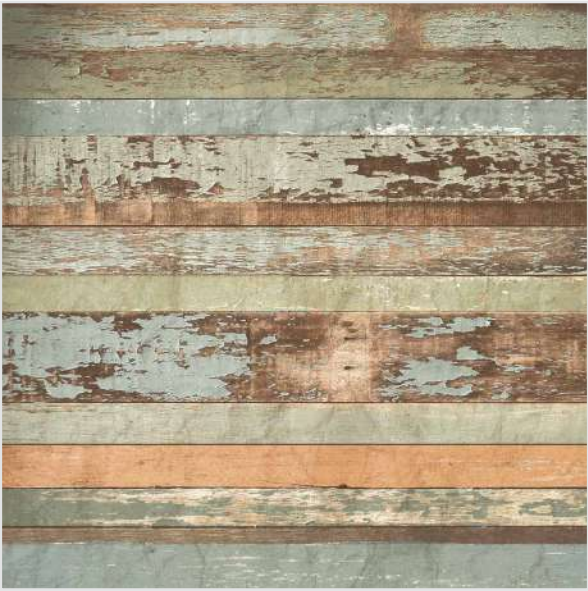
English Chestnut



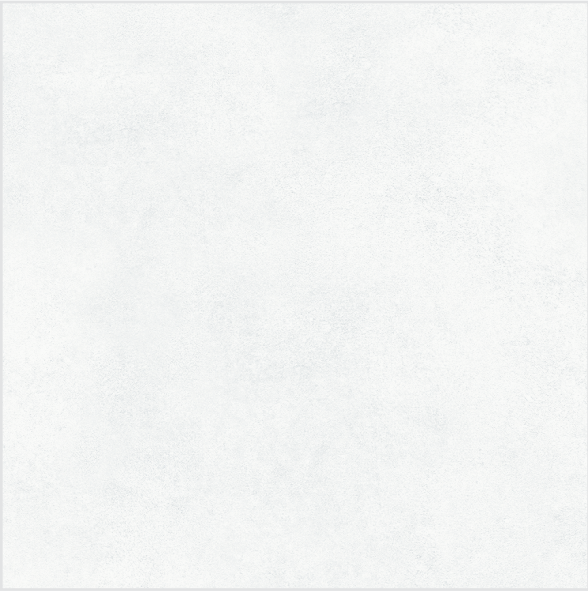
Flak Green



Flak Grey



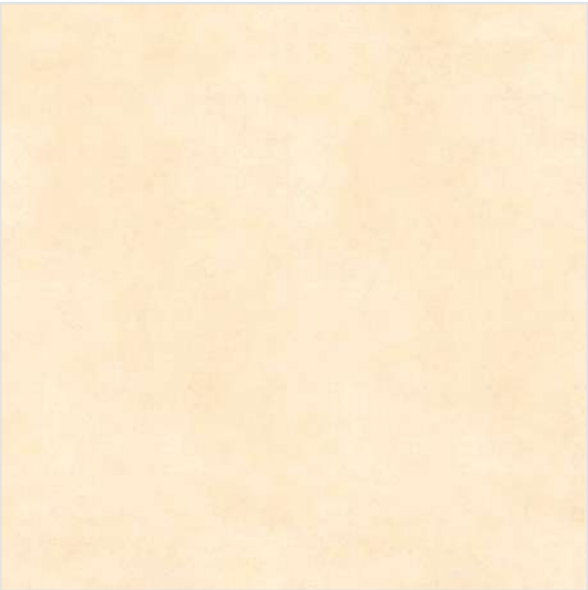
Flak Verde



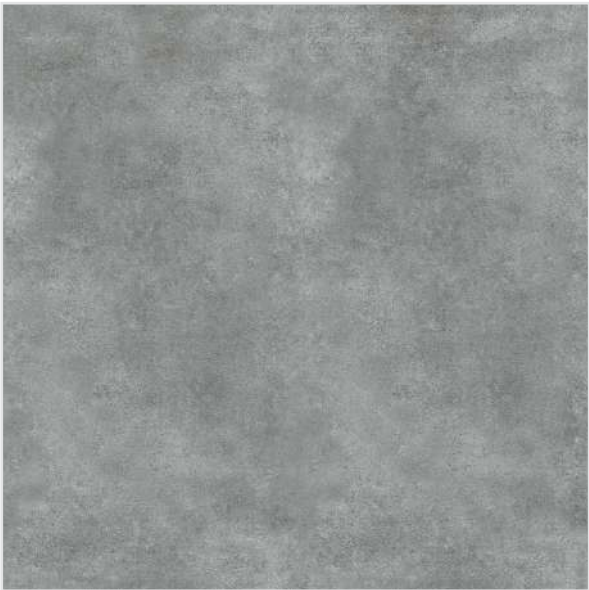
Fossil Bianco

ELITE PLUS
60 X 60 cm

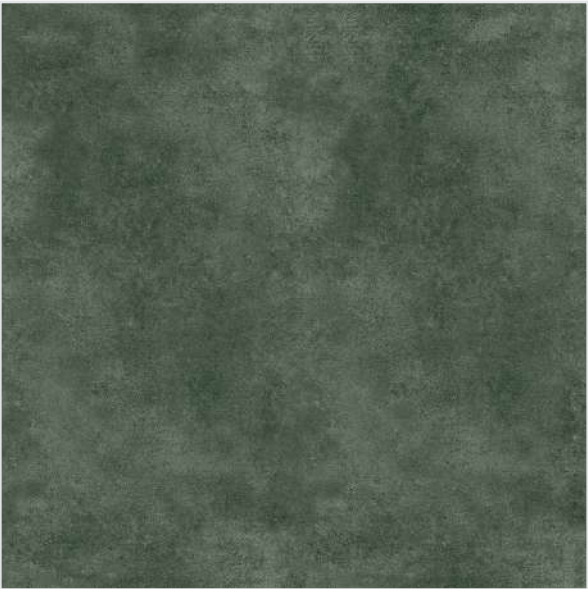
Matt | Rectified | Smooth



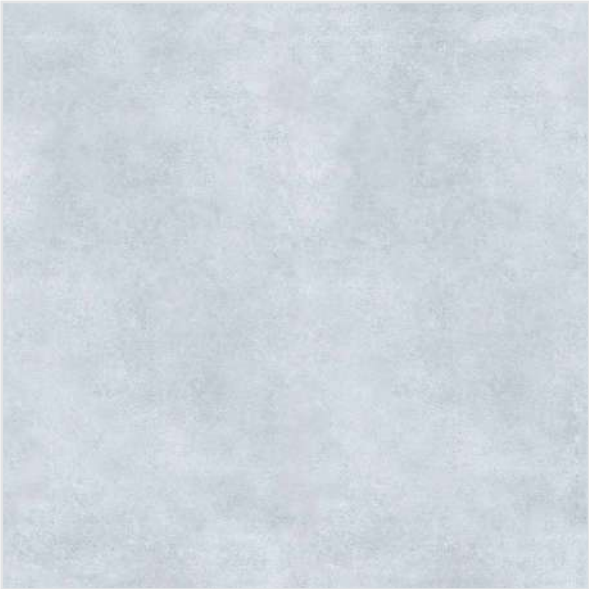
Fossil Crema



Fossil Dk Gris



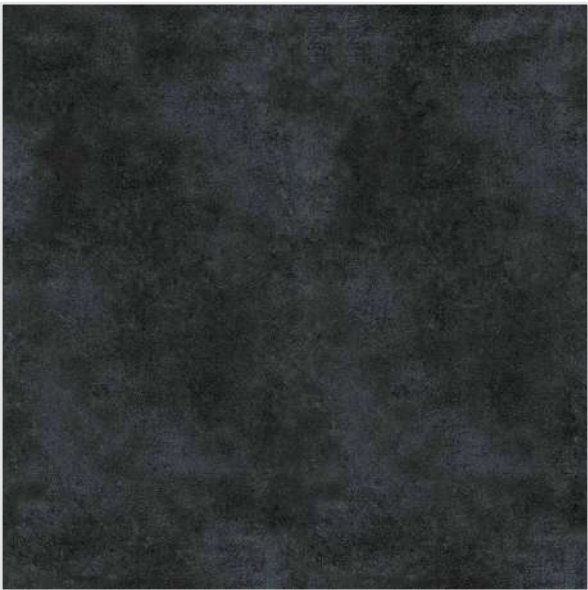
Fossil Green



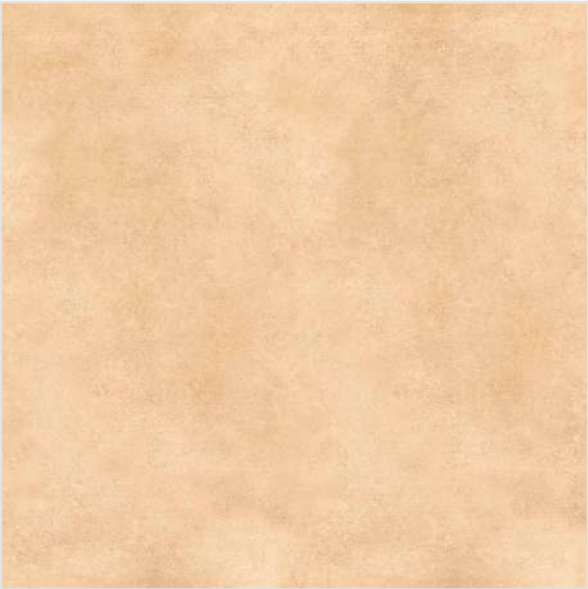
Fossil Lt Gris



Fossil Moss



Fossil Nero



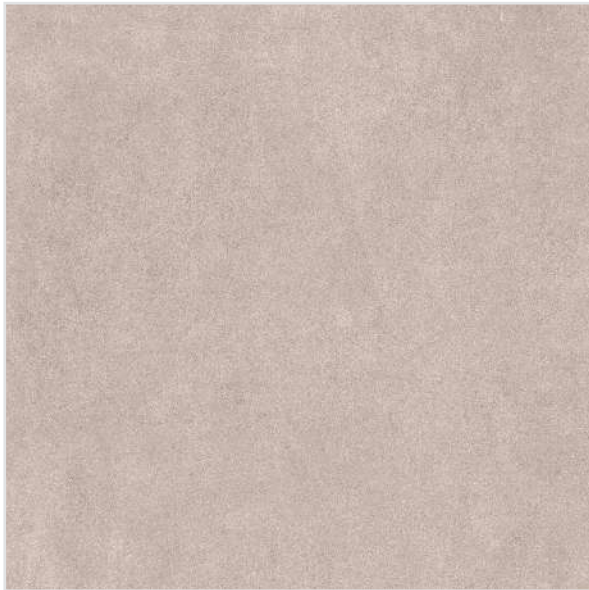
Fossil Sepia

ELITE PLUS
60 X 60 cm

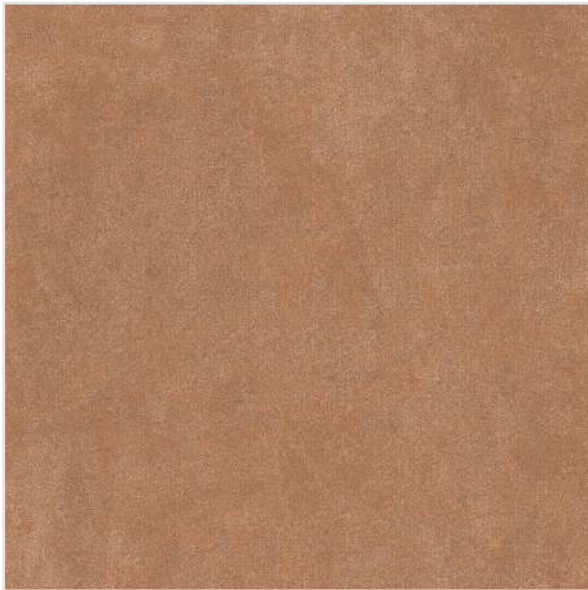
Matt | Rectified | Smooth



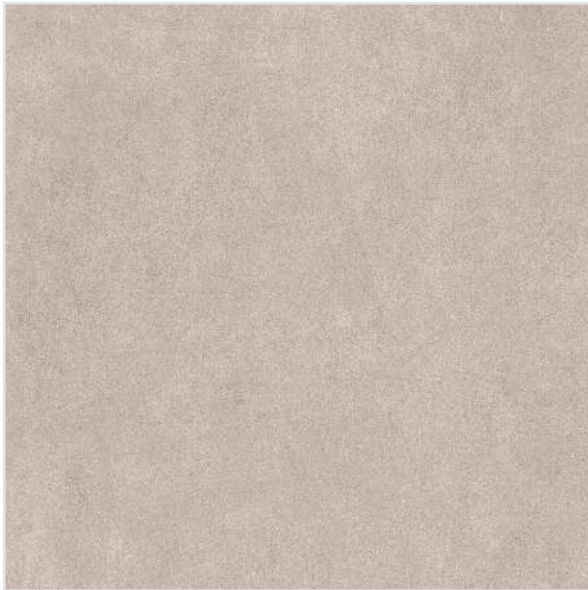
Kashmir Br Wood



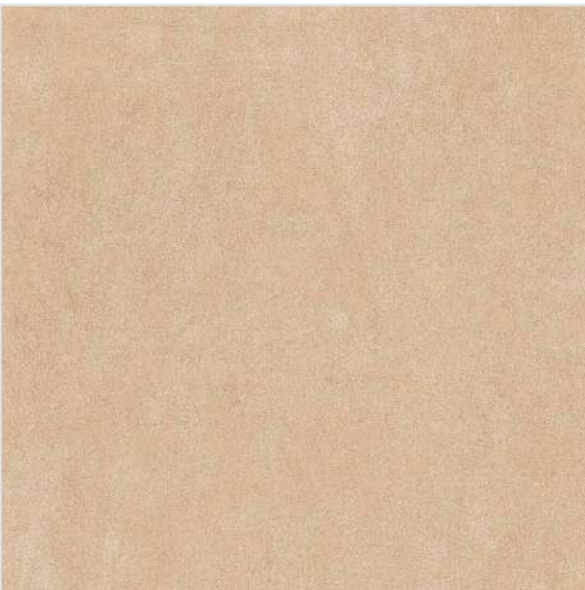
Ottawa Ash



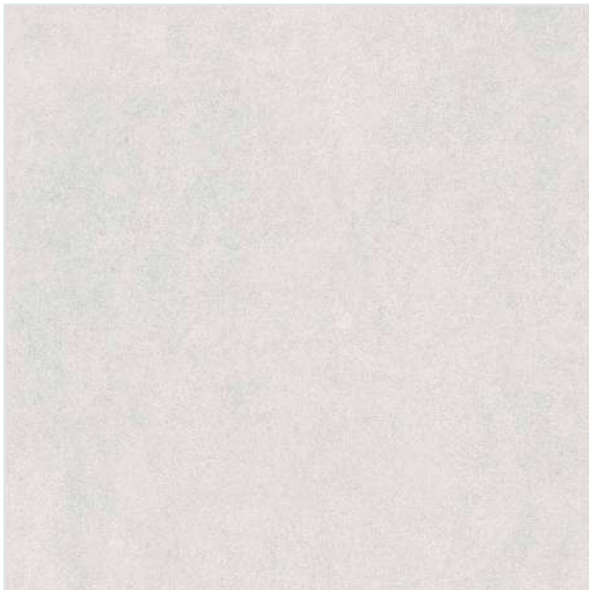
Ottawa Brown



Ottawa Grey



Ottawa Beige



Ottawa Bianco



Oxford Gris



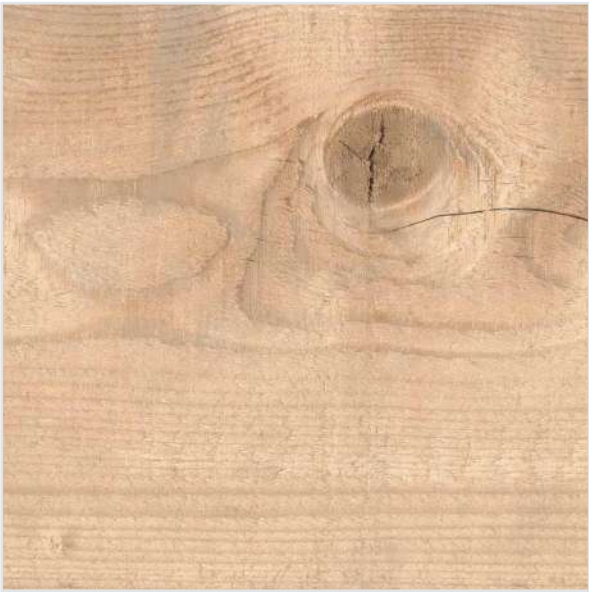
Perdot Nero

ELITE PLUS
60 X 60 cm

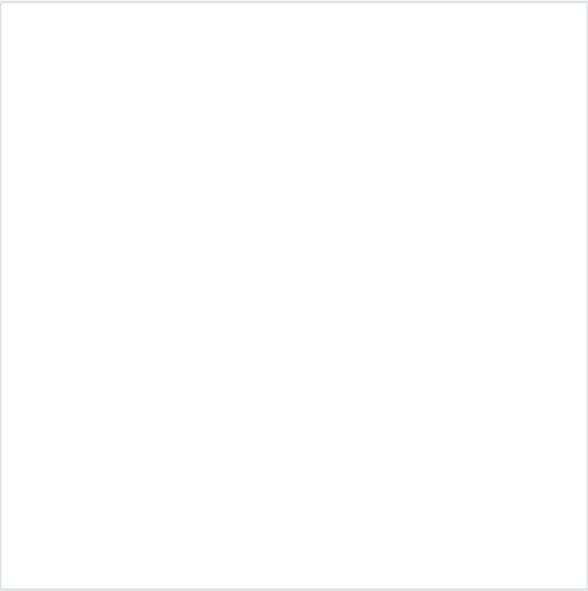
Matt | Rectified | Smooth



Peridot Gris



Salvo Brown



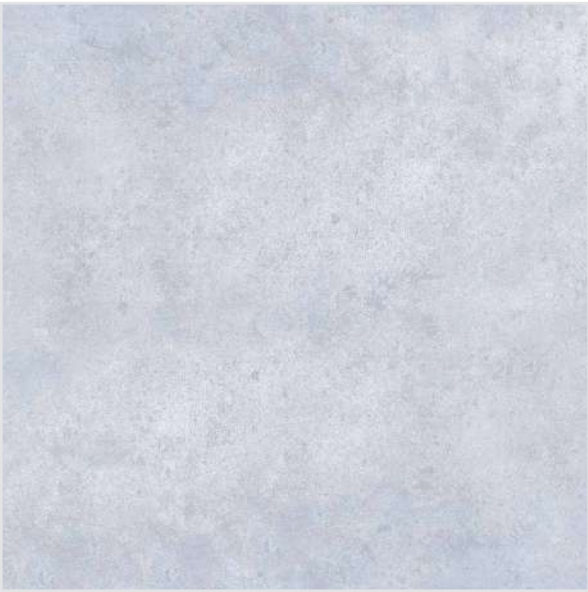
Sun White



Teak Feel



Willis Beige



Willis Gris



Willis Moss



Willis Nero

ELITE PLUS

60 X 60 cm

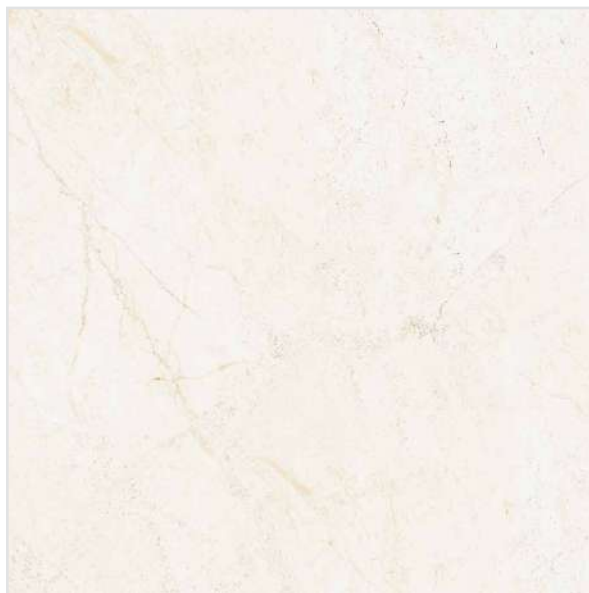
Satin | Rectified | Smooth



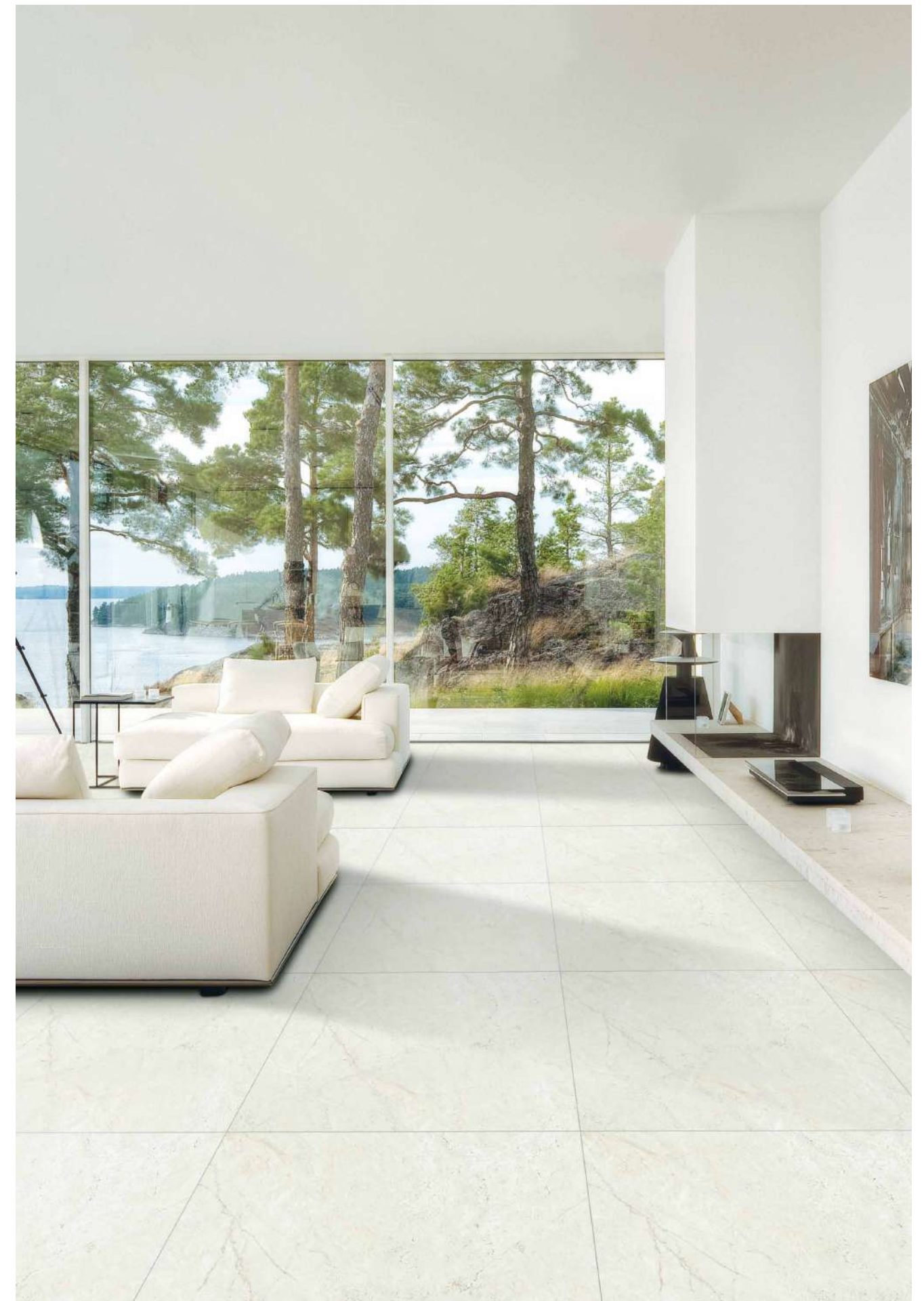
Linear Wood



Madona



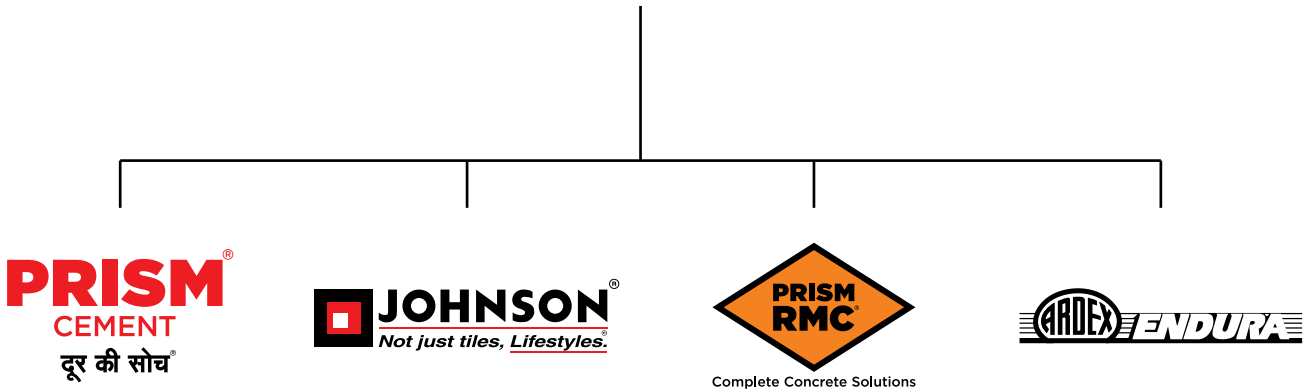
Pyrus Ivory



A journey from tiles to lifestyles - measured in square feet

H&R Johnson (India) is a division of Prism Johnson Limited, one of India's foremost Integrated Building Materials conglomerates.

PRISM JOHNSON LIMITED



Established in 1958, Johnson is one of the oldest and trusted brands in the country. Built on the strong and unswerving foundations of quality and innovation, this trust has only grown in these decades gone by; and continues to grow. Starting with tiles, the brand soon diversified into offering lifestyle solutions in the realms of Engineered Marble & Quartz and Bath Solutions. There by becoming India's most Integrated Lifestyle Solutions brand. Every product that comes bearing the H&R Johnson insignia is a symbol of the same quality and innovation focused on adding value to the lives of our consumers.

Pioneering Innovations, A Way of Life

At H&R Johnson the term innovation is at the heart of everything we do. That's why it is backed by credible research. Every product attempts to fill in a void left by conventional offerings in the category, in an innovative manner. It's this value we place on cutting-edge innovation that makes us strive for more and eventually deliver more. A quality and a way of working that has redefine consumer lifestyles and expectations.

- Anti-skid & Water-repellent Tiles for Bathrooms
- Rectified Wall Tiles
- Johnson Marbonite - Vitrified Wall and Floor Tiles
- Joint Free Tiles
- Large Format Slabs
- Digitally Printed Wall & Floor Tiles
- Germ Free Tiles & Sanitaryware
- Exterior & Industrial Flooring Solutions

India's Most Integrated Tile Manufacturing Company



Being India's most trusted tiling brand requires that trust to be maintained in every stage of developing each and every product that bears the name of the brand. That's why at H&R Johnson, our Felspar Mines are Self-owned, the soluble salts and inks are manufactured in-house, and even the dies and punches are made in-house. All, so that every step in the process comes with the same quality and assurance, that you expect from us.



Manufacturing Excellence

Johnson has the most modern manufacturing units across strategic locations in India. Our manufacturing facilities employ the best technology from world leaders in tile manufacturing equipment. All our plants are ISO compliant with both 9001 and 14001 certifications as well as OHSAS 18001 certification.



Certifications



Johnson is India's largest tile manufacturer. It's commitment to quality, service and innovation is backed by certification from the world's leading accreditation bodies.

ISO 9001: 2015
For implementing a Quality Management System for the Manufacture and Supply of Ceramic Tiles.

ISO 45001: 2018
For implementing an Occupational Health & Safety Management System for the Manufacturing of Ceramic Tiles.

ISO 14001: 2015
For implementing an Environmental Management system for the Manufacturing of Ceramic Tiles

Certificate of Merit for Energy Conservation, Bureau of Energy Efficiency, Ministry of Power A Recognition for the efficient use of energy and its conservation.

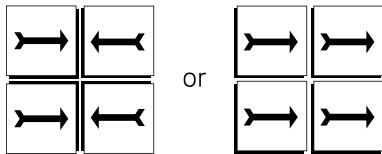
Plant has received Safety award by National Safety Council

GreenPro is a product certification given by the Confederation of Indian Industry (CII) which signifies environmentally conscious life cycle of the production; certification for eco-friendly products that helps customers make an informed choice towards sustainable products.

Griha
Griha council is a joint initiative of Ministry of New and Renewable Energy, GOI and The Energy and Resources Institute of implement Griha. India's national rating system for sustainable habitats

Porselano Tile Fixing Instruction

1. Plaster the surface of the floor where the tiles will be laid with smooth finish and complete the plastering and curing at least two weeks prior to laying.
2. Before fixing Porselano tiles lay them out in the desired pattern and make sure that they give an acceptable blend of shade, colour and design. Please note that certain amount of shade and size variation is inherent in the manufacture of vitrified ceramic tiles. Certain products will have intentional shade or colour variation to get the natural and elegant look, which is an integral element of the design resembling naturally created veins or shaded effect.
3. The company bears no responsibility towards the tiles exposed to any outside process like transfers, printing, firing etc.
4. For fixing Porselano, we recommend using an appropriate product from the range of tile fixing adhesives from the ARDEX ENDURA (INDIA) PVT. LTD. Please follow the adhesive manufacturer's recommendations and instructions for best results.
5. For fixing Porselano tiles on the floor, using sand and cement, follow the instructions given below:
 - a) Use cement and sand mortar in the ratio of 1:4. Add some water to create a consistent paste.
 - b) Once the mixing has been completed do not add any further water and use the same within one hour.
 - c) Apply a 20-30 mm layer of bedding material over an area of 1 square meter at a time on the surface of the area. Apply a fine slurry to the back of the tile to ensure proper and full bedding. Press gently for even adherence at the back of the tile. **DO NOT USE AN IRON HAMMER OR SOME HEAVY MATERIAL TO PRESS THE TILE.**
6. For fixing Porselano tiles on Wall / Dado, we recommend using an appropriate product from the range of tile fixing adhesives from the ARDEX ENDURA (INDIA) PVT. LTD. with proper troweling method for 100 per cent coverage behind the tiles and for peerless bonding. Please follow the adhesive manufacturer's recommendations and instructions for best results. We do not recommend the use of sand and cement for fixing on Dado.
7. Mark and lay out the tiles from the center of the area to be laid so that cut tiles, if any, will be on the outer edges towards the walls.
8. The work size which we try to maintain for better technical performance is 60 cm x 60 cm on average. For large format tiles we do not recommend tiles to be laid without a gap. Plastic tile spacers can be used at each tile corner to maintain even grout lines between the tiles. It is advisable to maintain a gap of 2 mm to 6 mm between every tile to allow for possible expansion as per ISO tolerance norms.
9. Complete the laying process by pressing the cut Porselano tiles firmly into place along the walls/floors.
10. Allow 3-4 days for bed curing. After this period fill the joints with cementitious or epoxy grouts from ARDEX ENDURA (INDIA) PVT. LTD. Use of grout sealant is recommended for keeping the grout free of dust.
11. Fifteen minutes after finishing the grouting process, wipe off excess grout with a damp sponge and polish the tiles with a soft and dry cloth for a clean surface. The tiles can also be cleaned with a mild acid (However, Hydrofluoric acid and its derivatives should not be used). You can also use tile & stone cleaners from ARDEX ENDURA (INDIA) PVT. LTD.
12. Please note that the company does not accept any liability in case of problems arising out of non-adherence to these fixing instructions.
13. **THE COMPANY WILL BEAR NO RESPONSIBILITY AFTER THE TILES ARE FIXED.**
14. Kindly look for an arrow (➡) on the back of the tile and follow the laying pattern as shown in Pic-1 :-



NOTHING IN THESE INSTRUCTION IS A SUBSTITUTE FOR GOOD WORKMANSHIP AND SUPERVISION

TECHNICAL SPECIFICATIONS

S. No	Property	International Standard ISO 13006 / EN 14411 Group Bla Requirement	Indian Standard IS 15622:2017 Group Bla Requirement	Johnson Porselano Value (Matt)	Johnson Porselano Value (Polished)	Test Method
	Dimensions & Surface Quality	whichever is less applicable. Rectified edge	Rectified edge			
1	Deviation in Length & Width	± 0.3% or ±1.0mm	± 0.1 %	± 0.1%	± 0.1%	ISO 10545-2 / IS 13630-1
2	Deviation in Thickness	± 5% or ± 0.5mm	± 5 %	± 4%	± 4%	ISO 10545-2 / IS 13630-1
3	Straightness of Sides	± 0.3% or ±0.8mm	± 0.1 %	± 0.1%	± 0.1%	ISO 10545-2 / IS 13630-1
4	Rectangularity	± 0.3% or ±1.5mm	± 0.1 %	± 0.1%	± 0.1%	ISO 10545-2 / IS 13630-1
5	Surface Flatness	± 0.4% or ±1.8mm	± 0. 5 %	± 0.2%	± 0.2%	ISO 10545-2 / IS 13630-1
6	Surface Quality	Min 95% free from visible defects	Min 95% free from visible defects	>95% free from visible defects	>95% free from visible defects	ISO 10545-2 / IS 13630-1
	Physical Property					
7	Water Absorption	≤ 0.5% individual Max 0.6%.	Average ≤0.08%, Individual 0.1%, Max	≤ 0.05%	≤ 0.05%	ISO 10545-3/ IS 13630- 2
8	Modulus of Rupture	≥ 35 N/mm ² Individual 32N/mm ² , Min	Average 35 N/mm ² Individual 32N/mm ² , Min	≥ 38 N/mm ²	≥ 38 N/mm ²	ISO 10545-4/ IS 13630-6
9	Breaking Strength	700 N Min for thickness < 7.5 mm, 1300 Min for thickness ≥7.5 mm	700 N Min for thickness <7.5 mm, 1300 Min for thickness ≥7.5 mm	≥ 1500 N	≥ 1500 N	ISO 10545-4 / IS 13630-6
10	Moisture expansion	Report value	0.02 mm/m, Max	≤ 0.02 mm/m	≤ 0.02 mm/m	ISO 10545-10 / IS 13630-3
11	Scratch hardness of surface (Moh's scale)	Not Required	5, Min	≥ 6 (Matt surface)	≥ 5 (Polished surface)	IS 13630 -13
12	Resistance to Surface Abrasion of Glazed Tiles for Floor Application	report abrasion class & Cycle passed	Class II , Min	PEI III-V	PEI II- III	ISO 10545-7 /IS 13630 -11
13	Coefficient of Linear Thermal Expansion	Report value	Max, 6 x 10 ⁻⁶ K ⁻¹	≤ 6 x 10 ⁻⁶ K ⁻¹	≤ 6 x 10 ⁻⁶ K ⁻¹	ISO 10545-8/IS 13630-4
14	Thermal Shock Resistance	Report result	10 cycles Min	No Damage	No damage	ISO 10545-9 / IS 13630 -5
15	Crazing Resistance of Glazed Tiles	Report result	4 cycles @7.5 bar Min	No Damage	No Damage	ISO 10545-11/ IS 13630-9
16	Impact Resistance	Report value	0.55, Min	≥ 0.55	≥ 0.55	ISO 10545-5 / IS 13630-14
17	Slip Resistance for Floor Application	Report value	Manufacturer to declare	≥ 0.45	≥ 0.4	ANSI B101.3
18	Frost Resistance	Report result	Required if requested by purchaser	No damage	No Damage	ISO 10545-12 / IS 13630-10
19	Bulk Density (g/cc)	Report value	2.2, Min	≥ 2.2	≥ 2.2	ASTM C373-16 / IS 13630-2
20	Color Resistance to UV light	Report result	-	No change in color	No change in color	DIN 51094
21	Chemical Property (cleansers except to cleansing agents containing Hydrofloric acids and its compounds)					
a	Resistance to Staining - Glazed Tiles	Min Class 3	Class I, Min	Class 3 (ISO) / Class I(BIS)	Class 3 (ISO) / Class I(BIS)	ISO 10545-14 / IS 13630-8
b	Resistance to Household Chemicals and Swimming Pool water cleansers - Glazed tiles	GB	AA Min	GA/AA	GA/AA	ISO 10545-13 / IS 13630-8
c	Resistance to acids and alkalis (glazed Tiles)	Report resistance class	Report resistance class	GA	GA	ISO 10545-13 /IS 13630 -8
22	Lead & Cadmium Release- for Glazed Tiles, where required	Report value	-	Nil	Nil	ISO 10545-15

* ISO / IS technical specifications for Johnson tiles are applicable only for premium /1st Quality tile
Please inspect all tiles prior to installation, company will not entertain any complaints once tiles are laid / fixed

PACKING DETAILS

Product	Nominal Size (cm)	No of Tiles / Box	Approx Area / Box (sq m)	Approx Weight / Box (kgs)	Approx Cartons / 20' Container	Approx Area Per Container (sq m)
Porselano 80x160	80x160	2	2.56	51.00	529	1354
Porselano 60x120	60X120	2	1.44	27.5	981	1413
Porselano 60x60	60X60	4	1.44	26.5	1018	1466

YOU CAN ALSO REACH US AT



Region	Branch	Tel.:
East	Kolkata	033-46021880
	Bhubaneshwar	0674 6539836/37/2430240
	Siliguri	9836065812
	Guwahati	8135846661/7575900492
	Ranchi	7564902802
West	Mumbai	022-40647500
	Thane	022-25867600 / 666
	Pune	020-41301164 / 31
	Aurangabad	8669600748
	Ahmedabad	079-48480010
	Raipur	0771-4919129
	Indore	0731-4007441
North	Jalandhar	0182-4505038 / 39
	Chandigarh	0172-4697100
	Delhi	011-49526600

Region	Branch	Tel.:
North	Jaipur	0141-2368329
	Lucknow	0522-2721699
	Varanasi	0542-2222620
	Patna	7762084542
South	Bengalure	080-22234310/080-22234330
	Hyderabad	040-29802270 / 71 / 72
	Vijayawada	9666429666
	Vishakhapatnam	0891-2796376
	Tirupati	9121228960
	Kochi	0484-4871277
	Kozhikode	0422-4382698
	Thiruvananthapuram	0471-2720141
	Chennai	044-28544116 / 28541881
	Coimbatore	0422-4382698
	Madurai	0452-4355584 / 4355594
	Trichy	9486718544

EXPERIENCE CENTERS

Location	Address	Tel.:
Kolkatta	HOUSE OF JOHNSON - 83 JBS Haldane Avenue, TOPSIA Trinity towers Kolkata - 700046	033-46021880
Guwahati	HOUSE OF JOHNSON - 1st Floor, Above Royal Riders Honda, Near Rahul Kata, Pub Bragaon, Garchuk, Guwahati - 781035	7575900492
Bhubaneshwar	HOUSE OF JOHNSON - Ray Tower, 1st Floor, N4/237, Indradhanu market, IRC Village, Nayapalli, Bhubaneshwar, Orissa - 751015	0674 6539836/37/2430240
Patna	HOUSE OF JOHNSON – SK Builders and colonizer Pvt.Ltd.,1st Floor, SK Palace, Saguna more, Bihar – 801503.	9702651243
Chandigarh	HOUSE OF JOHNSON - SCO 214, sector14, Panchkula, Haryana - 134109	0172-4637724
Delhi	HOUSE OF JOHNSON - First & Mezzanine Floor, B-1/G-3, Mohan Industrial Estate, Mathura Road, New Delhi - 110094.	11-49526600
Lucknow	HOUSE OF JOHNSON - 1st Floor, Prithvi Ratan Height,Plot No CP-4, Vijayant khand - 3, Comtinagar Joyna, Lucknow - 226028	0522-2721699
Varanasi	HOUSE OF JOHNSON - Ashakunj, 1st floor, D59/103 D4, Opp Siddharth Complex, Sigra Mehmoorganj Road, Varanasi - 221010	0542-2222620
Aurangabad	House Of Johnson Aurangabad - Cut No 16/44, NH-211, Near Balapur Phata, Near Ramkisan Lawns, Beed Bypass Road Aurangabad 431005	8669600748
Pune	HOUSE OF JOHNSON - Sable House, Poona Snuff Factory, Sr. No 11A, Plot 408/4/5, Satara Road, Gultekadi, Pune - 411037	7350009364
Thane	HOUSE OF JOHNSON - Shop No.5, Gr.Floor, Cosmos Jewels, Near Dmart, Anand Nagar, Ghodbunder Road, Thane West - 400615	8424003247
Mumbai - Andheri	HOUSE OF JOHNSON - 1st flr, Bonanza, Sahar Plaza, Nr Hotel Kohinoor continental, J B Nagar, Andheri Kurla Road, Andheri East, Mumbai - 400059	8108030975
Ahmedabad	HOUSE OF JOHNSON - F 106-107, Shivalik Plaza, IIM Road, Panjrapole Cross Road, Ahmedabad, Gujarat - 380015	079-48480010
Indore	HOUSE OF JOHNSON - Shop No 5, 6, 7 and 8, Upper Ground Floor, Exotica, Shalimar Township, Village Niranjapur, A. B. Road, Indore, Madhya Pradesh - 452001	0731-4007441
Raipur	HOUSE OF JOHNSON - 2nd Floor, MM Silver Plaza, Opp Udyog Bhawan, Ring Road - 1, Raipur, Chattisgarh - 492001	771-4919129
Coimbatore	HOUSE OF JOHNSON - Elysium Towers, Park Gate Rd, No. 21, ATT Colony, Gopalapuram, Coimbatore - 641018	0422-4382698
Chennai	HOUSE OF JOHNSON - 82, 84 & 86 Bascon Maeru, 1st floor, Kodambakkam High Road, Nungambakkam, Chennai - 600034	044-48611632
Kochi	HOUSE OF JOHNSON - Door no. 11/300 f, Next to VTJ Hyundai, NH 47 Kundanoor, Maradu, Kochi, Ernakulam - 682304	0484-4871277
Kozhikode	HOUSE OF JOHNSON - Tilal Tower, Near Nexa Showroom, Kudilthod, Malaparamba bypass, Kozikode, Kerala - 673017	0495-2357505
Thiruvananthapuram	HOUSE OF JOHNSON -1st Floor, Sreedhanya Apex, TC 22/3720 (4) Vellayambalam, Sasthamangalam PO, Thiruvananthapuram, Kerala - 695010	0471-2720141
Bengalure	HOUSE OF JOHNSON - No.39, Rajaram Mohan Roy Road , Opp. Kanteerava indoor Stadium, Bengalure - 560027	080-22234310/080-22234330
Bengalure	HOUSE OF JOHNSON - Doddabanaswadi, Opp. New Baldwin Residential School, Bengalure-560043	080-41692976 / 41692060
Hyderabad	HOUSE OF JOHNSON - SP Jubilee Crown (3rd Floor) Plot - 1270, Road No.36, Jubilee Hills, Hyderabad – 500033	8897525143

For address and contact numbers of our Johnson Exclusive Showrooms and Authorized Retailers, please visit our website www.hrjindia.com



Toll Free No.: 1800-210-7484

WhatsApp No.: +91 84510 57484

Email: tiles.customercare@prismjohnson.in

For Export Enquires, Email:

exports.customercare@prismjohnson.in

PRISM JOHNSON LIMITED

H & R JOHNSON (INDIA) DIVISION

Corporate Office:

7th Floor, Windsor, C. S. T. Road, Kalina,
Santacruz (East), Mumbai - 400 098, India.

Tel: +91-22-40647300

Website: www.hrjohnsonindia.com

Registered Office: 305, Laxmi Niwas Apartments, Ameerpet
Hyderabad - 500016, Telangana, India.

Download App



Download E-Catalogue



HRJIndia



@hrjohnsonofficial



Hrjohnsonindia



hrjohnson_india



h-&-r-johnson-india-prism-johnson-limited



HRJohnsonIndia1