

# PE CABINETS



## Standard

- Comply with ANSI/EIA RS-310-D  
IEC60297-2、DIN41494; PART1;  
DIN41494; PART7.

## Material

- SPCC Cold Rolled Steel;
- 19" rails: 2.0mm, others: 1.2mm.

## Colour

- PE ■■■■■■ 0 ■■■:RAL7035.
- PE ■■■■■■ 1 ■■■:RAL9004.

## Loading Capacity

- Static loading:800KG.

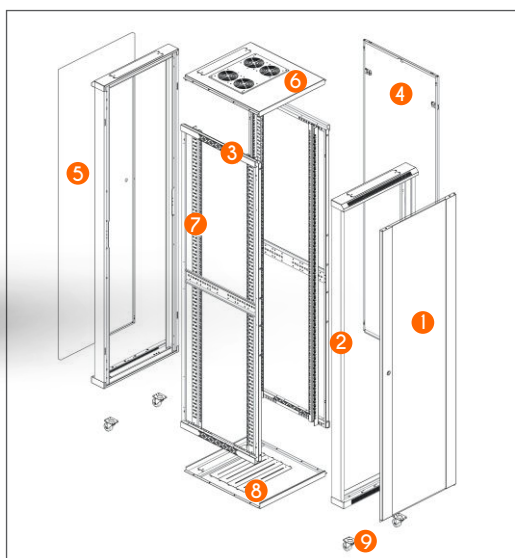
# CABINET

## PE NETWORK CABINETS



### Feature

- Flat packing and patent frame, packing time is less than 20 minutes;
- Exquisite design with precise dimension and craftsmanship;
- Several styles of front and rear door options available;
- Adjustable feet and heavy duty castors are available simultaneously;
- Cable entry on the top cover and bottom panel with adjustable sizes ;
- Optional installation of plinth to enable cabinets fixation, under-base cable entry/ventilation;
- Efficient and reliable cabinet connection by baying kit;
- Removable side panels to ease maintain;



### Main Part

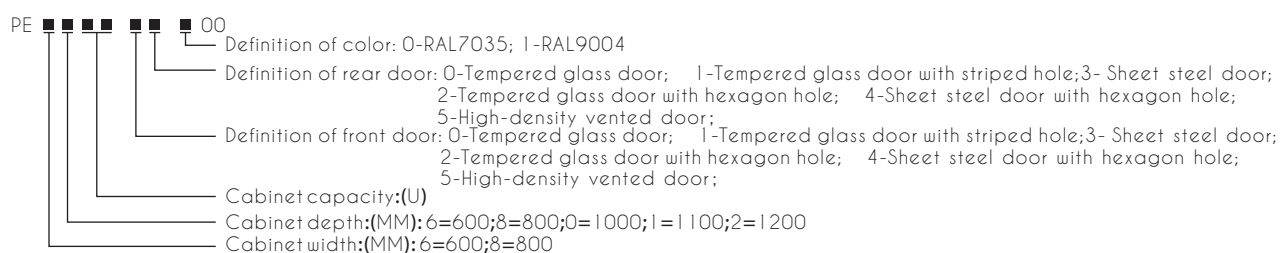
S/N	Specification	Qty	Material	Surface Finish	Remark
1	Front door	1	----	Powder coated	
2	Frame	2	SPCC t1.2	Powder coated	----
3	Side frame	2	SPCC t1.2	Powder coated	----
4	Side panel	2	SPCC t1.2	Powder coated	≥ 1000 width cabinets need 4 panels
5	Rear door	1	----	Powder coated	
6	Top cover	1	SPCC t1.2	Powder coated	----
7	19" rails	4	SPCC t2.0	Powder coated	----
8	Bottom	1	SPCC t1.2	Powder coated	----
9	2" heavy duty castor	4	----	----	----
A	M12 adjustable feet	4	----	v	----
B	M6 screw& nuts	20	Steel	Color zinc	40pcs for over 33U
C	Trox tooling	1	Steel	Color zinc	----

The 600mm width cabinet can be changed to the 800mm width one, only need to put the connecting panel and 2 cable management slots. Support 19" EIA equipment.

# CABINET

## PE NETWORK CABINETS

### Definition Of Code



### Ordering Information

Part Number.	Width (mm)	Depth(D)(mm)	Capacity ( U )	Height(H)(mm)	CKD packing parts
PE.6615. ■ ■ ■ ■ 00	600	600	15	800	3
PE.6620. ■ ■ ■ ■ 00			20	1000	
PE.6624. ■ ■ ■ ■ 00			24	1200	
PE.6629. ■ ■ ■ ■ 00			29	1400	
PE.6633. ■ ■ ■ ■ 00			33	1600	
PE.6638. ■ ■ ■ ■ 00			38	1800	
PE.6642. ■ ■ ■ ■ 00			42	2000	
PE.6647. ■ ■ ■ ■ 00			47	2200	
PE.6815. ■ ■ ■ ■ 00		800	15	800	
PE.6820. ■ ■ ■ ■ 00			20	1000	
PE.6824. ■ ■ ■ ■ 00			24	1200	
PE.6829. ■ ■ ■ ■ 00			29	1400	
PE.6833. ■ ■ ■ ■ 00			33	1600	
PE.6838. ■ ■ ■ ■ 00			38	1800	
PE.6842. ■ ■ ■ ■ 00			42	2000	
PE.6847. ■ ■ ■ ■ 00			47	2200	
PE.6938. ■ ■ ■ ■ 00		900	38	1800	3
PE.6942. ■ ■ ■ ■ 00			42	2000	
PE.6947. ■ ■ ■ ■ 00			47	2200	
PE.6038. ■ ■ ■ ■ 00		1000	38	1800	
PE.6042. ■ ■ ■ ■ 00			42	2000	
PE.6047. ■ ■ ■ ■ 00			47	2200	
PE.8638. ■ ■ ■ ■ 00	800	600	38	1800	4
PE.8642. ■ ■ ■ ■ 00			42	2000	
PE.8647. ■ ■ ■ ■ 00			47	2200	
PE.8838. ■ ■ ■ ■ 00		800	38	1800	
PE.8842. ■ ■ ■ ■ 00			42	2000	
PE.8847. ■ ■ ■ ■ 00			47	2200	
PE.8938. ■ ■ ■ ■ 00		900	38	1800	
PE.8942. ■ ■ ■ ■ 00			42	2000	
PE.8947. ■ ■ ■ ■ 00			47	2200	
PE.8038. ■ ■ ■ ■ 00		1000	38	1800	
PE.8042. ■ ■ ■ ■ 00			42	2000	
PE.8047. ■ ■ ■ ■ 00			47	2200	

Packing dimensions: Carton width=cabinet width+40mm, Carton depth=cabinet depth+40mm, Carton height=cabinet height+90mm

# CABINET

## PE NETWORK CABINETS



- Front & rear door (type 0)  
Tempered glass door.  
Small lock;  
Reversible right or left handed doors;  
Turning angle is over 180 degrees;
- Material:  
Sheet steel  
5MM safety glass
- Surface Finish: Powder coated
- Color: RAL7035;RAL9004



- Front & rear door (type 1)  
Tempered glass door with striped hole.  
Gray decoration bar;  
Small lock;  
Reversible right or left handed doors;  
Turning angle is over 180 degrees;
- Material:  
Sheet steel  
5MM safety glass
- Surface Finish: Powder coated
- Color: RAL7035; RAL9004



- Front & rear door (type 2)  
Tempered glass door with net hole.  
Gray decoration bar;  
Lock with comfort handle;  
Reversible right or left handed doors;  
Turning angle is over 180 degrees;
- Material:  
Sheet steel  
5MM safety glass
- Surface Finish: Powder coated
- Color: RAL7035; RAL9004



- Front & rear door (type 3)  
Sheet steel door.  
Small lock;  
Reversible right or left handed doors;  
Turning angle is over 180 degrees;
- Material:  
Sheet steel
- Surface Finish: Powder coated
- Color: RAL7035; RAL9004



- Front & rear door (type 4)  
Sheet steel door with hexagon hole.  
Small lock;  
Reversible right or left handed doors;  
Turning angle is over 180 degrees;
- Material:  
Sheet steel
- Surface Finish: Powder coated
- Color: RAL7035; RAL9004



- Front & rear door (type 5)  
High-density vented door;  
Slotted surface (SW7 hexagon) Air inlet opening>60%;  
Lock with comfort handle;  
Reversible right or left handed doors;  
Turning angle is over 180 degrees;
- Material:Sheet steel
- Surface Finish: Powder coated
- Color: RAL7035; RAL9004

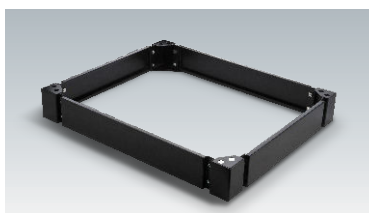
# CABINET

## PE NETWORK CABINETS

May Installs The Fitting



Shelf



Plinth



Fan units



M6 Screws & nuts

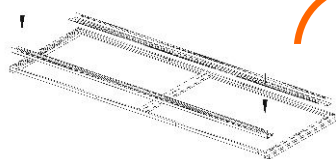


PDU

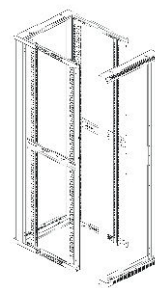
### Assembling Draft

Attention

Please remove front/back door and side plane from the frame prior to unpacking



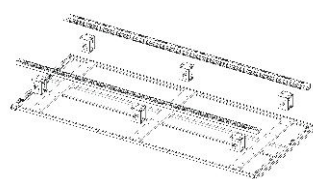
1A. Assemble mounting rail(only width 600mm). (Screw M6x12 & nuts).



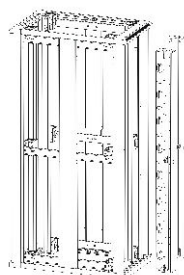
2A. Assemble frame(only width 600mm). (Screw M6x12 & nuts).



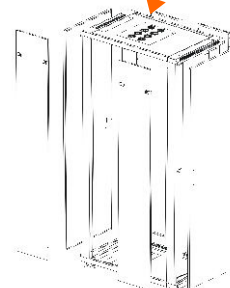
3. Assemble top cover, bottom panel, adjustable feet, castor(screw M5x10).



1B. Assemble mounting rail and spacer (only width 800mm). (Screw M6x12 & nuts).



2B. Assemble frame, cable management slot(only width 800mm). (screw M5x10).



4. Assemble front/rear door and side panel.