

CABINETS FITTING PDU

PDU



- Interface Compatibility : the world modulation standard power outlet hole module, States could satisfy the different needs of customers with more output jacks and IEC output socket. apply to different countries import the equipment plugs. (Inter plugs vary from the standard, before buying Please check)
- Achieve double-importation, IEC socket input, Product front panel input, rear imported products, imported products end form.
- With a variety of specifications GB, the British superscript, subscript Germany, the United States superscript, subscript India.
- Optional 10A, 16A and industrial couplings, and other specifications for the plug. Rackable installation of international standards: easy installation in standard 19-inch cabinets, racks, the only occupies 1U of rack space, Installation support level (standard 19-inch), the installation of the vertical (parallel with the Cabinet column installation), is also applicable to other occasions.
- Convenient and reliable performance of the installation: 19-inch standardized design, installation is very simple. At least only two screws, PDU can be firmly fixed. Users may need to adjust products PDU installation of 180 degrees; coupled with a magnitude of L-plate bend can be achieved PDU products adjustment 90 degrees installation.
- Multiple circuit protection function lightning and surge protection : The biggest impact resistance Electricity : 20KA or higher; Limit voltage : $\leq 500V$ or less; Lightning Protection, through professional testing centers detection, Fine-used equipment Surge Protection police protection : Current LED digital display and alarm functions with current monitoring of the entire process of filtering protection : protection with sophisticated filtering, ultra-stable output power of pure overload protection : bipolar provide overload protection, can effectively prevent overload generated by the issue.
- Misoperation: PDU dominated switch ON / OFF gate with protection to prevent the closure of the accident, while providing the option of a two-way.



Input connector type



Plug style	IEC60329
Parameter	16/32A 250VAC



Plug style	IEC320 C14(C20)
Parameter	10(16A) 250VAC



Plug style	Bs1363
Parameter	13A 250VAC



Plug style	AS/NZS 3112
Parameter	10/15A 250VAC



Plug style	DIN49441
Parameter	16A 250VAC



Plug style	NEMA 5-15P
Parameter	15A 125VAC

CABINETS FITTING

PDU

Output unit type



Style	AS/NZS 3112
Parameter	10(15A) 250VAC



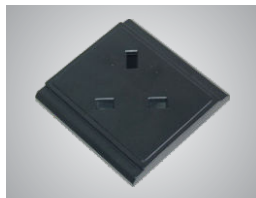
Style	DIN49440
Parameter	16A 250VAC



Style	IEC320 C13(C19)
Parameter	10(16A) 250VAC



Style	BS1363(90°)
Parameter	13A 250VAC



Style	BS1363(45°)
Parameter	13A 250VAC



Style	NEMA 5-15R
Parameter	15A 150VAC

Input connector type



Name	Master switch
------	---------------



Name	Master overload Protector & power indicator
------	---



Parameter	Mini circuit breaker(1~60A)
-----------	-----------------------------



Code	LY-A
Name	Protective device



Code	LY-B
Name	Protective device

Surge protective device

TUL-LY-A/B	Parameter
Rated voltage	250VAC 50/60Hz
Rated load current IR	16A
Max. power P _{MAX}	4000W
Max. Continuous operating voltage UC	320VAC
Measured limiting voltage U _r	<1000V
Nominal discharge current(8/20μs)I _n	10KA
Voltage protection level U _p	<1000V
Response time T _A	<25nS
Protection mode	L-N L-PE N-PE
Earth indicator	Yellow LED
Lightning protection	Green LED
Power indicator	Red LED
Alternative filtration	Highly efficient
Insulation resistance RIS	>100MΩ
Fire resistance	Up to UL 94V-0
Environment temperature	-40~+70°C
Relative humidity	<=95%

Surge protective device:LY-B



- Red LED light, when working, means the Power had Unicom and filtering output.
- Green LED light, when disabled, means the failure of the lightning protection circuit.
- Yellow LED light, when working, means the absence of earth wire of the power supply system, which shall be case to contact electrician for his professional and grounding.