

# EW WALL BOX

## Compliance

- Comply with ANSI/EIA RS-310-D、IEC60297-2、DIN41494;
- PART I ; DIN41494;PART7

## Material

- SPCC Cold Rolled Steel ;
- Thickness : Mounting profile: 1.5mm,others: 1.0mm

## Colour

- EW.■■■■O■■:RAL7035
- EW.■■■■I■■:RAL7021

## Loading Capacity

- Static loading: 30KG
- Protection category:lp20

## Finish

- Pretreated steel coated with textured , polyester powder paint

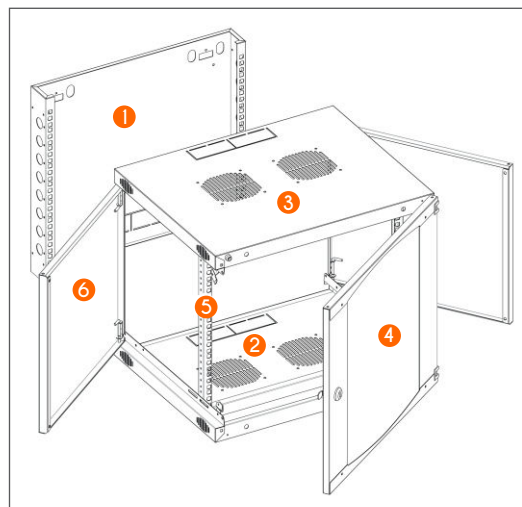


# WALL BOX

## EW PAPID SINGLE SECTION

### Feature

- Knocked down and smaller packaging, easy to transport and carry.
- Front and rear frame of specially-made structure, better stability.
- Using 13 screw set to assembly the whole cabinet, it spends only 10mins by one people to operate.
- It has a pilot pin to help close the front door to avoid mismatch, and the front door can be changed to another way to open.
- The cable can be entered from top, bottom, back of the cabinet, suitable to every situation. The incoming cable hole patented, it can be adjusted, and has the round edge to avoid the cutting to the cable.
- Side panel can be opening in rotated way or disassembling, having a space enough to wiring, the side panel can be locked safely from inside without the locker and key.
- Maximum bearing capacity: 30KG.



### Main Part

| S/N | Specification   | Qty | Material                          | Surface Finish | Remark     |
|-----|-----------------|-----|-----------------------------------|----------------|------------|
| 1   | Back frame      | 1   | SPCC ±1.0                         | Powder coated  | ----       |
| 2   | Bottom          | 1   | SPCC ±1.0                         | Powder coated  | ----       |
| 3   | Top cover       | 1   | SPCC ±1.0                         | Powder coated  | ----       |
| 4   | Front door      | 1   | 4MM toughed glass door/ SPCC ±1.2 | Powder coated  | Small lock |
| 5   | 19" rails frame | 1   | SPCC ±1.5                         | Powder coated  | ----       |
| 6   | Side panel      | 2   | SPCC ±1.0                         | Powder coated  | ----       |

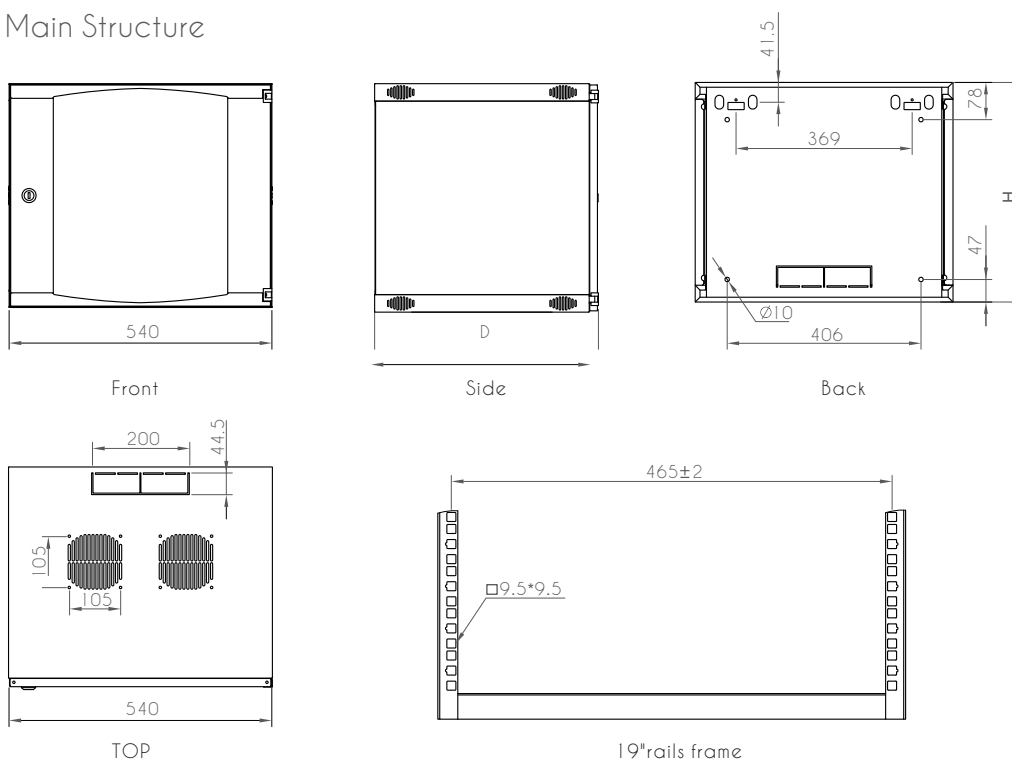
### Ordering Information

| Model No.    | Capacity (U) | Width (mm) | Depth(D) (mm) | Height(H) (mm) | Disassembled packing dimension(MM) | Assembled packing dimension(MM) |
|--------------|--------------|------------|---------------|----------------|------------------------------------|---------------------------------|
| EW.5406. ■00 | 6            | 540        | 450           | 327            | 570*215*485                        | 550*460*340                     |
| EW.5606. ■00 |              |            | 600           |                | 570*165*635                        | 550*610*340                     |
| EW.5409. ■00 | 9            | 540        | 450           | 460            | 500*215*590                        | 550*460*470                     |
| EW.5609. ■00 |              |            | 600           |                | 590*205*615                        | 550*610*470                     |
| EW.5412. ■00 | 12           | 540        | 450           | 593            | 570*205*655                        | 550*460*605                     |
| EW.5612. ■00 |              |            | 600           |                | 590*205*635                        | 550*610*605                     |
| EW.5415. ■00 | 15           | 540        | 450           | 725            | 570*205*790                        | 550*460*740                     |
| EW.5615. ■00 |              |            | 600           |                | 630*205*745                        | 550*610*740                     |

# WALL BOX

## EW PAPID SINGLE SECTION

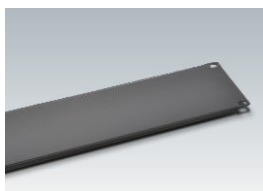
### Main Structure



### May Installs the fitting



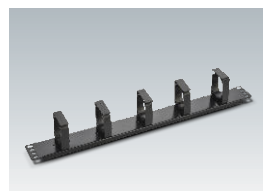
Cooling fan



Blanking panel



Cantilever shelf



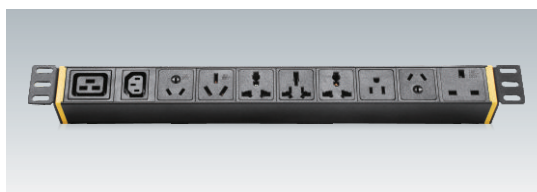
Cable management



M6 Screws &amp; nuts



Earthing kit



PDU