



*Collaborating and working on a global scale*

**An overview of our works**  
**Office | Residential | Retail**

**2010 - 2025**



[www.beplan.pl](http://www.beplan.pl)

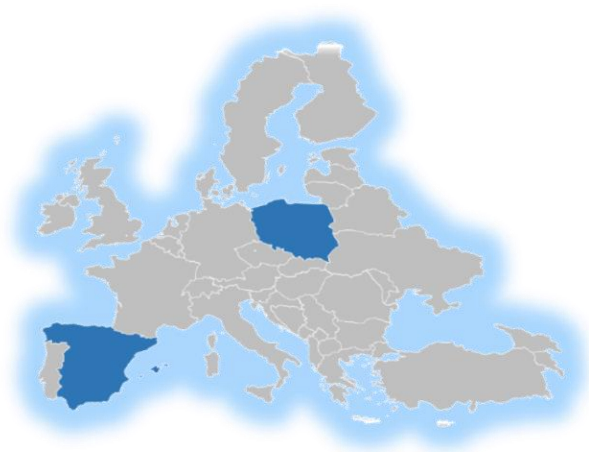


# About Us

## BEPLAN Design + Build

is a design and construction company, with over 15 years of experience. We collaborate with companies to **define, design, and build** refurbishment and renovation projects for offices, retail and leisure creating inspiring and attractive spaces.

We are a **global company** based in **Poland and Spain**, carrying out projects throughout Europe and Middle East.



# Our Services

*Depending on the needs of each client, we operate in three business areas, offering our services:*



Concept Design and Execution Project



Project Management / Global Real Estate Consultancy for companies with headquarters abroad.



Building and Fit Out



## Office and CoWorking

We apply all our experience in office interior design to transform your workspace into a place that not only looks better but also functions more efficiently.



## Retail and Hospitality

We create environments that sell, spaces that communicate, and experiences that captivate, designed to attract, retain, and build customer loyalty. Good design isn't just seen, it's experienced.



## Residential Design

Every detail counts: environments that inspire and captivate. We create interiors where comfort and elegance meet. Functional and aesthetic designs, conceived for living and enjoying.

# Our approach to design

## ECOLOGY

Our team prioritizes the greenest approach possible by recommending sustainable materials and technological solutions.

## ACCOUSTICS

Creating Exceptional Acoustic Environments. With our extensive experience, we design and optimize top-tier acoustic environments



## ESG

Our workspace designs align with ESG goals, fostering diversity, inclusion, and sustainability.

## TECHNOLOGY

Our designs seamlessly integrate cutting-edge technology to enhance user experience and efficiency.



# Our Clients



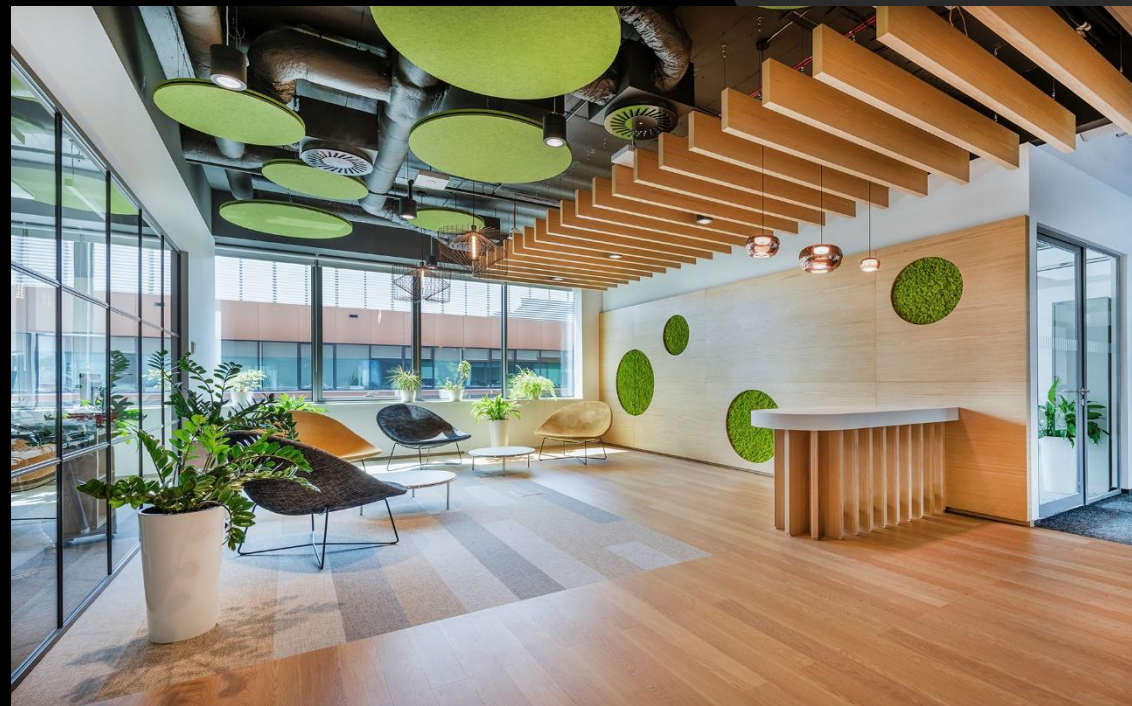
# Office Projects

## Project list:

- Transporeon
- Carl Zeiss, Poznan
- IWG CoWorking
- Groupon
- WeWork Bacardi
- mBank Headquarters
- Carl Zeiss Warsaw
- Sabio Lawyers
- Bloober Software
- Lilly Laboratories
- Carl Zeiss Paris

We make your vision a reality  
Transform your office into an innovative and collaborative workspace.





**TRANSPOREON**  
A Trimble Company

# Transporeon Headquarters

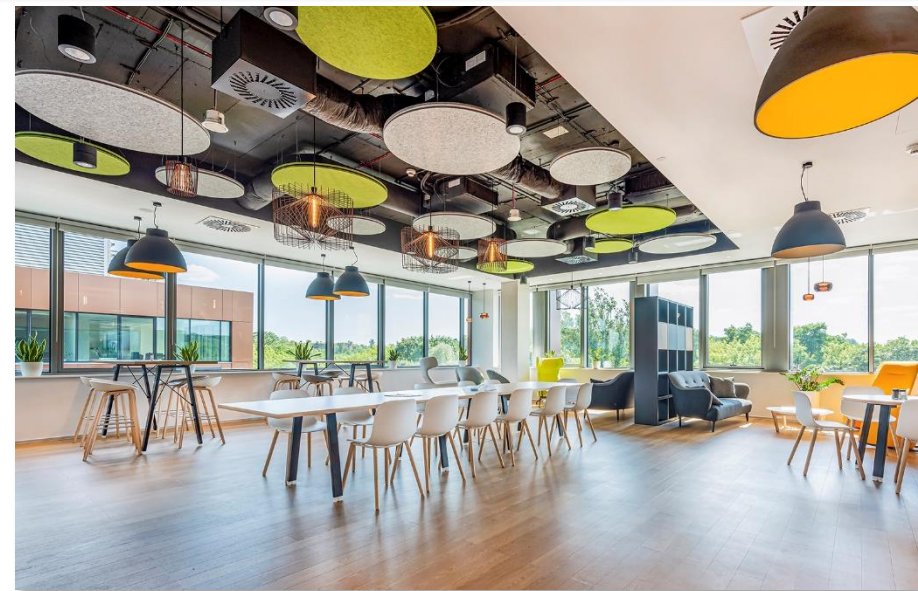
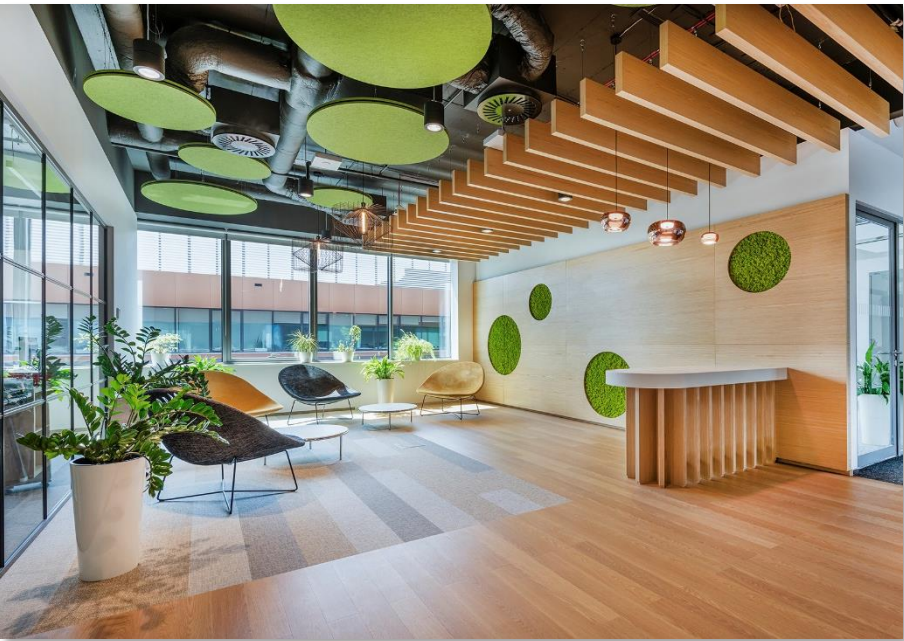
2.000m<sup>2</sup>

Adaptation to Collaborative Work

During the renovation, Transporeon adapted its offices to encourage teamwork and collaboration between departments.

Functional meeting areas, coworking spaces, and private offices were created, addressing the diverse needs of employees.

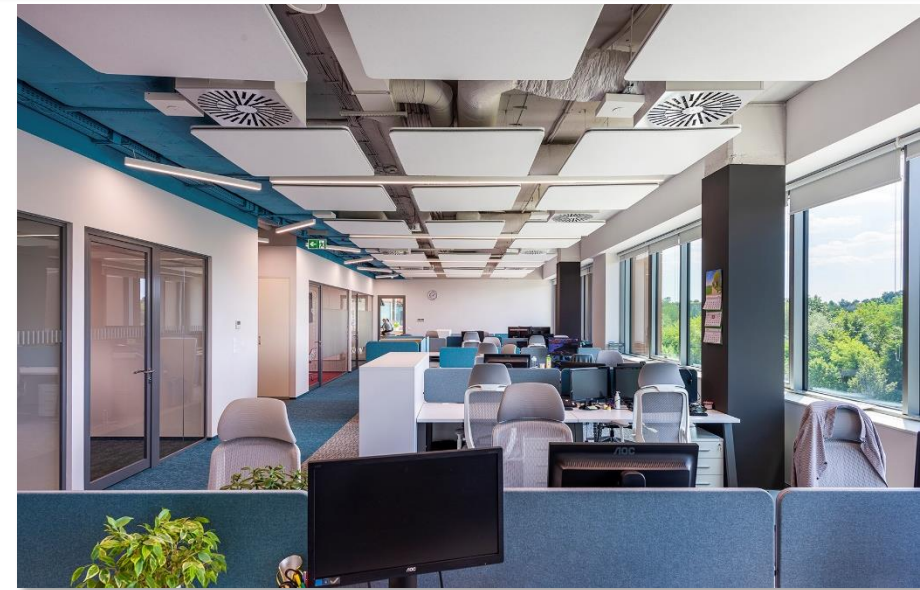














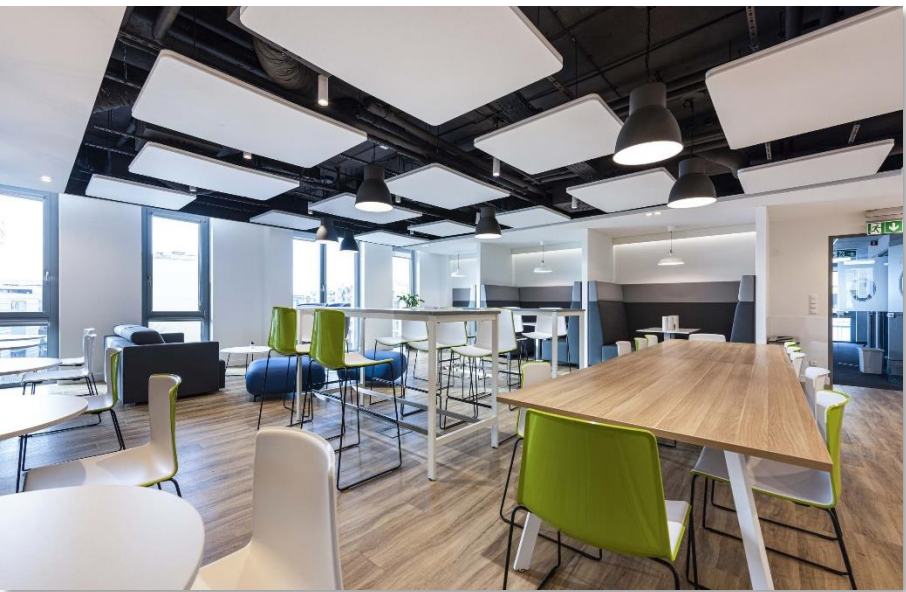


# Carl Zeiss Headquarters

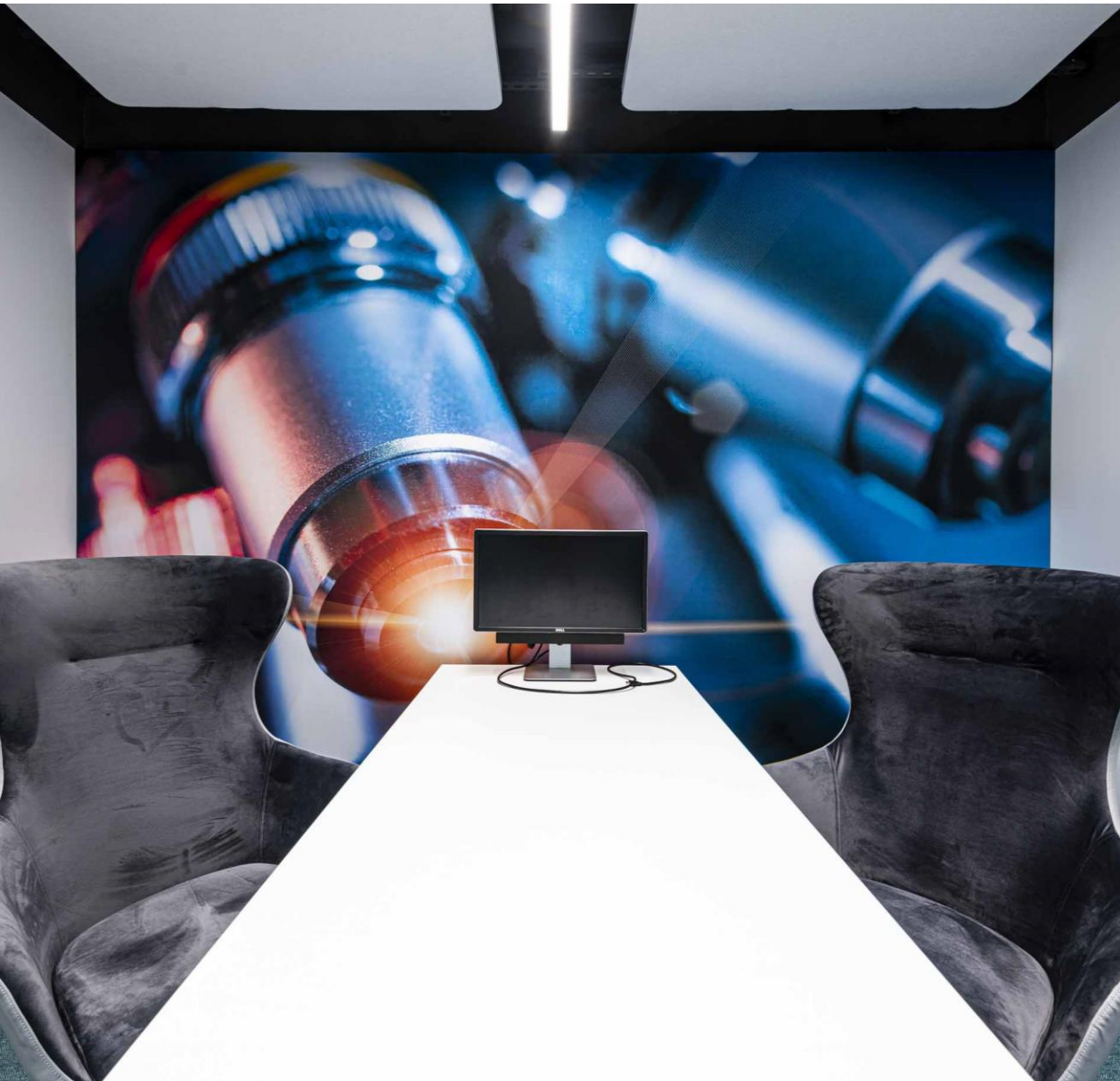
1.000m<sup>2</sup>

Design and construction of corporate offices for Carl Zeiss AG. Working with its Global Real Estate Manager, we designed its offices in Poznań, Poland.

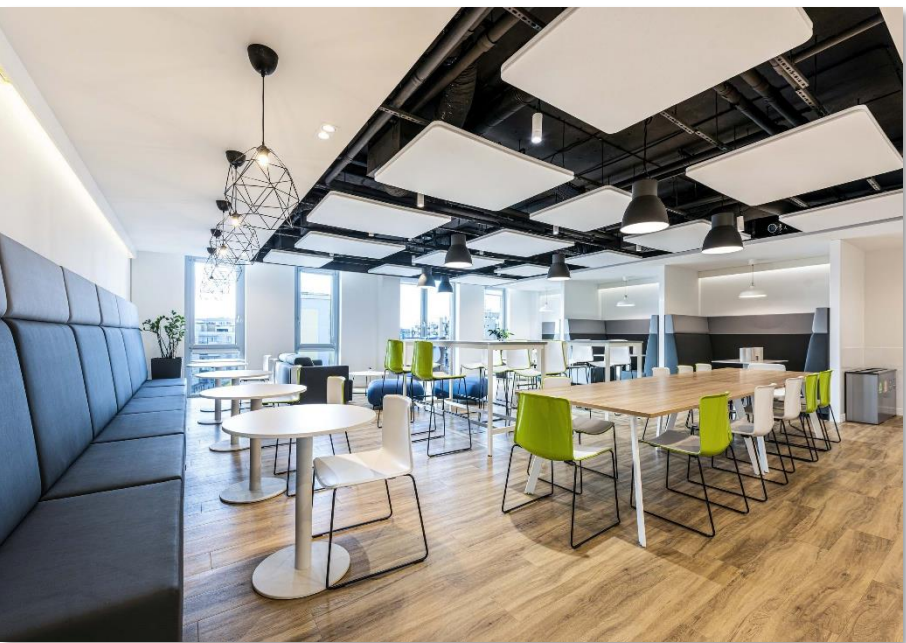
















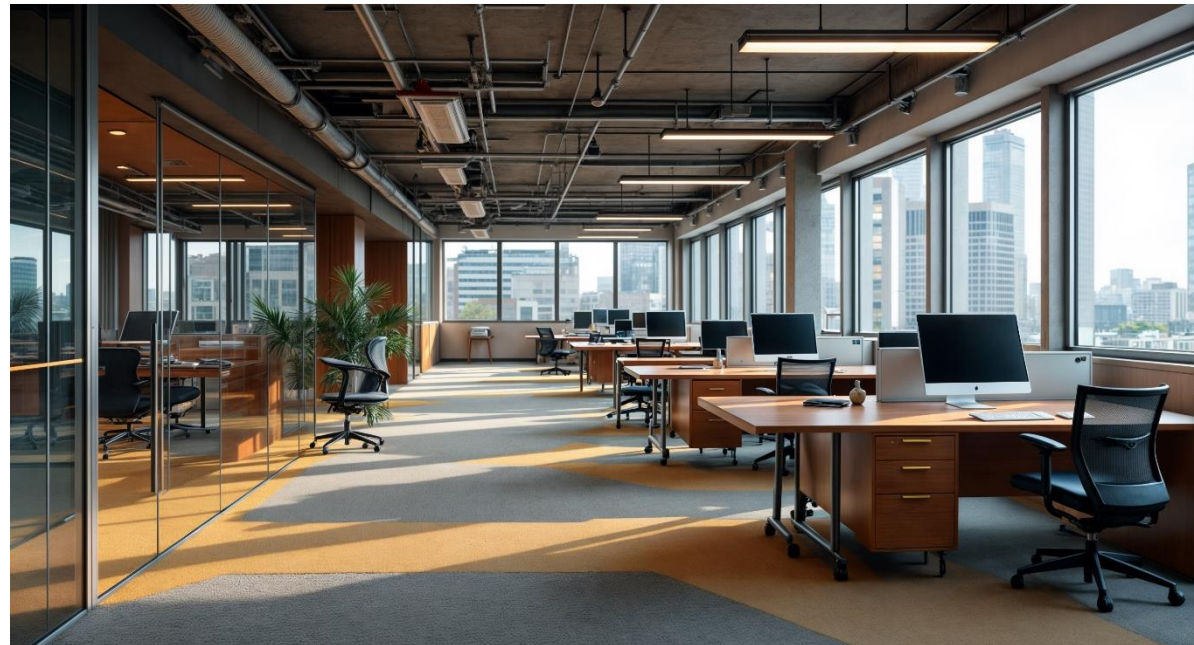
**IWG** International  
Workplace  
Group

## CoWorking Space

700m<sup>2</sup>

The project was born as a collaborative space that seeks to inspire productivity, creativity and community. The design is based on a warm industrial style, where the use of raw materials such as smoothed cement and exposed steel, is balanced with warm textures of natural wood in furniture and cladding.

















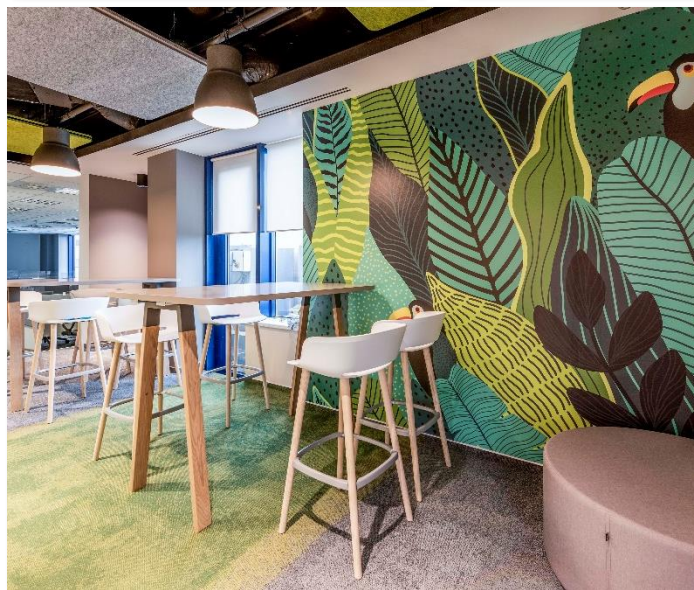
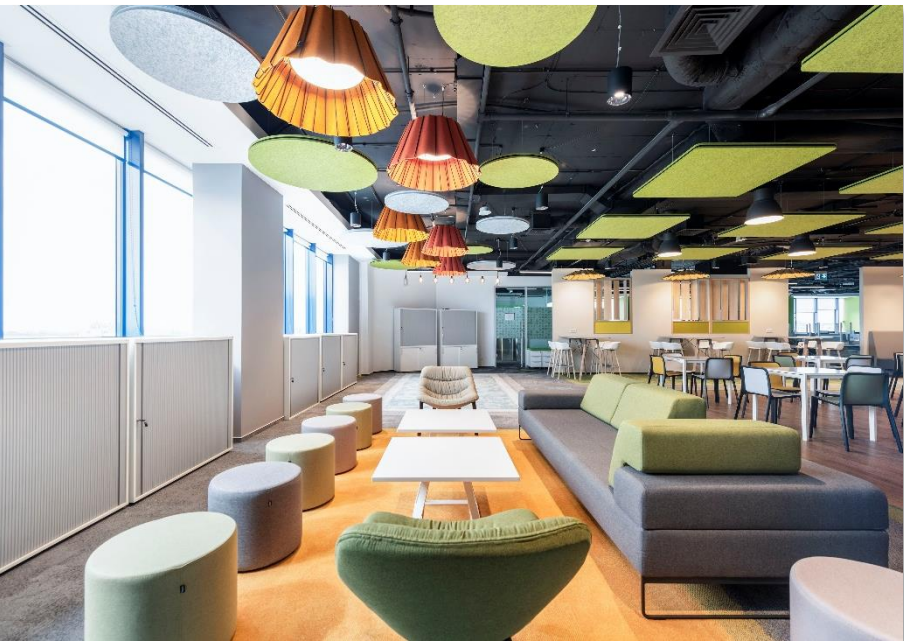
**GROUPON**

## Groupon Headquarters

2.700m<sup>2</sup>

Project for Groupon – Atlas Tower, Warsaw  
We executed a comprehensive interior renovation for Groupon's offices located in Atlas Tower, focusing on enhancing employee comfort, collaboration, and overall workplace experience.





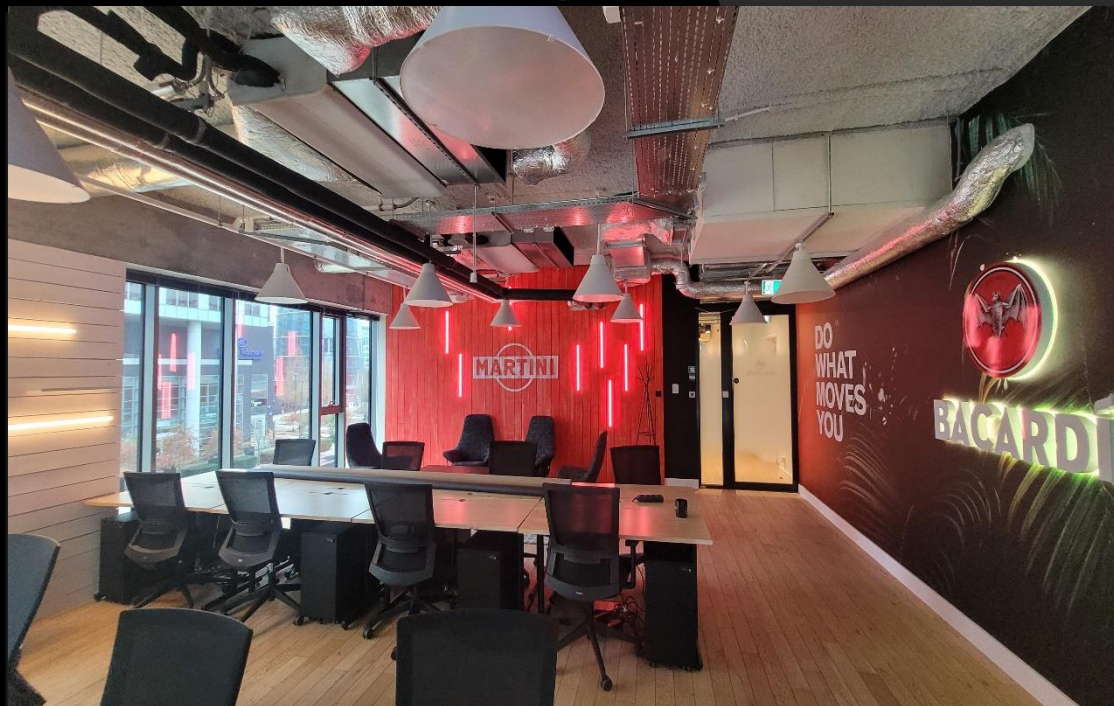












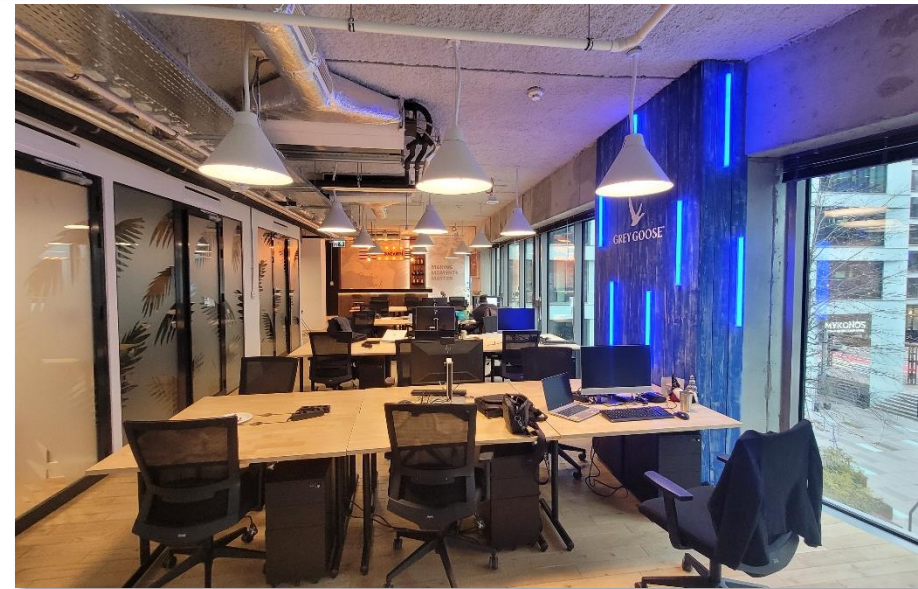
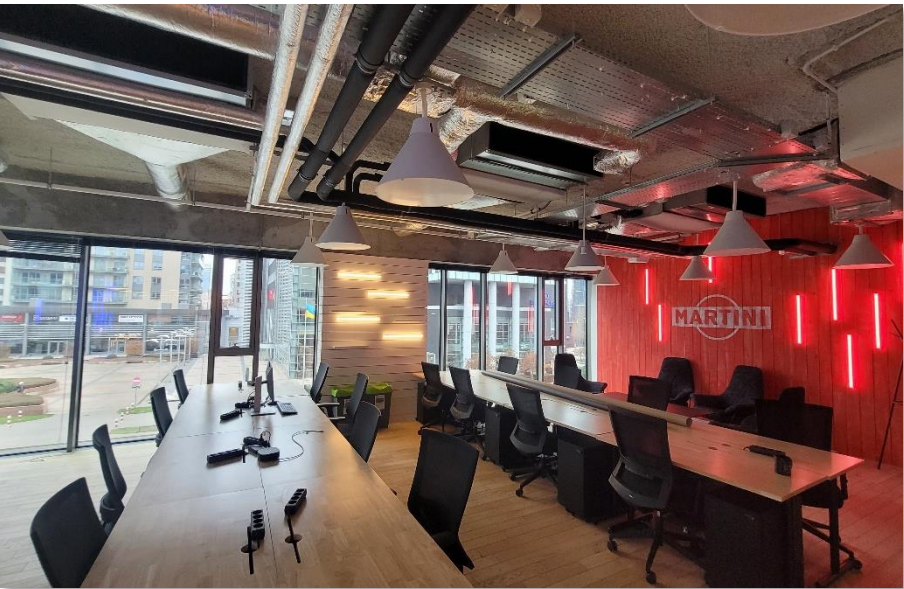
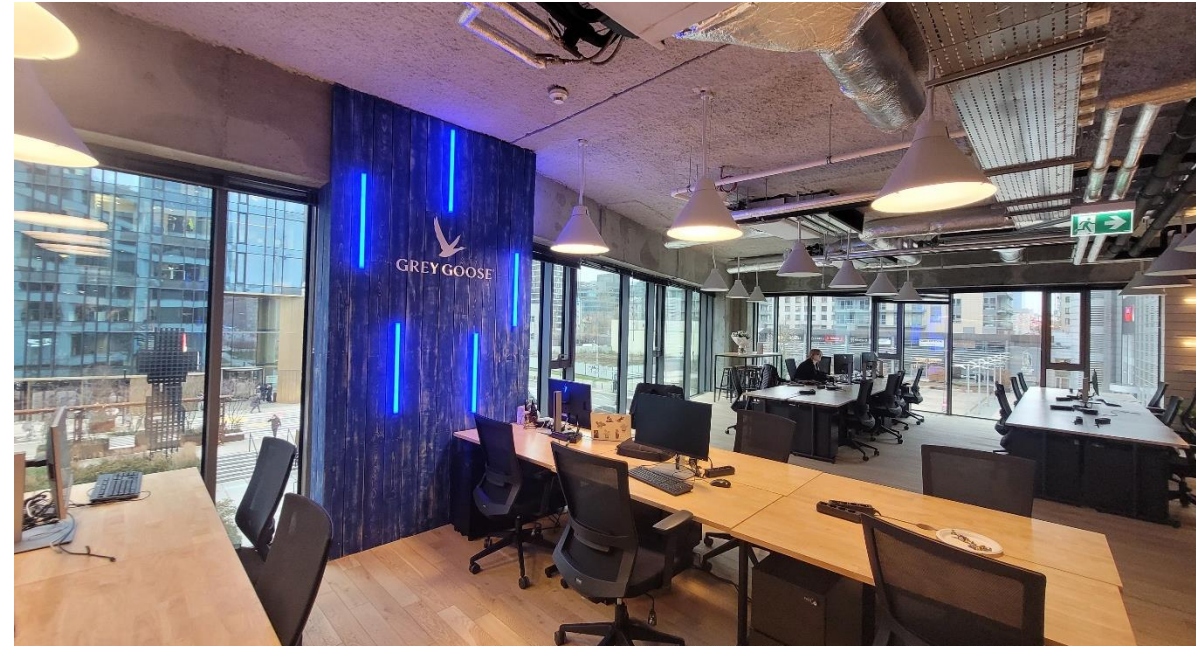
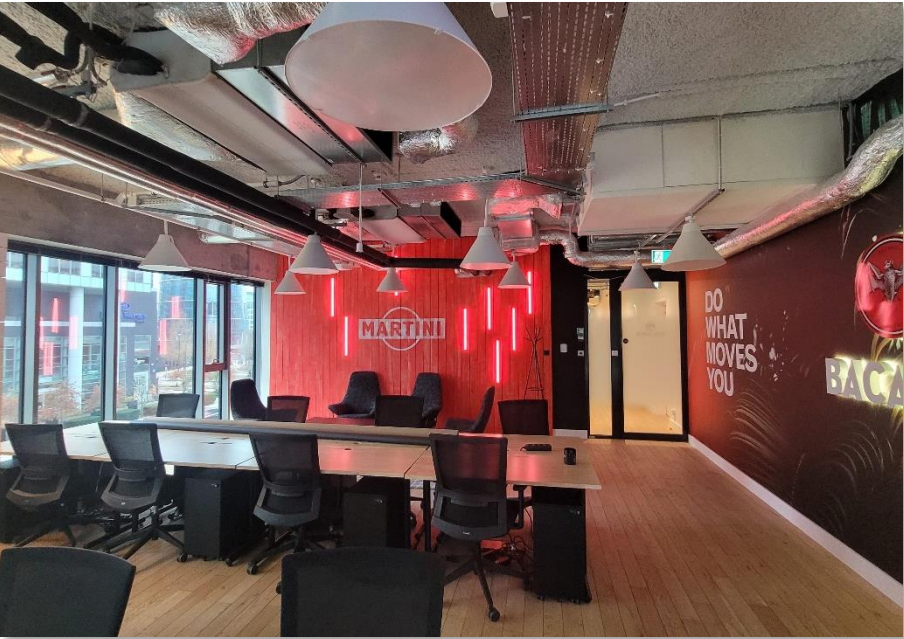
# wework

## Bacardi Headquarters

450m2

Our team was entrusted with the complete design and fit-out of a new WeWork office location in the heart of Warsaw, Poland. This project involved transforming a raw commercial space into a vibrant, fully operational coworking environment that reflects the WeWork brand's global standards while integrating local flair.







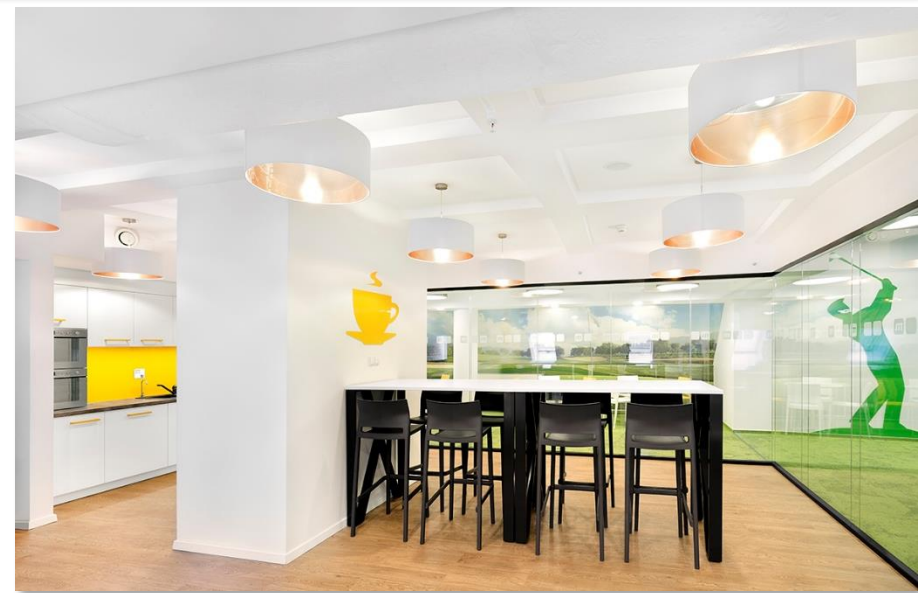
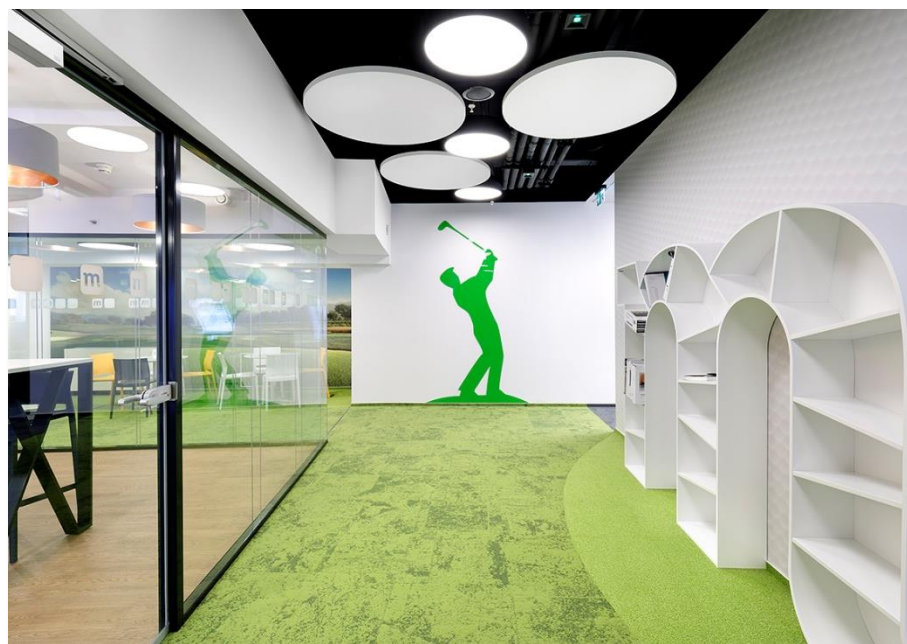


# mBank Headquarters

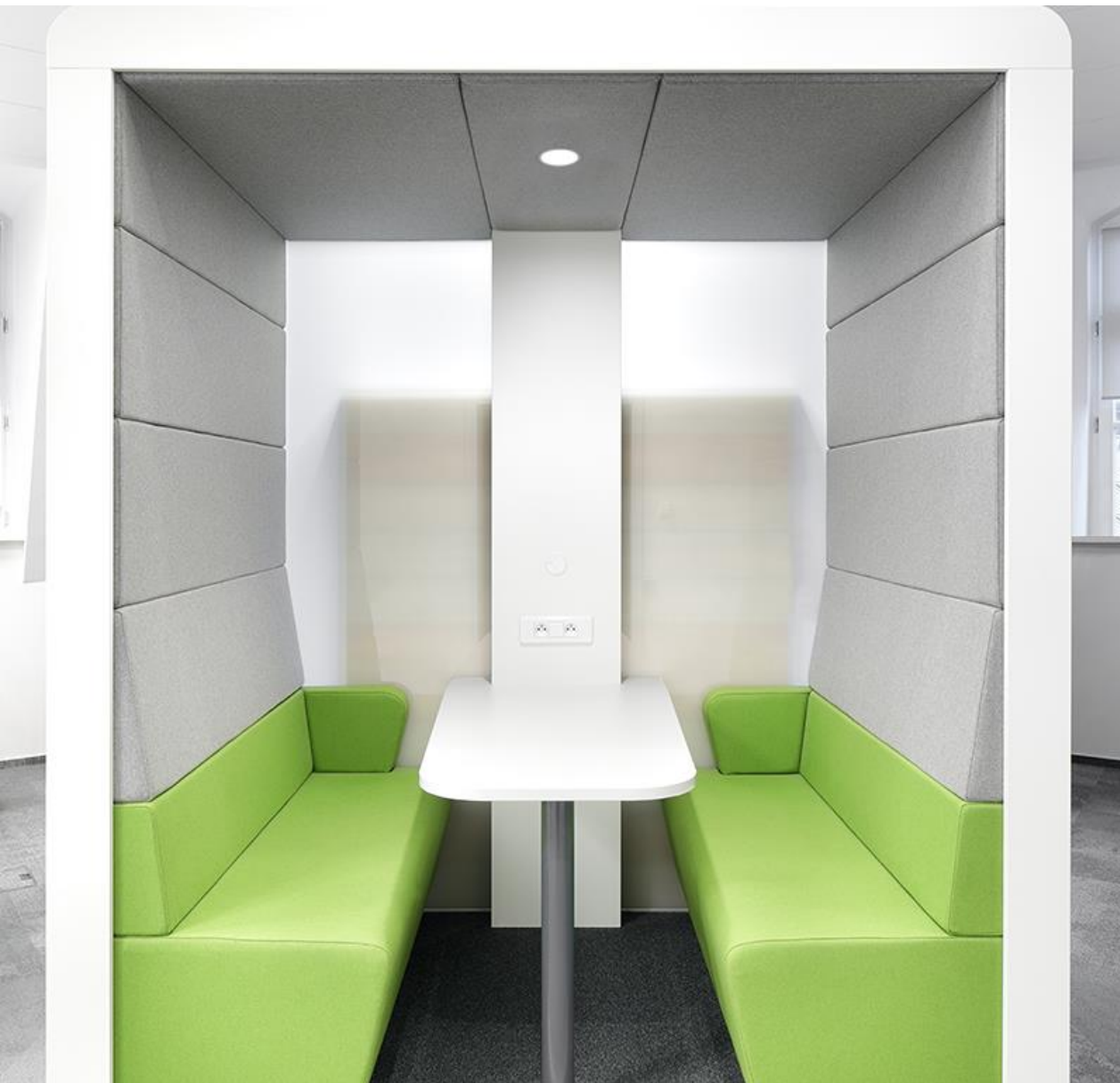
900m<sup>2</sup>

Design and construction of corporate office space for mBank. Complete refurbishment of workspaces.

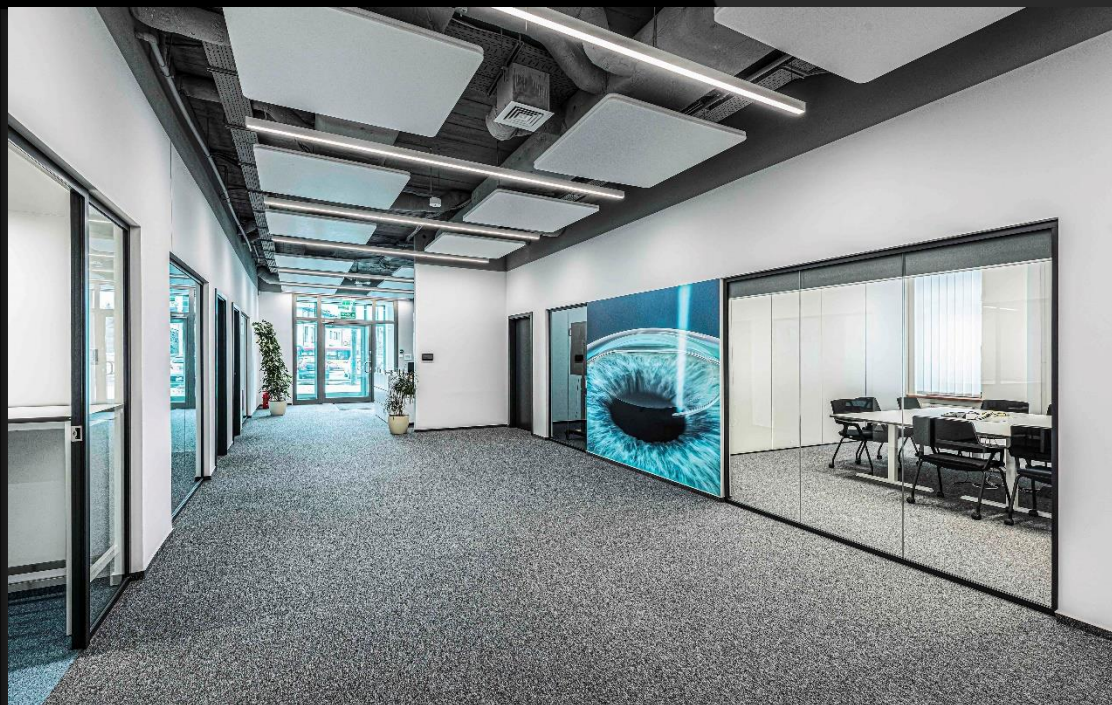












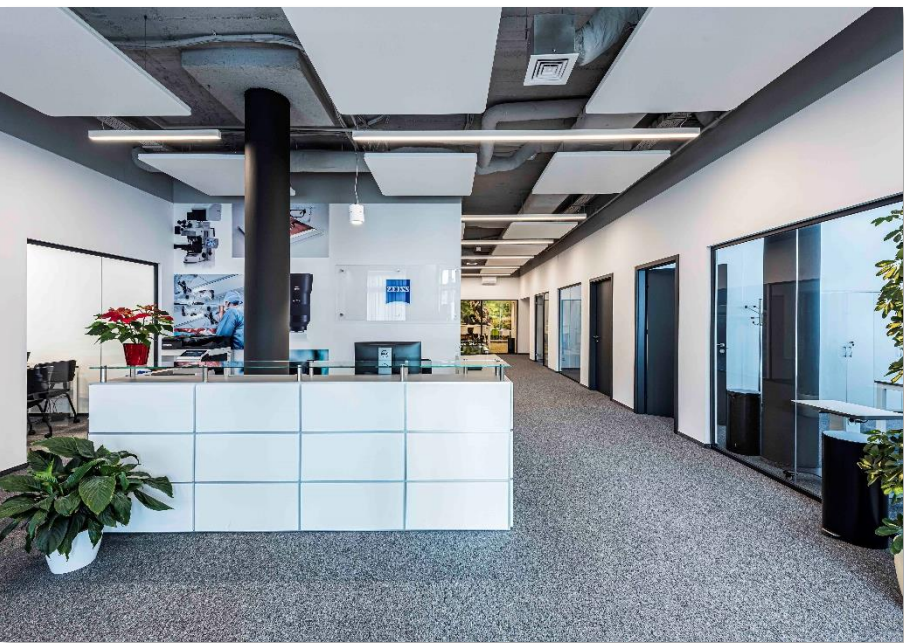
# Carl Zeiss Warsaw Headquarters

1.800m<sup>2</sup>

Design, Management, and Construction of  
Carl Zeiss Corporate Project

The project encompassed the comprehensive  
design, technical supervision, and full  
execution of works for the new corporate  
facilities of Carl Zeiss, a global leader in  
optical and precision technology.

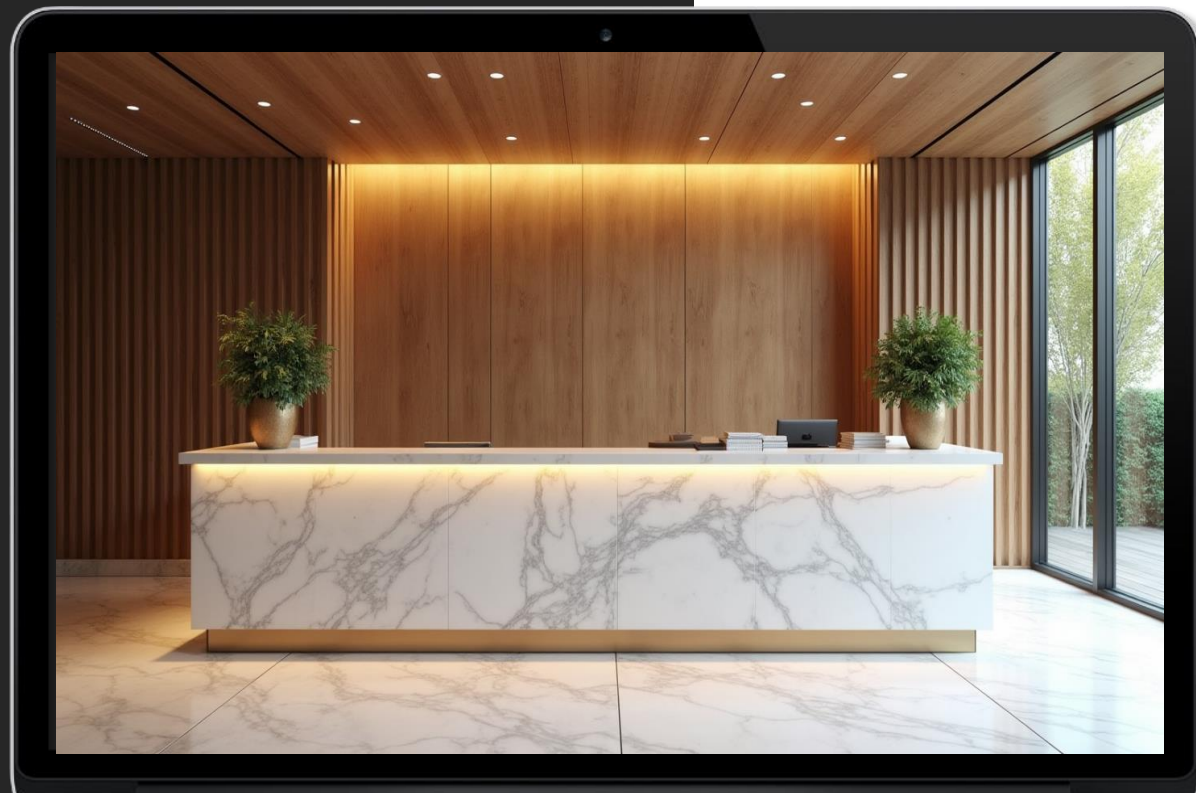












sabio

## Sabio Law firm Headquarters

450m2

The office exudes a timeless, professional atmosphere with a foundation rooted in natural materials and high-end finishes. The space is primarily crafted from rich, dark-toned wood — think walnut or mahogany — which frames the entire setting in warmth and refinement.











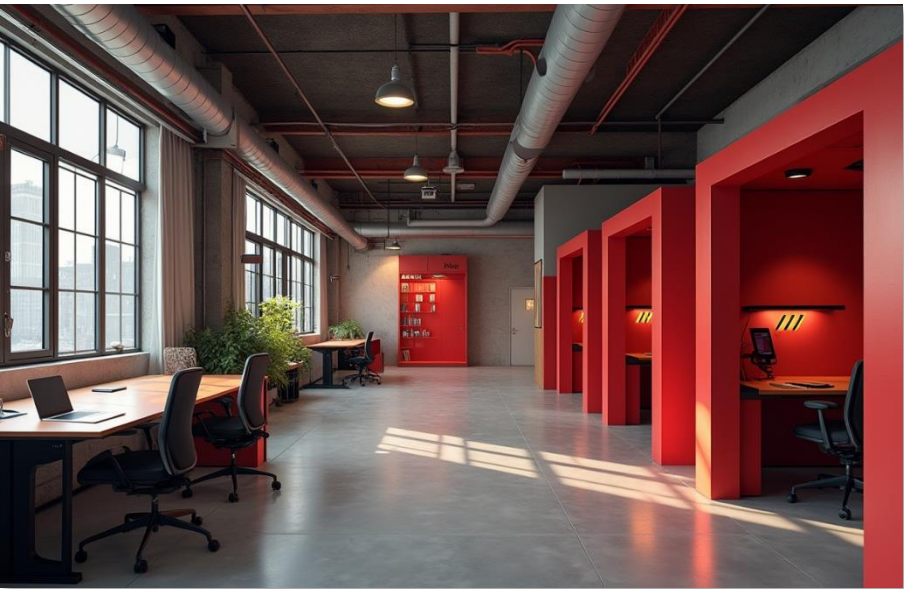


# Bloober Headquarters

900m<sup>2</sup>

The concept is based on an industrial warehouse converted into a futuristic and highly functional environment for a company in the technological-creative sector. The aesthetic combines the brutalist with the cyberpunk, transmitting innovation and avant-garde without losing the raw character of the original space.









*Lilly*

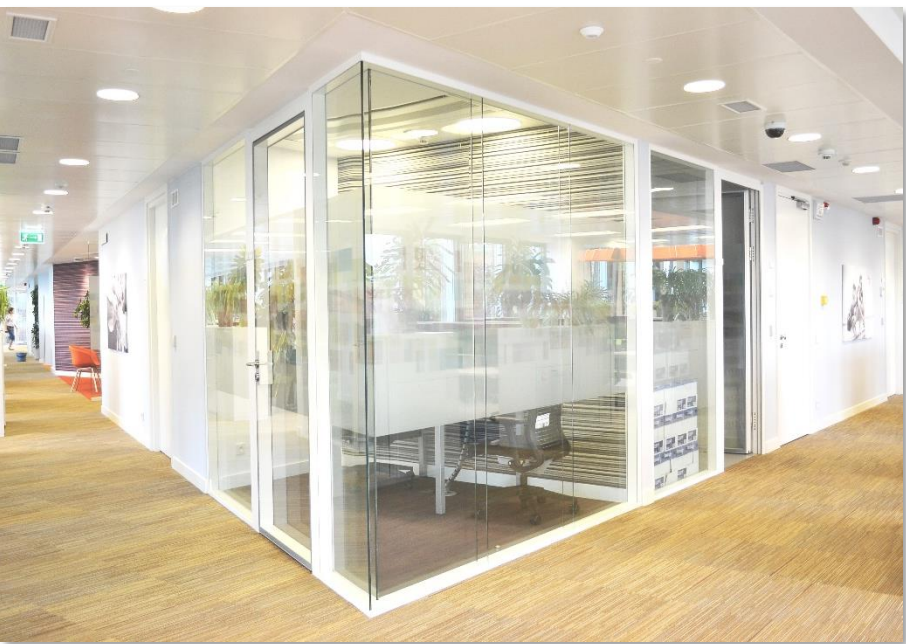
## Lilly Laboratories Headquarters

1.200m<sup>2</sup>

In cooperation with HOK London, we produced the execution design and fit out of Elli Lilly's headquarters.

The space needed to reflect the company brand values of innovation and passion. The new office creates an engaging and dynamic environment for the Lilly team, potential employees, and visitors.













# Carl Zeiss Headquarters, Paris

800m<sup>2</sup>

In close collaboration with the Global Real Estate Manager of Carl Zeiss AG, we designed and built their new corporate offices in Paris. The project was developed in strict alignment with Zeiss's global standards, ensuring consistency with the company's international identity, both functionally and aesthetically.











# Residential Projects

## Project list:

- House Barcelona
- House in Malaga
- House Warsaw
- Embassy Republic of Indonesia
- Apartment Pg. Gracias, Barcelona
- Apartment Valencia

Every detail counts: environments that inspire and captivate. We create interiors where comfort and elegance meet. Designs conceived for living and enjoying.





# House in Barcelona

3.000m<sup>2</sup>

A single-family home located in the upper region of Barcelona, with views over the city. The home is sited on the upper part of the section as a visual protection measure, while still allowing space for vehicle and pedestrian entrances. It is closed, via a brick and wooden latticework facade, from the two adjacent streets.









# House in Malaga

980m2

A stunning, modern two-story house with a minimalist yet warm architectural design. The structure combines exposed concrete with wood accents, giving it a sophisticated, earthy appeal. Large floor-to-ceiling windows dominate both floors, allowing abundant natural light to flood the interior and enhancing the connection between the indoor and outdoor spaces.









# House in Warsaw

1.500m<sup>2</sup>

The residence has a certain European refinement mixed with American style. On the ground floor a central hallway provide access to the dining room, kitchen, and living room. A pair of open staircases lead to the home's bridge and to 4 bedrooms, including the master suite. In these private quarters we integrated a tapestry of rich materials and textures: marble, brass, onyx, lacquer, bronze, silk, wool, and mirrored glass, which give color and texture that convey a deep sense of warmth.















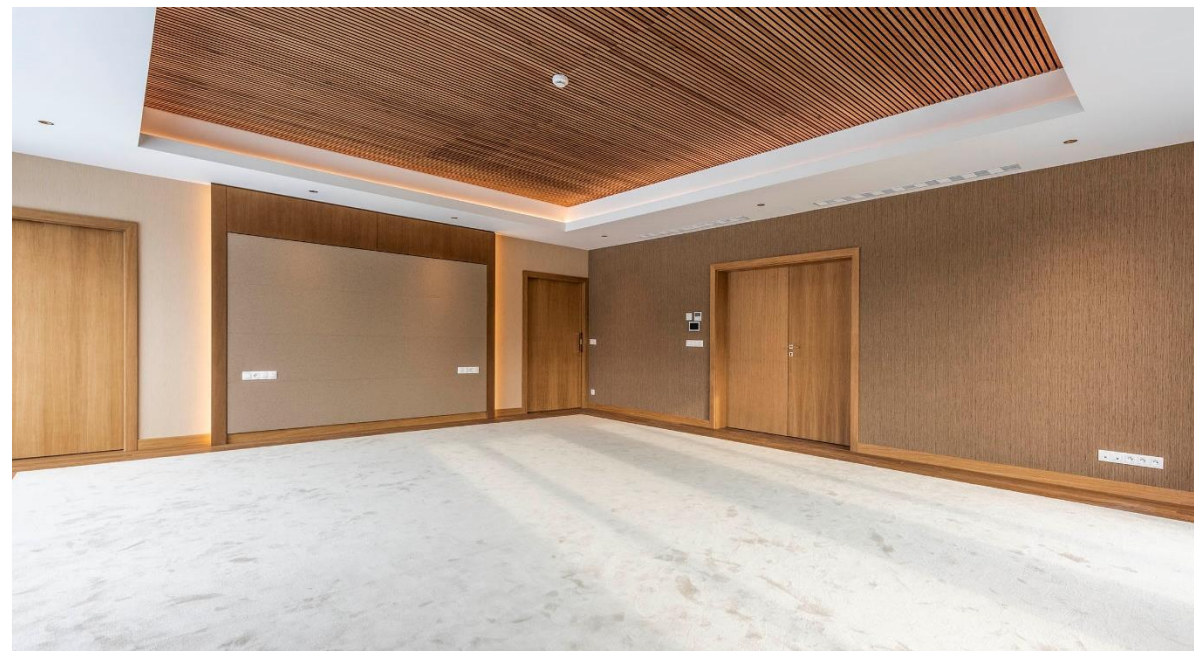
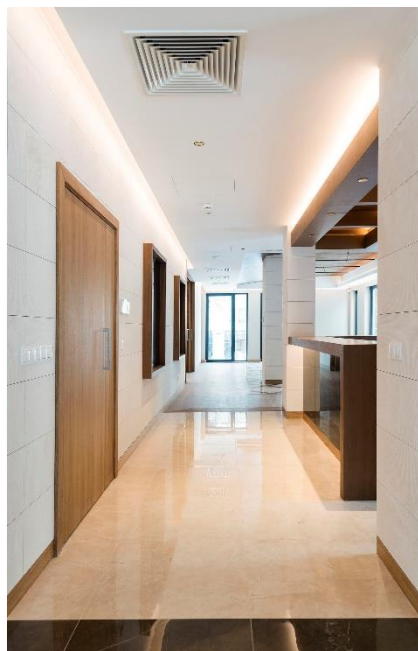


# Residence Embassy Indonesia

2.500m<sup>2</sup>

The design and construction of the Indonesian Ambassador's Residence in Warsaw is an extraordinary project, a four-story single-family home that harmoniously blends traditional Indonesian architectural elements with modern design. This residence reflects the rich cultural heritage of Indonesia while embracing contemporary comforts and functionality.

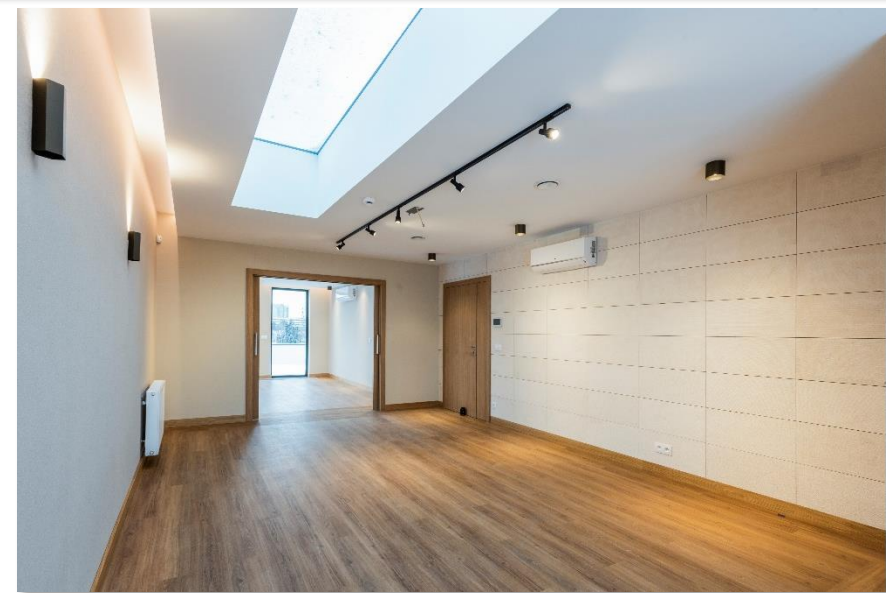
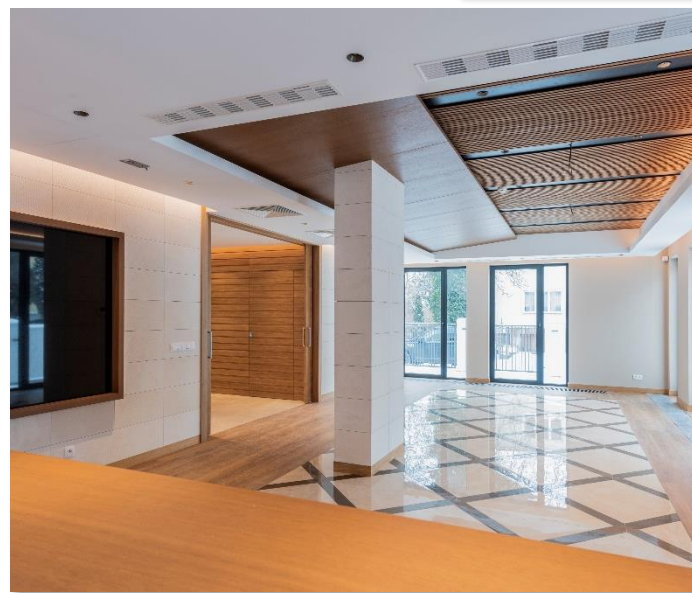
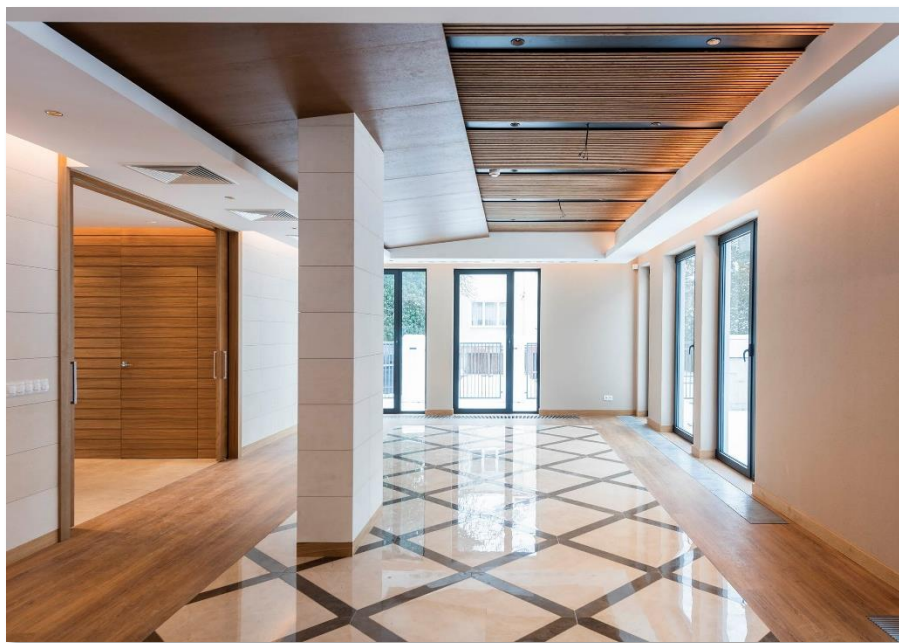
















# Apartment In Valencia

190m<sup>2</sup>

190m<sup>2</sup> Luxury Apartment in Valencia –  
Sophisticated Design for a Lawyer Located in  
the heart of Valencia, this meticulously  
designed 190m<sup>2</sup> apartment exemplifies  
refined urban living tailored to a professional  
lifestyle. Conceived for a prominent lawyer,  
the interior blends modern minimalism with  
timeless elegance, delivering a space that is  
both functional and expressive.







# Retail Projects

## Project list:

- Coffee Embassy, Warsaw
- House in Malaga
- House Warsaw
- Embassy Republic of Indonesia
- Apartment Pg. Gracias, Barcelona
- Apartment Valencia

"Our commercial space designs are strategically crafted to optimize communication, space, and your brand's sales. We configure your space to establish brand identity while enhancing the purchasing process and the overall customer experience."





# Coffee Embassy

380m2

Thoughtfully Designed for Comfort and Style  
This coffee shop combines modern aesthetics with functional comfort—featuring clean lines, natural light, warm wood finishes, and a balanced layout ideal for both social interaction and quiet moments.













hōgl

## Hoegl Shoe Shop

150m2

Design and construction of commercial premises for Högl, an Austrian shoe and accessories store. This design allows customers to enjoy an exclusive shopping experience, where every detail contributes to highlighting the quality and design of Högl products.









# Restaurant Vinyarroel Barcelona

1.200m<sup>2</sup>

Design and construction of the Vinyarroel restaurant in Barcelona, for the Olive Group, which fuses tradition and modernity, offering diners a sophisticated and comfortable atmosphere that enhances the culinary experience. In collaboration with the interior designer Estrella Saliatti.











# Thank you!

We are looking forward to cooperating with your company in the near future.

If you have any inquiries, please do not hesitate to contact us.





Ul. Krolowej Marysienki 7b  
02-954, Warsaw, Poland

 +48 666 244 516  
 i.molnar@beplan.pl

[www.beplan.pl](http://www.beplan.pl)



Av. Francia 47, 4<sup>th</sup> floor.  
46023, Valencia, Spain

 +48 666 244 516  
 i.molnar@beplan360.es

[www.beplan360.es](http://www.beplan360.es)