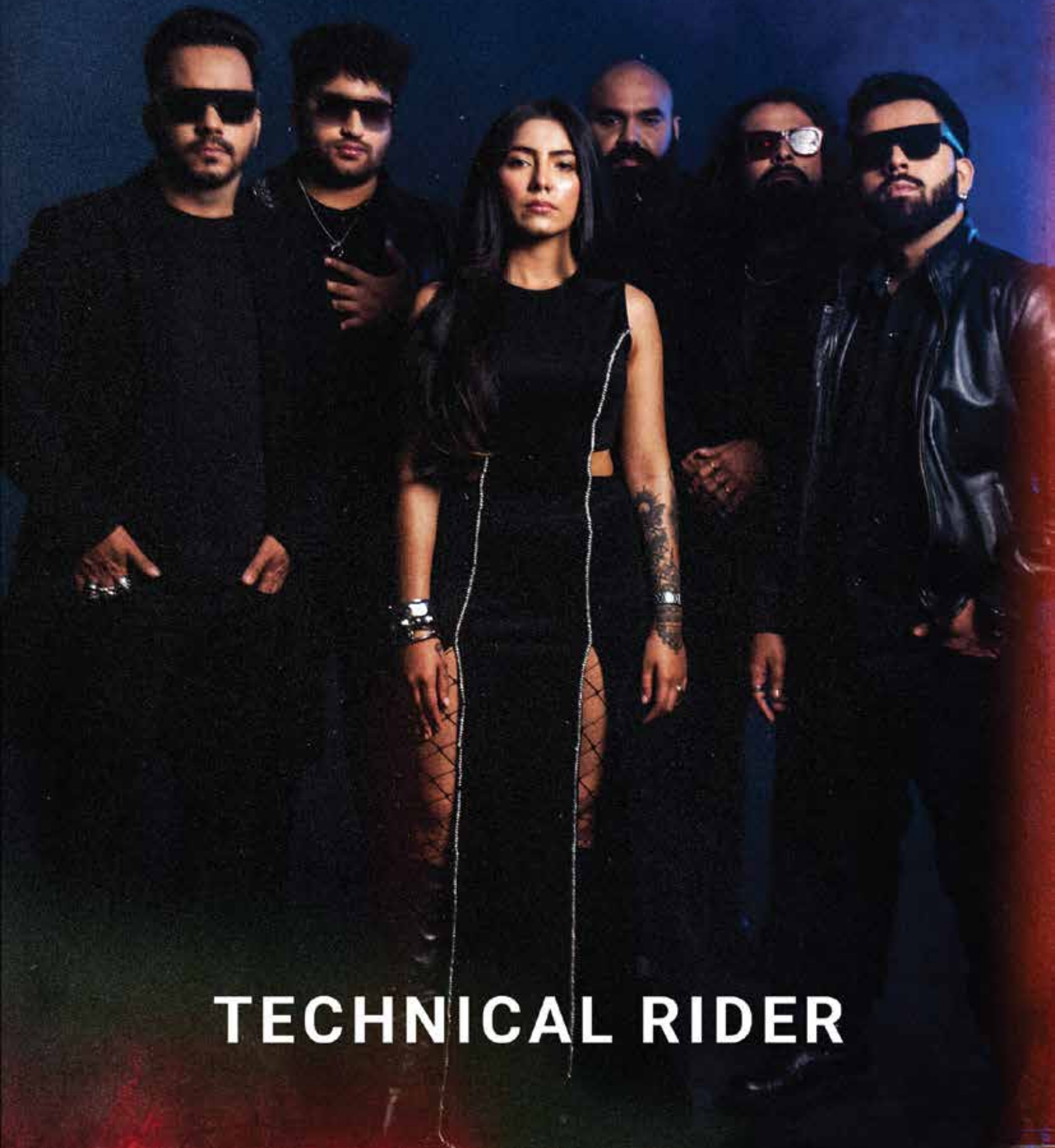


ZIKRRR



TECHNICAL RIDER

PA SYSTEM

The PA should be at least a **3-way Line Array System.**

- The PA should be setup by the vendor depending on the venue, location and acoustics.
 - The PA should be capable of about 115 dB SPL at FOH with headroom for a bit more.
 - The PA Subs (Subwoofer) should be routed on a separate Aux.
 - Acceptable brands of PA are as follows:
 - D&B AUDIOTECHNIK SL-SERIES
 - L'ACOUSTICS K2
 - ADAMSON E15
 - JBL VTX V25

 - D&B AUDIOTECHNIK V-SERIES
 - L'ACOUSTICS KARA
 - Adamson S-10
 - JBL VTX A12
- The system should be setup, tuned & aligned (with removing all the feedback from FOH as well as the monitors) and ready by the time the band reaches the venue



(In case the above brands are not available, please consult the band engineer about the same).



CENTRE FILL

Same As FOH Speakers (Adequate Centre fills With Subs for the dance floor are **COMPULSORY** applicable in Outdoor Venue & Indoor Venues.

Note: Centre Fill has to be routed through a Matrix Out.

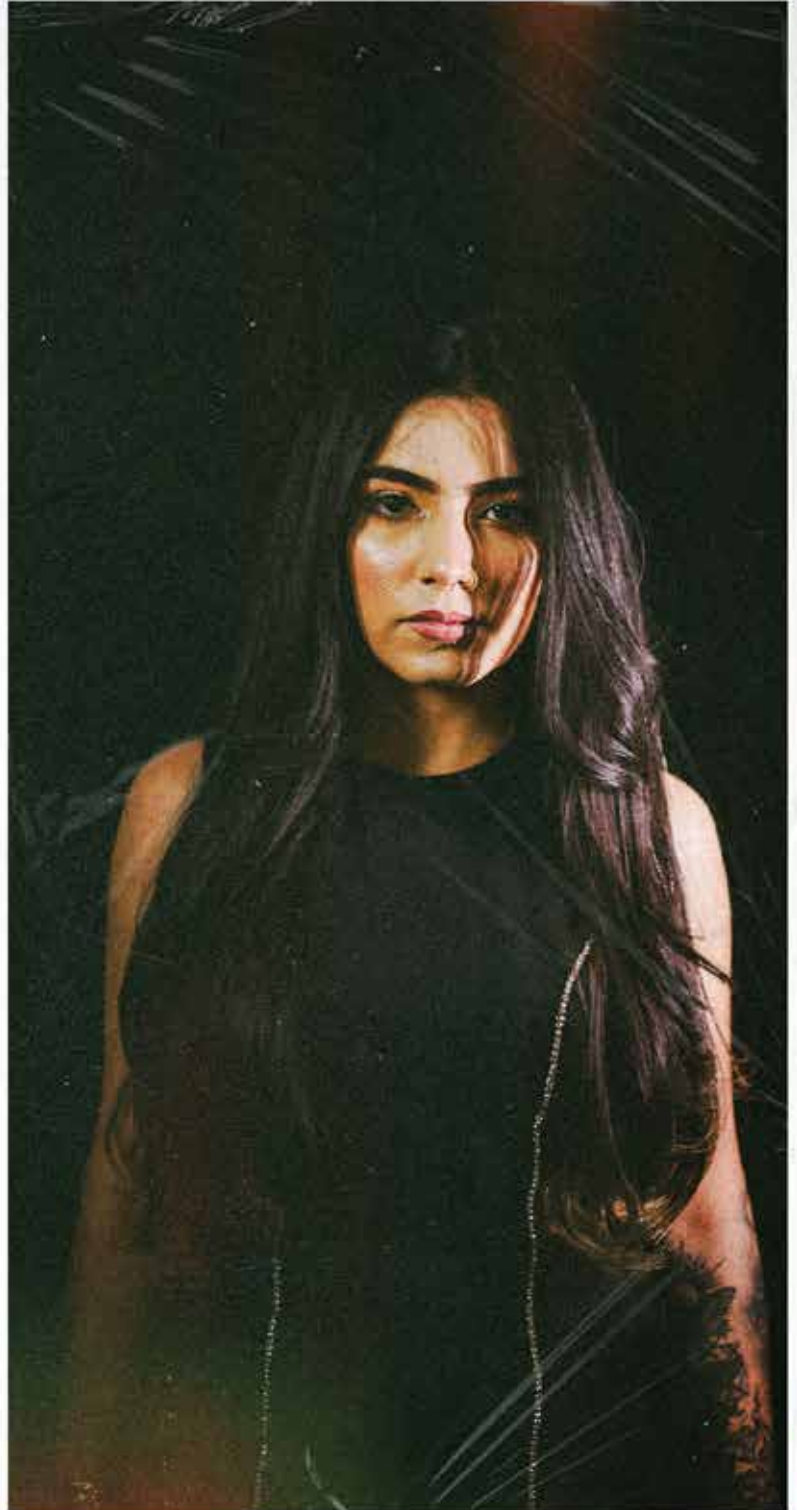
2 Stage Technicians on stage and One System Engineer is must for the band.

Consoles (In order of preference)

1. Digico Quantum 338/SD10,
2. Avid Venue S6L ,Yamaha CL-5,
3. Allen and health DLIVE S7000

Note: SC48, VI 1, VI3000, Yamaha LS9 & Si Expression/ Impact will not be accepted in any case.

- In case of non-availability of the mixer or anything else which is not available from the above mentioned list of equipments please contact the band ASAP.
- Stage Monitors 5 + 1 Drum Sub (Preferred Brands - DnB Max 2, JBL VRX)
- 1 Small Powered Shout Wedge at FOH.
- In Ear Monitors - 9
- 1 Double Tier Keyboard Stand (K&M Spider Pro /Hercules)
- 2 Guitar Stands
- 1 Flight Case near Keyboards for Laptop.
- 2 Flight Case for Percussion.



In-ear monitors

Preferred Brands with Mode Nos are mentioned below

Sennheiser 2000/G3 300, Shure PSM 900

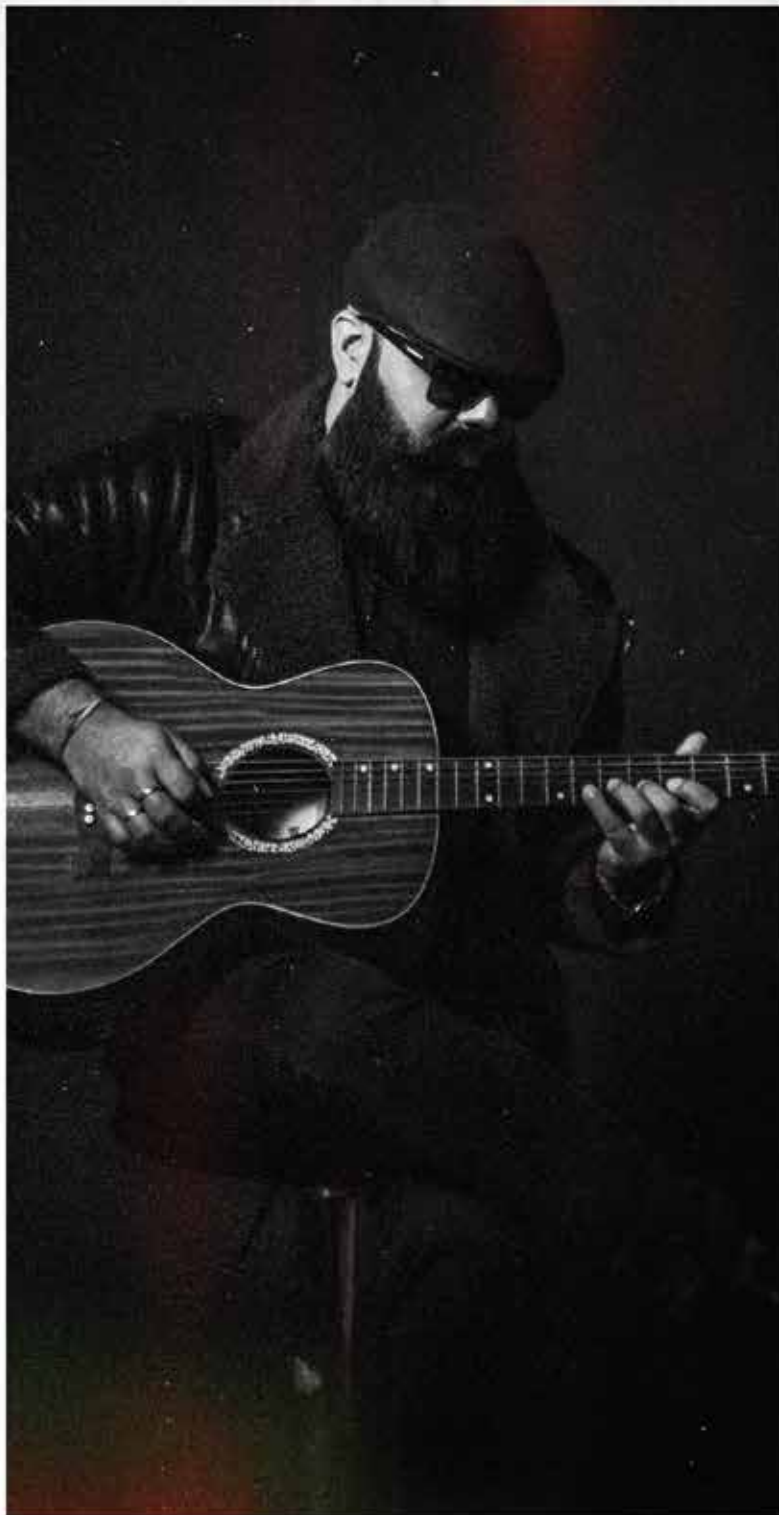
CONSOLE POSITION IS FOH.

Please do not call the band to discuss any alternate positions for the placement of the Console. This is very important and we request you to please follow this.

- If the stage size is above 26 Feet in width then a riser for the drums is necessary of the size 8x8.

Power boards on stage required as per the following plan.

1. Extreme Left of stage
 2. Extreme Right of Stage
 3. Near drums
- Minimum **3 hours** are required for the band to complete the setup and the sound check. Please make sure that there is enough time for the check.
 - Drum Kit Placement is preferred in the **centre of the stage**
 - Also, Please inform the band in case there is an **LED Wall** behind the stage
 - Please use a **separate genset** for the sound and light system
 - The band will **not share the stage or any equipment** with any other band
 - Please make sure that all input channels are wired in and checked before the engineer arrives on site. The engineer will be there **30 min** before the band arrives for the sound check. In case of any changes, please inform the band coordinator.
 - 2 Ramp monitors are must in case a ramp is there



VOCALS

Vidhi Tyagi & Saurabh Jolly

1. 2 MICROPHONES (Cordless): SHURE AD4D/UR4D/SENNHEISER D-6000
2. 2 Foot Monitors
3. 2 In-Ear Monitors



BASS GUITAR

Mohit Sharma

1. Bass Guitar Stand -1 nos.
2. 1 SM58 Corded as Talkback
3. 1 DI Box
4. Bass Amp (in order of preference):
Hartke LH1000 with 4x10 Cabinet /Mark Bass STD104HR cabinet with little mark tube 800 bass amp head
5. **STRICTLY NO AMPEG Bass AMP**
6. 2 Foot Monitor
7. 1 Power Board+1 IEM



GUITARS

Himanshu Rai

1. 1 Shure SM58 Corded on stand.
2. 1 IEM + 1 Floor Monitor,
3. 1 DI BOX
4. Guitar Amp: **FENDER TWIN REVERB** or **MARSHALL JCM 900** (Please consult the Band engineer before providing any other Amplifier set.)
5. 1 POWER BOARD
6. 3 Jack To Jack Cables
7. 1 Heavy Duty Guitar Stand





KEYBOARDS

Lavanya Khanna

1. **YAMAHA MONTAGE M7/M8 & 1 KORG KRONOS**
2. Double Keyboard Stand - 1 Nos.
(Hercules, K&M)
3. Keyboard Amp- Roland KC - 880/550
4. 4 DI BOX *(Patched Left to Right)
5. 1 IEM, 1 Power Board

DRUMS

Mohit Sharma

1. Riser 8x8x1.5 minimum
2. Drum Kit (in order of preference) - Pearl Masters/Reference, Tama Star Classic, DW Collector Series or Mapex Armory (No Alternate)
3. 4 Boom Cymbal stands + 1 Extra Hi-Hat Stand
4. Cymbals - Zildjian A/K Custom Series (Please avoid K custom hybrid), Meinl Byzance
5. 1IEM + 1 foot monitor + 1 Drum Sub
6. 1 Extra Snare Stand
7. 1 Double Bass Pedal - Pearl Eliminator /Tama HP910LWN

DRUM SHEILD ON THE RISER.



NOTE: - SHURE PG series Drum mics will not be accepted in any case.

Percussion:

- **1 DJEMBE**
- **1 DARBUKA**
- **1 SET CONGAS**
- **1 SET TIMBALI**
- **1 CHIMES**

(Above instruments provided by the vendors)

- **PERCUSSION MIC FOR TABLA, DHOL AND DHOLAK**
- **2 FLIGHT CASES**
- **1 IEM**

Input Patch List

S.No.	Channel No.	Mic./DI
1	KICK IN	SHURE BETA 91A
2	KICK OUT	SHURE BETA 52/SENNHEISER E902/AUDIX D6
3	SNARE TOP	SHURE SM57
4	SNARE BOTTOM	SHURE SM57
5	HI HATS	SENNHEISER E914 OR SHURE SM81/57
6	TOM 1	SENNHEISER E904, OR AUDIX D2
7	TOM 2	SENNHEISER E904, OR AUDIX D2
8	FLOOR TOM	SENNHEISER E904, OR AUDIX D2
9	OVERHEAD L	SENNHEISER E914/SHURE SM 81
10	OVERHEAD R	SENNHEISER E914/ SHURE SM 81
11	BASS DI	DI
12	GUITAR DI	DI
13	KEYBOARD L	DI
14	KEYBOARD R	DI
15	KEYBOARD 2L	DI
16	KEYBOARD 2R	DI
17	EP CABLE L	DI
18	EP CABLE R	DI
19	FEMALE VOX	SHURE AD 4D/UR 4D/OR SENNHEISER D6000
20	MALE VOX	SHURE AD 4D/UR 4D/OR SENNHEISER D6000
21	GUITAR BACKING VOX	SHURE BETA 58
22	BASS BACKING VOX	SHURE SM58
23	SNARE 2 TOP	SHURE SM 57
24	SNARE 2 BOTTOM	SHURE SM 57

Input Patch List

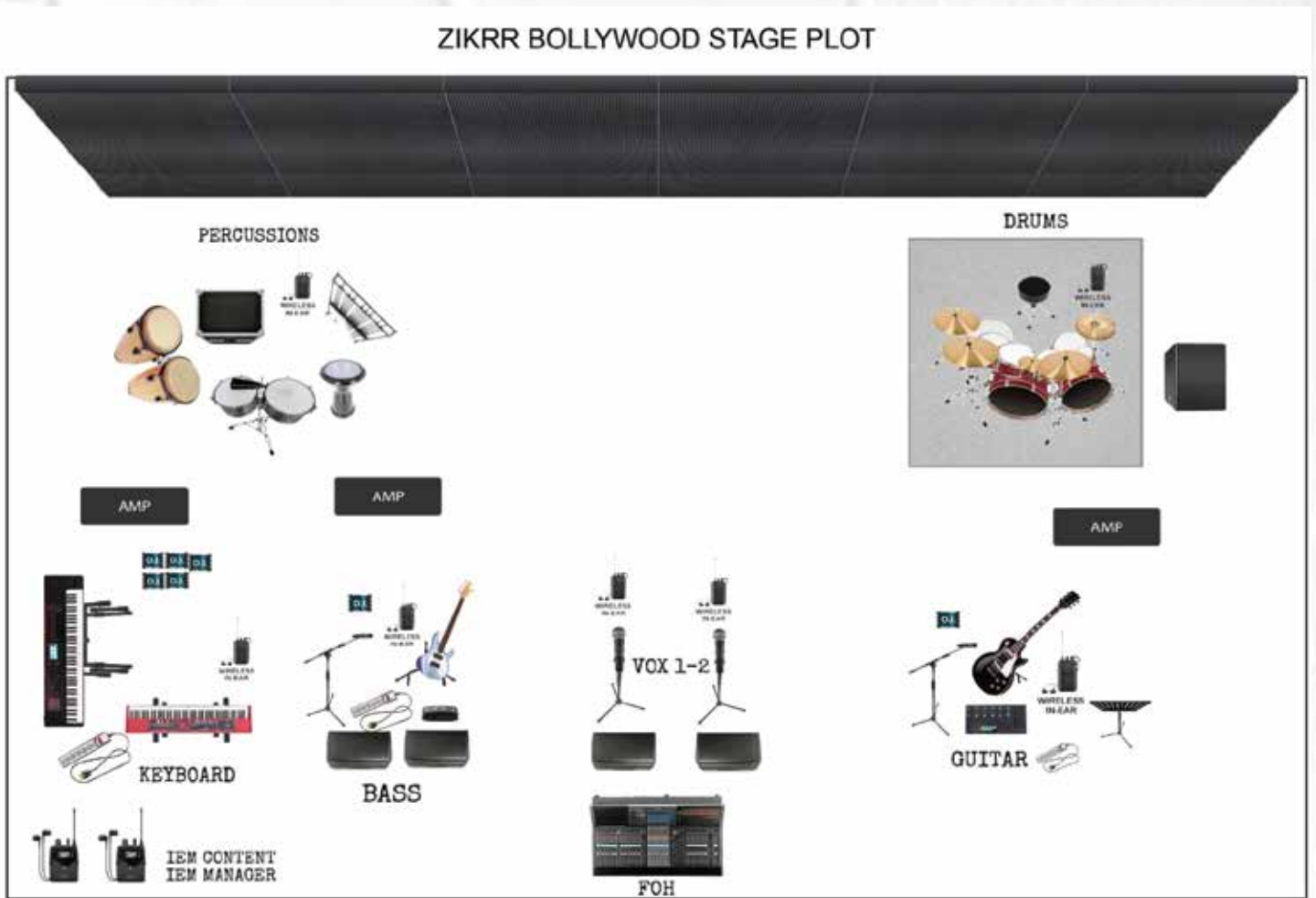
<i>S.No.</i>	<i>Channel No.</i>	<i>Mic./DI</i>
25	DHOL CHATTI	SHURE SM57
26	DHOL BAYA	SHURE SM58
27	CONGA HI	SHURE SM57
28	CONGA LOW	SHURE SM58
29	TIMBALE HI	SHURE SM57
30	TIMBALE LOW	SHURE SM58
31	DJEMBE	SHURE SM58
32	DARBUKA	SHURE SM57
33	TABLA CHATTI	SHURE SM57
34	TABLA BAYA	SHURE SM58
35	OCTOPAD	DI
36	OCTOPAD	DI

Output Patch List

1	AUX 1	FRONT MONITORS -2 NOS. (+2 IN CASE OF RAMP)
2	AUX 2	BASS GUITAR MONITOR-2
3	AUX 3	GUITAR MONITOR-1
4	AUX 4	DRUMS MONITOR-1
5	AUX 5&6	DRUMS IEM (STEREO)
6	AUX 7&8	KEYBOARDS IEM (STEREO)
7	AUX 9&10	FEMALE VOX IEM
8	AUX 11&12	MALE VOX IEM
9	AUX 13&14	GUITAR IEM
10	AUX 15&16	BASS IEM
11	AUX 17	DRUM SUBWOOFER
12	AUX 18	PA SUBS

ZIKRR

Stage Plot (Overhead View)



Please go through the full technical rider (including the stage plot)
and for any queries, get in touch with

MOHIT SHARMA at 9999760778
MANU (Sound Engineer) at 88265 48799