



**SIDRA INDUSTRIES  
COMPANY**  
شركة سدرة للصناعة

# COMPANY PROFILE

COMPANY PROFILE

# VISION

Our Vision is to become the Integrated company of choice in the region; structured for success, we maintain, manage, reduce cost and allocate resources efficiently for your Assets with sustainable approach.

# MISSION

Our mission is to deliver high-quality products and services through innovation, precision, and integrity. We are committed to exceeding client expectations by ensuring excellence in every stage of our operations — from design and manufacturing to delivery and support. By fostering a culture of continuous improvement, teamwork, and customer focus, we aim to build long-term partnerships and contribute to sustainable industrial and economic growth.

# VALUES

Our people are at the frontline of your priority and together we created values that are built to outperform in our role in Commercial, Industrial, & Residential Industry.



# WHY WE EXIST

Sidra Industries is with the desire to delight the client. One way is to make it clear through our understandings with each other. Our aims to assist you in achieving your goals & Objectives. We want to build a solid, easy and quality business experiences that is relevant to your needs.

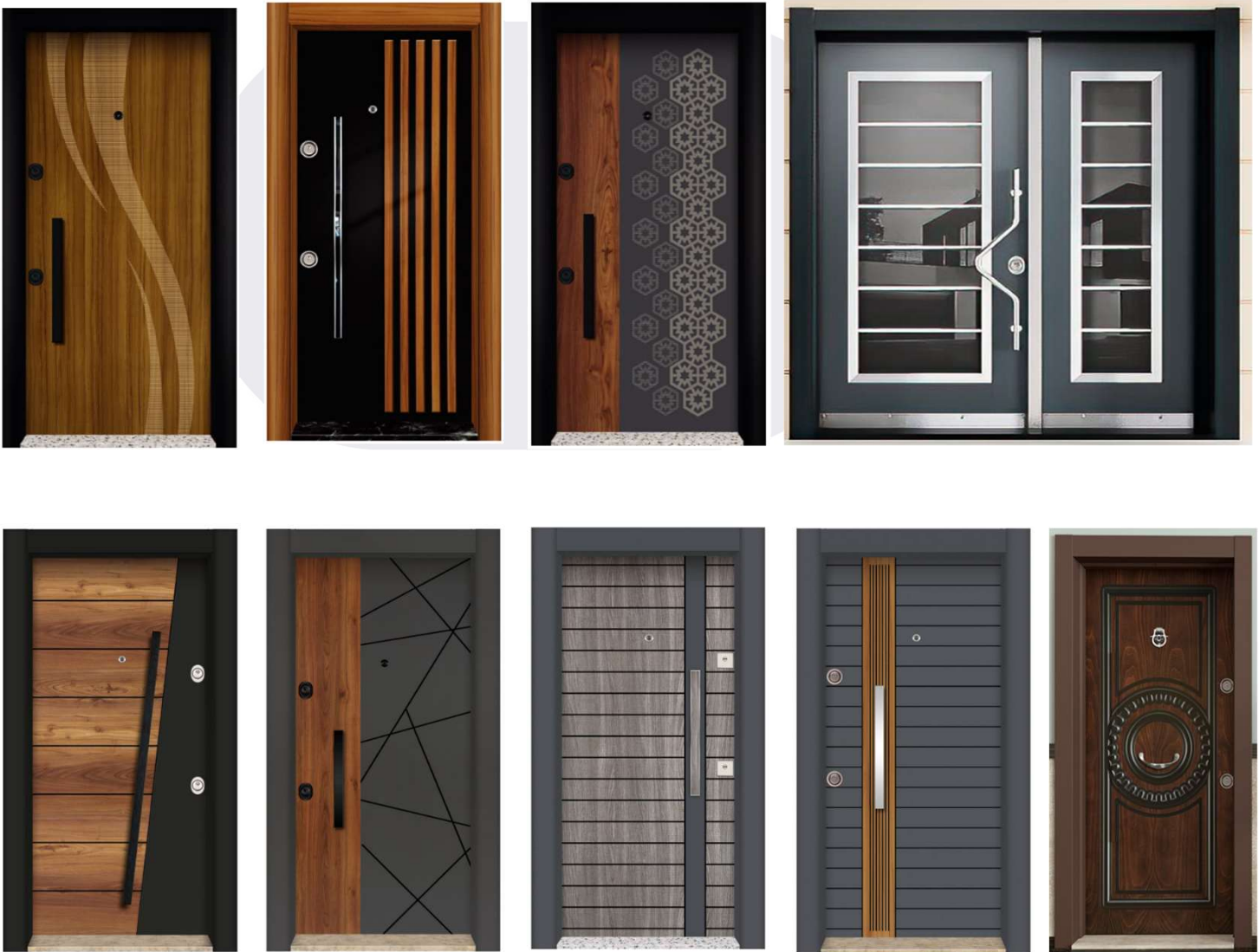
# WE PROVIDE BEST SOLUTION

Our concerns one of business to provide high quality of products and services with a complete ranges in All types of Steel Structure Fabrication & Erection, Turkish Door with timely upgradations in the product, Storage Sheds, Pre-Engineered Buildings, Aluminum & Glass, and Pre-Fabricated Porta Cabins such as Offices, Accommodations, Kitchen, Washrooms and many more.

# Turkish Door

A **Turkish Door** is a premium-quality door known for its **elegant design, superior craftsmanship, and high durability**. Originating from Turkey's rich architectural tradition, these doors combine **modern technology with classical artistry** to deliver both beauty and security. Typically made from **solid wood, steel, or a combination of materials**, Turkish doors feature intricate patterns, detailed carvings, and durable finishes that make them ideal for both residential and commercial buildings.

They are valued for their **aesthetic appeal, sound insulation, weather resistance, and advanced locking systems**, ensuring long-lasting performance and safety. With a wide variety of styles—from traditional to contemporary—Turkish doors enhance the appearance and value of any property while maintaining international quality standards.



# Main Gates

Depending on the purpose, budget and expectations from a gate, there are numerous varieties available in the market. Each of them is typically made with different materials like wood, steel, aluminium, iron, PVC, etc., which has its own specialties. Here are the basic types of gate operating models with their features:

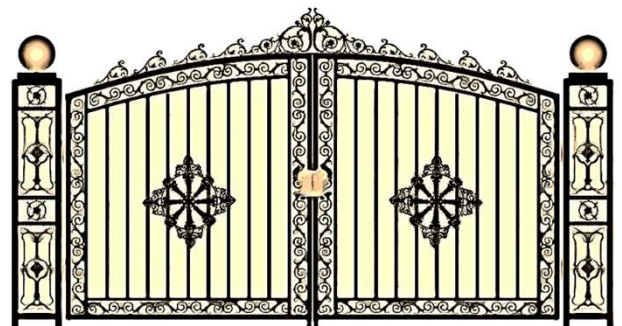
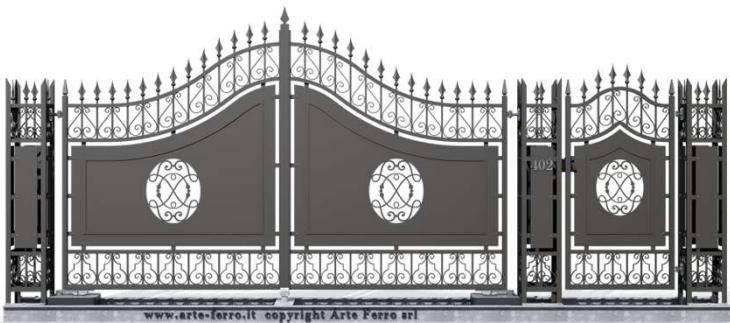
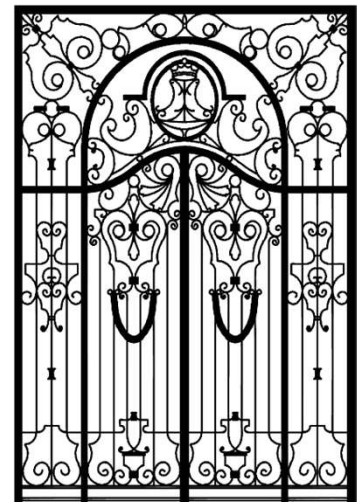
**Swing Gates:** As the name suggests, these “door-like” gates operate in a swing fashion, with the help of hinges secured to a wall. They are optimal for areas with wide-open spaces and come with single or double doors.

**Sliding Gates:**

For homes with space constraints, Sliding gates work like a charm, as they move horizontally on a bottom track. They glide using a pair of wheels and come in different styles.

**Automated Gates:**

They are advanced gates which reduce manual intervention. By installing sensors and motors on any of these models, you can get them to open or close on their own!



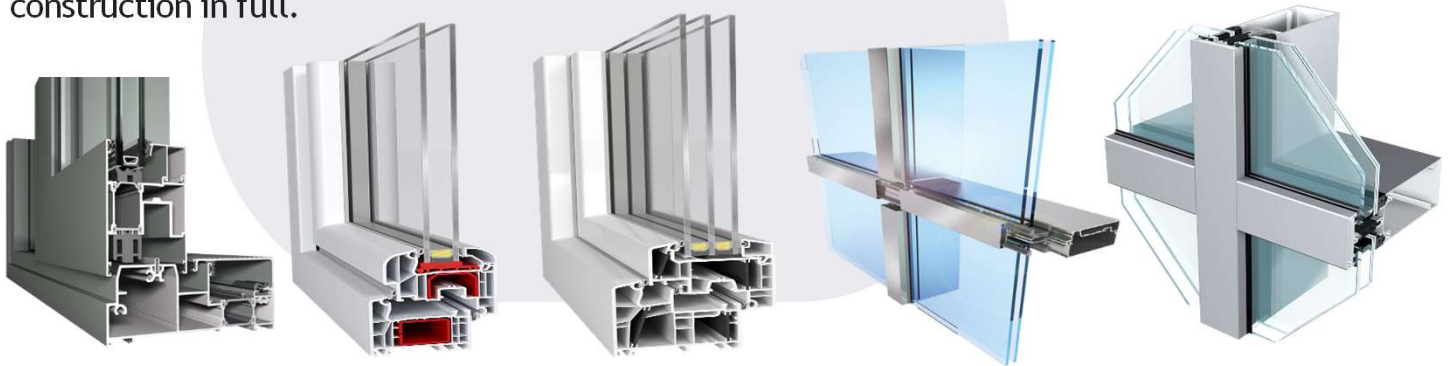
## Aluminum & Glass

Firm and durable Products made of aluminum profiles are characterized by an exceptional resistance to external factors, stability and durability.

This is especially relevant in industrial construction as well as for exterior doors.

A variety of overall dimensions and shapes, allowing implementing even the most daring ideas of architects, re and intrusion prevention are main advantages of aluminium products. We use powder paints for the decor of aluminium products, so the range of colours, gloss level or the choice of texture is very wide as you can choose from the imitation of bronze to wood texture. These products are resistant to chemicals, changes in the atmosphere, and they are easy to maintain.

No less important is that the modern aluminium products are environmentally friendly due to not only good thermal insulation parameters, but also the possibility of remodelling the construction in full.



# Handrailings

The best material for stair handrails and railings depends on the environment of the staircase and the look desired. Metals, like steel, aluminum and wrought iron, are popular choices for commercial and industrial settings and contemporary environments, where wood provides a more classic appearance.

Glass is often used when the view beyond the railing is important. Steel is a popular material for both stair handrails and railings for commercial egress stairs and industrial staircases. Steel is also the best material for stair stringers.

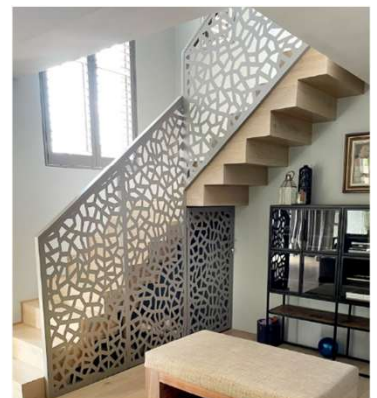
To prevent rusting, galvanized or stainless steel is often used. Galvanized steel is coated with zinc to prevent corrosive materials from damaging the steel below. Chromium, nickel, nitrogen and molybdenum are added to stainless steel to allow the metal to resist corrosion.



# CNC Laser Decor

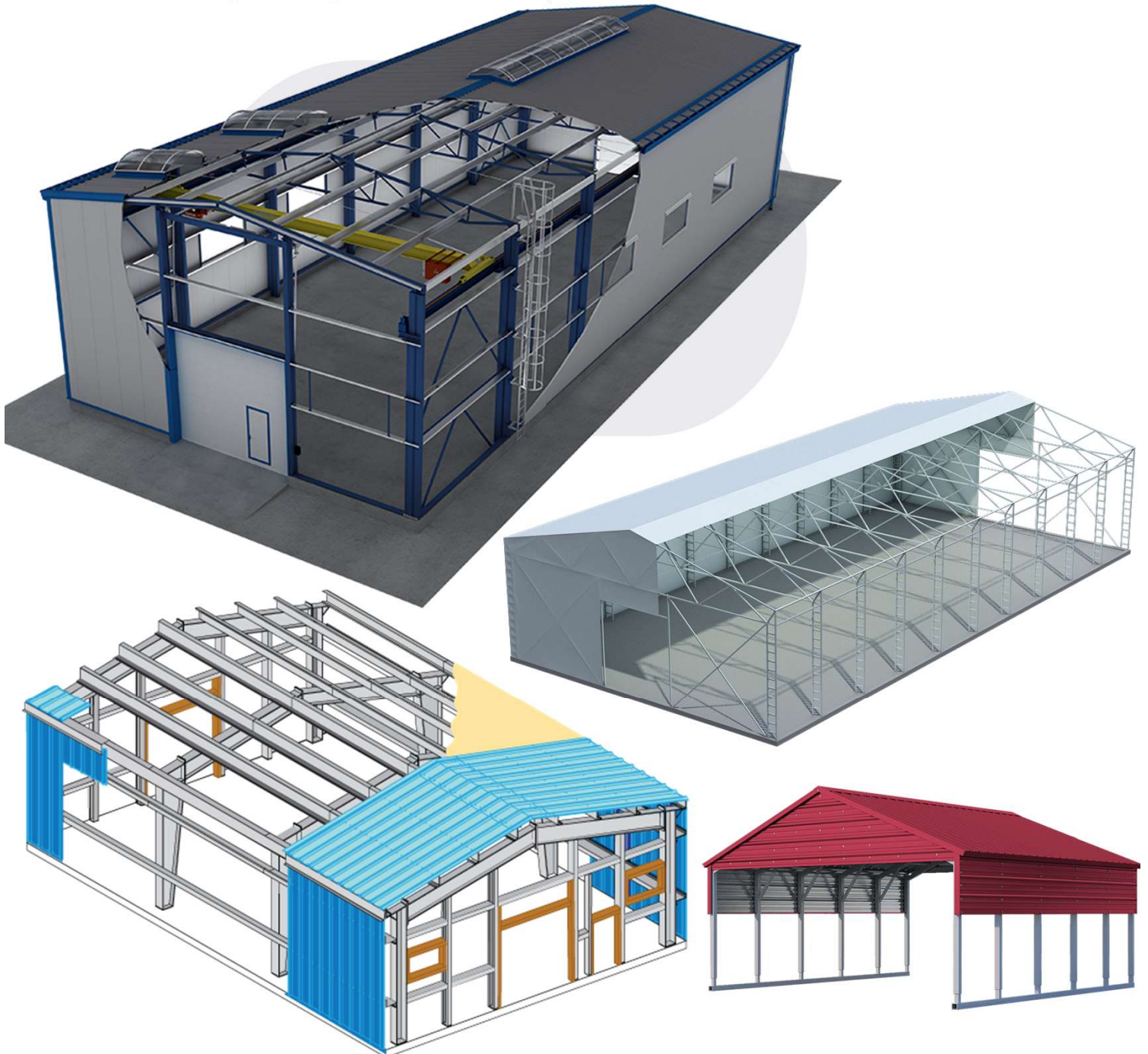
CNC Laser Decorative Windows, Doors, and Walls combine advanced technology with artistic design to enhance both the aesthetic and functional appeal of buildings. Using **Computer Numerical Control (CNC) laser cutting**, intricate patterns and customized designs are precisely cut into materials such as **metal, aluminum, stainless steel**. This process ensures **high accuracy, smooth finishes, and limitless design possibilities**.

These decorative elements are widely used in **modern architecture, interior design, and façade applications**, providing privacy, ventilation, and visual elegance. CNC laser-cut panels are durable, and easy to maintain, making them ideal for both **interior partitions and exterior façades**. They can be customized to match any theme — from traditional Arabic patterns to contemporary geometric designs — offering a perfect blend of **strength, style, and sophistication**.



# Industrial Hanger/Shed

An **Industrial Hanger or Shed** is a custom-engineered steel structure designed to accommodate manufacturing units, workshops, warehouses, and heavy machinery operations. These structures are built to withstand harsh environmental conditions while providing ample space for efficient workflow and storage. They are cost-effective, easy to assemble, and can be tailored to meet specific project requirements such as ventilation, insulation, and load-bearing capacity. Industrial sheds are widely used in sectors like **construction, logistics, aviation, fabrication, and warehousing**, making them a vital component of modern industrial infrastructure.



# Pre-Fabricated Cabins

**Prefabricated products** are building components or structures that are **manufactured in a controlled factory environment** and then **transported to the site for quick assembly**. This modern construction approach ensures **high precision, reduced waste, and faster project completion** compared to traditional on-site construction. Prefabrication allows for better quality control, cost efficiency, and flexibility in design.

These products can include **steel buildings, wall panels, roof trusses, modular cabins, industrial sheds, and portable structures**, all designed to meet specific client needs. Prefabricated solutions are widely used in **industrial, commercial, and residential projects**, providing durable, sustainable, and easily expandable building options for modern infrastructure.

