




EAGLE-i
INSPECTION & ENGINEERING CONSULT

Quality Centered Integrity Checks





FOCUS

A large graphic consisting of two concentric circles. The outer circle is a solid black line. The inner circle is a thick black line with several gaps, where the ends of the line overlap, creating a sense of motion or a continuous cycle.

A need for surety and quality requires an eye for integrity. Eagle-i provides you with all your asset integrity, verification, inspections, safety, and quality engineering. support services.



GUIDING PRINCIPLES

THE VISION ENERGY AND PURPOSEFULNESS OF EAGLE-i ALWAYS PRECEEDS OUR ENTIRE APPROACH TO WORK AT EVERY LEVEL - FROM MANAGEMENT TO OUR TECHNICIANS. OUR PRINCIPLES INSPIRE OUR PERFORMANCE AND GUIDE US ON HOW WE MANAGE OUR OPERATIONS AND HOW WE WORK TOGETHER WITH OUR CLIENTS.

Safety

Regardless of the scale or location of a project, we are committed to safety above all else.

Our employees, partners and clients can be assured that our primary concern in every operation is people's health and wellbeing.

Quality

The primary focus of Eagle-i to our clients is to ensure that equipment, services are properly designed, delivered, installed in accordance with specifications, and remains fit for use until it is retired, this is one of the quality pillars in Eagle-i's delivery.

Environmentally friendly

As environmental inspectors, we are an environmentally friendly company, and we promote environmental sensitivity in every sphere we influence. Through numerous initiatives, we promote environmental care.

Ethical

Ethics are a key part of our business activities. It is an uttermost goal to make Eagle-i receive the recognition for its full commitment to ethical behavior.

Competence

We believe in success and to achieve it, a project needs to have people who have the knowledge, experience and understanding. We achieve this success target, by ensuring that our personnel and consultants are highly qualified and trained to industry standards. We have also instituted a legacy project where we attract some of the best students and develop them through our E-i developmental programs. These measures make our operations efficient as much as possible.

Committed

A project well delivered can only be realized with an inspired team with the motivation and commitment to deliver among to the satisfaction of our clients. We support the freedom of association and acknowledge collective negotiation rights. We do not tolerate discrimination on religion, race, gender, child labor, forced labor or work under duress.

Focus

The success of every service depends on among many of our core values Focus. A great delivery to our client will mean paying a systematic attention to detail. A third eye must ensure that clients do not lose downtime via accidents, product failure and poor service. This is what Eagle-i offers.



LOOKING AHEAD

“THE KEY TO GROWTH IS THE INTRODUCTION OF HIGHER DIMENSIONS OF CONCIUSNESS INTO OUR AWRENESS.” *Lao Tzu*

The Purpose

Our purpose as a 100% local integrity, verification and inspection company is to deliver per the internationally required standards within all the spheres of our operations. Our drive is to always employ the best engineers, technicians and consultants with the requisite certifications and also acquire for our operations the needed permits and certifications and training to aid our team in the delivery of our services with the highest acceptable international standards.

The Mission

Our mission as a third eye is to deliver international standards in inspections locally. We provide this using largely locally trained engineers and consultants. This we believe will save cost and provide our clients with very good return on their investments.

The Vision

Our vision is to become a recognized assets integrity institutions in Africa with all the requisite certifications and capability to deliver internationally. We strive to satisfy all areas of inspection. Where surety is required, we want to make sure it is and Eagle-i providing it.

The Objective

When employed to offer our service within every space, our objective is to run effectively and accurately, whilst protecting the wellbeing of all personnel and equipment as well as the measures in place to assure an asset's life cycle.

Our Personnel & Equipment

These two are the blood and water of a fully certified and integrated inspection work. As a local company, our vision is to invest in equipment and the right personnel in the implementation of our vision. We invest in equipment on quarterly basis and consistently updating our equipment and the knowledge base of our staff on current industry trends. Our legacy project where we attract some of the best students and develop them through our E-i developmental programs is also and integral part of our growth and developmental plan which has a heavy focus on getting women into the inspection space.



OUR SERVICES RANGE

Our diverse range of inspection services provides trusted support to projects, products, services, and processes. Our services provide clients with protection of their assets and interests throughout the entire supply chain process- from procurement to finished goods, plant, and asset maintenance. We offer inspection services to various sectors of economies from Mining, Petrochemical, Pharmaceutical, Oil & Gas, Manufacturing, Agricultural, Construction and Marine.

Inspections help minimize the risk of defective products by ensuring they meet both customer, industry, and internationally recognized standards as well as government regulations. Our support goes beyond acquisition and installation but up into the life management of plant facilities ensuring that our client's assets are operating safely, reliably, and consistently.

QAQC INSPECTION & CERTIFICATION SERVICES

- ✓ WPS-PQR & WPQ
- ✓ DCS PERFORMANCE (COMMISSIONING)
- ✓ WQTS
- ✓ Production Planning & Control
- ✓ Project Management
- ✓ Quality Assurance & Control
- ✓ Corrosion Control/Asset Integrity
- ✓ Process Excellence
- ✓ Stakeholder Management
- ✓ Reporting & Documentation
- ✓ Welding Inspection
- ✓ TPI
- ✓ Mechanical Works/Installation
- ✓ UNDERWATER INSPECTIONS
- ✓ INTEGRITY EVALUATIONS
- ✓ BRIDGE INSPECTIONS
- ✓ OVERHEAD CRANE INSPECTIONS
- ✓ VALVE INSPECTIONS
- ✓ PUMP INSPECTIONS
- ✓ BOILER INSPECTIONS
- ✓ PLANT INSPECTIONS
- ✓ CABLE DETECTION & INSPECTION
- ✓ EVERYTHING INSPECTION

NDT SERVICES

- ✓ ULTRASONIC THICKNESS TESTING
- ✓ STORAGE TANK INSPECTION, AUDIT & CALIBRATION
- ✓ RADIOGRAPHIC INSPECTION
- ✓ MAGNETIC PARTICLE INSPECTION
- ✓ OCTG INSPECTIONS
- ✓ HARDNESS TESTS
- ✓ PMI TESTS
- ✓ LIFTING EQUIPMENT INSPECTIONS
- ✓ LIQUID PENETRANT INSPECTIONS
- ✓ THICKNESS INSPECTIONS
- ✓ VISUAL INSPECTIONS (VT)
- ✓ PENETRANT TESTING (PT)
- ✓ VACUUM BOX TESTING (VBT)
- ✓ HOLIDAY TESTS
- ✓ BORESCOPE INSPECTION
- ✓ CORROSION, COATINGS, LININGS TESTING & INSPECTIONS
- ✓ PIPELINE INSPECTIONS
- ✓ VARIOUSE TANKS, PIPES & STRUCTURAL INTEGRITY INSPECTIONS, SURVEYS AND CALIBRATIONS



OPS GALLERY





OPS GALLERY

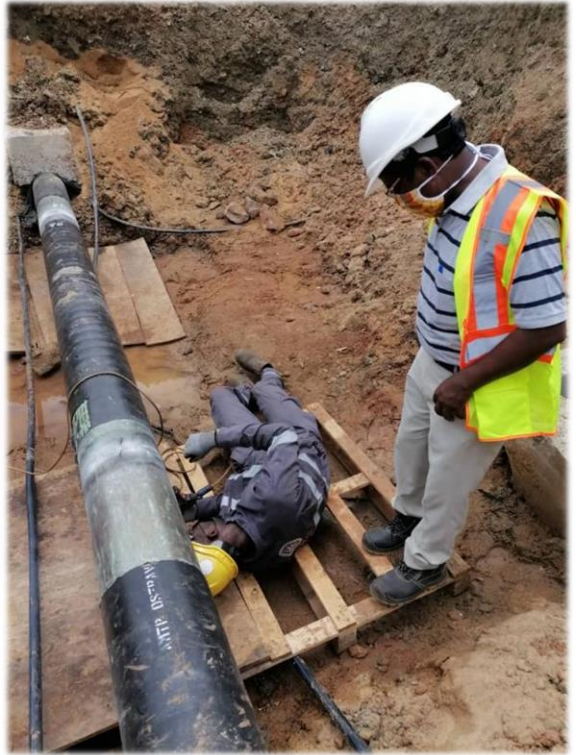


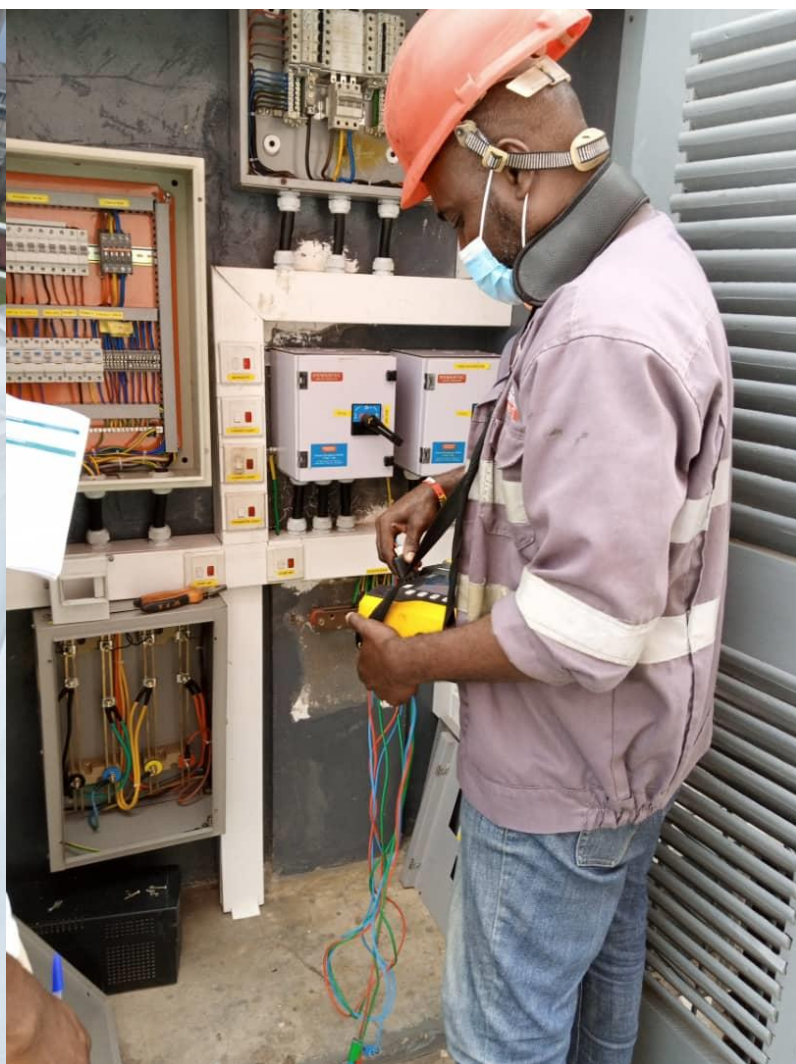


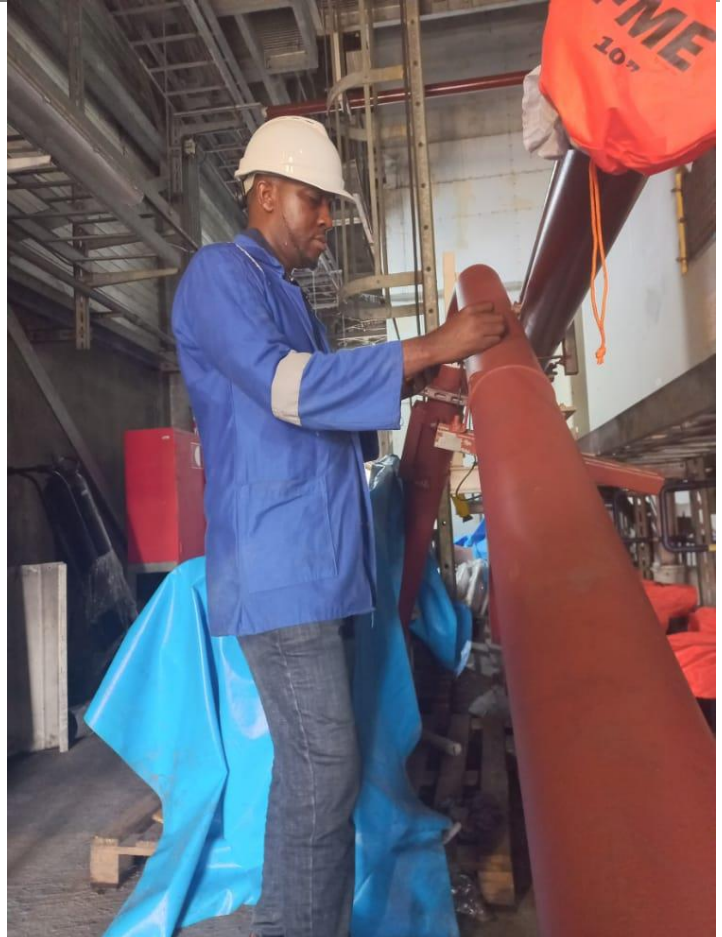
OPS GALLERY



OPS GALLERY









EAGLE-i

INSPECTION & ENGINEERING CONSULT





OPS GALLERY





OPS GALLERY





PROCESS

Ensuring the safety and peace of a client requires the implementation of an integrity processes in a well-structured and concise manner abiding by all the required internationally accepted principles and internally laid down processes in the delivery of our service.

We believe that integrity management services require intelligent attention to detail and compliance to processes and rules using the right technology, tools and personnel.



Challenge yourself



TEAM PROFILE

Founder and The Eagle-i for Administrative Operations



Bridge Adams Eshun

Certified Construction Manager (MBA)

Working Experience | 20+ Years

Abilities

Entrepreneur with dynamic ability to operate in various industries

Business Journey

Founder and managing partner for 3+ companies

Skills

- Author
- Public Speaker
- Networker
- Tech enthusiast
- Motivational Speaker

Social Business

National Director - Business Network International (BNI) Ghana

Achievements

- Author: How to Start a Business with or without Money
- Franchisee and Founder of BNI Ghana

Challenge yourself



TEAM PROFILE

Co-Founder and The Eagle-i for Technical Operations



David Imuetinyan Eka

Certified QA/QC & Welding Inspector

Working Experience | 15 Years

Worked on Projects Valued Over | \$320M

Certifications

MSc in Oil and Gas with Energy Management | University Of East London

Post Graduate Diploma in Project Management

B.Sc. (Chemistry) from University of Uyo

GIPM- Charter Project Manager (0212355)

GIPM - Proficiency in Facility Management (0212355)

Proficiency in Primavera P6 and MS Project

Certified Welding Inspector (Cert. No: 19052511)

CWB CSA W178.2 Level II Welding Inspection

Positive Material Identification (PMI)

Lead Auditor for ISO 9001:2015

BOSIET

Offshore Safety Permit (DPR-OSP)

ASNT SNT-TC-1A Level II Certificate holder in:

- Ultrasonic Testing (UT)
- Magnetic Particle Inspection (MPI)
- Radiographic Film Interpretation (RFI)
- Penetrant Testing (PT)
- Visual Testing (VT)

Professional Affiliations

AWS member (Membership No.: 750576)

Associate Member Global Institute of Project Managers (0212355)

Skills

Interpretation of international codes such as ASME II, V, VIII, IX, B31.3, B31.4, AWS D1.1, API 1104, ASTM, ISO

AutoCAD

MS Project, Word, Excel etc

Primavera P6

Challenge yourself



TEAM PROFILE

The Eagle-i for QA/QC/Asset Integrity Inspections



Paul Ogala

Certified inspection and QA/QC engineer

Working Experience | 15+ Years

Worked on Projects Valued Over | \$200M+

Paul is a dynamic, analytical and process driven inspection engineer and QA/QC engineer combined with substantial working experience overseeing work activities safely and qualitatively at various locations in the oil and gas industry especially in subsea equipment, pressure vessels, piping, pipeline, pig traps & risers, tanks and structural steel works like Jackets, Decks/Platforms, Riser Guards, Pile.

Certifications

- # University of Port Harcourt, B.ENG Mechanical
- # AWS Certified Welding Inspector (CWI) Certificate No. 11042251
- # API 653 Certified, Certificate No.: 95868
- # API 570 Certified, Certificate No.: 45992
- # Quality Management System (QMS) ISO 9001:2015
- # ASNT Level II Certificate in Magnetic Particle Testing (MPT)
- # ASNT Level II Certificate in Ultrasonic Testing (UT)
- # ASNT Level II Certificate in Radiographic Film Interpretation (RFI)
- # People Readiness in (First Aid) Intervention by Saipem Contracting Nigeria Limited
- # TIMS Tank & Vessel Awareness Training Session by SPDC.
- # Radiation Safety Awareness Training By TOTAL E & P Nigeria
- # Electrical Risks on Construction Sites By APAVE Nigeria Limited
- # Safety During Work at Height and Scaffolding Related Risks
- # Industrial Gases Risk Prevention on Construction Sites By TOTAL Energies
- # Training on Confined Space by Saipem Contracting Nigeria Limited.

Skills

- # QA/QC management system implementation
- # Construction site quality standardization
- # Inspections (weld, materials, &NDT) audit, testing, assembly, disassembly, maintenance, reporting and project documentation
- # Construction & Contract supervision/management
- # Quality observations and Leadership skills
- # Computer knowledge (MS Word, Excel & Auto Cad)
- # Problem identification & resolution
- # Pro-active and creative thinking

Challenge yourself



TEAM PROFILE

The Eagle-i for QAQC Welding Inspections



Levi Chukwudi. T

Certified Welding Inspector to CSWIP 3.1, QA/QC on Welding and NDT, Construction, and Fabrication Professional, expert in executing Oil, Gas and Energy Projects, Cross-Country Pipelines

Working Experience | 14+ Years

Certifications

- # TWI-UK CSWIP 3.1(Level 2) Certified Welding Inspector Reg No-#681973.
- # ASNT-NDT Level 2 (Non-Destructive Testing) Certified-RFI, UT, ECT, MT, PT, and VT.
- # Rope Access (IRATA) L1, No #1/195955.
- # Nigeria Institute of Safety Professionals (NISP LEVEL 1&2).
- # FOET-Further Offshore Emergency Training.
- # NIMASA STCW Mandatory / Seaman's Record book and certificate of Discharge.
- # CA-EBS-Compressed Air Emergency Breathing System (Total Energies).
- # Accident/Incident Investigation, Reporting and Analysis.
- # Use of FIVE (5) WHY Method in Root Cause Analysis.
- # Work Management System (WMS) and electronic Permit to Work System (ExxonMobil).
- # Work Team Lead Training (Chevron Nigeria Limited).

Skills

- # Cross country Pipe Line Construction.
- # Teamwork & ability to adapt and respond to change.
- # Swamp Flow Lines and Sub-sea Riser and Pipe laying.
- # Calculating Dimensions & Interpreting sketches.
- # Head Eye Coordination & Close Vision.
- # Setting Up Machine tools & Lifting devices.
- # Non-Destructive Testing & Evaluation
- # Effective Communication & Attentive Listening,
- # Adept in welding Techniques in construction industry.
- # Lifting Considerable weights.
- # Time/schedule Management.
- # Physical Abilities & Endurance.
- # Observation.
- # Multitask.
- # Report writing & Documenting work
- # General Safety Management

Professional Affiliations & Licenses

- # Member, Nigerian Society of Engineers MNSE, Certificate No #57011.
- # Council for The Regulation of Engineering in Nigeria (COREN) R.54,887.
- # Offshore Safety permit OSP -Issued by DPR Permit No- #0168881.
- # Member-Council for regulation of Engineering in Nigeria Registered (COREN).
- # Member -Nigerian Society of Engineers (MNSE).
- # Member-The Welding Institute, United Kingdom-UK

Challenge yourself



TEAM PROFILE

The Eagle-i for Rope Access NDT Inspections



Yusuf Momodu

CERTIFIED NDE INSPECTOR, ROPE ACCESS & NDT INSPECTOR AND ASSET INTEGRITY AND RELIABILITY EXPERT

Working Experience | 10+ Years

Yusuf is an Inspector with specialty in conducting various NDT Inspections - PT, MPI, RT, UT, VT and Eddy Current on materials/equipment and familiar with major NDE international codes, standards, and welding codes. Also, a highly equipped IRATA Level II Rope Access Technician with vast knowledge in Emergency Response (ER), Rescue and major hauling manoeuvres.

Certifications

- # Certified IRATA Level II Rope Access Technician (IRATA No.: 2/149914), 2022
- # Confined Space Entry, CSE- NLNG, Bonny (ID: 10569), 2021
- # Security & Criminal Background Check, SBC/CBC, BLUE PEARL KONSULT LTD, 2021
- # Certified Level II Eddy Current Inspector ET, SNT-TC-1A2016, ASNT., 2021
- # Compressed Air Emergency Breathing System, CA-EBS, CNL, Agbami., 2021
- # DPR Offshores Safety Permit, OSP (ID:195165-Renewed), 2021
- # Certified Level II Non-Destructive Testing, NDT Inspector-PT, UT, MPI, RT & VT. SNT-TC-1A-2011, ASNT., 2019
- # Certified IRATA Level 1 Rope Access Technician, RAT. (Irata No: 1/149914), 2019
- # Basic Offshore Safety Induction Emergency Training, BOSIET with Emergency Breathing System, EBS OPITO approved course-code: 5700, 2019
- # Job Hazard Analysis and Risk management
- # Lock out/ Tag out (LOTO), Confined Space Entry (CSE), Respiratory Protective Equipment, Nigeria Institute of Safety Professionals
- # Basic and advanced firefighting course

Skills

- | | |
|-----------------------------|-------------------------|
| # Extensive Computer Skills | # Effective Team Lead |
| # Adaptability | # Highly Motivated |
| # Creative Thinking | # Dedicated team player |
| # Fast Learner | |

Professional Affiliations & Licenses

- # Member, Nigerian Society of Engineers MNSE

Challenge yourself



TEAM PROFILE

The Eagle-i for Welding Inspections



Edem Anobeja Pius

CERTIFIED QAQC ENGINEER

Working Experience | 10+ Years
No. High projects worked on 30+

Certifications

- # B.Eng. Electrical/Electronic Eng. Cross River University of Technology Calabar
- # QMS ISO 9001: 2015 (Lead Auditor)
- # Survival at Sea (SAS)/ Helicopter Underwater Escape Training (HUET) Cert No: ONL/CHENOTECH/SAS/HUET/97
- # Non-Destructive Testing (NDT) DPI, MPI, RFI and UT
- # Certified Welding Inspector (CWI) (AWS) Cert No: 1511449
- # Proficiency Certificate in Management, (NIM) Membership No: 195883
- # Certificate of Supervisor (Level 3) Health Safety and Environment (HSE)

Skills

- # Dimensional instrument for quality control (eg. Calipers, Gauge Meters etc.)
- # Knowledge of protective coating and identification of external corrosion or damage mechanisms by visual inspection.
- # Strategic planning and Client relationship cultivation.
- # Instinct for quality, thoroughness and details.
- # High personal integrity
- # Result-driven, logical and detailed approach to achieving tasks and objectives.
- # Analytical research and organizational ability.
- # Good interpersonal relation and communication skills.
- # Internet proficient and conversant with the use of Microsoft Office Suite.
- # Good documentation skills.
- # Working knowledge of API 1104, AWS D 1.1, BS-EN codes, DNV codes ASME codes and standard, etc.
- # Good working knowledge of Exxon Mobil GP specification.
- # Good working knowledge of ISO 9001:2015

Professional Affiliations & Licenses

- # Member, Nigerian Society of Engineers MNSE

Challenge yourself



TEAM PROFILE

The Eagle-i for Survey Engineering



Ige Oluwasesan

CERTIFIED SENIOR SURVERY ENGINEER

Working Experience | 8+ Years

A certified, analytical and driven lead surveyor skilled at performing accurate field survey, operating various professional equipment's and tools including surveying software program, developing detailed sketches for design of future project with AutoCAD.

Analyzing maps and other documents, providing solution to any mechanical, electrical, meteorological, mining and hydrographic facilities or elements positioning and also to identify structural damage and make recommendation for repairs, inspection of project for insurance and advising on relevant legal requirements, energy efficiency and environmental impact by working closely with construction professionals to solve any design error to avoid establishment wrong horizontal and vertical profile positioning of project facilities/ materials.

Certifications

- # Higher National Diploma in survey
- # QMS ISO 9001: 2015 (Lead Auditor)
- # Certificate of Supervisor (Level 3) Health Safety and Environment (HSE)

Skills

- # Operations management
- # Landscaping,
- # Blueprint reading
- # Evolving, construction
- # CAD
- # Equipment operator (total station, robotic equipment, DGPS, GPS, Echosounder, drone).
- # Dimensional instrument for quality control (eg. Calipers, Gauge Meters etc.)
- # Strategic planning and Client relationship cultivation.
- # Instinct for quality, thoroughness and details.
- # High personal integrity
- # Result-driven, logical and detailed approach to achieving tasks and objectives.
- # Analytical research and organizational ability.
- # Internet proficient and conversant with the use of Microsoft Office Suite.

Challenge yourself



The Eagle-i for Painting Inspections



Osajie Gilbert Ehikioya

NACE CERTIFIED, ASNT LEVEL 11 (UT, VT, PT, MPI & RFI), TROPICAL HUET, DPR OSP

Working Experience | 12+ Years

No. High projects worked on 30+

Certifications

- # HND Electrical/Electronic Engr. (Instrumentation and Control Option)
- # OND Electrical/Electronic Engineering
- # Certificate in AUTOCAD
- # NACE Certified Coating Inspection Level 1 (CIP LEVEL 1)
- # NACE Certified Coating Inspection Level 2 (CIP LEVEL 2)
- # TROPICAL HUET (Tropical helicopter underwater escape training with survival at sea)
- # Fire Extinguisher Training
- # Water Survival and Swing Rope Training
- # Microsoft Word, Microsoft Excel, Microsoft Project
- # AutoCAD 2000,2004 and 2007

Skills

- # Team Player
- # Knowledge of protective coating and identification of external corrosion or damage mechanisms by visual inspection.
- # Strategic planning and Client relationship cultivation.
- # Instinct for quality, thoroughness and details.
- # High personal integrity
- # Result-driven, logical and detailed approach to achieving tasks and objectives.
- # Analytical research and organizational ability.
- # Good interpersonal relation and communication skills.
- # Internet proficient and conversant with the use of Microsoft Office Suite.
- # Good documentation skills.

Professional Affiliations & Licenses

- # CIP 2 number; 26081
- # NACE membership number; 292138

Completed Projects

Client	Project Name
SELECTED Projects undertaking by our team of engineers	
A-Z Petroleum Nigeria Limited (Lagos)	<ul style="list-style-type: none"> ○ Pipeline integrity inspection ○ Diesel storage tank integrity inspection
Century Group (Kidney Island, Port Harcourt)	<ul style="list-style-type: none"> ○ Nitrogen Purging and Helium Leak Detection ○ Agbami GTC Train 2 emergency repair works
Makon Engineering and Technical Services & Shell Petroleum Development Company	<ul style="list-style-type: none"> ○ Manufacturing of closed drain vessel for "Agbada NAG" (Domgas Project)
MAKON/SPDC	<ul style="list-style-type: none"> ○ EB-14 Flow line to EB-11 Manifold Flow line Connection ○ BC-1 Day light Tank (300 Gallon ARB/Overhead) ○ AOS-14H To AOS-01 2" Gaslift Line Connection. ○ TMMP Boat Landing ○ New Gaslift Bypass line from N04 Gaslift to N04 Flow lines in M26 ○ Revamp spool fabrication ○ Cellar deck extension ○ Nor-10 modification spools ○ Replacement of pad eye on oil spill boom ○ Fabrication of stairways, handrails and walkways ○ Leaking spool fabrication and replacement ○ Njaba vent header vessel ○ 12" ADN-ADNA topside fabrication and installation (FODE)
Total Energies	<ul style="list-style-type: none"> ○ QAQC Inspection on OML 13 T & I Crude Evacuation Pipeline & Platform Project
Indexpro Int'l Services Limited, Port Harcourt, Nigeria	<ul style="list-style-type: none"> ○ QAQC & Inspections on Kwale Gas Flare Down Project (Mechanical Works – Equipment, Piping and Structural Installations) ○ QAQC & Inspections on 18.5km Akri Gas Recovery Pipeline Project (Kwale in-plant) – A 24" Pipelin
LPRC Liberia	<ul style="list-style-type: none"> ○ 3rd party tank inspections: Tank Calibrations, hydro tests, Vacuum box inspections and QAQC Infrastructure audits.
BEA Mountain Mining	<ul style="list-style-type: none"> ○ TILT/Foundation Verification Survey
Blue Projects	<ul style="list-style-type: none"> ○ NDT works on various SS pipelines
Upfield Ghana Limited	<ul style="list-style-type: none"> ○ NDT Inspections, Pressure testing and Tank Verification survey
ECT.	



EAGLE-i

INSPECTION & ENGINEERING CONSULT

CONTACT DETAILS

COLINDALE COURT NO. 12 BIRCH STREET COMMUNITY 12 TEMA-GHANA

EMAIL | CONTACT@EAGLEIAFRICA.COM

WEB ADDRESS | www.eagleiafrica.com



GHANA OPERATIONAL LINE | +233.55.0000.550

NIGERIA OPERATIONAL LINE | +234.806.332.3586