

TW!STi

Performance & Design on Woven Vinyl Flooring

RUMBA



Caribbean Sea

Ref: 8027H



Cuban Cigar

Ref: 8083H



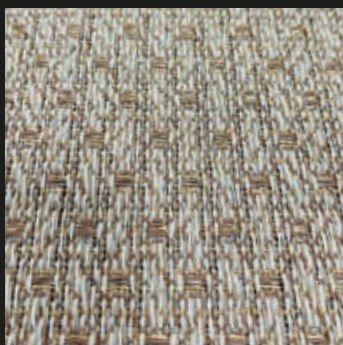
Havana

Ref: 8030



Sugar Cane

Ref: 8029H1

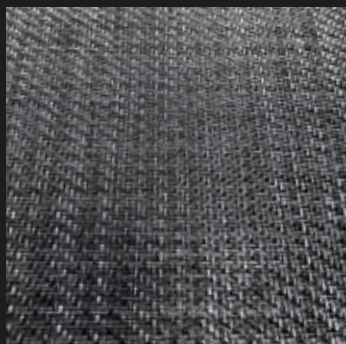


Varadero

Ref: 8029



SHINING



Shooting Star

Ref: 22028



Silverado

Ref: 8084H



Oyster Shell

Ref: 8090H



ESSENTIAL



Ash Grey
Ref: 8056H



Blue Marine
Ref: BM001



Desert Ripples
Ref: 8020



Fashion Brown
Ref: 8089H



Stylish Black
Ref: 8099H



Urban Grey
Ref: 8012H



SOUTHEAST ASIA



Bali Grey
Ref: 21068



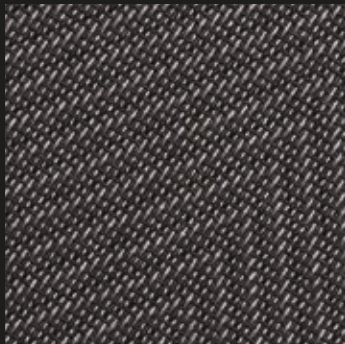
Melaka Beige
Ref: 22016



Molucas Grey
Ref: 22014



FISHBONE



Black Fish
Ref: 21004



Champagne
Ref: 21010



Floral Brown
Ref: 8008



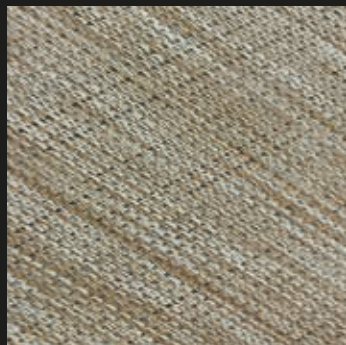
Red Sea
Ref: 8023



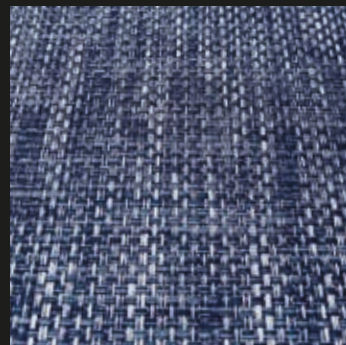
EAST AFRICA



Mombasa
Ref: 21018



Zanzibar
Ref: 22011



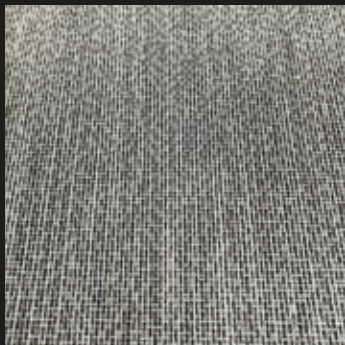
Atlantic Blue
Ref: 44024



Skeleton Coast
Ref: 44055



SOFT



Soft Grey
Ref: 8117



White Sand
Ref: 8095



BARCODE

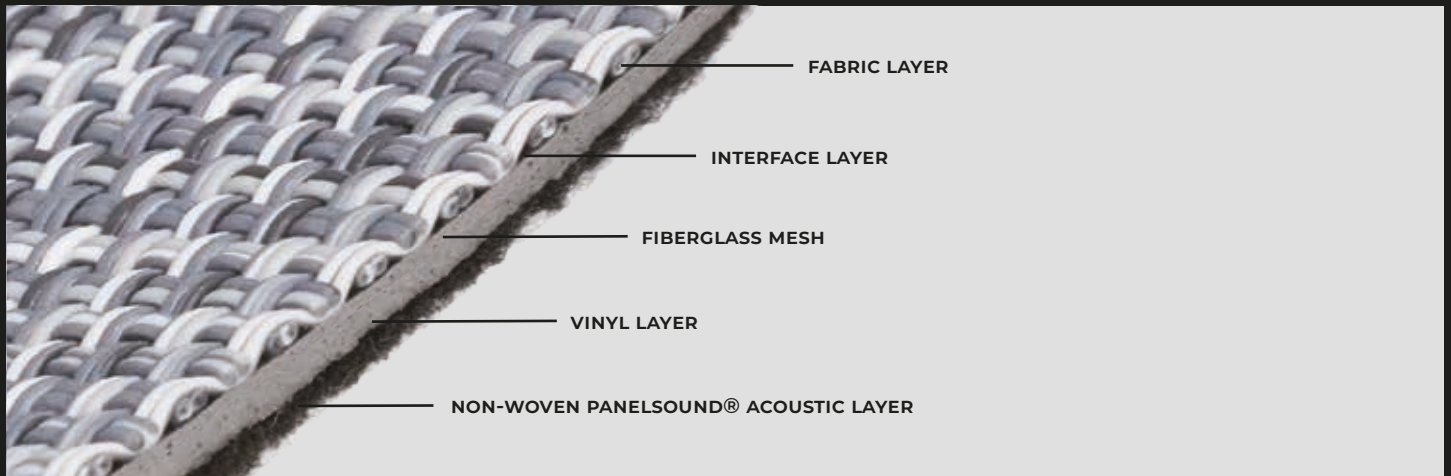


Soft Lines
Ref: 21030



TWISTI - PERFORMANCE & DESIGN ON WOVEN VINYL FLOORING


















- Twisti is an **European Brand** designed by a team **with over 20 years of experience** in the woven vinyl flooring market.
- With **the best technical performance and combined with the best design**, Twisti conveys comfort and exclusivity to the most diverse types of projects.
- Rated as Class 33, Twisti it is suitable for heavy commercial use.
- Thanks to its composition and acoustic felt - PanelSound layer, **Twisti is at the top of its category in terms of reducing sound impact by up to 20dB** and reducing noise from pedestrian traffic by up to 70%
- Although it must be mounted by a professional, Twisti is easy to install and maintain.
- Twisti is available in 500 x 500 mm tiles and 2 meters x 20 meters rolls.



TECHNICAL FEATURES

Material Designation: Woven Vinyl Flooring

Composição: Finishing Woven Vinyl top layer
Interface layer
Dimension stability fiberglass layer
Vinyl support layer
Acoustic PET Felt PanelSound® layer

TECHNICAL INFORMATION		ROLLS & TILES
Classification	EN 685	Class 33, heavy commercial use
 Weight	ISO 8543	± 3,5 Kg/m²
 Thickness	ISO 1765	3,50 - 4,20 mm
 Roll Length	EN 426	20 m *
 Roll Width	EN 426	2 m
 Tile Dimension	EN 994	500 x 500 mm
 Dimension Stability	ISO 2551	< 0,25%
 Curvature	EN 434	< 2 mm
 Caster Chair	EN 985	Continuous use
 Body Voltage	ISO 1815	≤ 2,0KV
 Thermal Resistance	ISO 8302	Suitable for underfloor heating
 Color fastness to light	ISO 105-802	> 6
 Anti-slip property	EN 13893	> 0,3
 Reaction to Fire	EN 13501-1	Bfl-s1
 Impact Sound Reduction	ISO 10140	Up to 20 dB
 Walking Noise Reduction	EPLF 0210 29-3	Up to 70%
 Acoustical absorption	ISO 354	a _w = 0,15
Smoke Density	ASTM E662	< 450
REACH test	1907/2006	NO. (6614)008-1228-R2
 CE Certification	EN 14041 EN 15114	NO. EC. 1282.OA140305.AYD0738
ISO 9001 Certification	ISO 9001:2008	NO. 04514Q20096R0S
ISO 14001 Certification	ISO 14001:2004	NO. 04514E20029R0S

From different production batches, there may occur differences on the color tone of the material. For a same area it is recommended to use material from the same production batch. These differences are not a reason for a complaint and not accepted as a claim or covered by our warranty.

TWISTI final product is obtained by weaving technique, the absolute perpendicularity on the weaving vinyl flooring does not exist, so warps on the pattern are possible to occur, also small flaws in the weave are possible, from the nature of the material production and not accepted as a claim. These occurrences give the authentic appearance of a textile product.

NOTES:

* Rolls with a maximum length of 20 m. For production reasons, they may be supplied in shorter lengths.