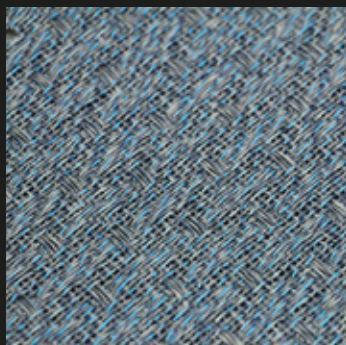


# TW!STi

Performance & Design on Woven Vinyl Flooring

# RUMBA



**Caribbean Sea**

Ref: 8027H



**Cuban Cigar**

Ref: 8083H



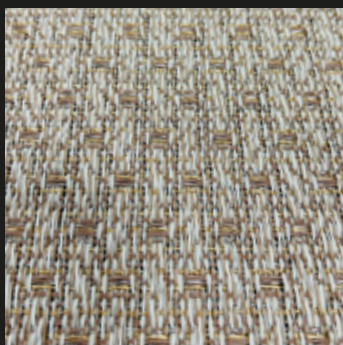
**Havana**

Ref: 8030



**Sugar Cane**

Ref: 8029H1



**Varadero**

Ref: 8029



# SHINING



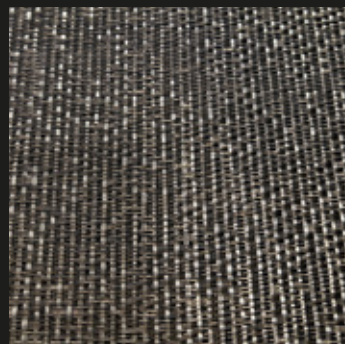
**Shooting Star**

Ref: 22028



**Silverado**

Ref: 8084H



**Oyster Shell**

Ref: 8090H



# ESSENCIAL



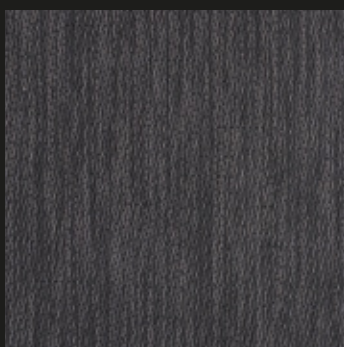
**Ash Grey**  
Ref: 8056H



**Desert Ripples**  
Ref: 8020



**Fashion Brown**  
Ref: 8089H



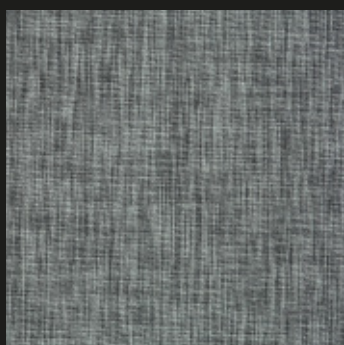
**Stylish Black**  
Ref: 8099H



**Urban Grey**  
Ref: 8012H



# SOUTHEAST ASIA



**Bali Grey**  
Ref: 21068



**Melaka Beige**  
Ref: 22016

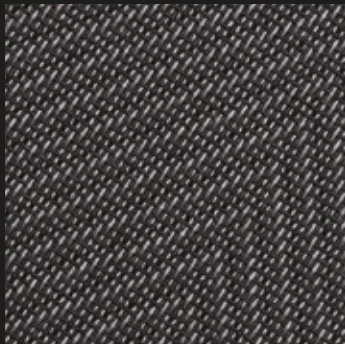


**Molucas Grey**  
Ref: 22014





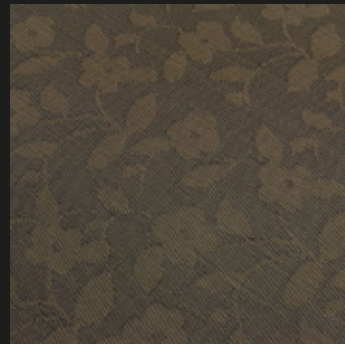
## FISHBONE



**Black Fish**  
Ref: 21004



**Champagne**  
Ref: 21010



**Floral Brown**  
Ref: 8008



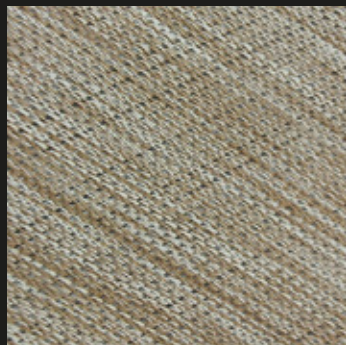
**Red Sea**  
Ref: 8023



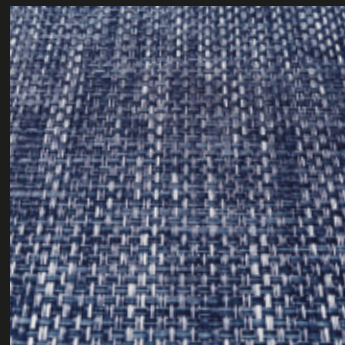
## EAST AFRICA



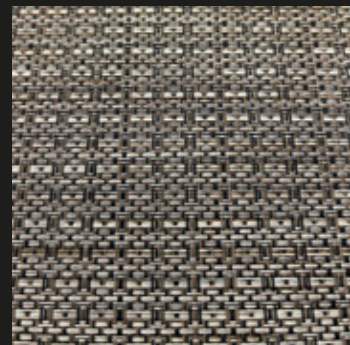
**Mombasa**  
Ref: 21018



**Zanzibar**  
Ref: 22011



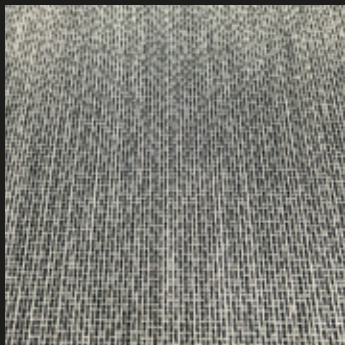
**Atlantic Blue**  
Ref: 44024



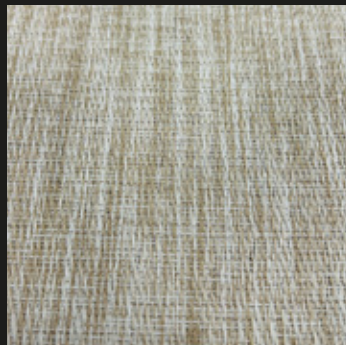
**Skeleton Coast**  
Ref: 44055



## SOFT



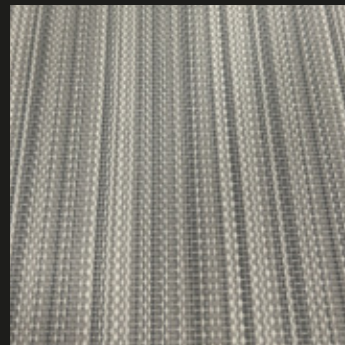
**Soft Grey**  
Ref: 8117



**White Sand**  
Ref: 8095



## BARCODE



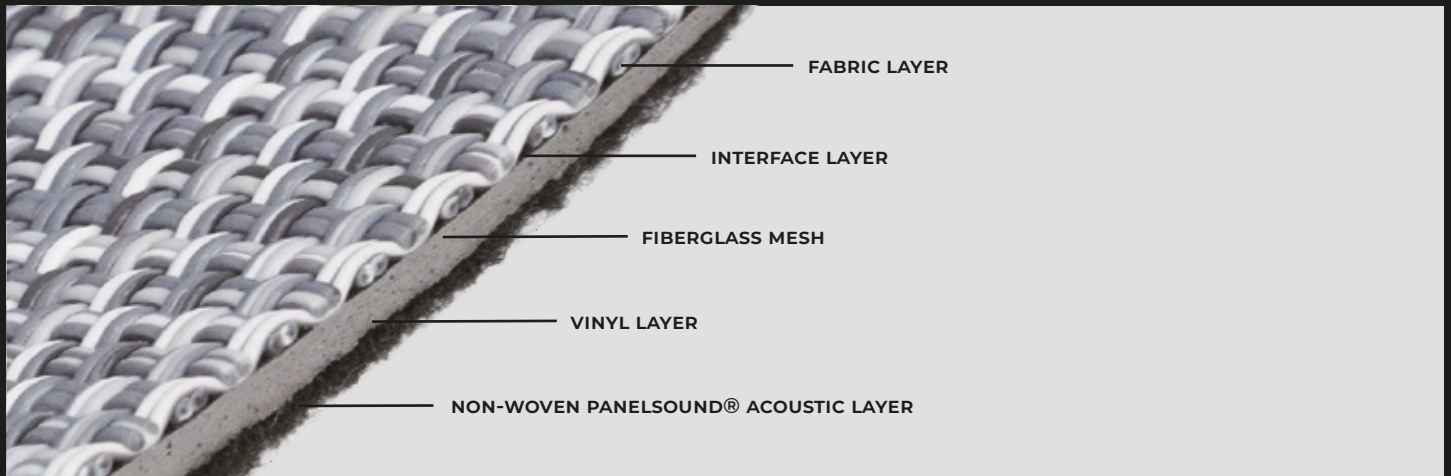
**Soft Lines**  
Ref: 21030





# TWISTI - PERFORMANCE & DESIGN ON WOVEN VINYL FLOORING

















- Twisti is an **European Brand** designed by a team **with over 20 years of experience** in the woven vinyl flooring market.
- With **the best technical performance and combined with the best design**, Twisti conveys comfort and exclusivity to the most diverse types of projects.
- Rated as Class 33, Twisti it is suitable for heavy commercial use.
- Thanks to its composition and acoustic felt - PanelSound layer, **Twisti is at the top of its category in terms of reducing sound impact by up to 20dB** and reducing noise from pedestrian traffic by up to 70%
- Although it must be mounted by a professional, Twisti is easy to install and maintain.
- Twisti is available in 500x500 mm tiles and 2 meters x 25 meters rolls.



# TECHNICAL FEATURES

**Material Designation:** Woven Vinyl Flooring

**Composição:** Finishing Woven Vinyl top layer  
Interface layer  
Dimension stability fiberglass layer  
Vinyl support layer  
Acoustic PET Felt PanelSound® layer

TECHNICAL INFORMATION		ROLLS & TILES
Classification	EN 685	Class 33, heavy commercial use
 Weight	ISO 8543	± 3,5 Kg/m2
 Thickness	ISO 1765	3,50 - 4,20 mm
 Roll Length	EN 426	20 m / 25 m
 Roll Width	EN 426	2 m
 Tile Dimension	EN 994	500 x 500 mm
 Dimension Stability	ISO 2551	< 0,25%
 Curvature	EN 434	< 2 mm
 Caster Chair	EN 985	Continuous use
 Body Voltage	ISO 1815	≤ 2,0KV
 Thermal Resistance	ISO 8302	Suitable for underfloor heating
 Color fastness to light	ISO 105-802	> 6
 Anti-slip property	EN 13893	> 0,3
 Reaction to Fire	EN 13501-1	Bfl-s1
 Impact Sound Reduction	ISO 10140	Up to 20 dB
 Walking Noise Reduction	EPLF 0210 29-3	Up to 70%
Smoke Density	ASTM E662	< 450
REACH test	1907/2006	NO. (6614)008-1228-R2
 CE Certification	EN 14041   EN 15114	NO. EC. 1282.OA140305.AYD0738
ISO 9001 Certification	ISO 9001:2008	NO. 04514Q20096R0S
ISO 14001 Certification	ISO 14001:2004	NO. 04514E20029R0S

From different production batches, there may occur differences on the color tone of the material. For a same area it is recommended to use material from the same production batch.

TWISTI final product is obtained by weaving technique, the absolute perpendicularity on the weaving vinyl flooring does not exist, so warps on the pattern are possible to occur, are from the nature of the material production and not accepted as a claim. These occurrences give the authentic appearance of a textile product.