

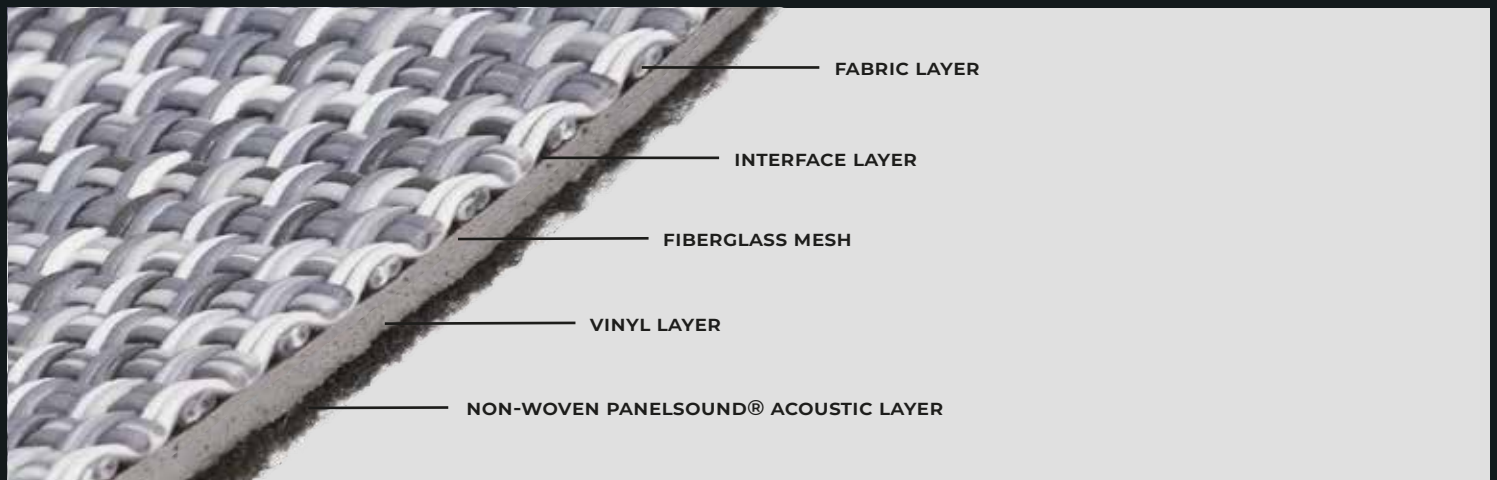
# TW!STi

Performance & Design on Woven Vinyl Flooring

[www.twisti.net](http://www.twisti.net)

# TWISTI - PERFORMANCE & DESIGN ON WOVEN VINYL FLOORING

- Twisti is an **European Brand** designed by a team **with over 20 years of experience** in the woven vinyl flooring market.
- **With the best technical performance and combined with the best design**, Twisti conveys comfort and exclusivity to the most diverse types of projects.
- Twisti is an **eco-conscious product**.
- Twisti reaches an extraordinary value with respect to the reuse of recycled material, **superior to 50% of the total composition**.
- Rated as Class 33, Twisti it is suitable for heavy commercial use.
- Thanks to its composition and acoustic felt - PanelSound layer, **Twisti is at the top of its category in terms of reducing sound impact by up to 20dB** and reducing noise from pedestrian traffic by up to 70%.
- Although it must be mounted by a professional, Twisti is easy to install and maintain.
- Twisti is available in 500 x 500 mm tiles and 2 meters x 20 meters rolls.





## VOLUME 01 — TILES & ROLLS



**Caribbean Sea**

Ref: 8027H

*Rumba Collection*



**Cuban Cigar**

Ref: 8083H

*Rumba Collection*



**Havana**

Ref: 8030

*Rumba Collection*



**Sugar Cane**

Ref: 8029H1

*Rumba Collection*



**Varadero**

Ref: 8029

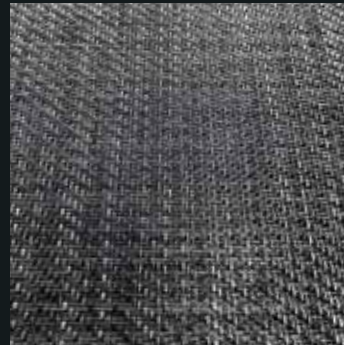
*Rumba Collection*



**Oyster Shell**

Ref: 8090H

*Shining Collection*



**Shooting Star**

Ref: 22028

*Shining Collection*



**Silverado**

Ref: 8084H

*Shining Collection*



**Ash Grey**

Ref: 8056H

*Essential Collection*



**Blue Marine**

Ref: BM001

*Essential Collection*



**Desert Ripples**

Ref: 8020

*Essential Collection*



**Fashion Brown**

Ref: 8089H

*Essential Collection*



**Stylish Black**

Ref: 8099H

*Essential Collection*



**Urban Grey**

Ref: 8012H

*Essential Collection*



**Soft Grey**

Ref: 8117

*Soft Collection*



**White Sand**

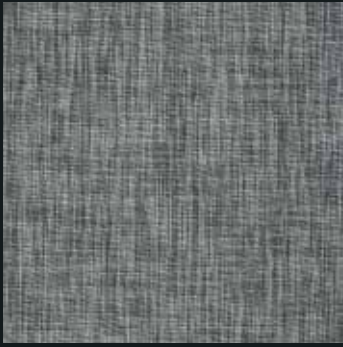
Ref: 8095

*Soft Collection*





## VOLUME 01 — TILES & ROLLS



**Bali Grey**

Ref: 21068

*Southeast Asia Collection*



**Melaka Beige**

Ref: 22016

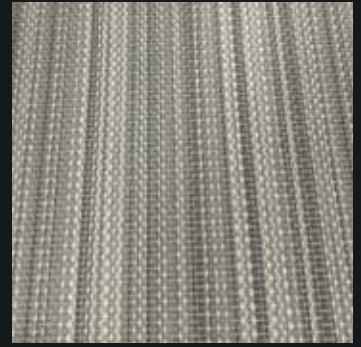
*Southeast Asia Collection*



**Molucas Grey**

Ref: 22014

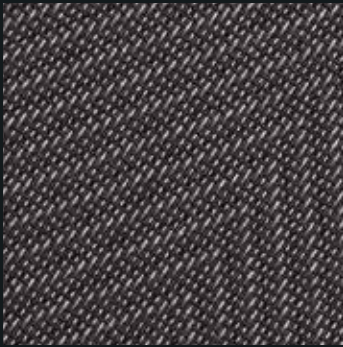
*Southeast Asia Collection*



**Soft Lines**

Ref: 21030

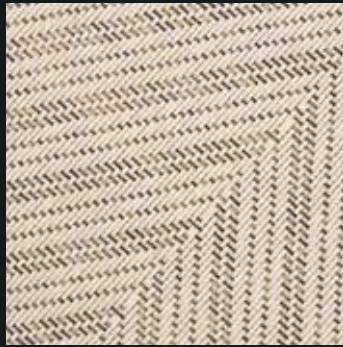
*Barcode Collection*



**Black Fish**

Ref: 21004

*Fishbone Collection*



**Champagne**

Ref: 21010

*Fishbone Collection*



**Floral Brown**

Ref: 8008

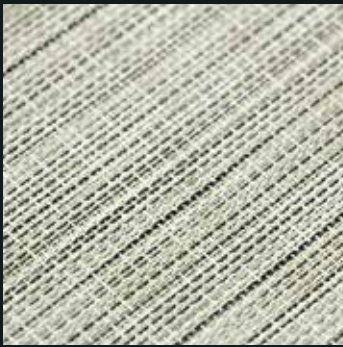
*Fantasy Collection*



**Red Sea**

Ref: 8023

*Fantasy Collection*



**Mombasa**

Ref: 21018

*East Africa Collection*



**Zanzibar**

Ref: 22011

*East Africa Collection*



**Atlantic Blue**

Ref: 44024

*West Africa Collection*



**Skeleton Coast**

Ref: 44055

*West Africa Collection*





## VOLUME 02 — TILES & ROLLS



**Antelope**

Ref: SK11

*Skin Collection*



**Grey Wolf**

Ref: SK04

*Skin Collection*



**Hare**

Ref: SK02

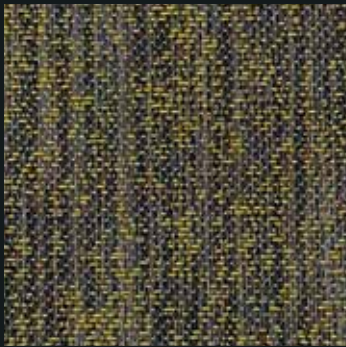
*Skin Collection*



**Hippo**

Ref: SK06

*Skin Collection*



**Iguana**

Ref: SK09

*Skin Collection*



**Komodo**

Ref: SK08

*Skin Collection*



**Atacama**

Ref: OB69

*South America Collection*



**Machu Picchu**

Ref: JA94

*South America Collection*



**Balearic Sea**

Ref: FG29

*Sea Collection*



**Coral Sea**

Ref: FG01

*Sea Collection*





## VOLUME 03 — THE ONLY TILES COLLECTION \*



**Cappuccino**

Ref: 1222

*Timeless Collection*



**Concrete Grey**

Ref: 13018

*Timeless Collection*



**Deep Black**

Ref: 13019

*Timeless Collection*



**Dune**

Ref: 1011

*Timeless Collection*



**Lava**

Ref: 14050

*Timeless Collection*



**Nuts**

Ref: 16020

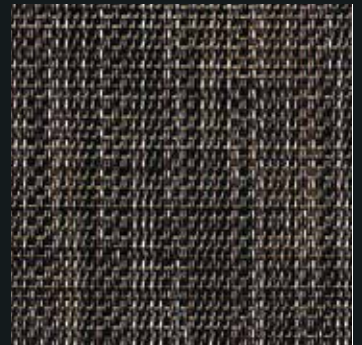
*Timeless Collection*



**Starry Night**

Ref: 1041

*Timeless Collection*



**Bukhara**

Ref: 19041

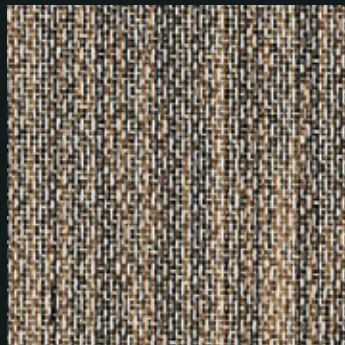
*Silk Road Collection*



**Constantinopla**

Ref: 19092

*Silk Road Collection*



**Samarkanda**

Ref: 17035-1

*Silk Road Collection*



**Xian**

Ref: 19091

*Silk Road Collection*



**Black Pepper**

Ref: 18003

*Spice Collection*



**Curry**

Ref: 18006

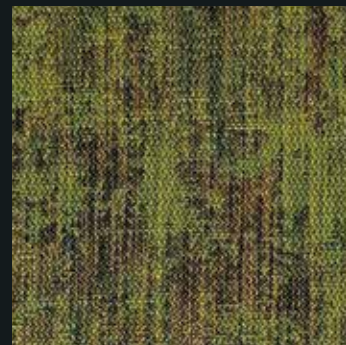
*Spice Collection*



**Ginger**

Ref: 18002

*Spice Collection*



**Mint**

Ref: 18007

*Spice Collection*



**Paprika**

Ref: 18001

*Spice Collection*





## VOLUME 03 — THE ONLY TILES COLLECTION \*



**Blue Sky**

Ref: 17017

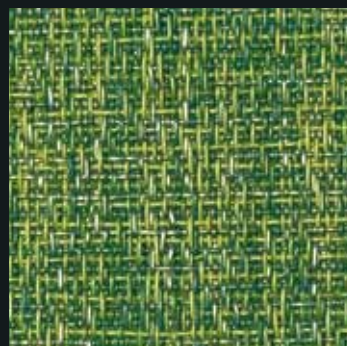
*Color Vibe Collection*



**Coconuts**

Ref: 14023

*Color Vibe Collection*



**Lime**

Ref: 17015

*Color Vibe Collection*



**Orangina**

Ref: 17014

*Color Vibe Collection*



**Tea Leaf**

Ref: 0915

*Color Vibe Collection*



**Vineyard**

Ref: 17019

*Color Vibe Collection*



**Crow**

Ref: 19027

*Feather Collection*



**Dove**

Ref: 19025

*Feather Collection*



**Brut**

Ref: 19100

*Sparkling Collection*



**Dry**

Ref: 25010

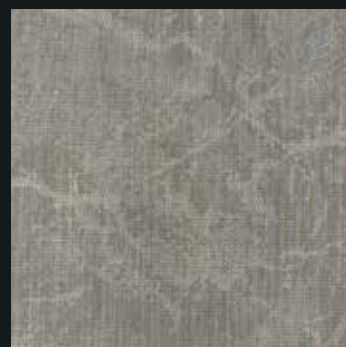
*Sparkling Collection*



**Sweet Grey**

Ref: 22013

*Sparkling Collection*



**Whitish**

Ref: 25002

*Splash Collection*




















\* Available in rolls under request.

# TECHNICAL FEATURES

**Material Designation:** Woven Vinyl Flooring

**Composition:** Finishing Woven Vinyl top layer ; Interface layer ; Dimension stability fiberglass layer ; Vinyl support layer ; Acoustic PET Felt PanelSound® layer

Technical Features		Rolls & Tiles
Classification	EN 685	Class 33, heavy commercial use
 Weight	ISO 8543	± 3,5 Kg/m²
 Thickness	ISO 1765	3,50 - 4,20 mm
 Roll Length	EN 426	20 m *
 Roll Width	EN 426	2 m
 Tile Dimension	EN 994	500 x 500 mm
 Dimension Stability	ISO 2551	< 0,25%
 Curvature	EN 434	< 2 mm
 Caster Chair	EN 985	Continuous use
 Body Voltage	ISO 1815	≤ 2,0KV
 Thermal Resistance	ISO 8302	Suitable for underfloor heating
 Color fastness to light	ISO 105-802	> 6
 Anti-slip property	EN 13893	> 0,3
 Reaction to Fire	EN 13501-1	Bfl-s1
 Impact Sound Reduction	ISO 10140	Up to 20 dB
 Walking Noise Reduction	EPLF 0210 29-3	Up to 70%
 Acoustical absorption	ISO 354	a <sub>w</sub> =0,15
Smoke Density	ASTM E662	< 450
REACH test	1907/2006	NO. (6614)008-1228-R2
Formaldehyde emission	EN 717-1:2004	E1
VOC	EN 16516	A+
 CE Certification	EN 14041   EN 15114	NO. EC. 1282.OA140305.AYD0738
ISO 9001 Certification	ISO 9001:2008	NO. 04514Q20096R0S
ISO 14001 Certification	ISO 14001:2004	NO. 04514E20029R0S

From different production batches, there may occur differences on the color tone of the material. For a same area it is recommended to use material from the same production batch. These differences are not a reason for a complaint and not accepted as a claim or covered by our warranty.

TWISTI final product is obtained by weaving technique, the absolute perpendicularity on the weaving vinyl flooring does not exist, so warps on the pattern are possible to occur, also small flaws in the weave are possible from the nature of the material production and not accepted as a claim. These occurrences give the authentic appearance of a textile product.

NOTES:  
\* Rolls with a maximum length of 20 m. For production reasons, they may be supplied in shorter lengths.