



Spare parts catalogue
XEF 250 TRAIL E5 MY23-MY24 UK

Index

0 - Models (XEF 250 TRAIL E5 MY21-MY22)	4
1 - Telaio	5
2 - Swingarm (XEF 250 TRAIL E5 MY21-MY22)	7
3 - Front fork	10
4 - Front wheel (XEF 250 TRAIL E5 MY21-MY22)	12
5 - Rear Wheel (XEF 250 TRAIL E5 MY21-MY22)	14
6 - Radiator (XEF 250 TRAIL E5 MY21-MY22)	16
7 - Fuel tank (XEF 250 TRAIL E5 MY21-MY22)	18
Aspiration/Engine	21
9 - Exhaust (XEF 250 TRAIL E5 MY21-MY22)	24
10 - Handlebar/Controls (XEF 250 TRAIL E5 MY21-MY22)	26
11 - Braking System (XEF 250 TRAIL E5 MY21-MY22)	28
Front Bodywork	30
Rear Bodywork	33
Impianto elettrico	35
15 - Decals	38
16 - Head (XEF 250 TRAIL E5 MY21-MY22)	40
17 - Cylinder (XEF 250 TRAIL E5 MY21-MY22)	42
18 - Valves (XEF 250 TRAIL E5 MY21-MY22)	44
19 - Covers carter RH (XEF 250 TRAIL E5 MY21-MY22)	46
20 - Covers carter LH (XEF 250 TRAIL E5 MY21-MY22)	48
21 - Clutch (XEF 250 TRAIL E5 MY21-MY22)	50
22 - Oil Pump (XEF 250 TRAIL E5 MY21-MY22)	52
23 - Carter LH (XEF 250 TRAIL E5 MY21-MY22)	54
24 - Carter RH (XEF 250 TRAIL E5 MY21-MY22)	56
25 - Crankshaft (XEF 250 TRAIL E5 MY21-MY22)	58
26 - Gear shift (XEF 250 TRAIL E5 MY21-MY22)	60
27 - Shift control (XEF 250 TRAIL E5 MY21-MY22)	62
28 - Flywheel (XEF 250 TRAIL E5 MY21-MY22)	64
29 - Starting Motor (XEF 250 TRAIL E5 MY21-MY22)	66

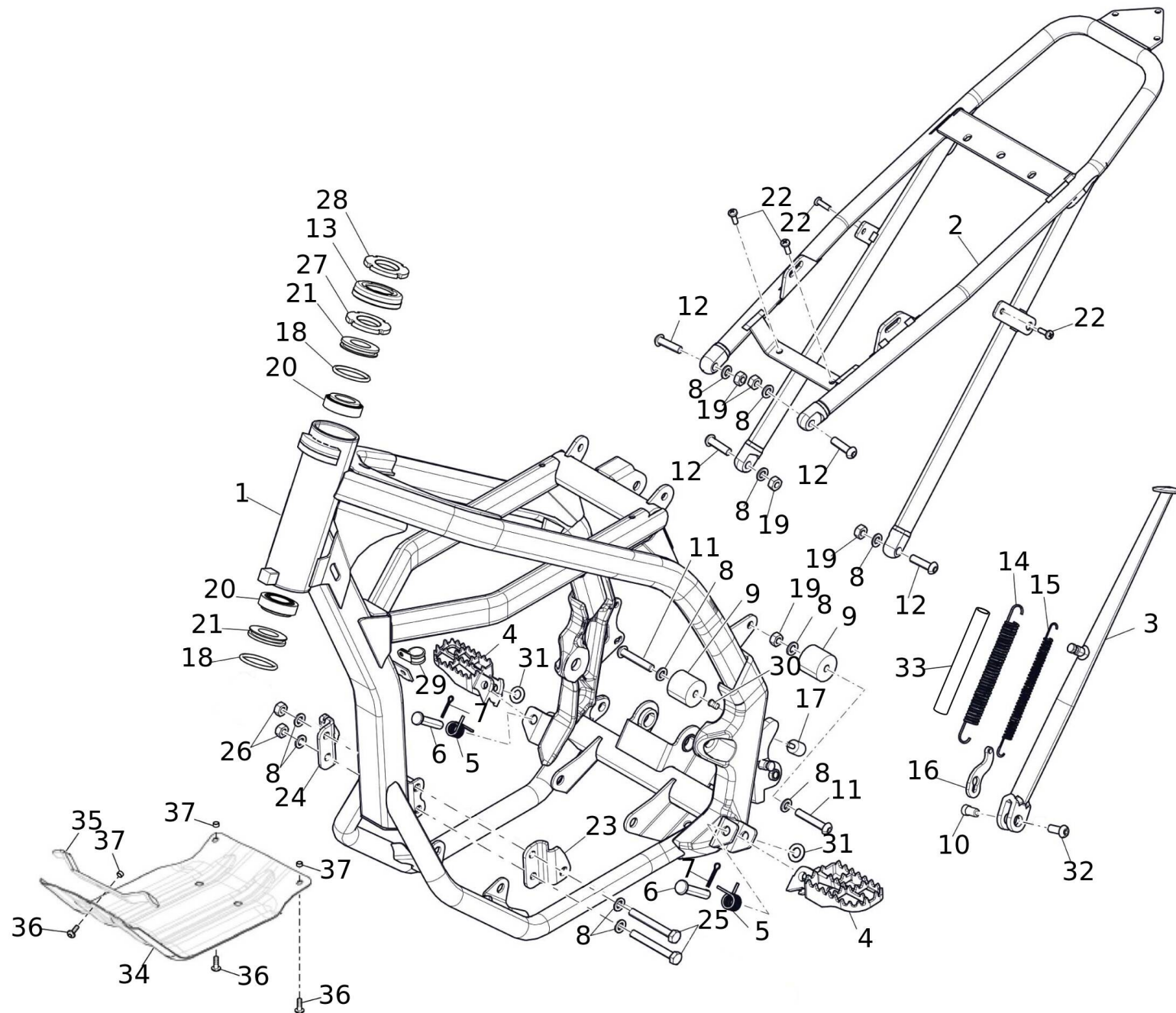
100 - Suggested Spare Parts Trail	68
101 - Suggested Spare Parts Trail	70



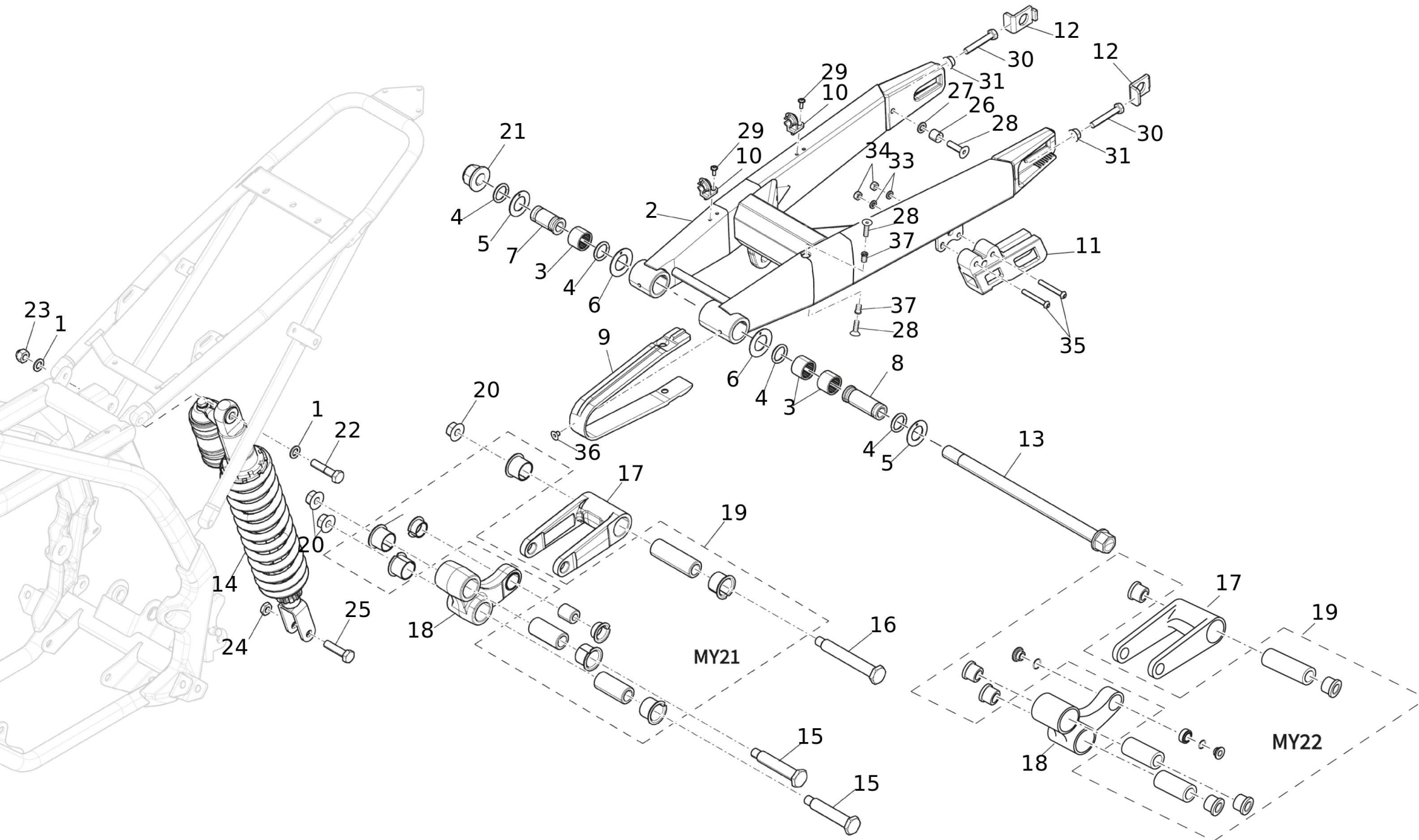
XEF 250 TRAIL
White



XEF 250 TRAIL
Black



#	Code	Description	Specification	UM	Qty
1	06543001	FRAME		pz	1
2	09530005	REAR FRAME		pz	1
3	05342005	SIDE STAND ENDURO		pz	1
4	00008005	FOOTBOARDS		pz	1
5	00010005	SPRING FOOTBOARD 50 + 4T		pz	2
6	00322005	PIN-FAST FOOTBOARDS		pz	2
7	00323005	SPLIT PIN FOOTBOARDS		pz	2
8	00060005	WASHER M8 UNI 6592		pz	12
9	01855005	ROLLER RED		pz	2
10	06483005	KICKSTAND BUSHING TL250		pz	1
11	00039005	SCREW-SOCKET CONVEX HEAD 8X45		pz	2
12	09984005	SCREW 8X20 FLANG UNI 7380 CL10.9		pz	4
13	05366005	GASKET		pz	1
14	02284005	EXTERNAL SIDE STAND SPRING		pz	1
15	02283005	INTERNAL SIDE STAND SPRING		pz	1
16	06534005	PLATE		pz	1
17	04117005	ANTIVIBRATING RUBBER 15X15 M5		pz	1
18	00007005	O RING 144		pz	2
19	00583005	NUT-LOCK 8 LOW		pz	1
20	00247005	PLATE BEARING CASA E/M		pz	2
21	00082005	SWINGARM PLATE WATER GUARD DISC		pz	2
22	04203005	SCREW 5X16		pz	4
23	04027002	PLATE		pz	1
24	04075002	PLATE		pz	1
25	04098005	SCREW-HEXAGONAL HEAD 8x65		pz	2
26	00067005	NUT-LOCK 8		pz	2
27	05365005	RING		pz	1
28	00646005	RING NUT M 25x1		pz	1
29	00301005	CABLE GUIDE		pz	1
30	04149005	RIVET-SCREW 8		pz	1
31	08821005	WASHER M10 UNI 6592 SP.1mm		pz	2
32	00051005	SCREW-SOCKET CONVEX HEAD 8X20		pz	1
33	08134005	PIPE		pz	1
34	04140005	CUP GUARD		pz	1
35	04141005	SUPPORT		pz	1
36	02540005	SCREW-SOCKET CONVEX HEAD 6X16		pz	3
37	00803005	SPACER TURN INDICATOR SUPPORT		pz	3



2 - Swingarm (XEF 250 TRAIL E5 MY21-MY22)

2_XEF_250_TRAIL_MY21

#	Code	Description	Specification	UM	Qty
1	00341005	WASHER 10		pz	2
2	04036002	SWINGARM		pz	1
3	04559005	SWINGARM BEARING CAB HK2220-2RS		pz	3
4	04095005	O RING SWINGING FORK TL250		pz	4
5	07754005	BUSH		pz	2
6	04346005	BUSH		pz	2
	07767005	BUSH		pz	2
7	04038005	BUSHING		pz	1
8	04086005	BUSHING		pz	1
9	01857005	CHAIN GUIDE RED		pz	1
	V0961005	RED CHAIN ??EYE MY24		pz	1
10	01879005	CABLE GUIDE		pz	2
11	01856005	CHAIN SLIDER RED		pz	1
12	08413005	CHAIN TENSIONER		pz	2
13	05340005	PIN		pz	1
14	05012005	SHOCK ABSORBER FANTIC FRS 250/4T		pz	1
15	01387005	PIN	MY21	pz	2
	08820005	PIN		pz	2
15	08820005	PIN	MY22	pz	2
16	00940005	LINKAGE PIN (ON SWINGARM)		pz	1
17	05099005	DOUBLE LINKAGE		pz	1
18	05100005	TRIPLE LINKAGE	MY21	pz	1
18	08120005	TRIPLE LINKAGE MY21	MY22	pz	1
19	02057005	KIT REVISIONE GRUPPO LEVERAGGIO	MY21	pz	1
19	09646005	REVISION KIT DIRECTION MY22	MY22	pz	1
20	01390005	FLANGED NUT FOR LEVER PINS		pz	3
21	00004005	SWINGARM PIN NUT		pz	1
22	00054005	SCREW M10x45		pz	1
23	00280005	NUT M10 SELF-BLOCKING		pz	1
24	00061005	SELF-BLOCKING NUT M10 LOW		pz	1
25	08640005	SCREW		pz	1
26	04904005	POV LOCKING		pz	1
27	00060005	WASHER M8 UNI 6592		pz	1
28	02243005	SCREW 8x430 TE UNI 5933		pz	3
29	03012005	SCREW-SOCKET CONVEX HEAD 4X12		pz	2
30	00055005	SCREW-HEXAGONAL HEAD 8X50		pz	2
31	00063005	NUT-STOP 8 FLANGED		pz	2
32	01534005	SCREW-SOCKET CONVEX HEAD 6X45		pz	1
33	00807005	WASHER 6X12		pz	2
34	00064005	NUT-LOCK 6 LOW		pz	2
35	01534005	SCREW-SOCKET CONVEX HEAD 6X45		pz	2
36	01253005	SCREW FLATHEAD 6X8		pz	1
37	05367005	RIVET		pz	2

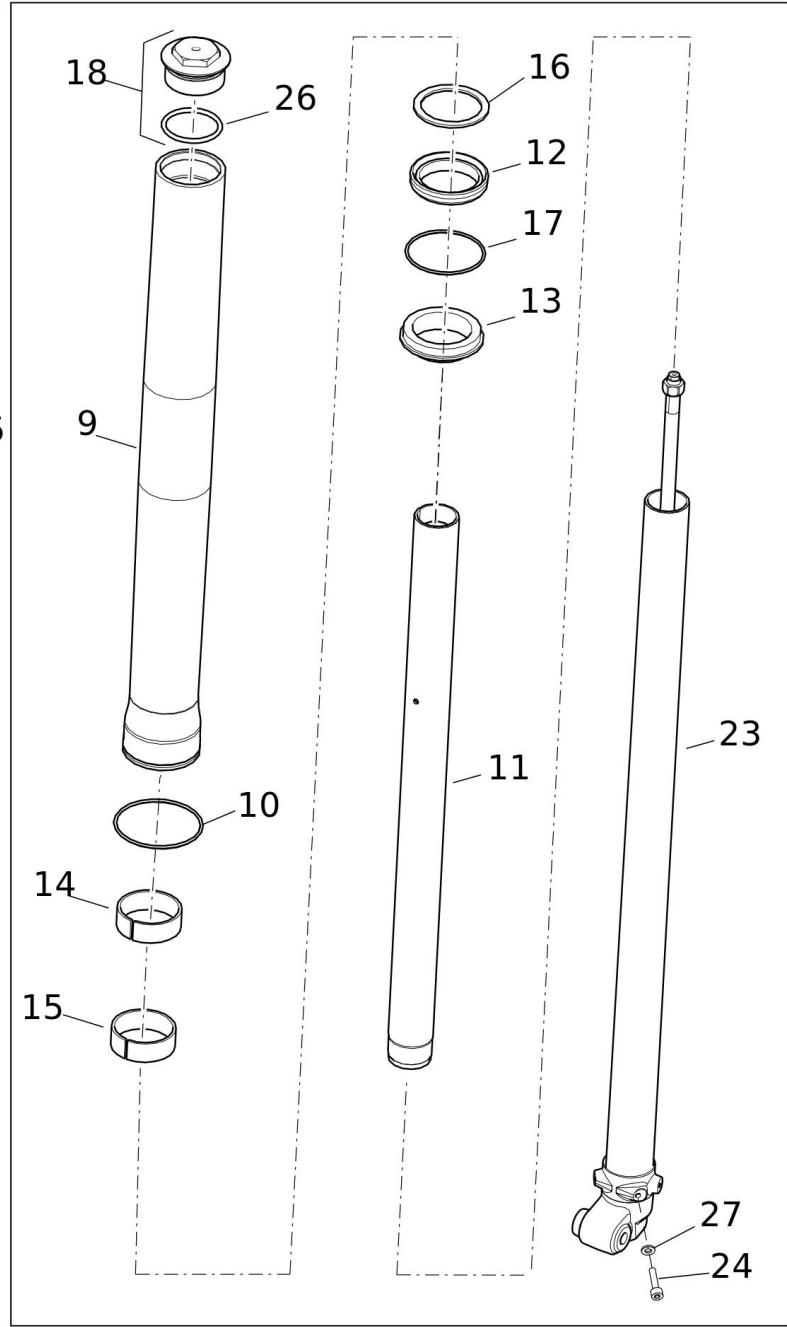
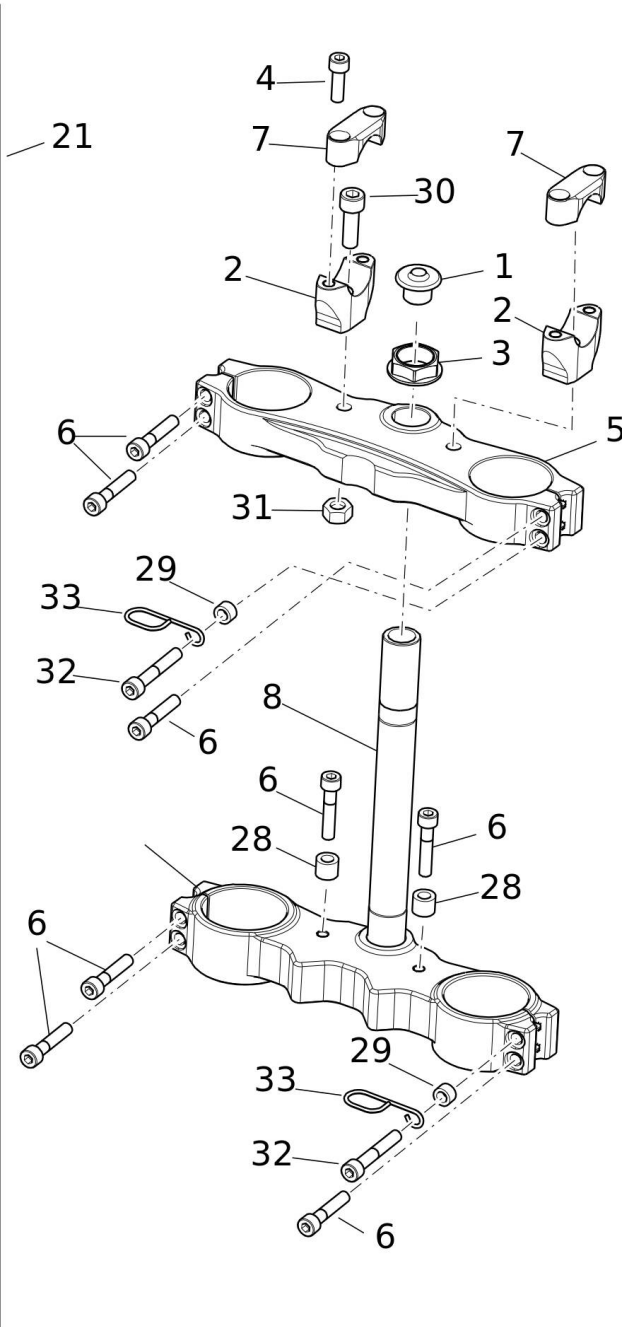
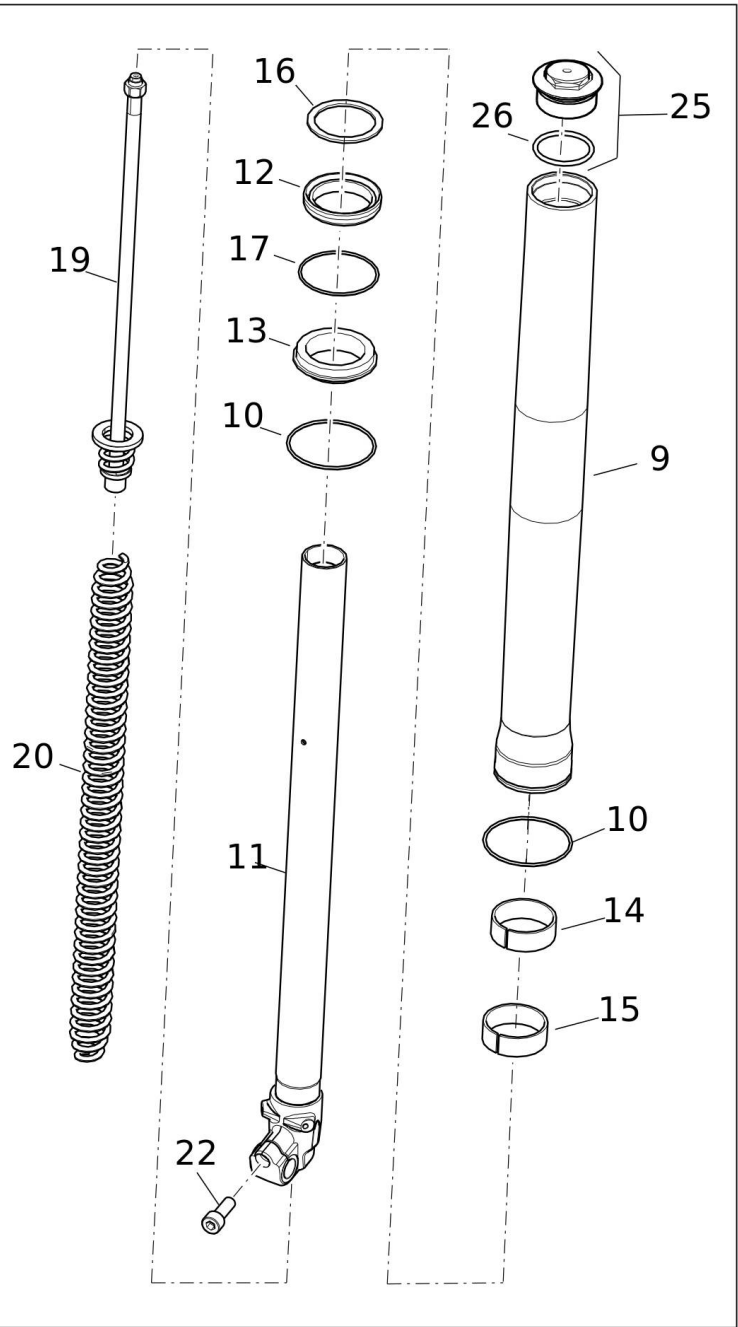


#	Code	Description	Specification	UM	Qty
---	------	-------------	---------------	----	-----



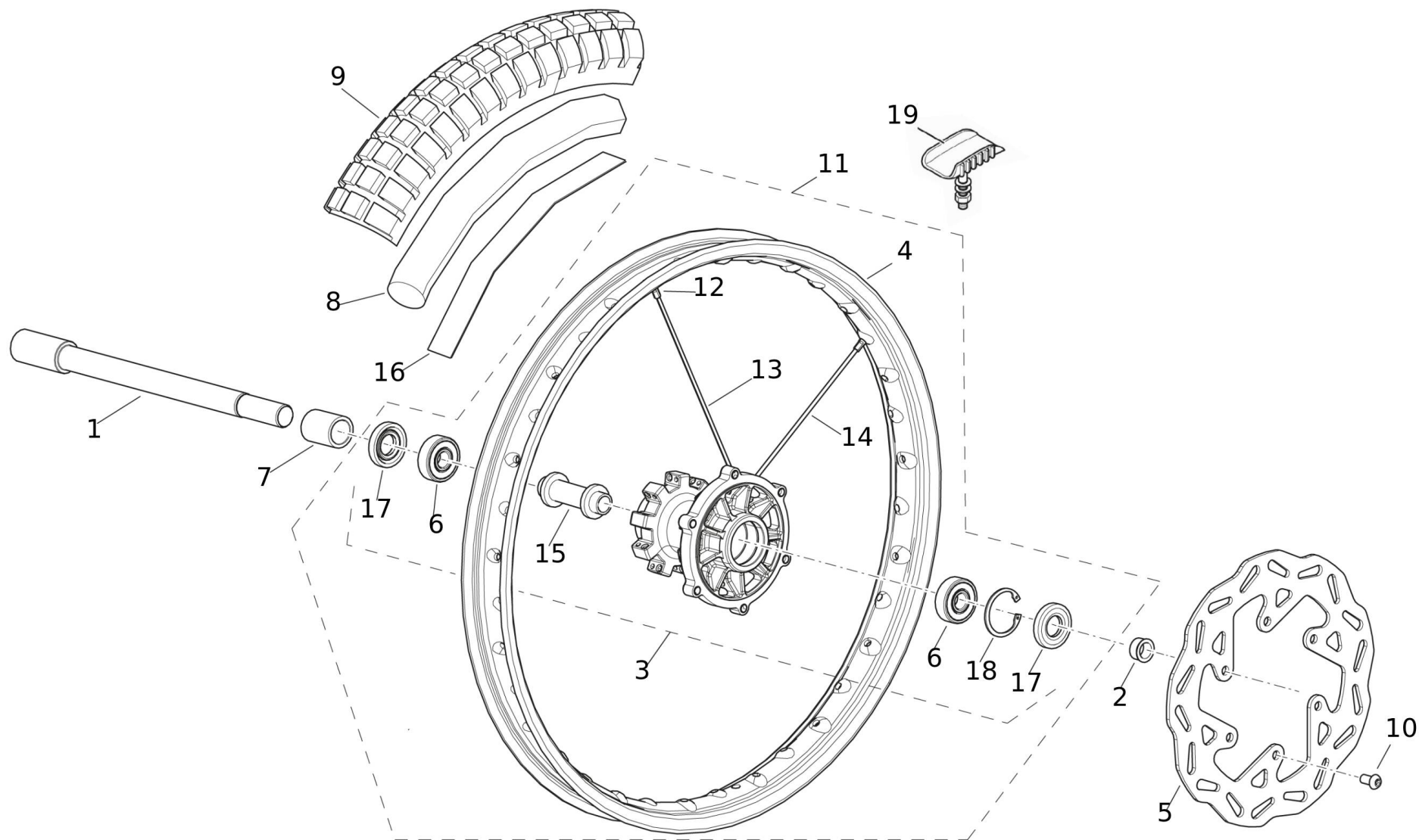
2 - Swingarm (XEF 250 TRAIL E5 MY21-MY22)

2_XEF_250_TRAIL_MY21



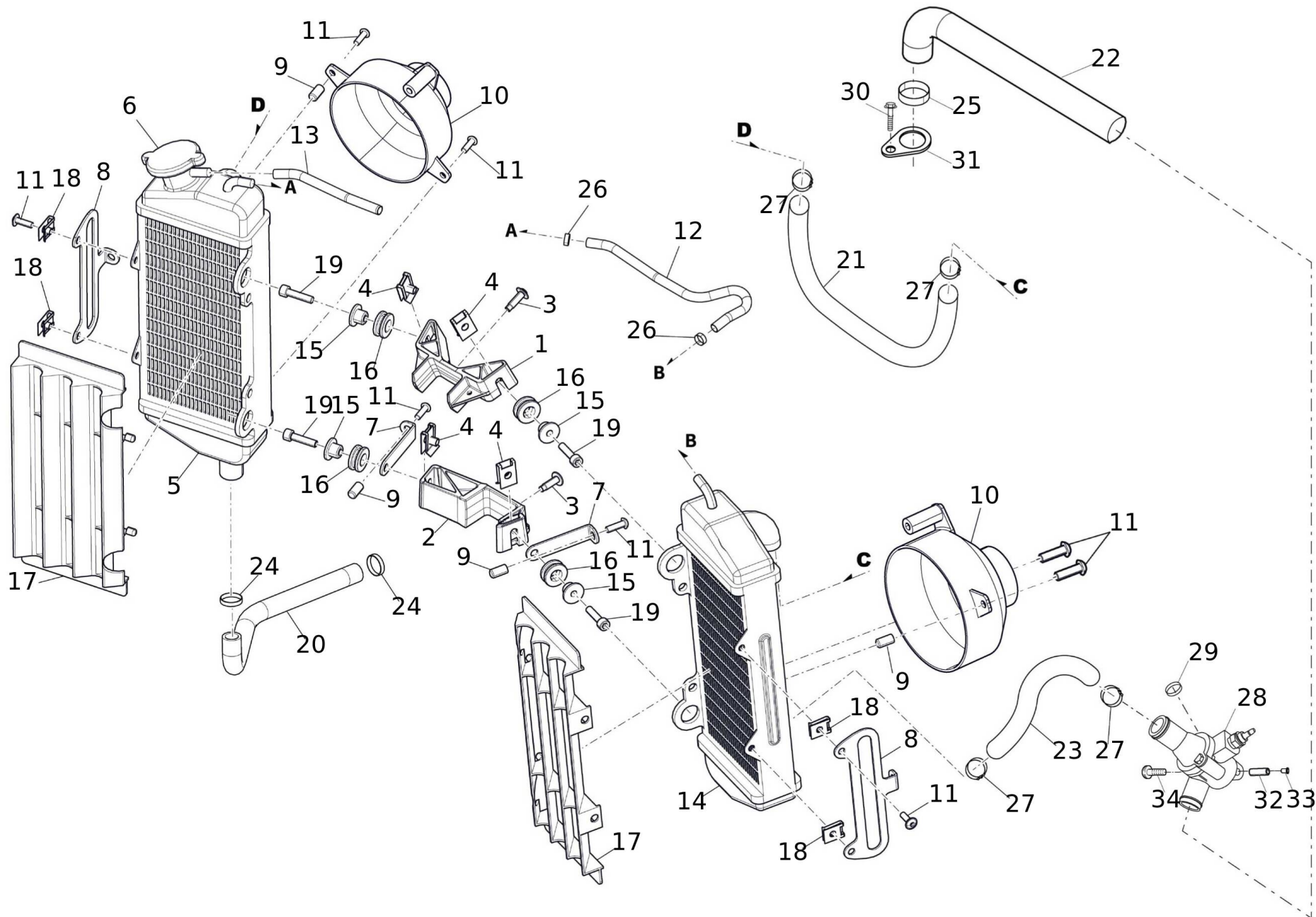
3 - Front fork

#	Code	Description	Specification	UM	Qty
1	05478005	CAP		pz	1
2	07776005	LOWER HANDLEBAR SUPPORT TL-CAB		pz	2
3	05109005	STEERING TUBE NUT		pz	1
4	02538005	SCREW M8X25 UNI 5931		pz	4
5	08817005	FORK BRACKET UPPER MY21		pz	1
6	00141005	SCREW M8x40 UNI 5931		pz	9
7	07775005	UPPER HANDLEBAR SUPPORT TL-CAB		pz	2
8	09506020	FORK PLATE LOWER + STEERING STEERER MY21		pz	1
9	F43CEA002V	SHEATH FORK D43 RED		pz	2
10	FPSS004	LINING PROTECTION RING WIRE 2 OLLE		pz	2
11	V1264005	FORK STEM		pz	2
12	F43PO001	OIL SEAL D43 NOK		pz	2
13	F43RP001	DUST SEAL D43 NOK		pz	2
14	FDUEX424420	BUSHING PTFE 42X44X20		pz	4
15	FDUIN434712	BUSHING PTFE 43X47X12		pz	2
16	FPSV009	WASHER 55X45X2		pz	2
17	FPSS002	OIL SEAL RING WIRE 1.8 OLLE		pz	2
18	F41GRT003	CAP		pz	1
19	F43GRE003	ROD D12 STD SPRING SIDE		pz	1
20	V1268005	SPRING		pz	1
21	V0062005	D43 FORK LEGS KIT RED OLLE REG		pz	1
22	FPSC006	SCREW DIN912x20		pz	1
23	V1269005	HYDRAULIC CARTRIDGE		pz	1
24	FPSC014	SCREW M12X30 DIN912		pz	1
25	F41GRT002	CAP		pz	1
26	V1262005	O RING		pz	2
27	FPSV010	WASHER 12X17X1,5		pz	1
28	04309005	SPACER		pz	2
29	04806005	SPACER		pz	1
30	01981005	SCREW-HEXAGONAL CHEESE HEAD 10X30		pz	2
31	00280005	NUT M10 SELF-BLOCKING		pz	2
32	03997005	SCREW		pz	1
33	00301005	CABLE GUIDE		pz	1



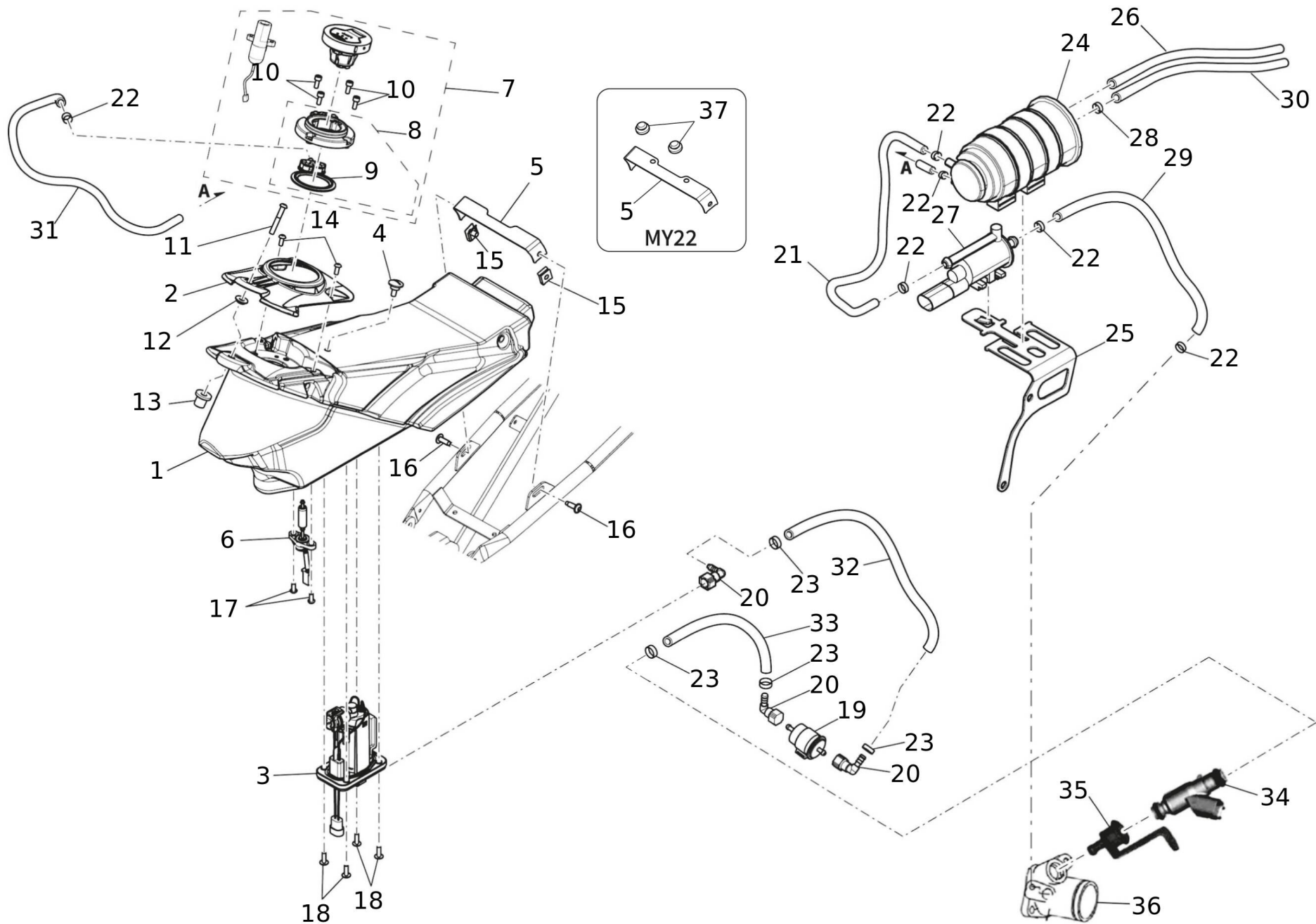
#	Code	Description	Specification	UM	Qty
1	03494005	FRONT WHEEL AXLE		pz	1
2	04717005	SPACER		pz	1
3	04480020	FRONT HUB WITH BEARINGS FANTIC		pz	1
4	04708005	RIM 1,60 X 21 (BLACK)		pz	1
5	05101005	FRONT BRAKE DISK 260 X 4		pz	1
6	04486005	FRONT HUB BEARING FANTIC CE 6302		pz	1
7	04716005	SPACER		pz	1
8	00234005	INNER TUBE-FRONT 21" CASA		pz	1
9	03349005	TYRE-FRONT 21"-90/90 ENDURO		pz	1
10	04987005	SCREW		pz	6
11	04750020	FRONT SPOKE WHEEL ENDURO		pz	1
12	04499005	NIPPLES D. 3,5mm FANTIC - CAB		pz	36
	00187005	NIPPLES		pz	36
13	04995005	RIGHT SPOKE ENDURO FRONT (DISC OPPOSITE)		pz	18
14	04994005	LEFT SPOKE ENDURO FRONT (DISC SIDE)		pz	18
15	04483005	FRONT HUB INTERNAL SPACER FANTIC/CAB		pz	1
	05605005	FRONT HUB INTERNAL SPACER FANTIC/CAB		pz	1
16	05152005	COVER NIPPLES 18X25		pz	1
17	04485005	FRONT HUB DUST COVER RING FANTIC CE		pz	1
18	04429005	INTERNAL SEEGER RING J42		pz	1
19	00211005	TYRE STOPPER FRONT.		pz	1

#	Code	Description	Specification	UM	Qty
1	04616020	MOZZO POSTERIORE COMPLETO FANTIC CE		pz	1
2	04709005	RIM 1,85 X 18 (BLACK)		pz	1
3	05102005	REAR BRAKE DISK 220 X 4		pz	1
4	05061005	REAR SPROCKET 520 Z50 ERGAL GOLD MY19		pz	1
5	00917005	REAR WHEEL AXLE	MY21	pz	1
	09129005	REAR AXLE		pz	1
5	09123005	REAR WHEEL AXLE TL MY22	MY22	pz	1
6	04751020	REAR SPOKE WHEEL ENDURO		pz	1
7	04719005	SPACER		pz	1
8	04720005	SPACER		pz	1
9	00221005	NUT M17x1.5		pz	1
10	00253005	WASHER M16	MY21	pz	2
11	04489005	REAR HUB DUST COVER RING FAN/CAB CE		pz	2
12	04430005	SEEGER RING J47		pz	1
13	00203005	INNER TUBE-REAR 18" CASA		pz	1
14	03350005	TYRE		pz	1
15	02319005	COVER NIPPLES 18X25		pz	1
16	04499005	NIPPLES D. 3,5mm FANTIC - CAB		pz	36
	00187005	NIPPLES		pz	36
17	04997005	LEFT/RIGHT SPOKE ENDURO REAR		pz	18
18	02167005	BUSHING REAR POW		pz	1
19	04482005	REAR HUB INTERNAL SPACER FANTIC/CAB		pz	1
	05604005	REAR HUB INTERNAL SPACER FANTIC/CAB		pz	1
20	04487005	REAR HUB BEARING FANTIC/CAB CE 6303		pz	3
21	02356005	JOINT FOR CHAIN 428		pz	1
22	04062005	CHAIN		pz	1
23	00583005	NUT-LOCK 8 LOW		pz	6
24	00363005	SCREW-SOCKET CONVEX HEAD 6X20		pz	6
25	04929005	SPROKE SCREW M8X35		pz	6
26	00060005	WASHER M8 UNI 6592		pz	6
27	00210005	TYRE STOPPER REAR		pz	1



6 - Radiator (XEF 250 TRAIL E5 MY21-MY22)

#	Code	Description	Specification	UM	Qty
1	04057005	RADIATOR SUPPORT BRAKET (UPPER)		pz	1
2	04058005	RADIATOR SUPPORT BRAKET (LOWER)		pz	1
3	02540005	SCREW-SOCKET CONVEX HEAD 6X16		pz	2
4	00070005	CLIP M6		pz	4
5	01186005	RIGHT RADIATOR		pz	1
6	04277005	RADIATOR CUP		pz	1
7	04105005	INTERNAL FAN BRACKET TL		pz	2
8	04106005	EXTERNAL FAN BRACKET TL		pz	2
9	01537005	RIVET-SCREW 5		pz	4
10	04157005	RADIATOR FAN TL-CAB		pz	2
	07724005	FAN		pz	2
11	00042005	SCREW-FLANGED 5X16		pz	6
12	05085005	TUBO EPDM 7x13 ROTOLO 100m		cm	20
	09858005	TUBO EPDM 7x13 ROTOLO 100m		pz	20
13	04082005	PIPE ROLLER BLACK		cm	80
	09850005	PIPE ROLLER BLACK		pz	80
14	01187005	LEFT RADIATOR		pz	1
15	00767005	RADIATOR SUPPORTS SPACER 50cc		pz	4
16	00834005	GROMMET FOR RADIATOR SUPPORTS SPACER		pz	4
17	01351005	RADIATOR COVER		pz	2
18	01891005	CLIP 12X15		pz	4
19	00047005	SCREW M6x25		pz	4
	08396005	SCREW		pz	4
20	04060005	SLEEVE		pz	1
21	04184005	RADIATOR CONNECTION PIPE		pz	1
22	04183005	SLEEVE		pz	1
23	04059005	SLEEVE		pz	1
24	04119005	CLAMP RADIATOR CLICR290		pz	1
25	08140005	CLAMP		pz	1
26	05327005	CLAMP		pz	2
27	00274005	CLAMP RADIATOR CLIC R250		pz	6
28	NC250-0017	THERMOSTAT ASSY		pz	1
29	05009005	PLUG DISTRIBUTOR		pz	1
30	NC250-0015	BOLT M6+ù10		pz	1
31	NC250-0016	OUTLET PIPE BAFFLE		pz	1
32	04135005	SPACER		pz	1
33	04144005	RIVET-SCREW 6		pz	1
34	04137005	SCREW 6X45		pz	1



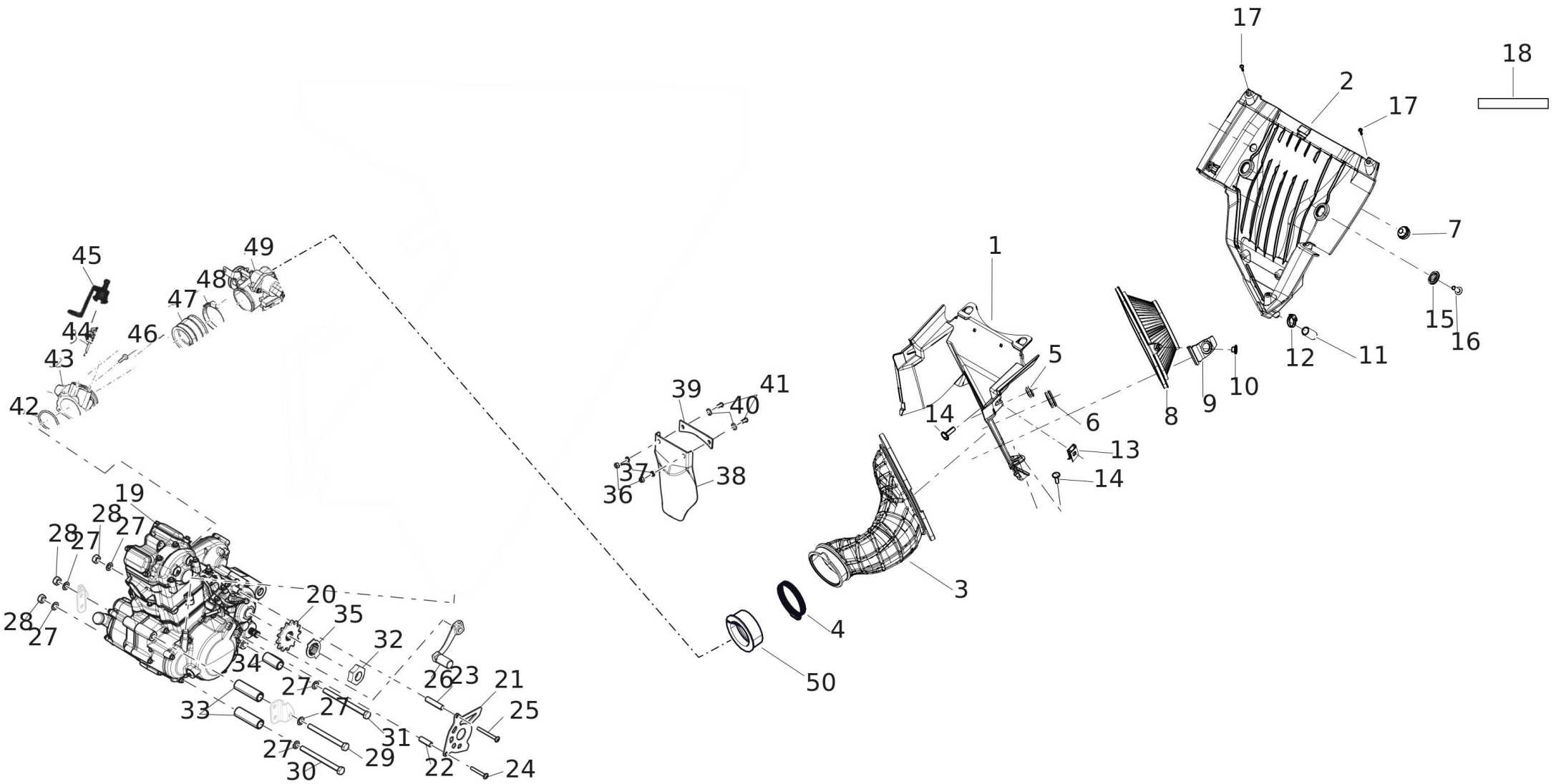
#	Code	Description	Specification	UM	Qty
1	08606005	TANK	MY21-MY22	pz	1
1	09836005	FUEL TANK TL INJECTION MY23	MY24	pz	1
2	05402005	COVER		pz	1
3	08175005	FUEL PUMP TL MY21		pz	1
4	00136005	SEAT PIN		pz	1
5	04094005	CONNECTION PLATE TAB SADDLE TL	MY21	pz	1
	08667005	SUPPORT		pz	1
5	08667005	SUPPORT	MY22	pz	1
6	04830005	PROBE	MY21-MY22	pz	1
6	09441005	FUEL LEVEL RANGE 1/2	MY24	pz	1
7	05341005	KEY BLOCK SET TL		pz	1
	09835005	COMPLETE KEY BLOCK KIT TL MY23		pz	1
8	07657005	GATHERER		pz	1
9	07658005	GASKET		pz	1
10	04859005	SCREW		pz	4
11	01534005	SCREW-SOCKET CONVEX HEAD 6X45		pz	1
12	00340005	WASHER-SPACE		pz	1
13	04125005	EXPANSION RUBBER M6		pz	1
14	02209005	SCREW-SOCKET CONVEX HEAD 5X6		pz	2
15	02212005	STAPLE WIRE DIAM. 6 16,3X18,6		pz	2
16	02540005	SCREW-SOCKET CONVEX HEAD 6X16		pz	2
17	00334005	SCREW-FLANGED 5X12		pz	2
18	00042005	SCREW-FLANGED 5X16		pz	4
19	05066005	FUEL FILTER NC250/NC450		pz	1
20	05067005	QUICK CONNECTOR		pz	3
21	07412005	HOSE GREY COPOLAN UML 7 x 12		cm	7
	09859005	HOSE GREY COPOLAN UML 7 x 12		pz	7
22	01688005	CLIC110 CLAMP FOR RADIATOR		pz	6
23	01927005	CLIC140 CLAMP FOR AIS 125cc VALVE		pz	4
24	NC450-0151	CANISTER NC450		pz	1
25	07667005	SUPPORT		pz	1
26	04792005	NBR RUBBER HOSE 3X6		cm	35
27	NC450-0155	CANISTER PURGE VALVE NC450		pz	1
28	01927005	CLIC140 CLAMP FOR AIS 125cc VALVE		pz	1
29	08716005	HOSE 6X11 L300 PREF		pz	1
30	04083005	PIPE ROLLER BLACK		cm	35
	09851005	PIPE ROLLER BLACK		pz	35
31	08631005	PIPE 6X11		cm	61
	09860005	PIPE 6X11		pz	61
32	08634005	PETROL LINE		cm	20
	09861005	LEAD 5/16		pz	20
33	08634005	PETROL LINE		cm	22
	09861005	LEAD 5/16		pz	22
34	NC250-0029	FUEL INJECTOR NC250		pz	1
	NC250-0030	INJECTOR BRACKET 7 CA Fuel tank (XEF 250 TRAIL E5 MY21-MY22)		7_XEF_250_TRAIL_MY21	1
		INLET PIPE NC250		pz	1
37	08668005	GROMMET	MY22	pz	2

#	Code	Description	Specification	UM	Qty
---	------	-------------	---------------	----	-----



7 - Fuel tank (XEF 250 TRAIL E5 MY21-MY22)

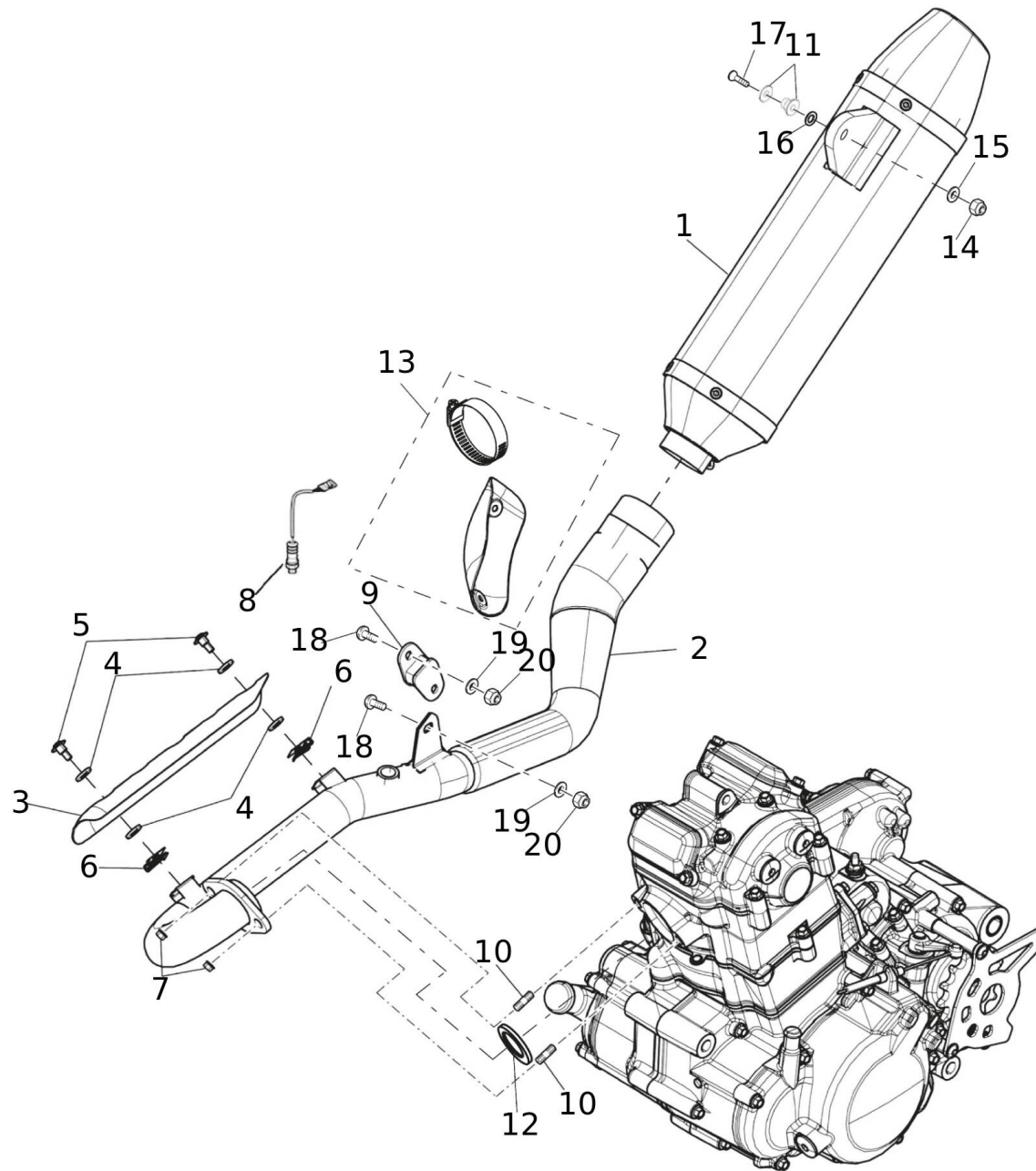
7_XEF_250_TRAIL_MY21



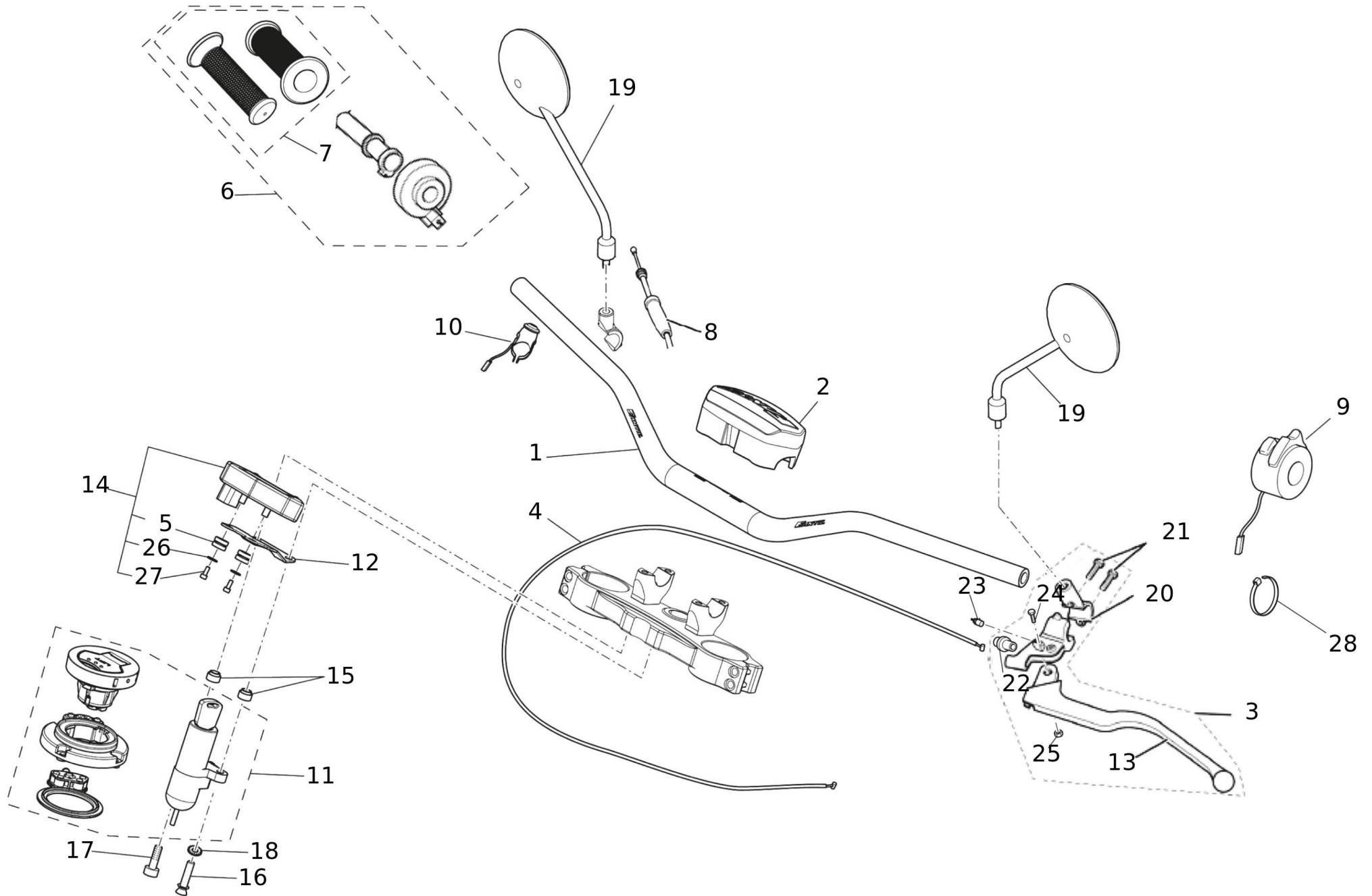
#	Code	Description	Specification	UM	Qty
1	09769005	FRONT AIR FILTER HOUSING PANEL		pz	1
	v1453005	PARATIA ANT. CASSA FILTRO MY24		pz	1
2	09770005	REAR AIR CLEANER HOUSING PANEL		pz	1
3	09863005	INTAKE HOSE TL250 MY23		pz	1
4	00175005	CLAMP-FILTER SLEEVE		pz	1
5	09865005	RUBBER CABLE GLANDS DKF-TPE 9/14/18-3BLACK		pz	1
6	09866005	CABLE GUIDE RUBBER DK TPE 16/22/27 3BLACK		pz	1
7	09868005	CABLE GUIDE IP S M1256.4.7 TG BLACK		pz	1
8	09883005	AIR FILTER TL125 MY23		pz	1
9	09803005	HOLDER AIR FILTER TL MY23		pz	1
10	09442005	QUICK RELEASE RUBBER GROMMET		pz	1
11	09849005	CONDENSATION CAP TL MY23		pz	1
12	09891005	CLAMP DIAM. 13.3		pz	1
13	00070005	CLIP M6		pz	1
14	07458005	SCREW		pz	1
15	07455005	BUSHING		pz	1
16	02540005	SCREW-SOCKET CONVEX HEAD 6X16		pz	1
17	04203005	SCREW 5X16		pz	1
18	V0085005	STICKER NEOPRENE 5X5		pz	1
19	09413005	COMPLETE ENGINE 250 4T I.E. 2022		pz	1
	07666005	COMPLETE 250 4T E.F.I. E4 2021 ENGINE		pz	1
20	05214005	PINION NC250 Z=14		pz	1
21	04063005	PINION GUARD		pz	1
22	04135005	SPACER		pz	1
23	04136005	SPACER		pz	1
24	04137005	SCREW 6X45		pz	1
25	04138005	SCREW 6X60		pz	1
26	04034005	LEVER		pz	1
27	00341005	WASHER 10		pz	1
28	00280005	NUT M10 SELF-BLOCKING		pz	1
29	04096005	SCREW-HEXAGONAL HEAD 10X110		pz	1
30	01486005	SCREW-HEXAGONAL HEAD 10X120		pz	1
31	04097005	SCREW-HEXAGONAL HEAD 10X130		pz	1
32	NC250-0210	SPROCKET NUT		pz	1
33	04116005	ENGINE FRONT CONNECTION SPACER		pz	1
34	04029005	SPACER		pz	1
35	NC450-0136	SPROCKET STOP WASHER		pz	1
36	00064005	NUT-LOCK 6 LOW		pz	1
37	00807005	WASHER 6X12		pz	1
38	08111005	MUDGUARD		pz	1
39	08411005	PLATE		pz	1
40	00340005	WASHER-SPACE		pz	1



#	Code	Description	Specification	UM	Qty
41	00582005	SCREW-SOCKET CONVEX HEAD 6X12		pz	2
42	NC250-0022	SEAL RING OF INLET PIPE		pz	1
43	NC250-0025	INLET PIPE NC250		pz	1
44	NC250-0029	FUEL INJECTOR NC250		pz	1
45	NC250-0021	INJECTOR BRACKET CAB 500		pz	1
46	NC250-0024	BOLT M6+ù16		pz	1
47	NC250-0026	CONNECTING PIPE		pz	1
48	NC250-0019	CLAMP INLET PIPE		pz	1
49	NC250-0027	THROTTLE BODY NC250		pz	1
50	04824005	INTAKE ADAPTER TL250 EURO4		pz	1



#	Code	Description	Specification	UM	Qty
1	V0084005	SHORT SILENCER TL250 MY23		pz	1
2	08748005	KRUEMMER OPEN TL250		pz	1
3	05388005	BUCKLER		pz	1
4	04833005	INSULATED WASHER M6		pz	4
5	05091005	SCREW		pz	2
6	00069005	CLIP 14X20		pz	2
7	00063005	NUT-STOP 8 FLANGED		pz	2
8	05213005	LAMBDA SENSOR E4 FC250-450/TL250		pz	1
9	00117005	EXHAUST SILENTBLOCK		pz	1
10	04193005	BOLT		pz	2
11	05157020	SILENCER CONNECTION KIT TL250 MY19		pz	1
	09499020	KIT HOLDER EXHAUST UK TL250		pz	1
12	NC250-0013	PACKING SILENCER		pz	1
13	04053005	BUCKLER		pz	1
14	00067005	NUT-LOCK 8		pz	1
15	00060005	WASHER M8 UNI 6592		pz	1
16	04316005	WASHER		pz	1
17	02294005	SCREW FLATHEAD 8X35		pz	1
18	00045005	SCREW-SOCKET CONVEX HEAD 6X16		pz	2
19	00807005	WASHER 6X12		pz	2
20	00064005	NUT-LOCK 6 LOW		pz	2

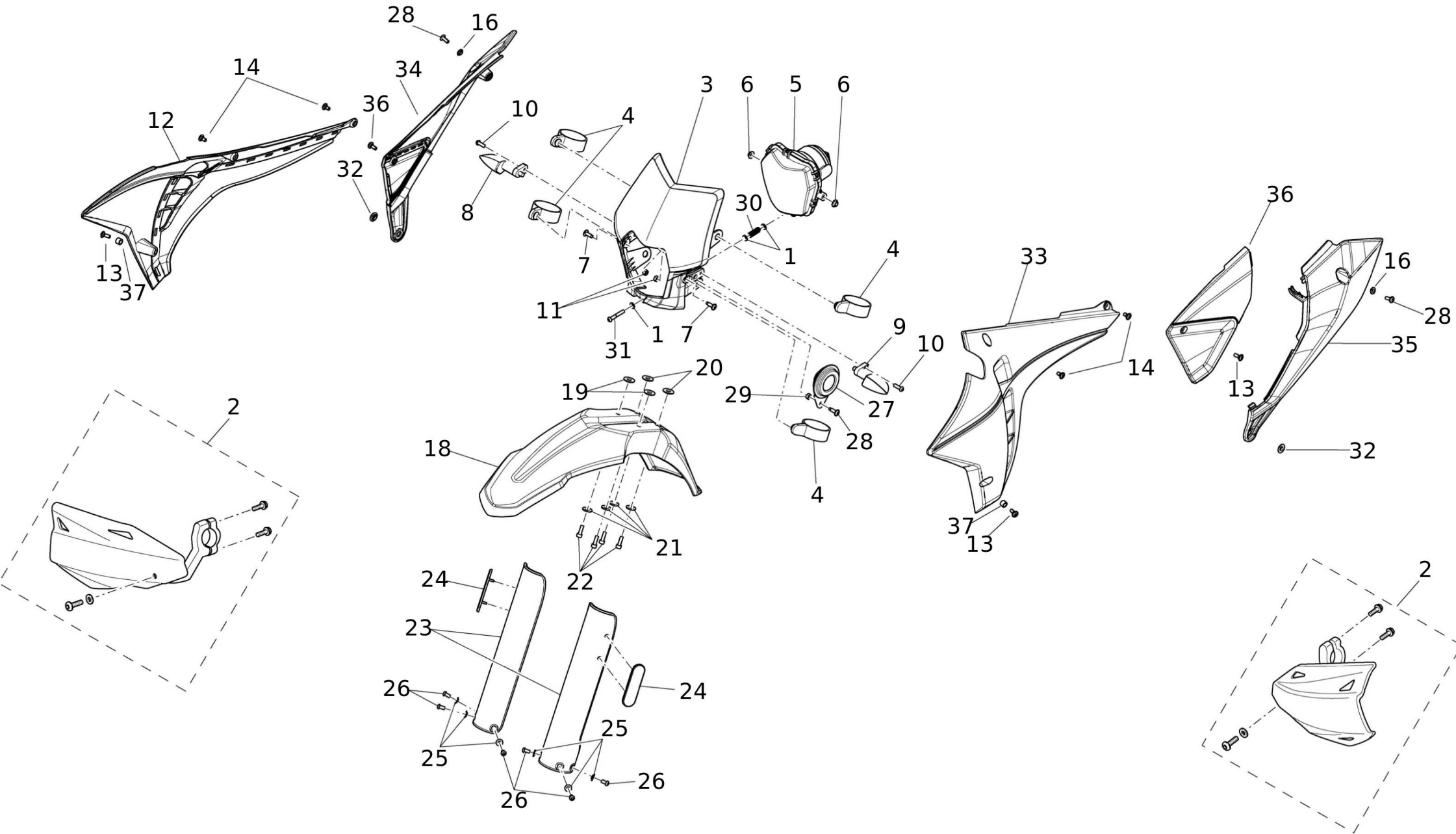


#	Code	Description	Specification	UM	Qty
1	05403005	RED HANDLEBAR Ø28		pz	1
	V2488005	RED ANODIZED HANDLEBAR TL50-125MY25		pz	1
2	05033005	BAR PAD MY19		pz	1
3	00944005	CONTROL-CLUTCH LEVER 2007		pz	1
4	05198005	CABLE		pz	1
5	08583005	KOSO CUSHION RUBBER		pz	2
6	04103005	CONTROL-THROTTLE TL250 4T		pz	1
7	02040005	HANDGRIP (COUPLE) RED/BLACK		pz	1
8	05218005	THROTTLE CABLE 250CC EURO4		pz	1
9	07729005	MY21 CAB LIGHTS DEVICE		pz	1
10	06542005	IGNITION DEVICE 125 MY21		pz	1
11	05341005	KEY BLOCK SET TL		pz	1
	09835005	COMPLETE KEY BLOCK KIT TL MY23		pz	1
12	06470005	SUPPORT		pz	1
	V2764005	STAFFA SUPP. STRUMENTO TL125 MY25		pz	1
13	01037005	CLUTCH LEVER		pz	1
14	07731005	ODOMETER	my23	pz	1
	V0060005	SPEEDOMETER TL125 250 MY23 DB 01RN		pz	1
14	V0060005	SPEEDOMETER TL125 250 MY23 DB 01RN	my24	pz	1
15	05394005	SWITCH SPACER CAB		pz	2
16	04636005	TEAR-OFF SCREW 8X30		pz	1
17	02956005	SCREW-SOCKET HEAD 8X30		pz	1
18	00816005	WASHER 8 STEEL		pz	1
19	00222005	REAR-VIEW MIRROR 50/125 RH THREAD		pz	2
20	00252005	SUPPORT		pz	1
21	00255005	SCREW-SOCKET CONVEX HEAD 6X25		pz	2
22	00242005	ADJUSTER CLUTCH LEVER		pz	1
23	00945005	STARTER SAFETY SWITCH		pz	1
24	08957005	SCREW		pz	1
25	05136005	NUT		pz	1
26	05178005	WASHER		pz	2
27	00496005	SCREW M4x1.25x18		pz	2
28	00291005	CLAMP BLACK PLASTIC 3.6X290		pz	2



#	Code	Description	Specification	UM	Qty
1	04039005	REAR BRAKE PEDAL TL125-250		pz	1
	V1805005	COMPLETE REAR BRAKE PEDAL TL125-250 MY25		pz	1
2	04285005	BRAKE PEDAL SPRING		pz	1
3	05404005	BUCKLER	Comp	pz	1
4	00049005	SCREW-SOCKET CONVEX HEAD 6X40	Comp	pz	2
5	00826005	PIN PISTON FOOT BRAKE PEDAL		pz	1
6	00987005	SCREW-SOCKET CONVEX HEAD 10X40		pz	1
7	00280005	NUT M10 SELF-BLOCKING		pz	1
8	00341005	WASHER 10		pz	1
9	00766005	MOTARD FRONT FENDER 4.5 BUSHING	Comp	pz	2
10	00340005	WASHER-SPACE		pz	2
11	05539005	Front braking pump assembly	Comp	pz	1
12	05540005	Front braking lever	Comp	pz	1
13	03259005	STOP SWITCH	Comp	pz	1
14	00933005	WASHER, PLATE	Comp	pz	7
	00270005	FLAT COPPER WASHER		pz	7
15	02177005	FRONT BRAKE CALIPER BRAKING	Comp	pz	1
16	04256005	BRAKE PADS-FRON TL250	Comp	pz	1
17	02174005	REAR BRAKE PUMP BRAKING		pz	1
18	02112005	STOP SWITHC (BRAKING)	Comp	pz	1
19	02182005	FRONT BRAKE HOSE (FOR BRAKING PUMP)	Comp	pz	1
20	04314005	FRONT BRAKE CALIPER SUPPORT	Comp	pz	1
21	02178005	REAR BRAKE CALIPER BRAKING	Comp	pz	1
22	00350005	SPECIAL BOLT BRAKING	Comp	pz	1
23	02128005	REAR BRAKE PADS BRAKING (2009)	Comp	pz	1
24	04329005	BRAKE TUBE	Comp	pz	1
25	00350005	SPECIAL BOLT BRAKING	Comp	pz	1
26	00933005	WASHER, PLATE	Comp	pz	1
	00270005	FLAT COPPER WASHER		pz	1
27	06448005	RING	Comp	pz	1
28	02565005	REAR BRAKE CALIPER SUPPORT	Comp	pz	1
29	00741005	BREATHER PIPE BRAKING		pz	2
30	00064005	NUT-LOCK 6 LOW		pz	2
31	00807005	WASHER 6X12		pz	2
32	03549005	SCREW		pz	1
33	01563005	SPEED SENSOR		pz	1
34	00066005	NUT 6		pz	1
35	04150005	SUPPORT		pz	1
36	00048005	SCREW-HEXAGONAL HEAD 6X25		pz	1
37	00816005	WASHER 8 STEEL	Comp	pz	2
38	01488005	SPROKE SCREW M8X35		pz	2



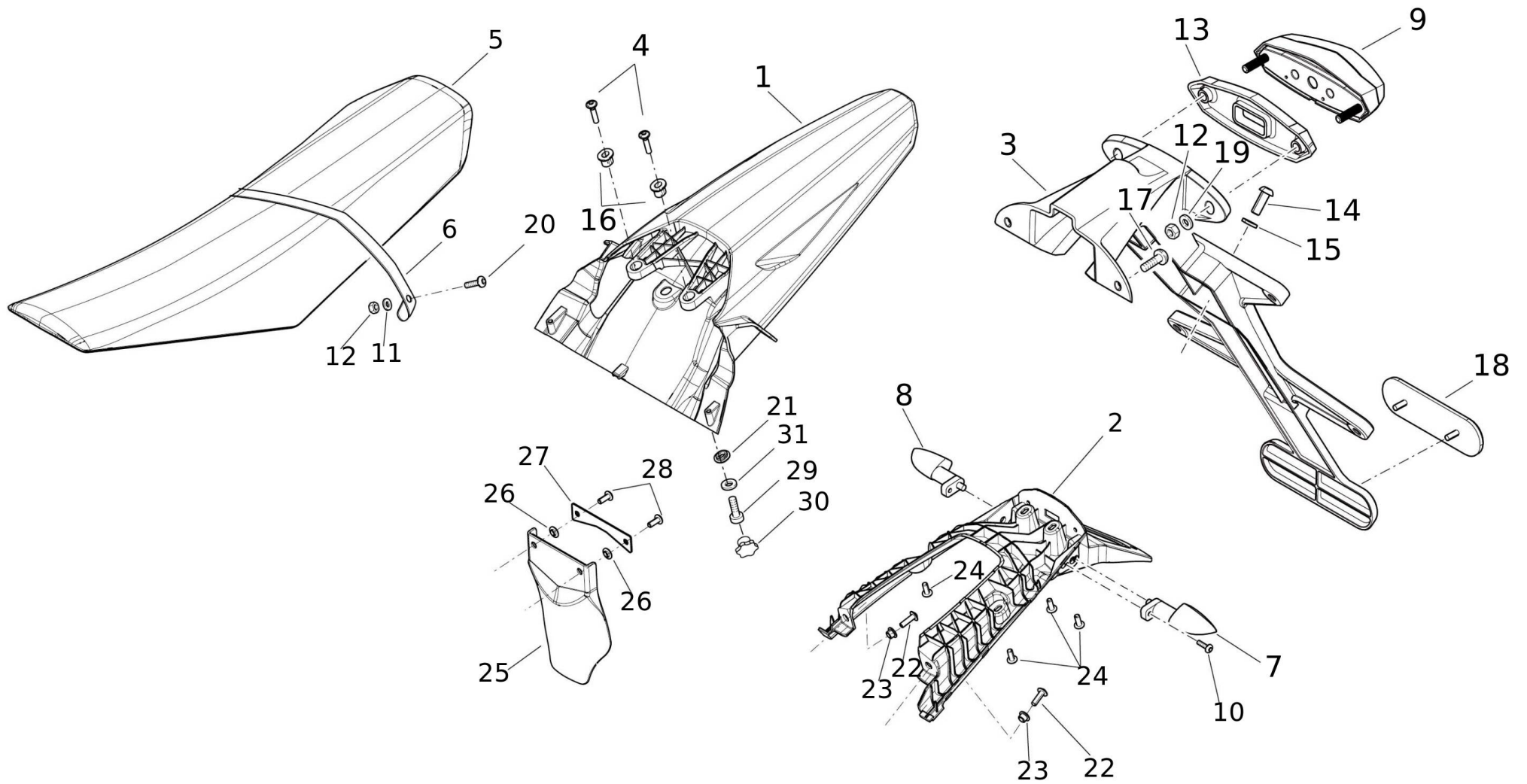


#	Code	Description	Specification	UM	Qty
1	00807005	WASHER 6X12		pz	3
2	02163005	HANDGUARD (WHITE) WITHOUT STICKER	Comp+White	pz	1
2	04194005	HANDGUARD (BLACK) WITHOUT STICKER	Comp+Black	pz	1
3	07511005	MASK		pz	1
4	07674005	4 ELASTIC BRACELETS FOR HEADLIGHT MASK		pz	4
5	05466005	LED HEADLIGHT XE/XEF	Comp	pz	1
5	05467005	OFF-ROAD BULB HEADLIGHT	Perf	pz	1
6	07694005	BUSHING		pz	2
7	02540005	SCREW-SOCKET CONVEX HEAD 6X16		pz	2
8	09795005	DIRECTION IND. ARROW FRONT RH / REAR LH		pz	1
9	09796005	DIRECTION IND. ARROW FRONT LH / REAR RH		pz	1
10	00363005	SCREW-SOCKET CONVEX HEAD 6X20		pz	2
11	00064005	NUT-LOCK 6 LOW		pz	2
12	09763005	RADIATOR COVER RIGHT WHITE MY23		pz	1
12	09903005	RADIATOR COVER RIGHT BLACK MY23		pz	1
13	09910005	SCREW M6X16 SPECIAL		pz	2
14	09754005	SCREW M6X11.8 SPECIAL		pz	4
15	00045005	SCREW-SOCKET CONVEX HEAD 6X16		pz	2
16	09643005	SOCKET 6.5X9.5X4.3		pz	2
17	00807005	WASHER 6X12		pz	4
18	07500005	FRONT FENDER OFF-ROAD WHITE	Enduro+White	pz	1
18	07504005	MUDGUARD	Enduro+Black	pz	1
19	06597005	COLLAR		pz	2
	08641005	COLLAR		pz	2
20	02522005	MUDGUARD SPACER	Enduro	pz	2
21	00058005	WASHER 6X18		pz	4
22	00046005	SCREW M6x20		pz	4
23	01890005	FORK PROTECTION WHITE (KIT)	White	pz	1
23	04205005	FORK PROTECTION BLACK (KIT)	Black	pz	1
24	V0075005	MY23 AMBER REFLECTOR		pz	2
25	00340005	WASHER-SPACE		pz	6
26	00582005	SCREW-SOCKET CONVEX HEAD 6X12		pz	6
27	00898005	SWINGARM USD BEEPER		pz	1
	V0198005	LEB ACOUSTIC SIGNAL		pz	1
28	02540005	SCREW-SOCKET CONVEX HEAD 6X16		pz	1
29	00064005	NUT-LOCK 6 LOW		pz	1
30	05594005	HEADLIGHT INCLINATION ADJUSTMENT SPRING		pz	1
31	00049005	SCREW-SOCKET CONVEX HEAD 6X40		pz	1
32	09730005	SOCKET 8.5X11.5X4.3		pz	2
33	09765005	WHITE LEFT CONVEYOR TL250 MY23	White	pz	1
33	09905005	BLACK LEFT CONVEYOR TL250 MY23	Black	pz	1
34	09774005	FAIRING RIGHT BLACK TL MY23	Black	pz	1

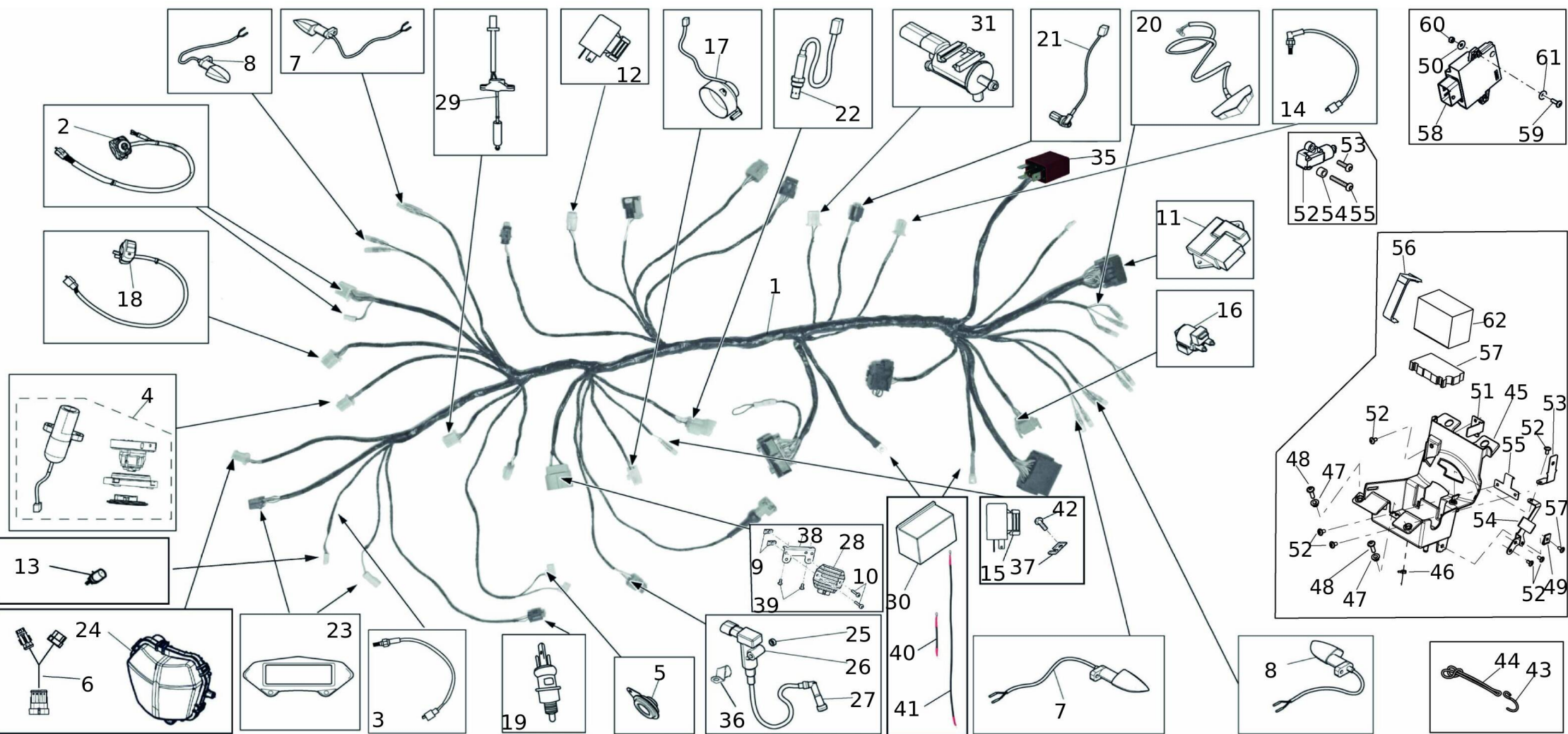


#	Code	Description	Specification	UM	Qty
34	09981005	FAIRING RIGHT WHITE TL MY23	White	pz	1
35	09775005	FAIRING LEFT BLACK TL MY23	Black	pz	1
35	09982005	FAIRING LEFT WHITE TL MY23	White	pz	1
36	09776005	SIDE PANEL LEFT BLACK TL MY23	Black	pz	1
36	09983005	SIDE PART LEFT WHITE TL MY23	White	pz	1
37	00802005	SPACER SPROCKET COVER		pz	2





#	Code	Description	Specification	UM	Qty
1	09784005	REAR FENDER BLACK TL MY23		pz	1
1	09980005	REAR FENDER WHITE TL MY23		pz	1
2	09785005	LICENSE PLATE HOLDER TL MY23		pz	1
3	05609005	PLATE SUPPORT TL		pz	1
4	09988005	SCREW 6X30 UNI 7380 CL10.9		pz	2
5	09786005	SEAT ROTTL MY23		pz	1
5	09936005	SEAT BLACK TL MY23		pz	1
6	04286005	PASSENGER SEAT BELT TL RED		pz	1
6	05105005	PASSENGER SEAT BELT TL BLACK		pz	1
7	09795005	DIRECTION IND. ARROW FRONT RH / REAR LH		pz	1
8	09796005	DIRECTION IND. ARROW FRONT LH / REAR RH		pz	1
9	05113005	TAILLIGHT WITH LED LICENSE PLATE LIGHT		pz	1
10	00042005	SCREW-FLANGED 5X16		pz	2
11	00057005	WASHER 5X16		pz	2
12	00267005	NUT-LOCK 5 LOW		pz	6
13	05610005	SPACER		pz	1
14	00045005	SCREW-SOCKET CONVEX HEAD 6X16		pz	1
15	00807005	WASHER 6X12		pz	11
16	09801005	SOCKET L20X6XH15.5		pz	2
17	04203005	SCREW 5X16		pz	2
18	V0086005	REFLECTOR RED OVAL		pz	1
19	00056005	WASHER 5X10		pz	4
20	00334005	SCREW-FLANGED 5X12		pz	2
21	09802005	SOCKET L20X6XH4.7		pz	1
22	07707005	SCREW		pz	2
	08645005	SCREW M6X20 TBEI FLANG ZINC. BLACK		pz	2
23	09642005	SOCKET 6.5X9.5X7.3		pz	2
24	07458005	SCREW		pz	4
25	08111005	MUDGUARD		pz	1
26	00340005	WASHER-SPACE		pz	2
27	08411005	PLATE		pz	1
28	07458005	SCREW		pz	2
29	V1005005	SCREW M6X18 UNI5911 8.8 EG		pz	1
30	V1004005	KNAUF BENCH		pz	1
31	V0592005	SPRING WASHER DIN2093 12X6.2X0.8		pz	1



#	Code	Description	Specification	UM	Qty
1	09818005	TL250 MY23 HARNESS		pz	1
2	00017005	LIGHTS CONTROL		pz	1
3	03259005	STOP SWITCH		pz	1
4	05341005	KEY BLOCK SET TL		pz	1
	09835005	COMPLETE KEY BLOCK KIT TL MY23		pz	1
5	V0198005	LEB ACOUSTIC SIGNAL		pz	1
6	06610005	ADAPTER CABLE LED MY21		pz	1
7	09795005	DIRECTION IND. ARROW FRONT RH / REAR LH		pz	1
8	09796005	DIRECTION IND. ARROW FRONT LH / REAR RH		pz	1
9	00070005	CLIP M6		pz	2
10	02540005	SCREW-SOCKET CONVEX HEAD 6X16		pz	2
11	V0289005	ECU TL250 MY22 UK		pz	1
12	01199005	FLASHER RELAY (TURN SIGNAL RELAY) 10W		pz	1
13	00945005	STARTER SAFETY SWITCH		pz	1
14	02112005	STOP SWITHC (BRAKING)		pz	1
15	03558005	FAN/LOADS/STOP RELAY		pz	1
	05457005	RELAY		pz	1
16	07638005	RELAY		pz	1
17	04157005	RADIATOR FAN TL-CAB		pz	2
	07724005	FAN		pz	2
18	00880005	START BUTTON		pz	1
19	00945005	STARTER SAFETY SWITCH		pz	1
20	05113005	TAILLIGHT WITH LED LICENSE PLATE LIGHT		pz	1
21	01563005	SPEED SENSOR		pz	1
22	05213005	LAMBDA SENSOR E4 FC250-450/TL250		pz	1
23	07731005	ODOMETER		pz	1
	V0060005	SPEEDOMETER TL125 250 MY23 DB 01RN		pz	1
24	05467005	OFF-ROAD BULB HEADLIGHT		pz	1
25	00766005	MOTARD FRONT FENDER 4.5 BUSHING		pz	1
26	NC250-0263	IGNITION COIL NC250/NC450		pz	1
27	NC250-0265	SPARK PLUG CAP		pz	1
28	NC250-0264	RECTIFIER REGULETOR ASSY		pz	1
29	04830005	PROBE		pz	1
30	05113005	TAILLIGHT WITH LED LICENSE PLATE LIGHT		pz	1
31	NC450-0155	CANISTER PURGE VALVE NC450		pz	1
32	NC250-0028	AIR PRESSURE SENSOR		pz	1
33	NC250-0020	AIR PRESSURE BRACKET		pz	1
34	NC250-0023	BOLT M6+ù10		pz	2
35	05457005	RELAY		pz	2
36	NC250-0018	CLIP HIGH VOLTAGE WIRE		pz	1
37	05145005	SUPPORT		pz	1
38	04104005	SUPPORT		pz	1
39	00363005	SCREW-SOCKET CONVEX HEAD 6X20		pz	3
40	08491005	CABLE		pz	1



#	Code	Description	Specification	UM	Qty
41	08492005	CABLE		pz	1
42	02540005	SCREW-SOCKET CONVEX HEAD 6X16		pz	1
43	09080005	HOOK BATTERY STRAP		pz	1
44	00998005	O RING BATTERY		pz	1
	10291005	O-RING 115X5 SILICONE 70SH		pz	1
45	09804005	BATTERY COMPARTMENT TL MY23		pz	1
46	09913005	CLAMP DIAM. 10.7		pz	1
47	09642005	SOCKET 6.5X9.5X7.3		pz	2
48	07707005	SCREW		pz	2
	08645005	SCREW M6X20 TBEI FLANG ZINC. BLACK		pz	2
49	00069005	CLIP 14X20		pz	1
50	00057005	WASHER 5X16		pz	1
51	09759005	BRACKET FLASHER RELAY		pz	1
52	07479005	SCREW		pz	6
53	09757005	HOLDER FUSES		pz	1
54	09755005	HOLDER RELAY		pz	1
55	09761005	BATTERY HOLDER TL250		pz	1
56	08405005	BATTERY BAND XEF-XXF		pz	1
57	09950005	TL250 NEOPRENE BATTERY MAT		pz	1
58	09418005	ST39 CAN CONTROL UNIT		pz	1
59	00042005	SCREW-FLANGED 5X16		pz	2
60	00267005	NUT-LOCK 5 LOW		pz	2
61	00056005	WASHER 5X10		pz	1
62	09806005	BAT FTZ7S-12B		pz	1



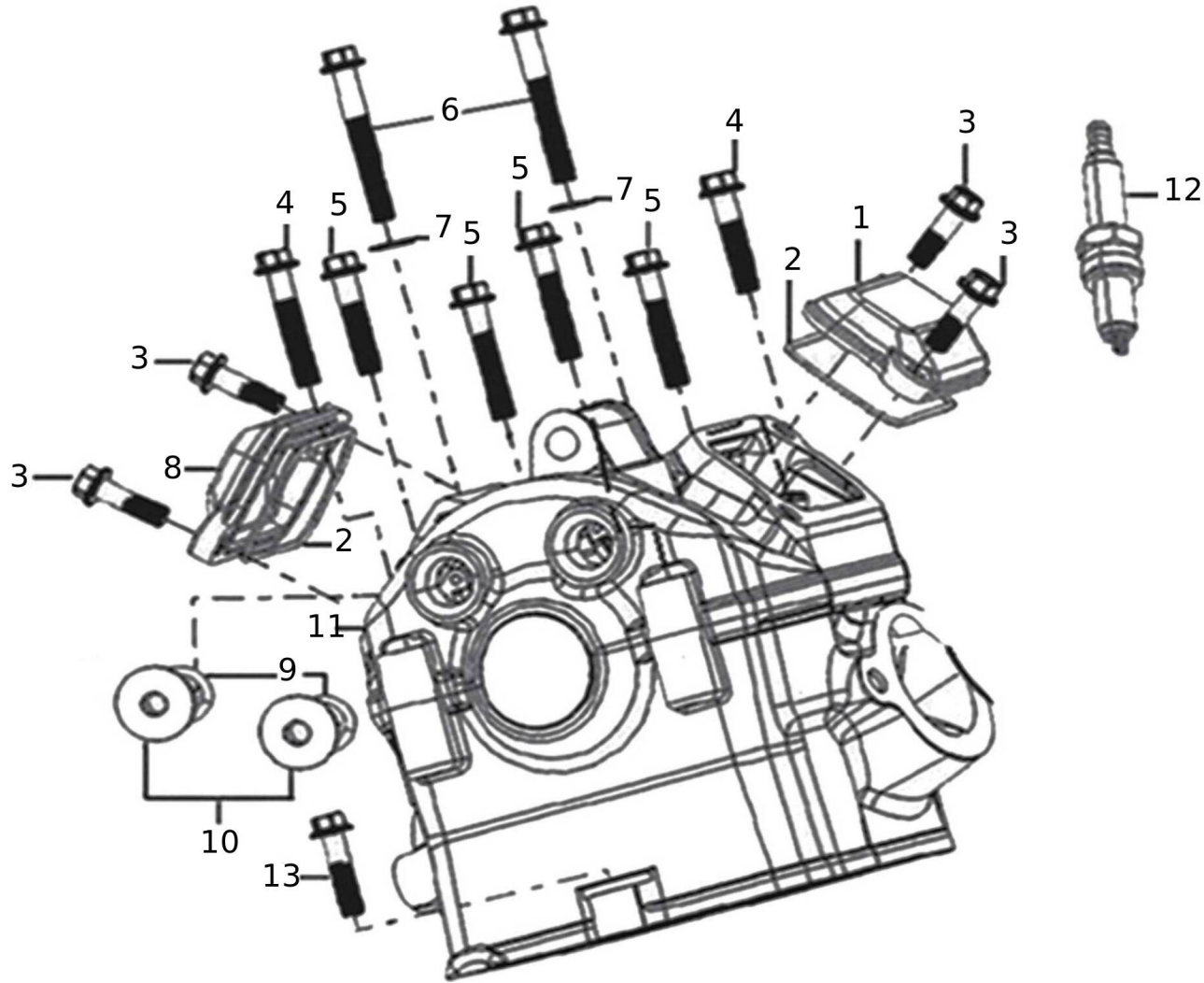
4



5

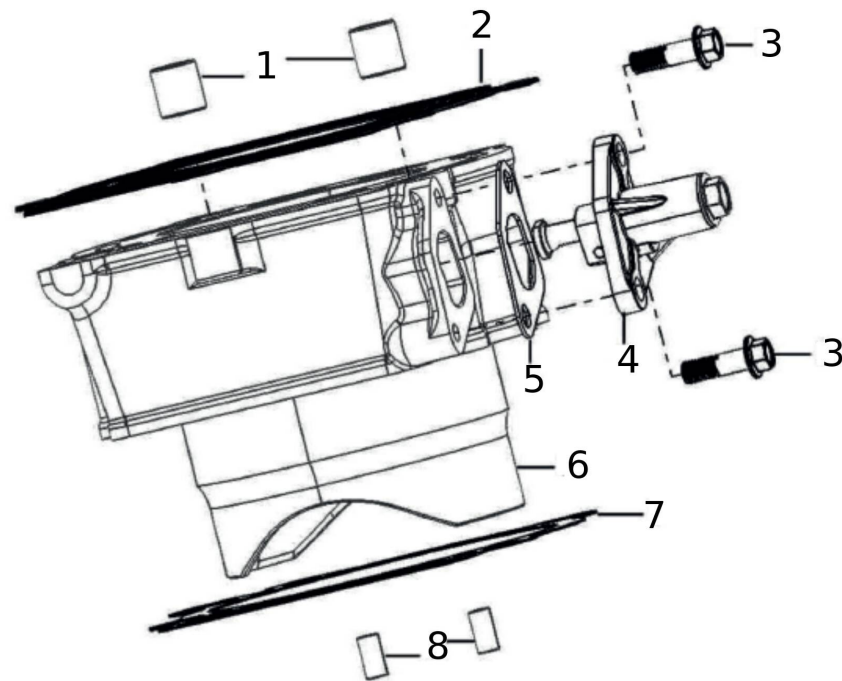


#	Code	Description	Specification	UM	Qty
1	09918005	STICKER KIT WHITE TL MY23	white	pz	1
1	09919005	STICKER KIT BLACK TL MY23	black	pz	1
2	05434005	KIT SWINGARM STICKERS END CASA BLK MY20	black	pz	1
2	08202005	ADHESIVES	white	pz	1
3	03538005	KIT SUSPENSION STICKERS 2014 FRS		pz	1
4	03365005	WARRANTY MANUAL		pz	1
5	06554005	USER MANUAL TL250 MY21		pz	1
6	07525005	STICKER BARDAHL ENGINE CRANKCASE		pz	1
8	V0178005	MOTOREX ENGINE CRANKCASE STICKER		pz	1

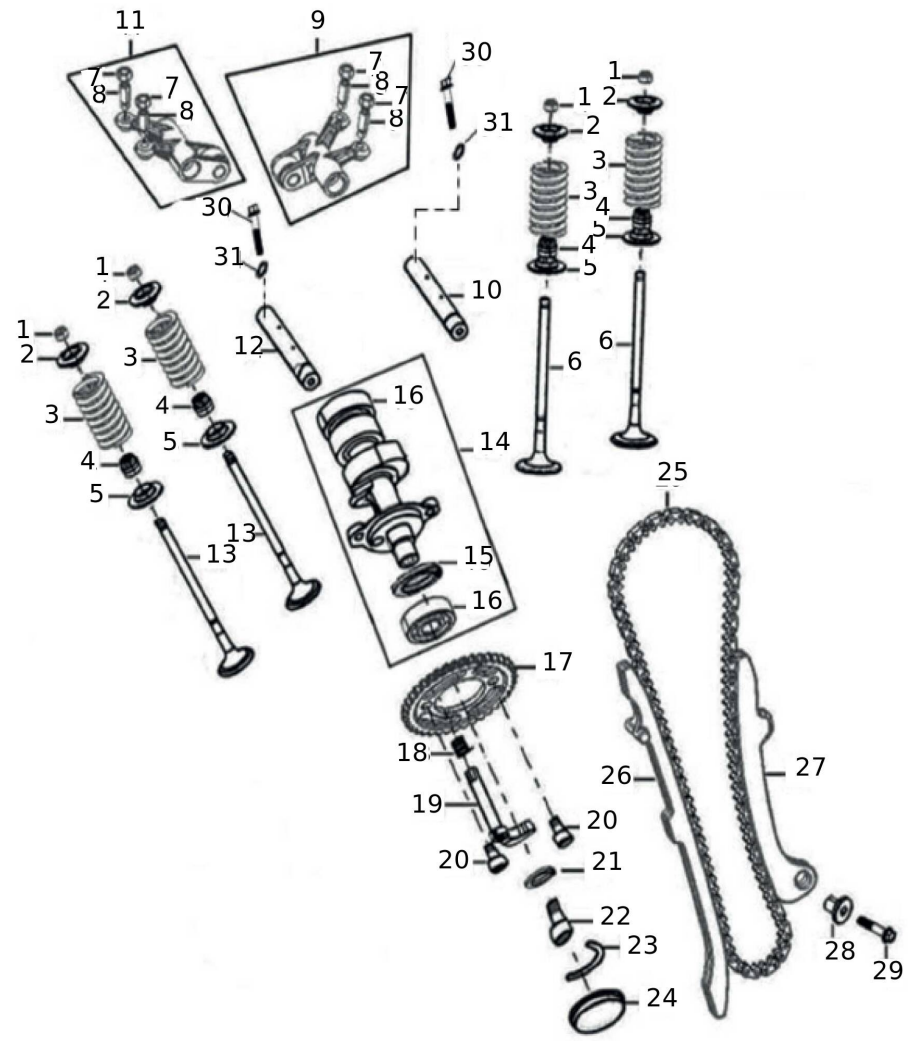


#	Code	Description	Specification	UM	Qty
1	NC250-0001	COVER VALVE CHAMBER		pz	1
2	NC250-0002	COVER VALVE CHAMBER SEALING		pz	2
3	NC250-0003	BOLT M6+ù25		pz	4
4	NC250-0004	SCREW M6X35		pz	2
5	NC250-0005	BOLT M6+ù30		pz	4
6	NC250-0006	HEAD SCREW		pz	2
7	NC250-0007	WASHER 6.5+ù1.5+ù12		pz	2
8	NC250-0008	COVER VALVE CHAMBER		pz	1
9	NC250-0009	O-RING 11.8+ù2.6		pz	2
10	NC250-0010	PLUG		pz	2
11	NC250-0011	CYLINDER HEAD ASSY		pz	1
12	02054005	SPARK PLUG 125 LC STANDARD		pz	1
13	NC250-0012	BOLT M6+ù25		pz	1

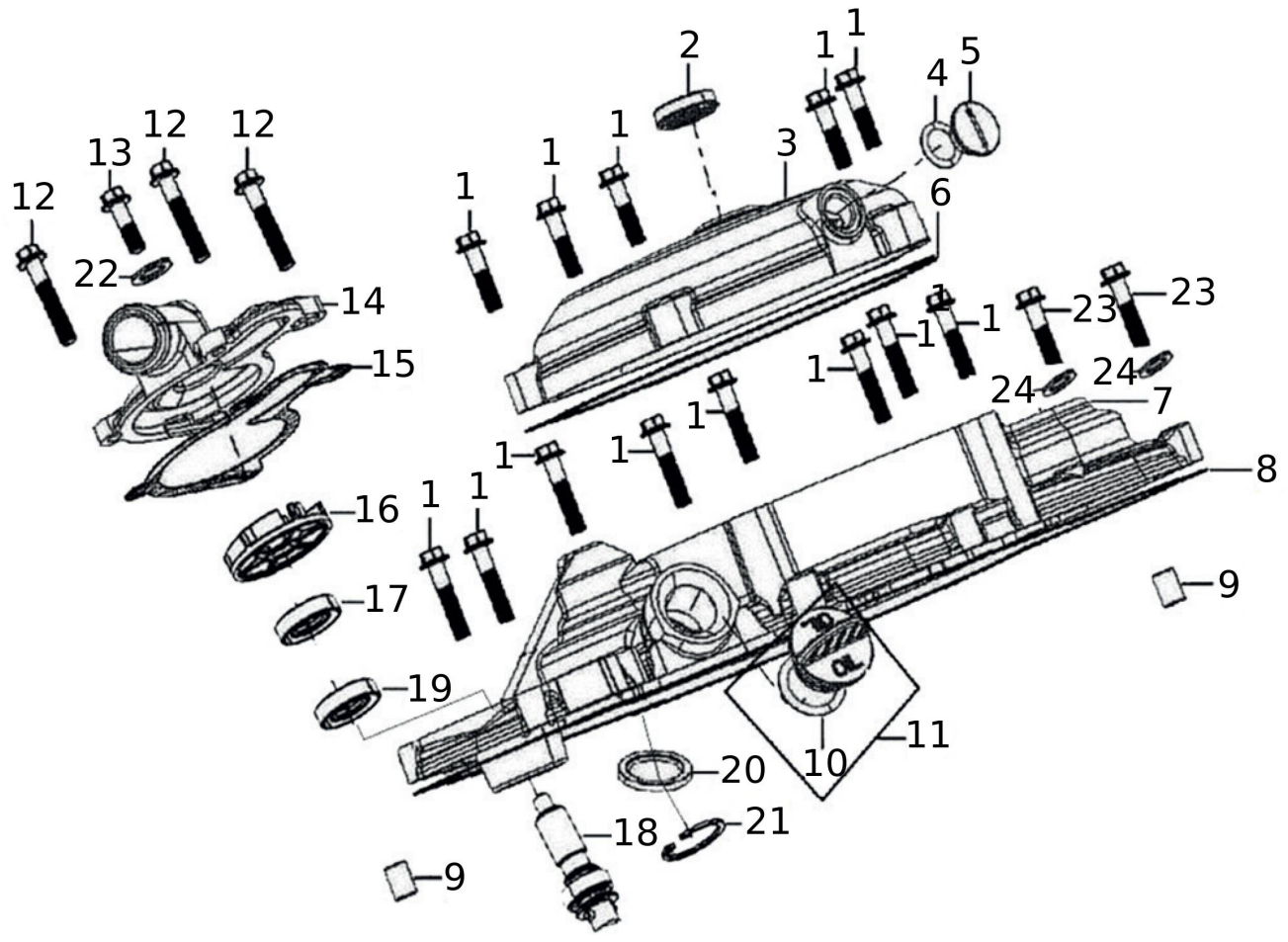




#	Code	Description	Specification	UM	Qty
1	NC250-0030	SPINA 13X14		pz	2
2	NC250-0031	GASKET ASSY CYLINDER HEAD		pz	1
3	NC250-0032	SCREW M6+ù20		pz	2
4	NC250-0033	CHAIN TENSIONER		pz	1
5	NC250-0034	CHAIN ??TENSIONER GASKET		pz	1
6	NC250-0035	CYLINDER 1		pz	1
7	NC250-0036	GASKET CYLINDER BLOCK		pz	1
8	NC250-0037	PIN 6+ù12		pz	2



#	Code	Description	Specification	UM	Qty
1	NC250-0038	VALVE LOCKER		pz	8
2	NC250-0039	SPRING SEAT		pz	4
3	NC250-0040	VALVE OUTER SPRING		pz	4
4	NC250-0041	VALVE STEM GASKET		pz	4
5	NC250-0042	OUTER VALVE SPRING RETAINER		pz	4
6	NC250-0043	VALVE, INTAKE		pz	2
7	NC250-0044	NUT VALVE CLEARANCE		pz	4
8	NC250-0045	SCREW VALVE CLEARANCE		pz	4
9	NC250-0046	ROCKER ARM ASSEMBLY		pz	1
10	NC250-0047	ROCKER SHAFT		pz	1
11	NC250-0048	ROCKER ARM ASSEMBLY		pz	1
12	NC250-0049	ROCKER SHAFT		pz	1
13	NC250-0050	VALVE, EXHAUST		pz	2
14	NC250-0051	GAMP SHAFT COMP		pz	1
15	NC250-0052	STOP PLATE CAMSHAFT		pz	1
16	NC250-0053	BEARING (CSB201_C3)		pz	2
17	NC250-0054	DECOMPR. ASSY		pz	1
18	NC250-0055	CAMSHAFT DECOMPRESSION SPRING		pz	1
19	NC250-0056	CENTRIFUGAL MASS ASSY		pz	1
20	NC250-0023	BOLT M6+ù10		pz	2
21	NC250-0057	WASHER 6.5+ù1.5+ù18		pz	1
22	NC250-0024	BOLT M6+ù16		pz	1
23	NC250-0058	STOP PLATE CAMSHAFT		pz	1
24	NC250-0059	RUBBER SEAL OF CYLINDER HEAD		pz	1
25	NC250-0060	CHAIN		pz	1
26	NC250-0061	TIMING CHAIN ??GUIDE		pz	1
27	NC250-0062	CHAIN ??TENSIONER SLIDE		pz	1
28	NC250-0063	TENSION CHAIN BUSH		pz	1
29	NC250-0064	BOLT M5+ù25		pz	1
30	NC250-0065	SCREW M6X22		pz	2
31	NC250-0007	WASHER 6.5+ù1.5+ù12		pz	2

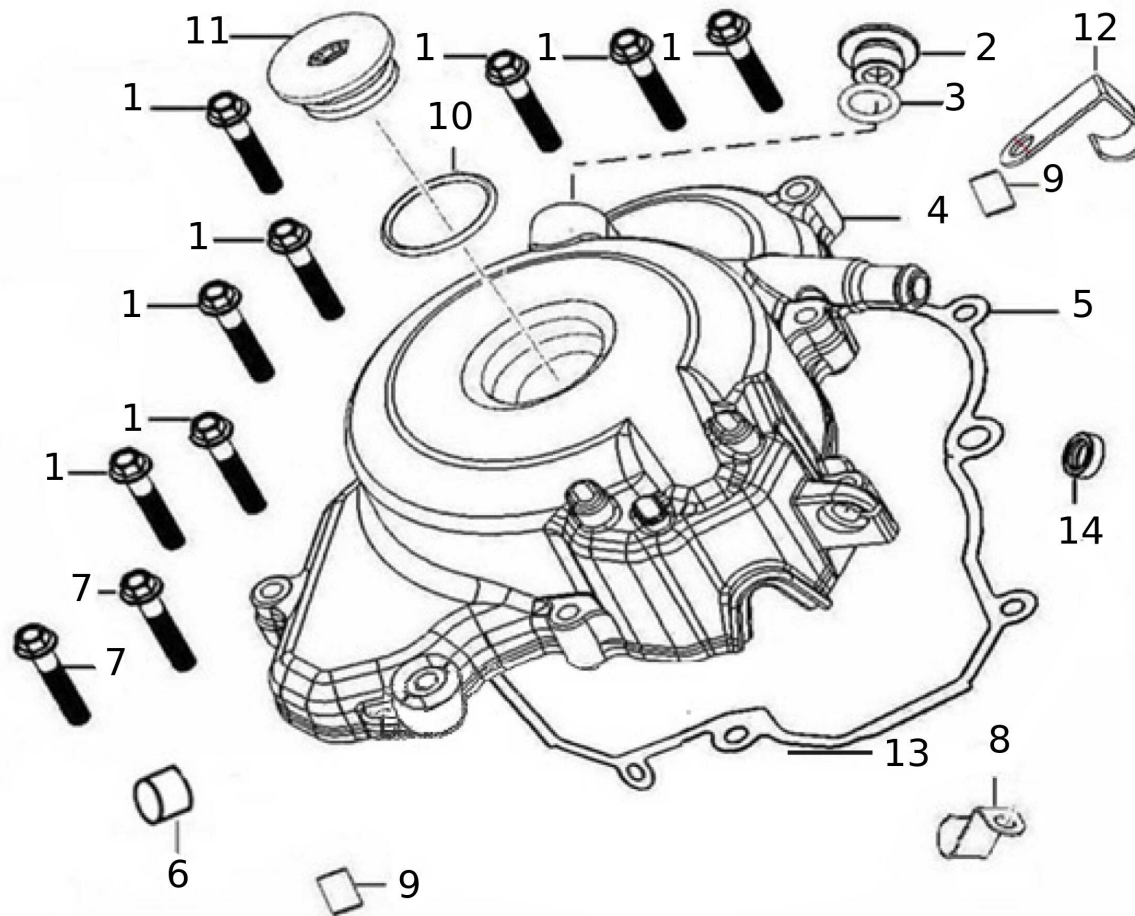


19 - Covers carter RH (XEF 250 TRAIL E5 MY21-MY22)

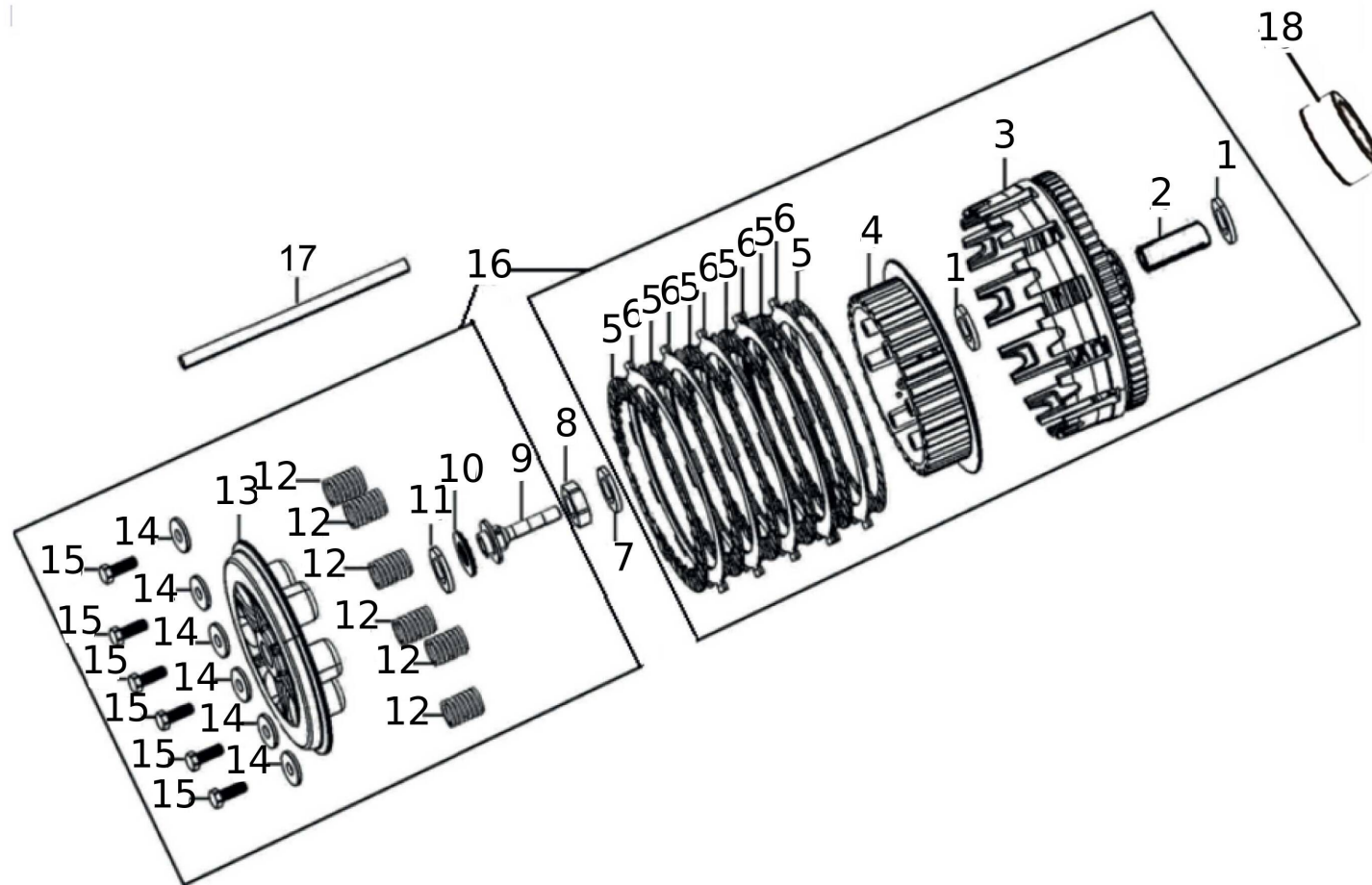


#	Code	Description	Specification	UM	Qty
1	NC250-0066	BOLT M6+ù30		pz	13
2	NC250-0067	OIL LEVEL SIGHT WINDOW		pz	1
3	NC250-0068	RIGHT CRANKCASE EXT COVER		pz	1
4	NC250-0069	O-RING 13.2+ù2.65		pz	1
5	NC250-0070	CAP SMALL VIEW HOLE		pz	1
6	NC250-0071	GASKET CRANKCASE COVER RIGHT		pz	1
7	NC250-0072	COVER CRANKCASE 3		pz	1
8	NC250-0073	GASKET R.CRANKCASE COVER		pz	1
9	NC250-0074	DOWEL PIN 9+ù13		pz	2
10	NC250-0075	O-RING 18+ù3.55		pz	1
11	NC250-0076	OIL PLUG ASSY		pz	1
12	NC250-0077	SCREW M6X35		pz	3
13	NC250-0032	SCREW M6+ù20		pz	1
14	NC250-0078	COVER, HOUSING		pz	1
15	NC250-0079	GASKET		pz	1
16	NC250-0080	WATER PUMP ROTOR		pz	1
17	NC250-0081	WATER PUMP GASKET		pz	1
18	NC250-0082	WATER PUMP SHAFT		pz	1
19	NC250-0083	OIL SEAL 12+ù24+ù6		pz	1
20	NC250-0084	OIL SEAL 14+ù24+ù7		pz	1
21	NC250-0085	RETAINING RING D24		pz	1
22	NC250-0007	WASHER 6.5+ù1.5+ù12		pz	1
23	NC250-0086	BOLT M6+ù30		pz	2
24	NC250-0087	O-RING D6		pz	2

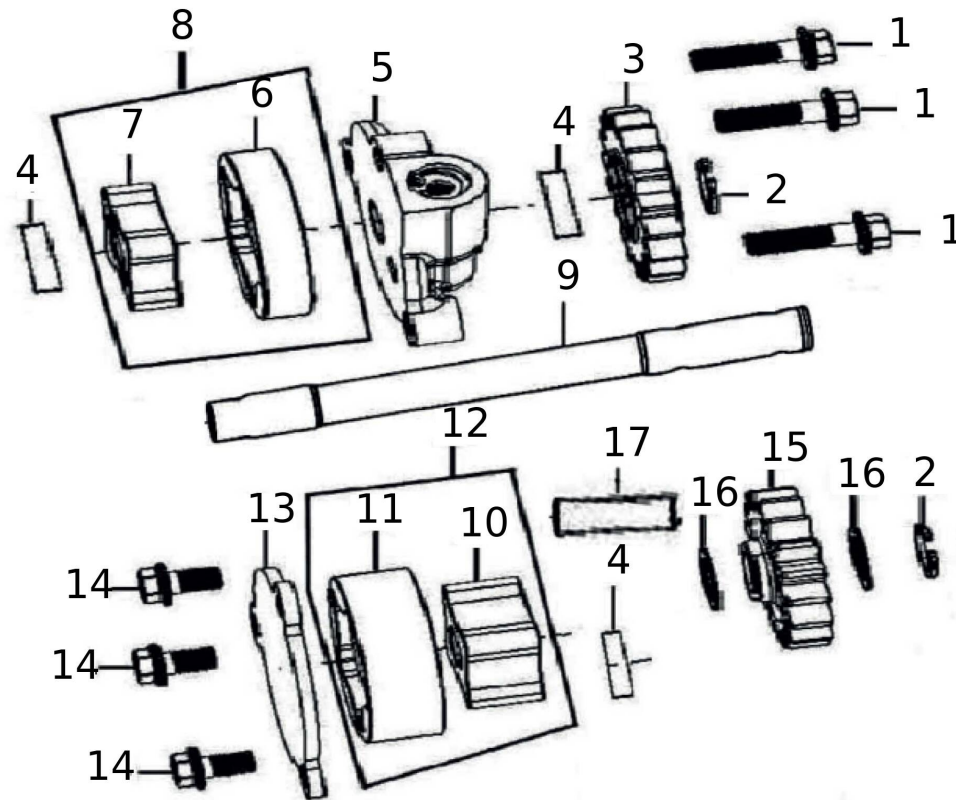




#	Code	Description	Specification	UM	Qty
1	NC250-0077	SCREW M6X35		pz	9
2	NC250-0010	PLUG		pz	1
3	NC250-0009	O-RING 11.8+ù2.6		pz	1
4	NC250-0088	COVER CRANKCASE 1		pz	1
5	NC250-0089	LEFT CRANKCASE GASKET		pz	1
6	NC250-0090	SEAL, DUST		pz	1
7	NC250-0091	OIL SEAL 10+ù18+ù6		pz	1
8	NC250-0092	FIXING PLATE MAGNETO CABLE		pz	1
9	NC250-0074	DOWEL PIN 9+ù13		pz	2
10	NC250-0093	O-RING 22.5+ù3.55		pz	1
11	NC250-0094	CAP BIG VIEW HOLE		pz	1
12	NC250-0095	RUBBER PIPE HOLDER		pz	1
13	05064005	BACK PART L.CRANKCASE COVER		pz	1

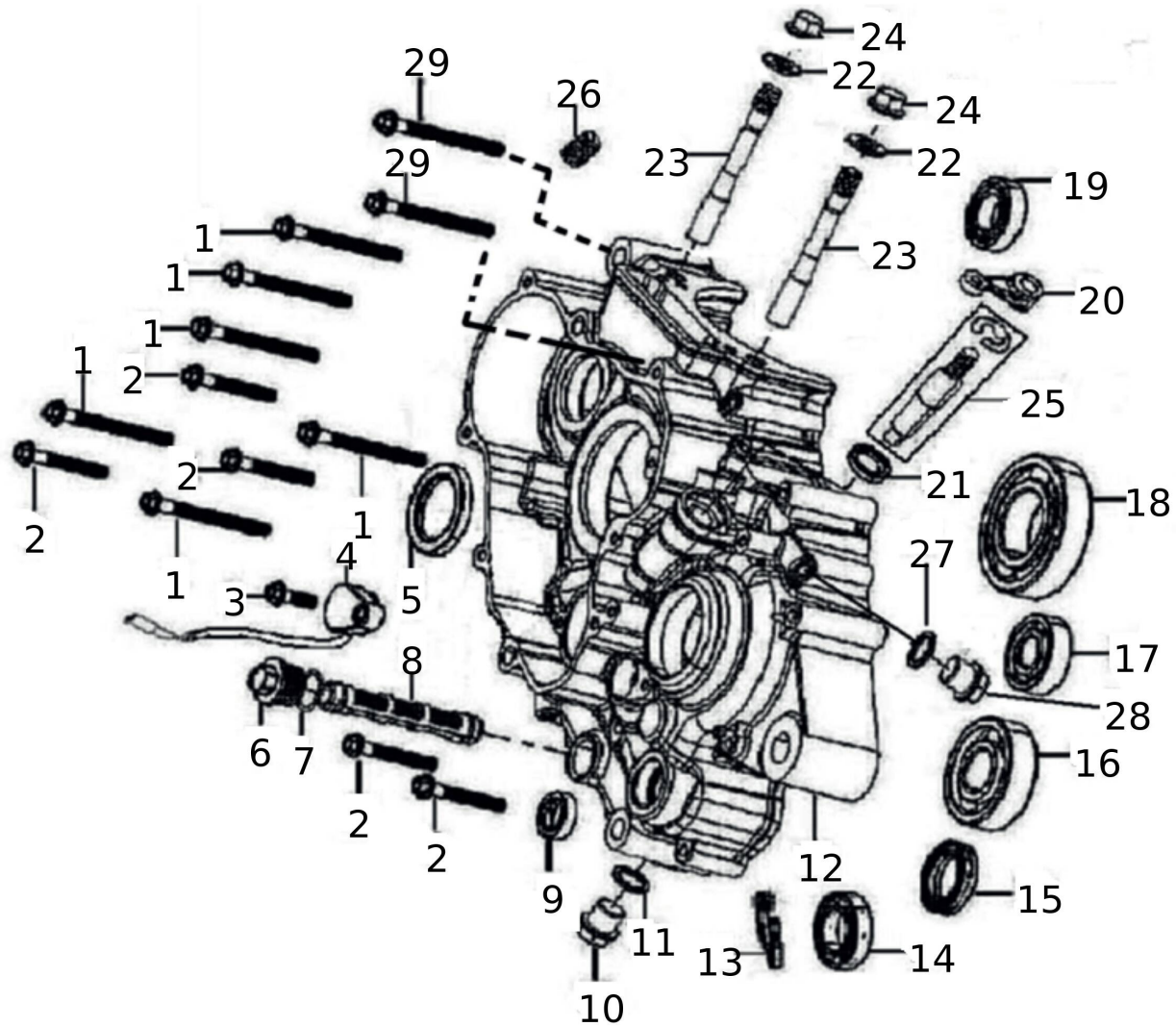


#	Code	Description	Specification	UM	Qty
1	NC250-0097	WASHER 20.2+ù1.8+ù34		pz	2
2	NC250-0098	SLEEVE CLUTCH		pz	1
3	NC250-0099	PRIMARY DRIVEN GEAR COMP		pz	1
4	NC250-0100	CENTER SLEEVE CLUTCH		pz	1
5	NC250-0101	DRIVING FRICTION DISK		pz	6
6	NC250-0102	PLATE, CLUTCH 2		pz	5
7	NC250-0103	STOP WASHER CLUTCH		pz	1
8	NC250-0104	DADO M16		pz	1
9	NC250-0105	ROD CLUTCH PUSH		pz	1
10	NC250-0106	BEARING (AXK1528)		pz	1
11	NC250-0107	WASHER 15+ù1+ù28		pz	1
12	NC250-0108	KIT CLUTCH SPRING		pz	6
13	NC250-0109	PLATE, PRESSURE 1		pz	1
14	NC250-0110	CLUTCH SPRING SEAT		pz	6
15	NC250-0111	BOLT M5+ù25		pz	6
16	NC250-0112	CLUTCH ASSY		pz	1
17	NC250-0113	PUSHING ROD CLUTCH		pz	1
18	NC250-0114	NEEDLE BEARING (K25+ù29+ù13)		pz	2

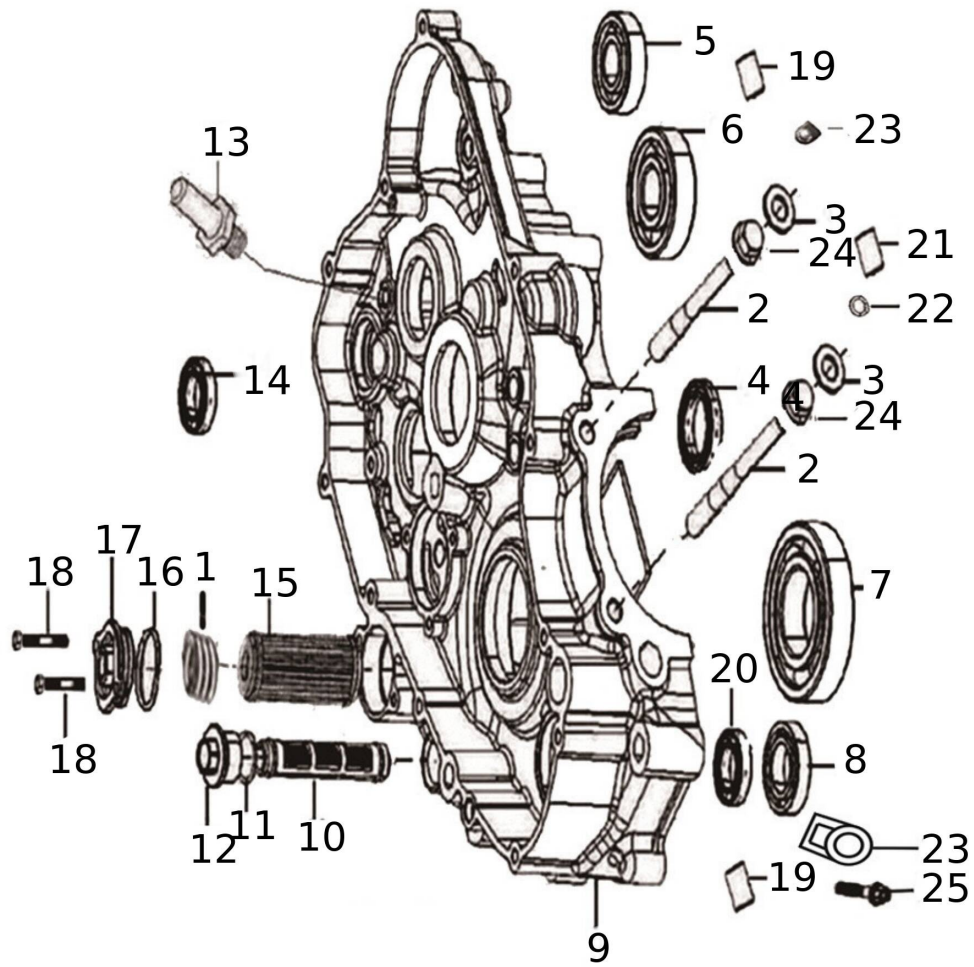


#	Code	Description	Specification	UM	Qty
1	NC250-0115	BOLT M5+ù18		pz	3
2	NC250-0116	RETAINING RING D10		pz	2
3	NC250-0117	GEAR,OIL PUMP DRIVE SHAFT		pz	1
4	NC250-0118	PIN D4+ù15.8		pz	3
5	NC250-0119	OIL PUMP COVER		pz	1
6	NC250-0120	OUTER ROTOR OIL PUMP		pz	1
7	NC250-0121	INNER ROTOR OIL PUMP		pz	1
8	NC250-0122	OIL PUMP ROTOR		pz	1
9	NC250-0123	OIL PUMP SHAFT		pz	1
10	NC250-0124	INNER ROTOR OIL PUMP		pz	1
11	NC250-0125	OUTER ROTOR OIL PUMP		pz	1
12	NC250-0126	OIL PUMP ROTOR		pz	1
13	NC250-0127	OIL PUMP COVER		pz	1
14	NC250-0128	BOLT M5+ù12		pz	3
15	NC250-0129	GEAR,OIL PUMP DRIVE SHAFT		pz	1
16	NC250-0130	WASHER 10.2+ù0.5+ù15		pz	2
17	NC250-0131	OIL PUMP SHAFT		pz	1

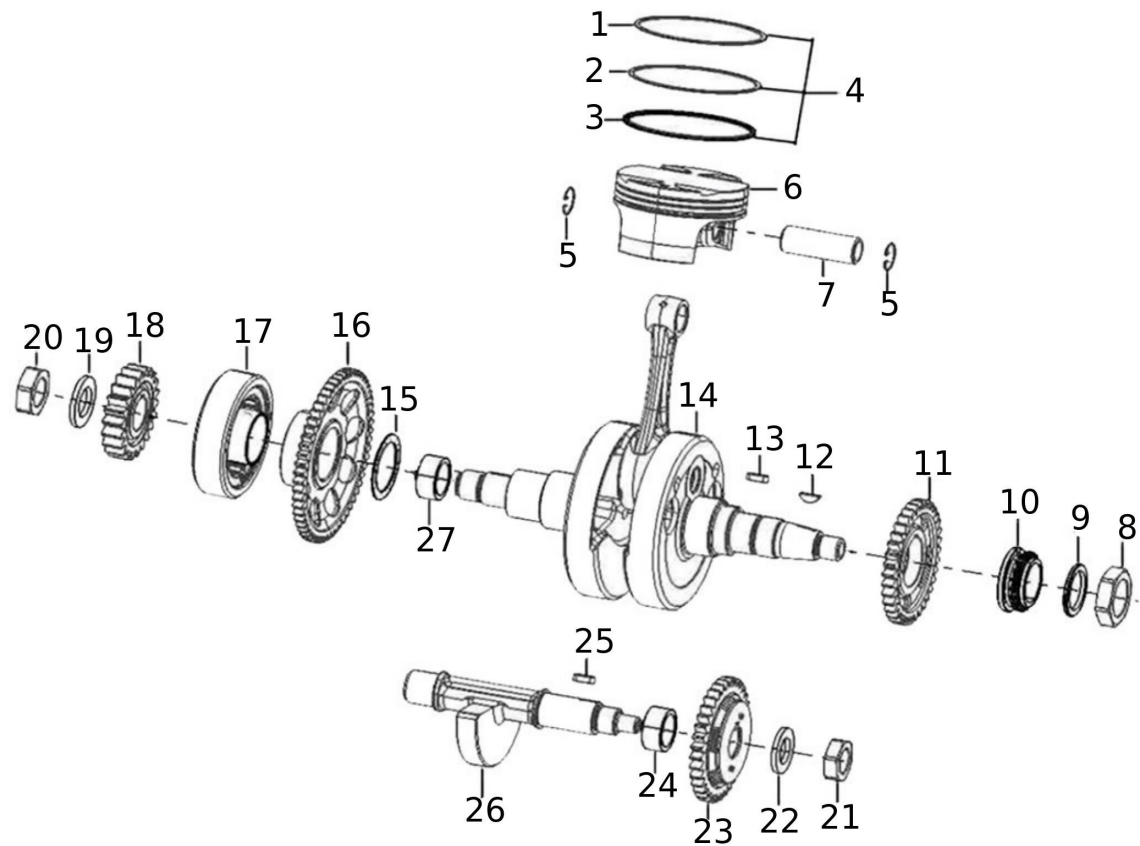




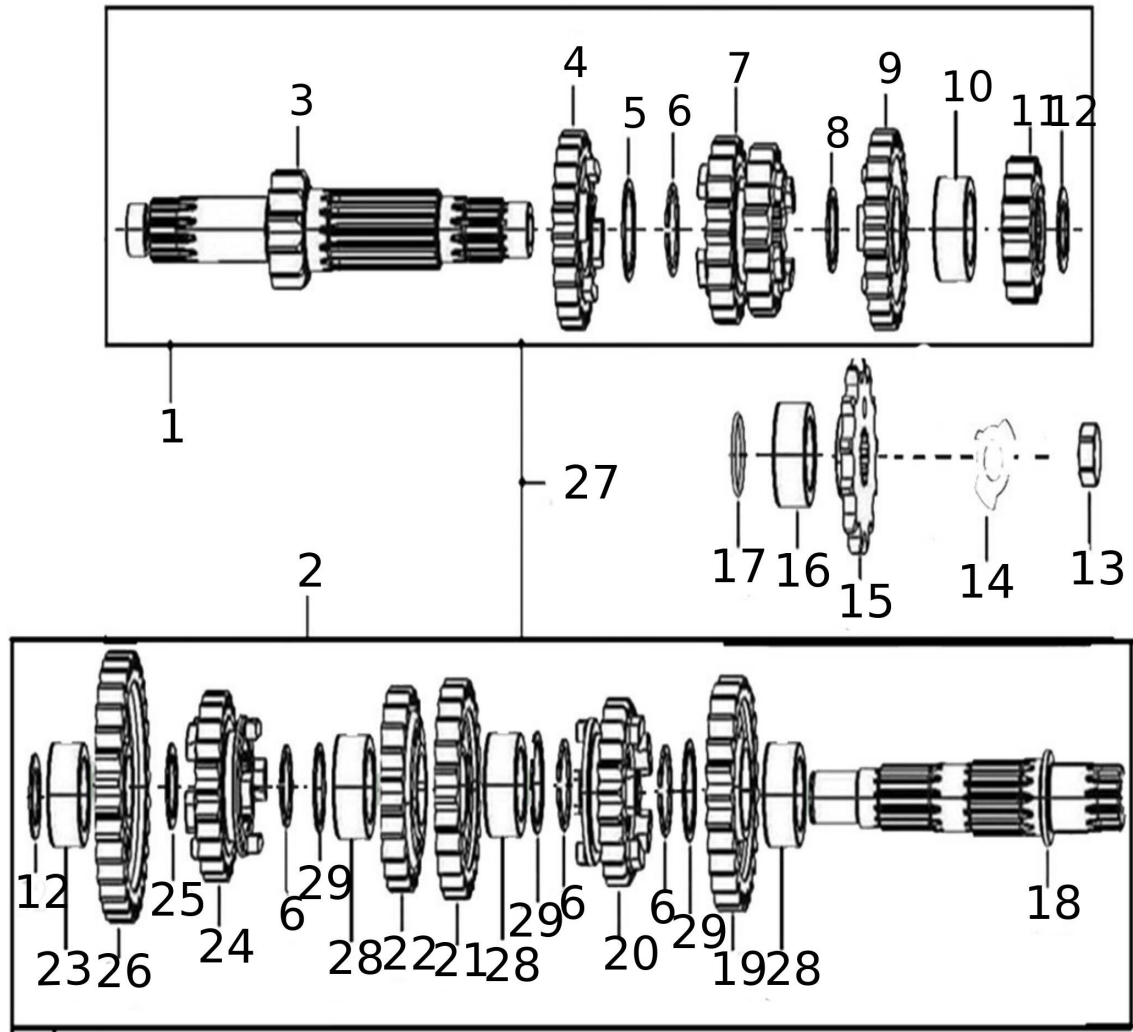
#	Code	Description	Specification	UM	Qty
1	NC250-0132	VITE M6X65		pz	8
2	NC250-0133	BOLT M6+ù45		pz	5
3	NC250-0134	SCREW M6+ù20		pz	1
4	NC250-0135	GEARSHIFT SWITCH		pz	1
5	NC250-0136	OIL SEAL 32+ù47+ù6		pz	1
6	NC250-0137	OIL FILTER CAP		pz	1
7	NC250-0138	O-RING 17.5+ù1.8		pz	1
8	NC250-0139	STRAINER OIL FILTER		pz	1
9	NC250-0140	OIL SEAL 15+ù25+ù5		pz	1
10	NC250-0141	OIL DRAIN BOLT		pz	1
11	NC250-0142	WASHER 16.5+ù2+ù23		pz	1
12	NC250-0143	LEFT CRANKCASE BLOCK		pz	1
13	NC250-0144	RETAINING RING D28		pz	1
14	NC250-0145	BEARING (61902)		pz	1
15	NC250-0146	BEARING(61805)		pz	1
16	NC250-0147	BEARING(63/22JR2C3)		pz	1
17	NC250-0148	BEARING(6203JR2C3)		pz	1
18	NC250-0149	BEARING(6207JR2C3SPX1)		pz	1
19	NC250-0150	BEARING(CSB204_JR2C3)		pz	1
20	NC250-0151	CLUTCH ROCKER ARM		pz	1
21	NC250-0152	OIL SEAL 14+ù22+ù5		pz	1
22	NC250-0153	WASHER 10.5+ù2+ù20		pz	2
23	NC250-0154	CRANKCASE BOLT		pz	2
24	NC250-0155	NUT		pz	2
25	NC250-0156	CLUTCH SEPARATING ROD		pz	1
26	NC250-0157	OIL NOZZLE		pz	1
27	NC250-0158	RONDELLA 8.5X1.2X15		pz	1
28	NC250-0159	BOLT M8+ù10		pz	1
29	NC250-0160	PIASTRA FISSAGGIO		pz	1
30	NC250-0023	BOLT M6+ù10		pz	1



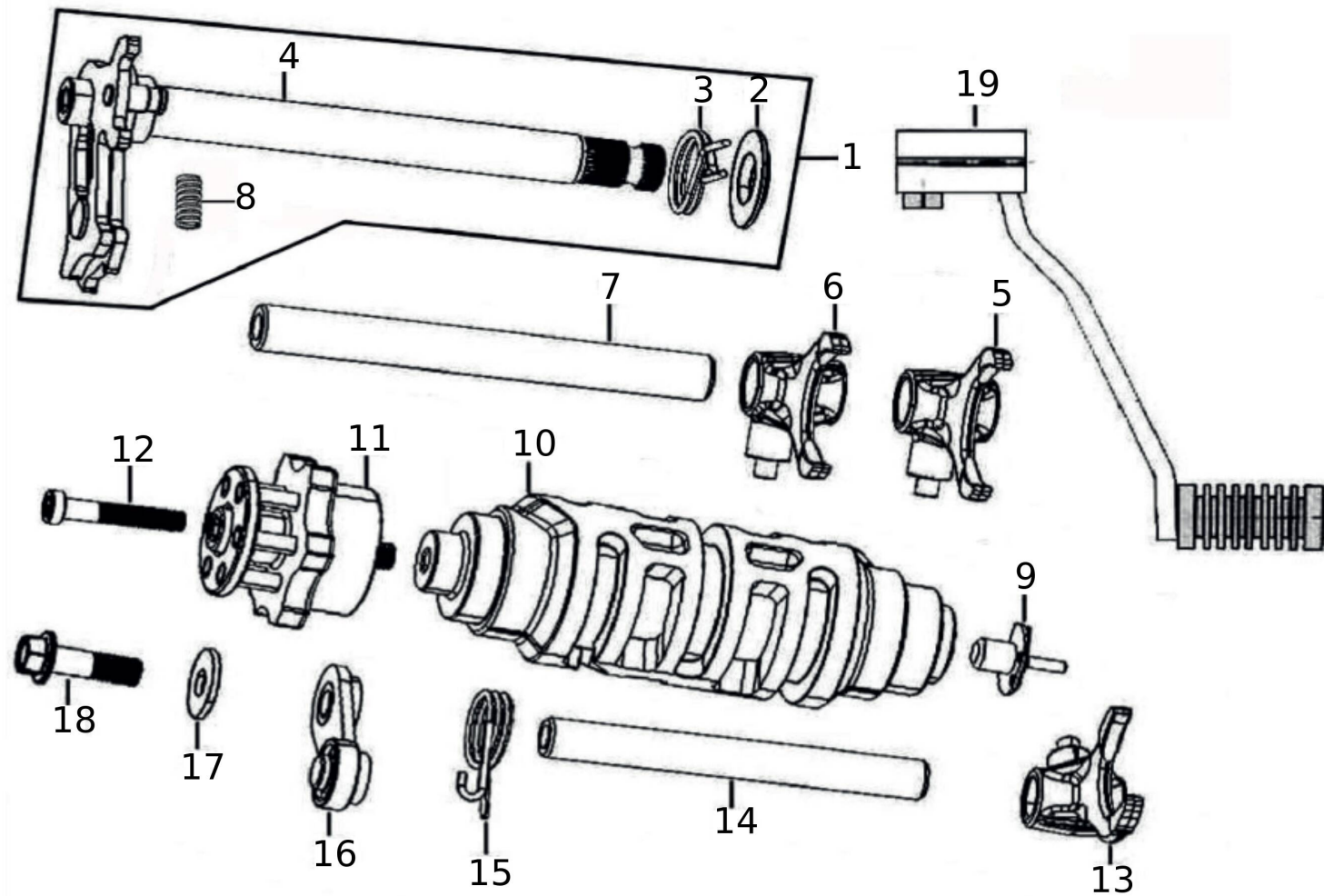
#	Code	Description	Specification	UM	Qty
1	NC250-0161	SPRING OIL FINE FILTER		pz	1
2	NC250-0154	CRANKCASE BOLT		pz	2
3	NC250-0153	WASHER 10.5+ù2+ù20		pz	2
4	NC250-0146	BEARING(61805)		pz	1
5	NC250-0148	BEARING(6203JR2C3)		pz	1
6	NC250-0162	BEARING (6304)		pz	1
7	NC250-0163	BEARING (6207JR2LUC3)		pz	1
8	NC250-0150	BEARING(CSB204_JR2C3)		pz	1
9	NC250-0164	CRANKCASE 2		pz	1
10	NC250-0139	STRAINER OIL FILTER		pz	1
11	NC250-0138	O-RING 17.5+ù1.8		pz	1
12	NC250-0137	OIL FILTER CAP		pz	1
13	NC250-0165	BOLT RETURN SPRING FIXING		pz	1
14	NC250-0145	BEARING (61902)		pz	1
15	NC250-0166	OIL FINE FILTER		pz	1
16	NC250-0167	O-RING 30+ù2.6		pz	1
17	NC250-0168	CAP OIL FINE FILTER		pz	1
18	NC250-0024	BOLT M6+ù16		pz	2
19	NC250-0030	SPINA 13X14		pz	2
20	NC250-0169	OIL SEAL 20+ù35+ù5		pz	1
21	NC250-0170	DOWEL PIN 8+ù12+ù6.3		pz	1
22	NC250-0171	O-RING 6.5+ù1.9		pz	1
23	NC250-0160	PIASTRA FISSAGGIO		pz	2
24	NC250-0155	NUT		pz	2
25	NC250-0023	BOLT M6+ù10		pz	2



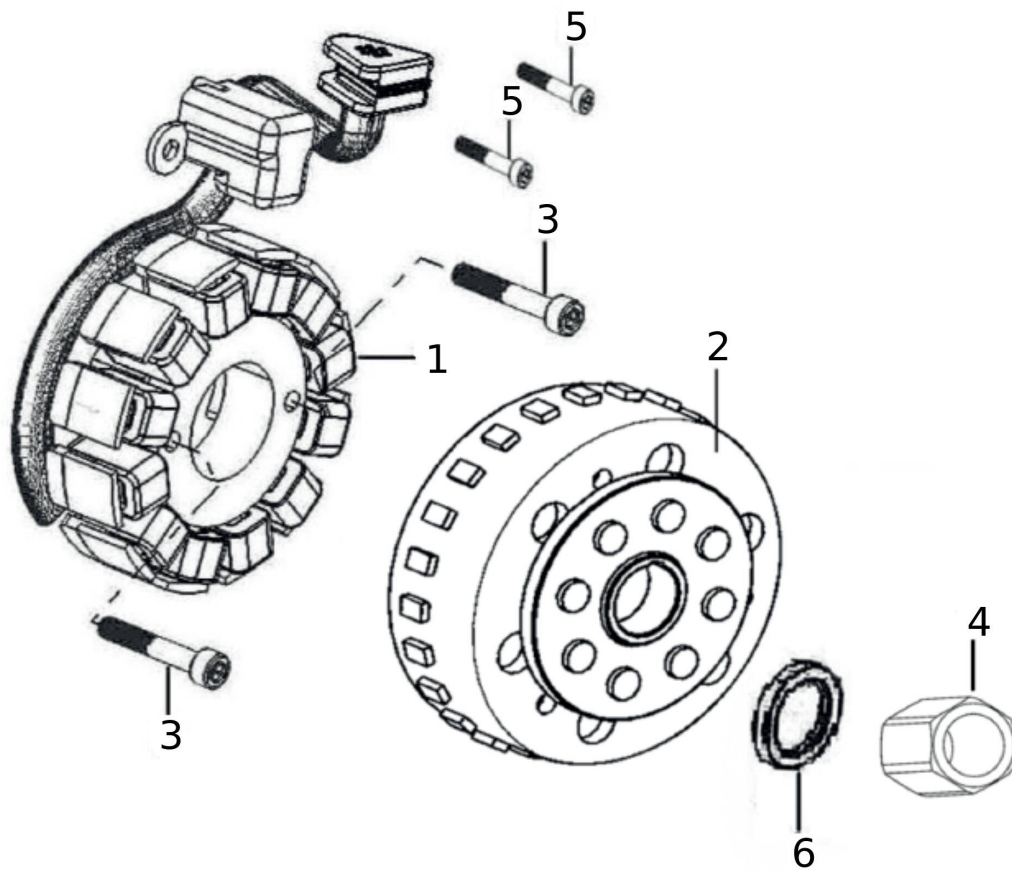
#	Code	Description	Specification	UM	Qty
1	NC250-0172	PISTON RING 1		pz	1
2	NC250-0173	PISTON RING 2		pz	1
3	NC250-0174	PISTON OIL RING		pz	1
4	NC250-0175	PISTON RING SET (STD)		pz	1
5	NC250-0176	CHECK RING PISTON PIN		pz	2
6	NC250-0177	PISTON (STD)		pz	1
7	NC250-0178	PISTON PIN		pz	1
8	NC250-0179	DADO M24		pz	1
9	NC250-0180	RONDELLA 24.2X2.5X32		pz	1
10	NC250-0181	TIMING CHAIN ??SPROCKET		pz	1
11	NC250-0182	BALANCE SHAFT DRIVING GEAR		pz	1
12	NC250-0183	SEMICIRCULAR KEY		pz	1
13	NC250-0184	TABULATE KEY		pz	1
14	NC250-0185	CRANKSHAFT CONNECTING-ROD ASSY		pz	1
15	NC250-0186	WASHER 23+ù1+ù40		pz	1
16	NC250-0187	PLATE GEAR ASSY		pz	1
17	NC250-0188	OVERRUNNING CLUTCH		pz	1
18	NC250-0189	PRIMARY DRIVE GEAR		pz	1
19	NC250-0190	CRANKSHAFT STOP WASHER		pz	1
20	NC250-0191	NUT M18		pz	1
21	NC250-0104	DADO M16		pz	1
22	NC250-0192	RONDELLA A TAZZA CONTRALBERO		pz	1
23	NC250-0193	BALANCE SHAFT DRIVEN GEAR		pz	1
24	NC250-0194	BALANCE SHAFT BUSH		pz	1
25	NC250-0195	TABULATE KEY		pz	1
26	NC250-0196	SHAFT 1		pz	1
27	NC250-0197	NEEDLE BEARING (K29+ù33+ù20)		pz	1



#	Code	Description	Specification	UM	Qty
1	NC250-0198	MAIN SHAFT TRANSMISSION ASSY		pz	1
2	NC250-0199	COUTERSHAFT TRANSMISSION ASSY		pz	1
3	NC250-0200	MAIN SHAFT TRANSMISSION		pz	1
4	NC250-0201	GEAR M-5		pz	1
5	NC250-0202	WASHER 25.1+ù1+ù30		pz	1
6	NC250-0203	CIRCLIP	Engine 5Jxxxxx	pz	4
7	NC250-0204	GEAR M-3 M-4		pz	1
8	NC250-0205	WASHER 20.2+ù1+ù28		pz	1
9	NC250-0206	GEAR M-6		pz	1
10	NC250-0207	CUSCINETTO A RULLINI K20X24X10		pz	1
11	NC250-0208	INGRANAGGIO M-2		pz	1
12	NC250-0209	WASHER 17.1+ù1+ù26		pz	2
13	NC250-0210	SPROCKET NUT		pz	1
14	NC250-0211	SPROCKET STOP WASHER		pz	1
15	05214005	PINION NC250 Z=14		pz	1
16	NC250-0212	SPROCKET BUSH		pz	1
17	NC250-0213	O-RING 21+ù2		pz	1
18	NC250-0214	ALBERO SECONDARIO CAMBIO		pz	1
19	NC250-0215	GEAR C-2		pz	1
20	NC250-0216	GEAR C-6		pz	1
21	NC250-0217	GEAR C-3		pz	1
22	NC250-0218	GEAR C-4		pz	1
23	NC250-0219	METAL BUSH		pz	1
24	NC250-0220	GEAR C-5		pz	1
25	NC250-0221	WASHER 19+ù1+ù26		pz	1
26	NC250-0222	GEAR C-1		pz	1
27	NC250-0223	TRANSMISSION COMPLETE KIT		pz	1
28	NC250-0224	NEEDLE BEARING (KS22+ù26+ù10TN)		pz	3
29	NC250-0225	WASHER PLATE		pz	3

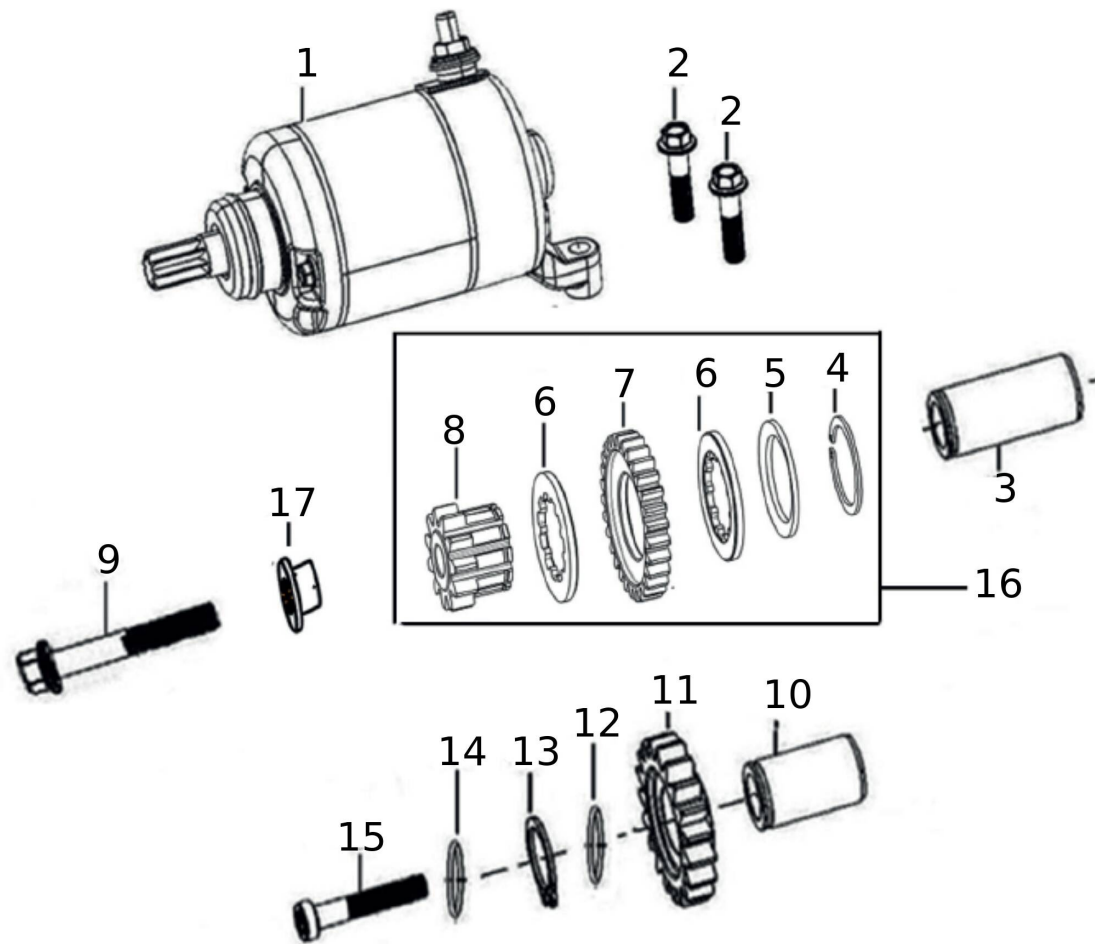


#	Code	Description	Specification	UM	Qty
1	NC250-0226	GEARSHIFT SHAFT COMP		pz	1
2	NC250-0227	AXLE SLEEVE		pz	1
3	NC250-0228	RETURN SPRING GEARBOX		pz	1
4	NC250-0229	GEARSHIFT SHAFT		pz	1
5	NC250-0230	RIGHT FORK		pz	1
6	NC250-0231	LEFT FORK		pz	1
7	NC250-0232	PERNO GUIDA FORCHETTE		pz	1
8	NC250-0233	MOLLA ALBERO COMANDO		pz	1
9	NC250-0234	CONTACT GEAR INDICATION		pz	1
10	NC250-0235	GEARSHIFT DRUM COMP		pz	1
11	NC250-0236	STOPPING PLATE		pz	1
12	NC250-0237	SCREW M6X35		pz	1
13	NC250-0238	GUIDE PIN CENTER FORK		pz	1
14	NC250-0239	PERNO GUIDA FORCHETTA CENTRALE		pz	1
15	NC250-0240	SPRING LOCATING PLATE		pz	1
16	NC250-0241	LOCATING PLATE		pz	1
17	NC250-0057	WASHER 6.5+ù1.5+ù18		pz	1
18	NC250-0032	SCREW M6+ù20		pz	1
19	04034005	LEVER		pz	1

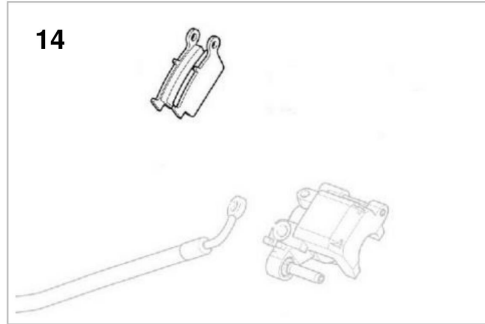
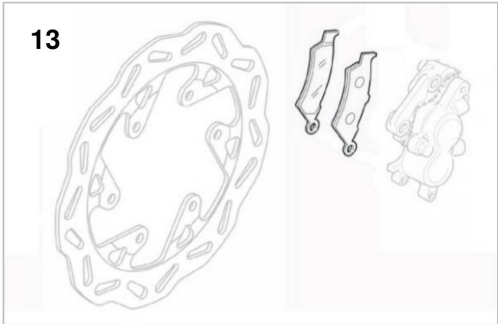
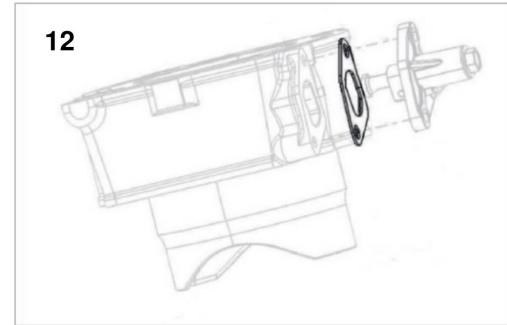
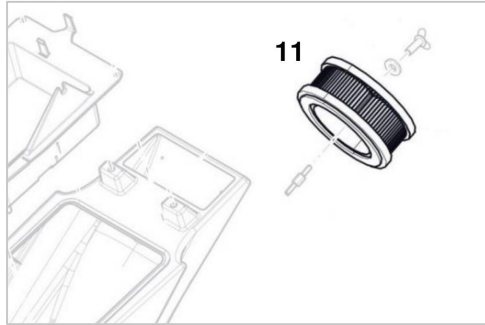
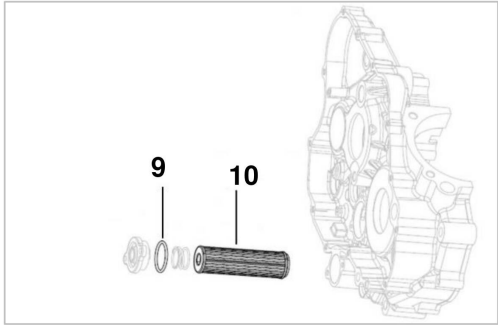
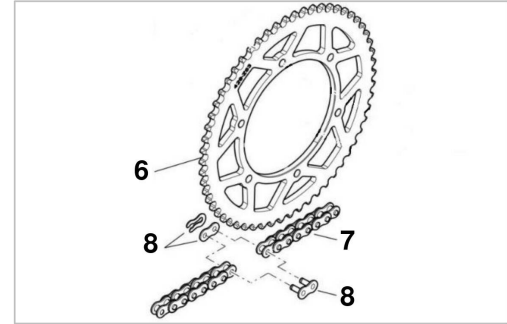
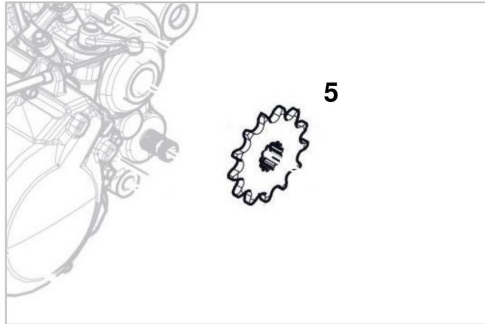
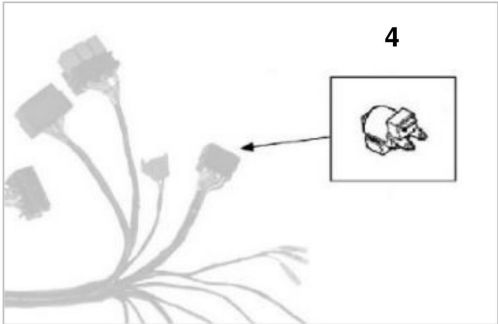
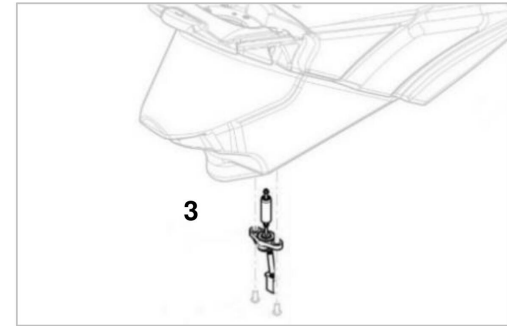
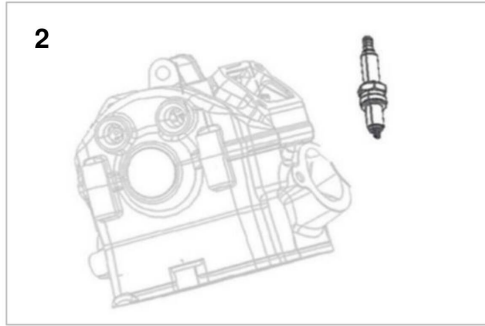
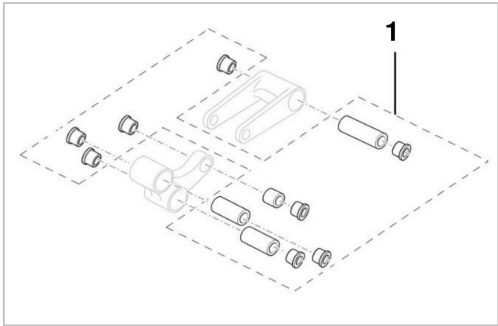


#	Code	Description	Specification	UM	Qty
1	NC250-0242	STATOR ASSY MAGNETO		pz	1
2	NC250-0243	ROTOR ASSY MAGNETO		pz	1
3	NC250-0244	BOLT M5+ù30		pz	2
4	NC250-0245	NUT M14+ù1.5		pz	1
5	NC250-0246	BOLT M5+ù10		pz	2
6	NC250-0247	RONDELLA 15.2X1.5X25		pz	1

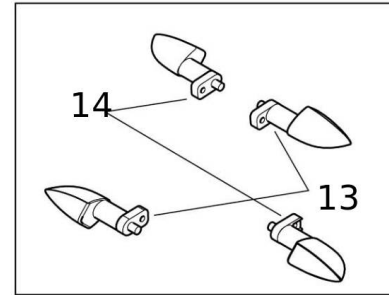
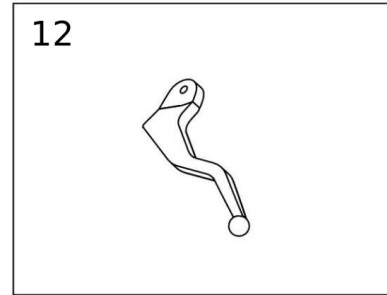
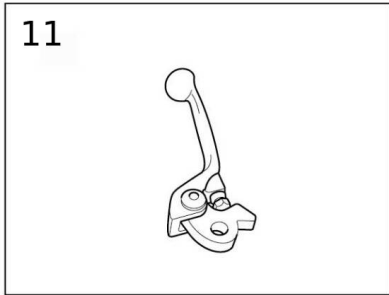
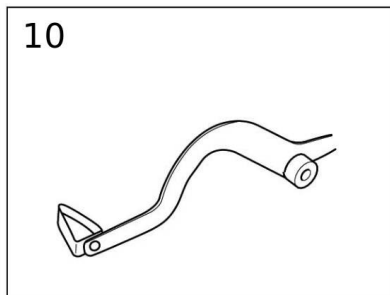
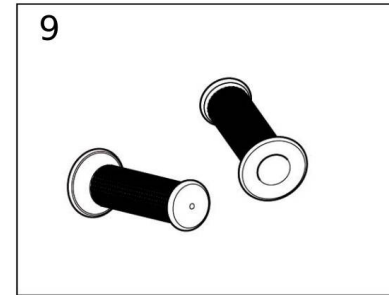
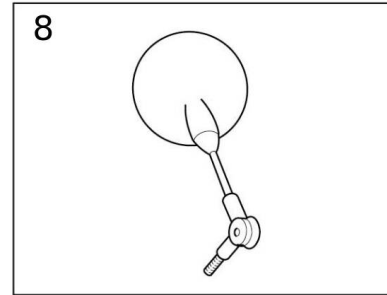
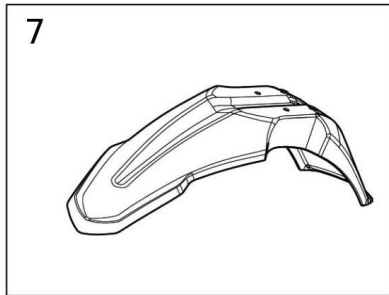
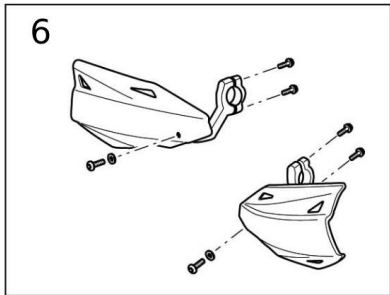
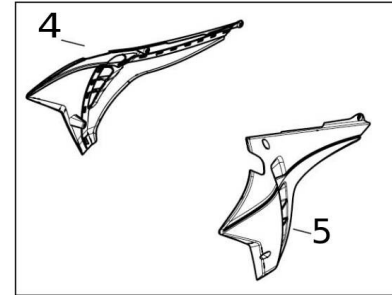
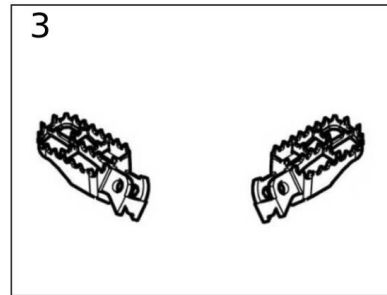
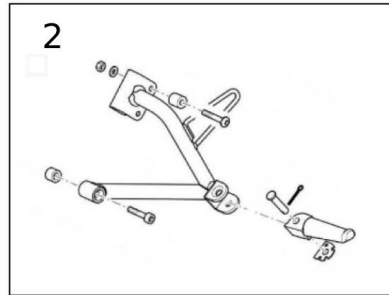
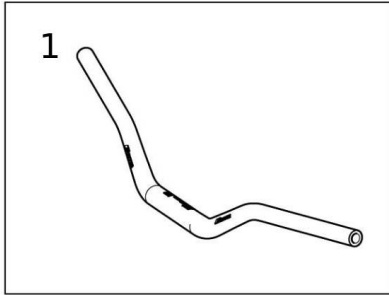




#	Code	Description	Specification	UM	Qty
1	NC250-0248	MOTOR ASSY	Engine 8xxxxxx	pz	1
1	NC250-0270	MOTOR ASSY	Engine 5Jxxxxx	pz	1
	NC250-0271	STARTER MOTOR SET		pz	1
2	NC250-0012	BOLT M6+ù25		pz	2
3	NC250-0249	SHAFT REDUCTION		pz	1
4	NC250-0203	CIRCLIP	Engine 5Jxxxxx	pz	1
5	NC250-0250	DISH WASHER 25.5+ù2+ù41	Engine 5Jxxxxx	pz	1
6	NC250-0251	KINETIC FRICTION SLICES	Engine 5Jxxxxx	pz	2
7	NC250-0252	WHEEL STARTER	Engine 5Jxxxxx	pz	1
8	NC250-0253	REDUCTION SHAFT SLEEVE	Engine 5Jxxxxx	pz	1
9	NC250-0254	BOLT M6+ù50		pz	1
10	NC250-0255	SHAFT REDUCTION		pz	1
11	NC250-0256	REDUCTION SHAFT SLEEVE		pz	1
12	NC250-0257	WASHER 15.2+ù0.5+ù23		pz	1
13	NC250-0258	RETAINING RING D15		pz	1
14	NC250-0259	WASHER D6		pz	1
15	NC250-0260	VITE M6X40		pz	1
16	NC250-0261	GEAR REDUCTION ASSY	Engine 5Jxxxxx	pz	1
	NC250-0271	STARTER MOTOR SET		pz	1
16	NC250-0269	GEAR REDUCTION ASSY	Engine 8xxxxxx	pz	1
17	NC250-0262	DUPLEX GEAR		pz	1



#	Code	Description	Specification	UM	Qty
1	02057005	KIT REVISIONE GRUPPO LEVERAGGIO		pz	1
2	02054005	SPARK PLUG 125 LC STANDARD		pz	1
3	04830005	PROBE		pz	1
4	05267005	STARTING RELAY 250-450 30A		pz	1
5	05214005	PINION NC250 Z=14		pz	1
6	05061005	REAR SPROCKET 520 Z50 ERGAL GOLD MY19		pz	1
7	04062005	CHAIN		pz	1
8	02356005	JOINT FOR CHAIN 428		pz	1
9	NC250-0167	O-RING 30+ù2.6		pz	1
10	NC250-0166	OIL FINE FILTER		pz	1
11	04345005	PAPER AIR FILTER 125 4T		pz	1
12	NC250-0034	CHAIN ??TENSIONER GASKET		pz	1
13	04256005	BRAKE PADS-FRON TL250		pz	1
14	02128005	REAR BRAKE PADS BRAKING (2009)		pz	1
15	09223020	SCREW SET TL-CAB		pz	1



#	Code	Description	Specification	UM	Qty
1	05403005	RED HANDLEBAR Ø28		pz	1
	V2488005	RED ANODIZED HANDLEBAR TL50-125MY25		pz	1
2	V1789020	TL MY23 PASSENGER FOOTPEG KIT SPARE PARTS		pz	1
3	00008005	FOOTBOARDS		pz	1
4	09763005	RADIATOR COVER RIGHT WHITE MY23	White	pz	1
4	09903005	RADIATOR COVER RIGHT BLACK MY23	Black	pz	1
5	09764005	RADIATOR COVER LEFT WHITE TL50/125 MY23	White	pz	1
5	09904005	RADIATOR COVER LEFT BLACK TL50/125 MY23	Black	pz	1
6	02163005	HANDGUARD (WHITE) WITHOUT STICKER		pz	1
6	04194005	HANDGUARD (BLACK) WITHOUT STICKER		pz	1
7	07500005	FRONT FENDER OFF-ROAD WHITE	White	pz	1
7	07504005	MUDGUARD	Black	pz	1
8	00222005	REAR-VIEW MIRROR 50/125 RH THREAD		pz	2
9	00259005	PAIR OF BLACK KNOBS		pz	1
10	04039005	REAR BRAKE PEDAL TL125-250		pz	1
	V1805005	COMPLETE REAR BRAKE PEDAL TL125-250 MY25		pz	1
11	09873005	FRONT BRAKE LEVER COMPETITION MY23		pz	1
12	01037005	CLUTCH LEVER		pz	1
13	09795005	DIRECTION IND. ARROW FRONT RH / REAR LH		pz	1
14	09796005	DIRECTION IND. ARROW FRONT LH / REAR RH		pz	1