



# PCD INSERTS

PCD Tipped Inserts  
PCD Inserts With Chip Breaker  
PCD Inserts With Full Edge  
PCD Custom-made Inserts

Overview		A01	-	A04
Code		A05	-	A06
PCD Tipped Inserts	CCGW(T)/CCMW(T) TCGW(T)/TCMW(T) VBGW(T)/VCGW(T) APKW/APKT	DCGW(T)/DCMW(T) TPGN(X)/TPMN(X) WCGW(T)/WCMW(T)	A07	- A13
PCD Inserts With Chip Breaker	VBGW(T)/VBMW(T) CCGW/CCMW WCGW/WCMW	TCGW/TCMW DCGW/DCMW	A14	- A16
PCD Inserts With Full Edge	CCGW CCGT SCGW TCGW TCGT		A17	- A19
PCD Custom-made Inserts			A20	

## A

PCD  
INSERTS

## B

CBN  
INSERTS

## C

SOLID CBN  
INSERTS

## D

PCD  
MILLING  
CUTTERS

## E

PCD  
DRILLING  
TOOLS

## F

PCD  
REAMERS

## G

DIAMOND  
DRESSERS

## H

DIAMOND  
CUSTOM-MADE  
TOOLS

## Overview

PCD inserts have a diamond layer on the surface of a carbide base, bonded at high temperatures and pressures with a binding agent. The bonded diamond coating makes the cutting surface and edges of the tool extremely hard and durable, suitable for a wide range of precision cutting operations, including CNC turning and finishing of non-ferrous metals. PCD inserts are now commonly used across various machining and cutting processes in industry sectors ranging from woodworking and furniture manufacture to high-speed manufacturing of aviation components and other special alloy parts.

Sundi Tools offers a complete range of PCD inserts for machining non-ferrous metals, designed to significantly increase tool life, achieve a uniform surface finish, and provide excellent dimensional control, resulting in higher productivity and cost reduction throughout the manufacturing process.





## The Advantages of PCD inserts

- Consistent uniform wear, excellent thermal stability, and ultimate wear
- Delivers unparalleled part quality over long production runs
- Minimizes machine downtime
- Cost-effective in the production
- Long tool life
- Resistance

PCD tools are highly resistant to wear and durable, making them effective for cutting through tough materials. The addition of carbide bases provides strength and stability to the structure, making PCD tools ideal for precision cutting. The fine finish obtained by PCD polishing is often referred to as a "diamond" finish.

Due to their durability, PCD tools maintain sharp edges much longer than traditional tools, leading to an excellent lifespan while maintaining high cutting and polishing accuracy. Additionally, they can be used to cut materials at high speeds, increasing removal rates and reducing machining time.

**A**

PCD  
INSERTS

**B**

CBN  
INSERTS

**C**

SOLID CBN  
INSERTS

**D**

PCD  
MILLING  
CUTTERS

**E**

PCD  
DRILLING  
TOOLS

**F**

PCD  
REAMERS

**G**

DIAMOND  
DRESSERS

**H**

DIAMOND  
CUSTOM-MADE  
TOOLS

## B

CBN  
INSERTS

C

## SOLID CBN INSERTS

D

## PCD MILLING CUTTERS

E

## F

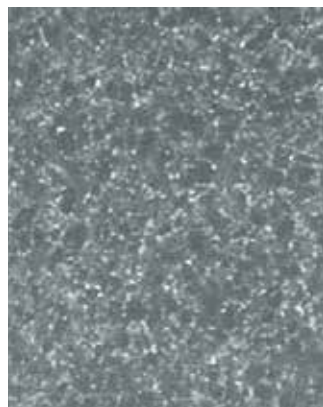
PCD  
REAMERS

# G

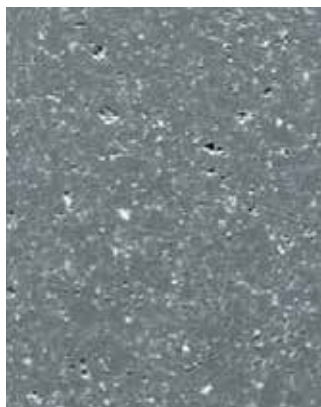
DIAMOND  
DRESSERS

H

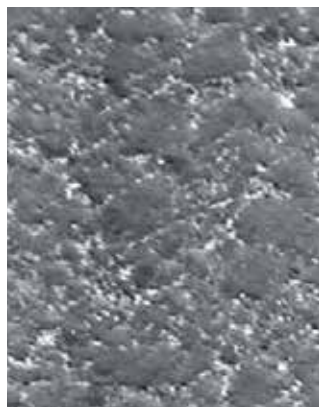
DIAMOND  
CUSTOM-MADE  
TOOLS



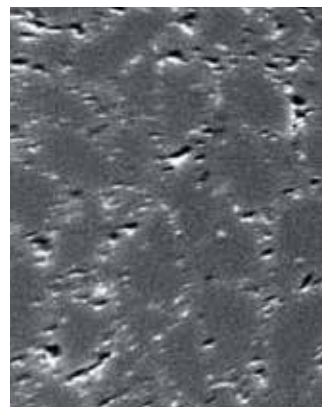
- Ideal for milling and rough cutting of aluminum alloys
- Also suitable for machining titanium and composites.



- Ideal for both roughing and finishing operations using a single tool
- Highly recommended for low to medium-content aluminum alloys



- Successful in machining high-silicon aluminum alloys
- Suitable for metal matrix composites (MMC), tungsten carbides, and ceramics



- Application areas: MMC, high silicon aluminum alloys, high-strength cast irons, and bi-metal applications.

Abrasion is characterized by the formation of grooves and ridges on the tool flank in the direction of sliding. The abrasion resistance of PCD was assessed on a high-silicon aluminum alloy.

## Common Applications

- Aluminum alloys
- Silicon-aluminum alloys
- Brass and bronze alloys
- Copper alloys
- Zinc alloys
- Magnesium alloys
- Presintered tungsten carbide
- Sintered tungsten carbide
- Epoxy resins
- Fiberglass composites
- Carbon-phenolic
- Hard rubber
- Plastics
- Ceramics (unfired)
- Graphite

PCD inserts find application in various industries, including aviation, the automotive sector, energy equipment, woodworking, and stone industries. They are capable of cutting and processing different materials, such as non-ferrous metals, tungsten carbide, ceramics, non-metals, and composites.

Although PCD tools are well-suited for high-speed cutting of non-ferrous metals and alloys, they are not suitable for cutting ferrous metals. Ferrous metals often contain carbides that react with the carbide base of PCD tools, leading to increased wear and corrosion. For high-speed and precise cutting of ferrous metals, polycrystalline cubic boron nitride (PCBN) is a better choice.

Feel free to contact us to discuss your specific needs.

**A**  
PCD  
INSERTS

**B**  
CBN  
INSERTS

**C**  
SOLID CBN  
INSERTS

**D**  
PCD  
MILLING  
CUTTERS

**E**  
PCD  
DRILLING  
TOOLS

**F**  
PCD  
REAMERS

**G**  
DIAMOND  
DRESSERS

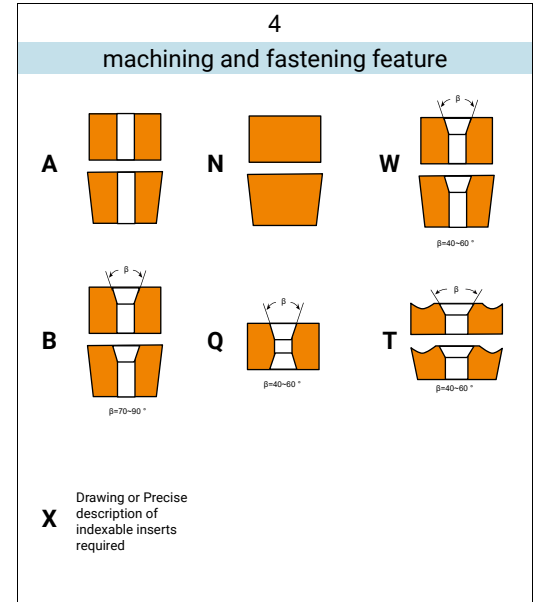
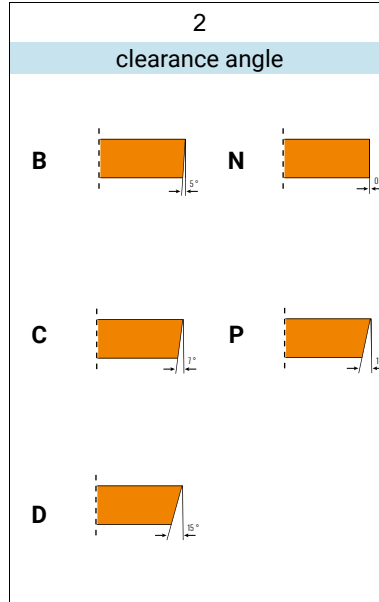
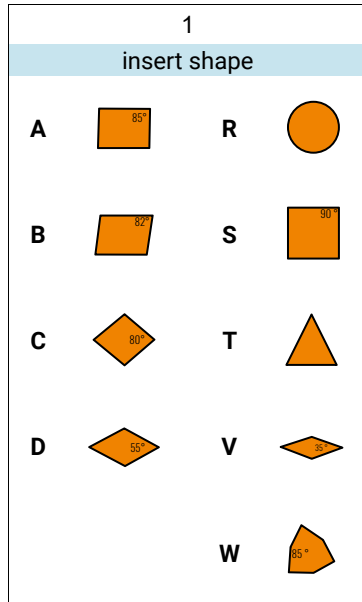
**H**  
DIAMOND  
CUSTOM-MADE  
TOOLS



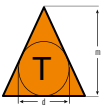
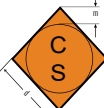
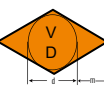

A  
PCD  
INSERTS

ISO

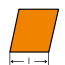

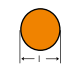




C	C	G	W	12	04	08	-	TP	N
1	2	3	4	5	6	7		8	9

B  
CBN  
INSERTSC  
SOLID CBN  
INSERTSD  
PCD  
MILLING  
CUTTERSE  
PCD  
DRILLING  
TOOLSF  
PCD  
REAMERSG  
DIAMOND  
DRESSERSH  
DIAMOND  
CUSTOM-MADE  
TOOLS

**3**  
tolerances, ISO[mm]

	d	m	s
	<b>A</b> ±0.025	±0.005	±0.025
<b>C</b>	±0.025	±0.013	±0.025
<b>E</b>	±0.025	±0.025	±0.025
	<b>F</b> ±0.013	±0.005	±0.025
<b>G</b>	±0.025	±0.025	±0.130
<b>H</b>	±0.013	±0.013	±0.025
	<b>J</b> ±0.05~±0.15	±0.005	±0.025
<b>K</b>	±0.05~±0.15	±0.013	±0.025
<b>L</b>	±0.05~±0.15	±0.025	±0.025
	<b>M</b> ±0.05~±0.15	±0.08~±0.20	±0.130

**5**  
insert size




	C	D	R	S	T	V	W
Inner circle diameter							
IC mm	Code	Code	Code	Code	Code	Code	Code
3.97	1.2	5/32"					
5							
5.56	1.8						
6		06					
6.35	2	1/4"	06		11	11	04
8	08		08				05
9.525	3	3/8"	09	11	09	16	06
10			10				
12			12				
12.7	4	1/2"	12	15	12	22	08
15.875	5	5/8"	16		15	27	10
16			16				12
19.05	6	3/4"	19		19	33	
20			20				
25							
25.4	8	1"		25			
31.75	10	1-1/4"					

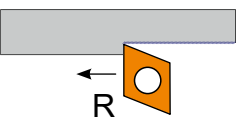
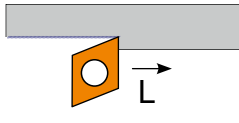
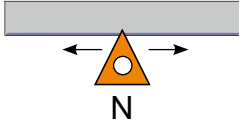
ANSI

C	C	G	W	4	3	2	-	TP	N
1	2	3	4	5	6	7		8	9

6 thickness			
ISO		ANSI	
01	1.59	1	1/16
T1	1.98	1.2	0.75
02	2.38	1.5	3/32
T2	2.78	-	-
03	3.18	2	1/8
T3	3.97	2.5	5/32
04	4.76	3	3/16
05	5.56	3.5	7/32
06	6.36	4	1/4
07	7.94	5	5/16
09	9.52	6	3/8

7 corner radius r mm, inch			
ISO		ANSI	
01	r=0.1	0.1	1/25
02	r=0.2	0	2/25
04	r=0.4	1	1/64
08	r=0.8	2	1/32
12	r=1.2	3	3/64
16	r=1.6	4	1/16
24	r=2.4	6	3/32
32	r=3.2	8	1/8
0	For diameters converted from imperial units to mm		
M0	For diameters in metric units		

8 insert form	
	<b>TP</b> pcd inserts with one corner
	<b>TPB</b> pcd inserts with chip breaker
	<b>FE</b> full edge pcd inserts

9 cutting direction	
	<b>R</b>
	<b>L</b>
	<b>N</b>

**A**  
PCD  
INSERTS

**B**  
CBN  
INSERTS

**C**  
SOLID CBN  
INSERTS

**D**  
PCD  
MILLING  
CUTTERS

**E**  
PCD  
DRILLING  
TOOLS

**F**  
PCD  
REAMERS

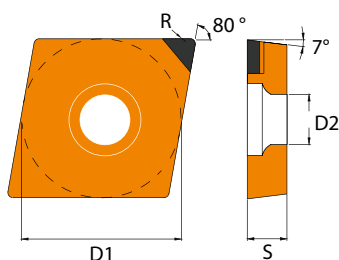
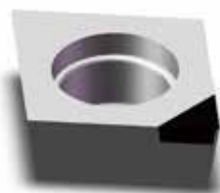
**G**  
DIAMOND  
DRESSERS

**H**  
DIAMOND  
CUSTOM-MADE  
TOOLS



A  
PCD  
INSERTS

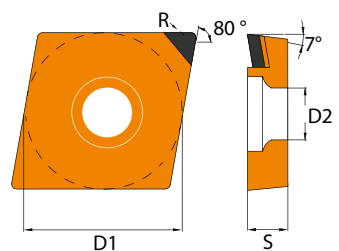
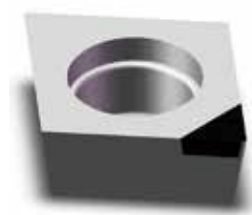
## CCGW/CCMW

B  
CBN  
INSERTSC  
SOLID CBN  
INSERTSD  
PCD  
MILLING  
CUTTERS

Designation	D1 [MM]	D2 [MM]	S [MM]	R
CCGW060204-TP	6.35	2.8	2.38	0.4
CCGW060208-TP				0.8
CCMW060202-TP	6.35	2.8	2.38	0.2
CCMW060204-TP				0.4
CCMW060208-TP				0.8
CCGW09T302-TP	9.525	4.4	3.97	0.2
CCGW09T304-TP				0.4
CCGW09T308-TP				0.8

Designation	D1 [MM]	D2 [MM]	S [MM]	R
CCMW09T304-TP	9.525	4.4	3.97	0.4
CCMW09T308-TP				0.8
CCGW120404-TP	12.7	5.5	4.76	0.4
CCGW120408-TP				0.8
CCGW120412-TP				1.2
CCMW120404-TP	12.7	5.5	4.76	0.4
CCMW120408-TP				0.8
CCMW120412-TP				1.2

## CCGT/CCMT

E  
PCD  
DRILLING  
TOOLSF  
PCD  
REAMERSG  
DIAMOND  
DRESSERS

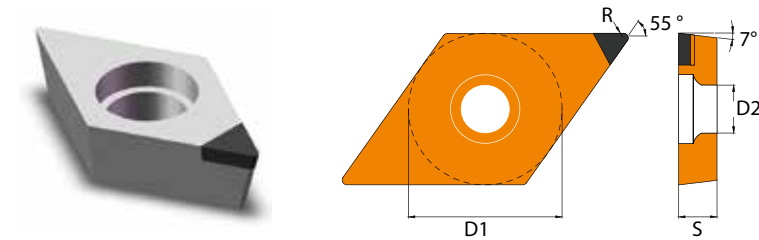
Designation	D1 [MM]	D2 [MM]	S [MM]	R
CCGT060204-TP	6.35	2.8	2.38	0.4
CCGT060208-TP				0.8
CCMT060202-TP	6.35	2.8	2.38	0.2
CCMT060204-TP				0.4
CCMT060208-TP				0.8
CCGT09T302-TP	9.525	4.4	3.97	0.2
CCGT09T304-TP				0.4
CCGT09T308-TP				0.8

Designation	D1 [MM]	D2 [MM]	S [MM]	R
CCMT09T304-TP	9.525	4.4	3.97	0.4
CCMT09T308-TP				0.8
CCGT120404-TP	12.7	5.5	4.76	0.4
CCGT120408-TP				0.8
CCGT120412-TP				1.2
CCMT120404-TP	12.7	5.5	4.76	0.4
CCMT120408-TP				0.8
CCMTW120412-TP				1.2

## Order Note

- Please refer to A 05/06 for PCD inserts code key description.
- To place an order, please refer to the designation code.
- For the item which is not on the list pls contact our sales to get the quote.

## DCGW/DCMW



Designation	D1 [MM]	D2 [MM]	S [MM]	R
DCGW070202-TP	6.35	2.8	2.38	0.2
DCGW070204-TP				0.4
DCGW070208-TP				0.8
DCMW070202-TP	6.35	2.8	2.38	0.2
DCMW070204-TP				0.4
DCMW070208-TP				0.8

Designation	D1 [MM]	D2 [MM]	S [MM]	R
DCGW11T304-TP	9.525	4.4	3.97	0.4
DCGW11T308-TP				0.8
DCGW11T312-TP				1.2
DCMW11T304-TP	9.525	4.4	3.97	0.4
DCMW11T308-TP				0.8
DCMW11T312-TP				1.2

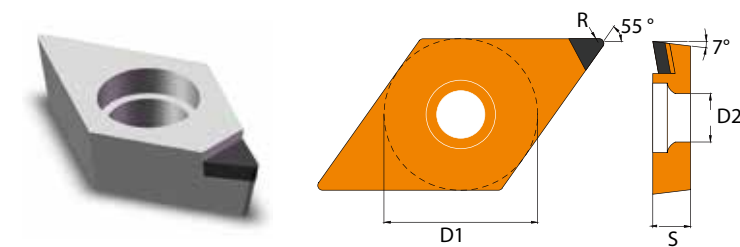
**A**  
PCD  
INSERTS

**B**  
CBN  
INSERTS

**C**  
SOLID CBN  
INSERTS

**D**  
PCD  
MILLING  
CUTTERS

## DCGT/DCMT



Designation	D1 [MM]	D2 [MM]	S [MM]	R
DCGT070202-TP	6.35	2.8	2.38	0.2
DCGT070204-TP				0.4
DCGT070208-TP				0.8
DCMT070202-TP	6.35	2.8	2.38	0.2
DCMT070204-TP				0.4
DCMT070208-TP				0.8

Designation	D1 [MM]	D2 [MM]	S [MM]	R
DCGT11T304-TP	9.525	4.4	3.97	0.4
DCGT11T308-TP				0.8
DCGT11T312-TP				1.2
DCMT11T304-TP	9.525	4.4	3.97	0.4
DCMT11T308-TP				0.8
DCMT11T312-TP				1.2

**E**  
PCD  
DRILLING  
TOOLS

**F**  
PCD  
REAMERS

**G**  
DIAMOND  
DRESSERS

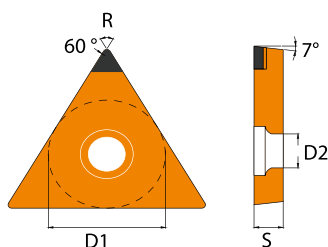
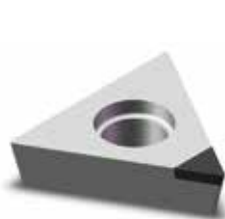
**H**  
DIAMOND  
CUSTOM-MADE  
TOOLS

### Order Note

- Please refer to A 05/06 for PCD inserts code key description.
- To place an order, please refer to the designation code.
- For the item which is not on the list pls contact our sales to get the quote.

A  
PCD  
INSERTS

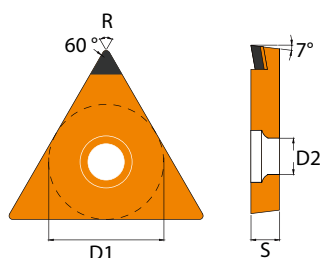
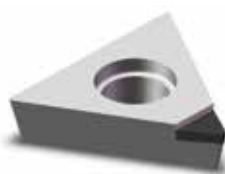
## TCGW/TCMW

B  
CBN  
INSERTSC  
SOLID CBN  
INSERTSD  
PCD  
MILLING  
CUTTERS

Designation	D1 [MM]	D2 [MM]	S [MM]	R
TCGW090204-TP	5.56	2.5	2.38	0.4
TCGW090208-TP				0.8
TCMW090204-TP	5.56	2.5	2.38	0.4
TCMW090208-TP				0.8
TCGW110204-TP	6.35	2.8	2.38	0.4
TCGW110208-TP				0.8

Designation	D1 [MM]	D2 [MM]	S [MM]	R
TCMW110204-TP	6.35	2.8	2.38	0.4
TCMW110208-TP				0.8
TCGW16T304-TP	9.525	4.4	3.97	0.4
TCGW16T308-TP				0.8
TCMW16T304-TP	9.525	4.4	3.97	0.4
TCMW16T308-TP				0.8

## TCGT/TCMT

E  
PCD  
DRILLING  
TOOLSF  
PCD  
REAMERSG  
DIAMOND  
DRESSERS

Designation	D1 [MM]	D2 [MM]	S [MM]	R
TCGT090204-TP	5.56	2.5	2.38	0.4
TCGT090208-TP				0.8
TCMT090204-TP	5.56	2.5	2.38	0.4
TCMT090208-TP				0.8
TCGT110204-TP	6.35	2.8	2.38	0.4
TCGT110208-TP				0.8

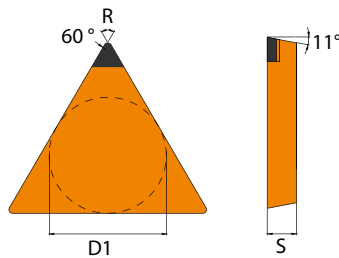
Designation	D1 [MM]	D2 [MM]	S [MM]	R
TCMT110204-TP	6.35	2.8	2.38	0.4
TCMT110208-TP				0.8
TCGT16T304-TP	9.525	4.4	3.97	0.4
TCGT16T308-TP				0.8
TCMT16T304-TP	9.525	4.4	3.97	0.4
TCMT16T308-TP				0.8

H  
DIAMOND  
CUSTOM-MADE  
TOOLS

## Order Note

- Please refer to A 05/06 for PCD inserts code key description.
- To place an order, please refer to the designation code.
- For the item which is not on the list pls contact our sales to get the quote.

## TPGN/TPMN



**A**  
PCD  
INSERTS

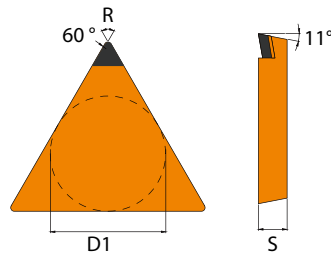
**B**  
CBN  
INSERTS

**C**  
SOLID CBN  
INSERTS

**D**  
PCD  
MILLING  
CUTTERS

Designation	D1 [MM]	D2 [MM]	S [MM]	R
TPGN110302-TP	6.35	-	3.18	0.2
TPGN110304-TP				0.4
TPGN110308-TP				0.8
TPMN110302-TP	6.35	-	3.18	0.2
TPMN110304-TP				0.4
TPMN110308-TP				0.8

## TPGX/TPMX



**E**  
PCD  
DRILLING  
TOOLS

**F**  
PCD  
REAMERS

Designation	D1 [MM]	D2 [MM]	S [MM]	R
TPGX110302-TP	6.35	-	3.18	0.2
TPGX110304-TP				0.4
TPGX110308-TP				0.8
TPMX110302-TP	6.35	-	3.18	0.2
TPMX110304-TP				0.4
TPMX110308-TP				0.8

**G**  
DIAMOND  
DRESSERS

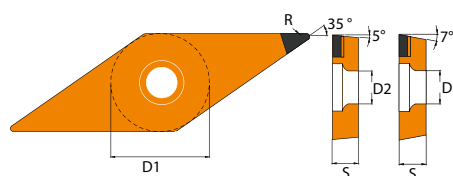
**H**  
DIAMOND  
CUSTOM-MADE  
TOOLS

### Order Note

- Please refer to A 05/06 for PCD inserts code key description.
- To place an order, please refer to the designation code.
- For the item which is not on the list pls contact our sales to get the quote.

A  
PCD  
INSERTSB  
CBN  
INSERTS

## VBGW/VCGW

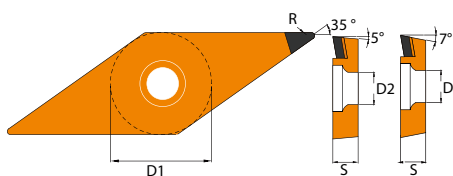


Designation	D1 [MM]	D2 [MM]	S [MM]	R
VBGW110302-TP	6.35	2.9	3.18	0.2
VBGW110304-TP				0.4
VBGW110308-TP				0.8
VBGW160404-TP	9.525	4.4	4.76	0.4
VBGW160408-TP				0.8
VBGW160412-TP				1.2

Designation	D1 [MM]	D2 [MM]	S [MM]	R
VCGW110302-TP	6.35	2.9	3.18	0.2
VCGW110304-TP				0.4
VCGW110308-TP				0.8
VCGW160404-TP	9.525	4.4	4.76	0.4
VCGW160408-TP				0.8
VCGW160412-TP				1.2

D  
PCD  
MILLING  
CUTTERS

## VBGT/VCGT

E  
PCD  
DRILLING  
TOOLS

Designation	D1 [MM]	D2 [MM]	S [MM]	R
VBGT110302-TP	6.35	2.9	3.18	0.2
VBGT110304-TP				0.4
VBGT110308-TP				0.8
VBGT160404-TP	9.525	4.4	4.76	0.4
VBGT160408-TP				0.8
VBGT160412-TP				1.2

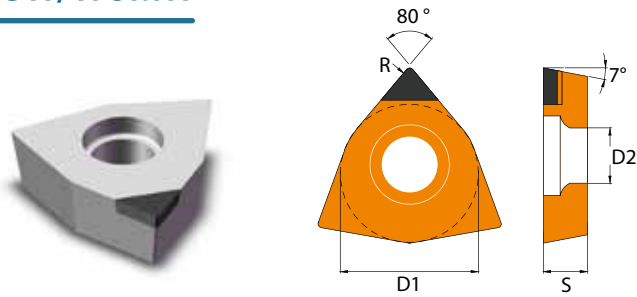
Designation	D1 [MM]	D2 [MM]	S [MM]	R
VCGT110302-TP	6.35	2.9	3.18	0.2
VCGT110304-TP				0.4
VCGT110308-TP				0.8
VCGT160404-TP	9.525	4.4	4.76	0.4
VCGT160408-TP				0.8
VCGT160412-TP				1.2

F  
PCD  
REAMERSG  
DIAMOND  
DRESSERSH  
DIAMOND  
CUSTOM-MADE  
TOOLS

## Order Note

- Please refer to A 05/06 for PCD inserts code key description.
- To place an order, please refer to the designation code.
- For the item which is not on the list pls contact our sales to get the quote.

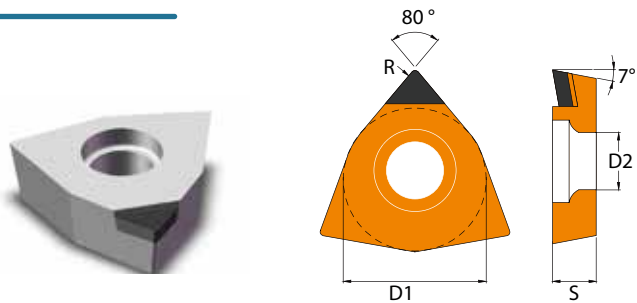
## WCGW/WCMW



Designation	D1 [MM]	D2 [MM]	S [MM]	R
WCGW040202-TP	6.35	2.8	2.38	0.2
WCGW040204-TP				0.4
WCGW040208-TP				0.8
WCMW040202-TP	6.35	2.8	2.38	0.2
WCMW040204-TP				0.4
WCMW040208-TP				0.8

Designation	D1 [MM]	D2 [MM]	S [MM]	R
WCGW06T302-TP	9.525	4.4	3.97	0.2
WCGW06T304-TP				0.4
WCGW06T308-TP				0.8
WCMW06T302-TP	9.525	4.4	3.97	0.2
WCMW06T304-TP				0.4
WCMW06T308-TP				0.8

## WCGT/WCMT



Designation	D1 [MM]	D2 [MM]	S [MM]	R
WCGT040202-TP	6.35	2.8	2.38	0.2
WCGT040204-TP				0.4
WCGT040208-TP				0.8
WCMT040202-TP	6.35	2.8	2.38	0.2
WCMT040204-TP				0.4
WCMT040208-TP				0.8

Designation	D1 [MM]	D2 [MM]	S [MM]	R
WCGT06T302-TP	9.525	4.4	3.97	0.2
WCGT06T304-TP				0.4
WCGT06T308-TP				0.8
WCMT06T302-TP	9.525	4.4	3.97	0.2
WCMT06T304-TP				0.4
WCMT06T308-TP				0.8

### Order Note

- Please refer to A 05/06 for PCD inserts code key description.
- To place an order, please refer to the designation code.
- For the item which is not on the list pls contact our sales to get the quote.

**A**  
PCD  
INSERTS

**B**  
CBN  
INSERTS

**C**  
SOLID CBN  
INSERTS

**D**  
PCD  
MILLING  
CUTTERS

**E**  
PCD  
DRILLING  
TOOLS

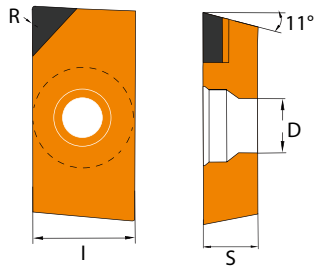
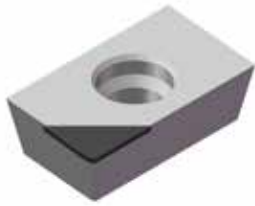
**F**  
PCD  
REAMERS

**G**  
DIAMOND  
DRESSERS

**H**  
DIAMOND  
CUSTOM-MADE  
TOOLS

A  
PCD  
INSERTS

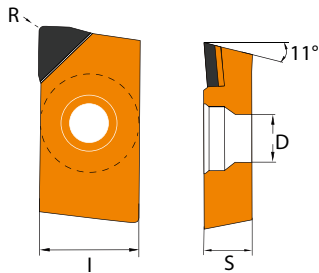
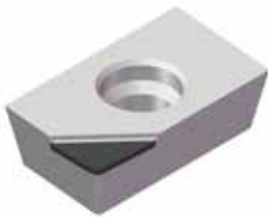
## APKW



Designation	L [MM]	D [MM]	S [MM]	R
APKW110302-TP	6.35	2.8	3.18	0.2
APKW110304-TP				0.4
APKW110308-TP				0.8
APKW160302-TP	9.525	4.4	3.18	0.2
APKW160304-TP				0.4
APKW160308-TP				0.8

D  
PCD  
MILLING  
CUTTERS

## APKT



Designation	L [MM]	D [MM]	S [MM]	R
APKT110302-TP	6.35	2.8	3.18	0.2
APKT110304-TP				0.4
APKT110308-TP				0.8
APKT160302-TP	9.525	4.4	3.18	0.2
APKT160304-TP				0.4
APKT160308-TP				0.8

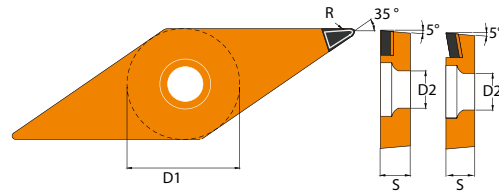
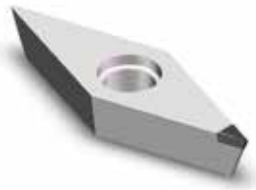
F  
PCD  
REAMERSG  
DIAMOND  
DRESSERSH  
DIAMOND  
CUSTOM-MADE  
TOOLS

## Order Note

- Please refer to A 05/06 for PCD inserts code key description.
- To place an order, please refer to the designation code.
- For the item which is not on the list pls contact our sales to get the quote.



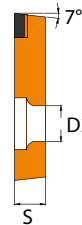
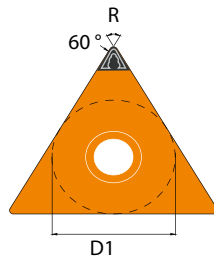
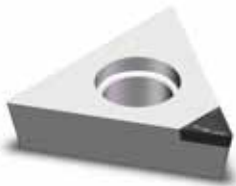
## VBGW(T)/VBMW(T)



Designation	D1 [MM]	D2 [MM]	S [MM]	R
VBGW160404-TPB	9.525	4.4	4.76	0.4
VBGW160408-TPB				0.8
VBGW160412-TPB				1.2
VBMW160404-TPB	9.525	4.4	4.76	0.4
VBMW160408-TPB				0.8
VBMW160412-TPB				1.2

Designation	D1 [MM]	D2 [MM]	S [MM]	R
VBGT160404-TPB	9.525	4.4	4.76	0.4
VBGT160408-TPB				0.8
VBGT160412-TPB				1.2
VBMT160404-TPB	9.525	4.4	4.76	0.4
VBMT160408-TPB				0.8
VBMT160412-TPB				1.2

## TCGW/TCMW



Designation	D1 [MM]	D2 [MM]	S [MM]	R
TCGW090204-TPB	5.56	2.5	2.38	0.4
TCGW090208-TPB				0.8
TCMW090204-TPB	5.56	2.5	2.38	0.4
TCMW090208-TPB				0.8
TCGW110204-TPB	6.35	2.8	2.38	0.4
TCGW110208-TPB				0.8

Designation	D1 [MM]	D2 [MM]	S [MM]	R
TCMW110204-TPB	6.35	2.8	2.38	0.4
TCMW110208-TPB				0.8
TCGW16T304-TPB	9.525	4.4	3.97	0.4
TCGW16T308-TPB				0.8
TCMW16T304-TPB	9.525	4.4	3.97	0.4
TCMW16T308-TPB				0.8

### Order Note

- Please refer to A 05/06 for PCD inserts code key description.
- To place an order, please refer to the designation code.
- For the item which is not on the list pls contact our sales to get the quote.

**A**  
PCD  
INSERTS

**B**  
CBN  
INSERTS

**C**  
SOLID CBN  
INSERTS

**D**  
PCD  
MILLING  
CUTTERS

**E**  
PCD  
DRILLING  
TOOLS

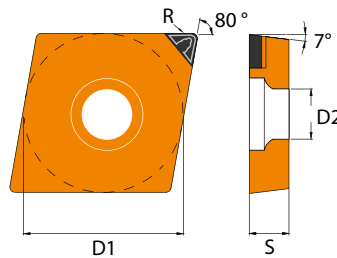
**F**  
PCD  
REAMERS

**G**  
DIAMOND  
DRESSERS

**H**  
DIAMOND  
CUSTOM-MADE  
TOOLS

A  
PCD  
INSERTS

## CCGW/CCMW

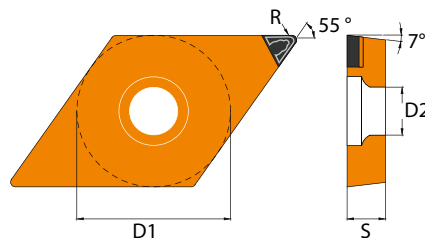


Designation	D1 [MM]	D2 [MM]	S [MM]	R
CCGW060204-TPB	6.35	2.8	2.38	0.4
CCGW060208-TPB				0.8
CCMW060202-TPB	6.35	2.8	2.38	0.2
CCMW060204-TPB				0.4
CCMW060208-TPB				0.8
CCGW09T302-TPB	9.525	4.4	3.97	0.2
CCGW09T304-TPB				0.4
CCGW09T308-TPB				0.8

Designation	D1 [MM]	D2 [MM]	S [MM]	R
CCMW09T304-TPB	9.525	4.4	3.97	0.4
CCMW09T308-TPB				0.8
CCGW120404-TPB	12.7	5.5	4.76	0.4
CCGW120408-TPB				0.8
CCGW120412-TPB				1.2
CCMW120404-TPB	12.7	5.5	4.76	0.4
CCMW120408-TPB				0.8
CCMW120412-TPB				1.2

E  
PCD  
DRILLING  
TOOLS

## DCGW/DCMW



Designation	D1 [MM]	D2 [MM]	S [MM]	R
DCGW070202-TPB	6.35	2.8	2.38	0.2
DCGW070204-TPB				0.4
DCGW070208-TPB				0.8
DCMW070202-TPB	6.35	2.8	2.38	0.2
DCMW070204-TPB				0.4
DCMW070208-TPB				0.8

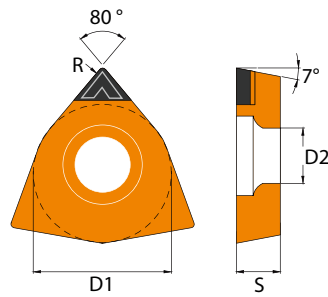
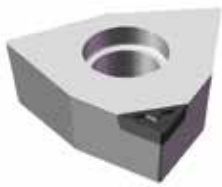
Designation	D1 [MM]	D2 [MM]	S [MM]	R
DCGW11T304-TPB	9.525	4.4	3.97	0.4
DCGW11T308-TPB				0.8
DCGW11T312-TPB				1.2
DCMW11T304-TPB	9.525	4.4	3.97	0.4
DCMW11T308-TPB				0.8
DCMW11T312-TPB				1.2

F  
PCD  
REAMERSG  
DIAMOND  
DRESSERSH  
DIAMOND  
CUSTOM-MADE  
TOOLS

## Order Note

- Please refer to A 05/06 for PCD inserts code key description.
- To place an order, please refer to the designation code.
- For the item which is not on the list pls contact our sales to get the quote.

## WCGW/WCMW



Designation	D1 [MM]	D2 [MM]	S [MM]	R
WCGW040202-TPB	6.35	2.8	2.38	0.2
WCGW040204-TPB				0.4
WCGW040208-TPB				0.8
WCMW040202-TPB	6.35	2.8	2.38	0.2
WCMW040204-TPB				0.4
WCMW040208-TPB				0.8

Designation	D1 [MM]	D2 [MM]	S [MM]	R
WCGW06T302-TPB	9.525	4.4	3.97	0.2
WCGW06T304-TPB				0.4
WCGW06T308-TPB				0.8
WCMW06T302-TPB	9.525	4.4	3.97	0.2
WCMW06T304-TPB				0.4
WCMW06T308-TPB				0.8

**A**  
PCD  
INSERTS

**B**  
CBN  
INSERTS

**C**  
SOLID CBN  
INSERTS

**D**  
PCD  
MILLING  
CUTTERS

**E**  
PCD  
DRILLING  
TOOLS

**F**  
PCD  
REAMERS

**G**  
DIAMOND  
DRESSERS

**H**  
DIAMOND  
CUSTOM-MADE  
TOOLS

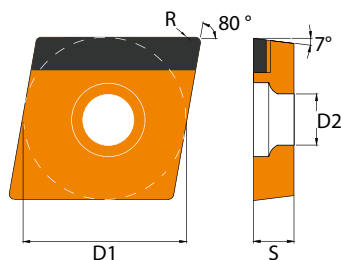
### Order Note

- Please refer to A 05/06 for PCD inserts code key description.
- To place an order, please refer to the designation code.
- For the item which is not on the list pls contact our sales to get the quote.

## A

PCD  
INSERTS

## CCGW-FULL EDGE



## B

CBN  
INSERTS

## C

SOLID CBN  
INSERTS

## D

PCD  
MILLING  
CUTTERS

## E

PCD  
DRILLING  
TOOLS

## F

PCD  
REAMERS

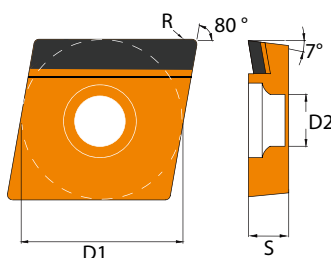
## G

DIAMOND  
DRESSERS

## H

DIAMOND  
CUSTOM-MADE  
TOOLS

## CCGT-FULL EDGE

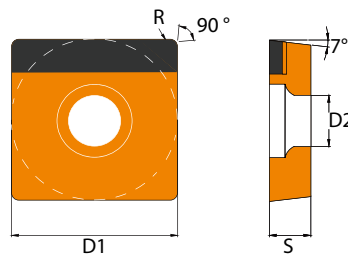


Designation	D1 [MM]	D2 [MM]	S [MM]	R
CCGT060204-FE	6.35	2.8	2.38	0.4
CCGT060208-FE				0.8
CCGT09T308-FE	9.525	4.4	3.97	0.8
CCGT09T312-FE				1.2
CCGT120412-FE	12.7	5.5	4.76	1.2

## Order Note

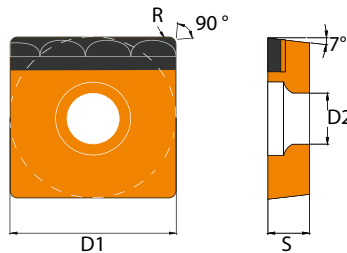
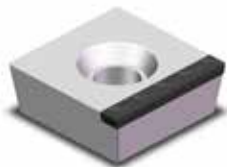
- Please refer to A 05/06 for PCD inserts code key description.
- To place an order, please refer to the designation code.
- For the item which is not on the list pls contact our sales to get the quote.

## SCGW-FULL EDGE



Designation	D1 [MM]	D2 [MM]	S [MM]	R
SCGW09T304-FE	9.525	4.4	3.97	0.4
SCGW09T308-FE				0.8
SCGW120404-FE	12.7	5.16	4.76	0.4
SCGW120408-FE				0.8
SCGW120412-FE				1.2

## SCGW- Chip breaker



Designation	D1 [MM]	D2 [MM]	S [MM]	R
SCGW09T304-FEB	9.525	4.4	3.97	0.4
SCGW09T308-FEB				0.8
SCGW120404-FEB	12.7	5.16	4.76	0.4
SCGW120408-FEB				0.8
SCGW120412-FEB				1.2

### Order Note

- Please refer to A 05/06 for PCD inserts code key description.
- To place an order, please refer to the designation code.
- For the item which is not on the list pls contact our sales to get the quote.

**A**  
PCD  
INSERTS

**B**  
CBN  
INSERTS

**C**  
SOLID CBN  
INSERTS

**D**  
PCD  
MILLING  
CUTTERS

**E**  
PCD  
DRILLING  
TOOLS

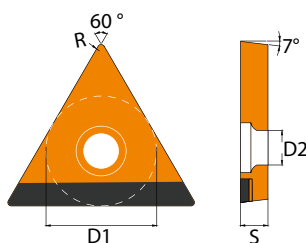
**F**  
PCD  
REAMERS

**G**  
DIAMOND  
DRESSERS

**H**  
DIAMOND  
CUSTOM-MADE  
TOOLS

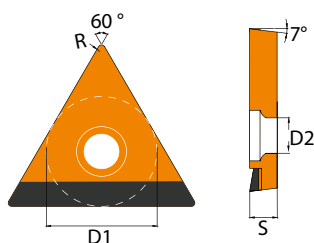
A  
PCD  
INSERTS

## TCGW-FULL EDGE



Designation	D1 [MM]	D2 [MM]	S [MM]	R
TCGW090202-FE	5.56	2.5	2.38	0.2
TCGW110204-FE	6.35	2.8	2.38	0.4
TCGW110208-FE				0.8
TCGW16T304-FE	9.525	4.4	3.97	0.4
TCGW16T308-FE				0.8

## TCGT-FULL EDGE



Designation	D1 [MM]	D2 [MM]	S [MM]	R
TCGT090202-FE	5.56	2.5	2.38	0.2
TCGT110204-FE	6.35	2.8	2.38	0.4
TCGT110208-FE				0.8
TCGT16T304-FE	9.525	4.4	3.97	0.4
TCGT16T308-FE				0.8

## Order Note

- Please refer to A 05/06 for PCD inserts code key description.
- To place an order, please refer to the designation code.
- For the item which is not on the list pls contact our sales to get the quote.



## 1. PCD Tip Custom-made Milling(router) Bit

- The tipped PCD blade is sourced from E6, offering stable performance and long service life.
- Sharp cutting edge, enabling high-speed cutting for non-ferrous metals and non-metallic materials.
- No stick to the cutting tools during processing.

Process	Router, Milling
Working Material	Aluminum, CFPR, Graphite
Tolerance	0.01~0.005MM



## 2. PCD Full Edge For Turning(Milling) Graphite

- The PCD inserts are utilized for milling graphite and other challenging machining materials.
- The PCD blade is fully tipped, maximizing processing efficiency and tooling life.
- High wear resistance, and good thermal conductivity.

Process	Turning, Face Milling
Working Material	Aluminum, Graphite
Tolerance	0.025~0.015MM



## 3. PCD Custom-made Face Milling Bits

- With high precision, the dimension differences between inserts are less than 0.025mm.
- High wear resistance, good thermal conductivity, and longer working life.
- Excellent performance for high-speed cutting the hardened mate.

Process	Face Milling
Working Material	Silicon, Aluminum, Alloy
Tolerance	0.025~0.015MM

**A**  
PCD  
INSERTS

**B**  
CBN  
INSERTS

**C**  
SOLID CBN  
INSERTS

**D**  
PCD  
MILLING  
CUTTERS

**E**  
PCD  
DRILLING  
TOOLS

**F**  
PCD  
REAMERS

**G**  
DIAMOND  
DRESSERS

**H**  
DIAMOND  
CUSTOM-MADE  
TOOLS