



iMOW
by **EP EQUIPMENT**

QDD10/15T LI-ION TECHNOLOGY

Electric Tractor 1.0/1.5T

- It is equipped with lithium batteries, which is convenient to charge and easy to replace;
- It is lighter, narrower and smaller, which makes it suitable for different working conditions;
- Four-way control of the operation handle makes operation more comfortable.

EP EQUIPMENT CO.,LTD
www.ep-equipment.com



FEATURE

New design

It is equipped with lithium batteries, which is convenient to charge and easy to replace.
It uses high torque electromagnetic brake, which is safe and effective.



More convenient

It is lighter, narrower and smaller, which makes it suitable for different working conditions.
It can meet the needs of users with its small and exquisite appearance and high cost-effectiveness.
It is flexible and convenient to operate and its battery life is longer.



Convenient and comfortable operation

Four-way control of the operation handle makes operation more comfortable.
The backrest can be adjusted up and down, which is suitable for drivers of different shapes.
It is easy to get on and off, load and unload materials when standing.
It is convenient to use with the handle of a pallet truck that has infinitely variable speed.

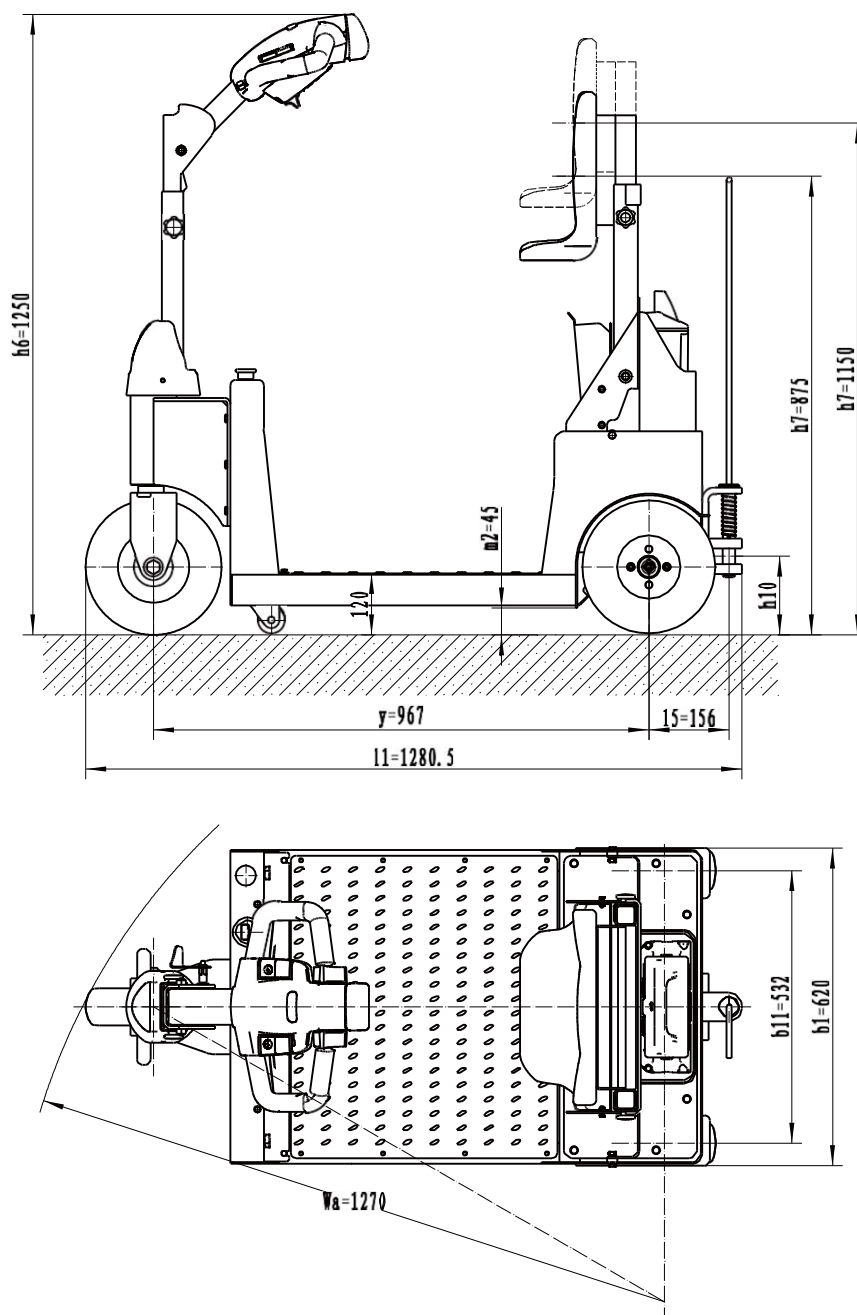


Electric Tractor 1.0/1.5T

QDD10/15T

1.1	Manufacturer			EP	EP
1.2	Model designation			QDD10T	QDD15T
1.3	Drive			Electric	Electric
1.4	Operator type			Standing	Standing
1.5	Load capacity	Q	kg	1000	1500
1.9	Wheelbase	y	mm	967	967
2.1	Service weight		kg	125	150
2.2	Axle loading, laden front/rear		kg	—	—
2.3	Axle loading, unladen front/rear		kg	75/50	90/60
3.1	Tyre type			Solid rubber	Solid rubber
3.2	Tyre size, front		mm	Φ250x65	Φ250x65
3.3	Tyre size, rear		mm	Φ255x80	Φ255x80
3.4	Additional wheels (castor wheels)		mm	—	—
3.5	Wheels, number front/rear (x=drive wheels)		mm	1/2x	1/2x
3.6	Tread width, front	b10	mm	—	—
3.7	Tread width, rear	b11	mm	532	532
4.2.1	Overall height	h15	mm	1230	1230
4.8	Seat height/standing height	h7	mm	120	120
4.9	Height of tiller handle in drive position min./max.	h14	mm	1210~1340	1210~1340
4.12	Tow coupling height	h10	mm	123/146/169	123/146/169
4.19	Overall length	l1	mm	1280	1280
4.21	Overall width	b1/b2	mm	620	620
4.32	Ground clearance, center of wheelbase	m2	mm	45	45
5.1	Travel speed, laden/unladen		km/ h	4.5/5	4.5/5
5.5	Drawbar pull, laden/unladen		N	200	300
5.6	Max. drawbar pull, laden/unladen		N	312	466
5.8	Max. gradeability, laden/unladen		%	3/16	3/16
5.10	Service brake			Electromagnetic	Electromagnetic
6.1	Drive motor rating S2 60 min		kW	0.8	0.8
6.4	Battery voltage/nominal capacity		V/Ah	24/20	24/20
6.5	Battery weight		kg	10	10
8.1	Type of drive control			DC	DC
10.5	Steering design			Mechanical	Mechanical
10.7	Sound pressure level at the driver's ear		dB(A)	70	70
10.8	Towing coupling, type DIN 15170			—	—

If there are improvements of technical parameters or configurations, no further notice will be given.
The diagram shown may contain non-standard configurations.



Option

Options	QDD10/15T
Driving wheel	•
Battery capacity	○
Lateral change battery	—
Front light	○
Warning light	○
Steering light	—
Cockpit	—
Side to pull the car	—
Note: • standard ○ option — NA	