



Routing Global Inventory...

# VMC CATALOGUE

# Doosan MYNX 750 – 3 AXIS

## Machine type

- 3 Axis VMC

## Make

- Doosan, S Korea

## Model

- Mynx 750

## Year of Make

- 2003

## Control

- Fanuc i Series

## Location

- UNIT 3

## X Axis

- 1,525 mm

## Y Axis

- 770 mm

## Z Axis

- 625 mm

## TABLE

- 1700 x 750 mm

## ATC

- 24 Tool

## Spindle Taper / RPM

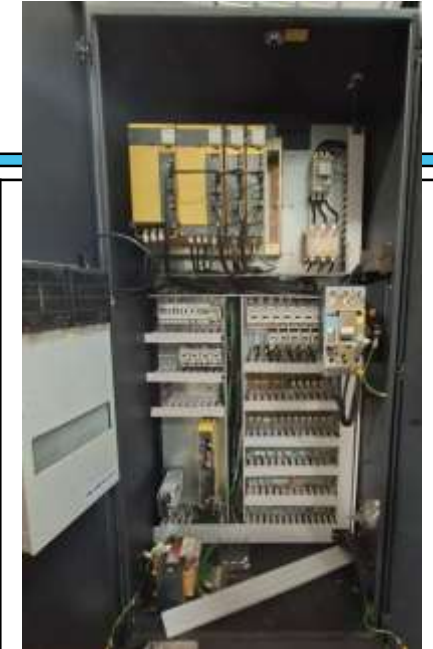
- BT40 / 8000RPM

## Rapid Traverse

- 24 m/min

## SCALE FEEDBACK

- YES



If interested please contact @



7411531468 | 9538289333  
9980022929 | 9980532197



cncart@gmail.com






# Doosan DVMC BM 2740P – 3 AXIS – For SALE

<b>Machine type</b> <ul style="list-style-type: none"> <li>• 3 Axis Double Column VMC</li> </ul>	<b>X Axis</b>	<ul style="list-style-type: none"> <li>• 4000 mm</li> </ul>
<b>Make</b> <ul style="list-style-type: none"> <li>• Doosan, S Korea</li> </ul>	<b>Y Axis</b>	<ul style="list-style-type: none"> <li>• 2700 mm</li> </ul>
<b>Model</b> <ul style="list-style-type: none"> <li>• BM 2740P</li> </ul>	<b>Z Axis</b>	<ul style="list-style-type: none"> <li>• 800 mm</li> </ul>
<b>Year of Make</b> <ul style="list-style-type: none"> <li>• 2013</li> </ul>	<b>TABLE</b>	<ul style="list-style-type: none"> <li>• 4000 x 2500 mm</li> </ul>
<b>Control</b> <ul style="list-style-type: none"> <li>• Fanuc 32i Model B</li> </ul>	<b>ATC</b>	<ul style="list-style-type: none"> <li>• 40 Tool</li> </ul>
<b>Location</b> <ul style="list-style-type: none"> <li>• UNIT 3</li> </ul>	<b>Spindle Taper / RPM</b>	<ul style="list-style-type: none"> <li>• BT40 / 12000RPM</li> </ul>
	<b>No of Axis</b>	<ul style="list-style-type: none"> <li>• 3 Axis</li> </ul>
	<b>SCALE FEEDBACK</b>	<ul style="list-style-type: none"> <li>• YES</li> </ul>



If interested please contact @

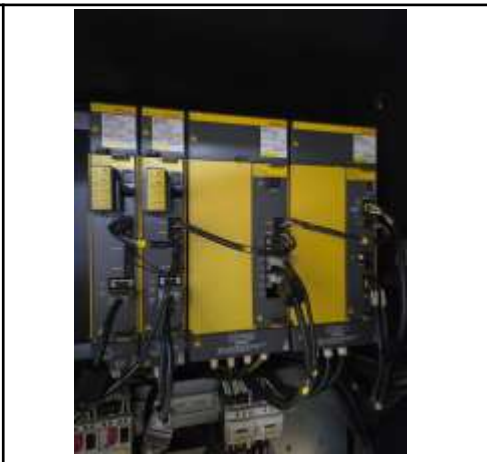

 7411531468 | 9538289333  
 9980022929 | 9980532197

 cncart@gmail.com




# Doosan DNM 650 – 3 AXIS – For SALE

<b>Machine type</b> <ul style="list-style-type: none"> <li>• VMC</li> </ul>	<b>X Axis</b>	<ul style="list-style-type: none"> <li>• 1250 mm</li> </ul>
<b>Make</b> <ul style="list-style-type: none"> <li>• Doosan, S Korea</li> </ul>	<b>Y Axis</b>	<ul style="list-style-type: none"> <li>• 670 mm</li> </ul>
<b>Model</b> <ul style="list-style-type: none"> <li>• DNM 650</li> </ul>	<b>Z Axis</b>	<ul style="list-style-type: none"> <li>• 625 mm</li> </ul>
<b>Year of Make</b> <ul style="list-style-type: none"> <li>• 2012</li> </ul>	<b>TABLE</b>	<ul style="list-style-type: none"> <li>• 1300 x 670 mm</li> </ul>
<b>Control</b> <ul style="list-style-type: none"> <li>• Fanuc i</li> </ul>	<b>ATC</b>	<ul style="list-style-type: none"> <li>• 30 Tool</li> </ul>
<b>Location</b> <ul style="list-style-type: none"> <li>• UNIT 3</li> </ul>	<b>Spindle Taper / RPM</b>	<ul style="list-style-type: none"> <li>• BT40 / 12000RPM</li> </ul>
	<b>WEIGHT</b>	<ul style="list-style-type: none"> <li>• 8500 KG</li> </ul>
	<b>SPINDLE MOTOR POWER</b>	<ul style="list-style-type: none"> <li>• 15KW</li> </ul>



If interested please contact @


 7411531468 | 9538289333  
 9980022929 | 9980532197


 cncart@gmail.com




# YCM MV Series 86A– For SALE

<b>Machine type</b> <ul style="list-style-type: none"> <li>• VMC</li> </ul>	<b>X Axis</b> <ul style="list-style-type: none"> <li>• 860 mm</li> </ul>
<b>Make</b> <ul style="list-style-type: none"> <li>• Yeong Chin Machinery</li> </ul>	<b>Y Axis</b> <ul style="list-style-type: none"> <li>• 510 mm</li> </ul>
<b>Model</b> <ul style="list-style-type: none"> <li>• MV 86A</li> </ul>	<b>Z Axis</b> <ul style="list-style-type: none"> <li>• 510 mm</li> </ul>
<b>Year of Make</b> <ul style="list-style-type: none"> <li>• 2012</li> </ul>	<b>TABLE</b> <ul style="list-style-type: none"> <li>• 950 x 600 mm</li> </ul>
<b>Control</b> <ul style="list-style-type: none"> <li>• FANUC MXP 200i</li> </ul>	<b>ATC</b> <ul style="list-style-type: none"> <li>• 20 Tool</li> </ul>
<b>Location</b> <ul style="list-style-type: none"> <li>• UNIT 3</li> </ul>	<b>Spindle Taper / RPM</b> <ul style="list-style-type: none"> <li>• BT40 / 10000RPM.</li> </ul>
	<b>Table Load Capacity</b> <ul style="list-style-type: none"> <li>• 600 kg</li> </ul>
	<b>SPINDLE MOTOR POWER</b> <ul style="list-style-type: none"> <li>• 15KW</li> </ul>



If interested please contact @


 7411531468 | 9538289333  
 9980022929 | 9980532197


 cncart@gmail.com



# NTC JAPAN NV 5000— For SALE

<b>Machine type</b> <ul style="list-style-type: none"><li>• VMC</li></ul>	<b>X Axis</b>	<ul style="list-style-type: none"><li>• 1120 mm</li></ul>
<b>Make</b> <ul style="list-style-type: none"><li>• NTC JAPAN</li></ul>	<b>Y Axis</b>	<ul style="list-style-type: none"><li>• 550 mm</li></ul>
<b>Model</b> <ul style="list-style-type: none"><li>• ZV 5000</li></ul>	<b>Z Axis</b>	<ul style="list-style-type: none"><li>• 550 mm</li></ul>
<b>Year of Make</b> <ul style="list-style-type: none"><li>• 2005</li></ul>	<b>TABLE</b>	<ul style="list-style-type: none"><li>• 1295 x 600 mm</li></ul>
<b>Control</b> <ul style="list-style-type: none"><li>• Fanuc 18i MB</li></ul>	<b>ATC</b>	<ul style="list-style-type: none"><li>• 24 Tool</li></ul>
<b>Location</b> <ul style="list-style-type: none"><li>• UNIT 1</li></ul>	<b>Spindle Taper / RPM</b>	<ul style="list-style-type: none"><li>• HSK63 / 12000RPM</li></ul>
	<b>No of Axis</b>	<ul style="list-style-type: none"><li>• 4 AXIS</li></ul>
	<b>SPINDLE MOTOR POWER</b>	<ul style="list-style-type: none"><li>• 15KW</li></ul>



If interested please contact @



7411531468 | 9538289333  
9980022929 | 9980532197



cncart@gmail.com




# S33-5XA MAKINO– For SALE

<b>Machine type</b> <ul style="list-style-type: none"> <li>• 5-Axis Vertical Machining Center</li> </ul>	<b>X Axis</b>	<ul style="list-style-type: none"> <li>• 450 mm</li> </ul>
<b>Make</b> <ul style="list-style-type: none"> <li>• MAKINO</li> </ul>	<b>Y Axis</b>	<ul style="list-style-type: none"> <li>• 450 mm</li> </ul>
<b>Model</b> <ul style="list-style-type: none"> <li>• S33-5XA</li> </ul>	<b>Z Axis</b>	<ul style="list-style-type: none"> <li>• 450 mm</li> </ul>
<b>Year of Make</b> <ul style="list-style-type: none"> <li>• 2012</li> </ul>	<b>TABLE</b>	<ul style="list-style-type: none"> <li>• 1000 x 500 mm</li> </ul>
<b>Control</b> <ul style="list-style-type: none"> <li>• Fanuc i</li> </ul>	<b>ATC</b>	<ul style="list-style-type: none"> <li>• 30 Tool</li> </ul>
<b>Location</b> <ul style="list-style-type: none"> <li>• UNIT 3</li> </ul>	<b>Spindle Taper / RPM</b>	<ul style="list-style-type: none"> <li>• BT40 / 8000RPM</li> </ul>
	<b>No of Axis</b>	<ul style="list-style-type: none"> <li>• 5 Axis (X, Y, Z, A, C)</li> </ul>
	<b>SPINDLE MOTOR POWER</b>	<ul style="list-style-type: none"> <li>• 15KW</li> </ul>



If interested please contact @

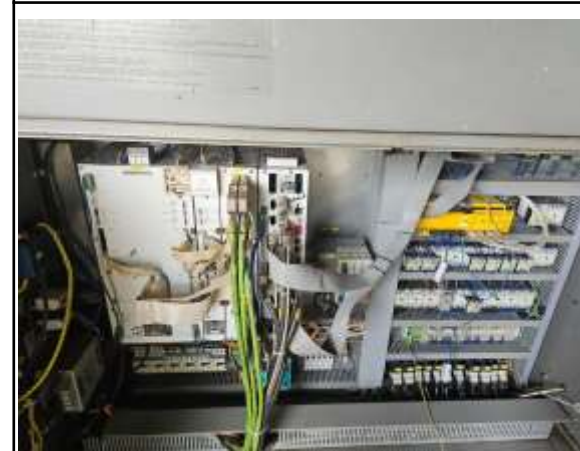

 7411531468 | 9538289333  
 9980022929 | 9980532197


 cncart@gmail.com



# Deckel Maho DMC 50– For SALE

<b>Machine type</b> <ul style="list-style-type: none"><li>• VMC</li></ul>	<b>X Axis</b>	<ul style="list-style-type: none"><li>• 500 mm</li></ul>
<b>Make</b> <ul style="list-style-type: none"><li>• DMG MORI, Germany</li></ul>	<b>Y Axis</b>	<ul style="list-style-type: none"><li>• 450 mm</li></ul>
<b>Model</b> <ul style="list-style-type: none"><li>• DMC 50</li></ul>	<b>Z Axis</b>	<ul style="list-style-type: none"><li>• 400 mm</li></ul>
<b>Year of Make</b> <ul style="list-style-type: none"><li>• 2012</li></ul>	<b>TABLE</b>	<ul style="list-style-type: none"><li>• Ø 500 mm (rotary table)</li></ul>
<b>Control</b> <ul style="list-style-type: none"><li>• Heidenhain iTNC 530</li></ul>	<b>Feed Rate (Rapid Traverse)</b>	<ul style="list-style-type: none"><li>• Up to 30 m/min</li></ul>
<b>Location</b> <ul style="list-style-type: none"><li>• UNIT 3</li></ul>	<b>Spindle Taper / RPM</b>	<ul style="list-style-type: none"><li>• SK40 / 12000RPM</li></ul>
	<b>No of Axis</b>	<ul style="list-style-type: none"><li>• 5 Axis (X, Y, Z + B + C)</li></ul>
	<b>Spindle Motor Power</b>	<ul style="list-style-type: none"><li>• 15KW</li></ul>



If interested please contact @



7411531468 | 9538289333  
9980022929 | 9980532197

 [cncart@gmail.com](mailto:cncart@gmail.com)




# Deckel maho 1035 V– For SALE

<b>Machine type</b> <ul style="list-style-type: none"><li>• VMC</li></ul>	<b>X Axis</b>	<ul style="list-style-type: none"><li>• 1035 mm</li></ul>
<b>Make</b> <ul style="list-style-type: none"><li>• Deckel maho</li></ul>	<b>Y Axis</b>	<ul style="list-style-type: none"><li>• 560 mm</li></ul>
<b>Model</b> <ul style="list-style-type: none"><li>• 1035V</li></ul>	<b>Z Axis</b>	<ul style="list-style-type: none"><li>• 510 mm</li></ul>
<b>Year of Make</b> <ul style="list-style-type: none"><li>• 2009</li></ul>	<b>TABLE</b>	<ul style="list-style-type: none"><li>• 1200 x 560 mm</li></ul>
<b>Control</b> <ul style="list-style-type: none"><li>• Fanuc 32i</li></ul>	<b>ATC</b>	<ul style="list-style-type: none"><li>• 20 Tool</li></ul>
<b>Location</b> <ul style="list-style-type: none"><li>• UNIT 3</li></ul>	<b>Spindle Taper / RPM</b>	<ul style="list-style-type: none"><li>• SK40 / 8000RPM</li></ul>
	<b>TABLE LOAD</b>	<ul style="list-style-type: none"><li>• 800 KG</li></ul>
	<b>RAPID TRAVERSE</b>	<ul style="list-style-type: none"><li>• 24000m/min</li></ul>



If interested please contact @

 7411531468 | 9538289333  
9980022929 | 9980532197

 cncart@gmail.com



---

# Thank You