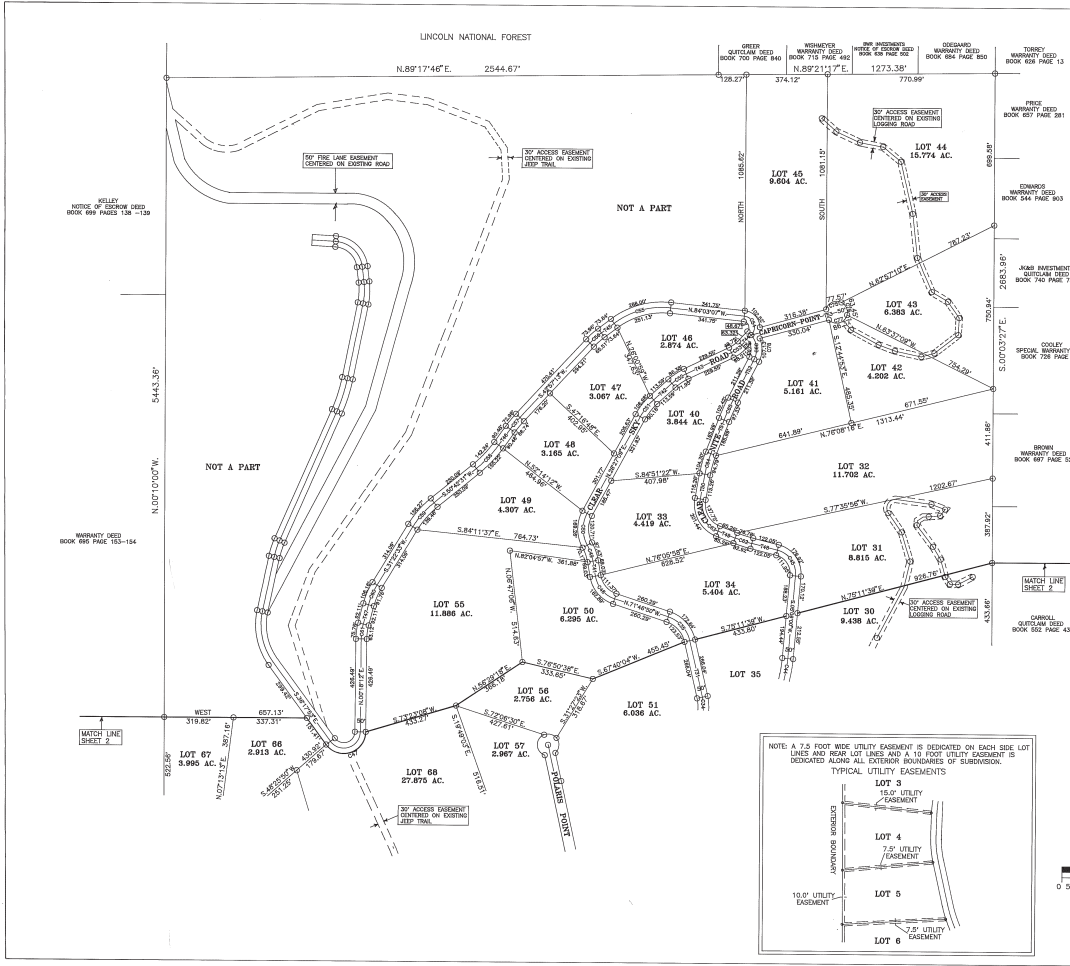


FINAL PLAT OF SKY COUNTRY ESTATES (NORTH PORTION OF SUBDIVISION)

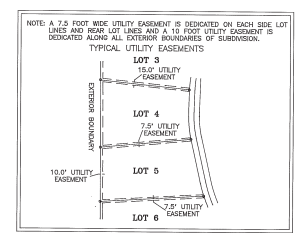


CURVE DATA

CURVE NO.	DELTA	RADIUS	TANGENT	CHORD	CHORD BEARING
C32	58.49°34"	148.09'	80.00'	148.09'	N.42°23'11"
C45	81°02'08"	111.16'	90.00'	144.44'	N.35°25'08"
C47	142°23'53"	101.07'	306.50'	181.81'	S.72°00'17"
C48	82°01'25"	133.08'	80.00'	137.13'	N.40°46'05"
C49	192°51'42"	228.23'	49.00'	78.80'	N.19°41'52"
C51	182°04'47"	149.32'	82.82'	144.98'	N.00°35'32"
C52	163°05'16"	283.54'	50.00'	88.88'	N.38°07'31"
C53	163°05'16"	274.17'	40.00'	79.16'	N.56°05'58"
C54	121°12'52"	198.00'	30.00'	68.87'	N.32°45'31"
C55	127°08'59"	52.12'	105.00'	93.45'	N.20°28'31"
C56	42°10'44"	365.52'	142.00'	268.85'	S.74°18'37"
C59	06°43'08"	411.88'	35.00'	69.75'	S.47°48'47"
C57	07°09'13"	558.10'	35.00'	69.88'	S.38°29'17"
C58	14°35'09"	572.80'	75.00'	146.73'	S.43°14'57"
C59	18°19'58"	440.32'	75.00'	147.87'	S.41°02'56"
C60	18°32'58"	343.80'	50.00'	88.98'	S.23°08'04"
C61	14°51'25"	274.88'	40.00'	69.44'	S.07°33'33"
C62	07°01'24"	651.04'	40.00'	79.88'	N.72°25'03"
C63	7°07'27"	133.14'	110.00'	168.80'	N.62°20'35"
C64	10°50'19"	523.00'	50.00'	99.85'	N.15°40'31"
C65	09°49'27"	581.78'	110.00'	168.80'	N.62°20'35"
C66	6°42'27"	99.04'	67.70'	111.79'	N.07°22'31"
C67	42°36'42"	74.04'	51.86'	58.58'	N.63°40'02"
C76	107°44'13"	50.00'	81.48'	77.57'	N.85°34'19"
C78	72°36'41"	50.00'	41.00'	63.46'	N.24°00'00"
C77	119°29'17"	50.00'	85.72'	88.38'	N.74°37'33"
C78	51°10'37"	152.04'	58.40'	107.10'	N.01°23'17"

TANGENT DATA

T31	N.122°17'11"	286.04'
T41	N.09°45'19"	69.03'
T42	N.47°31'51"	213.38'
T43	N.64°23'59"	228.25'
T44	N.43°08'08"	63.32'
T45	S.82°40'29"	73.84'
T46	S.80°23'23"	84.48'
T47	S.14°48'35"	92.11'
T48	N.75°58'11"	112.80'
T49	N.68°54'23"	85.29'
T50	N.01°13'13"	110.26'
T51	N.21°08'32"	185.89'
T52	N.67°59'23"	211.38'
T53	N.7°52'09"	407.13'
T54	N.43°06'08"	30.50'



I, WYATT A. SPARKS, A REGISTERED PROFESSIONAL SURVEYOR UNDER THE LAWS OF THE STATE OF NEW MEXICO, HEREBY CERTIFY THAT THIS PLAT WAS PREPARED FROM FIELD NOTES OF AN ACTUAL SURVEY MEETING THE MINIMUM REQUIREMENTS OF THE STANDARD FOR LAND SURVEYS AND IS TRUE AND CORRECT TO THE BEST OF MY KNOWLEDGE AND BELIEF, AND THAT NO ENCUMBRANCES EXIST EXCEPT AS NOTED HEREON AND THAT ALL IMPROVEMENTS ARE BOUNDARIES AS LOCATED BY THIS SURVEY.

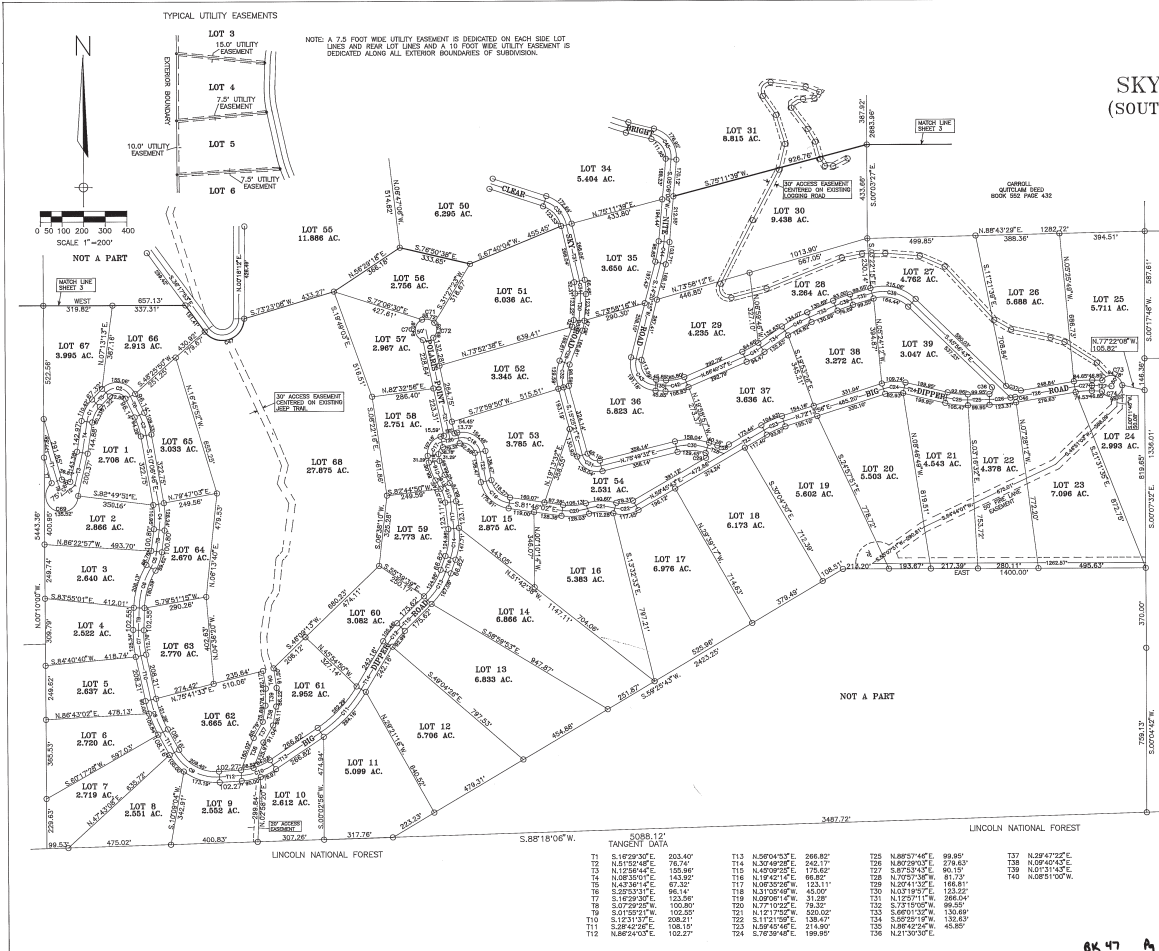
July 27, 1995
 WYATT A. SPARKS
 REGISTERED PROFESSIONAL SURVEYOR
 N.M. 8487

RUIDOSO LAND SURVEYING COMPANY
 SURVEYING-MAPPING-PLANNING
 P.O. BOX 537, RUIDOSO, N.M. 88345
 2807 1/2 SUBDIVISION, P.L. 25-2818

DATE: 7/30/94 SCALE: 1"=200'
 PLAT NUMBER: 65-44 JOB NUMBER: 1350
 SHEET NUMBER: 2 OF 3 PLATED BY: WYATT A. SPARKS
 RAS

BK 47 Pg 65 - 66 2 OF 3
SKY COUNTRY ESTATES

FINAL PLAT OF SKY COUNTRY ESTATES (SOUTH PORTION OF SUBDIVISION)



CURVE NO.	DATA	RADIUS	CHORD	CHORD BEARING
C1	382°10'00"	158.00'	90.00'	N.28°05'25"E
C2	110°31'30"	66.30'	100.00'	S.87°08'35"E
C3	124°05'00"	366.51'	600.00'	S.1°00'00"E
C4	1°35'41"	387.30'	60.00'	N.88°58'15"E
C5	240°45'00"	188.22'	60.00'	S.1°30'00"E
C6	18°38'15"	378.44'	60.00'	S.1°30'00"E
C7	145°08'00"	473.32'	60.00'	S.82°18'00"E
C8	81°04'00"	522.87'	60.00'	S.82°18'00"E
C9	84°52'30"	220.18'	140.00'	S.26°27'15"E
C10	87°00'00"	292.28'	60.00'	N.71°48'00"E
C11	28°15'00"	624.88'	140.00'	N.42°30'00"E
C12	141°28'00"	387.14'	60.00'	N.72°00'00"E
C13	127°30'00"	384.12'	60.00'	N.82°30'00"E
C14	241°12'00"	298.73'	70.00'	N.02°33'00"E
C15	243°14'00"	323.38'	60.00'	N.02°33'00"E
C16	2°59'48"	204.82'	40.00'	N.82°00'00"E
C17	84°14'00"	53.30'	50.00'	N.82°00'00"E
C18	87°21'14"	82.88'	60.00'	N.82°00'00"E
C19	102°00'00"	122.28'	60.00'	S.84°00'00"E
C20	321°05'00"	287.31'	60.00'	N.02°33'00"E
C21	141°18'00"	62.11'	60.00'	N.82°00'00"E
C22	127°30'00"	457.63'	50.00'	N.02°33'00"E
C23	170°09'15"	178.88'	50.00'	N.02°33'00"E
C24	142°28'00"	346.52'	50.00'	S.82°18'00"E
C25	89°08'45"	895.44'	60.00'	N.82°18'00"E
C26	113°11'30"	383.10'	40.00'	N.82°18'00"E
C27	132°38'11"	15.48'	72.00'	N.02°00'00"E
C28	28°45'11"	251.49'	72.00'	N.02°00'00"E
C29	28°45'11"	71.54'	72.00'	N.02°00'00"E
C30	308°04'49"	184.04'	60.00'	N.02°00'00"E
C31	171°14'00"	131.01'	30.00'	N.10°00'00"E
C32	187°11'18"	289.68'	30.00'	N.02°48'00"E
C33	187°11'18"	289.68'	30.00'	N.02°48'00"E
C34	187°11'18"	289.68'	30.00'	N.02°48'00"E
C35	134°48'41"	17.81'	43.13'	S.07°30'00"E
C36	187°08'00"	78.74'	40.00'	N.74°00'00"E
C37	187°08'00"	181.47'	110.00'	N.74°00'00"E
C38	87°08'00"	181.47'	40.00'	N.74°00'00"E
C39	87°08'00"	181.47'	40.00'	N.74°00'00"E
C40	171°12'18"	631.72'	40.00'	N.02°33'00"E
C41	171°12'18"	631.72'	40.00'	N.02°33'00"E
C42	171°12'18"	631.72'	40.00'	N.02°33'00"E
C43	103°02'44"	98.84'	120.00'	N.30°10'00"E
C44	284°02'00"	211.30'	60.00'	N.02°00'00"E
C45	310°03'00"	111.19'	60.00'	N.02°00'00"E
C46	182°32'00"	895.44'	11.00'	S.81°15'00"E
C47	182°32'00"	895.44'	11.00'	S.81°15'00"E
C48	182°32'00"	895.44'	11.00'	S.81°15'00"E
C49	182°32'00"	895.44'	11.00'	S.81°15'00"E
C50	182°32'00"	895.44'	11.00'	S.81°15'00"E
C51	182°32'00"	895.44'	11.00'	S.81°15'00"E
C52	182°32'00"	895.44'	11.00'	S.81°15'00"E
C53	182°32'00"	895.44'	11.00'	S.81°15'00"E
C54	182°32'00"	895.44'	11.00'	S.81°15'00"E
C55	182°32'00"	895.44'	11.00'	S.81°15'00"E
C56	182°32'00"	895.44'	11.00'	S.81°15'00"E
C57	182°32'00"	895.44'	11.00'	S.81°15'00"E
C58	182°32'00"	895.44'	11.00'	S.81°15'00"E
C59	182°32'00"	895.44'	11.00'	S.81°15'00"E
C60	182°32'00"	895.44'	11.00'	S.81°15'00"E
C61	182°32'00"	895.44'	11.00'	S.81°15'00"E
C62	182°32'00"	895.44'	11.00'	S.81°15'00"E
C63	182°32'00"	895.44'	11.00'	S.81°15'00"E
C64	182°32'00"	895.44'	11.00'	S.81°15'00"E
C65	182°32'00"	895.44'	11.00'	S.81°15'00"E
C66	182°32'00"	895.44'	11.00'	S.81°15'00"E
C67	182°32'00"	895.44'	11.00'	S.81°15'00"E
C68	182°32'00"	895.44'	11.00'	S.81°15'00"E
C69	182°32'00"	895.44'	11.00'	S.81°15'00"E
C70	182°32'00"	895.44'	11.00'	S.81°15'00"E
C71	182°32'00"	895.44'	11.00'	S.81°15'00"E
C72	182°32'00"	895.44'	11.00'	S.81°15'00"E
C73	182°32'00"	895.44'	11.00'	S.81°15'00"E
C74	182°32'00"	895.44'	11.00'	S.81°15'00"E
C75	182°32'00"	895.44'	11.00'	S.81°15'00"E
C76	182°32'00"	895.44'	11.00'	S.81°15'00"E
C77	182°32'00"	895.44'	11.00'	S.81°15'00"E
C78	182°32'00"	895.44'	11.00'	S.81°15'00"E
C79	182°32'00"	895.44'	11.00'	S.81°15'00"E
C80	182°32'00"	895.44'	11.00'	S.81°15'00"E
C81	182°32'00"	895.44'	11.00'	S.81°15'00"E
C82	182°32'00"	895.44'	11.00'	S.81°15'00"E
C83	182°32'00"	895.44'	11.00'	S.81°15'00"E
C84	182°32'00"	895.44'	11.00'	S.81°15'00"E
C85	182°32'00"	895.44'	11.00'	S.81°15'00"E
C86	182°32'00"	895.44'	11.00'	S.81°15'00"E
C87	182°32'00"	895.44'	11.00'	S.81°15'00"E
C88	182°32'00"	895.44'	11.00'	S.81°15'00"E
C89	182°32'00"	895.44'	11.00'	S.81°15'00"E
C90	182°32'00"	895.44'	11.00'	S.81°15'00"E
C91	182°32'00"	895.44'	11.00'	S.81°15'00"E
C92	182°32'00"	895.44'	11.00'	S.81°15'00"E
C93	182°32'00"	895.44'	11.00'	S.81°15'00"E
C94	182°32'00"	895.44'	11.00'	S.81°15'00"E
C95	182°32'00"	895.44'	11.00'	S.81°15'00"E
C96	182°32'00"	895.44'	11.00'	S.81°15'00"E
C97	182°32'00"	895.44'	11.00'	S.81°15'00"E
C98	182°32'00"	895.44'	11.00'	S.81°15'00"E
C99	182°32'00"	895.44'	11.00'	S.81°15'00"E
C100	182°32'00"	895.44'	11.00'	S.81°15'00"E

DISTANCES SHOWN ON CURVES ARE CHORD LENGTHS.

SPECIAL MATTERS SEE BOOK FOR PAGE 103-104.

I, WYATT A. SPARKS, A REGISTERED PROFESSIONAL SURVEYOR UNDER THE LAWS OF THE STATE OF NEW MEXICO, HEREBY CERTIFY THAT THIS PLAT WAS PREPARED FROM FIELD NOTES OF AN ACTUAL SURVEY MADE IN ACCORDANCE WITH THE MEASUREMENTS OF THE STANDARDS FOR LAND SURVEYS AND IS TRUE AND CORRECT TO THE BEST OF MY KNOWLEDGE AND BELIEF, AND THAT NO IMPROVEMENTS HAVE BEEN MADE SINCE THE SURVEY WAS MADE. I HAVE THEREFORE PLACED MY SIGNATURE AND SEAL ON THIS PLAT TO RECORD THE SAME AS SHOWN IN THEIR CORRECT LOCATION RELATIVE TO RECORD BOUNDARIES AS LOCATED BY THIS SURVEY.

DATE: June 22, 2024
 WYATT A. SPARKS
 PROFESSIONAL SURVEYOR
 N.M. 8487

RUIDOSO LAND SURVEYING COMPANY
 SURVEYING-MAPPING-PLANNING
 P.O. BOX 537, RUIDOSO, N.M. 85345
 505.752.5500 FAX 505.752.7818

DATE: June 22, 2024 SCALE: 1"=200'
 PLAN NUMBER: SKC 47 JOB NUMBER: 1300
 SHEET NUMBER: 2 OF 3 PLACED BY: WYATT A. SPARKS
 RAS: R.P.I.S. N.M. 8487

SKY COUNTRY ESTATES - BOOK 47 PG 67-68 - SHEET 3 OF 3