



DENZA D9

ELEGANCE REIMAGINED



Power that Redefines Elegance

The DENZA D9 is a game-changer in luxury mobility. This all-electric seven-seater MPV combines a powerful eight-in-one motor and a Blade Battery for an extraordinary driving experience while keeping safety at its core.

Available in front-wheel drive configuration, the DENZA D9 offers an impressive electric driving range of up to 600 km. With the comfort of second-row seats and spacious interior space, plus a massage function and an in-car refrigerator, the DENZA D9 enhances your journey.



Waistline to Meteor Track

The DENZA D9's design flows seamlessly from the classic waistline to the meteor track-inspired curves, combining elegance with dynamic performance.



Motion Front Grill

The DENZA D9's sleek exterior merges the precision of π with smooth motion, featuring a minimalist π -Motion front design that radiates modern elegance.



Arrow Tail Light

Our Arrow Tail Light adopt a refined vertical design, accentuated by the iconic π symbol to enhance the visual impact.



Middle Row Electric Sliding Door

With the touch of a button or a sensor activation, the door slides open automatically, providing a hands-free experience that adds a level of luxury and convenience.



Electric Trunk with Position Memory and Anti Pinch

The enormous 410L to 570L trunk (fits up to 7 large suitcases) can accommodate any lifestyle need. With enough room for a large air bed, the DENZA D9 takes luxury road trips to the next level.





10.25 Inch 3D Instrument Cluster



50 W Wireless Smartphone Charger
(1st & 2nd row)

Multi-color Ambient Lighting | 15.6 Inch Head Unit with Voice Control "Hi DENZA" | Three Zone Independently A/C



Seven Seats, Equally Superb

The second-row seats utilize a 1,080 mm long electric slide rail, creating a spacious interior for all passengers to enjoy the luxury of the DENZA D9.

Immersive Acoustics

The DENZA D9 is equipped with 14 Dynaudio speakers and 7.1-channel surround sound technology. Custom-tuned by Dynaudio's chief tuner Bjarke, it creates a concert-like auditory experience.



Integrated Refrigerator

The middle row has a smart beverage cabinet with a heating/cooling box, electric tray, and cup holders. The box supports cloud control, a forgotten-item reminder, and a temperature range -6 °C to 50 °C.

Retractable Table

The Retractable Table has a sleek, simple design and is built for comfort. It's easy to use, offering space for eating, working, or entertainment during your trip.





Massage & Ventilated Seat

The DENZA D9's captain seats feature an electric slide rail, creating an exceptionally spacious interior. The ergonomic, zero-gravity seats are made from the finest leather and include a ventilated seat function. They come equipped with ten-way electric adjustment, six-way adjustable sleeping headrests, electric leg rests, and wide-angle backrest adjustment with a massage function.

Panoramic Roof

A vast panoramic roof fills the cabin with natural light, while the double-layer glass blocks 99% of UV rays.





Comfortable Third Row

The DENZA D9 offers a comfortable third row with ample space, designed to ensure a relaxed and enjoyable ride for all passengers.

Multifunctional Dual LED Screen

With its multifunctional dual LED screen, the DENZA D9 ensures effortless control and a premium experience for passengers.

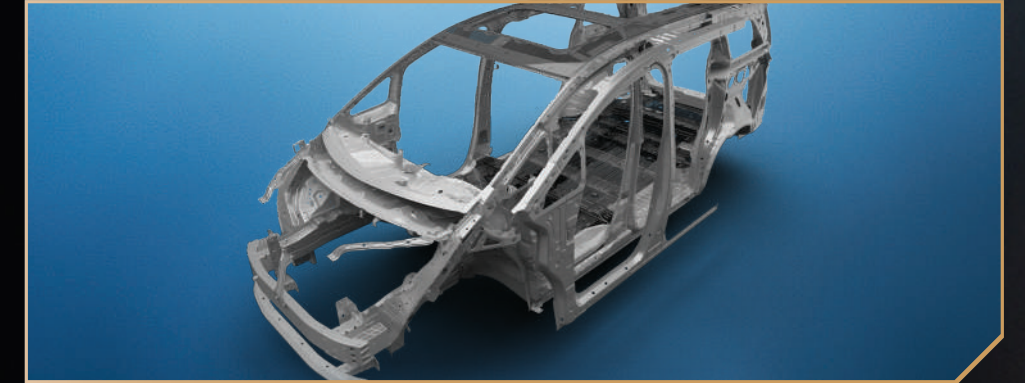


Detailed Safety Features & Performance



Complete Protection

All-round protection for everyone with strategically placed airbags in all three rows.



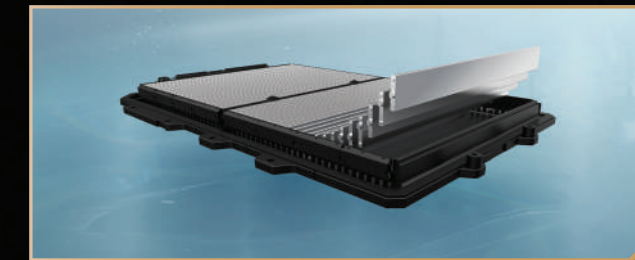
Uncompromised Safety

Uncompromising safety with a high-strength steel frame and advanced collision protection.



e-Platform 3.0

Exclusive platform combined with the power of Blade Battery, offers driving experience & journey like no other.



Blade Battery

Advanced battery technology for safely ultimate confident performance.



8 in 1 Electric Powertrain

DENZA D9 features an innovative powertrain that optimizes space and ultimate performance.

Wheelbase
3110 mm

Maximum Power
230 kW

Range (NEDC)
600 km

0-100km/h acceleration
9.5 s

Experience the Future of Luxury Mobility

You don't just need a car—you deserve a symbol of innovation and luxury.

With DENZA, you get advanced technology, sustainable performance, and sleek design. The DENZA D9 is an all-electric seven-seater MPV, combining power, elegance, and safety for an exceptional experience. Elevate your journey with DENZA.



Exterior Color

Take your pick from four stunning shades inspired by nature's magnificence.



Arctic White



Whale Sea Blue



Cosmos Black



Harbour Grey

Interior Color

Choose between two earth-toned interior colors, adorned with real white oak trims. Available for all exterior color.



Beige



Brown

Specification

Item	Advanced-FWD
Dimensions	
Overall Length (mm)	5,250
Overall Width (mm)	1,960
Overall Height (mm)	1,920
Wheelbase (mm)	3,110
Wheel Track - Front/Rear (mm)	1,675/1,675
Minimum Turning Radius (m)	5,95
Luggage Capacity - Minimum (L)	410
Luggage Capacity - Maximum (L)	2,310
Ground Clearance (mm) (Unladen)	155
Tire Size	235 / 60 R18
Curb Weight (kg)	2,764
Gross Vehicle Weight (kg)	3,338
Powertrain & Performance	
Battery Type	Blade Battery
Battery Capacity (kWh)	103.36
AC Charging Power (kW) - Maximum	11 (3-phase)
DC Charging Power (kW) - Maximum	166
Motor Type	Permanent Magnet Synchronous Motor
Maximum Power of The System (kW)	230
Maximum Torque of The System (N · m)	360
Driving Type	FWD
Acceleration Time 0-100km/h (s)	9.5
Driving Range: NEDC* (km)	600
Braking & Suspension	
Front Suspension	MacPherson Strut
Rear Suspension	Multi-link
Front and Rear Brake	Ventilated disc
Intelligent Power Brake Control System	•
FSD Variable Damping Suspension	•
Exterior	
LED Headlight	•
Auto Turn On Headlights	•
Follow Me Home Headlightop	•
LED Corner Auxiliary Lighting	•
LED Daytime Running Lights	•
LED Rear Flow Turn Signal	•
LED High Brake Light	•
Multi-color Charging Port Light	•
Rear Door Step Welcome Light	•

Item	Advanced-FWD
Exterior	
Rain Sensing Automatic Boneless Wiper	•
Power Sunroof (with Electric Sunshade)	•
1.1m² Panoramic Roof (with Electric Sunshade)	•
Heat-insulating Glass All Over The Vehicle	•
External Door Mirror Electric Adjustment, Heating and Defrosting	•
Electric Folding of Exterior Door Mirror	•
Driver and Front Passenger Electric Suction Doors	•
Middle Row Double Side Electric Sliding Doors	•
18-inch Wheels with Low Wind Resistance	•
Electric Trunk with Position Memory	•
Interior	
Knitted Fabric Roof	•
Multi-color Ambient Lighting	•
Tactile LED Front, Middle and Rear Interior Lights	•
Manual Anti-Dazzle Interior Rearview Mirrors	•
Multi-Function Steering Wheel	•
4-Way Manually Adjustable Steering Wheel	•
Three-Zone Independently Controlled Automatic Climate Control	•
Individual Air Vents For Middle & Rear Rows	•
Dynaudio 14-Speakers HiFi Audio System	•
Refrigerator	•
CN95 High Efficiency Filter with Activated Carbon	•
PM2.5 Filter System	•
Negative Ion Air Purifier	•
Remote High Temperature Sterilization and Disinfection	•
6 USB Ports (Type A+Type C)	•
Front 12V Car Power Port	•
3 Units of 50W Wireless Smartphone Charging (Front 1+Middle 2)	•
Double Layered Soundproof Glass	•
Privacy Glass	•
One Touch Lifting of Car Windows	•
Seat Configuration	
2+2+3 Three Row Seating Distribution	•
Premium Leather Seats	•
8-Way Power Adjustable Front Seats	•
Front Seat Headrest Wing Adjustment	•
Front Seat Ventilation	•
Driver Seat with Position Memory	•
4-Way Power Adjustable Lumbar Support Front Seat	•

Specification

Item	Advanced-FWD
Seat Configuration	
Center Table	•
Middle Seat with Position Memory	•
4-Way Power Adjustable Middle Seats	•
Massage Seat for Middle Seat	•
Middle Seat Ventilation	•
4-Way Power Adjustable Lumbar Support Middle Seat	•
Power Adjustable Legrests For Middle Seat	•
Manually Adjustable Middle Seat Headrest Flanks	•
Manually Adjustable Middle Seat Headrest Angle	•
Middle Row Boss Button for Passenger Seat	•
4-Way Manual Adjustment Rear Seats	•
Headrest Rear Seat Height Manually Adjustable	•
4 ISO-FIX Child Seat Anchors	•
60:40 Reclining Fold Down Rear Seats	•
New Energy Technology	
Reservation Charging System	•
Battery Intelligent Temperature Control Management System	•
Wide Temperature Range Efficient Heat Pump Air Conditioning	•
Smart Electronic Shift	•
Brake Energy Recovery System	•
Standard/Economy/Sport/Snow Driving Modes	•
V2L External Discharge Function	•
Ultra-Intelligent Interactive Cockpit	
15.6-inch Intelligent Touch Screen Display	•
10.25-inch 3D Instrument Cluster	•
Multi-functional Dual LCD Screen in The Center Armrest of The Middle Row	•
Four-tone Zone Voice Interaction System	•
In-car Bluetooth System	•
3D High-definition Transparent Panoramic Image System	•
Keyless Entry and One-touch Start System	•
Remote Start Vehicle	•
Remote Control Air Conditioning	•
Apple CarPlay*	•
Android Auto	•
4G Network Connection	•
OTA Remote Upgrade	•
Bluetooth Key (APP)*	•
NFC Car Key	•
Electronic Key	•

Item	Advanced-FWD
Driver Assistance Systems	
Adaptive Cruise Control (ACC)	•
Intelligent High Beam Control (IHBC)	•
Forward Collision Warning (FCW)	•
Automatic Emergency Braking (AEB)	•
Rear Collision Warning (RCW)	•
Rear Cross Traffic Alert (RCTA)	•
Rear Cross Traffic Brake (RCTB)	•
Blind Spot Detection (BSD)	•
Emergency Lane Keeping Assist (ELKA)	•
Traffic Sign Recognition (TSR)	•
Intelligent Cruise Control (ICC)	•
Front Parking Sensor	4
Rear Parking Sensor	4
High Precision Millimeter Wave Radar	3
Intelligent Driving Surround View Camera	4
Intelligent Driving High Perception Camera	1
Security Configuration	
Electric Power Steering (EPS)	•
Electric Parking Brake System (EPB)	•
Auto Hold	•
Hydraulic Brake Assist (HBA)	•
Intelligent Power Braking System	•
Electronic Stability Controller (ESC)	•
Traction Control System (TCS)	•
Controller Deceleration Parking (CDP)	•
Vehicle Dynamics Control (VDC)	•
Electronic Brakeforce Distribution (EBD)	•
Hill Hold Control (HHC)	•
Brake Disc Wiping (BDW)	•
Coordinated Regenerative Brake Systems (CRBS)	•
Roll Movement Intervention(RMI)	•
Hill Descent Control (HDC)	•
Door Opening Warning (DOW)	•
Tire Pressure Monitoring System (TPMS)	•
Automatic Unlocking by Collision Sensing	•
Front Airbags - Driver & Front Passenger	2
Front Side Airbags	2
Middle Row Side Airbags	2
Front, Middle and Rear Integrated Ultra-long Side Air Curtain	2

Specification

Item	Advanced-FWD
Security Configuration	
Front Row Double Pre-tighten Seat Belt	•
Middle Row Pretension Limited Force Seat Belt	•
Rear Row Emergency Locking Seat Belt	•
Tire Repair Kit	•
Exterior Color	
Whale Sea Blue	•
Arctic White	•
Cosmos Black	•
Harbour Grey	•
Interior Color	
Brown	•
Beige	•

Remarks:

1. In order to better meet customer needs, DENZA constantly develops and improves cars. Some configurations and specifications of models sold in the market may be different from those in this configuration table;
2. DENZA Link ultra-intelligent interactive cockpit will be continuously upgraded, the specific functions may be different from this configuration table, some functions need third-party software, hardware support or OTA implementation, the specific details please refer to the real car or the latest DENZA Link system;
3. Apple CarPlay® is a registered trade mark of Apple Inc.
4. Mobile phone NFC car key requires the mobile phone to have NFC function, and the mobile phone manufacturer authorized DENZA to enable the relevant functions of the mobile phone, the specific support for the mobile phone model, please contact the local DENZA direct store or the actual situation of the mobile phone you use;
5. About pure electric range: In actual road driving, different ambient temperatures, driving habits and maneuvers will lead to different endurance;



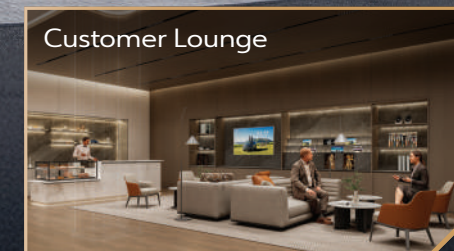
Brand Story

DENZA was founded in 2010 with a focus on creating luxury new energy vehicles. From the start, it has prioritized collaboration with users and aimed to build a smart, safe, and sensory-driven luxury car brand.

After 14 years of growth, DENZA has continued to innovate and strengthen its products. In 2022, the brand introduced the D9, N7, and N8 models, committed to offering a new luxury experience and optimizing travel for users worldwide, while opening up new possibilities for the future of electric luxury cars.

Delivering Luxury, Comfort, and the Best Service

More to come...



📍 **DENZA BIPO
GATOT SUBROTO**
Jl. Gatot Subroto Raya
No. 127, Kuningan,
Jakarta Selatan 12710

📍 **DENZA HAKA PLUIT**
Jl. Pluit Selatan Raya
No.8a, Pluit, Jakarta Utara
14440

📍 **DENZA HARMONY
KELAPA GADING**
Jl. Raya Boulevard Barat
Blok XB No.6, Kelapa Gading,
Jakarta Utara, 14240

📍 **DENZA ARISTA BSD**
Kav. Commercial The
Park, Kav 1.7, Jl. BSD
Raya Utama, BSD City,
Tangerang, 15331

📍 **DENZA BIPO DENPASAR**
Jl. Mahendradatta
No.97a, Padangsambian,
Denpasar Barat, Bali,
80119






Dealer Stamp

Denza Indonesia

www.denza.com/id

Copyright © Denza Indonesia Company. All Rights Reserved.

 @denza_idn  @DenzaIndonesia  @denza_idn

Call Center

0800 1696969

Email : denza.care@byd.com

