

# COMPANY

# Profile

## TABLE OF CONTENTS

ABOUT US.....2

MISSION.....2

VISION .....2

BUILDING CONSTRUCTION SERVICES .....2

FACILITY MAINTENANCE SERVICES.....2

CIVIL AND EARTHWORKS SERVICES.....3

OUR VALUES .....3

ENGINEERING AND INDUSTRIAL SUPPORT SERVICES .....4

ENGINEERING AND TECHNICAL SERVICES.....5

OUR CORE ETHICS.....6

MONITORING AND EVALUATION .....6

EQUIPMENT AND PLANT HIRE.....6

LABOR SUPPLY AND MANAGEMENT.....6

MANAGEMENT STRUCTURE.....7



# ABOUT US

ALUPA Earthmoving Solutions Ltd is a 100% Papua New Guinean-owned company established in July 2021 to provide reliable, efficient, and high-quality industrial and construction support services across Papua New Guinea. Since our inception, we have been committed to delivering tailored solutions in civil works, earthmoving, maintenance, metal fabrication, and industrial support—serving the mining, construction, and infrastructure sectors.

Rooted in the heart of Porgera District, we aim to empower local communities through employment, skills development, and sustainable business practices. Our team combines technical expertise with a strong understanding of local conditions, ensuring every project meets both international standards and the unique needs of our clients.

With a focus on safety, integrity, and excellence, ALUPA Earthmoving Solutions Ltd continues to grow as a trusted partner in building infrastructure and driving development in Papua New Guinea.

# MISSION

To deliver reliable, high-quality industrial and construction services that contribute to the operational excellence and sustainable development of Papua New Guinea. We are committed to safety, innovation, and empowering local communities through employment, skills development, and responsible business practices.

# VISION

To be a leading indigenous company in Papua New Guinea, recognized for excellence in industrial services, civil construction, and community-driven development—building lasting infrastructure and opportunities for future generations.

## BUILDING CONSTRUCTION SERVICES

- ✓ Site Preparation and Setting Out
- ✓ Foundation Works
- ✓ Superstructure Construction
- ✓ Bricklaying and Blockwork
- ✓ Roofing Installation
- ✓ Plastering and Rendering
- ✓ Doors, Windows, and Glazing
- ✓ Flooring Works
- ✓ Painting and Decorating
- ✓ Plumbing and Sanitary Installation
- ✓ Electrical Installation
- ✓ Ceiling and Partitioning Works
- ✓ Finishing and Fit-Out
- ✓ Site Cleanup and Handover



## FACILITY MAINTENANCE SERVICES

### Plumbing Services

- ✓ Our qualified plumbers handle installation, repair, and maintenance of water supply systems, drainage lines, toilets, taps, showers, hot water units, and waste disposal systems in homes, offices, and commercial buildings.

### Electrical Maintenance

- ✓ We provide electrical repairs, rewiring, switchboard upgrades, lighting installations, appliance connections, and fault-finding for residential and commercial clients—all compliant with safety codes and standards.

### Carpentry and General Repairs

- ✓ From fixing doors, windows, cabinets, and roofing to general woodwork repairs, our carpentry team ensures structural integrity and aesthetic quality in homes and facilities.

### Painting and Surface Finishing

- ✓ We deliver interior and exterior painting, touch-ups, wall repairs, waterproofing, and decorative finishes to keep buildings looking clean, modern, and protected from weather damage.

### Tiling and Flooring Services

- ✓ We install ceramic, porcelain, vinyl, and stone tiles as well as concrete, wooden, or laminate flooring for kitchens, bathrooms, patios, and living areas.



# CIVIL AND EARTHWORKS SERVICES

## CIVIL WORKS

### Road Construction

Involves the design, grading, and surfacing of roads and highways, including culverts, shoulders, and drainage systems.

### Drainage and Stormwater Management

Designing and constructing systems like culverts, gutters, and retention basins to control water flow and prevent flooding or erosion.

### Concrete Works

Includes construction of concrete structures such as slabs, footpaths, foundations, retaining walls, curbs, and channels.

### Retaining Structures

Design and construction of walls or embankments to hold back soil, especially on sloped terrain, for stability and erosion control.

### Bridge and Culvert Construction

Building structures for crossing over watercourses or low-lying areas to maintain connectivity and improve transport infrastructure.

### Subdivision & Site Development

Preparing land for residential, commercial, or industrial use, including earthworks, roads, services (water, power), and landscaping.

### Utility Installation and Trenching

Excavation and laying of underground services such as water pipelines, sewage systems, power cables, and telecoms.



## EARTHWORKS

### Excavation and Site Clearing

Removal of vegetation, topsoil, and debris to prepare the land for construction or development.

### Cut and Fill Operations

Earthmoving work to level terrain by cutting high areas and filling low areas, ensuring a stable platform for construction.

### Bulk Earthworks

Large-scale movement of soil or rock to form foundations, embankments, or backfills for major infrastructure or industrial projects.

### Land Grading and Levelling

Shaping the land surface to specified slopes and elevations for construction, drainage, or agricultural use.

### Compaction Ground Stabilization

Using rollers, compactors, or chemical additives to improve soil density and stability, essential for load-bearing capacity.

### Slope Protection and Erosion Control

Installation of gabions, geotextiles, or vegetation to stabilize slopes and prevent erosion in vulnerable areas.

### Haulage and Material Transport

Transportation of soil, rock, gravel, and construction materials to or from project sites using tippers, dump trucks, or loaders.

### Drilling Activities

Rotary Drilling, Percussion Drilling, Auger Drilling, Directional Drilling, Core Drilling, Sonic Drilling, Mud Rotary Drilling, Air Drilling, Hydraulic Drilling, Vibratory Drilling, Geothermal Drilling, Underground Drilling.

## OUR VALUES

**ACCOUNTABILITY:** We are involved, responsible and dedicated to our organisation, its investors and our customers.

**LEADERSHIP:** Our endeavour is to work smartly, always finding ways to improve our service offering,

**INNOVATION:** We are determined to find the best available solutions to solve problems quickly and effectively.

**PARTNERSHIP:** We try to find common ground in all our interactions, as we all like to work with people that we can relate to.

**COMMITMENT:** We are deadline-driven to achieve maximum productivity on all levels.

**COURAGE:** WE are bold, always striving to believe in bigger and better achievements.

**INTEGRITY:** We act with commitment, honesty, openness and respect for others.

**SUPPORT:** We are in the industry of service and know that our primary focus on offering the very best levels of support is what sets us apart from our competitors.

# ENGINEERING & INDUSTRIAL SUPPORT SERVICES

## Mechanical and Structural Engineering Services



### Metal Fabrication and Welding

- ✓ Involves cutting, shaping, and assembling metal components for structural supports, frames, platforms, pipelines, machinery, and other custom installations.
- ✓ We provide custom metal fabrication and high-quality welding services for structural, mechanical, and industrial components. Our team fabricates beams, frames, platforms, handrails, brackets, and other assemblies using mild steel, stainless steel, and aluminium.
- ✓ All work is completed to meet structural standards and project specifications.



## Surface Preparation and Protective Coating Services

### Sandblasting and Spray Painting

- ✓ Sandblasting cleans and prepares metal or concrete surfaces by removing rust, paint, and contaminants.
- ✓ We offer industrial surface preparation and protective coating services. Our sandblasting service effectively removes rust, paint, and contaminants, ensuring surfaces are clean and ready for treatment. Spray painting is performed using industrial-grade coatings to protect assets from corrosion and wear, especially in mining, marine, and heavy construction environments.
- ✓ Spray painting applies protective or decorative coatings to prevent corrosion and enhance appearance, especially in marine, mining, and industrial environments.



## Access and Safety Services

### Scaffolding Erection and Dismantling

- ✓ Installation of temporary structures to provide safe access for workers during construction, maintenance, or repair of buildings, bridges, or other structures.
- ✓ We supply, erect, and dismantle scaffolding systems for construction, maintenance, and industrial access requirements. Our scaffolding complies with safety standards, providing secure platforms for workers at various heights. Services include mobile, fixed, and suspended scaffolding suitable for building facades, bridges, tanks, and other structures.



# ENGINEERING AND TECHNICAL SERVICES



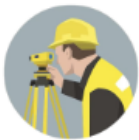
## Civil Engineering Services

Involves planning, designing, and supervising the construction of infrastructure projects like roads, bridges, buildings, and drainage systems.



## Geotechnical Engineering

Focuses on soil, rock, and underground water conditions to determine suitability for construction and recommend foundation designs.



## Surveying and Mapping

Provides accurate measurements of land and terrain using tools like GPS, drones, and total stations, essential for planning and design.



## Structural Engineering

Ensures that buildings and structures can withstand loads and forces. Involves structural analysis, design, and safety assessments.



## Electrical Engineering

Deals with electrical systems, including power distribution, lighting, and control systems in residential, commercial, or industrial setups.



## Environmental Engineering

Focuses on solutions to environmental problems such as waste management, pollution control, water treatment, and sustainable development.



## Project Management and Monitoring

Oversees engineering projects to ensure they are completed on time, within budget, and according to specifications and safety standards.



## Technical Drawing and CAD Services

Produces precise 2D/3D drawings and models using Computer-Aided Design (CAD) tools for engineering design, analysis, and construction.



## Inspection and Quality Assurance

Provides technical inspections and testing to ensure that materials, structures, and systems meet industry standards and specifications.

## OUR CORE ETHICS

- We value employees as our most precious resource
- Ensure safety and quality in all processes
- No compromise on work quality
- Demonstrate our credibility by fulfilling commitments
- Increase our technology and innovative leadership quality
- Take responsibility for our decisions at individual & company levels
- Aspire to the highest level of excellence in our services
- Believe in moving forward for optimum results
- Remain positive and looking ahead are essential for achieving goals
- Fulfil our promises to stakeholders, clients, and employees alike

## MONITORING AND EVALUATION (M&E)

ALUPA Earthmoving Solutions offering regarding M&E includes development of M&E plans, Project Implementation plans and M&E frameworks. Continuous data collection before, during and after the program roll out (monitoring), as well as measuring outcomes, impact and effectiveness of programs (evaluation).

The reliability of conclusions and evaluations depends to a larger extent on the manner in which monitoring and evaluation is conducted. To assess performance, it is necessary to select, before the implementation of the project, indicators, which will permit the rating of the targeted outputs and outcomes. In our knowledge based, an outcome indicator has two components: the baseline, which is the situation before the program or project begins, and the target, which is the expected situation at the end of the project.

The progress and success of projects is vital to project sustainability, thus comprehensive M&E and reporting resources are essential. Our support includes designing and implementing M&E systems, M&E system strengthening, M&E frameworks, capacity building to ensure stakeholders observe accurate and up to date M&E practices as well as assisting organizations in identifying optimum M&E technical support.

## EQUIPMENT & PLANT HIRE

ALUPA Earthmoving Solutions Ltd, offers a range of construction equipment that can be rented to meet your specific needs. All equipment is maintained to perfection to prevent downtime and to ensure optimum productivity throughout your project lifecycle.

Our experienced operators and drivers are equipped with the skills required to implement your project on time and within budget. They are dedicated to safety, they comply with standard operating procedures (SOP) and work well under pressure.

### PLANT AND EQUIPMENT LIST

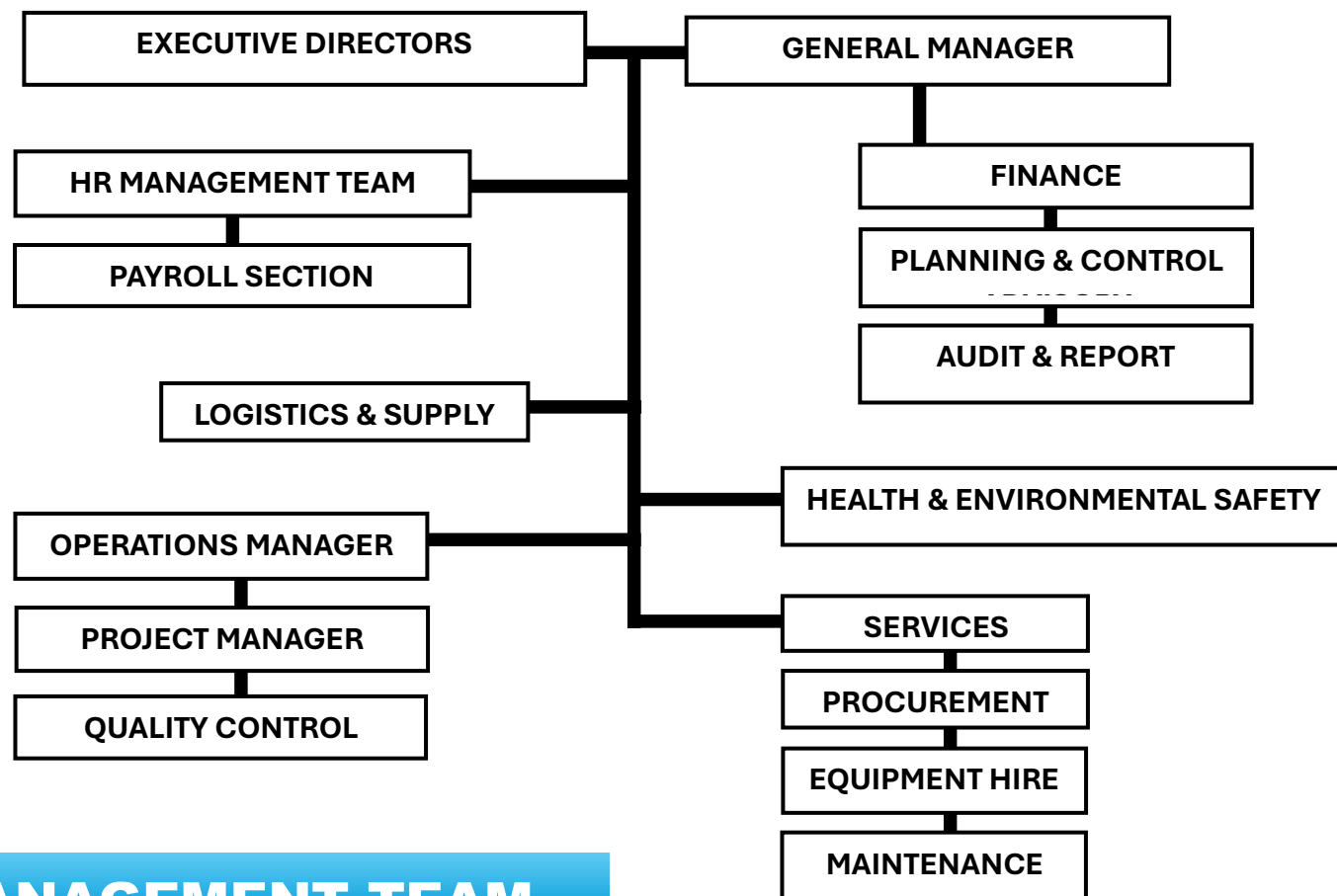
- SHOVELS & EXCAVATORS
- MOBILE HEAVY DUTY TRUCKS
- LOADERS WITH ATTACHMENTS
- DOZERS
- DIAMOND DRILLS
- JUMBO DRILLS
- SURFACE DRILLING RIGS
- GRADERS
- ROLLERS
- BECKOES
- UNDERGROUND LOADERS
- AD45, AD45B, AD55, ect.,
- IT LOADERS, FRONTHAND LOADERS, WHEEL DOZERS AND MORE.

## LABOR SUPPLY AND MANAGEMENT




We are committed and dedicated in supplying labor for the following services during the mill processing shutdown operations and maintenance.

Crusher Maintenance: Grinding Mill Maintenance: Flotation Cells Maintenance: Pumping System Checks: Instrumentation Calibration: Tailings Management: Emergency System Testing: Safety Review and Risk Assessment: Mobile Plant and Equipment Maintenance: Documentation and Reporting: Autoclave Maintenance and repair including many others.

# MANAGEMENT STRUCTURE



## MANAGEMENT TEAM

	<p>Newton Tanda completed his studies from UNITECH Lae and got a Bachelor in Geographic Information Science. Newton is the Project Manager and is looking forward to give his best in driving the business forward. Newton will be heavily involved with our planning, technical and research team.</p>
	<p>Mrs. Priscilla Jerry has been attached to Porgera mine for 12 years. During her term with the department of communication, she gained wealth of experience which will be of great value to ALUPA EARTHMOVING SOLUTIONS LIMITED. Mrs. Priscilla is responsible for office administration and purchasing.</p>
	<p>Rodney Steven is the CO-FOUNDER and the Managing Director of the company. Rodney has more than five years of experience in Mobile Fleet Operations &amp; Maintenance. Rodney gained his experience in operational management and Maintenance during his term with Underground Mobile Maintenance Workshop at Porgera Underground mine. His experience working with Porgera Gold Mining gives him a broad knowledge base to apply.</p>



**ALUPA EARTHMOVING SOLUTIONS  
LIMITED**

## CONTACT US

C/- NEW PORGERA LIMITED  
P. O. Box 484, MT HAGEN  
Western Highlands Province

Section 34, Allotment 13 – Paiam  
Town Porgera Enga Province

Email: [alupaems@gmail.com](mailto:alupaems@gmail.com)  
Website: [www.alupaems.com](http://www.alupaems.com)