

AGNUS DEI

(Tenore, Basso e Coro)

MOLTO SOSTENUTO
(Archi)

1

BASSO SOL.

2

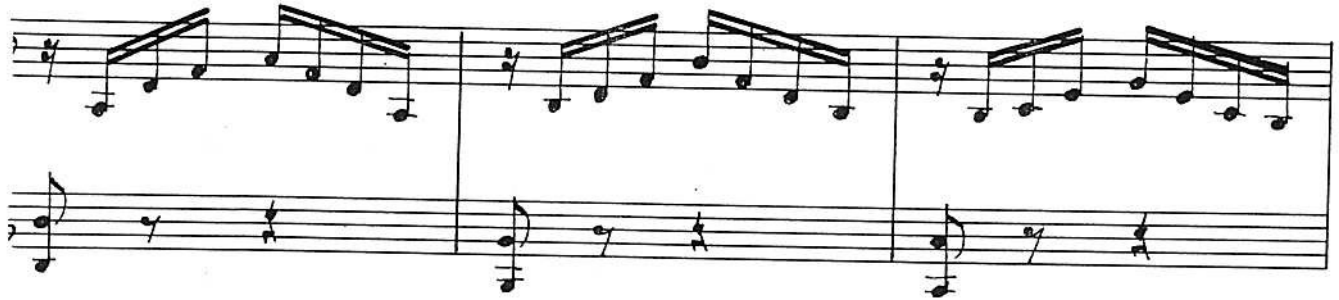
BASSO SOL.

A - gnus

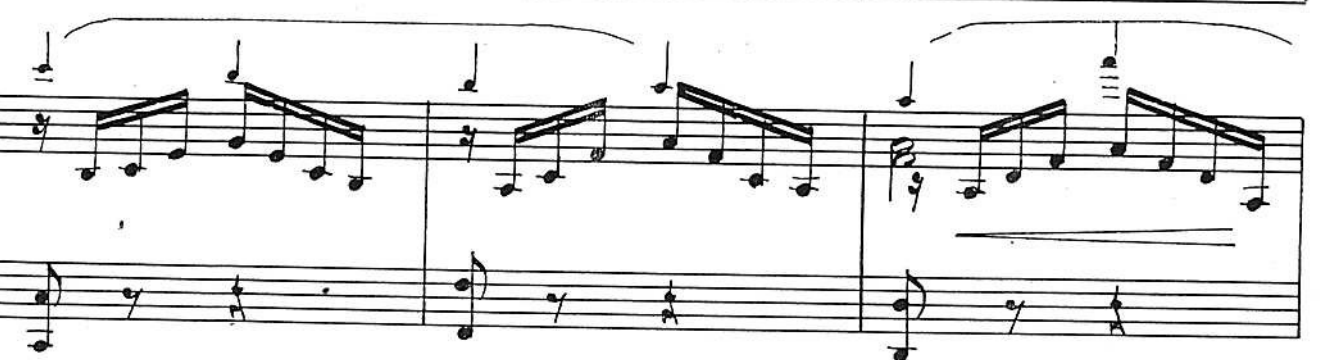
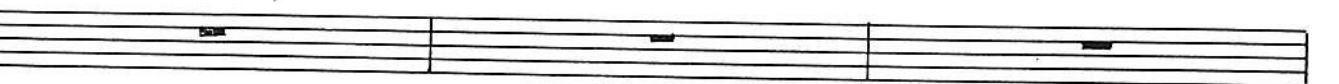
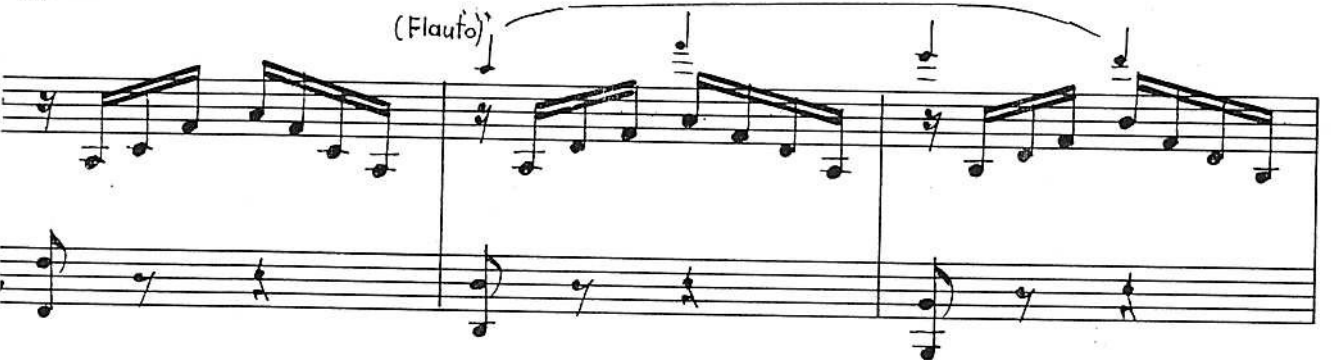
(Arpa)

BASSO SOL.

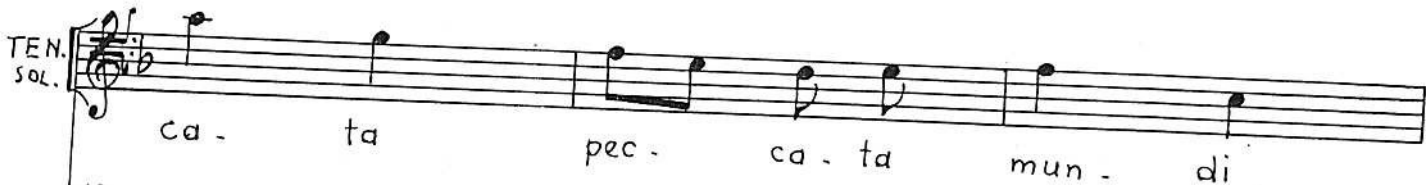
De - i qui tol - lis



3

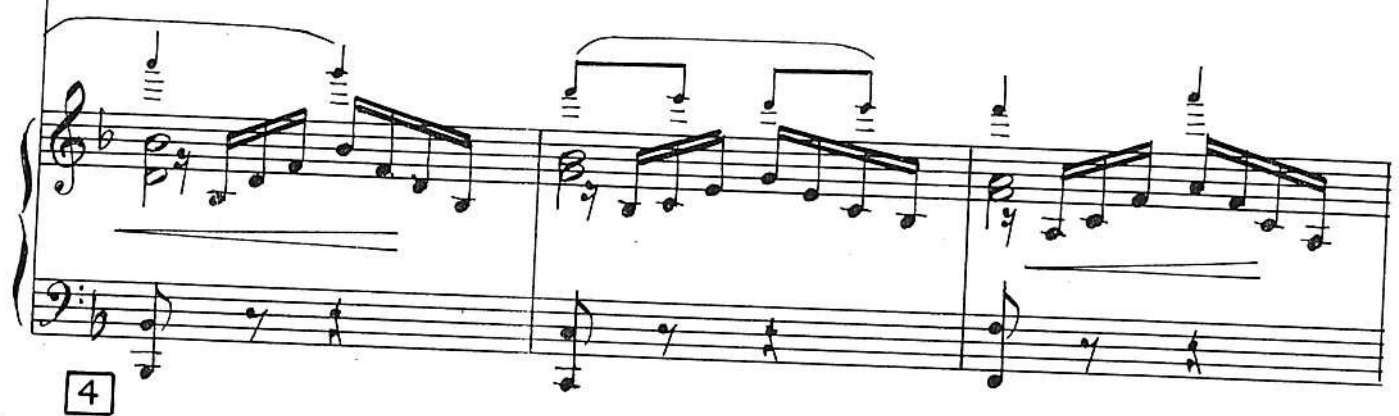
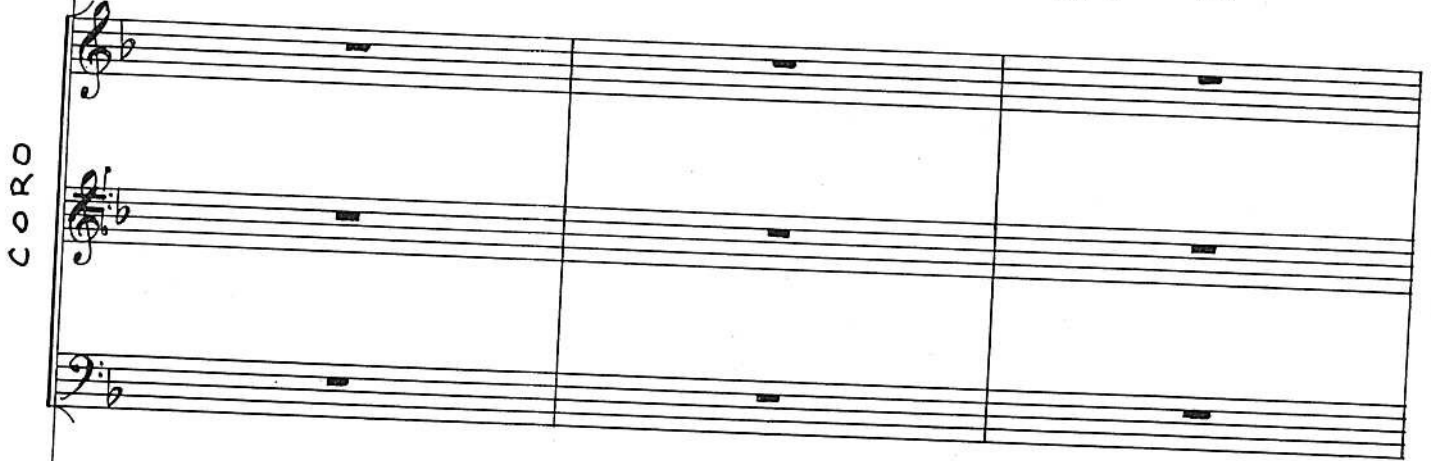


TEN. SOL.



ca - ta pec - ca - ta mun - di

CORO

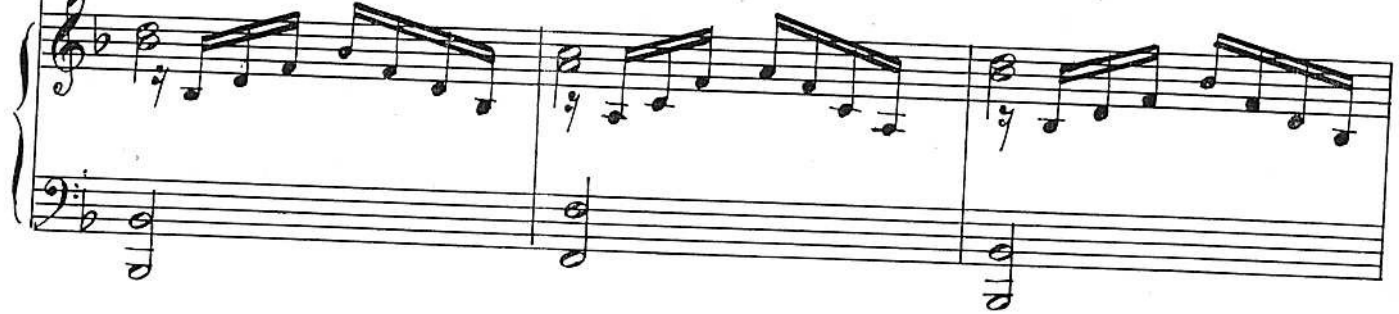


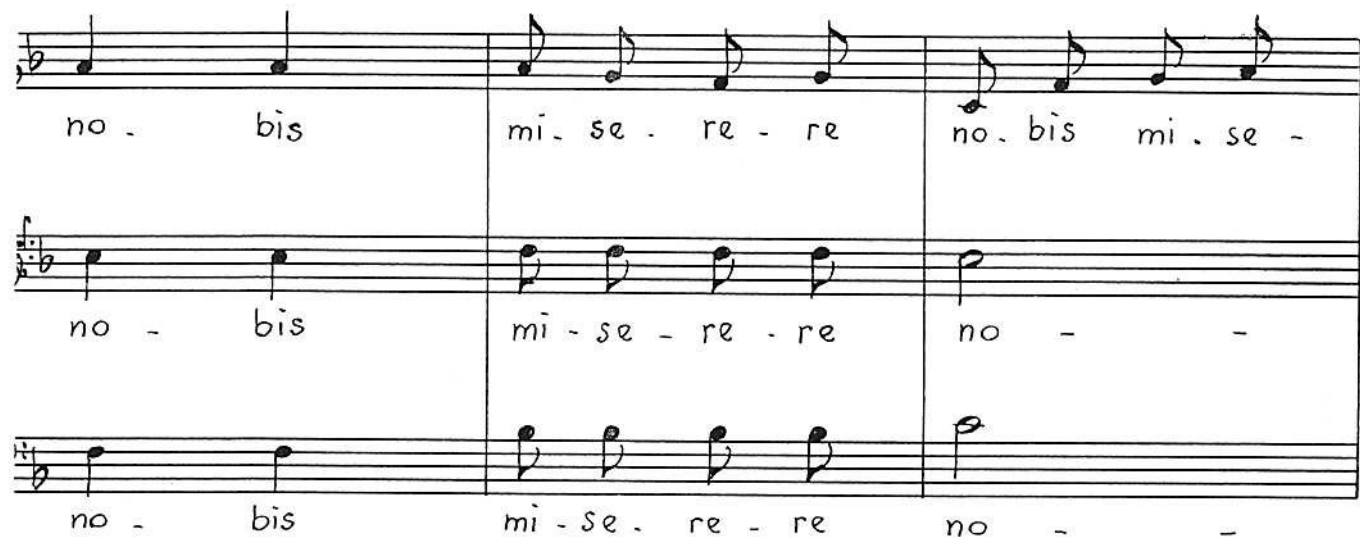
4

CORO



mi - se - re - re no - bis mi - se - re - re
mi - se - re - re no - bis mi - se - re - re
mi - se - re - re no - bis mi - se - re - re

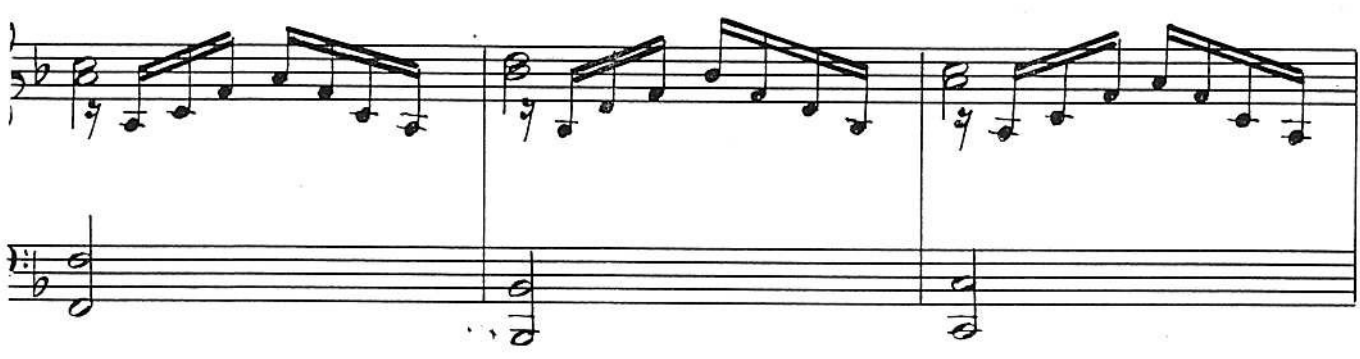




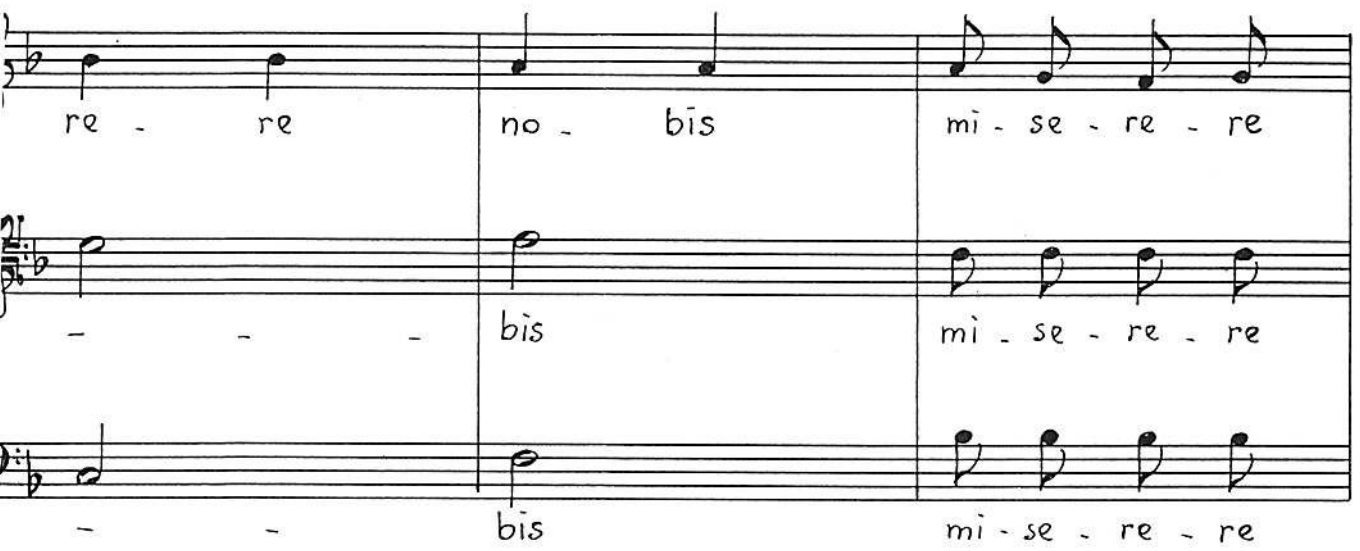
no - bis mi - se - re - re no - bis mi - se -

no - bis mi - se - re - re no - - -

no - bis mi - se - re - re no - - -



5



re - re no - bis mi - se - re - re

- - - bis mi - se - re - re

- - - bis mi - se - re - re

5



CORO

no - bis mi - se - re - re no - bis

no - bis mi - se - re - re no - bis

no - bis mi - se - re - re no - bis

The first system consists of three vocal staves (Soprano, Alto, Bass) and a piano accompaniment. The lyrics are 'no - bis mi - se - re - re no - bis'. The piano part features a rhythmic pattern of eighth notes in the right hand and a steady bass line in the left hand.

CORO

mi - se - re - re no - bis mi - se - re - re

mi - se - re - re no - - -

mi - se - re - re no - - -

The second system continues the vocal and piano parts. The lyrics are 'mi - se - re - re no - bis mi - se - re - re'. The piano accompaniment continues with the same rhythmic pattern, including some rests in the right hand.

6

EN.
OL.

A - gnus De - i

re.

bis.

bis.

CORO

6

(Flauto)

EN.
OL.

qui tol - lis pec -

ASSO
OL.

qui _____ tol - lis

TEN. SOL. ca - ta mun - di

BASSO SOL. mun - di

TEN. SOL.

BASSO SOL.

(Violini 1ⁱ)

TEN. SOL.

BASSO SOL.

8

mi - se - re - - - -
mi - se - re - - - -
mi - se - re - - - -

ff

Detailed description: This system contains the first three staves of a musical score. The top staff is a vocal line with lyrics 'mi - se - re' and a fermata over the final 're'. The middle and bottom staves are piano accompaniment, mirroring the vocal line's melody. A dynamic marking of *ff* (fortissimo) is placed above the piano part in the second measure.

8

ff

Detailed description: This system shows the piano accompaniment for the first system. The right hand features a series of sixteenth-note arpeggiated figures, while the left hand provides a simple harmonic accompaniment. A dynamic marking of *ff* is present in the second measure.

re no - bis.
re no - bis.
re no - bis.

pp

Detailed description: This system contains the next five staves. The vocal lines (top three staves) sing 're no - bis.' with a fermata over the final 'bis.'. The piano accompaniment (bottom two staves) continues with a similar arpeggiated texture. A dynamic marking of *pp* (pianissimo) is placed above the piano part in the second measure.

pp

Detailed description: This system shows the piano accompaniment for the second system. The right hand continues with arpeggiated sixteenth-note figures, and the left hand provides harmonic support. A dynamic marking of *pp* is present in the second measure.