

# COMPANY PROFILE



## ETHOS BUILDCON

### DIGGING EXCELLENCE

---



A SUSTAINABLE SOLUTION

INDUSTRY

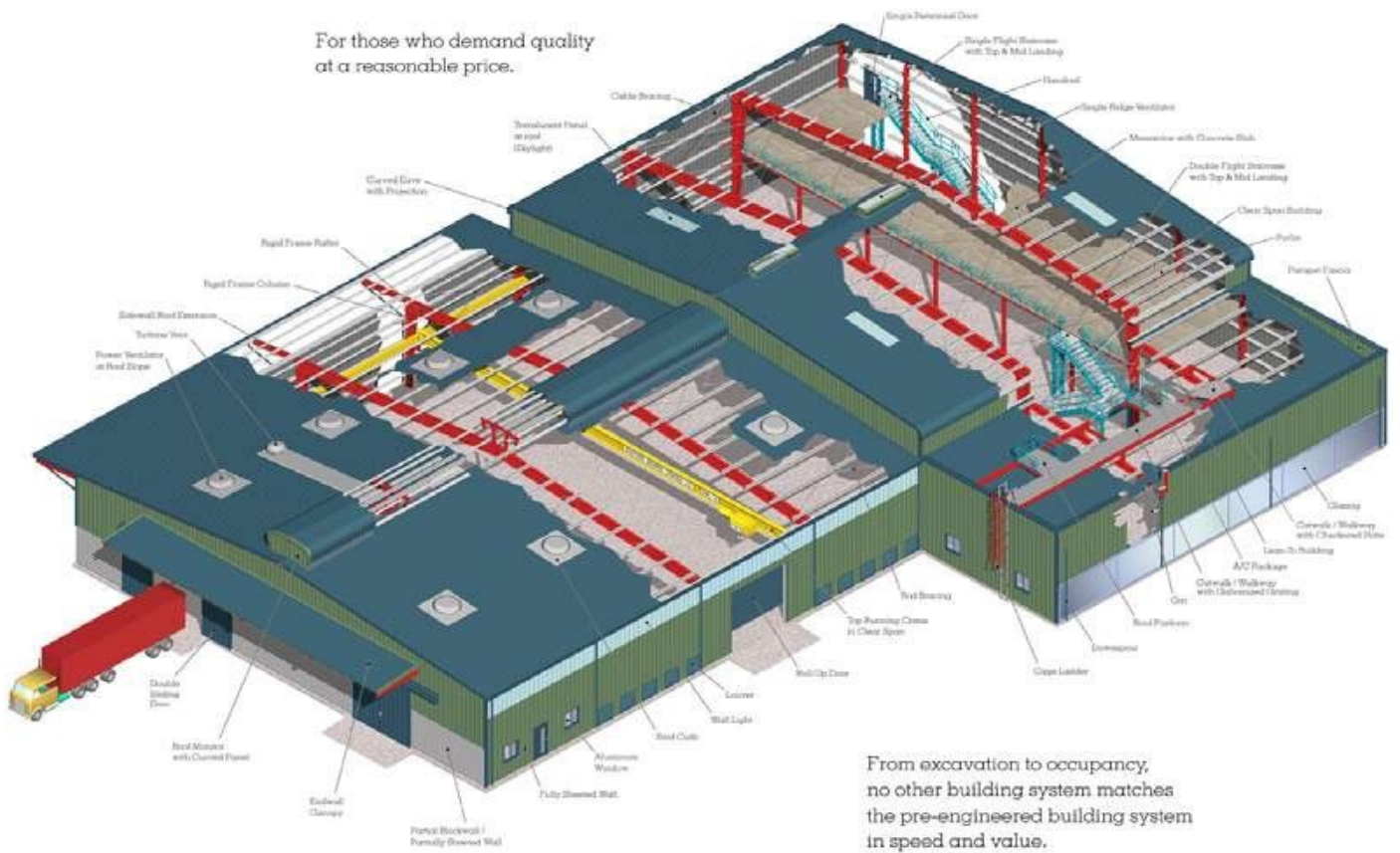


To supply high-quality steel products, providing related services and solutions to a worldwide client base while utilizing innovative technologies within an environment of motivated employees focused on continuous improvement, highest business standards, work ethics and corporate citizenship, leading to added value for our customers and sustained return on investment to our shareholders.

To be the world's most reliable and innovative manufacturer, service and solution provider in the steel industry.

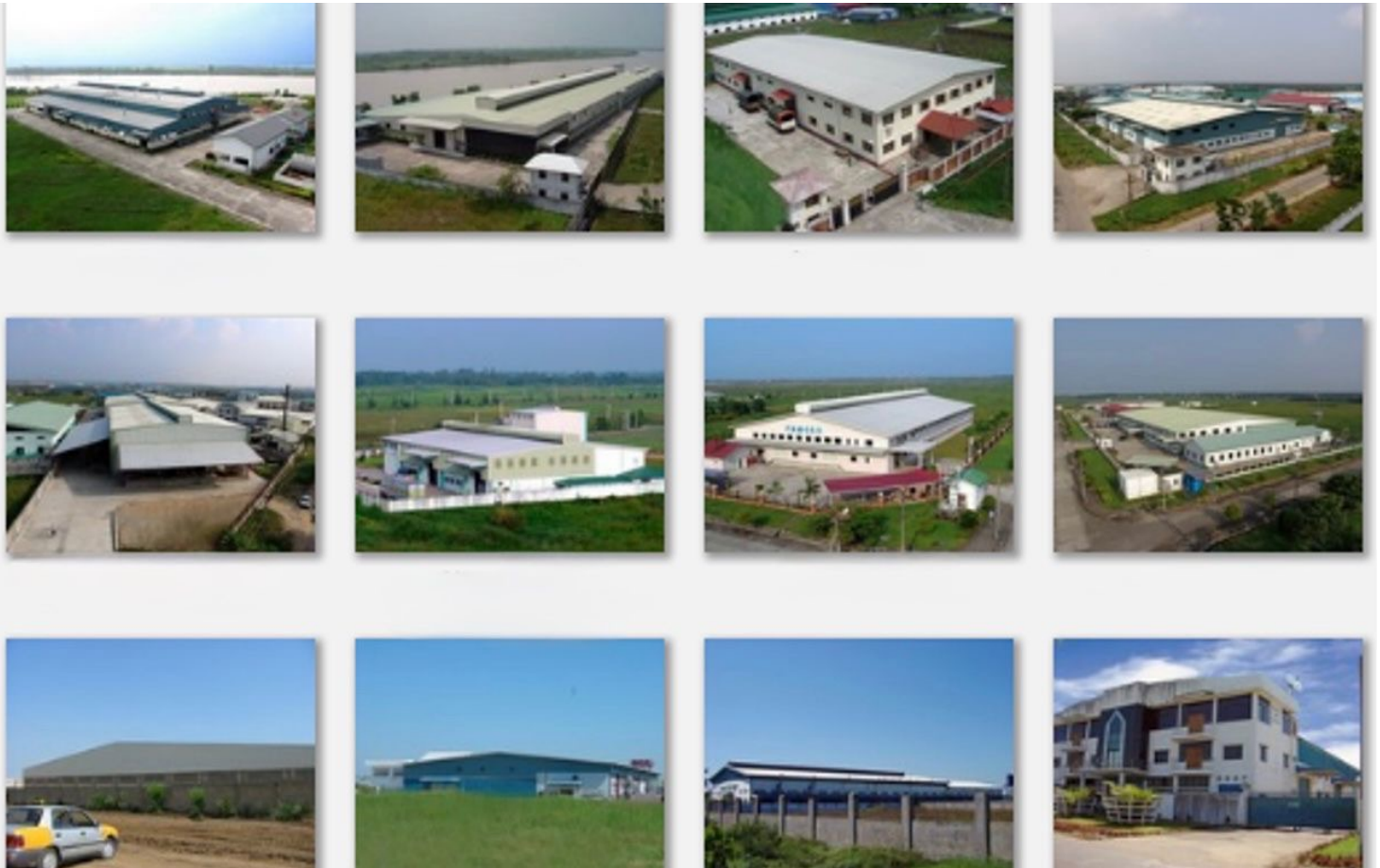
Honesty & Integrity  
Customer & Excellence  
Innovation & Change  
Leadership & Prudence  
Community & Prosperity

For those who demand quality at a reasonable price.



From excavation to occupancy, no other building system matches the pre-engineered building system in speed and value.

# Pre-Engineered Building (PEB) System:

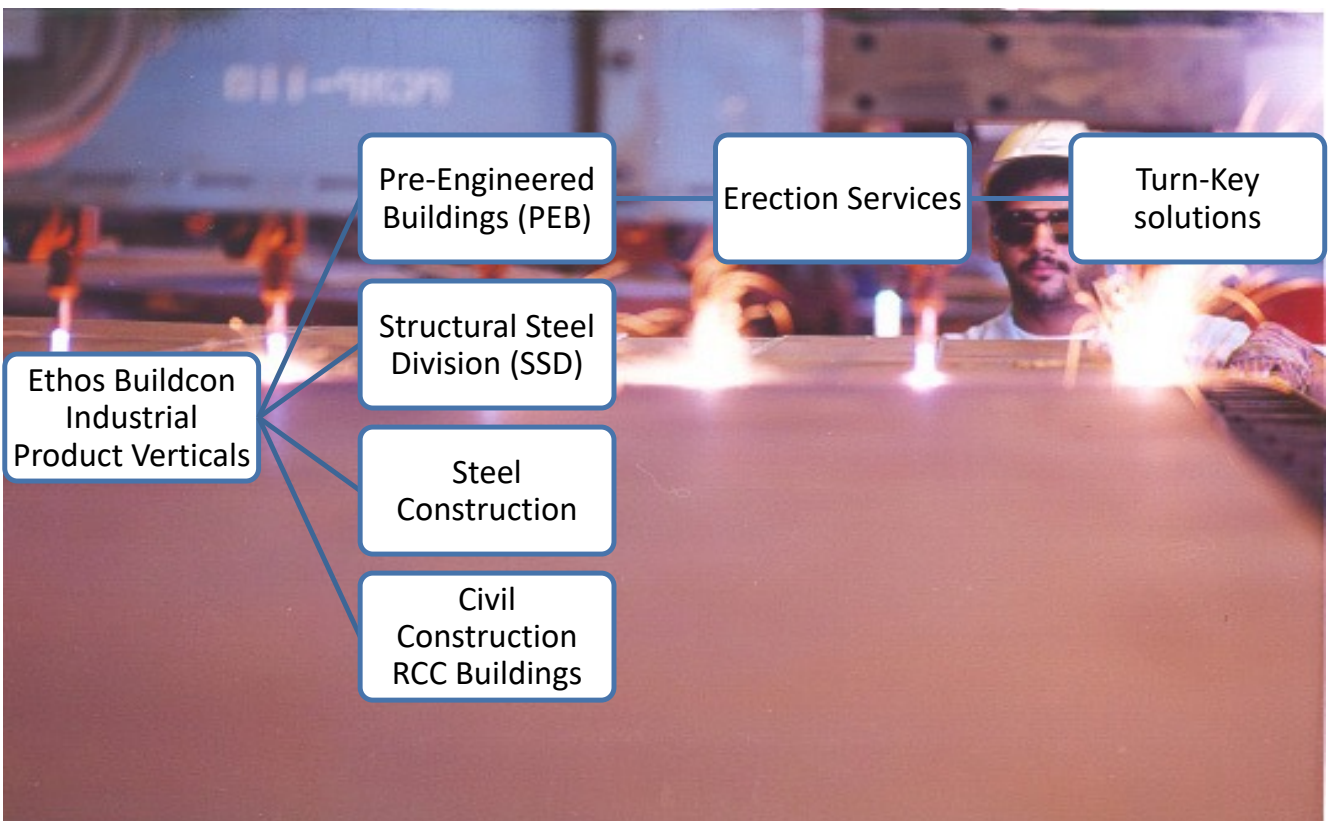


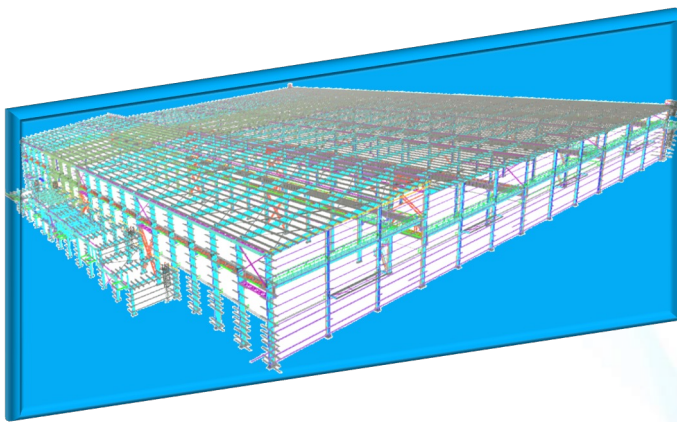
# ONE STOP SOLUTION FOR PEB & STRUCTURAL STEEL BUILDINGS

Our company specializes in the design, fabrication and supply of Pre-Engineered steel Buildings (PEB). Over the past 4 years, it has grown from a local single division company into a leader in the growing field of steel fabrication in India and Africa.

As an Industrial developer, Ethos Buildcon excels in engineering, fabrication, sales and project management and offers its clients a diverse range of products to compile a total building solution.

Ethos Buildcon aims to supply buildings for diverse Industrial, Commercial, Agriculture, Aviation, Entertainment, Military applications and support of infrastructure and development projects which makes us contribute to make in India Vision.





## Value Engineering

- Design
- Approval drawing
- Detail Engineering
- Manufacturing
- Supply of Steel Structure
- Transportation
- Transit Insurance
- Erection

## Project Execution

- A dedicated Construction Division headed by Manager
- Highly Experienced Project execution team to assure the final quality
- Erection and turn-key contracts.



# OUR MANUFACTURING FACILITY



- ◆ Our state-of-the-art manufacturing facility at Muzaffarnagar has a production capacity of about 24000 MT per annum.

- ◆ Total area of the land is about 200,000 sq ft, out of which, covered area is about 70,000 sq ft.



# OUR STRENGTHS

## MANAGEMENT

We have professional Management Team comprising of members with high qualification and rich hands-on experience of handling projects.

We have Ex-UPRNN GM and ex-Zamil in Key Positions like Managing Director and Sales Head, Manufacturing Head etc..



## COST OPTIMIZATION

We possess competitive edge because of our lean setup. We have in house designing team which can optimize the design of the building without compromising on the safety and design parameters.



## QUALITY COMPLIANCE

We ensure best quality with proper process control systems in place. We can perform welding tests like LPT, MPT, UT etc in our facility.

## WORKFORCE

Our Technical and Highly experienced workforce ensures quality and productivity which helps in optimizing the cost of the building.

# PLANT AND MACHINERY LIST

BUILT UP SECTION				
Sr No.	MACHINE NAME	QTY	MAKE	CAPACITY
1	PLASMA CUTTING	2	WELDARC	32 X 6000 MM
2	H-BEAM	1	PRIMO	200 X 1250 MM
3	SHEARING 6-MTR	1	PURVAJ	16 X 6000 MM
4	SHEARING 3-MTR	1	WELDOR	14 X 2000 MM
5	PUG MACHINE	8	ADOR	70 MM
6	MOGRA MACHINE	2	ADOR	600 AMP
7	ARC WELDING	8	NOOR	200 TO 600 AMP
8	AIR COMPRESSOR	3	ELGI	7KG/CM^2
9	EOT CRANE (5MT)	7	INFRATECH	5 TON
10	MIG MACHINE	15	ADOR & HUGONG	400 TO 630 AMP
11	GRINDER 4-INCH	10	BOSCH & DEWALT	800 W
12	GRINDER 7-INCH	15	BOSCH & DEWALT	1800 W
13	PENCIL GRINDER	4	BOSCH	800 W
14	BROUCH CUTTER	8	CAP,SUPER KBM	12 TO 85 MM
15	DRILL MACHINE (RADIAL)	1	MAANTECHNOPLUS	40 MM
16	GENERATOR 200-KVA	1	CUMMINS	200 KVA
17	GENERATOR 36-KVA	1	CUMMINS	36 KVA
18	HYDROLIC PUNCHING M/C	1	FERRO	12 X 20 MM
19	FORK CLIP	1	GODREJ	5 MT
20	HYDRA	3	ACE	12 MT
COLDFORM SECTION				
1	PURLIN MACHINE	1	HUAHENG TECH.	C-80 TO 300 MM, Z-120 TO 300 X 2.5 MM
2	SHEETING MACHINE	1	KEJO	PROFILE (32/251 & 32/221)
3	THREADING MACHINE	2	AMBE	12 TO 48 MM
4	CRIMPING MACHINE	2	FERRO	PROFILE (32/251 & 32/221)
5	POWERPRESS (150MT)	1		150 MT
6	BENDING MACHINE	2	FERRO	4 TO 10 MM
7	CHOPSA CUTTING	2	BOSCH	MAX 48 MM
PAINTING				
1	SAND BLASTING COMPRESSOR	1	DOSSAN	360 CFM
2	AIRLESS GUN	2	GARCO	10 KG/Cm
3	COMPRESSOR	1	SBI	1.5 KG/Cm

# MACHINERIES



Plasma Cutting Machine



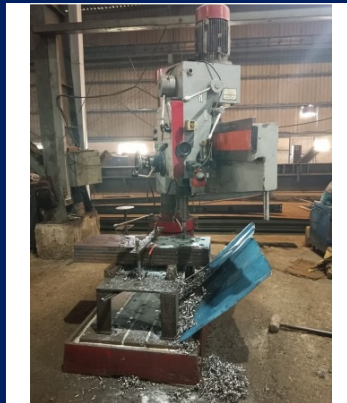
Shearing Machine 6mtr



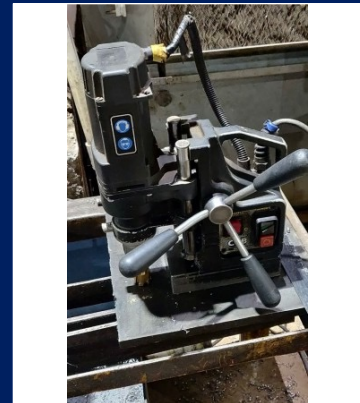
Shearing Machine 3mtr



Primo H-Beam Machine



Drill Machine (Radial)



Brouch Cutter Machine



Mig Welding Machine



Sand Blasting Compressor

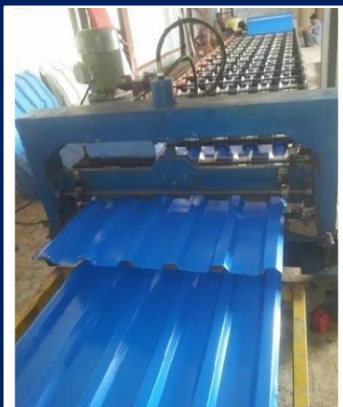


Hydra Crane Machine

# MACHINERIES



Purlin (C & Z) Machine



Roofing Sheets machine



Power Press



Airless Painting Machine

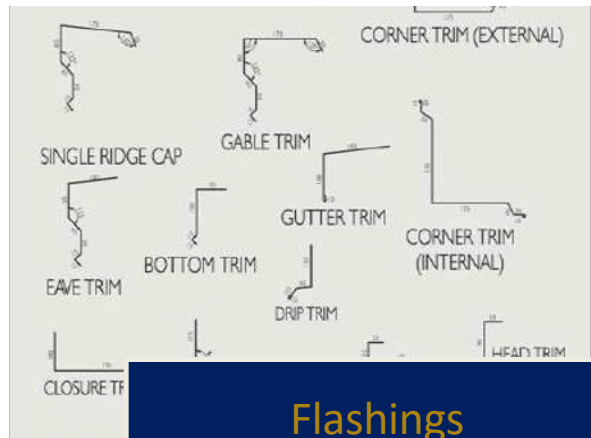


Threading Machine (12 to 48 mm)

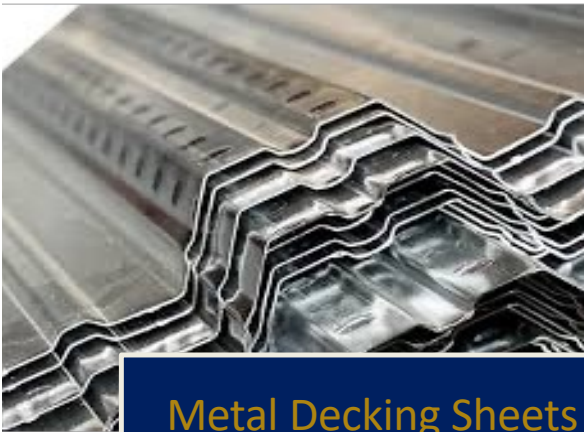
# BUILDINGS COMPONENT SOLUTIONS



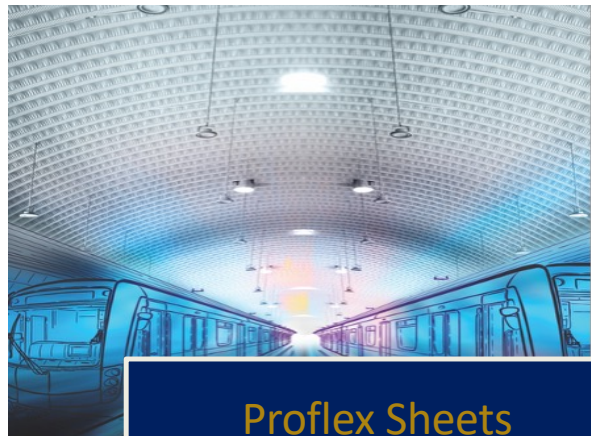
Single Skin Roof and Cladding Panels



Flashings



Metal Decking Sheets



Proflex Sheets



Polycarbonate Sheet

# BUILDINGS COMPONENT SOLUTIONS



Insulated Sandwich Panels  
(Polyisocyanurate (PIR) & Mineral  
Wool Insulation)



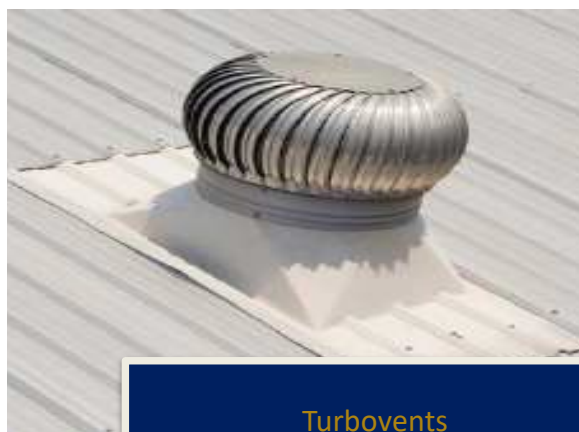
C and Z Purlins



Cold Formed Steel Sections



Louvers



Turbovents

# MATERIAL SPECIFICATIONS

Sr No.	Materials	Specifications	Minimum Strength	
1	Built-Up Members	ASTM A 572M Grade 345 (or) its Equivalent	$F_y = 34.5 \text{ kN/cm}^2$	
2	Hot-Rolled Members			
	Beams & Columns	IS 2062: 2006 Grade E250 Type A (or) its Equivalent	$F_y = 25.0 \text{ kN/cm}^2$	
	Tubes	IS 4923: 1997 Grade YSt.310	$F_y = 31.0 \text{ kN/cm}^2$	
	Channels	IS 2062: 2006 Grade E250 Type A (or) its Equivalent	$F_y = 25.0 \text{ kN/cm}^2$	
	Pipes	Handrails	IS 1161: 1998	$F_y = 24.0 \text{ kN/cm}^2$
3	Cold Formed Secondary Members			
	Galvanized Steel	ASTM A 653M SS Grade 480, Coating Z275	$F_y = 48.0 \text{ kN/cm}^2$	
4	Sheeting & Liner Panels			
	Zincalume Steel	ASTM A 792M SS Grade 340 Class 2, Coating AZM 150	$F_y = 34.0 \text{ kN/cm}^2$	
5	Valley Gutters **			
	Galvanized Steel	ASTM A 653M SS Grade 340, Coating Z275	$F_y = 34.0 \text{ kN/cm}^2$	
6	Mezzanine Deck Panels			
	Galvanized Steel	ASTM A 653M SS Grade 340, Coating Z180	$F_y = 34.0 \text{ kN/cm}^2$	
7	X-Bracing Members			
	Rods	IS 2062: 2006 Grade E250 Type A (or) its Equivalent	$F_u = 41.0 \text{ kN/cm}^2$	
	Angles	IS 2062: 2006 Grade E250 Type A (or) its Equivalent	$F_u = 41.0 \text{ kN/cm}^2$	
8	Anchor Bolts	ASTM A 36M (or) IS 2062: 2006 Grade E250 Type A (or) its Equivalent (Black / Unpainted Bolts)	$F_y = 25.0 \text{ kN/cm}^2$ $F_u = 40.0 \text{ kN/cm}^2$	
9	High Strength Bolts	ASTM A 325M Type 1, Hot Dip Galvanized to ASTM A 153M Class C	$F_u = 83.0 \text{ kN/cm}^2$	
10	Machine Bolts	DIN 933 Class 4.6 / 4.8 Electro Plated Yellow Chromate	$F_u = 40.0 \text{ kN/cm}^2$	

---

# PRODUCT APPLICATION

**Diversity in Application Suitable for all Major Sectors**

## INDUSTRIAL

- ✓ Factories
- ✓ Workshops
- ✓ Warehouses
- ✓ Logistics Parks
- ✓ Cold Stores
- ✓ Car Parking Shades
- ✓ Slaughter Houses
- ✓ Bulk Product Storage

## COMMERCIAL

- ✓ Shopping Malls
- ✓ Showrooms
- ✓ Distribution Centers
- ✓ Hypermarkets
- ✓ Fast Food Restaurants
- ✓ Offices
- ✓ Labor Camps
- ✓ Service Stations
- ✓ Shopping Centers

## AGRICULTURE

- ✓ Dairy Farms
- ✓ Poultry Buildings
- ✓ Grain Storage
- ✓ Animal Confinement
- ✓ Greenhouses

## AVIATION AND MILITARY

- ✓ Aircraft Hangars
- ✓ Administration Buildings
- ✓ Residential Barracks
- ✓ Support Facilities

## RECREATIONAL

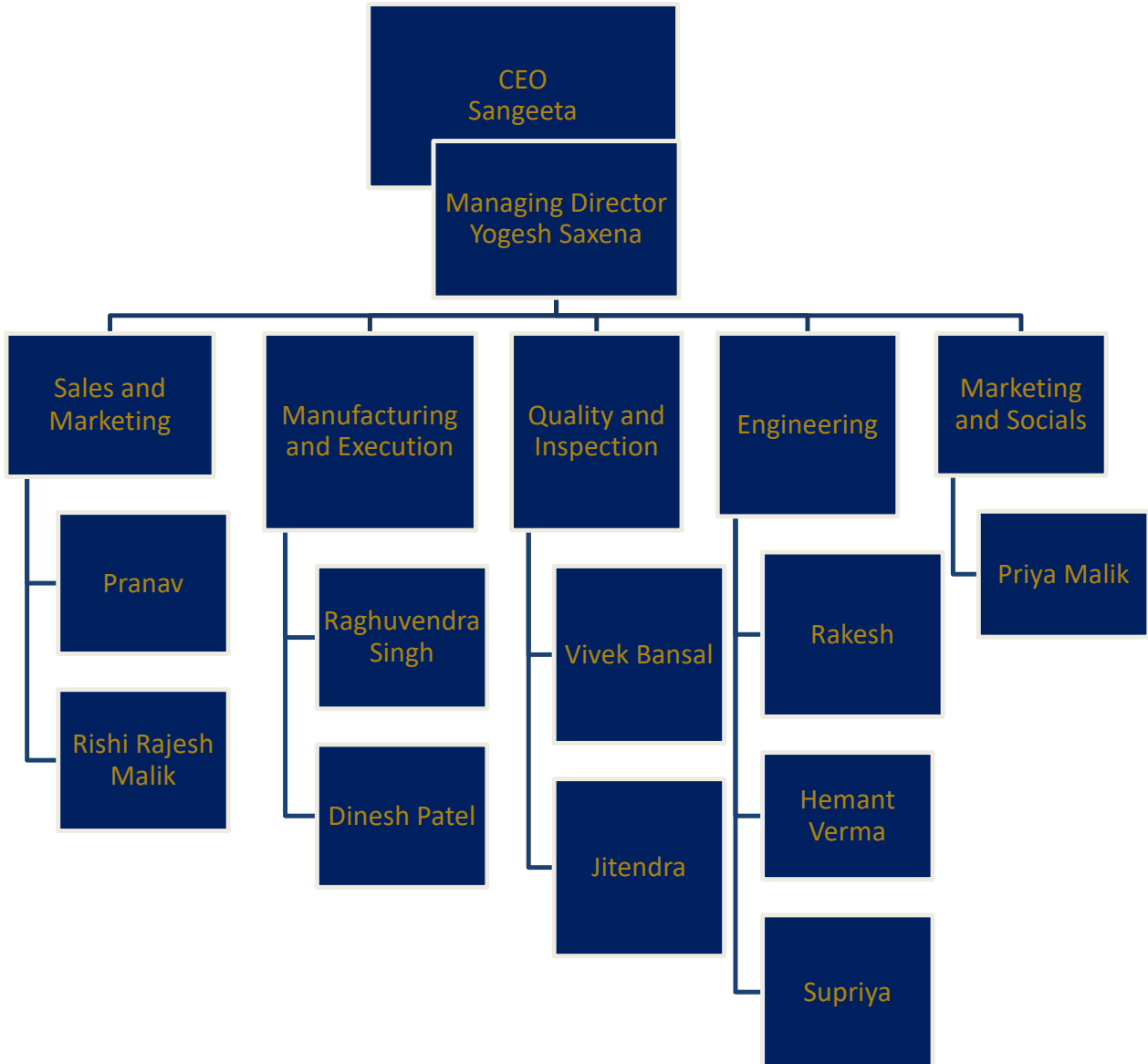
- ✓ Swimming Pool Enclosures
- ✓ Indoor Tennis Courts
- ✓ Gymnasiums

## INDUSTRIAL

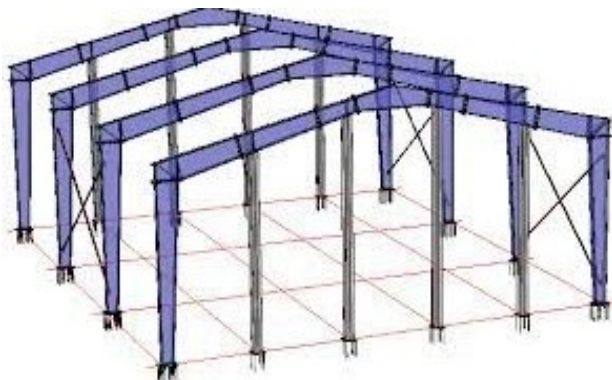
- ✓ Schools
- ✓ Hospitals
- ✓ Exhibition Halls
- ✓ Sports Halls
- ✓ Theaters / Auditoriums

---

# ORGANISATION CHART



# GALLERY



# GALLERY



---

Email : [sales@ethosbuildcon.com](mailto:sales@ethosbuildcon.com)

---

Website : [www.ethosbuildcon.com](http://www.ethosbuildcon.com)

---

GSTIN : 09BNFPS7486D1ZG

---

Contact Number : +91 9211264228

---

Registered Office : Greater Noida (U.P) 201306

---

Manufacturing Unit : NH-58 By-pass, Muzaffarnagar (U.P) 251001

---



**DIGGING  
EXCELLENCE**