

# Floor Plans



## Embark on a Journey of New Discoveries and Endless Memories



Designed for a contemporary lifestyle, Hillhaven offers a vibrant blend of private, spacious living with thoughtfully curated amenities.

Whether you're creating new memories over conversations with neighbours and friends, or having a relaxing stroll at dusk with your family, Hillhaven is a place to unwind while enjoying everything life has to offer.

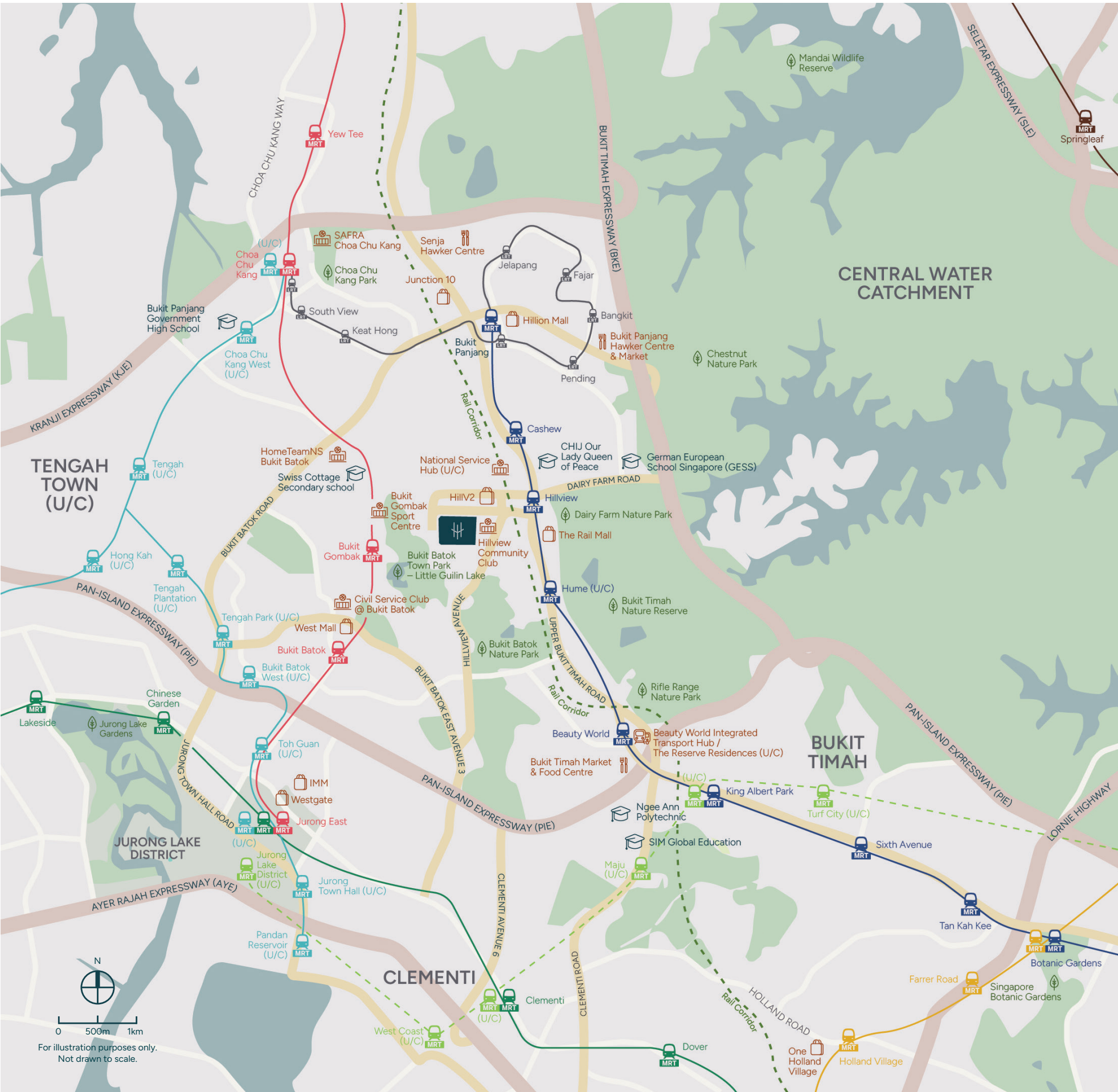


# Enjoy Modern Comfort while Staying Accessible

At Hillhaven, you are surrounded by a variety of malls, recreational spaces, and parks, with plenty to enjoy. Well-connected by road and public transport, with 2 Integrated Transport Hubs – at Beauty World and Bukit Panjang within the vicinity, Hillhaven provides quick and convenient access to a growing network of businesses and several well-reputed educational institutes.

Nature	24km Rail Corridor	2 mins cycle / 4 mins walk
	Bukit Batok Nature Park	5 mins cycle / 4 mins drive
	Bukit Timah Nature Reserve	12 mins cycle / 6 mins drive
	Singapore Botanic Gardens	27 mins cycle / 15 mins drive
Education	Schools within 1km radius	within 1km radius
	CHIJ Our Lady Queen of Peace	
	Other reputable schools nearby	
	Brighton Montessori @ Hillview	1 min walk
	St Francis Methodist School	6 mins walk
	Swiss Cottage Secondary School	6 mins drive
	Ngee Ann Polytechnic	8 mins drive
	SIM Global Education	8 mins drive
	Bukit Panjang Government High School	10 mins drive
	National University of Singapore	14 mins drive
Shop & Dine	HillV2	1 min walk
	The Rail Mall	10 mins walk
	Hillion Mall	6 mins drive
	Bukit Panjang Hawker Centre and Market	6 mins drive
	Bukit Timah Market & Food Centre	7 mins drive
	IMM	8 mins drive
	One Holland Village	15 mins drive
Leisure	Hillview Community Club	1 min walk
	National Service (NS) Hub (U/C)	2 mins drive
	Bukit Gombak Sports & Recreation Centre	5 mins drive
	Civil Service Club @ Bukit Batok	5 mins drive
	HomeTeamNS Bukit Batok	7 mins drive
	SAFRA Choa Chu Kang	8 mins drive
Transport	Hillview MRT Station	4 mins walk
	Bukit Batok MRT Station	5 mins drive
	Bukit Panjang Integrated Transport Hub	2 MRT stops
	Beauty World Integrated Transport Hub / The Reserve Residences (U/C)	2 MRT stops

All travelling time is approximate only and is taken from Hillhaven to the respective destinations.







# Thoughtfully Curated Amenities to Elevate Contemporary Lifestyle Needs

## Level 01

- 01 Main Entrance
- 02 Arrival Court
- 03 Tropical Palm Garden
- 04 Garden Pavilion
- 05 Exercise Lawn
- 06 Lobby Garden
- 07 Urban Farm
- 08 Ginger Garden
- 09 Garden Walk
- 10 Garden Alcove
- 11 Bikers' Corner
- 12 Bicycle Parking
- 13 Central Lawn
- 14 Side Entrance

- A Guard House - Level 01
- B Refuse Chamber - Level 01
- C MDF Room - Level 01
- D Bin Centre - Level 01
- E Substation - Level 01
- F Generator Set - Level 01
- G Water Tanks - MSCP Lower 01 (Dotted Lines)
- Water Tanks - Tower Blocks Roof (Dotted Lines)



0 05 10 15 20M

## Level 04

- 15 BBQ Pavilion 1
- 16 BBQ Pavilion 2
- 17 50m Pool
- 18 Outdoor Fitness
- 19 Pool Deck
- 20 Gym
- 21 Rock Climbing
- 22 Kids Pool
- 23 Children Playground
- 24 Pickleball Court
- 25 Changing & Steam Room
- 26 Function Room
- 27 Spa Tub
- 28 Spa Alcove
- 29 Lounge Deck
- 30 Floating Deck
- 31 AI Fresco Deck
- 32 Water Deck
- 33 Party Pavilion
- 34 Reading Corner

## UNIT PLAN

- 2-Bedroom
- 2-Bedroom + Study
- 3-Bedroom
- 3-Bedroom + Study
- 4-Bedroom



# Schematic Diagram

2-Bedroom

2-Bedroom + Study

3-Bedroom

3-Bedroom + Study

4-Bedroom

LEGEND

(P)

PES Units

(D)

Double Volume  
Only for living and dining areas

#

Visual Screens

	5 Hillview Rise			5 Hillview Rise			
Unit/Level	O3	O2	O1	O4	O5	O6	O7
27	D1B(D)	B2A	C3(D)	B4B#	B1A#	B1B#	B4C#
26	D1B	B2A	C3	B4B#	B1A#	B1B#	B4C#
25	D1B	B2A	C3	B4B#	B1A#	B1B#	B4C#
24	D1B	B2A	C3	B4B#	B1A#	B1B#	B4C#
23	D1B	B2A	C3	B4B#	B1A#	B1B#	B4C#
22	D1B	B2A	C3	B4B#	B1A#	B1B#	B4C#
21	D1B	B2A	C3	B4B#	B1A#	B1B#	B4C#
20	D1B	B2A	C3	B4B#	B1A#	B1B#	B4C#
19	D1B	B2A	C3	B4B#	B1A#	B1B#	B4C#
18	D1B	B2A	C3	B4B#	B1A#	B1B#	B4C#
17	D1B	B2A	C3	B4B#	B1A#	B1B#	B4C#
16	D1B	B2A	C3	B4B#	B1A#	B1B#	B4C#
15	D1B	B2A	C3	B4B#	B1A#	B1B#	B4C#
14	D1B	B2A	C3	B4B#	B1A#	B1B#	B4C#
13	D1B	B2A	C3	B4B#	B1A#	B1B#	B4C#
12	D1A	B2A	C3	B4A	B1A	B1B	B4C
11	D1A	B2A	C3	B4A	B1A	B1B	B4C
10	D1A	B2A	C3	B4A	B1A	B1B	B4C
9	D1A	B2A	C3	B4A	B1A	B1B	B4C
8	D1A	B2A	C3	B4A	B1A	B1B	B4C
7	D1A	B2A	C3	B4A	B1A	B1B	B4C
6	D1A	B2A	C3	B4A	B1A	B1B	B4C
5	D1A	B2A	C3	B4A	B1A	B1B	
4	D1A	B2A	C3	B4A	B1A	B1B	
3	D1A	B2A	C3	B4A	B1A	B1B	
2	D1A	B2A	C3	B4A	B1A	B1B	
1		B2A(P)	C3(P)				

Unit/Level	7 Hillview Rise			7 Hillview Rise		
	11	12	13	10	09	08
28	C2(D)#	B3#	C1(D)#	C4(D)	B2B	D2(D)
27	C2#	B3#	C1#	C4	B2B	D2
26	C2#	B3#	C1#	C4	B2B	D2
25	C2#	B3#	C1#	C4	B2B	D2
24	C2#	B3#	C1#	C4	B2B	D2
23	C2#	B3#	C1#	C4	B2B	D2
22	C2#	B3#	C1#	C4	B2B	D2
21	C2#	B3#	C1#	C4	B2B	D2
20	C2#	B3#	C1#	C4	B2B	D2
19	C2#	B3#	C1#	C4	B2B	D2
18	C2#	B3#	C1#	C4	B2B	D2
17	C2#	B3#	C1#	C4	B2B	D2
16	C2#	B3#	C1#	C4	B2B	D2
15	C2#	B3#	C1#	C4	B2B	D2
14	C2#	B3#	C1#	C4	B2B	D2
13	C2#	B3#	C1#	C4	B2B	D2
12	C2	B3	C1	C4	B2B	D2
11	C2	B3	C1	C4	B2B	D2
10	C2	B3	C1	C4	B2B	D2
9	C2	B3	C1	C4	B2B	D2
8	C2	B3	C1	C4	B2B	D2
7	C2	B3	C1	C4	B2B	D2
6	C2	B3	C1	C4	B2B	D2
5		B3	C1	C4	B2B	D2
4		B3	C1	C4	B2B	D2
3		B3	C1	C4	B2B	D2
2		B3	C1	C4	B2B	D2
1				C4(P)	B2B(P)	D2(P)



# 2-Bedroom

## Type B1A

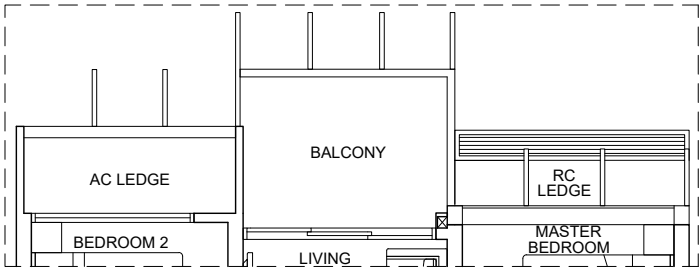
63 sqm / 678 sqft

Units (Without Visual Screenings)

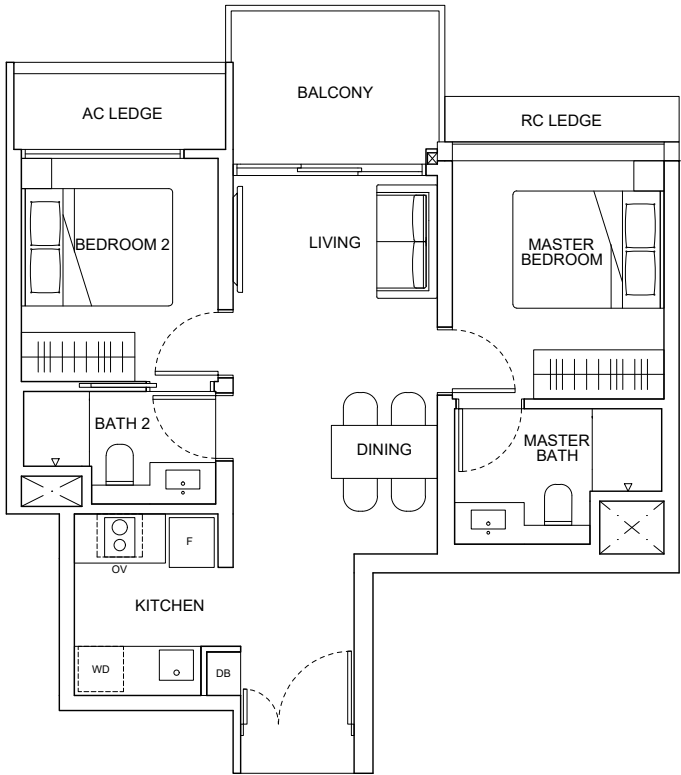
#02-05 to #12-05

Units (With Visual Screenings)

#13-05 to #27-05



Installed visual screenings for units at 13th sty and above



### LEGEND

- DB Distribution Box
- F Fridge
- OV Oven
- WD Washer-Dryer

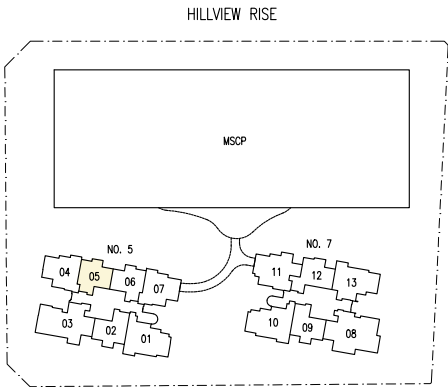


Disclaimer: The above plan is subject to any amendments as may be approved by the relevant authorities.



### KEY PLAN

This key plan is not to scale



# 2-Bedroom

## Type B1B

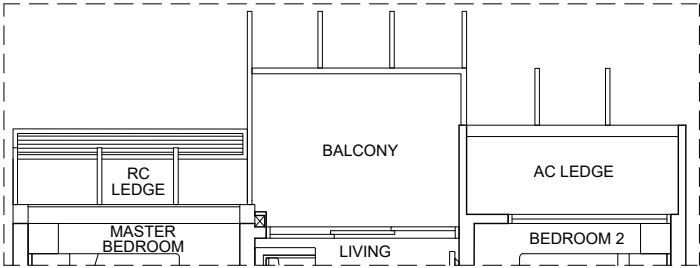
63 sqm / 678 sqft

Units (Without Visual Screenings)

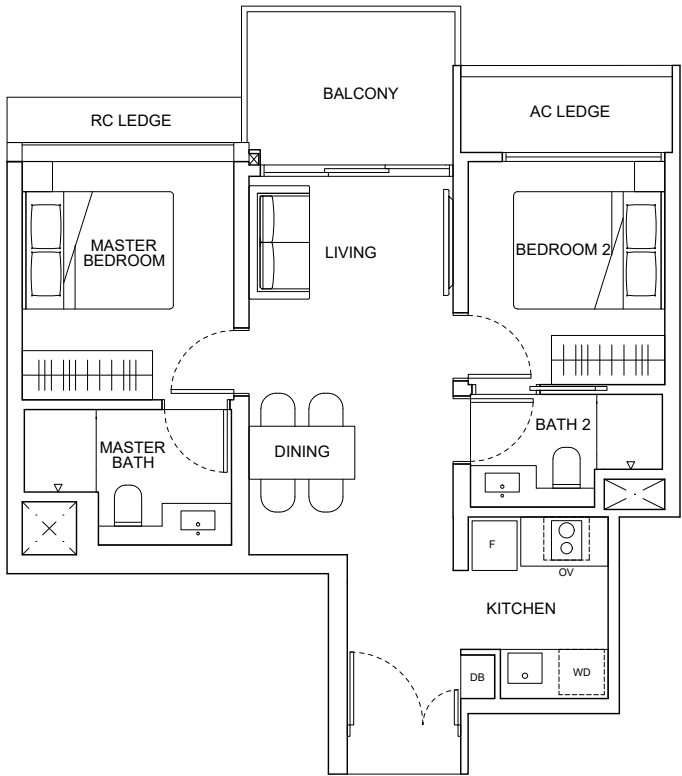
#02-06 to #12-06

Units (With Visual Screenings)

#13-06 to #27-06

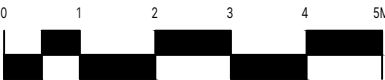


Installed visual screenings for units at 13th sty and above



### LEGEND

- DB Distribution Box
- F Fridge
- OV Oven
- WD Washer-Dryer

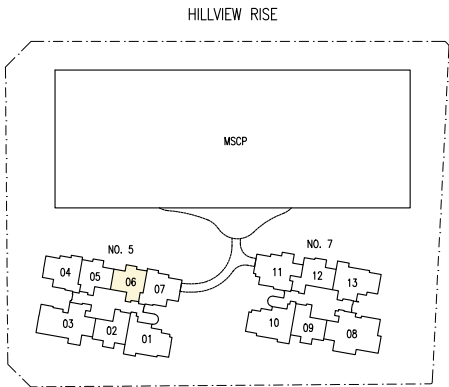


Disclaimer: The above plan is subject to any amendments as may be approved by the relevant authorities.



### KEY PLAN

This key plan is not to scale





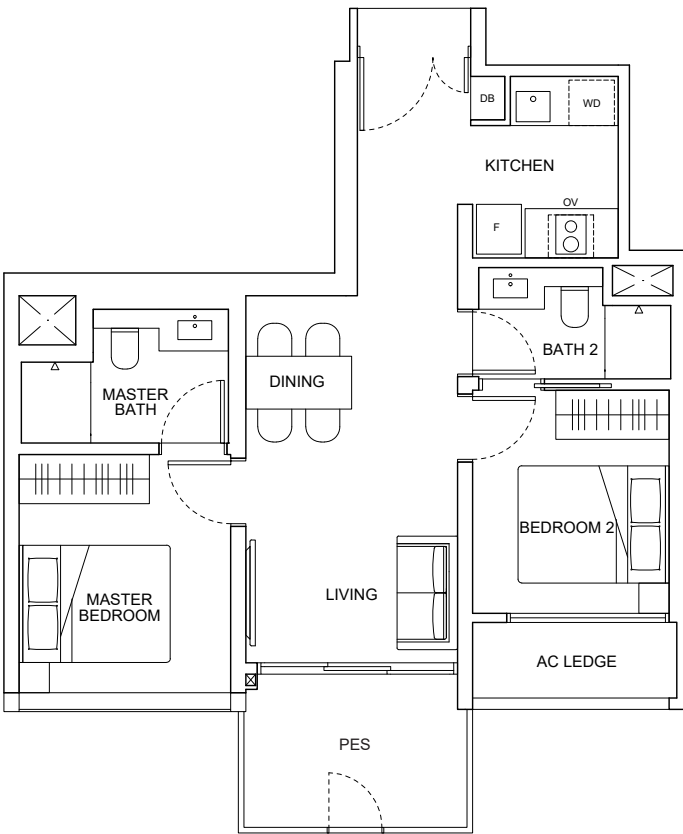
# 2-Bedroom

Type B2A(P)

65 sqm / 700 sqft

Units

#01-02



## LEGEND

- DB Distribution Box
- F Fridge
- OV Oven
- WD Washer-Dryer

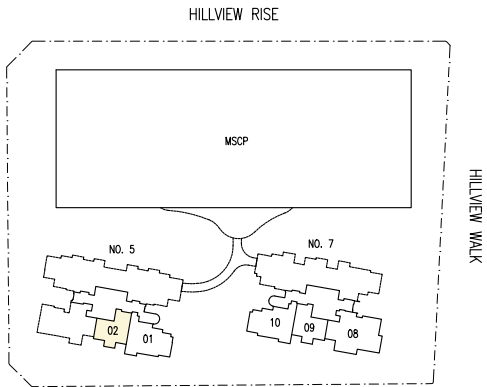


Disclaimer: The above plan is subject to any amendments as may be approved by the relevant authorities.



## KEY PLAN

This key plan is not to scale



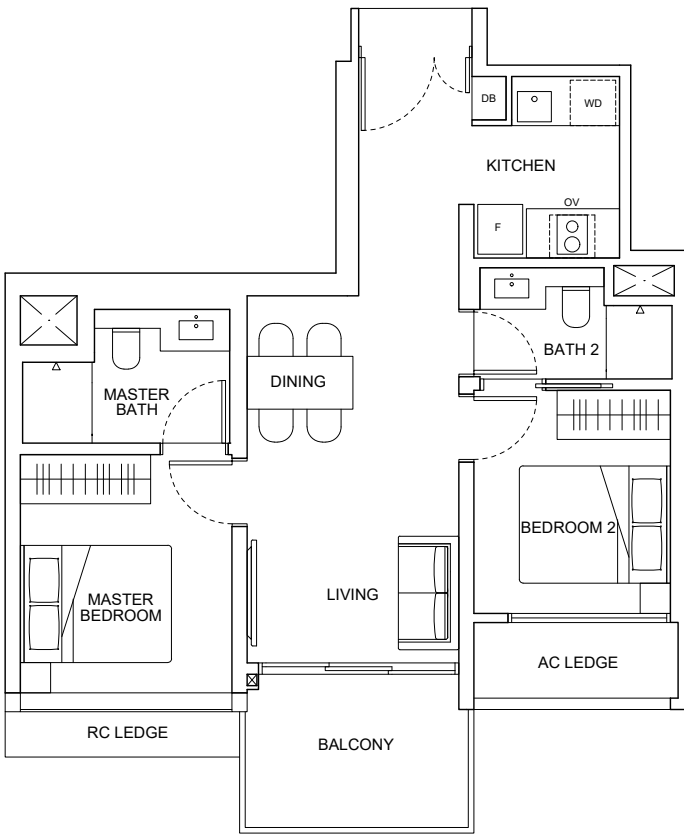
# 2-Bedroom

Type B2A

65 sqm / 700 sqft

Units

#02-02 to #27-02



## LEGEND

- DB Distribution Box
- F Fridge
- OV Oven
- WD Washer-Dryer

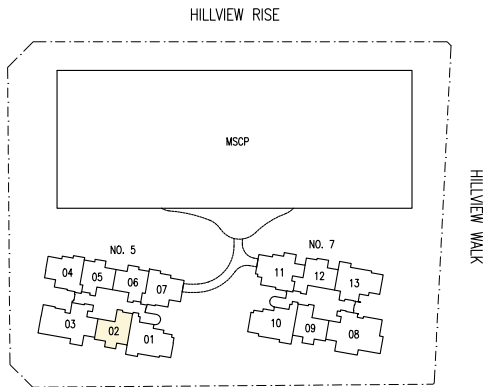


Disclaimer: The above plan is subject to any amendments as may be approved by the relevant authorities.



## KEY PLAN

This key plan is not to scale



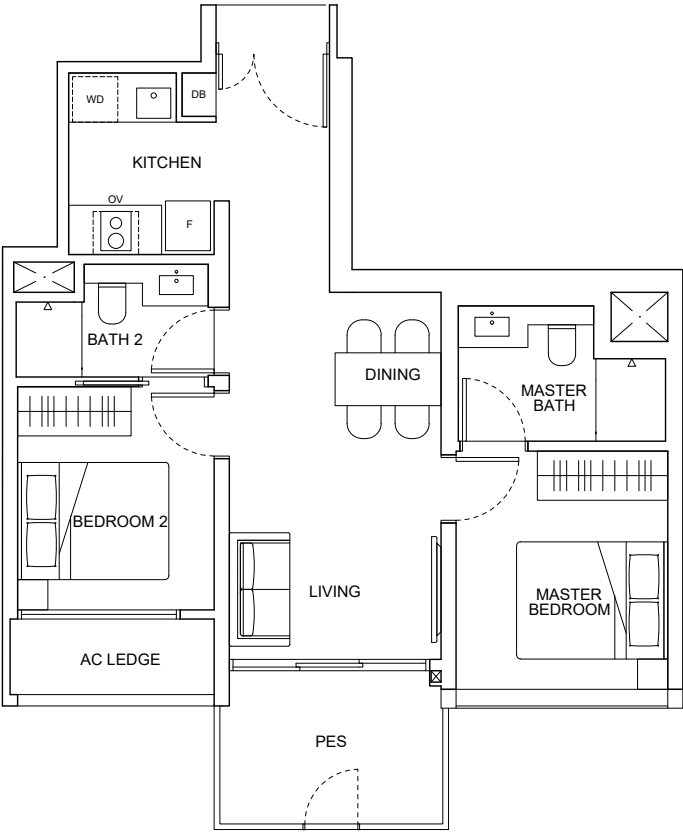


# 2-Bedroom

Type B2B(P)  
65 sqm / 700 sqft

Units

#01-09



LEGEND

- DB Distribution Box
- F Fridge
- OV Oven
- WD Washer-Dryer

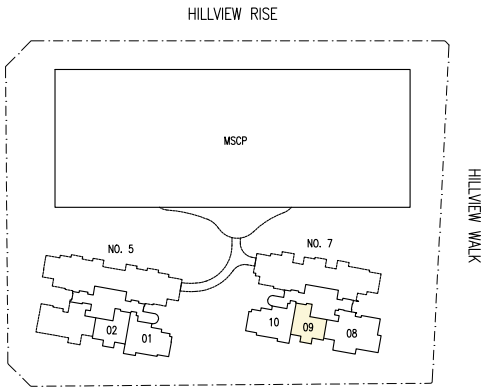


Disclaimer: The above plan is subject to any amendments as may be approved by the relevant authorities.



KEY PLAN

This key plan is not to scale

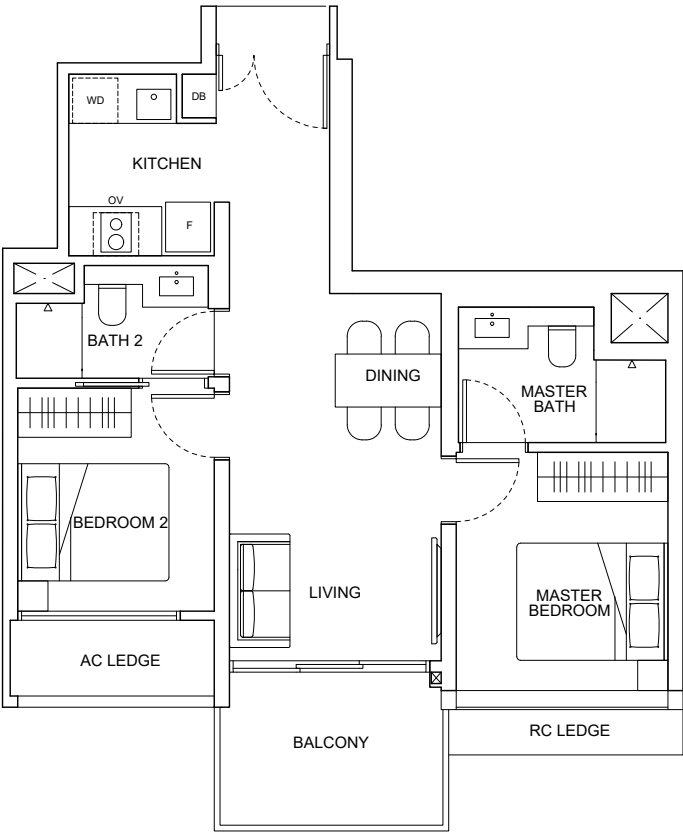


# 2-Bedroom

Type B2B  
65 sqm / 700 sqft

Units

#02-09 to #28-09



LEGEND

- DB Distribution Box
- F Fridge
- OV Oven
- WD Washer-Dryer

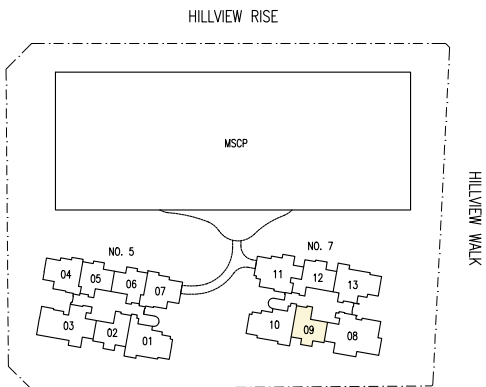


Disclaimer: The above plan is subject to any amendments as may be approved by the relevant authorities.



KEY PLAN

This key plan is not to scale





# 2-Bedroom

## Type B3

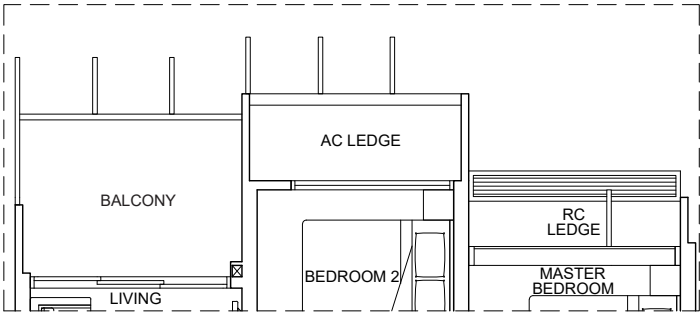
67 sqm / 721 sqft

Units (Without Visual Screenings)

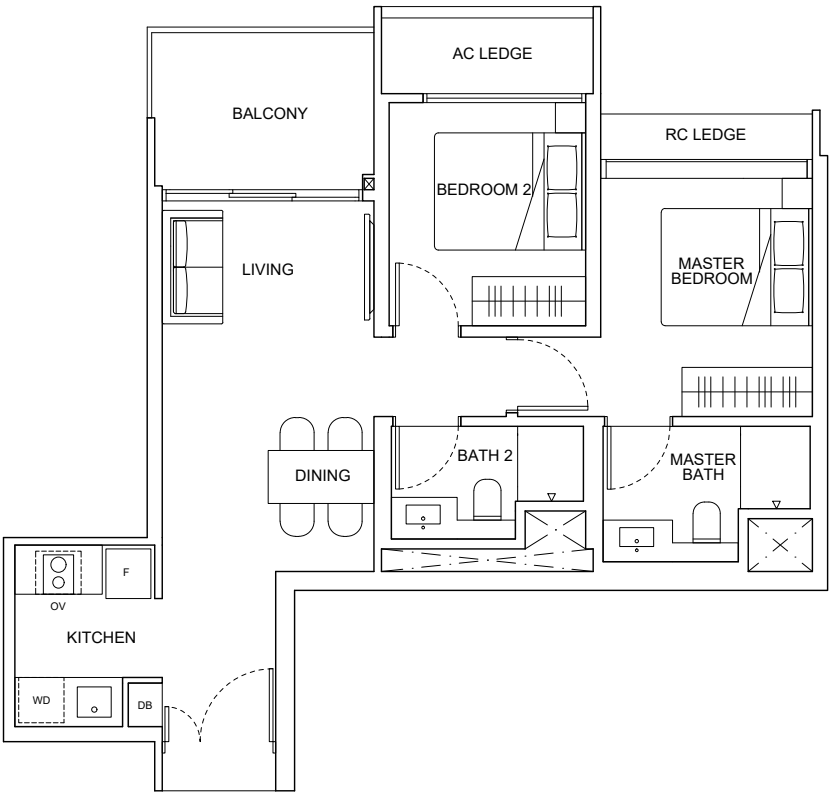
#02-12 to #12-12

Units (With Visual Screenings)

#13-12 to #28-12



Installed visual screenings for units at 13th sty and above



### LEGEND

- DB Distribution Box
- F Fridge
- OV Oven
- WD Washer-Dryer

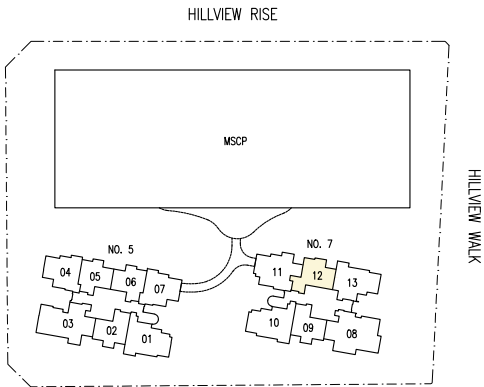


Disclaimer: The above plan is subject to any amendments as may be approved by the relevant authorities.



### KEY PLAN

This key plan is not to scale



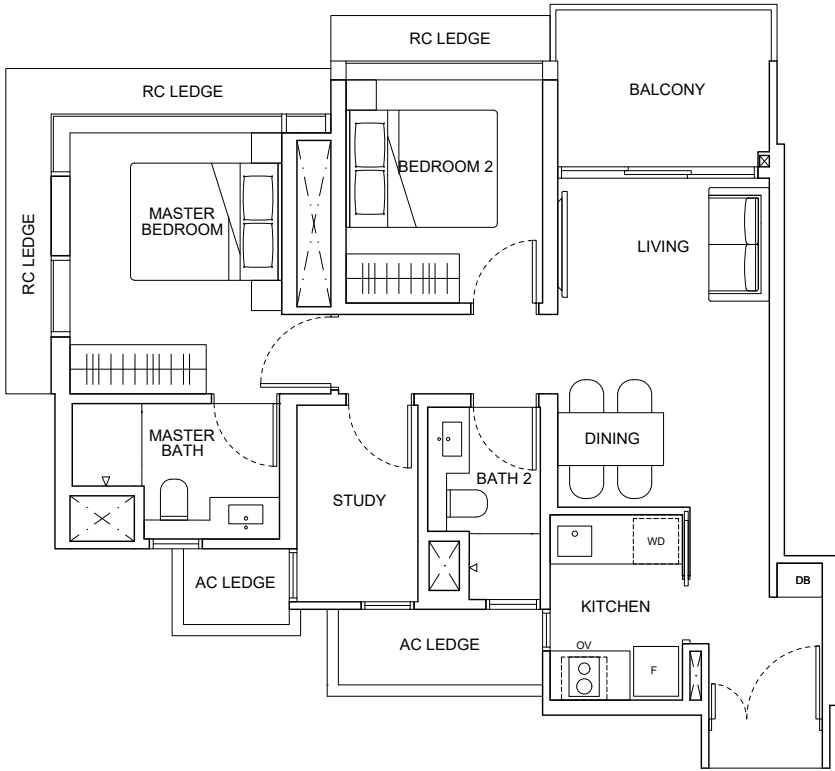
# 2-Bedroom + Study

## Type B4A

74 sqm / 797 sqft

Units

#02-04 to #12-04



### LEGEND

- DB Distribution Box
- F Fridge
- OV Oven
- WD Washer-Dryer

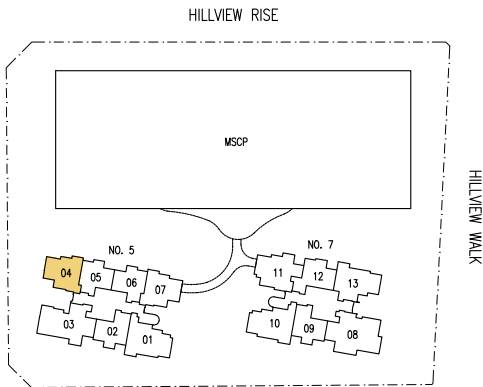


Disclaimer: The above plan is subject to any amendments as may be approved by the relevant authorities.



### KEY PLAN

This key plan is not to scale





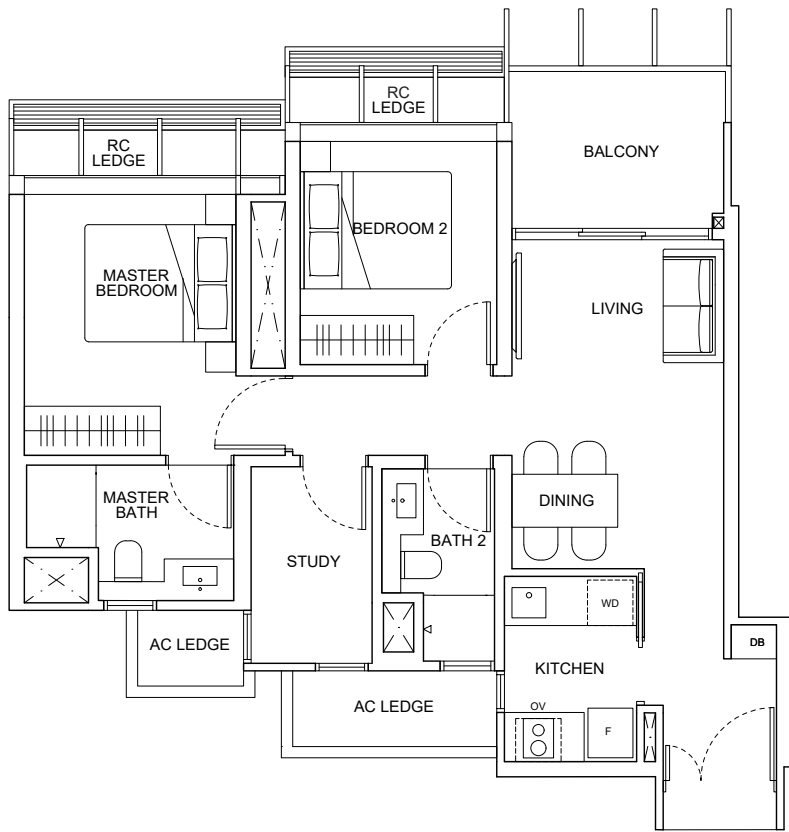
# 2-Bedroom + Study

## Type B4B

74 sqm / 797 sqft

Units (With Visual Screenings)

#13-04 to #27-04



### LEGEND

- DB Distribution Box
- F Fridge
- OV Oven
- WD Washer-Dryer

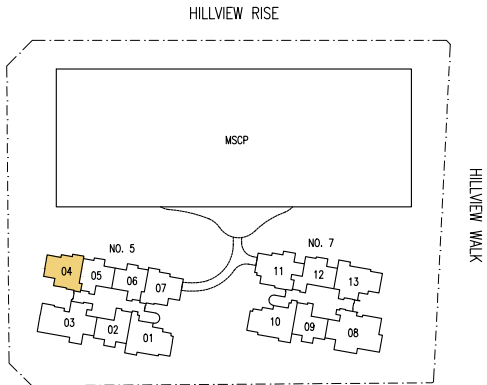


Disclaimer: The above plan is subject to any amendments as may be approved by the relevant authorities.



### KEY PLAN

This key plan is not to scale



# 2-Bedroom + Study

## Type B4C

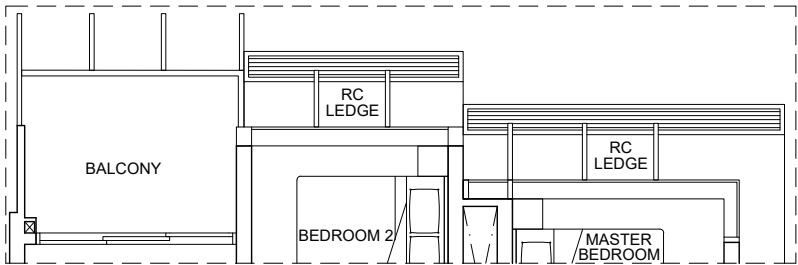
74 sqm / 797 sqft

Units (Without Visual Screenings)

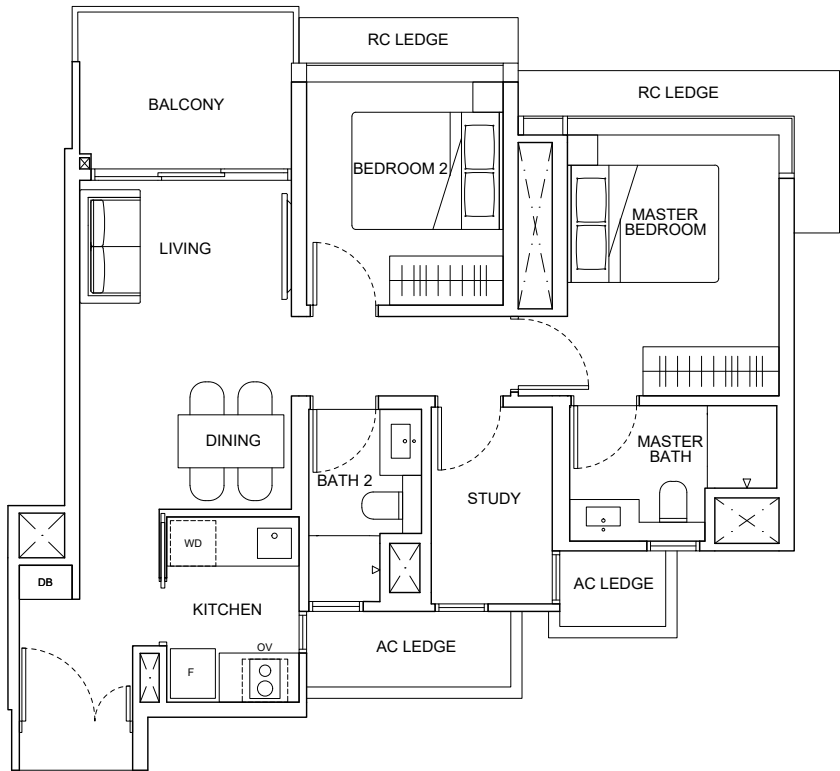
#06-07 to #12-07

Units (With Visual Screenings)

#13-07 to #27-07



Installed visual screenings for units at 13th sty and above



### LEGEND

- DB Distribution Box
- F Fridge
- OV Oven
- WD Washer-Dryer

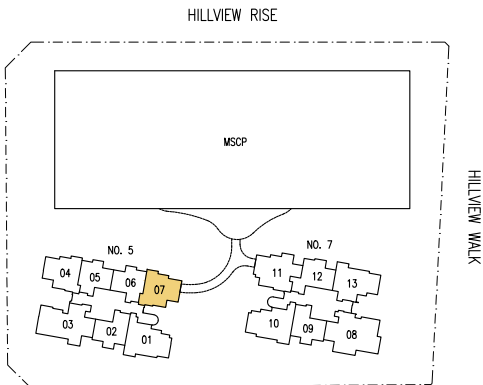


Disclaimer: The above plan is subject to any amendments as may be approved by the relevant authorities.



### KEY PLAN

This key plan is not to scale





# 3-Bedroom

## Type C1

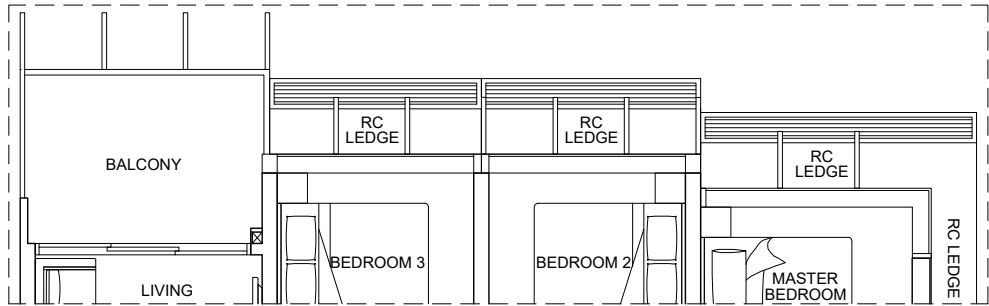
88 sqm / 947 sqft

Units (Without Visual Screenings)

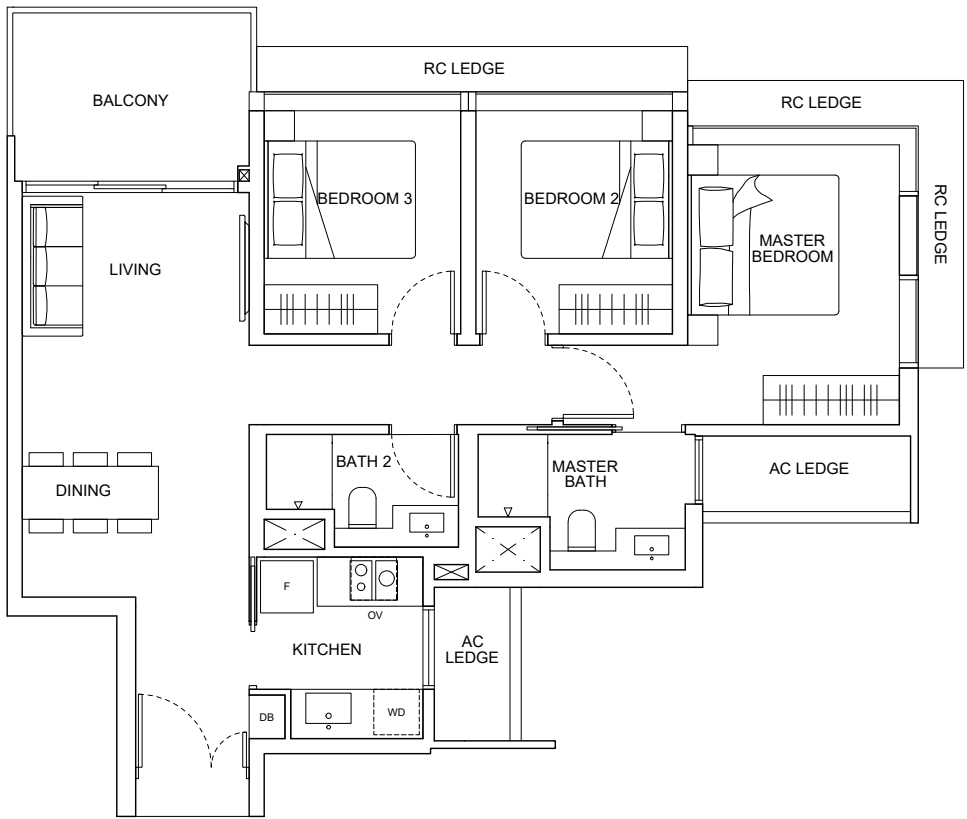
#02-13 to #12-13

Units (With Visual Screenings)

#13-13 to #27-13



Installed visual screenings for units at 13th sty and above



### LEGEND

- DB Distribution Box
- F Fridge
- OV Oven
- WD Washer-Dryer

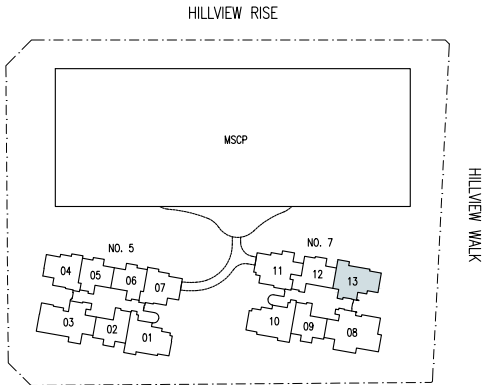


Disclaimer: The above plan is subject to any amendments as may be approved by the relevant authorities.



### KEY PLAN

This key plan is not to scale



# 3-Bedroom

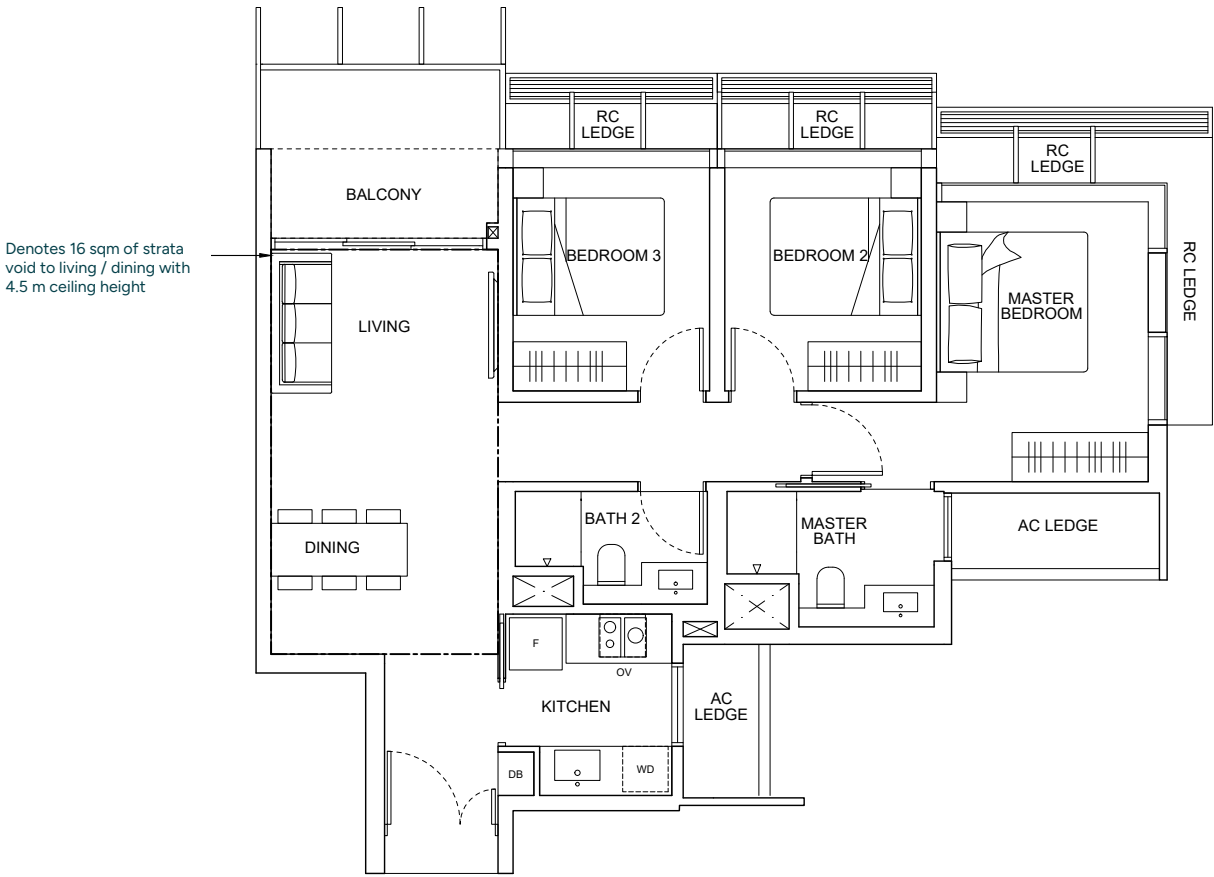
## Type C1(D)

106 sqm / 1,141 sqft

Includes 16 sqm of strata void to living / dining with 4.5 m ceiling height

Units (With Visual Screenings)

#28-13



Denotes 16 sqm of strata void to living / dining with 4.5 m ceiling height

### LEGEND

- DB Distribution Box
- F Fridge
- OV Oven
- WD Washer-Dryer

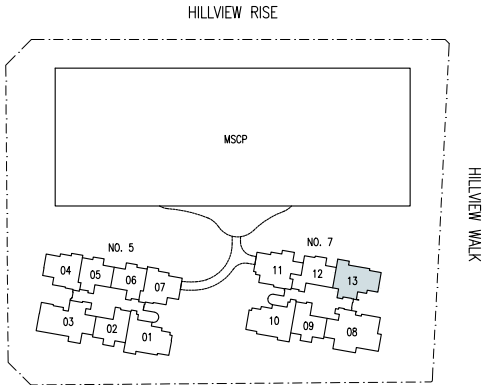


Disclaimer: The above plan is subject to any amendments as may be approved by the relevant authorities.



### KEY PLAN

This key plan is not to scale

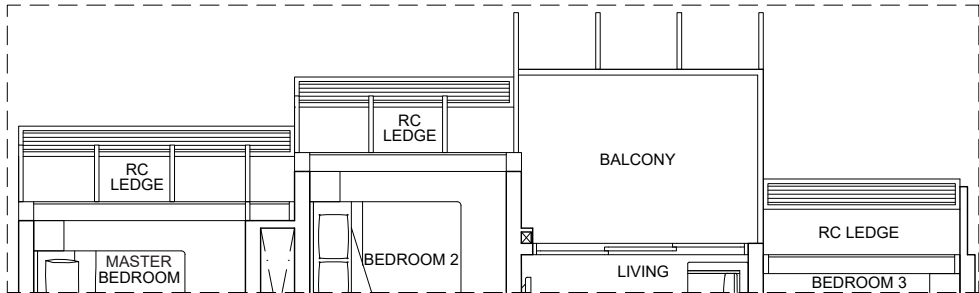


# 3-Bedroom + Study

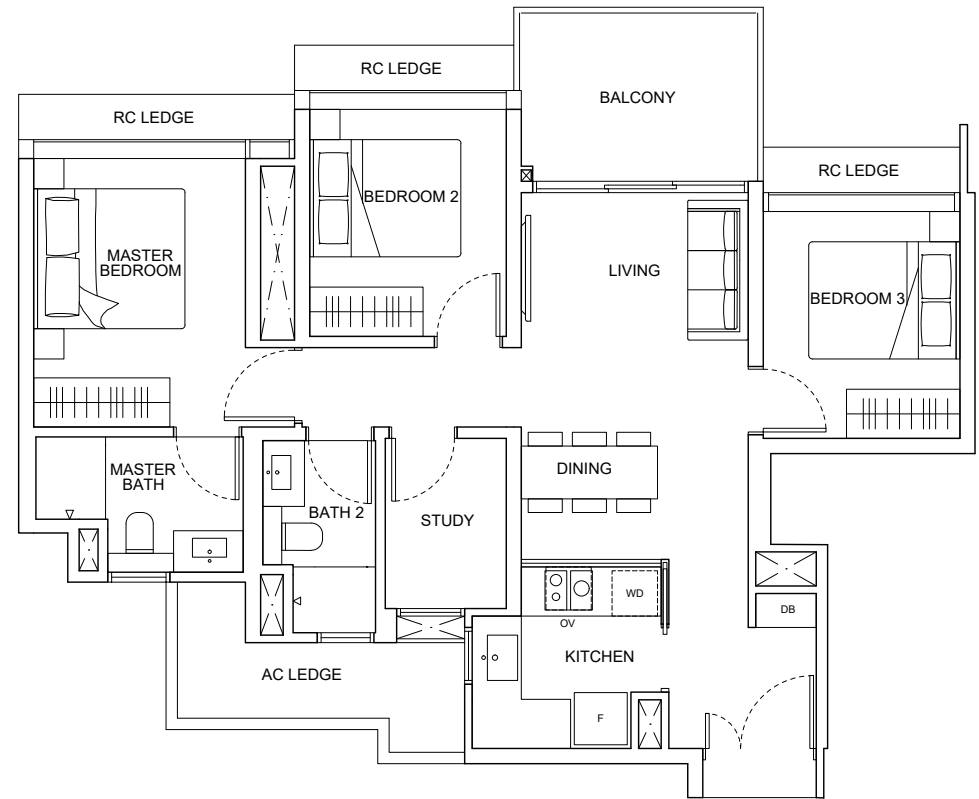
Type C2  
89 sqm / 958 sqft

Units (Without Visual Screenings)  
#06-11 to #12-11

Units (With Visual Screenings)  
#13-11 to #27-11



Installed visual screenings for units at 13th story and above



LEGEND

- DB Distribution Box
- F Fridge
- OV Oven
- WD Washer-Dryer

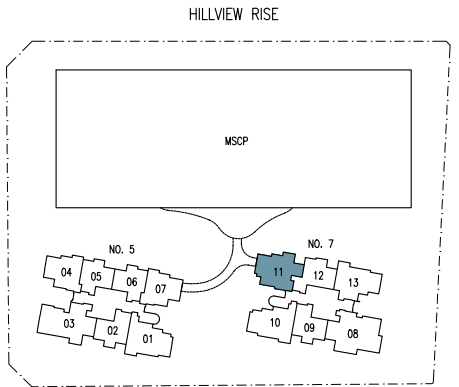


Disclaimer: The above plan is subject to any amendments as may be approved by the relevant authorities.



KEY PLAN

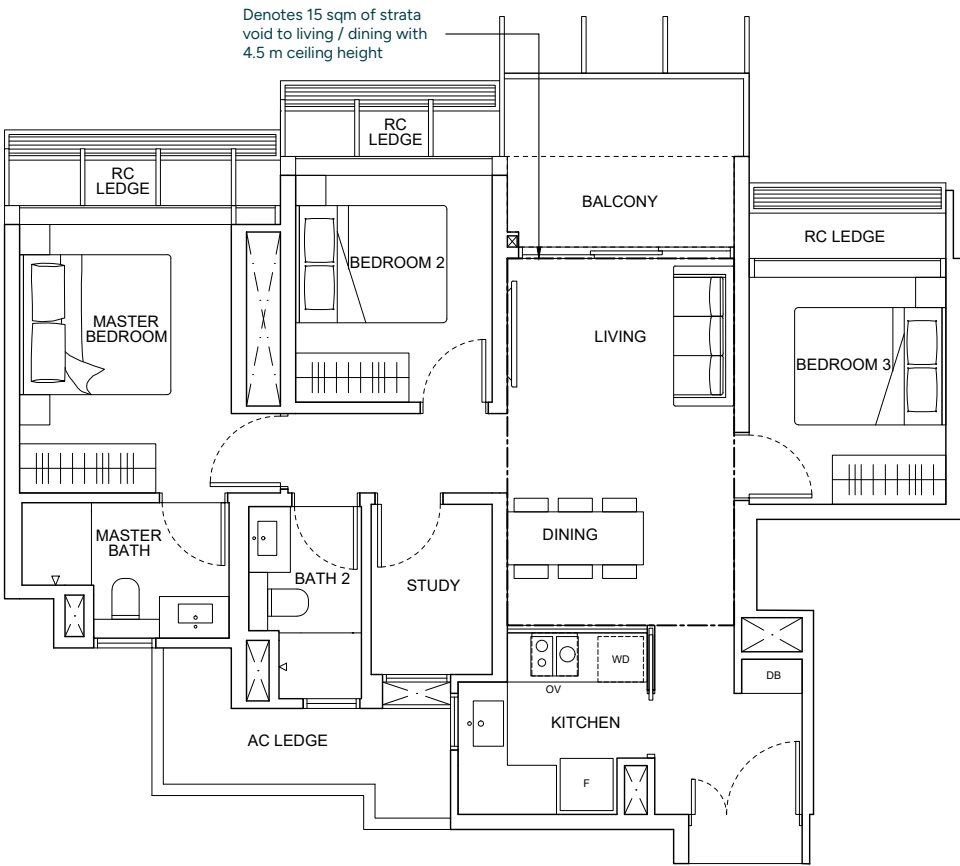
This key plan is not to scale



# 3-Bedroom + Study

Type C2(D)  
105 sqm / 1,130 sqft  
Includes 15 sqm of strata void to living / dining with 4.5 m ceiling height

Units (With Visual Screenings)  
#28-11



LEGEND

- DB Distribution Box
- F Fridge
- OV Oven
- WD Washer-Dryer

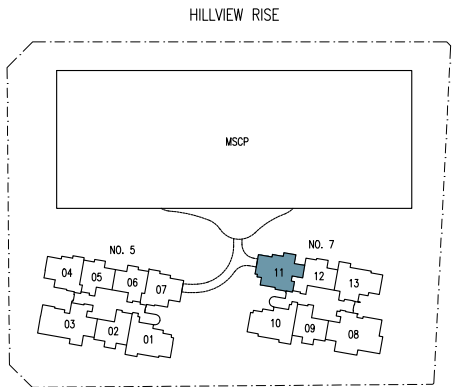


Disclaimer: The above plan is subject to any amendments as may be approved by the relevant authorities.



KEY PLAN

This key plan is not to scale

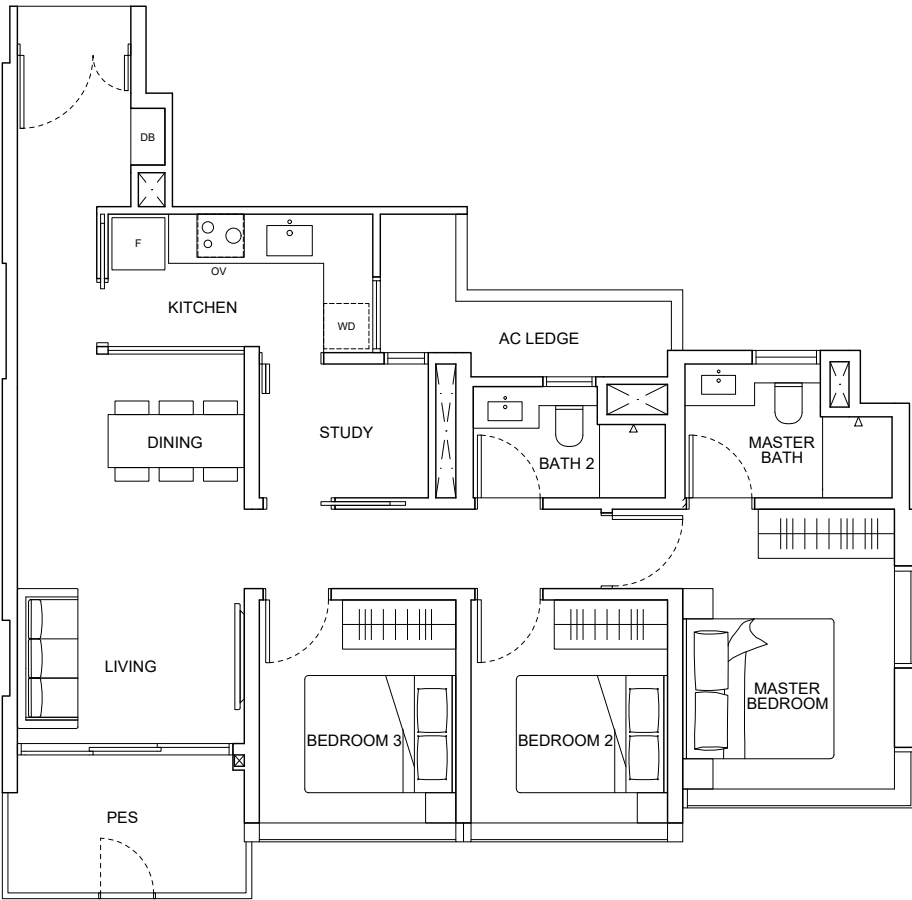




# 3-Bedroom + Study

Type C3(P)  
94 sqm / 1,012 sqft

Units  
#01-01



LEGEND

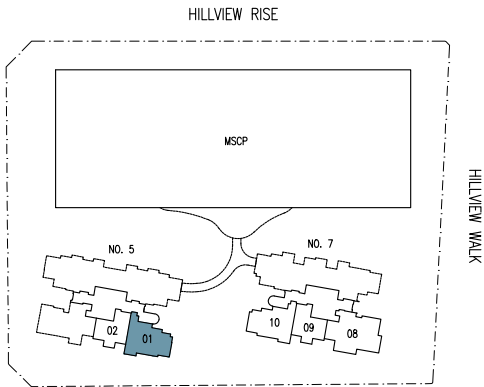
- DB Distribution Box
- F Fridge
- OV Oven
- WD Washer-Dryer



Disclaimer: The above plan is subject to any amendments as may be approved by the relevant authorities.



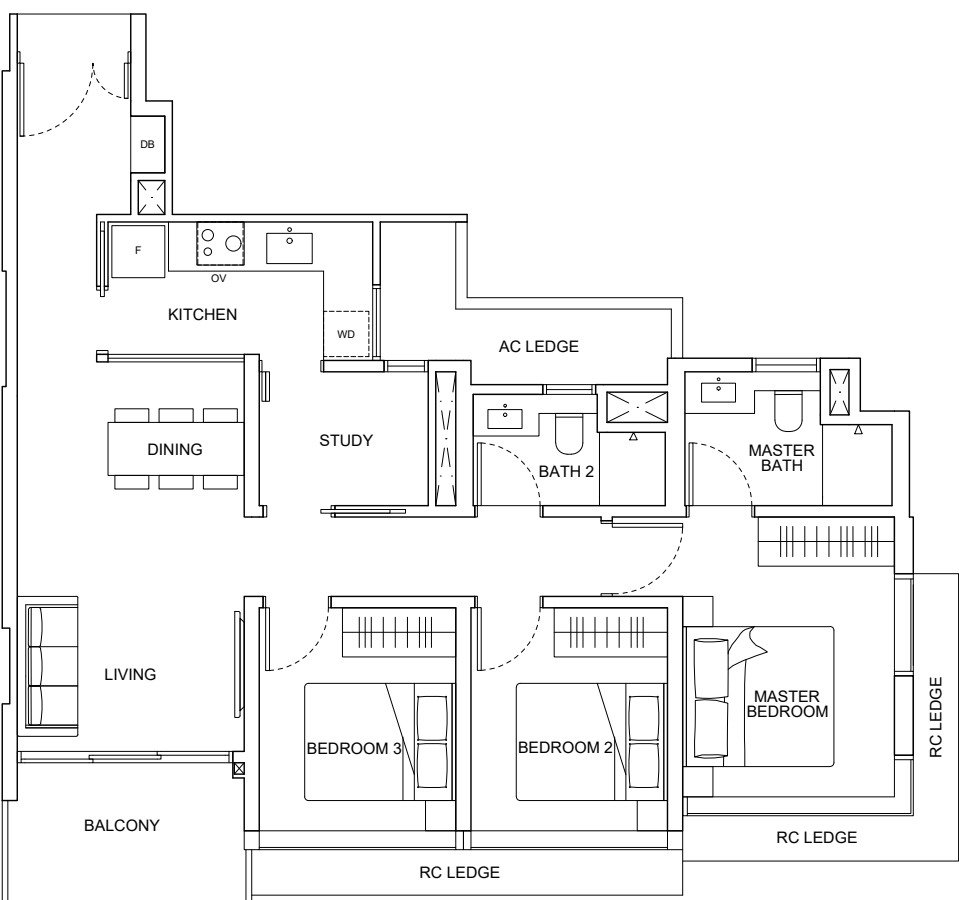
KEY PLAN  
This key plan is not to scale



# 3-Bedroom + Study

Type C3  
94 sqm / 1,012 sqft

Units  
#02-01 to #26-01



LEGEND

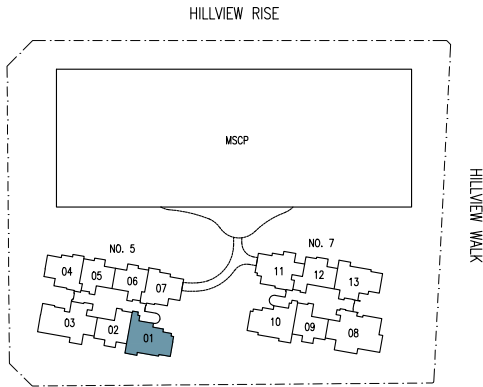
- DB Distribution Box
- F Fridge
- OV Oven
- WD Washer-Dryer



Disclaimer: The above plan is subject to any amendments as may be approved by the relevant authorities.



KEY PLAN  
This key plan is not to scale

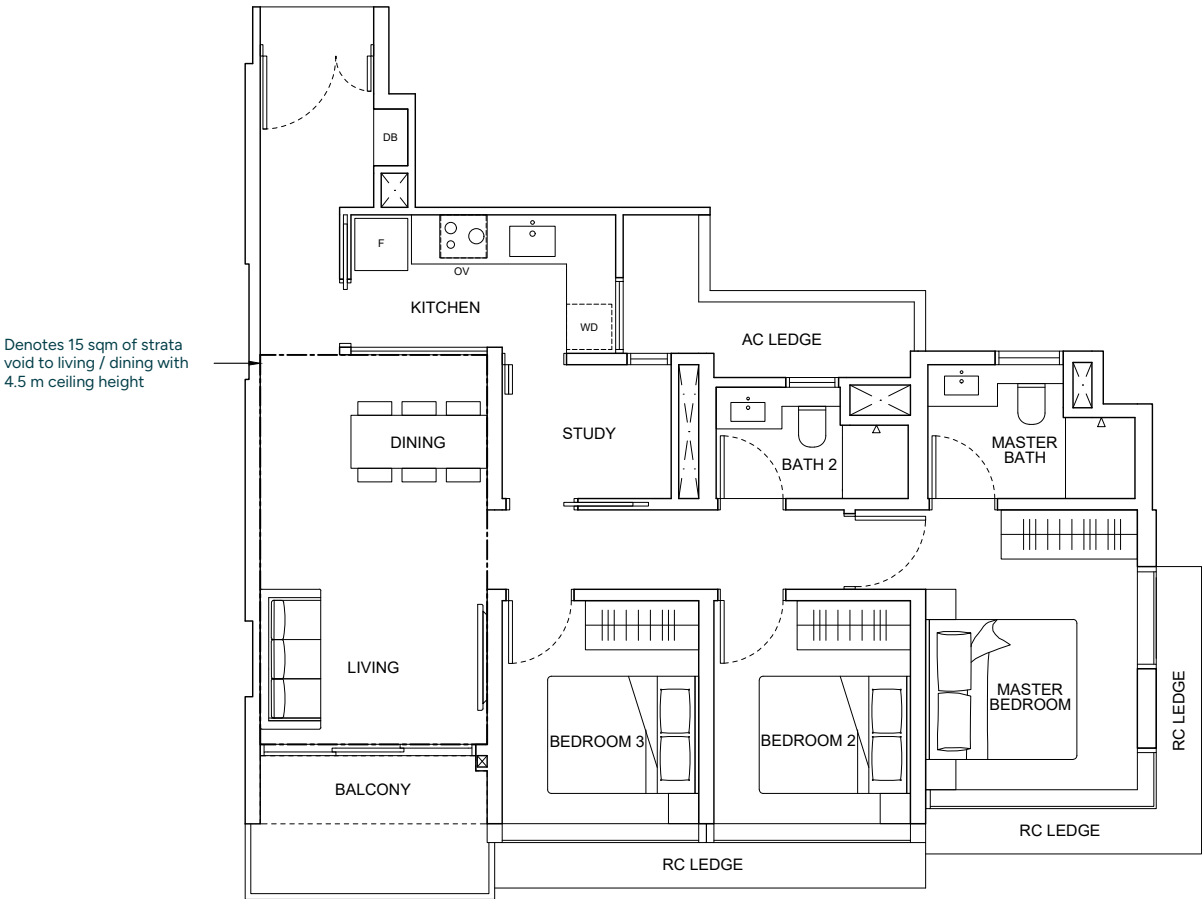


# 3-Bedroom + Study

## Type C3(D)

111 sqm / 1,195 sqft  
Includes 15 sqm of strata void to living / dining with 4.5 m ceiling height

Units  
#27-01



### LEGEND

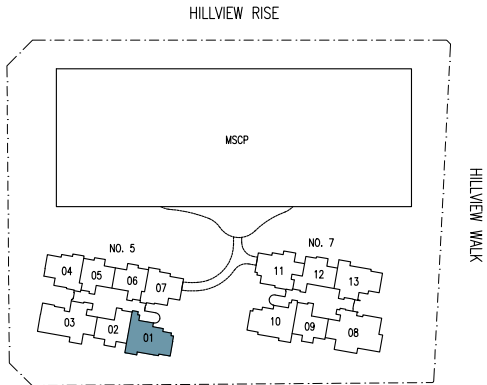
- DB Distribution Box
- F Fridge
- OV Oven
- WD Washer-Dryer



Disclaimer: The above plan is subject to any amendments as may be approved by the relevant authorities.



**KEY PLAN**  
This key plan is not to scale

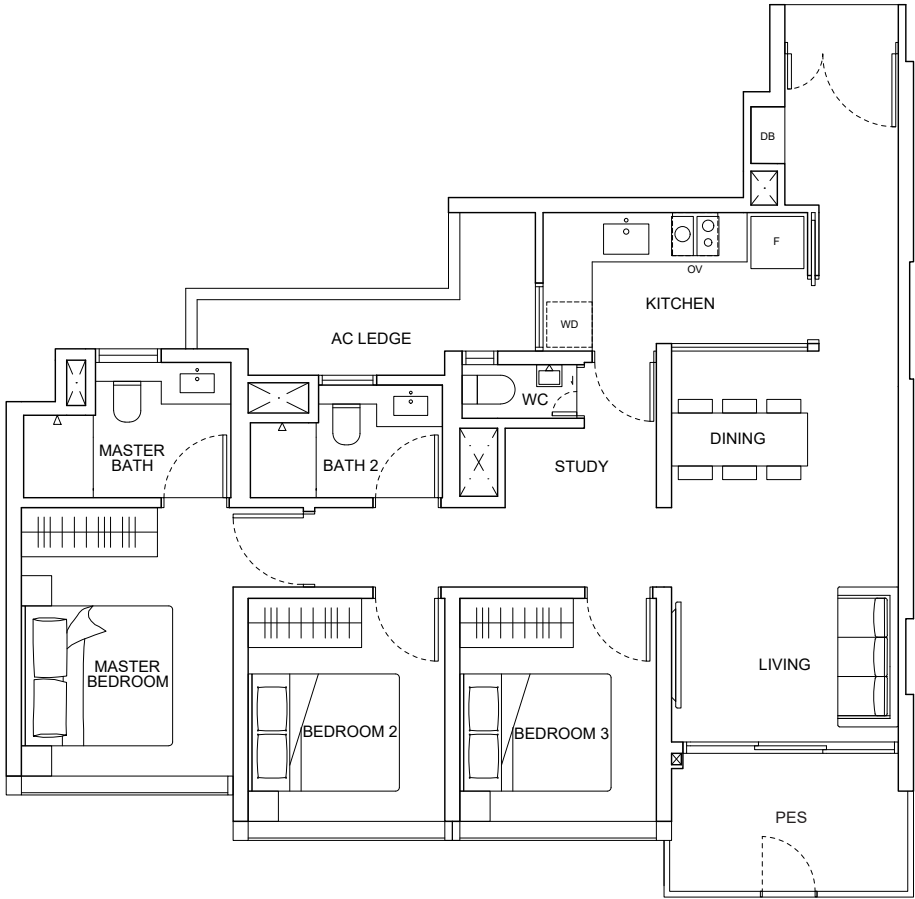


# 3-Bedroom + Study

## Type C4(P)

94 sqm / 1,012 sqft

Units  
#01-10



### LEGEND

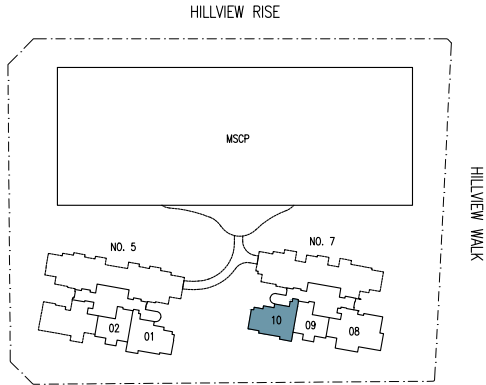
- DB Distribution Box
- F Fridge
- OV Oven
- WD Washer-Dryer



Disclaimer: The above plan is subject to any amendments as may be approved by the relevant authorities.



**KEY PLAN**  
This key plan is not to scale





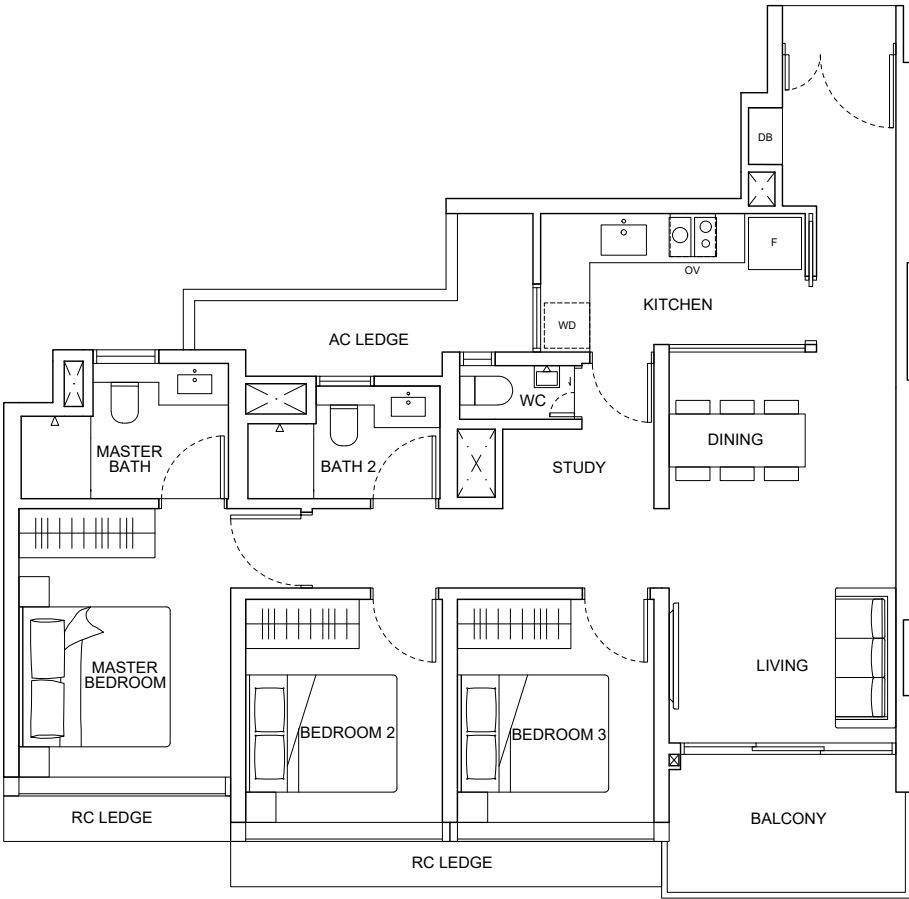
# 3-Bedroom + Study

## Type C4

94 sqm / 1,012 sqft

### Units

#02-10 to #27-10



### LEGEND

- DB Distribution Box
- F Fridge
- OV Oven
- WD Washer-Dryer

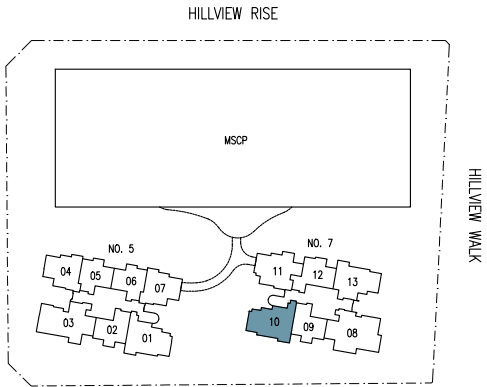


Disclaimer: The above plan is subject to any amendments as may be approved by the relevant authorities.



### KEY PLAN

This key plan is not to scale



# 3-Bedroom + Study

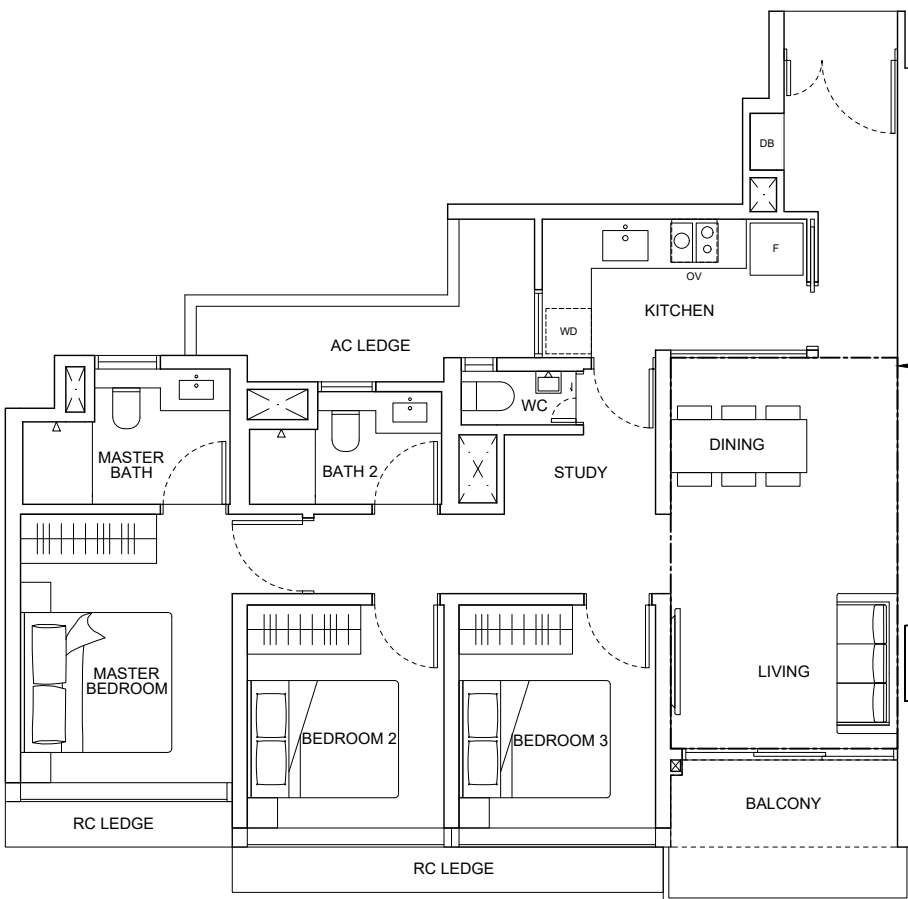
## Type C4(D)

111 sqm / 1,195 sqft

Includes 16 sqm of strata void to living / dining with 4.5 m ceiling height

### Units

#28-10



Denotes 16 sqm of strata void to living / dining with 4.5 m ceiling height

### LEGEND

- DB Distribution Box
- F Fridge
- OV Oven
- WD Washer-Dryer

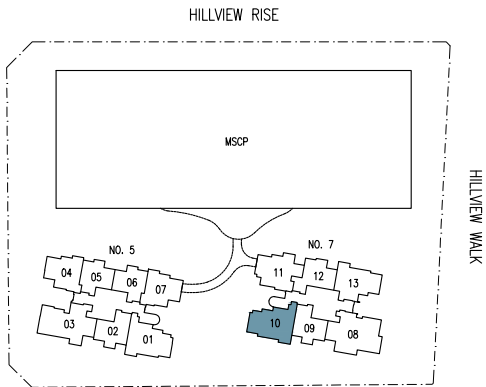


Disclaimer: The above plan is subject to any amendments as may be approved by the relevant authorities.



### KEY PLAN

This key plan is not to scale



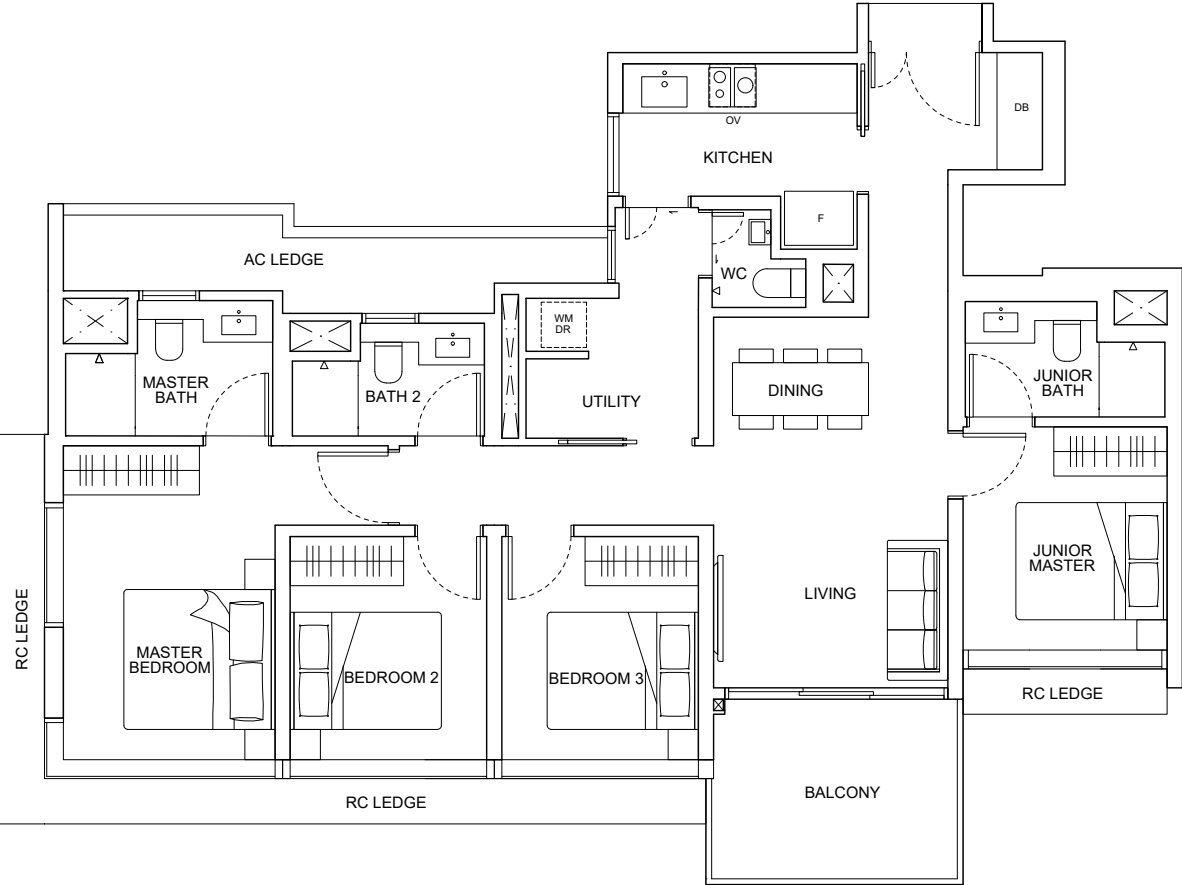
# 4-Bedroom

## Type D1A

117 sqm / 1,259 sqft

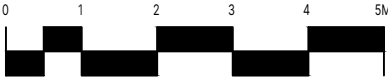
### Units

#02-03 to #12-03



### LEGEND

- DB Distribution Box
- F Fridge
- OV Oven
- WM Washing Machine
- DR Dryer

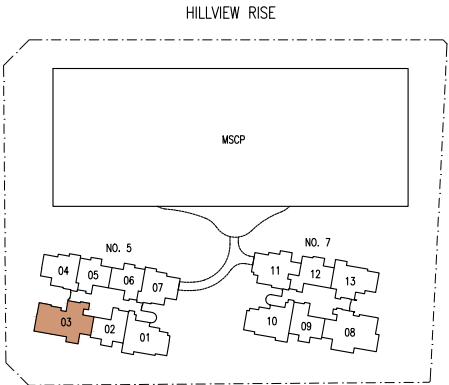


Disclaimer: The above plan is subject to any amendments as may be approved by the relevant authorities.



### KEY PLAN

This key plan is not to scale



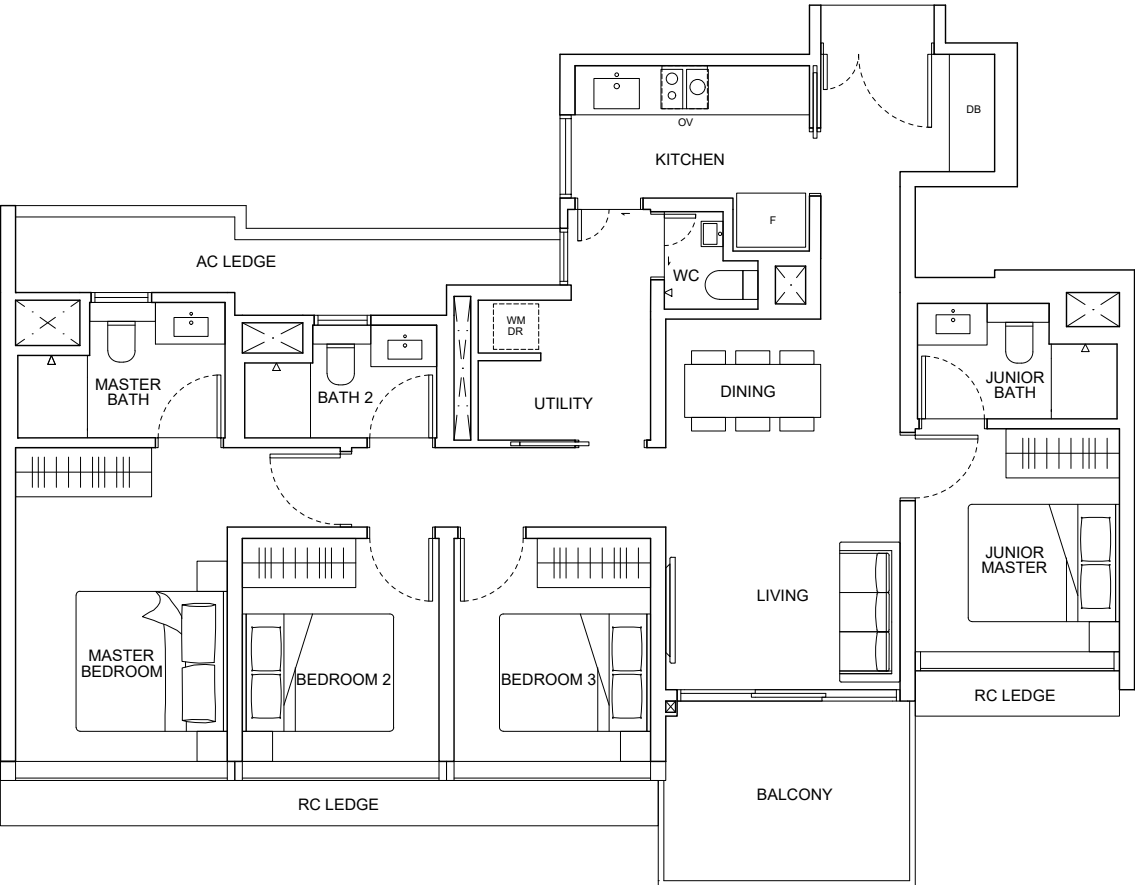
# 4-Bedroom

## Type D1B

117 sqm / 1,259 sqft

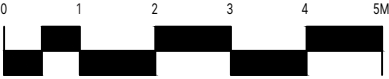
### Units

#13-03 to #26-03



### LEGEND

- DB Distribution Box
- F Fridge
- OV Oven
- WM Washing Machine
- DR Dryer

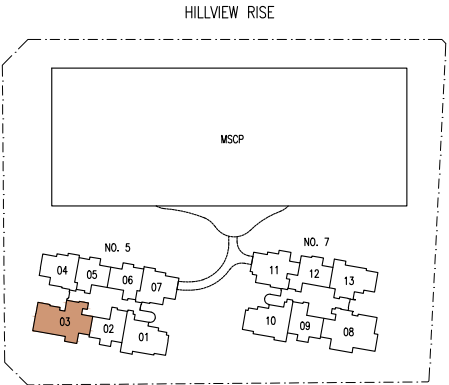


Disclaimer: The above plan is subject to any amendments as may be approved by the relevant authorities.



### KEY PLAN

This key plan is not to scale





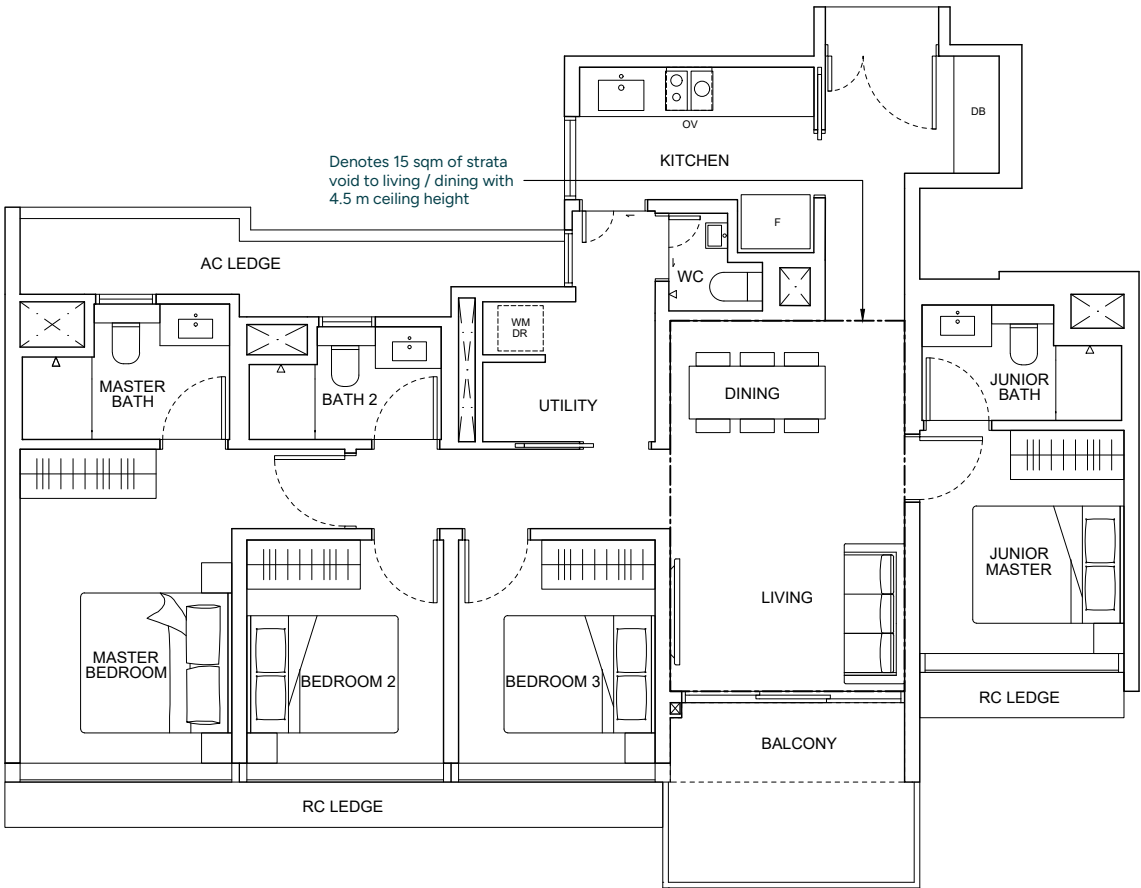
# 4-Bedroom

## Type D1B(D)

133 sqm / 1,432 sqft  
Includes 15 sqm of strata void to living / dining with 4.5 m ceiling height

### Units

#27-03



### LEGEND

- DB Distribution Box
- F Fridge
- OV Oven
- WM Washing Machine
- DR Dryer

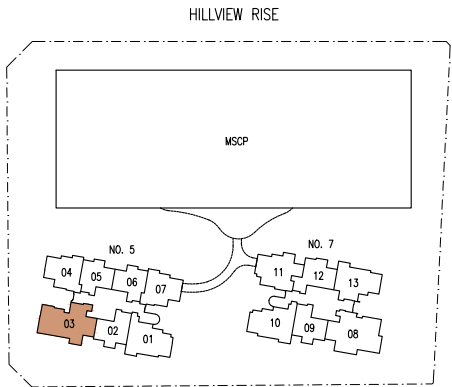


Disclaimer: The above plan is subject to any amendments as may be approved by the relevant authorities.



### KEY PLAN

This key plan is not to scale



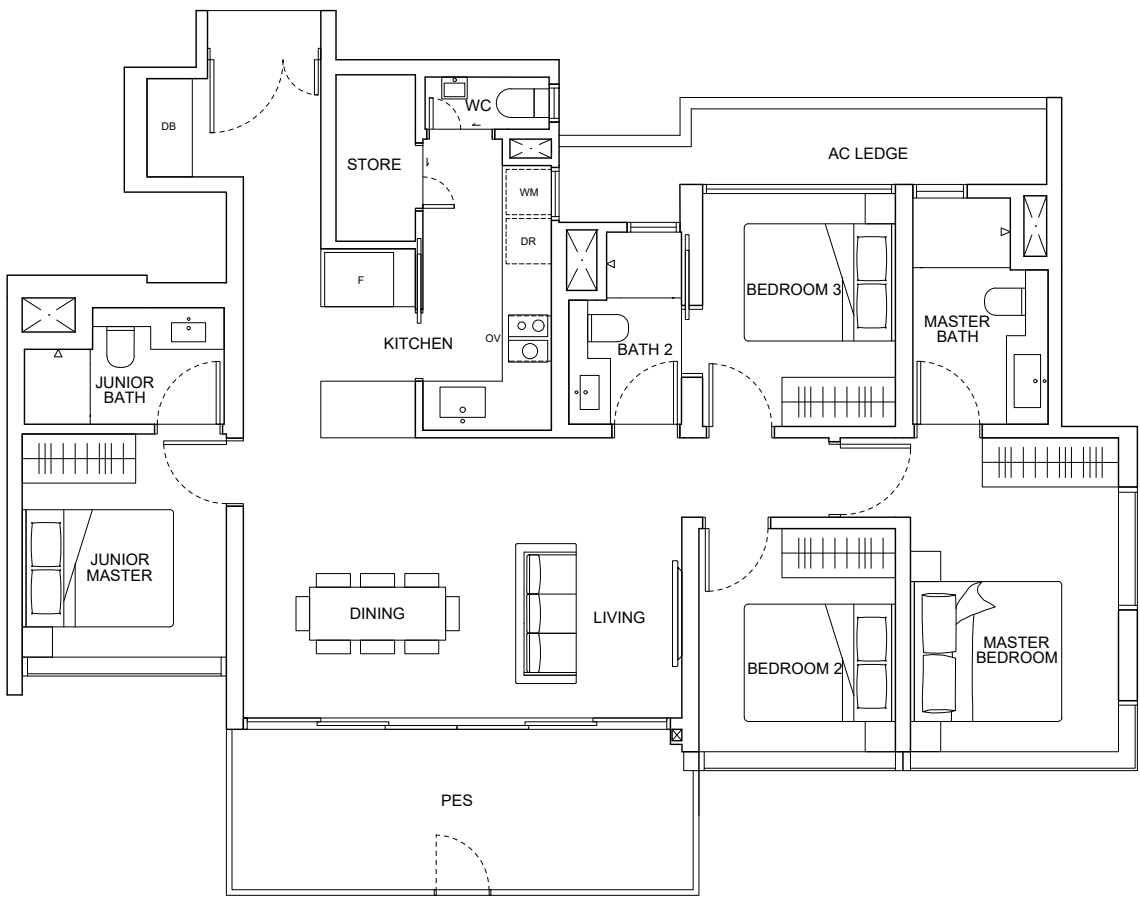
# 4-Bedroom

## Type D2(P)

128 sqm/ 1,378 sqft

### Units

#01-08



### LEGEND

- DB Distribution Box
- F Fridge
- OV Oven
- WM Washing Machine
- DR Dryer

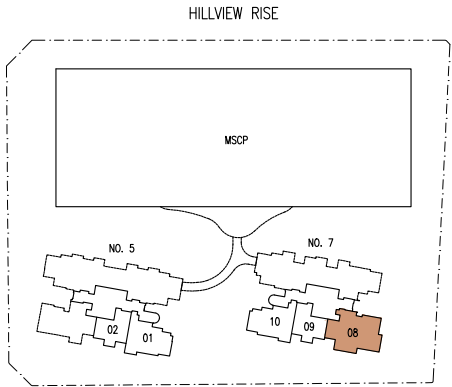


Disclaimer: The above plan is subject to any amendments as may be approved by the relevant authorities.



### KEY PLAN

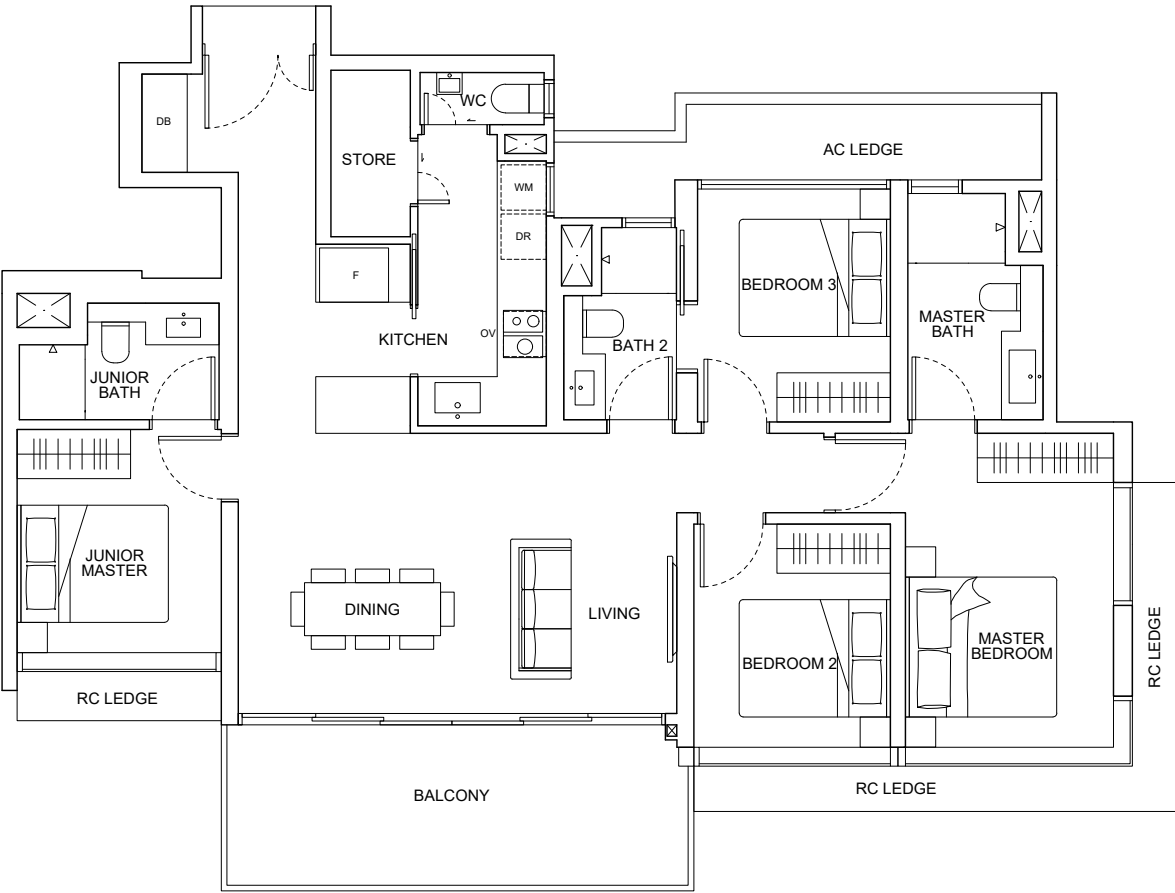
This key plan is not to scale



# 4-Bedroom

Type D2  
128 sqm / 1,378 sqft

Units  
#02-08 to #27-08



LEGEND

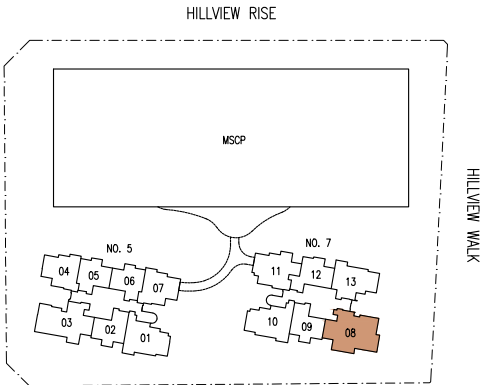
- DB Distribution Box
- F Fridge
- OV Oven
- WM Washing Machine
- DR Dryer



Disclaimer: The above plan is subject to any amendments as may be approved by the relevant authorities.



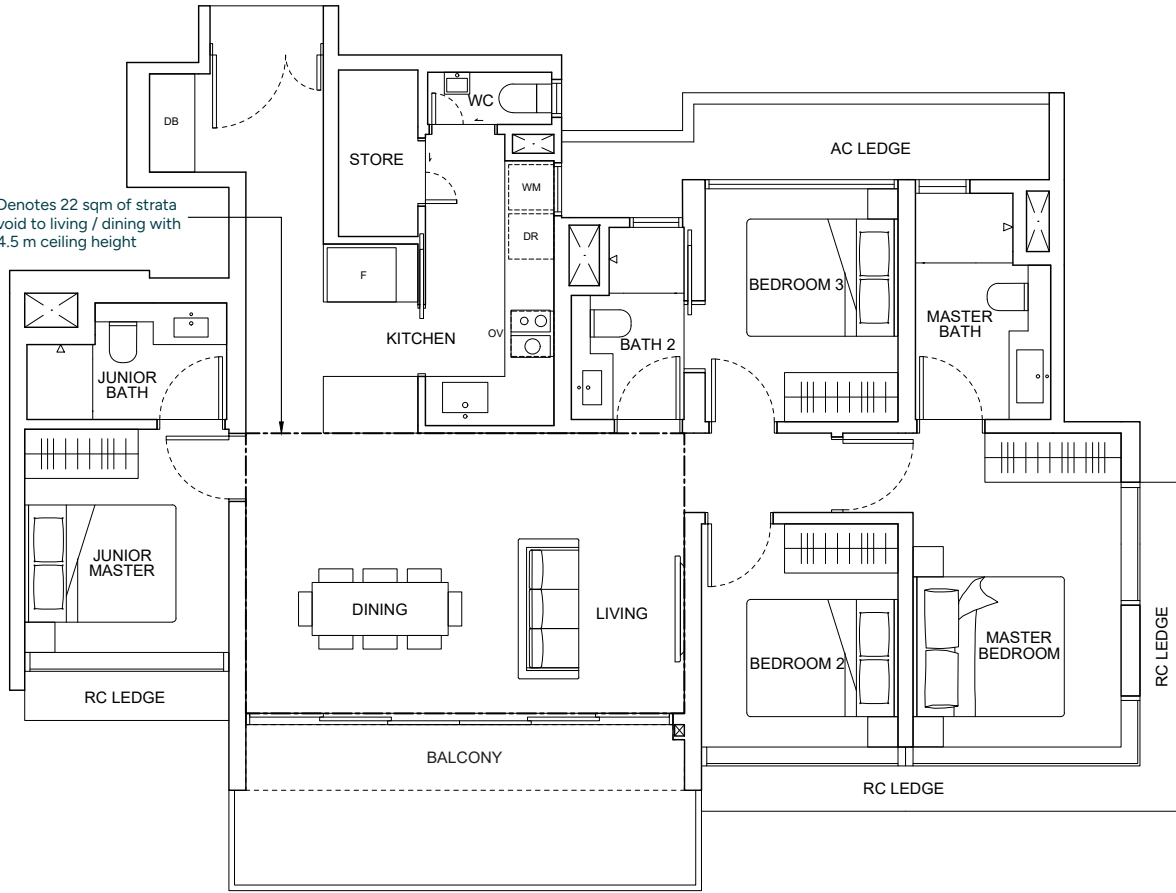
KEY PLAN  
This key plan is not to scale



# 4-Bedroom

Type D2(D)  
152 sqm / 1,636 sqft  
Includes 22 sqm of strata void to living / dining with 4.5 m ceiling height

Units  
#28-08



LEGEND

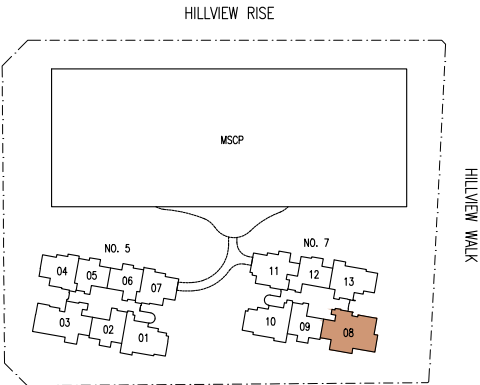
- DB Distribution Box
- F Fridge
- OV Oven
- WM Washing Machine
- DR Dryer



Disclaimer: The above plan is subject to any amendments as may be approved by the relevant authorities.

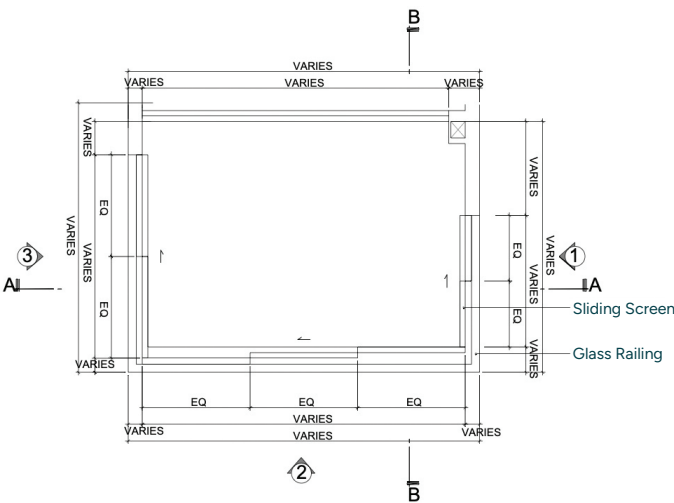


KEY PLAN  
This key plan is not to scale

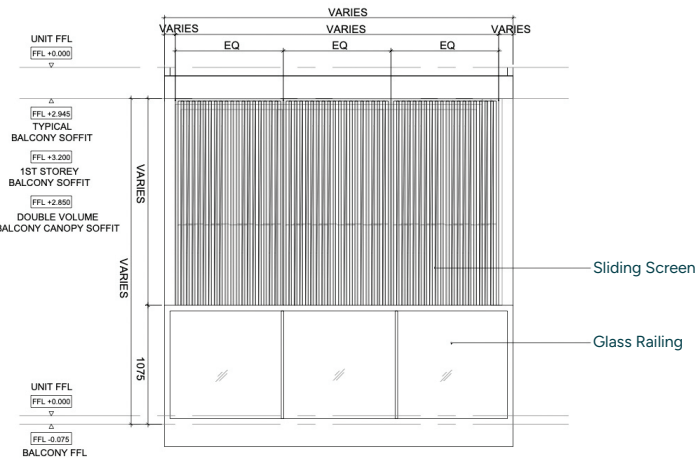




# Balcony Screen

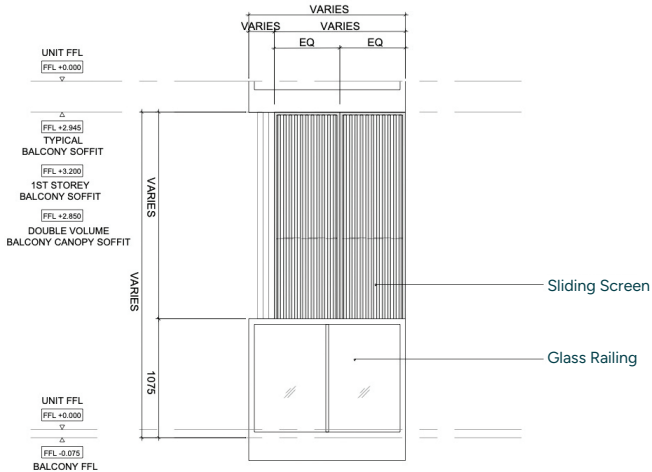


Typical Balcony Layout  
(Fully Closed)

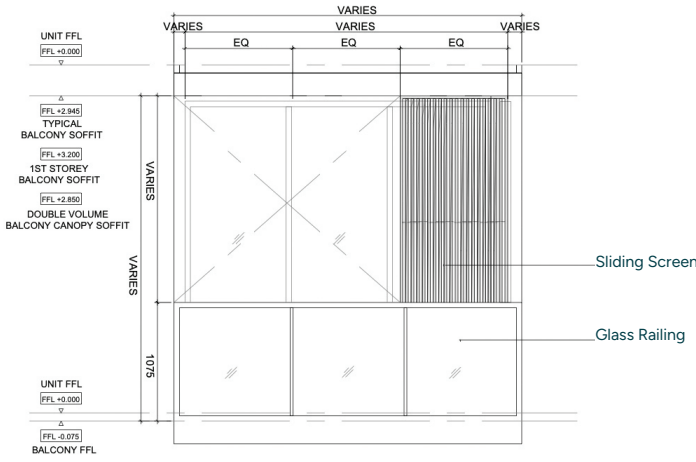


Balcony Elevation 2  
(Fully Closed)

Note: The balcony (if any) and/or private enclosed space (if any) are not to be enclosed except with a balcony screen which has been approved and complies with the competent authorities' guidelines  
The cost of screen and installation shall at the purchaser's own cost and expense



Balcony Elevation 1  
(Fully Closed)



Balcony Elevation 2  
(Fully Retracted)



Founded in 1960, Sekisui House, Ltd. is one of world's largest homebuilders and an international diversified developer, with cumulative sales of over 2.6 Million homes. Based in Osaka, Sekisui House has over 300 consolidated subsidiaries and affiliates, over 29,000 employees and is listed on the Tokyo Stock Exchange and Nagoya Stock Exchange.

Sekisui House aims to create homes and communities that improve with time and last for generations. With "Love of Humanity" as its Corporate Philosophy, Sekisui House believes that homes should offer comfort, security and peace of mind for residents, while maintaining harmony with the environment and its surroundings. Sekisui House has sustainability as a core corporate target and is now the global leader in the construction of net-zero-energy houses with more than 70,000 of them built since the product was launched in 2013. In 2009, Sekisui House expanded into several new international markets and now operates in the United States, Australia, China, Singapore and the United Kingdom.



Far East Organization is a Christian Enterprise, which develops real estate and operates businesses by serving with grace, love, integrity and honesty. Together with its Hong Kong-based sister company Sino Group, they are one of Asia's largest real estate groups, with operations in Singapore, Malaysia, Australia, Japan, China (Mainland and Hong Kong), Taiwan and USA.

Far East Organization is the largest private property developer in Singapore, having developed over 780 developments across all segments of real estate including 55,000 private homes in Singapore since its establishment in 1960. It includes three listed entities: Far East Orchard Limited, Far East Hospitality Trust and Yeo Hiap Seng Limited.

Far East Organization is the winner of 14 FIABCI World Prix d'Excellence awards, the highest honour in international real estate.

DISCLAIMER: The information contained herein is subject to change and cannot form part of an offer or contract. While every reasonable care has been taken in providing this information, the developer or its agent cannot be held responsible for any inaccuracies. Whilst we believe the contents of this brochure to be correct and accurate at time of print, they are not to be regarded as statements or representations of fact. Illustrations in the brochure are artist's impressions, which serve only to give an approximate idea of the project. All artist's impressions and all plans are subject to any amendments as may be approved by the relevant authorities. The developer reserves the right to modify any parts of the building prior to project completion as approved or directed by the Planning Authorities or as the owner deems fit in its sole discretion. The developer reserves any and all copyright, design and other proprietary rights in and to this document (or any part thereof) including all or any part of the information, material or artwork contained therein. Unless otherwise expressly agreed to in writing, this document or any part thereof may not be copied, modified, distributed, reproduced or reused without the express written consent of the developer.

Developer: East Residences Pte. Ltd. (202034351G) • Licence No.: C1476 • Tenure: 99 years commencing from 13 February 2023 • Encumbrances: Mortgage No. 1H/713736Q in favour of DBS Bank Ltd • Land Description: Lot No. 5170A of MK 10 at Hillview Rise • Expected Vacant Possession Date: 30 June 2028 • Expected Legal Completion Date: 30 June 2031