

Bio  STI

Swiss Technology of Implantology and Biomaterials GmbH

PRODUCT

CATALOG | Swiss Dental
Implant

ABOUT BIOSTI



Swiss Technology of Implantology and Biomaterials GmbH

Follow the light of technology



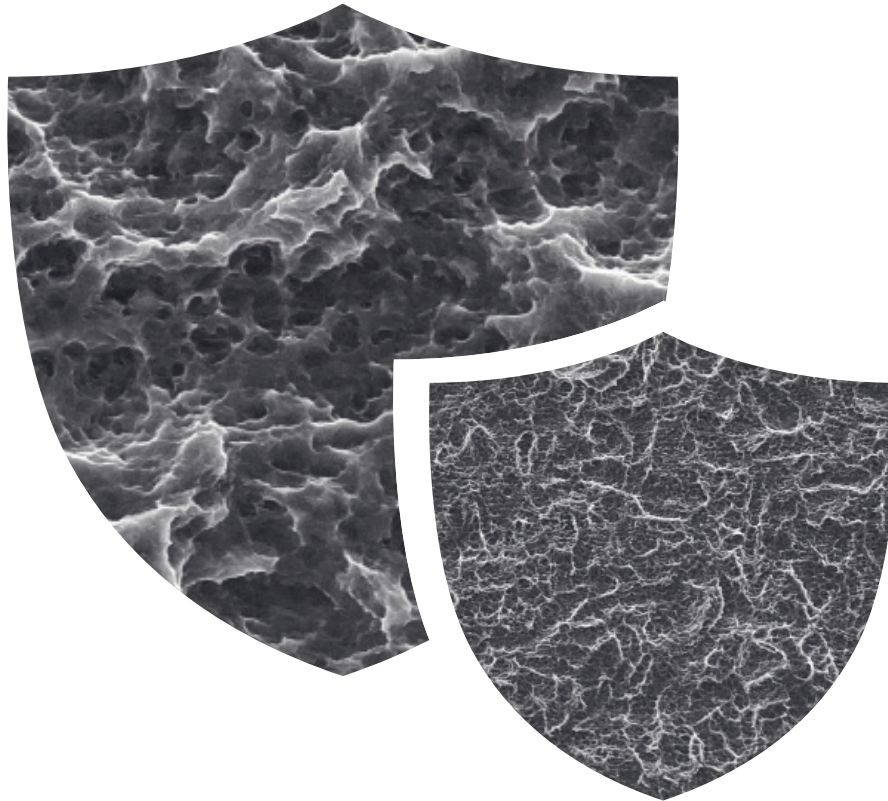
Our Mission

Located in the heart of high technology in Switzerland, BioSTI 's mission is to be a reliable and reputable implant manufacturer. Our high-quality products are backed by our innovative in-house R&D, modern production facilities and strict quality assurance control.

What makes us different ?

BioSTI Swiss Technology of Implantology and Biomaterials GmbH is a leading player in the dental implants market. The company is founded by experienced dental professionals and managed by highly qualified leading experts from the field of maxillofacial surgery, prosthodontists and periodontists.

The company manufactures dental products, dental implants, dental implant surgical kits and instruments along with internal dental implants prosthesis components. Over the years, BioSTI has gained the trust of hundreds of clinicians around the globe who count on our comprehensive and top of the line products to deliver successful and reliable patient outcomes. The company strives to maintain this trust by continuously offering unmatched, scientifically proven and affordable dental implants aimed at providing the best value in the industry.



BioSTI Implants with SLA Surface have a combination of sand blasted and acid etched . This process increases the Implant surface area by creating both micro and nano structures , allowing the surface to bind with more osteoblast cells. This surface also eliminates various surface contaminants with a thorough cleaning process. Acid etching ensures a high quality and pure implant surface

The combination of sand-blasting and acid-etching has been proven to be successful in numerous clinical and scientific studies. This process also creates an osteoconductive morphology, achieving superb osseointegration results compared to other surface treatment methods. In addition to all these, BioSTI Active Surface maintains surface activation in its dry form as well. This surface provides a fast osseointegration process and the shortest healing period.

KEY FEATURES

IMPLANT DESIGN



Micro Threads

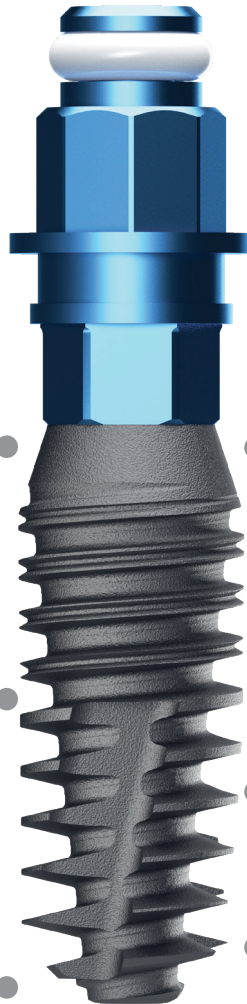
Reduces bone stresses and minimize bone resorption

Taper Form

Cylindrical shape promotes long-term osseointegration by enlarging surface area and bone to implant contact

Self-Taping Threads

Ensure better primary stability and avoid excessive force causing cortical bone absorption and promotes bone tapering during insertion.



Internal Connection

Self-locking to enhance the connection between fixture and abutment with 11° Morse Taper Improves the stability and to prevent micro-movement. Prevents of micro leakage and bacteria intrusion. Perfect hex-connection for Ultra Mini, Mini.

Surface Treatment

SLA (Sand-Blasted and Acid-Etching) process for surface

Apical Part

Easy insertion
Helps prevent damage to anatomical structures

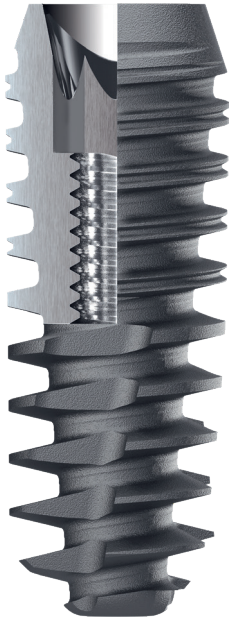
KEY FEATURES

IMPLANT DESIGN



Narrow and Bone Level

The Biosti implant system is incorporated in the Bone Level implant lines and ensures optimal esthetic results both in the anterior and posterior area.



Surgical Kit

The Biosti implant system is characterized by one unique surgical kit for bone level line. Its intuitive and elegant design prioritizes efficiency and ease of use.



AGRESSIVE SLA ULTRA MINI IMPLANT Ø3.0

Ref No	Size (L)	Ø	Material
STIA3010UM	10,0 mm	Ø3.0	Titanium Grade 4
STIA3011UM	11,5 mm	Ø3.0	Titanium Grade 4
STIA3013UM	13,0 mm	Ø3.0	Titanium Grade 4
STIA3015UM	15,0 mm	Ø3.0	Titanium Grade 4



AGRESSIVE SLA ACT ULTRA MINI IMPLANT Ø3.0

Ref No	Size (L)	Ø	Material
STIA3010UMAct	10,0 mm	Ø3.0	Titanium Grade 4
STIA3011UMAct	11,5 mm	Ø3.0	Titanium Grade 4
STIA3013UMAct	13,0 mm	Ø3.0	Titanium Grade 4
STIA3015UMAct	15,0 mm	Ø3.0	Titanium Grade 4





AGRESSIVE SLA MINI IMPLANT Ø3.5

Ref No	Size (L)	Ø	Material
STIA3585M	8,5 mm	Ø3.5	Titanium Grade 4
STIA3510M	10,0 mm	Ø3.5	Titanium Grade 4
STIA3511M	11,5 mm	Ø3.5	Titanium Grade 4
STIA3513M	13,0 mm	Ø3.5	Titanium Grade 4
STIA3515M	15,0 mm	Ø3.5	Titanium Grade 4



AGRESSIVE SLA ACT MINI IMPLANT Ø3.5

Ref No	Size (L)	Ø	Material
STIA3585MAct	8,5 mm	Ø3.5	Titanium Grade 4
STIA3510MAct	10,0 mm	Ø3.5	Titanium Grade 4
STIA3511MAct	11,5 mm	Ø3.5	Titanium Grade 4
STIA3513MAct	13,0 mm	Ø3.5	Titanium Grade 4
STIA3515MAct	15,0 mm	Ø3.5	Titanium Grade 4





AGRESSIVE SLA MINI IMPLANT Ø4.0

Ref No	Size (L)	Ø	Material
STIA4070M	7,0 mm	Ø4.0	Titanium Grade 4
STIA4085M	8,5 mm	Ø4.0	Titanium Grade 4
STIA4010M	10,0 mm	Ø4.0	Titanium Grade 4
STIA4011M	11,5 mm	Ø4.0	Titanium Grade 4
STIA4013M	13,0 mm	Ø4.0	Titanium Grade 4
STIA4015M	15,0 mm	Ø4.0	Titanium Grade 4



AGRESSIVE SLA ACT MINI IMPLANT Ø4.0

Ref No	Size (L)	Ø	Material
STIA4070MAct	7,0 mm	Ø4.0	Titanium Grade 4
STIA4085MAct	8,5 mm	Ø4.0	Titanium Grade 4
STIA4010MAct	10,0 mm	Ø4.0	Titanium Grade 4
STIA4011MAct	11,5 mm	Ø4.0	Titanium Grade 4
STIA4013MAct	13,0 mm	Ø4.0	Titanium Grade 4
STIA4015MAct	15,0 mm	Ø4.0	Titanium Grade 4





AGRESSIVE SLA MINI IMPLANT Ø4.5

Ref No	Size (L)	Ø	Material
STIA4570M	7,0 mm	Ø4.5	Titanium Grade 4
STIA4585M	8,5 mm	Ø4.5	Titanium Grade 4
STIA4510M	10,0 mm	Ø4.5	Titanium Grade 4
STIA4511M	11,5 mm	Ø4.5	Titanium Grade 4
STIA4513M	13,0 mm	Ø4.5	Titanium Grade 4
STIA4515M	15,0 mm	Ø4.5	Titanium Grade 4



AGRESSIVE SLA ACT MINI IMPLANT Ø4.5

Ref No	Size (L)	Ø	Material
STIA4570MAct	7,0 mm	Ø4.5	Titanium Grade 4
STIA4585MAct	8,5 mm	Ø4.5	Titanium Grade 4
STIA4510MAct	10,0 mm	Ø4.5	Titanium Grade 4
STIA4511MAct	11,5 mm	Ø4.5	Titanium Grade 4
STIA4513MAct	13,0 mm	Ø4.5	Titanium Grade 4
STIA4515MAct	15,0 mm	Ø4.5	Titanium Grade 4



PRODUCTS

STI IMPLANT SLA & ACT



AGRESSIVE SLA MINI IMPLANT Ø5.0

Ref No	Size (L)	Ø	Material
STIA5070M	7,0 mm	Ø5.0	Titanium Grade 4
STIA5085M	8,5 mm	Ø5.0	Titanium Grade 4
STIA5010M	10,0 mm	Ø5.0	Titanium Grade 4
STIA5011M	11,5 mm	Ø5.0	Titanium Grade 4
STIA5013M	13,0 mm	Ø5.0	Titanium Grade 4
STIA5015M	15,0 mm	Ø5.0	Titanium Grade 4



AGRESSIVE SLA ACT MINI IMPLANT Ø5.0

Ref No	Size (L)	Ø	Material
STIA5070MAct	7,0 mm	Ø5.0	Titanium Grade 4
STIA5085MAct	8,5 mm	Ø5.0	Titanium Grade 4
STIA5010MAct	10,0 mm	Ø5.0	Titanium Grade 4
STIA5011MAct	11,5 mm	Ø5.0	Titanium Grade 4
STIA5013MAct	13,0 mm	Ø5.0	Titanium Grade 4
STIA5015MAct	15,0 mm	Ø5.0	Titanium Grade 4





HEALING ABUTMENT ULTRA MINI

Ref No	Size (L)	Ø	Material
STI2HLA3013UM	GH1 H3	Ø3.0	Titanium Grade 5
STI2HLA3025UM	GH2 H5	Ø3.0	Titanium Grade 5
STI2HLA3037UM	GH3 H7	Ø3.0	Titanium Grade 5



HEALING ABUTMENT MINI

Ref No	Size (L)	Ø	Material
STI1HLA4513M	GH 1 H 3	Ø4.5	Titanium Grade 5
STI1HLA4525M	GH 2 H 5	Ø4.5	Titanium Grade 5
STI1HLA4537M	GH 3 H 7	Ø4.5	Titanium Grade 5
STI1HLA5013M	GH 1 H 3	Ø5.0	Titanium Grade 5
STI1HLA5025M	GH 2 H 5	Ø5.0	Titanium Grade 5
STI1HLA5037M	GH 3 H 7	Ø5.0	Titanium Grade 5
STI1HLA5513M	GH 1 H 3	Ø5.5	Titanium Grade 5
STI1HLA5536M	GH 3 H 6	Ø5.5	Titanium Grade 5
STI1HLA6013M	GH 1 H 3	Ø6.0	Titanium Grade 5
STI1HLA6025M	GH 2 H 5	Ø6.0	Titanium Grade 5
STI1HLA6037M	GH 3 H 7	Ø6.0	Titanium Grade 5





SINUS HEALING ABUTMENT ULTRA MINI

Ref No	Size (L)	Ø	Material
STIHLASWUM	-	Ø4.0	Titanium Grade 5



SINUS HEALING ABUTMENT MINI

Ref No	Size (L)	Ø	Material
STIHLASWM	-	Ø4.5	Titanium Grade 5



ANATOMICAL STRAIGHT ABUTMENT ULTRA MINI

Ref No	Size (L)	Ø	Material
STI2ESA301UM	GH:1,0 H:5,5	Ø3.0	Titanium Grade 5
STI2ESA302UM	GH:2,0 H:5,5	Ø3.0	Titanium Grade 5
STI2ESA303UM	GH:3,0 H:5,5	Ø3.0	Titanium Grade 5
STI2ESA304UM	GH:4,0 H:5,5	Ø3.0	Titanium Grade 5
STI2ESA305UM	GH:5,0 H:5,5	Ø3.0	Titanium Grade 5



STRAIGHT ABUTMENT MINI

Ref No	Size (L)	Ø	Material
STI1SA45155M	GH:1,0 H:5,5	Ø4.5	Titanium Grade 5
STI1SA45255M	GH:2,0 H:5,5	Ø4.5	Titanium Grade 5
STI1SA45355M	GH:3,0 H:5,5	Ø4.5	Titanium Grade 5
STI1SA45455M	GH:4,0 H:5,5	Ø4.5	Titanium Grade 5
STI1SA45555M	GH:5,0 H:5,5	Ø4.5	Titanium Grade 5





STRAIGHT ABUTMENT MINI

Ref No	Size (L)	Ø	Material
STI1SA50155M	GH 1 H 5.5	Ø5.0	Titanium Grade 5
STI1SA50255M	GH 2 H 5.5	Ø5.0	Titanium Grade 5
STI1SA50355M	GH 3 H 5.5	Ø5.0	Titanium Grade 5
STI1SA50455M	GH 4 H 5.5	Ø5.0	Titanium Grade 5
STI1SA50555M	GH 5 H 5.5	Ø5.0	Titanium Grade 5
STI1SA55155M	GH 1 H 5.5	Ø5.5	Titanium Grade 5
STI1SA55255M	GH 2 H 5.5	Ø5.5	Titanium Grade 5
STI1SA55355M	GH 3 H 5.5	Ø5.5	Titanium Grade 5
STI1SA55455M	GH 4 H 5.5	Ø5.5	Titanium Grade 5
STI1SA55555M	GH 5 H 5.5	Ø5.5	Titanium Grade 5
STI1SA55170M	GH 1 H 7.0	Ø5.5	Titanium Grade 5
STI1SA55270M	GH 2 H 7.0	Ø5.5	Titanium Grade 5
STI1SA55370M	GH 3 H 7.0	Ø5.5	Titanium Grade 5
STI1SA55470M	GH 4 H 7.0	Ø5.5	Titanium Grade 5
STI1SA55570M	GH 5 H 7.0	Ø5.5	Titanium Grade 5
STI1SA60155M	GH 1 H 5.5	Ø6.0	Titanium Grade 5
STI1SA60255M	GH 2 H 5.5	Ø6.0	Titanium Grade 5
STI1SA60355M	GH 3 H 5.5	Ø6.0	Titanium Grade 5
STI1SA60455M	GH 4 H 5.5	Ø6.0	Titanium Grade 5
STI1SA60555M	GH 5 H 5.5	Ø6.0	Titanium Grade 5





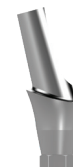
ANATOMICAL ANGLED ABUTMENT ULTRA MINI

Ref No	Size (L)	Ø	Material
STI2ANA30215XUM	GH2 X-TYPE 15°	Ø3.0	Titanium Grade 5



ANATOMICAL ANGLED ABUTMENT MINI

Ref No	Size (L)	Ø	Material
STI1EANA43215XM	GH2 X-TYPE 15°	Ø4.3	Titanium Grade 5
STI1EANA43215YM	GH2 Y-TYPE 15°	Ø4.3	Titanium Grade 5
STI1EANA43225XM	GH2 X-TYPE 25°	Ø4.3	Titanium Grade 5
STI1EANA43225YM	GH2 Y-TYPE 25°	Ø4.3	Titanium Grade 5
STI1EANA43415XM	GH4 X-TYPE 15°	Ø4.3	Titanium Grade 5
STI1EANA43415YM	GH4 Y-TYPE 15°	Ø4.3	Titanium Grade 5
STI1EANA43425XM	GH4 X-TYPE 25°	Ø4.3	Titanium Grade 5
STI1EANA43425YM	GH4 Y-TYPE 25°	Ø4.3	Titanium Grade 5
STI1EANA45215XM	GH2 X-TYPE 15°	Ø4.5	Titanium Grade 5
STI1EANA45215YM	GH2 Y-TYPE 15°	Ø4.5	Titanium Grade 5
STI1EANA45225XM	GH2 X-TYPE 25°	Ø4.5	Titanium Grade 5
STI1EANA45225YM	GH2 Y-TYPE 25°	Ø4.5	Titanium Grade 5
STI1EANA45415XM	GH4 X-TYPE 15°	Ø4.5	Titanium Grade 5
STI1EANA45415YM	GH4 Y-TYPE 15°	Ø4.5	Titanium Grade 5
STI1EANA45425XM	GH4 X-TYPE 25°	Ø4.5	Titanium Grade 5





ANATOMICAL ANGLED ABUTMENT MINI

Ref No	Size (L)	Ø	Material
STI1EANA45425YM	GH4 Y-TYPE 25°	Ø4.5	Titanium Grade 5
STI1EANA55215XM	GH2 X-TYPE 15°	Ø5.5	Titanium Grade 5
STI1EANA55215YM	GH2 Y-TYPE 15°	Ø5.5	Titanium Grade 5
STI1EANA55225XM	GH2 X-TYPE 25°	Ø5.5	Titanium Grade 5
STI1EANA55225YM	GH2 Y-TYPE 25°	Ø5.5	Titanium Grade 5
STI1EANA55415XM	GH4 X-TYPE 15°	Ø5.5	Titanium Grade 5
STI1EANA55415YM	GH4 Y-TYPE 15°	Ø5.5	Titanium Grade 5
STI1EANA55425XM	GH4 X-TYPE 25°	Ø5.5	Titanium Grade 5
STI1EANA55425YM	GH4 Y-TYPE 25°	Ø5.5	Titanium Grade 5



BALL ATTACHMENT ULTRA MINI

Ref No	Size (L)	Ø	Material
STI2BAS301UM	GH 1	Ø3.0	Titanium Grade 5
STI2BAS302UM	GH 2	Ø3.0	Titanium Grade 5
STI2BAS303UM	GH 3	Ø3.0	Titanium Grade 5
STI2BAS304UM	GH 4	Ø3.0	Titanium Grade 5
STI2BAS305UM	GH 5	Ø3.0	Titanium Grade 5





BALL ATTACHMENT MINI

Ref No	Size (L)	Ø	Material
STI1BAS351M	GH 1	Ø3.5	Titanium Grade 5
STI1BAS352M	GH 2	Ø3.5	Titanium Grade 5
STI1BAS353M	GH 3	Ø3.5	Titanium Grade 5
STI1BAS354M	GH 4	Ø3.5	Titanium Grade 5
STI1BAS355M	GH 5	Ø3.5	Titanium Grade 5



BALL ATTACHMENT ANALOG ULTRA MINI

Ref No	Size (L)	Ø	Material
STI2BLAUM	-	-	Titanium Grade 5



BALL ATTACHMENT ANALOG MINI

Ref No	Size (L)	Ø	Material
STI1BLAM	-	-	Titanium Grade 5



BALL ATTACHMENT CAP (NORMAL-HARD)

Ref No	Size (L)	Ø	Material
STI1BACAPN	-	-	-
STI1BACAPH	-	-	-





LOCATOR ABUTMENT ULTRA MINI

Ref No	Size (L)	Ø	Material
STILCT1UM	GH 1	–	Titanium Grade 5
STILCT2UM	GH 2	–	Titanium Grade 5
STILCT3UM	GH 3	–	Titanium Grade 5
STILCT4UM	GH 4	–	Titanium Grade 5
STILCT5UM	GH 5	–	Titanium Grade 5



LOCATOR ABUTMENT MINI

Ref No	Size (L)	Ø	Material
STILCT1M	GH1	–	Titanium Grade 5
STILCT2M	GH2	–	Titanium Grade 5
STILCT3M	GH3	–	Titanium Grade 5
STILCT4M	GH4	–	Titanium Grade 5
STILCT5M	GH5	–	Titanium Grade 5



LOCATOR ABUTMENT ANALOG

Ref No	Size (L)	Ø	Material
STILILA	–	–	Titanium Grade 5



LOCATOR ABUTMENT TRANSFER COPING

Ref No	Size (L)	Ø	Material
STI1LOCITI	–	–	Titanium Grade 5





LOCATOR ABUTMENT CAP (NORMAL -HARD)

Ref No	Size (L)	Ø	Material
STI1LCAPN	-	-	-
STI1LCAPH	-	-	-



IMPLANT LAB. ANALOG ULTRA MINI

Ref No	Size (L)	Ø	Material
STI2ILAUM	-	-	Titanium Grade 5



IMPLANT LAB. ANALOG MINI

Ref No	Size (L)	Ø	Material
STI1ILAM	-	-	Titanium Grade 5



DIGITAL ANALOG ULTRA MINI

Ref No	Size (L)	Ø	Material
STIDGAUM	-	-	Titanium Grade 5



DIGITAL ANALOG MINI

Ref No	Size (L)	Ø	Material
STIDGAM	-	-	Titanium Grade 5





OPEN TRAY TRANSFER COPING ULTRA MINI

Ref No	Size (L)	Ø	Material
STI1AKITIUMH (Hex)	–	–	Titanium Grade 5
STI1AKITIUM (Non-Hex)	–	–	Titanium Grade 5



OPEN TRAY TRANSFER COPING MINI

Ref No	Size (L)	Ø	Material
STI1AKITIMH (Hex)	–	–	Titanium Grade 5
STI1AKITIM (Non-Hex)	–	–	Titanium Grade 5



CLOSED TRAY TRANSFER COPING ULTRA MINI

Ref No	Size (L)	Ø	Material
STI2ITI3011UM	11	Ø3.0	Titanium Grade 5
STI2ITI3014UM	14	Ø3.0	Titanium Grade 5



CLOSED TRAY TRANSFER COPING MINI

Ref No	Size (L)	Ø	Material
STI1ITI4011M	11	Ø4.0	Titanium Grade 5
STI1ITI4014M	14	Ø4.0	Titanium Grade 5
STI1ITI4511M	11	Ø4.5	Titanium Grade 5
STI1ITI4514M	14	Ø4.5	Titanium Grade 5
STI1ITI5011M	11	Ø5.0	Titanium Grade 5
STI1ITI5014M	14	Ø5.0	Titanium Grade 5





PEEK ABUTMENT ULTRA MINI

Ref No	Size (L)	Ø	Material
STI1PAPUMH (Hex)	-	-	PEEK
STI1PAUM (Non-Hex)	-	-	PEEK



PEEK ABUTMENT MINI

Ref No	Size (L)	Ø	Material
STI1PAMH (Hex)	-	-	PEEK
STI1PAM (Non-Hex)	-	-	PEEK



UNIVERSAL ABUTMENT ULTRA MINI

Ref No	Size (L)	Ø	Material
STI1UAUMH (Hex)	-	-	Titanium Grade 5
STI1UAUM (Non-Hex)	-	-	Titanium Grade 5



UNIVERSAL ABUTMENT MINI

Ref No	Size (L)	Ø	Material
STI1UAMH (Hex)	-	-	Titanium Grade 5
STI1UAM (Non-Hex)	-	-	Titanium Grade 5





Ti-BASE ABUTMENT ULTRA MINI

	Ref No	Size (L)	Ø	Material
(Hex)	STITBASE1UMHS	GH 0.6 S	–	Titanium Grade 5
	STITBASE2UMHS	GH 1.5 S	–	Titanium Grade 5
	STITBASE3UMHS	GH 2.5 S	–	Titanium Grade 5
(Non-Hex)	STITBASE1UMS	GH 0.6 S	–	Titanium Grade 5
	STITBASE2UMS	GH 1.5 S	–	Titanium Grade 5
	STITBASE3UMS	GH 2.5 S	–	Titanium Grade 5



Ti-BASE ABUTMENT MINI

	Ref No	Size (L)	Ø	Material
(Hex)	STITBASE1MHS	GH 0.6 S	–	Titanium Grade 5
	STITBASE2MHS	GH 1.5 S	–	Titanium Grade 5
	STITBASE3MHS	GH 2.5 S	–	Titanium Grade 5
(Non-Hex)	STITBASE1MS	GH 0.6 S	–	Titanium Grade 5
	STITBASE2MS	GH 1.5 S	–	Titanium Grade 5
	STITBASE3MS	GH 2.5 S	–	Titanium Grade 5



Ti-BASE ABUTMENT CASTABLE MANUAL

	Ref No	Size (L)	Ø	Material
	STITCASM	–	–	Titanium Grade 5



PREMILL ABUTMENT ULTRA MINI

	Ref No	Size (L)	Ø	Material
	STIPREUMA	–	–	Titanium Grade 5





PREMILL ABUTMENT MINI

Ref No	Size (L)	Ø	Material
STIPREMA	-	-	Titanium Grade 5



TELESCOPIC ABUTMENT ULTRA MINI

Ref No	Size (L)	Ø	Material
STI1TELAUM	-	-	Titanium Grade 5



TELESCOPIC ABUTMENT MINI

Ref No	Size (L)	Ø	Material
STI1TELAM	-	-	Titanium Grade 5



UCLA ABUTMENT MINI

Ref No	Size (L)	Ø	Material
STI1UCLAMH (Hex)	-	-	Pom C-Delrin
STI1UCLAM (Non-Hex)	-	-	Pom C-Delrin





MULTI UNIT STRAIGHT ABUTMENT MINI

Ref No	Size (L)	Ø	Material
STI1MUSA1M	GH1	–	Titanium Grade 5
STI1MUSA3M	GH3	–	Titanium Grade 5
STI1MUSA5M	GH5	–	Titanium Grade 5



MULTI UNIT ANGLED ABUTMENT MINI

Ref No	Size (L)	Ø	Material
STI1MUANA201M	GH1 20°	–	Titanium Grade 5
STI1MUANA203M	GH3 20°	–	Titanium Grade 5
STI1MUANA205M	GH5 20°	–	Titanium Grade 5
STI1MUANA351M	GH1 35°	–	Titanium Grade 5
STI1MUANA353M	GH3 35°	–	Titanium Grade 5
STI1MUANA355M	GH5 35°	–	Titanium Grade 5



MULTI UNIT HEALING ABUTMENT MINI

Ref No	Size (L)	Ø	Material
STI1MUHLA	–	–	Titanium Grade 5



MULTI UNIT OPEN TRAY TRANSFER COPING MINI

Ref No	Size (L)	Ø	Material
STI1MUITIH (Hex)	–	–	Titanium Grade 5
STI1MUITI (Non-Hex)	–	–	Titanium Grade 5





MULTI UNIT CLOSED TRAY TRANSFER COPING MINI

Ref No	Size (L)	Ø	Material
STI1MUITIC	-	-	Titanium Grade 5



TEMPORARY ABUTMENT MINI

Ref No	Size (L)	Ø	Material
STI1MUTAH (Hex)	-	-	Titanium Grade 5
STI1MUTA (Non-Hex)	-	-	Titanium Grade 5



MULTI UNIT CASTABLE ABUTMENT MINI

Ref No	Size (L)	Ø	Material
STI1MUDAH (Hex)	-	-	Pom C-Delrin
STI1MUDA (Non-Hex)	-	-	Pom C-Delrin



MULTI UNIT Ti-BASE ABUTMENT MINI

Ref No	Size (L)	Ø	Material
STIMTBASE	-	-	Titanium Grade 5





MULTI UNIT STRAIGHT ANALOG MINI

Ref No	Size (L)	Ø	Material
STI1MUILAH (Hex)	-	-	Titanium Grade 5
STI1MUILA (Non-Hex)	-	-	Titanium Grade 5



MULTI UNIT ANGLED 20° - 35° ANALOG MINI

Ref No	Size (L)	Ø	Material
STI1MUILAA20	-	-	Titanium Grade 5
STI1MUILAA35	-	-	Titanium Grade 5



MULTI DIGITAL ANALOG MINI

Ref No	Size (L)	Ø	Material
STIDGAMULTI	-	-	Titanium Grade 5



MULTI UNIT CARRIER PART MINI

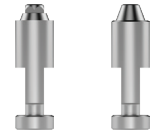
Ref No	Size (L)	Ø	Material
STI1MUYP	-	-	Titanium Grade 5





MULTI UNIT STRAIGHT ANALOG MINI

Ref No	Size (L)	Ø	Material
STIMSCP	-	-	Titanium Grade 5



EXOCAD SCAN BODY

Ref No	Size (L)	Ø	Material
STIESCANL (Large)	-	-	Pom C-Delrin
STIESCANS (Small)	-	-	Pom C-Delrin



IMPLANT SCAN BODY

Ref No	Size (L)	Ø	Material
STISCANPUM	-	-	Titanium Grade 5
STISCANPM	-	-	Titanium Grade 5



CEREC SCAN BODY

Ref No	Size (L)	Ø	Material
STITSCANL (Large)	-	-	ABS
STITSCANS (Small)	-	-	ABS





DENTAL DRILL

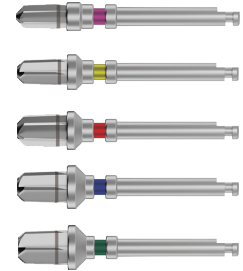
Ref No	Ø	Material
STIDLADR (Lance Drill)	–	Stainless Steel
STIFAG23	Ø2.3 AG	Stainless Steel
STIFAG30	Ø3.0 AG	Stainless Steel
STIFAG35	Ø3.5 AG	Stainless Steel
STIFAG40	Ø4.0 AG	Stainless Steel
STIFAG45	Ø4.5 AG	Stainless Steel
STIFAG50	Ø5.0 AG	Stainless Steel





CORTICAL DENTAL DRILL

Ref No	Ø	Material
STIFAG30C	Ø3.0 AG	Stainless Steel
STIFAG35C	Ø3.5 AG	Stainless Steel
STIFAG40C	Ø4.0 AG	Stainless Steel
STIFAG45C	Ø4.5 AG	Stainless Steel
STIFAG50C	Ø5.0 AG	Stainless Steel



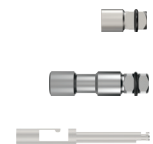
DRIVERS

Ref No	Ø	Material
Driver 1.2 S	STIDR12S	Stainless Steel
Driver 1.2 L	STIDR12L	Stainless Steel
Driver Torque 1.2 S	STIDT12S	Stainless Steel
Driver Torque 1.2 L	STIDR12L	Stainless Steel



EXTENSIONS

Name	Ref No	Material
Mount Extension S	STIDMEXS	Stainless Steel
Mount Extension L	STIDMEXL	Stainless Steel
Drill Extension	STIDDREX	Stainless Steel





MOUNT DRIVERS

Name	Ref No	Material
Mount Driver S	STIDMODS	Stainless Steel
Mount Driver L	STIDMODL	Stainless Steel



PARALEL PIN

Name	Ref No	Material
Parallel Pin	STIDPLP4	Stainless Steel
Parallel Pin Angled 20°	STIDPLP20	Stainless Steel
Parallel Pin Angled 35°	STIDPLP35	Stainless Steel



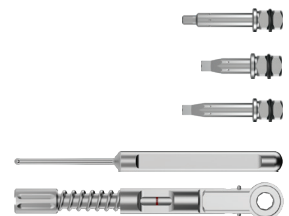
REMOVAL TOOLS

Name	Ref No	Material
Removal Tool Ultra Mini	STIDRTOUM	Stainless Steel
Removal Tool Mini	STIDRTOM	Stainless Steel



FIXTURE DRIVERS

Name	Ref No	Material
Fixture Driver Ultra Mini	STIDFDRUM	Stainless Steel
Fixture Driver Mini S	STIDFDRMS	Stainless Steel
Fixture Driver Mini L	STIDFDRML	Stainless Steel
Depth Gauge	STIDDEPTH	Stainless Steel
Ratchet	STIDRACHT	Stainless Steel



Bovine Collagen Membrane

BIOSTI Bovine Collagen Membrane is extracted from the bovine pericardium and is sterilized using gamma radiation. It is used for the strengthening, regeneration and replacement of connective tissues.

BIOSTI Bovine Collagen Membrane initially covers the tissue defect safely and acts as a template for the cellular repair mechanism that replaces the structure with the body's own natural tissues.



Membrane

15x20 mm

20x30 mm

30x40 mm

Bovine Bone Graft

BIOSTI Bovine Bone Graft is obtained from the bovine cancellous bone and is subjected to gamma sterilisation and preserved in a solvent. BIOSTI Bovine Bone Graft is used to fill bone defects, for establishing stabilisation and for plastic reconstruction of an extracted or damaged bone section.



Cancellous - Cortical

0.5 cc	1 cc	2 cc	5 cc
0.5 cc	0.25 - 1 mm	0.25 - 1 mm	0.25 - 1 mm
1 - 2 mm	1 - 2 mm	1 - 2 mm	1 - 2 mm

*Halal certified.

Bio  **STI**

Swiss Technology of
Implantology and
Biomaterials

Provides life time guarantee for implants



Bio  STI

Swiss Technology of Implantology and Biomaterials GmbH

Zelgstrasse 29 Tifers,
Freiburg, 1712 Switzerland

www.biosti.ch
info@biosti.ch