



# WARRIORS IN TUNE

January 2022

Website: [washingtonbands.org](http://washingtonbands.org)

Donation Site: follow links on home page at [WashingtonBands.org](http://WashingtonBands.org)  
<https://www.facebook.com/WashingtonHighSchoolBandsSiouxFallsSd>

## UPCOMING SCHEDULE

**Monday, January 3** – School resumes – remember to bring your instruments!

**Monday, January 10** – Band Parent Booster Mtg – 7pm in WHS Band Room

**Wednesday, January 12 & Thursday, January 13** – Semester Tests

**Friday, January 14 & Monday, January 17** – No School

**Saturday, January 29** – All State Band Auditions at Lincoln High School (selected students)

**Monday, February 14** – Band Booster Mtg – 7pm in WHS Band Room

**Thursday, February 17** – Prism Band Concert at 7pm in WHS Auditorium

**Friday, February 25** – deadline for current WHS students to submit upper band audition recording (see director's note)

## DONATIONS

Account Donations are accepted at any time or can be turned in with a fundraiser.

\*\*Donations may be turned in at school in an envelope marked with student's name & account donation, place in the black box in practice room hallway\*\*

\*\*Donations turned in with a fundraiser, place in an envelope marked donation\*\*

## Director Notes

WHS Band Students and Parents,

We hope you had a very merry holiday season.

As we wrap up the last two weeks of the first semester our biggest focus is preparing your students for semester tests and preparing select students for All State Band auditions. Semester test days are January 12 and 13. All State Band Auditions occur at Lincoln High School on Saturday, January 29.

January is also when students will begin thinking about what courses they will take next fall as registration is fast approaching. It is important to make sure that band is in your student's schedule for next semester and next year! Students at Washington and at our feeder middle schools have received the music for upper band auditions for the 2022-2023 school year. For Washington students, these auditions are to be recorded (either at home or in class) and sent to Ms. Coyne by **February 25** either by email or in our Google Classroom. No exceptions! There is no audition requirement for Freshman Band or Varsity Band – only those wanting to participate in Concert Band or Symphonic Band. We will give the students several class days to work on this audition and ask questions, but it will be their responsibility to get it recorded and turned in on time. Of course, both directors are always available to help.

For now, on registration day, students can just sign up for the band they are currently in and get it changed later. Student currently in Freshman Band should register for Varsity Band. Class changes and class-hour changes are easily manageable with some communication to the band directors and counselors. We will take care of all band class changes once results are posted for next year. Please let us know if something does not work in your schedule and we will get it figured out.

A friendly reminder that payments for our big Orlando trip are due on the 1st of every month (January, February, March, and last payment in April). Your student must have their trip money paid before we leave. Also, save the date! The **Prism Concert is Thursday, February 17**. We hope you can join us for this extraordinary concert as it features every band at WHS, including our Jazz Bands, and several soloists and small ensembles. More information about this concert will be out in the next newsletter.

Thank you and Happy New Year!

~Kiley Coyne and Ben Harder

**WHS Music Contact** Office Phone 367-7976  
To leave a message for Band, press 1

Head Director— Kiley Coyne ([kiley.coyne@k12.sd.us](mailto:kiley.coyne@k12.sd.us))  
Asst. Director— Ben Harder ([benjamin.harder@k12.sd.us](mailto:benjamin.harder@k12.sd.us))

# Orlando Band Rehearsal Schedule

Tuesday, January 18

Tuesday, January 25

Tuesday, March 8

Tuesday, March 22

Tuesday, March 29

Tuesday, April 5

**\*All rehearsals will be from 3:30 to 5:00pm in the WHS Auditorium\***

As a member of the Orlando travel band it is an expectation for students traveling to Orlando to attend each rehearsal. Please have your student ask off from their jobs, plan social and family events so they don't conflict with rehearsals. If there are extenuating circumstances causing a conflict please discuss with the director in advance.

## HELP US SPREAD THE WORD...

Attention Warriors near and far! We want to have a list of band members to keep for posterity from the very beginning of Sioux Falls High School/ Central High School/ Washington High School to today. We'd also like a way for us to keep in contact with the alumni, friends and family of the Washington High School Bands in Sioux Falls, SD.

Please click on the link to complete our form or email [whssfbands@gmail.com](mailto:whssfbands@gmail.com) to give us your contact information and graduation year.

Complete the form for yourself share the link with any friends you know who have a connection to the Warrior Band Program! <https://forms.gle/ToHb5PviXfjvPq6d7>



THANK YOU to a WHS Band alumni trumpet player for providing a scholarship to a WHS Band student for this year! It is a beautiful gift that the Warrior band legacy provides a positive impact on students today.

If you want to join the giving and provide a scholarship to a student in need, please visit <https://whs-bands-sioux-falls.square.site/warrior-band-scholarship-program-details> Some donors have opted to give a one student, one year marching band scholarship for \$168 in honor of someone who has made a positive impact in their life.

Scholarship donations can be given for any amount as students have varied needs.



# Fundraising Opportunities

There are many opportunities throughout the year (including during the summer months) to raise funds for the band and for your individual student's fundraising account. Here are the upcoming and ongoing fundraisers:

**HY-VEE CARDS** – Earn funds when buying your groceries! That's right – you can earn fundraising money just by purchasing Hy-Vee cards to fund your regular grocery store shopping. The form and more information are at the end of this newsletter and available on our website at [washingtonbands.org/hy-vee](http://www.washingtonbands.org/hy-vee). Hy-Vee cards are also sold at Band Booster meetings, band concerts and other events.

**INTERSTATE BATTERIES** – We have packs of 24 – AA & AAA batteries available. The packs sell for \$15 each and the students receive a profit of \$9-\$10 on 1) each pack sold. The battery form is available online and batteries are sold at Band Booster meetings, Band concerts and other events.

**SCRIP CARDS** – WHS Band Boosters orders gift cards at a discount. Families pay face value for the cards and the difference is an instant rebate for your student's fundraising account. Instructions for placing a Scrip order are available on the band website: <http://www.washingtonbands.org/fundraising.html> - Click on the 'Learn More' button under the Shop with Scrip section.

## DONATIONS

Donations to the Washington High School Band program are always welcome. A donation may be designated to a specific student, to the general scholarship fund to support families who struggle to reach fundraising goals, or go to the band general fund. To give securely online visit [washingtonbands.org](http://washingtonbands.org) and click on the Support the Band. **Remember...WHS Band Boosters is a 501c3 organization so gifts to the general fund or general scholarship fund could be tax-deductible.** Make a donation at the [WHS BAND WEBSITE](#).

**\*\*\*REMEMBER TO USE THE RaiseRight by ShopWithScrip app\*\*\***

**[see details on page 4 of this newsletter]**



## Shop with Scrip Testimony from band parent, Amy Benda

We placed our first Shop with Scrip order in September of 2017 when our daughter was a freshman at WHS. She has since graduated but we continue using it for our son who is a sophomore. In 4 years and 3 months our family has earned \$860.49 through Shop with Scrip for our students' band accounts. How did we do it? Easy, by using Shop with Scrip to purchase gift cards for places where we would already be spending money. The opportunities are endless with over 750 brands/stores available to select from. But here are a few examples of how our family has used the program...

- 1) Amazon – yes, I'm an Amazon shopper. Since we started using Shop with Scrip I haven't paid for any purchases through Amazon by using a debit or credit card. I order e-cards from Shop with Scrip and load it right onto my Amazon account.
- 2) When we needed new kitchen appliances for our home we purchased them at Best Buy. By utilizing e-cards from Shop with Scrip we raised \$166 for our student's band account.
- 3) As my husband has purchased enhancements for his shop we utilized e-cards from Home Depot and have raised \$68.
- 4) I love shopping at Bath & Body works (especially for gifts for others) – I recently capitalized on a Bonus Rebate and raised \$28.50 thanks to a 19% rebate on the \$150 e-card I purchased.
- 5) We have also purchased gift cards at several restaurants, clothing stores, movie theater, Starbucks (I load it right onto my Starbucks app for easy use), Wal-Mart, etc.

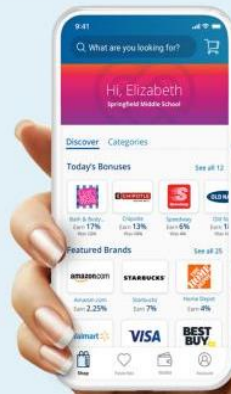
It's so easy with the RaiseRight app – you can track your balance or use e-cards directly from the app. Please see page 4 of this newsletter for more information. Or connect with our Shop with Scrip coordinator, Linda Weidner by emailing her at [wideman@sio.midco.net](mailto:wideman@sio.midco.net).

## REMINDER - ALL PARENTS WELCOME!

Band Parent Booster Meetings are the 2<sup>nd</sup> Monday of each month at 7:00pm.

All meetings are held in the WHS Band Room!

# Simply the Right Way to Fundraise



## The new RaiseRight™ mobile app makes fundraising easier

Shop gift cards from more than 750 top brands—right from your phone. Whether you're at home or at the store. Get started with on-the-go fundraising that creates opportunities for the people that matter most to you.

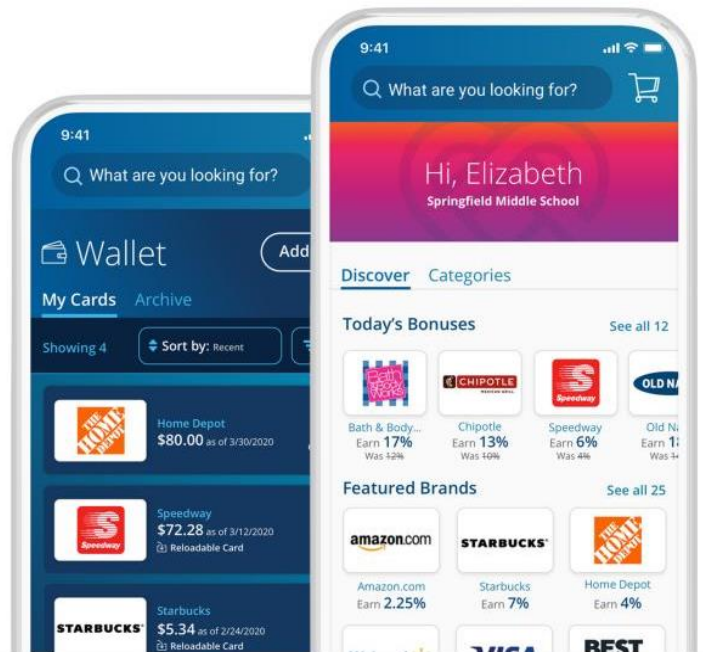
Narrow your search with categories that fit your everyday shopping needs

Discover new earning opportunities every day

Easily browse brands offering bonus earnings

Add brands you love to your Favorites for faster shopping

Manage your gift cards in one place: your Wallet



### Already have a ShopWithScrip account? Pick up right where you left off.

- Use the same sign-in information
- Your gift cards and payment information automatically transfer to the app



Get the app  
[www.RaiseRight.com](http://www.RaiseRight.com)



# ORLANDO TRIP PAYMENT INFORMATION

The following information is only for sophomore, junior senior families who have a student traveling to Orlando in April 2022. The payment plan listed below was communicated by email to participating families in late July. If you have any questions, please contact Mrs. Coyne. The total cost of the trip is \$1590 per student.

## Payment Plan Due Date

Initial (non-refundable) Deposit:  
\$200 May 15<sup>th</sup> (done)

Payment 2: \$200 September 1

Payment 3: \$200 October 1

Payment 4: \$200 November 1

Payment 5: \$200 December 1

Payment 6: \$200 January 1

Payment 7: \$200 February 1

Payment 8: \$190 March 1

If your student has funds available from fundraising efforts in their student band account you can easily make trip payments through a transfer request on Charms.

Follow these steps:

Go to [www.charmsoffice.com](http://www.charmsoffice.com)

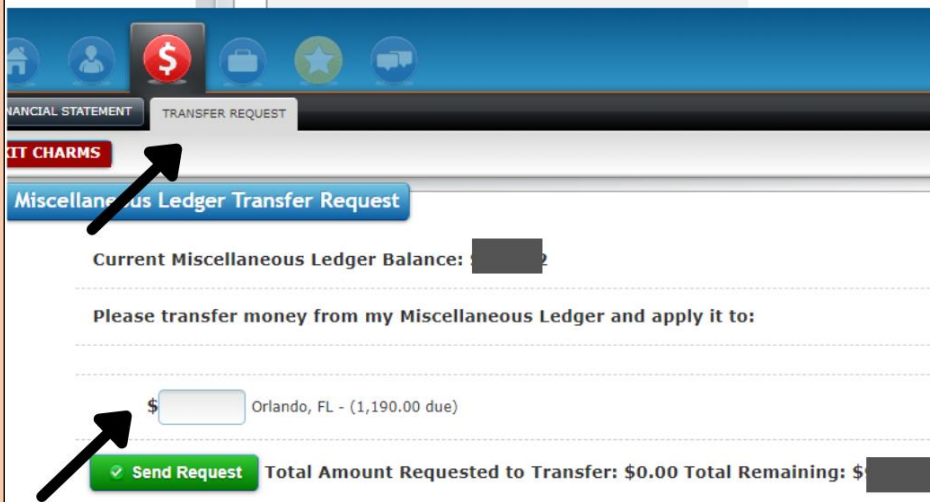
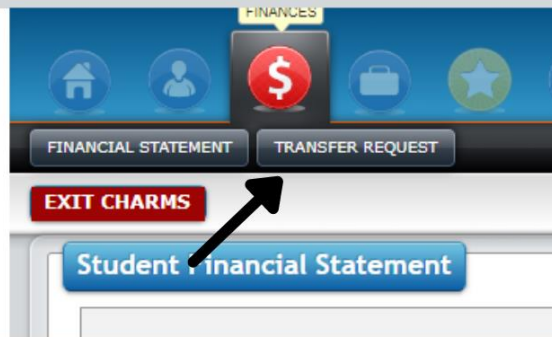
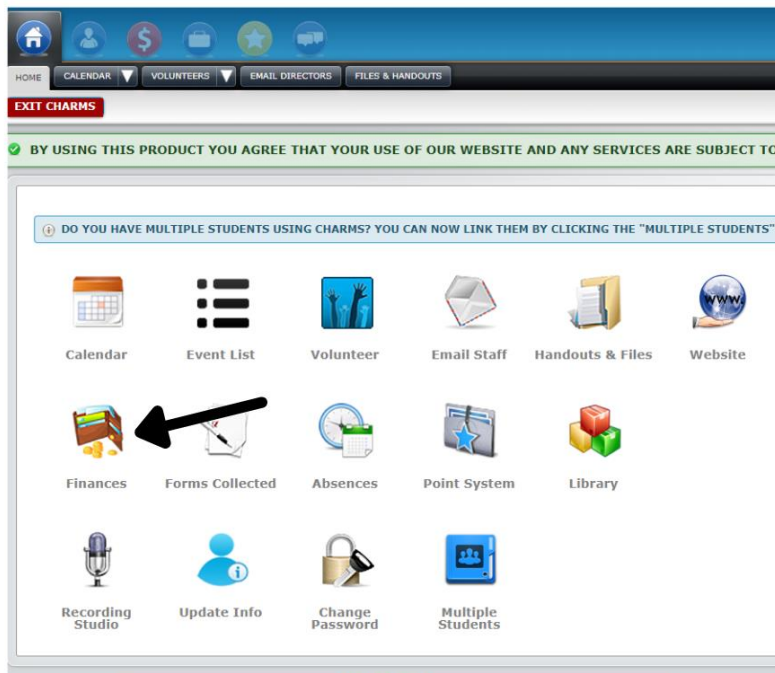
Log into your account (contact Kiley Coyne or Jan Questad if you need assistance with log in credentials).

Click on Finances icon (see screen shot to the right)

Click on Transfer request (see screen shot to the right)

Complete transfer request click Send Request.

You will receive an email confirming the request was submitted successfully.



# WHS Band Hy-Vee Card On-Going Fundraiser

Hy-Vee Card **ORDERS** are due the first and third Monday of each month (Tuesday if Monday holiday).

Hy-Vee card orders (clearly label as Hy-Vee order) should be left in the designated envelope in the band room at the time your student has class or mailed/delivered to **Dawn Taborda, 3201 E Madison Street, Sioux Falls, SD 57103** up until 8pm on due date. During summer months, all orders must be mailed/delivered to Dawn Taborda.

Hy-Vee Card **PICK-UP** is on the Thursday of the order week (Tuesday on Thanksgiving week).

Hy-Vee cards can be picked up from 6:30 – 7:00 PM at **3201 E Madison Street, Sioux Falls, SD 57103**. If you will be unable to pick up your order at this time contact me at **321-0607 (cell)** or email me at **dawnmomx4@aol.com** to arrange another time. Pick-up will be at the school if a Band Concert or band event is occurring on the scheduled pick-up night.

Hy-Vee Cards will also be available for purchase at Band Booster meetings, Band Concerts and other band events.

---

## WHS BAND HY-VEE CARD ORDER FORM

Date \_\_\_\_\_ Student Name \_\_\_\_\_

Parent/Guardian Name \_\_\_\_\_

Phone # \_\_\_\_\_ Email address: \_\_\_\_\_

\*Payment must accompany the order blank, **Checks only please.**

\*Make checks **payable to WHS Band.**

Select dollar amount you wish to purchase (\$105, \$210, \$420, \$525, \$630, \$840 or \$1050),  
fill in denominations desired and record check #

	Amount ordered	\$10	\$25	\$50	\$100	Check #
Hy-Vee	Total due \$105 (You will get \$105 in Hy-Vee cards + \$5 into student account)					
Hy-Vee	Total due \$210 (You will get \$210 in Hy-Vee cards + \$10 into student account)					
Hy-Vee	Total due \$420 (You will get \$420 in Hy-Vee cards + \$20 into student account)					
Hy-Vee	Total due \$525 (You will get \$525 in Hy-Vee cards + \$25 into student account)					
Hy-Vee	Total due \$630 (You will get \$630 in Hy-Vee cards + \$30 into student account)					
Hy-Vee	Total due \$840 (You will get \$840 in Hy-Vee cards + \$40 into student account)					
Hy-Vee	Total due \$1050 (You will get \$1050 in Hy-Vee cards + \$50 into student account)					