



WARRIORS IN TUNE

February 2022

Website: [washingtonbands.org](http://www.washingtonbands.org)

Donation Site: follow links on home page at WashingtonBands.org
<https://www.facebook.com/WashingtonHighSchoolBandsSiouxFallsSd>

UPCOMING SCHEDULE

Monday, February 7 – Band Booster Mtg – 7pm in WHS Band Room – **NOTE DATE ONE WEEK EARLIER DUE TO CONFERENCES ON THE 2ND MONDAY**

Monday, February 14 – Conferences at WHS – 4pm to 7:30pm

Friday, February 11 – Jazz 1 & 2 ONLY – Morningside Competition in Sioux City, IA.

Thursday, February 17 – Prism Band Concert at 7pm in WHS Auditorium

Monday, February 21 & Tuesday, February 22 – No School

Friday, February 25 – deadline for current WHS students to submit upper band audition recording

Friday – Saturday, February 25-26 – Jazz 1 & 2 ONLY – Omaha Jazz Festival (overnight)

Tuesday, March 1 – All State Jazz Band materials due

Monday, March 14 – Band Booster Mtg – 7pm in WHS Band Room

DONATIONS

Account Donations are accepted at any time or can be turned in with a fundraiser.

Donations may be turned in at school in an envelope marked with student's name & account donation, place in the black box in practice room hallway

Donations turned in with a fundraiser, place in an envelope marked donation

Director Notes

Dear WHS Band Families,

February is an extremely busy month for the WHS Band. First, we hope many of you will attend our Prism Concert on Thursday, February 17 at 7:00PM. This is a truly unique concert and is a WHS tradition. It features soloists, duets, small group ensembles, and every large instrument group we have (concert and Jazz) in a blacked-out auditorium. Students are placed in different sections of the stage with a spotlight rolling between each performance space to highlight the many talents of our band program. We still need one more parent volunteer willing to help with lights. Sign up via the Signup Genius on page 2 of this newsletter!

This month, our Jazz students will also be competing at two competitions. Friday, February 11 is our first competition at Morningside in Sioux City. Jazz II performs at 8AM and Jazz I performs at 10:30AM. After our performances we will stop somewhere in Sioux City for lunch and then return to WHS in time for 7th period. Students need to be at **WHS at 6:30AM on Friday, February 11** to load the bus! Parents are allowed to spectate these events.

We also have our Jazz overnight in Omaha, NE this year on Thursday - Friday, February 24-25. An itinerary was sent out for this event and Jazz students need to contribute \$55.00 towards this overnight trip for hotel and catered meals throughout the weekend. We are excited to showcase all the work our Jazz students have done this year so far in these great competition opportunities!

Also, beginning last week, your students have started going through the registration process for 2022-2023 classes. We hope all your students put band in their schedules! At the end of the month, we will hear the current students and incoming 8th graders play their audition music so that they may be placed in a band where they will thrive. Results will be released early March and we will contact counselors to get students placed correctly. For now, we just tell students to register for the band they are in currently (except Freshman Band should register for Varsity Band). Jazz Band auditions will take place in late March.

Lastly, after the Prism Concert is our annual announcement of the new fall 2022 marching band show. This announcement kicks off our Drum Major auditions and the release of our Marching Band Commitment Forms as well which will be due in April. WHS has an **All-Activities Night on March 22, 2022, at WHS at 6:00PM**. Here, there will be breakout sessions where you and your students can attend short meetings for activities that interest you. At the band breakout session, we will discuss marching band and color guard and everything you need to know about being a member of this great group.

We thank you for your continued support of music education. Stay healthy!

Sincerely, Kiley Coyne and Ben Harder

WHS Music Contact Office Phone 367-7976
To leave a message for Band, press 1

Head Director— Kiley Coyne (kiley.coyne@k12.sd.us)
Asst. Director— Ben Harder (benjamin.harder@k12.sd.us)

PRISM CONCERT VOLUNTEER SIGN UP LINK

<https://www.signupgenius.com/go/409084eacab28a4fa7-prism2>

Middle School night at Pep Band: **Tuesday, February 8th Middle School** students will have the opportunity to play along with the high school students during a WHS Girls Basketball game. Students should arrive by 5:30pm for pizza followed by a brief rehearsal at 6:00pm. Students can be picked up after the halftime performance at approximately 7:45pm.

HELP US SPREAD THE WORD...

Attention Warriors near and far! We want to have a list of band members to keep for posterity from the very beginning of Sioux Falls High School/ Central High School/ Washington High School to today. We'd also like a way for us to keep in contact with the alumni, friends and family of the Washington High School Bands in Sioux Falls, SD.

Please click on the link to complete our form or email whssfbands@gmail.com to give us your contact information and graduation year.

Complete the form for yourself share the link with any friends you know who have a connection to the Warrior Band Program! <https://forms.gle/ToHb5PviXfjvPq6d7>



THANK YOU to a WHS Band alumni trumpet player for providing a scholarship to a WHS Band student for this year! It is a beautiful gift that the Warrior band legacy provides a positive impact on students today.

If you want to join the giving and provide a scholarship to a student in need, please visit <https://whs-bands-sioux-falls.square.site/warrior-band-scholarship-program-details> Some donors have opted to give a one student, one year marching band scholarship for \$168 in honor of someone who has made a positive impact in their life.

Scholarship donations can be given for any amount as students have varied needs.



Fundraising Opportunities

There are many opportunities throughout the year (including during the summer months) to raise funds for the band and for your individual student's fundraising account. Here are the upcoming and ongoing fundraisers:

STENSLAND - We will begin the Stensland fundraiser on February 2. Students will be selling punch cards for ice cream and treats as well as products including cheese, pizza, preserves, cheese curds, gift boxes, and more. Check in with your favorite WHS Band student for a delicious, fresh, local way to support the band!

HY-VEE CARDS – Earn funds when buying your groceries! That's right – you can earn fundraising money just by purchasing Hy-Vee cards to fund your regular grocery store shopping. The form and more information are at the end of this newsletter and available on our website at [washingtonbands.org/hy-vee](http://www.washingtonbands.org/hy-vee). Hy-Vee cards are also sold at Band Booster meetings, band concerts and other events.

INTERSTATE BATTERIES – We have packs of 24 – AA & AAA batteries available. The packs sell for \$15 each and the students receive a profit of \$9-\$10 on 1) each pack sold. The battery form is available online and batteries are sold at Band Booster meetings, Band concerts and other events.

SCRIP CARDS – WHS Band Boosters orders gift cards at a discount. Families pay face value for the cards and the difference is an instant rebate for your student's fundraising account. Instructions for placing a Scrip order are available on the band website: <http://www.washingtonbands.org/fundraising.html> - Click on the 'Learn More' button under the section.

DONATIONS

Donations to the Washington High School Band program are always welcome. A donation may be designated to a specific student, to the general scholarship fund to support families who struggle to reach fundraising goals, or go to the band general fund. To give securely online visit washingtonbands.org and click on the Support the Band. **Remember...WHS Band Boosters is a 501c3 organization so gifts to the general fund or general scholarship fund could be tax-deductible.** Make a donation at the [WHS BAND WEBSITE](#).



*****REMEMBER TO USE THE RaiseRight by ShopWithScrip app*****
[see details on page 4 of this newsletter]

Upcoming Orlando Band Rehearsal Schedule

Tuesday, March 8

Tuesday, March 22

Tuesday, March 29

Tuesday, April 5

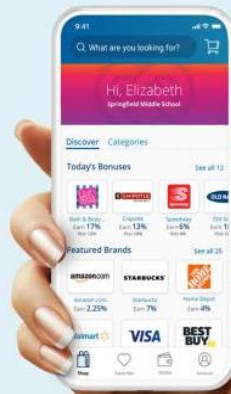
All rehearsals will be from 3:30 to 5:00pm in the WHS Auditorium

As a member of the Orlando travel band it is an expectation for students traveling to Orlando to attend each rehearsal. Please have your student ask off from their jobs, plan social and family events so they don't conflict with rehearsals. If there are extenuating circumstances causing a conflict please discuss with the director in advance.

REMINDER - ALL PARENTS WELCOME!

Band Parent Booster Meetings are the 2nd Monday of each month at 7:00pm
(but not in February – the February meeting is the 1st Monday)
All meetings are held in the WHS Band Room!

Simply the Right Way to Fundraise



The new RaiseRight™ mobile app makes fundraising easier

Shop gift cards from more than 750 top brands—right from your phone. Whether you're at home or at the store. Get started with on-the-go fundraising that creates opportunities for the people that matter most to you.

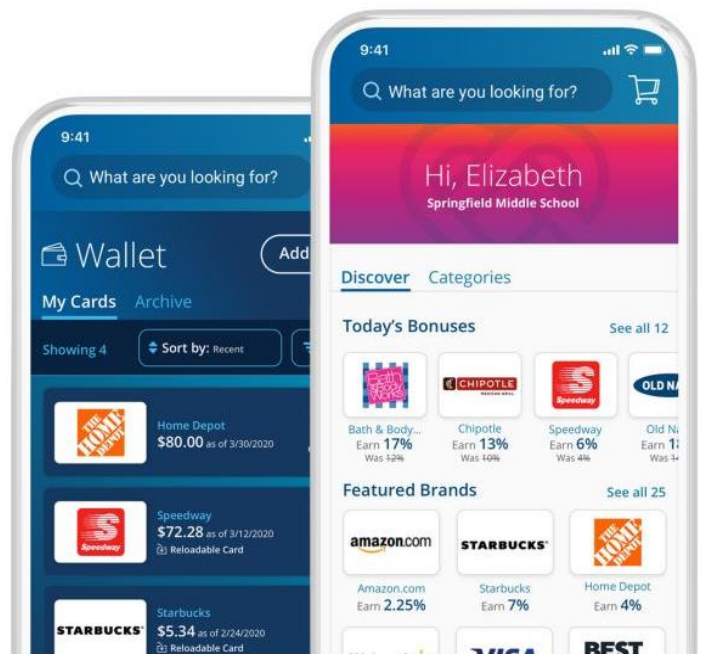
Narrow your search with categories that fit your everyday shopping needs

Discover new earning opportunities every day

Easily browse brands offering bonus earnings

Add brands you love to your Favorites for faster shopping

Manage your gift cards in one place: your Wallet



Already have a ShopWithScrip account? Pick up right where you left off.

- Use the same sign-in information
- Your gift cards and payment information automatically transfer to the app



Get the app
www.RaiseRight.com



ORLANDO TRIP PAYMENT INFORMATION

The following information is only for sophomore, junior senior families who have a student traveling to Orlando in April 2022. The payment plan listed below was communicated by email to participating families in late July. If you have any questions, please contact Mrs. Coyne. The total cost of the trip is \$1590 per student.

Payment Plan Due Date

Initial (non-refundable) Deposit:
\$200 May 15th (done)
Payment 2: \$200 September 1
Payment 3: \$200 October 1
Payment 4: \$200 November 1
Payment 5: \$200 December 1
Payment 6: \$200 January 1
Payment 7: \$200 February 1
Payment 8: \$190 March 1

If your student has funds available from fundraising efforts in their student band account you can easily make trip payments through a transfer request on Charms.

Follow these steps:

Go to www.charmsoffice.com

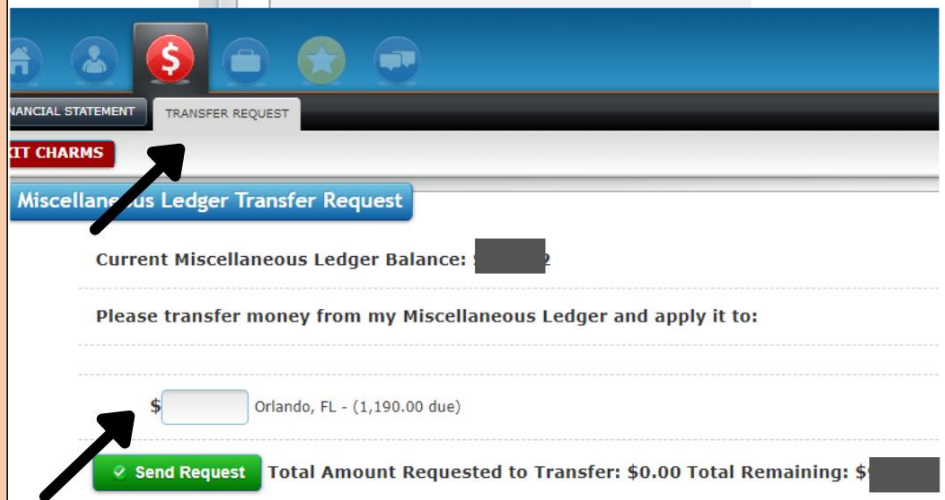
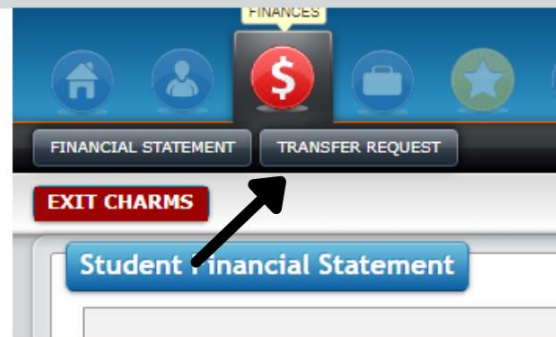
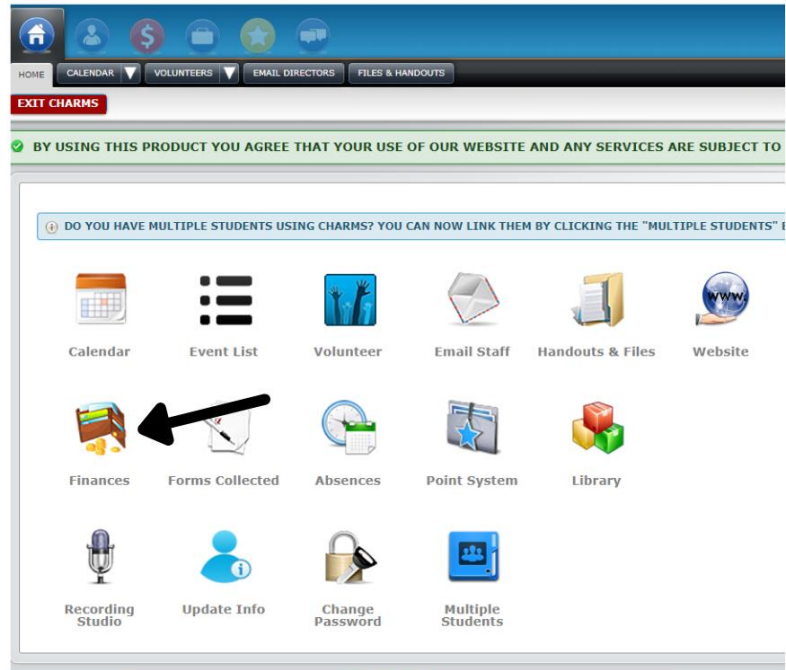
Log into your account (contact Kiley Coyne or Jan Questad if you need assistance with log in credentials).

Click on Finances icon (see screen shot to the right)

Click on Transfer request (see screen shot to the right)

Complete transfer request click Send Request.

You will receive an email confirming the request was submitted successfully.



WHS Band Hy-Vee Card On-Going Fundraiser

Hy-Vee Card **ORDERS** are due the first and third Monday of each month (Tuesday if Monday holiday).

Hy-Vee card orders (clearly label as Hy-Vee order) should be left in the designated envelope in the band room at the time your student has class or mailed/delivered to **Dawn Taborda, 3201 E Madison Street, Sioux Falls, SD 57103** up until 8pm on due date. During summer months, all orders must be mailed/delivered to Dawn Taborda.

Hy-Vee Card **PICK-UP** is on the Thursday of the order week (Tuesday on Thanksgiving week).

Hy-Vee cards can be picked up from 6:30 – 7:00 PM at **3201 E Madison Street, Sioux Falls, SD 57103**. If you will be unable to pick up your order at this time contact me at **321-0607 (cell)** or email me at **dawnmomx4@aol.com** to arrange another time. Pick-up will be at the school if a Band Concert or band event is occurring on the scheduled pick-up night.

Hy-Vee Cards will also be available for purchase at Band Booster meetings, Band Concerts and other band events.

WHS BAND HY-VEE CARD ORDER FORM

Date _____ Student Name _____

Parent/Guardian Name _____

Phone # _____ Email address: _____

*Payment must accompany the order blank, **Checks only please.**

*Make checks **payable to WHS Band.**

Select dollar amount you wish to purchase (\$105, \$210, \$420, \$525, \$630, \$840 or \$1050),
fill in denominations desired and record check #

	Amount ordered	\$10	\$25	\$50	\$100	Check #
Hy-Vee	Total due \$105 (You will get \$105 in Hy-Vee cards + \$5 into student account)					
Hy-Vee	Total due \$210 (You will get \$210 in Hy-Vee cards + \$10 into student account)					
Hy-Vee	Total due \$420 (You will get \$420 in Hy-Vee cards + \$20 into student account)					
Hy-Vee	Total due \$525 (You will get \$525 in Hy-Vee cards + \$25 into student account)					
Hy-Vee	Total due \$630 (You will get \$630 in Hy-Vee cards + \$30 into student account)					
Hy-Vee	Total due \$840 (You will get \$840 in Hy-Vee cards + \$40 into student account)					
Hy-Vee	Total due \$1050 (You will get \$1050 in Hy-Vee cards + \$50 into student account)					