

SINGAPORE CHINESE GIRLS' SCHOOL
PRIMARY 4 SCIENCE
2024 Term 1 Weighted Assessment

Term 1 WA

Name: _____ () Date: _____

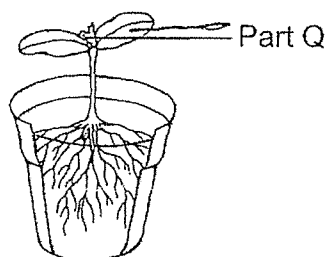
Class: Primary 4 SY / C / G / SE / P

	Marks Attained	Maximum Marks	
Section A		14	
Section B		11	
Total		25	Parent's signature _____

Section A (14 marks)

For each question from 1 to 7, four options are given. One of them is the correct answer.
Choose the correct answer and write its number in the Answer Sheet on Page 5.

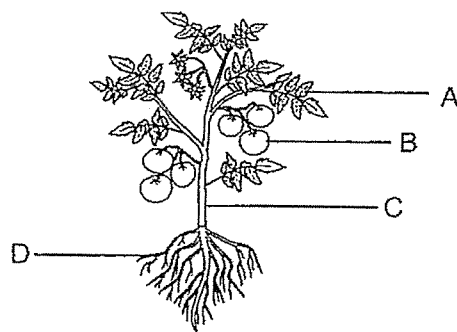
1. The diagram below shows a young plant.



Part Q helps it to _____.

- (1) make food
- (2) stay upright
- (3) anchor firmly onto the ground
- (4) absorb water

2. Observe the plant below. The parts of the plant are labelled A, B, C and D.



Which of the following is correct?

	Holds the plant upright	Takes in and gives out gases
(1)	D	A
(2)	C	A
(3)	D	B
(4)	C	B

3. Three students observed the plant below and gave a statement each.

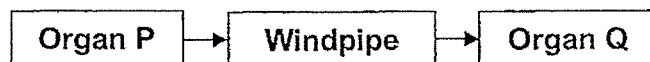


Abby The plant is a flowering plant.
 Bernice: The plant has a weak stem.
 Candy: The plant does not have roots.

Who has/have made the correct statement?

- (1) Abby only
 (2) Candy only
 (3) Abby and Bernice only
 (4) Bernice and Candy only

4. The diagram below shows how air passes through the human respiratory system.



Which of the following identifies Organs P and Q correctly?

	Organ P	Organ Q
(1)	Nose	Heart
(2)	Nose	Lungs
(3)	Mouth	Lungs
(4)	Mouth	Heart

5. The main functions of two body systems are stated below.

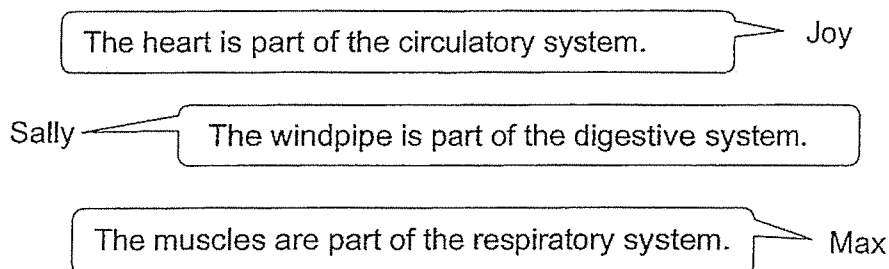
System G: Protects the organs in the body.

System H: Transports digested food to all parts of the body.

Which of the following identifies the systems correctly?

	System G	System H
(1)	Circulatory system	Digestive system
(2)	Skeletal system	Circulatory system
(3)	Skeletal system	Digestive system
(4)	Respiratory system	Circulatory system

6. Three pupils had a discussion on human body systems.



Who is/are correct?

- (1) Joy
 - (2) Sally
 - (3) Joy and Max
 - (4) All of them
7. The following statements describe what happens when food enters our body. However, they are not in the correct order.
- A: Water is absorbed from the undigested food.
 - B: Food goes into the stomach.
 - C: Food is absorbed into the bloodstream.
 - D: Food enters the mouth.

Which one of the following shows the correct order?

- (1) D → B → A → C
- (2) D → C → A → B
- (3) D → A → B → C
- (4) D → B → C → A

SINGAPORE CHINESE GIRLS' SCHOOL
PRIMARY 4 SCIENCE
2024 Term 1 Weighted Assessment

Term 1 WA

Name: _____ () Date: _____

Class: Primary 4 SY / C / G / SE / P

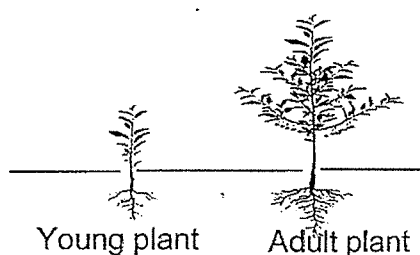
Answer Sheet for Section A

- | | | |
|------------|------------|------------|
| 1. () | 4. () | 7. () |
| 2. () | 5. () | |
| 3. () | 6. () | |

Section B (11 marks)

For Questions 8, 9 and 10, write your answers in the space provided.

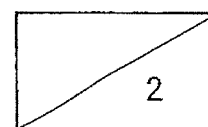
8. Jasmine observed that roots of an adult plant are much longer than that of a young plant.



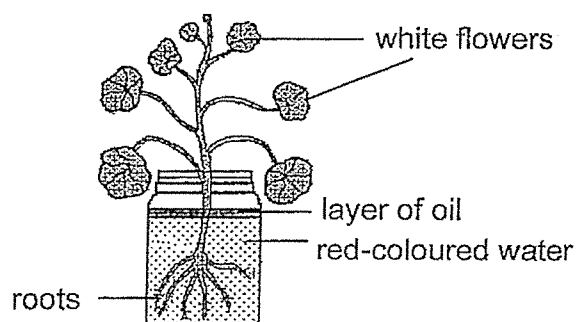
In relation to the function of the roots, state two reasons for her observations. (2m)

Reason 1: _____

Reason 2: _____



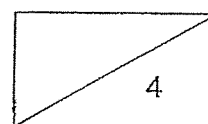
9. Sam placed a plant with white flowers into a beaker of red-coloured water as shown below. He added a layer of oil on top of the red-coloured water.



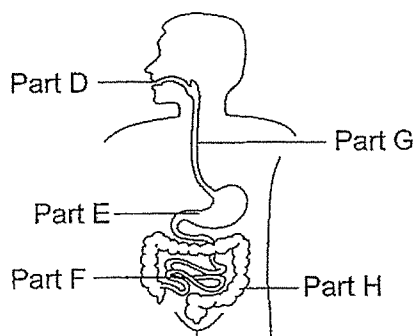
Sam observed the plant after five days.

- (a) The flowers turned red after five days. Explain why it happened. (2m)

- (b) Sam observed that the plant died a few weeks later. Suggest a reason why the plant died. (2m)



10. The diagram below shows the human digestive system.



- (a) State the Part (D, E, F, G or H) where (2m)

(i) digestion first takes place: Part _____

(ii) water from the undigested food is absorbed: Part _____

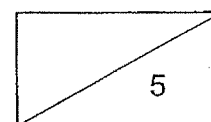
- (b) Read the statements below carefully.

Tick (✓) the correct statements. (2m)

Statements	Correct
Digestion takes place in parts E and G.	
Digested food is absorbed into the bloodstream at part F.	
Digestion takes place in part F.	
Digestion is completed at the part H.	

- (c) State what happens in the mouth that allows the food eaten to be easily swallowed. (1m)

End of Paper
Check your answers.



SCHOOL : SINGAPORE CHINESE GIRLS' SCHOOL
LEVEL : PRIMARY 4
SUBJECT : SCIENCE
TERM : 2024 WA 1

Q1	Q2	Q3	Q4	Q5	Q6	Q7			
1	2	3	2	2	1	4			

8	<p>Reason 1: The roots of the adult plant absorb more water and mineral salts than the roots of the young plant.</p> <p>Reason 2: The roots of the adult plant anchor the plant more firmly to the ground than the roots of the young plant.</p>
9	<p>a) The roots of the plant absorbed the red coloured water to other parts of the plant, and the water carrying tuber in the stem transported the red coloured water to the flowers, turning the flowers red.</p> <p>b) The plants did not have leaves so it could not make food. Hence, the plant died.</p>
10	<p>a) (i) D (ii) H</p> <p>b) digestion food absorbed into the blood stream at part F</p> <p>c) Food is chewed by the teeth</p>

