



Henry Park Primary School  
Primary 4 Science  
2024 Term Review

Duration of Paper: 40 min

Name: \_\_\_\_\_ ( )

Class: Primary 4 \_\_\_\_\_

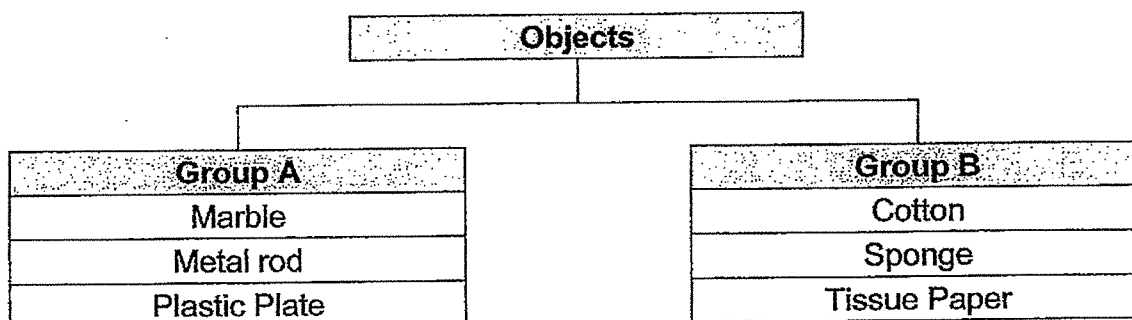
Parent's Signature: \_\_\_\_\_

**Section A: Multiple-Choice Questions**

For each question from 1 to 7, four options are given. One of them is the correct answer. Make your choice (1, 2, 3 or 4) and write the correct answer (1, 2, 3 or 4) in the table provided below.

Q1	Q2	Q3	Q4	Q5	Q6	Q7

- 1 Some objects have been classified into two groups as shown below.



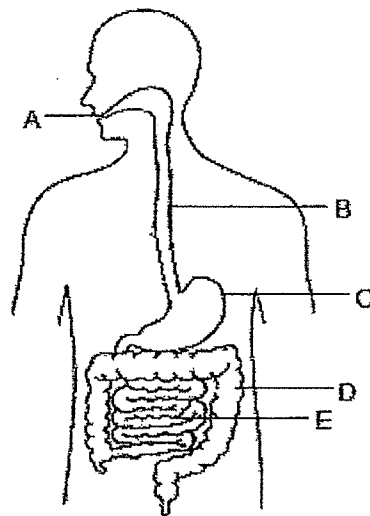
What can the headings for Groups A and B be?

	Group A	Group B
(1)	Flexible	Not flexible
(2)	Does not absorb water	Absorbs water
(3)	Floats in water	Sinks in water
(4)	Allows most light to pass through	Does not allow light to pass through

2 Which statement is correct about most amphibians?

- (1) They have beaks.
- (2) They give birth to their young.
- (3) They have dry skin with scales.
- (4) They can live on land and in water.

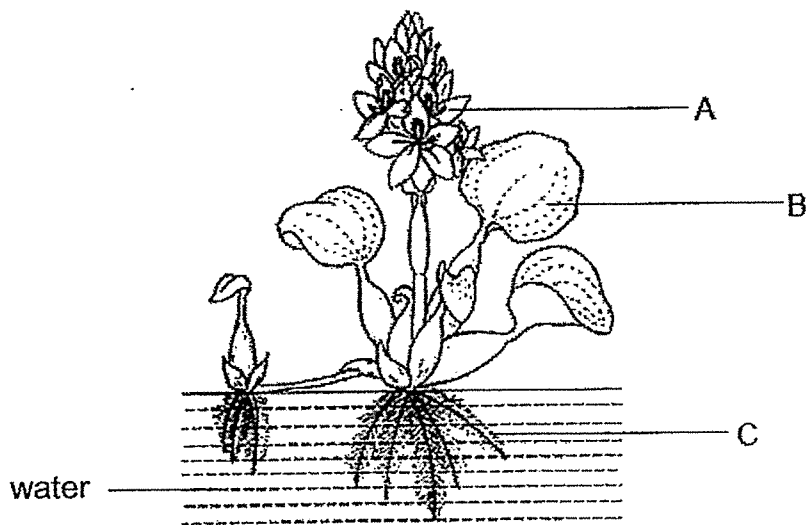
3 The diagram shows the organs, A, B, C, D and E, of the human digestive system.



In which of the organs, A, B, C, D or E, does/do absorption of digested food into the bloodstream take place?

- (1) C only
- (2) E only
- (3) B and D only
- (4) A, C and E only

4 The diagram below shows a floating water plant.



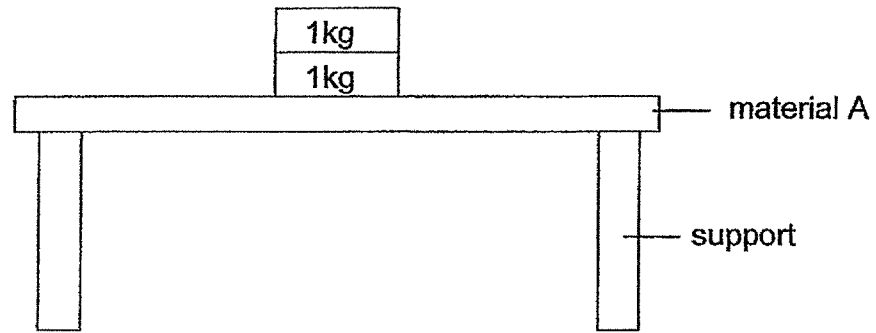
Watten, Xavier and Yanfen, each made a statement below.

- |         |                                      |
|---------|--------------------------------------|
| Watten  | Part A makes food for the plant.     |
| Xavier  | Part B keeps the plant upright.      |
| Yan Fen | Part C takes in water for the plant. |

Whose statement(s) is/are correct?

- (1) Yan Fen only
- (2) Watten only
- (3) Watten and Yan Fen only
- (4) Xavier and Yan Fen only

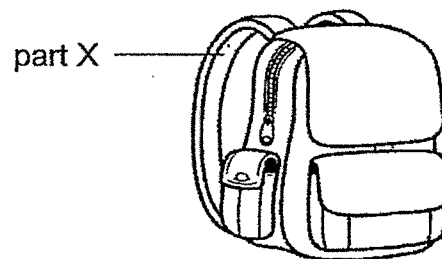
- 5 Jay set up an experiment as shown below. He used four different materials, A, B, C and D, of similar size and thickness.



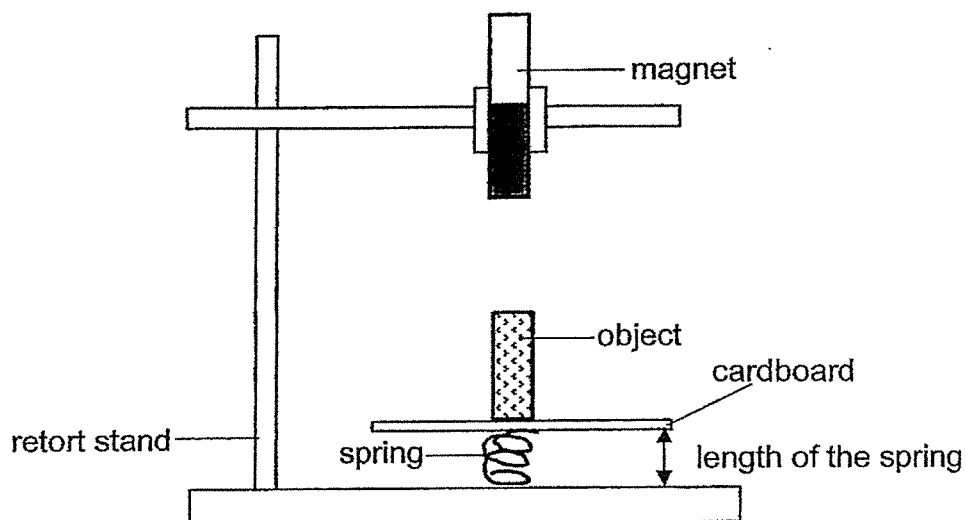
1-kg weight was added one at a time on material A until it breaks. Jay repeated the experiment with materials B, C and D. He then recorded his results in the table below.

Material	Number of 1-kg weight needed to break the material
A	3
B	5
C	9
D	4

Based on the results, which material, A, B, C or D, is most suitable to make part X of a school bag?



- (1) A
- (2) B
- (3) C
- (4) D



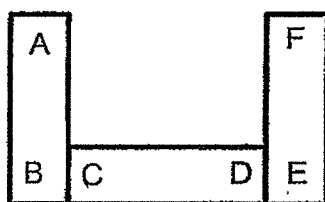
Katelyn used the above set-up to test four different objects, S, T, U and V. The objects were taped onto the piece of cardboard. She recorded her observations below.

Object	Observation of the spring
S	No change in length
T	Length increased
U	Length increased
V	Length decreased

Based on the observations above, what could objects S, T, U and V be?

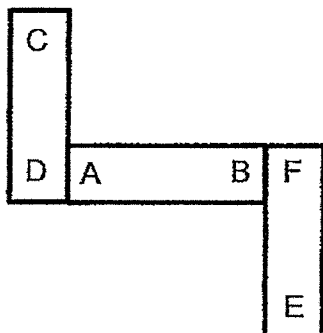
	S	T	U	V
(1)	iron nail	steel bar	magnet	eraser
(2)	eraser	plastic bar	steel bar	magnet
(3)	magnet	steel bar	iron nail	plastic bar
(4)	plastic bar	iron nail	steel bar	magnet

7 Three bar magnets, AB, CD and EF are arranged as shown below.

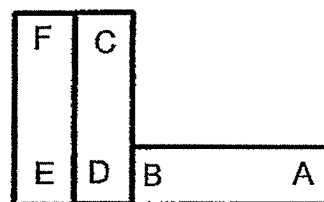


Which of the following shows another possible arrangement of the magnets?

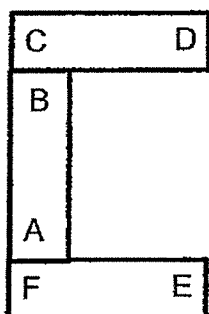
(1)



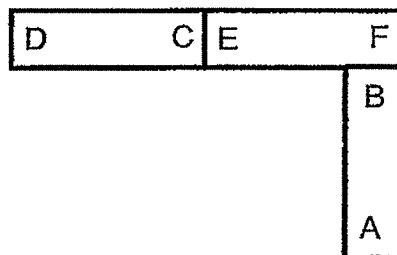
(2)



(3)



(4)



For each question from 8 to 12, write your answers in the spaces given.

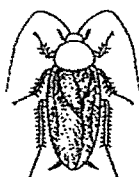
8 Complete the table below. [2]

(a) Classify the following animals into 2 groups using one physical characteristic of the animals.

(b) Write a suitable heading for the group.



butterfly



cockroach

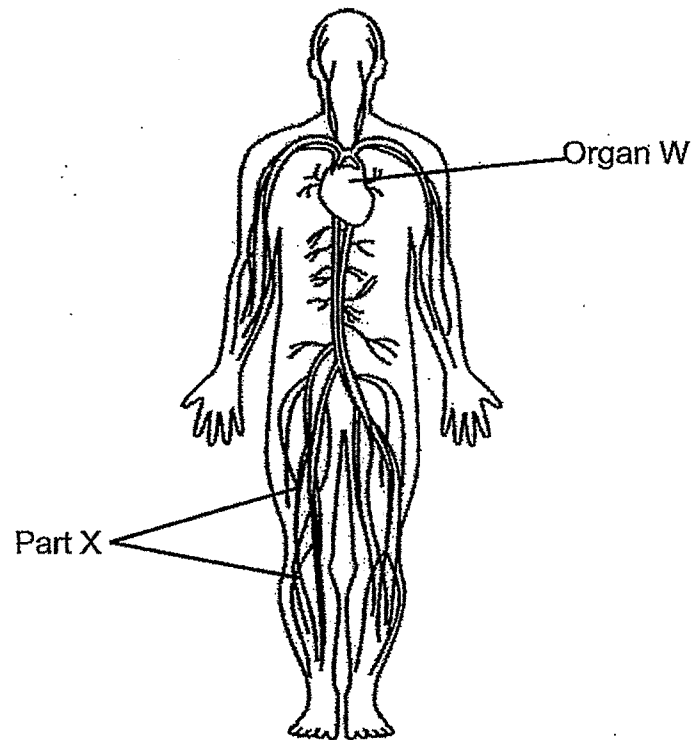


centipede



mosquito

(b) _____	Have more than 6 legs



- (a) Name organ W. [1]

---

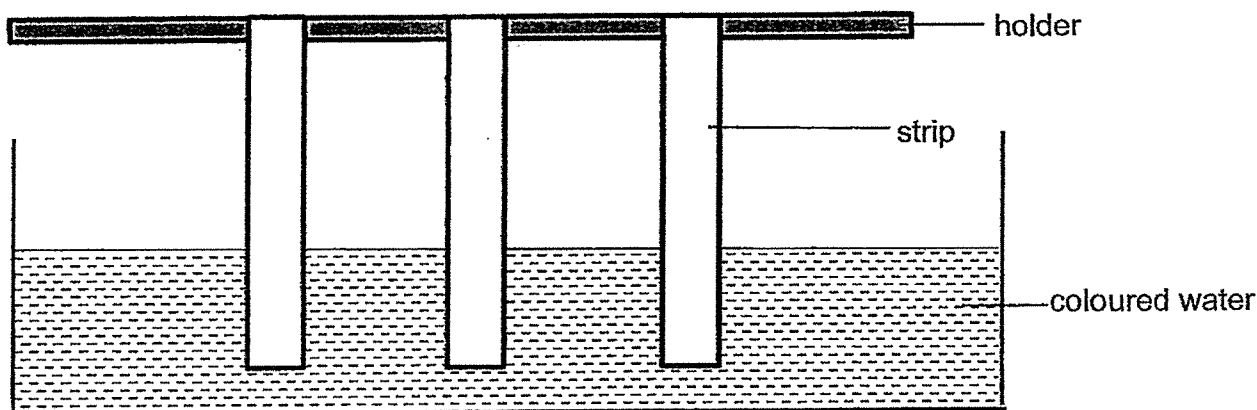
- (b) Name two substances carried by the blood in part X to different parts of the body. [1]

Substance 1: \_\_\_\_\_

Substance 2: \_\_\_\_\_



- 10 Ahmad hung three similar strips made of different materials A, B and C from the same height and dipped them into a basin of coloured water. [www.sgexam.com](http://www.sgexam.com)



After ten minutes, he measured the water level on the strips and recorded the results in the table below.

Strip	Height of water level on material (cm)	
	Before	After
A	0	4
B	0	10
C	0	0

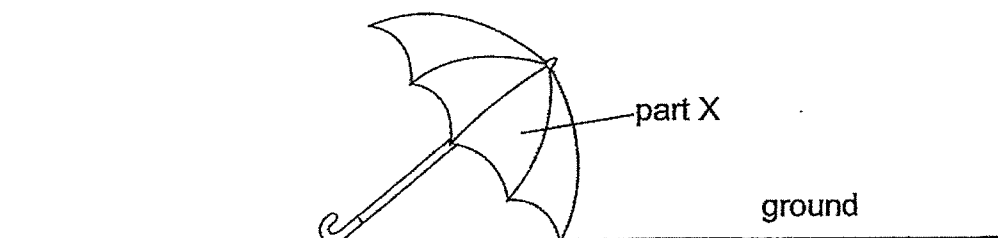
- (a) Give a reason why coloured water was used instead of clear water. [1]

---



---

The diagram below shows an umbrella with one of its parts labelled as X.



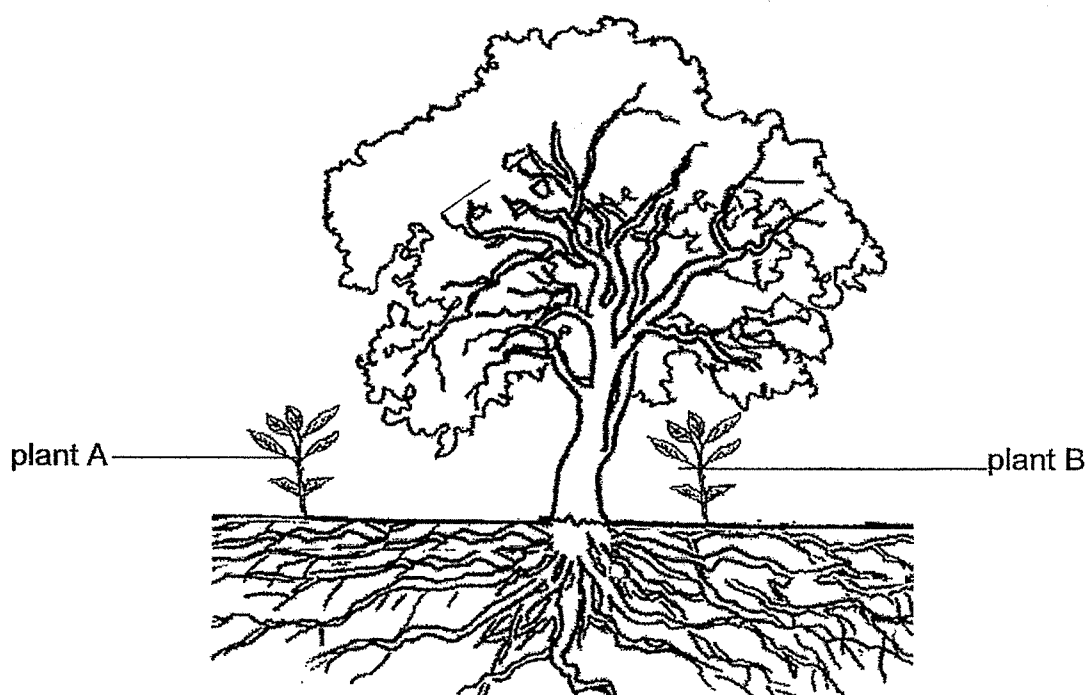
- (b) Based on the results above, which material, A, B or C, is most suitable to make part X? Explain your answer. [1]

---



---

- 11 Mr Lim planted two similar plants, A and B, at different places near a taller tree as shown in the diagram below.



- (a) After two weeks, he observed that plant A grew better than plant B.  
Give a reason for Mr Lim's observation.

[1]

---



---

- (b) The roots of the taller tree grew deep underground and spread outwards as shown in the diagram above.  
Give two reasons why the roots grew this way.

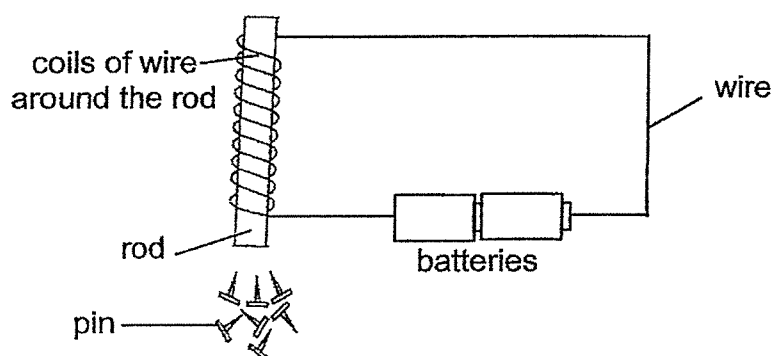
[2]

Reason 1: \_\_\_\_\_

\_\_\_\_\_

Reason 2: \_\_\_\_\_

\_\_\_\_\_



Carol repeated the experiment several times after making some changes to the set-up and observed the change in the number of pins attracted by the rod each time.

She recorded the details of her experiment in the following table.

Set-up	Number of coils of wire around the rod	Material of rod
P	10	iron
Q	10	copper
R	5	iron
S	10	steel

- (a) In which set-up, P, Q, R or S would the rod not be able to attract any pins at all? Give a reason for your answer. [1]

---



---

- (b) Carol wanted to increase the number of pins attracted by the rod in set-up P. Suggest a way how she could do so. [1]

---



---

~ End of Term Review ~



YEAR : 2024  
 LEVEL : PRIMARY 4  
 SCHOOL : HENRY PARK PRIMARY SCHOOL  
 SUBJECT : SCIENCE  
 TERM : TERM REVIEW

### SECTION A

Q1	2	Q2	4	Q3	2
Q4	1	Q5	3	Q6	4
Q7	3				

### SECTION B

Q8	a) butterfly cockroach mosquito b) has six legs	centipede (have more than 6 legs)
Q9	a) Heart b) substance 1 : digested food substance 2 : water	
Q10	a) It is because clear water is harder to see on the materials .Hence he can see the water clear up b) Strip C. It is waterproof as after it has been placed in water , its water level remained the same , hence , it is most suitable to make part x of the unmbrella.	
Q11	a) Plant B was placed under the tall tree blocking most of the light while plant A was not hence , it grew better than plant B b) Reason 1 : It can absorb more water and mineral salts Reason 2 : It can anchor the plant more firmly to the ground	
Q12	a) Rod Q . It is made out of copper and copper is a non-magnetic material , hence , it will not attract any pins. b) She can add more coils around the iron rod.	

1  
END