

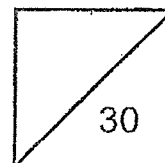


Methodist Girls' School (Primary)  
Primary 4 Mathematics  
Weighted Assessment 2 2024

Name: \_\_\_\_\_ ( ) Date: \_\_\_\_\_

Class: Primary 4. \_\_\_\_\_

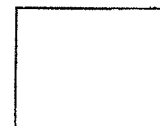
Parent's Signature: \_\_\_\_\_




Question 1 and 4 carry 2 marks each. For each question, four options are given. One of them is the correct answer. Make your choice (1, 2, 3 or 4) and shade your answer accordingly below. (8 marks)

Do not write  
in this space

- 1  
2  
3  
4



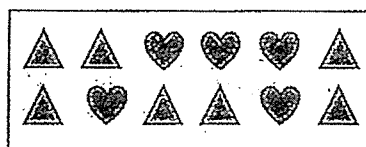
- 1 What fraction of the shapes in the box are  ?

(1)  $\frac{5}{12}$

(2)  $\frac{5}{7}$

(3)  $\frac{7}{12}$

(4)  $\frac{7}{5}$



2  $1 - \frac{2}{5} - \frac{1}{6} =$  \_\_\_\_\_

(1)  $\frac{3}{11}$

(2)  $\frac{13}{30}$

(3)  $\frac{17}{30}$

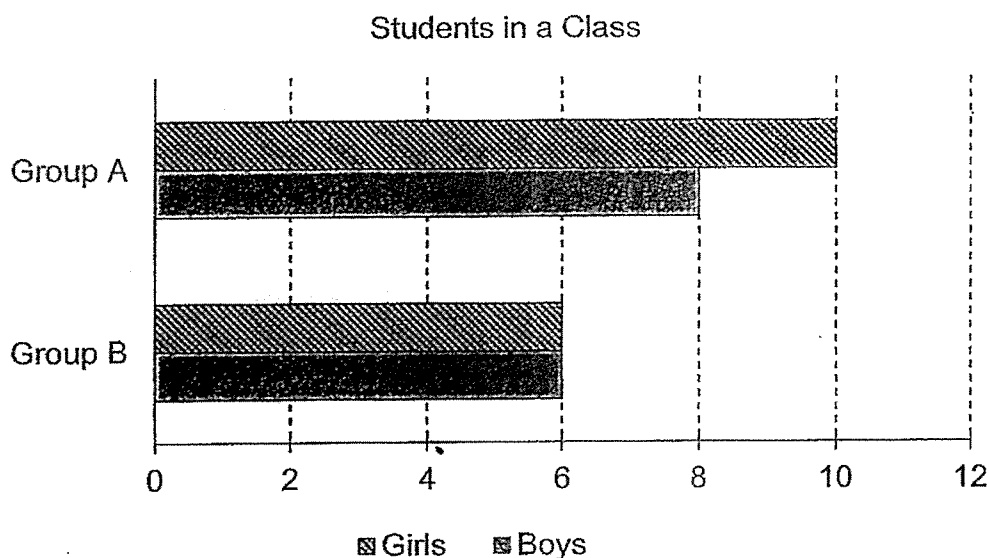
(4)  $\frac{8}{11}$

Do not write  
in this space

- 3 Ravi drank  $\frac{3}{4}$  ℓ of water. His sister drank  $\frac{1}{5}$  ℓ less water than he did.  
How much water did they drink altogether?

- (1)  $1\frac{7}{10}$  ℓ  
(2)  $1\frac{3}{10}$  ℓ  
(3)  $\frac{19}{20}$  ℓ  
(4)  $\frac{11}{20}$  ℓ

- 4 A class of students is put into two groups, A and B.  
The bar graph shows the number of boys and girls in each group.



What fraction of the class are boys?

- (1)  $\frac{1}{5}$   
(2)  $\frac{4}{15}$   
(3)  $\frac{7}{15}$   
(4)  $\frac{3}{4}$

Questions 5 to 8 carry 1 mark each. Show your workings clearly in the space below each question and write your answers in the answer spaces provided. For questions which require units, give your answers in the units stated. (4 marks)

Do not write in this space

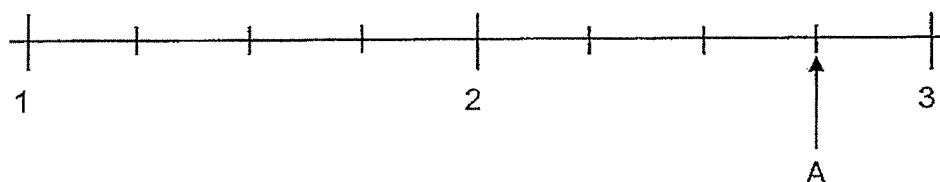
5  $364 \times 27 =$  \_\_\_\_\_

Ans: \_\_\_\_\_

6  $8974 \div 8 =$  \_\_\_\_\_

Ans: \_\_\_\_\_

7 What is the mixed number represented by the letter A in the number line?



Ans: \_\_\_\_\_

8

$$1\frac{5}{8} = \frac{\boxed{?}}{8}$$

Do not write  
in this space

What is the missing value in the box?

Ans: \_\_\_\_\_

Questions 9 to 12 carry 2 marks each. Show your working clearly in the space below each question and write your answers in the answer spaces provided. For questions which require units, give your answers in the units stated. (8 marks)

9 Arrange the fractions in decreasing order.

$$\frac{7}{3}, \quad \frac{11}{5}, \quad 2\frac{2}{5}$$

Ans: \_\_\_\_\_ , \_\_\_\_\_  
(greatest)

10

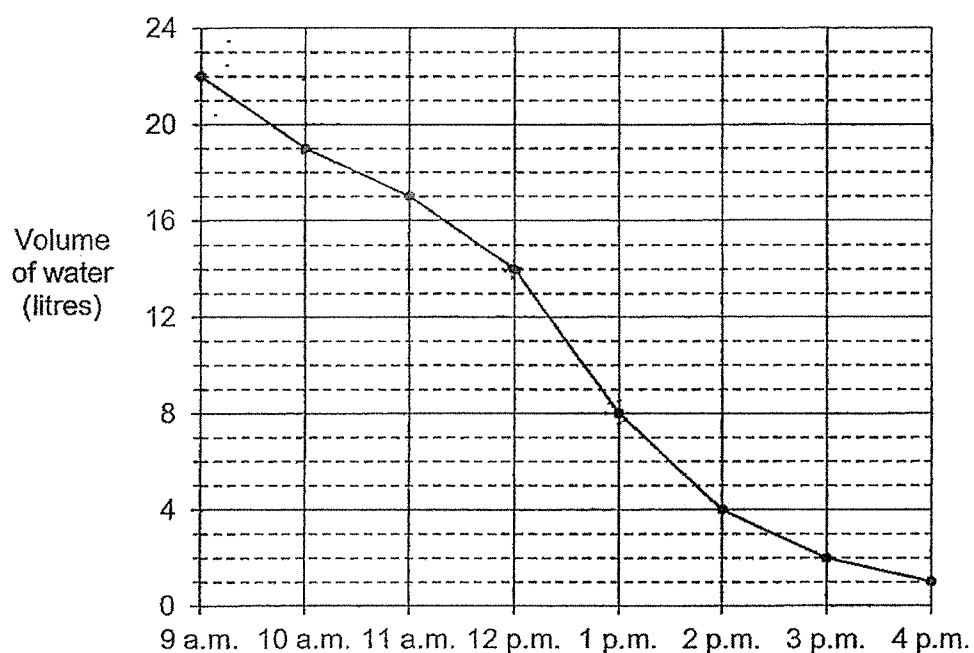
There are 56 flowers in a basket.  $\frac{2}{7}$  of the flowers are roses. How many roses are there in the basket?

Ans: \_\_\_\_\_

11

The line graph shows the amount of water in a water dispenser measured hourly on a certain day, from 9 a.m. to 4 p.m.

Do not write  
in this space



- (a) How much water was taken from the dispenser from 9 a.m. to 10 a.m.?

Ans: (a) \_\_\_\_\_ ℓ

- (b) During which 1-hour period was the most amount of water taken from the dispenser?

Ans: (b) \_\_\_\_\_ to \_\_\_\_\_

12

James planted a seedling and recorded its height at the start of each week over 5 weeks, using a table and a line graph. The height of the seedling is not shown on the scale of the line graph.

Do not write  
in this space

Week 1	Week 2	Week 3	Week 4	Week 5	Week 6
2 cm	6 cm	11 cm	?	17 cm	18 cm



- (a) What was the height of the seedling recorded at the start of Week 4?

Ans: (a) \_\_\_\_\_ cm

- (b) The statement below is either true, false or not possible to tell from the information given. Put a tick (✓) to indicate your answer.

Statement	True	False	Not possible to tell
The height of the seedling increased by 16 cm over the 5 weeks.			

For questions 13 to 15, show your working clearly and write your answers in the spaces provided. The number of marks available is shown in brackets [ ] at the end of each question or part-question. (10 marks)

Do not write  
in this space

- 13 Kenneth cycled home from school. After completing  $\frac{7}{10}$  of the journey, he still needed to cycle another 480 m to reach home. What was the distance between Kenneth's home and his school?

Ans: \_\_\_\_\_ [3]

- 14 Denise, Emily and Fred scored a total of 4490 points in a game. Denise scored 3 times as many points as Emily. Fred scored 550 points less than Denise. How many points did Fred score?

Ans: \_\_\_\_\_ [3]

- 15 Arthur and Ben had the same number of stickers at first. After Arthur gave 72 stickers to Caleb, Ben had 4 times as many stickers as Arthur. Do not write in this space

(a) How many stickers did Arthur have left?

Ans: (a) \_\_\_\_\_ [2]

- (b) Caleb gave  $\frac{4}{9}$  of the stickers he received from Arthur to his friends and kept the rest. How many stickers did Caleb keep for himself?

Ans: (b) \_\_\_\_\_ [2]

END OF PAPER



## ANSWER KEY

YEAR : 2024  
 LEVEL : PRIMARY 4  
 SCHOOL : MGS  
 SUBJECT : MATHEMATICS  
 TERM : WA 2

Q1	3	Q2	2
Q3	2	Q4	3
Q5	9828	Q6	1121R6
Q7	$2\frac{3}{4}$	Q8	$1 \times 8 = 8$ $8 + 5 = 13$
Q9	$2\frac{2}{5}, \frac{7}{3}, \frac{11}{5}$	Q10	$7u = 56$ $1u = 56 \div 7 = 8$ $2u = 8 \times 2 = 16$
Q11	a) $22 - 19 = 3L$ b) 12pm to 1pm	Q12	a) 15 b) True
Q13	$3u = 480$ $1u = 480 \div 3 = 160$ $10u = 160 \times 10 = 1600m$	Q14	$4490 + 550 = 5040$ $5040 \div 7 = 720$ $720 \times 3 = 2160$ $2160 - 550 = 1610$
Q15	a) $3u = 72$ $1u = 72 \div 3 = 24$ b) $9u = 72$ $1u = 72 \div 9 = 8$ $5u = 8 \times 5 = 40$		

END