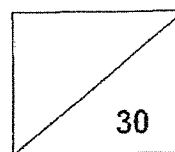




Maha Bodhi School  
2024 Weighted Assessment 1  
Mathematics  
Primary 4



Name: \_\_\_\_\_ ( )

Class: Primary 4 \_\_\_\_\_

Duration: 45 minutes

Date: 23 April 2024

Parent's Signature: \_\_\_\_\_

**Section A (10 marks)**

Questions 1 to 5 carry 2 marks each.

For each question, four options are given. One of them is the correct answer.

Make your choice (1, 2, 3 or 4) and write your choice in the bracket ( ) provided.

1. Arrange the numbers in decreasing order.

61 279 , 60 729 , 60 927 , 61 792

- (1) 60 729 , 60 927 , 61 279 , 61 792  
(2) 61 279 , 60 729 , 61 792 , 60 927  
(3) 61 792 , 61 279 , 60 927 , 60 729  
(4) 60 927 , 61 792 , 60 729 , 61 279

( )

2. Which of the following is a multiple of 8?

- (1) 63  
(2) 56  
(3) 42  
(4) 18

( )

3. The table shows the number of males and females in Primary 5A and 5B who are cyclists and non-cyclists.

Class	Number of males		Number of females		Total
	Cyclists	Non-cyclists	Cyclists	Non-cyclists	
Primary 5A	13	6	9	11	39
Primary 5B	12	7	10	12	41

What is the total number of female cyclists in both classes?

- (1) 42  
 (2) 25  
 (3) 23  
 (4) 19 ( )
4. 76 thousands 25 hundreds and 4 tens is the same as \_\_\_\_\_ .
- (1) 76 240  
 (2) 76 254  
 (3) 78 504  
 (4) 78 540 ( )
5. Last year, Penny's age was a factor of 25.  
 This year, her age is a factor of 24.  
 How old will Penny be next year?

- (1) 7  
 (2) 6  
 (3) 5  
 (4) 4 ( )

**Section B (10 marks)**

Questions 6 to 10 carry 2 marks each.

Show your working clearly and write your answers in the spaces provided.

For questions which require units, give your answers in the units stated.

6. What is the missing number in the number pattern below?

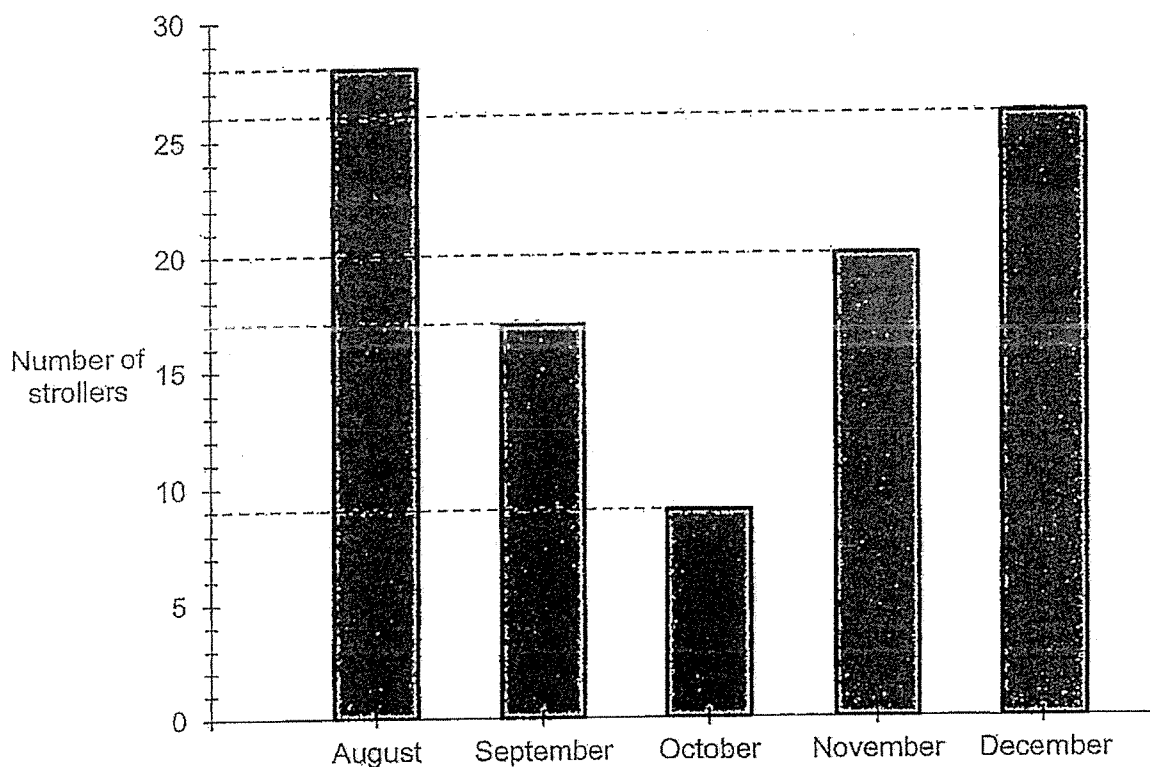
20 880, 20 910, ?, 20 970, 21 000, 21 030

Ans: \_\_\_\_\_

7. List all the common factors of 18 and 42.

Ans: \_\_\_\_\_

8. The bar graph below shows the number of strollers sold from August to December.



What is the total number of strollers sold from September to November?

Ans: \_\_\_\_\_

9. A number is 87 000 when rounded to the nearest 1000.  
What is the smallest possible number?

Ans: \_\_\_\_\_

10. Bernice bought some fruit tarts to give to her cousins.  
When she gave 6 fruit tarts to each cousin, she would have 2 fruit tarts remaining.  
When she gave 7 fruit tarts to each cousin, she would be short of 6 fruit tarts.  
How many cousins did Bernice have?

Ans: \_\_\_\_\_

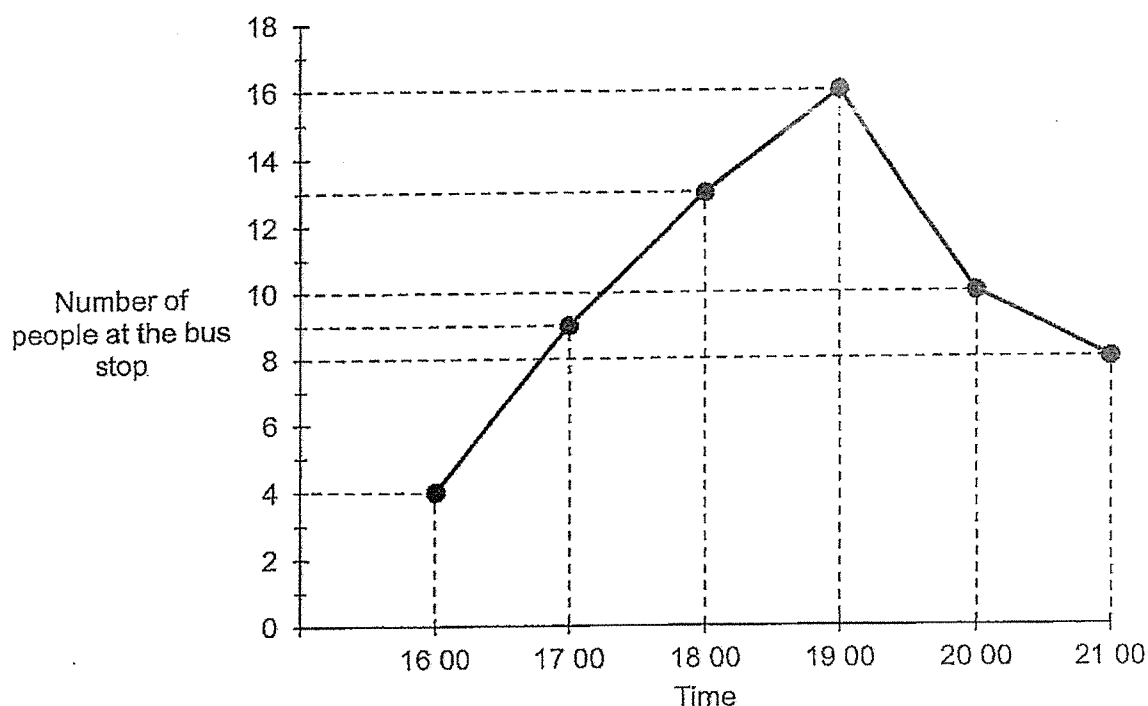
**Section C (10 marks)**

Questions 11 and 12 carry 3 marks each.

Question 13 carries 4 marks.

Show your working clearly and write your answers in the spaces provided. The number of marks available is shown in brackets [ ] at the end of each question or part-question.

11. The line graph shows the number of people at a bus stop from 16 00 to 21 00.



- (a) How many fewer people were at the bus stop at 17 00 than at 19 00?

Ans: (a) \_\_\_\_\_ [1]

- (b) The number of people at the bus stop at 21 00 was twice the number of people at the bus stop at \_\_\_\_\_.

Ans: (b) \_\_\_\_\_ [1]

- (c) During which 1-hour period was the increase in the number of people at the bus stop the greatest?

Ans: (c) \_\_\_\_\_ to \_\_\_\_\_ [1]

12. Yasmin had twice as many cards as Xenia at first.  
After Yasmin gave Xenia 26 cards, Yasmin had 40 more cards than Xenia in the end.  
How many cards did Yasmin have at first?

Ans: \_\_\_\_\_ [3]

13. Janice has twice as many stickers as Cathy.  
Alicia has thrice as many stickers as Janice.  
Janice has 72 fewer stickers than Alicia.  
How many more stickers does Alicia have than Cathy?

Ans: \_\_\_\_\_ [4]



*Remember to check your work!*

*~ End of Paper ~*

/ 4

---

This is the property of Maha Bodhi School.  
No part of this should be duplicated without the permission of Maha Bodhi School.





YEAR : 2024  
 LEVEL : PRIMARY 4  
 SCHOOL : MAHA BODHI SCOOOL  
 SUBJECT : MATHEMATICS  
 TERM : WA1

Q1	3	Q2	2	Q3	4	Q4	4	Q5	1
----	---	----	---	----	---	----	---	----	---

Q6	20940	Q7	1,6,3,2
Q8	$17+20+9=46$	Q9	86500
Q10	8	Q11	a) $16-9=7$ b) 1600 c) 1600 to 1700
Q12	$26 \times 2 = 52$ $52 + 40 = 92$ $92 \times 2 = 184$	Q13	$72 \div 2 = 36$ $36 \div 2 = 18$ $36 + 72 = 108$ $108 - 18 = 90$

END