

St. Hilda's Primary School
Primary 4 Term 3 Weighted Assessment 2 2024

Mathematics

Name: _____ ()

Class: P4 / _____

Date: 19 August 2024

Duration: 55 min

Number of pages: 15 (14 printed and 1 blank)

Parent's Signature: _____

Booklet A	20
Booklet B	30
Total	50

Booklet A

Questions 1 to 6 carry 1 mark each. Questions 7 to 13 carry 2 marks each.
 For each question, four options are given. One of them is the correct answer.
 Make your choice (1, 2, 3 or 4). Write its option number in the brackets provided.
(20 marks)

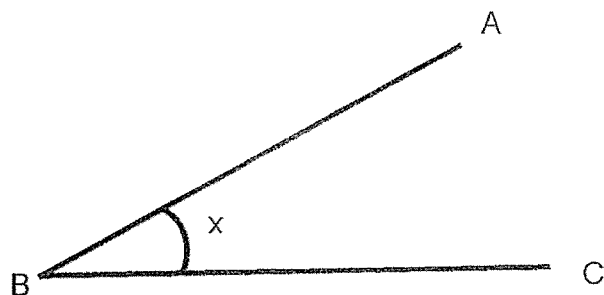
1. The table below shows the number of curry puffs Mr Ali sold on Sunday.
 How many potato curry puffs were sold on Sunday?

Day	Chicken Curry Puffs	Potato Curry Puffs	Total
Sunday	112	?	290

- (1) 138
 (2) 178
 (3) 188
 (4) 402

()

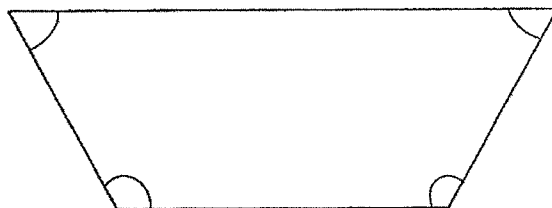
2. Name the angle below.



- (1) $\angle ABC$
- (2) $\angle AXB$
- (3) $\angle BXC$
- (4) $\angle XBC$

()

3. In the figure below, how many angles are smaller than a right angle?



- (1) 1
- (2) 2
- (3) 3
- (4) 4

()

4. Express $2\frac{3}{5}$ as an improper fraction.

(1) $\frac{6}{5}$

(2) $\frac{13}{5}$

(3) $\frac{17}{5}$

(4) $\frac{23}{5}$ ()

5. What is $\frac{5}{8}$ of 24?

(1) 15

(2) 29

(3) 100

(4) 192 ()

6. Find the sum of $\frac{1}{3}$ and $\frac{1}{2}$.

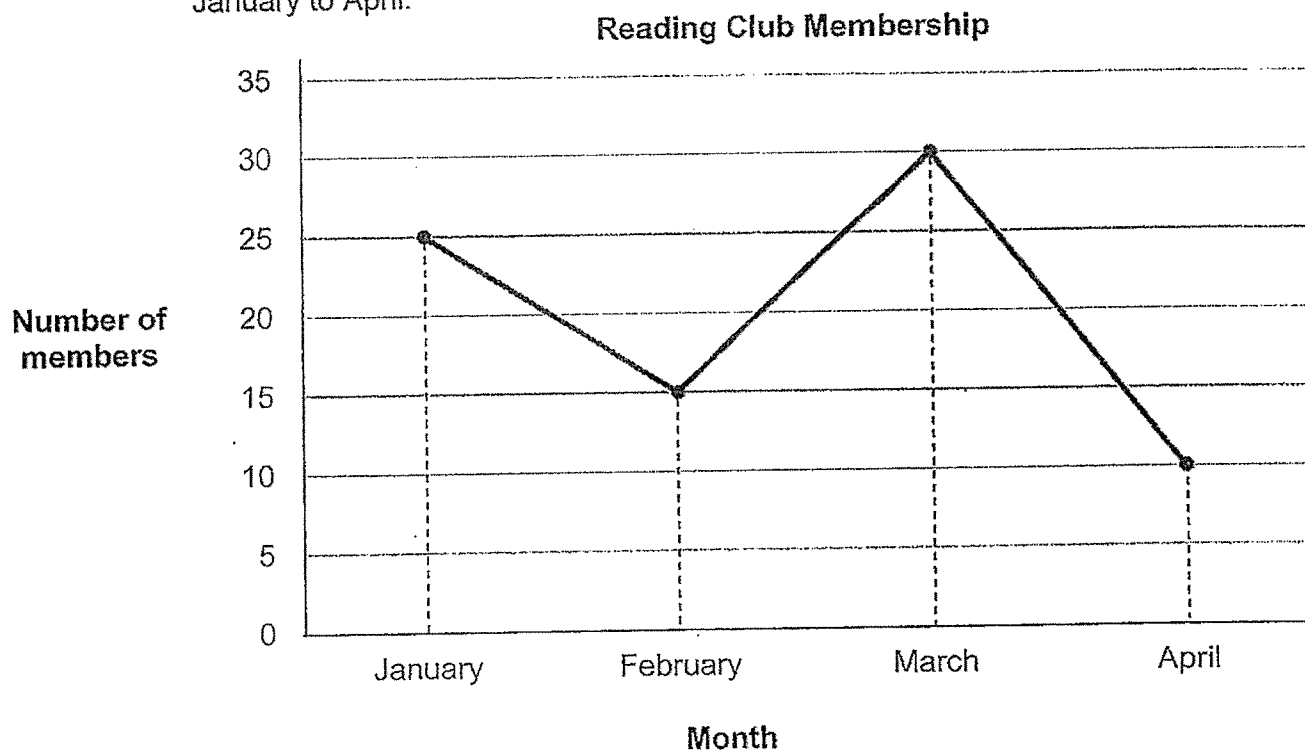
(1) $\frac{2}{5}$

(2) $\frac{1}{6}$

(3) $\frac{2}{6}$

(4) $\frac{5}{6}$ ()

7. The line graph below shows the number of members in a Reading Club from January to April.



The greatest decrease in the number of members is from _____ to _____.

- (1) January to February
- (2) January to April
- (3) February to March
- (4) March to April

()

8. Subtract $\frac{7}{9}$ from 5.

(1) $\frac{2}{9}$

(2) $\frac{35}{9}$

(3) $4\frac{2}{9}$

(4) $5\frac{7}{9}$ ()

9. A ribbon is $\frac{1}{4}$ m long. A string is $\frac{1}{6}$ m longer than the ribbon. What is the total length of the ribbon and string?

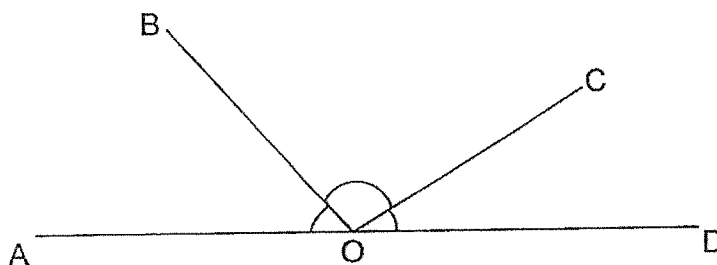
(1) $\frac{1}{6}$ m

(2) $\frac{5}{12}$ m

(3) $\frac{7}{12}$ m

(4) $\frac{2}{3}$ m ()

10. Which of the following statements is true?



- (1) $\angle AOB$ is an obtuse angle.
- (2) $\angle AOC$ is an acute angle.
- (3) $\angle BOC$ is a right angle.
- (4) $\angle COD$ is an acute angle.

()

11. There were 72 marbles in a box.

$\frac{1}{8}$ of the marbles are blue. The rest are red.

How many more red marbles than blue marbles are there?

- (1) 9
- (2) 54
- (3) 63
- (4) 80

()

12. The table below shows the number of stickers five friends collected.
Answer questions **12** and **13**.

Friends	Total no. of stickers
Rita	76
Sam	152
Tina	123
Uma	52
Violet	304

Who collected the least number of stickers?

- (1) Rita
- (2) Tina
- (3) Uma
- (4) Violet

()

13. Who collected twice as many stickers as Sam?

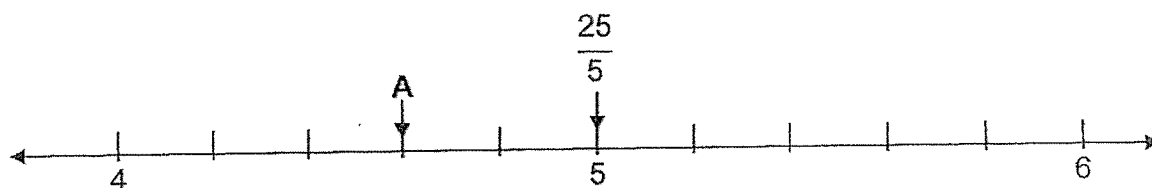
- (1) Rita
- (2) Tina
- (3) Uma
- (4) Violet

()

Booklet B

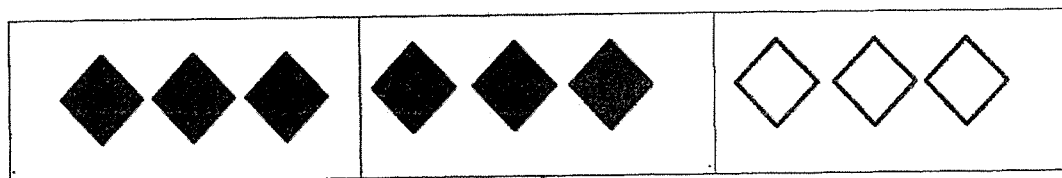
Questions 14 to 23 carry 2 marks each. Show your working clearly and write your answers in the spaces provided. For questions which require units, give your answers in the units stated. (20 marks)

14. What is the improper fraction represented by the letter A on the number line?



Ans: _____

15. What fraction of the set below is shaded?
Give your answer as a fraction in the simplest form.

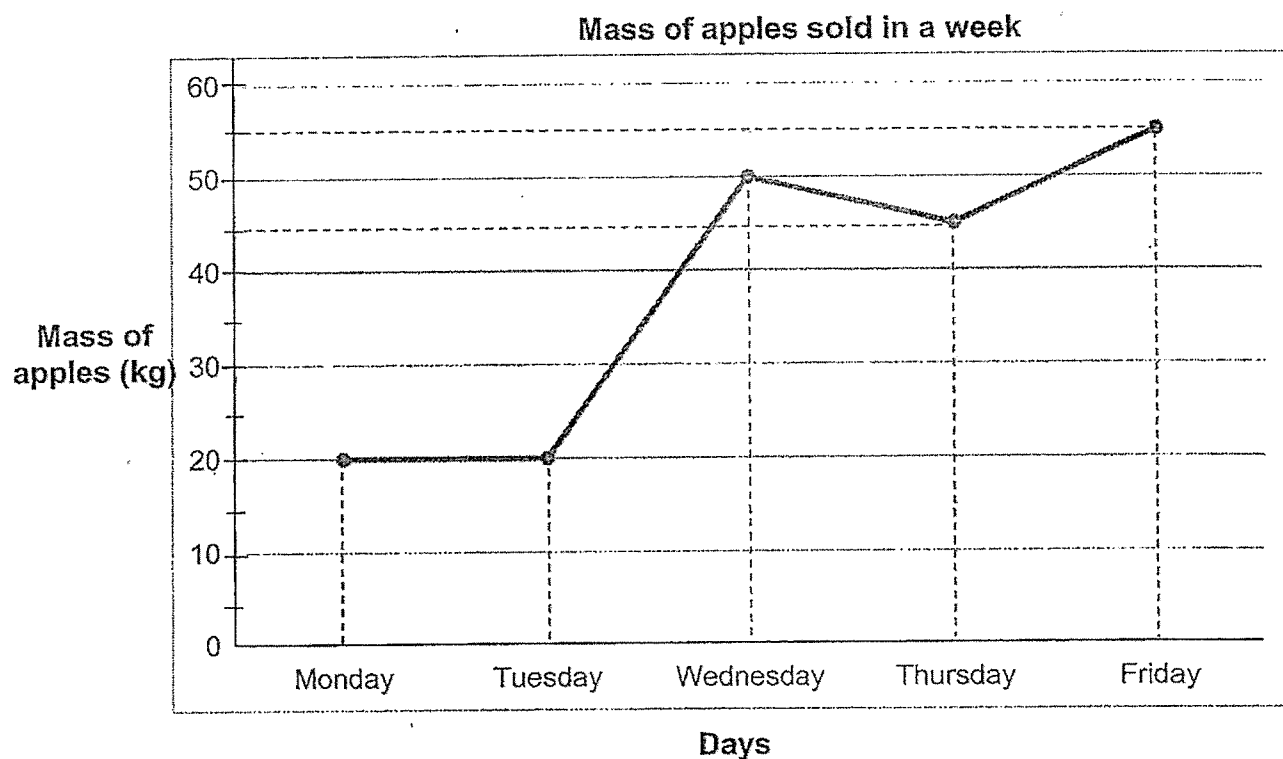


Ans: _____

- 16 The table below shows the number of students who are right-handed and left-handed in Classes 4A and 4B. Fill in the missing numbers in the table below.

	4A	4B
Right-handed	33	(b) _____
Left-handed	7	9
Total	(a) _____	38

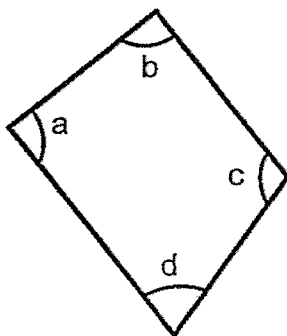
17. The line graph below shows the mass of apples sold in a fruit shop.



What was the total mass of apples sold from Monday to Wednesday?

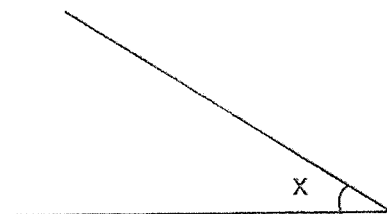
Ans: _____ kg

18. Name the smallest angle in the figure shown below.



Ans: \angle _____

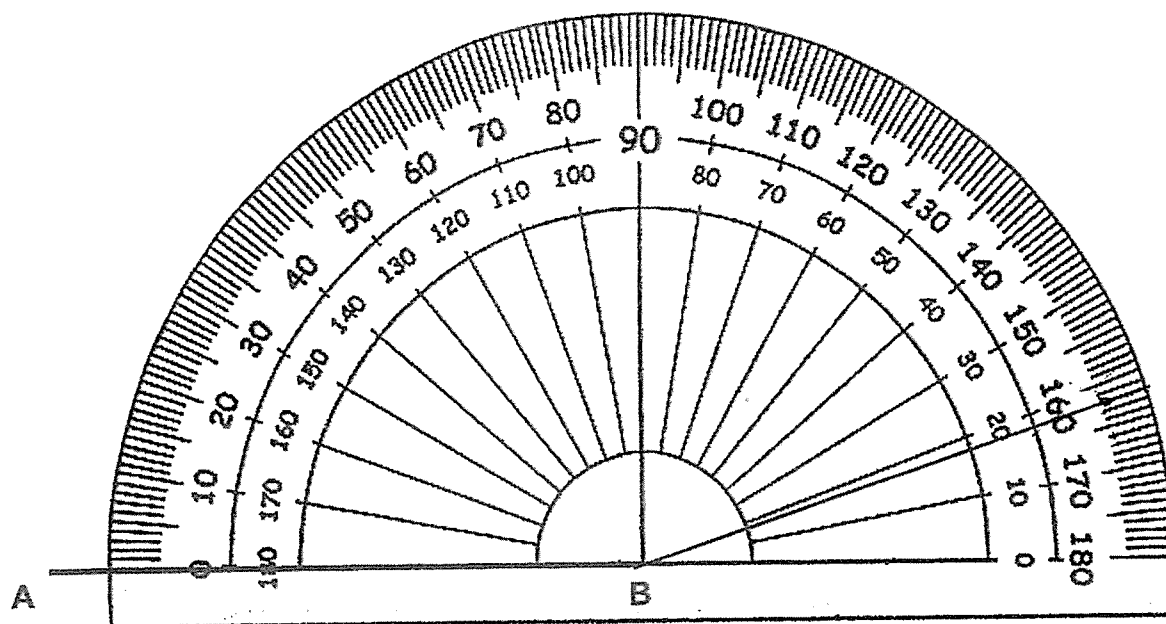
19. Measure and write down the size of angle x.



Ans: $\angle X$: _____[°]

20. Draw $\angle ABC = 162^\circ$ using the given line AB.

Mark and label the angle.



21. The table below shows the different types of canned drinks sold. A total of 500 canned drinks were sold in a week. How many cans of Milo were sold?

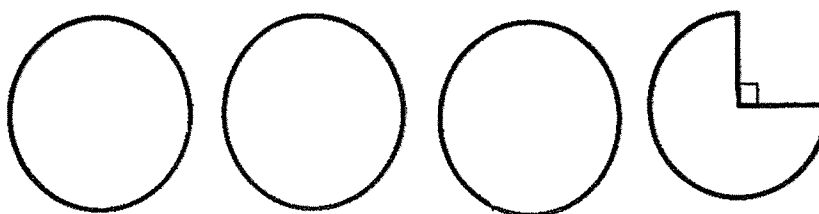
Type of drink	Number of canned drinks
Water	252
Orange Juice	123
Milo	?
Total	500

Ans: _____

22. Container A contains $\frac{2}{3}$ ℓ of water. Container B contains $\frac{1}{6}$ ℓ lesser than Container A. What is the total capacity of Containers A and B? Express your answer as a mixed number in the simplest form.

Ans: _____ ℓ

23. Look at the shapes below. How many quarter circles are there?



Ans: _____

Questions 24 to 26 carry a total of 10 marks. The number of marks available is shown in brackets [] at the end of each question or part-question. Show your working clearly and write your answers in the spaces provided. (10 marks)

24. Tessa used $\frac{1}{4}$ m of string to make ribbons.

Marie used $\frac{1}{3}$ m of string more than Tessa to make ribbons.

What is the total length of string used to make ribbons?

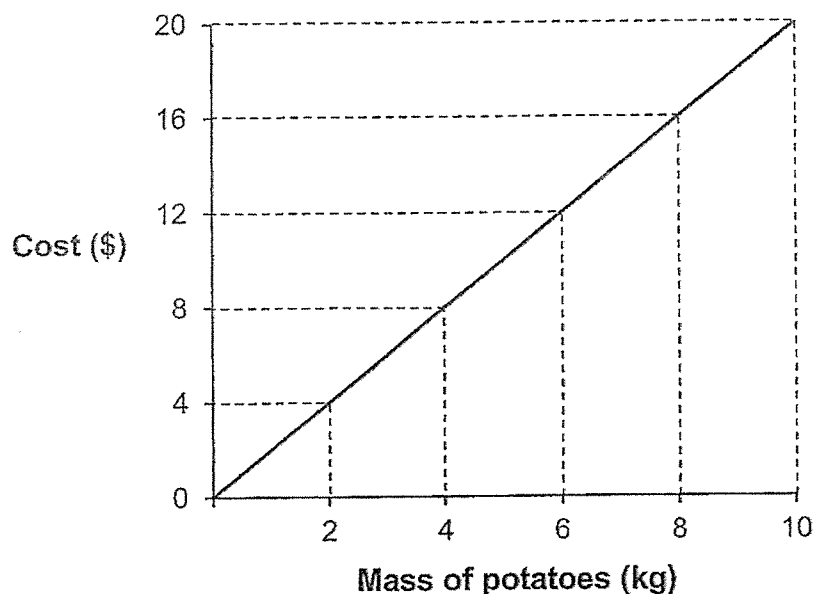
Give your answer as a fraction in the simplest form.

Ans: _____ [3]

25. There were some marbles in a bag. John took $\frac{2}{5}$ of the marbles and Tim took the rest. Tim took 30 more marbles than John. How many marbles were there in the bag at first?

Ans: _____ [3]

26. The graph below shows the cost of potatoes of different masses.



- (a) Mrs Tan bought 6 kg of potatoes. She paid the cashier \$50.
How much change did she receive?

Ans: (a) _____ [2]

- (b) Mr Lim bought 8 kg of potatoes. Mr Song bought 10 kg of potatoes.
How much more money did Mr Song spend than Mr Lim?

(b) _____ [2]

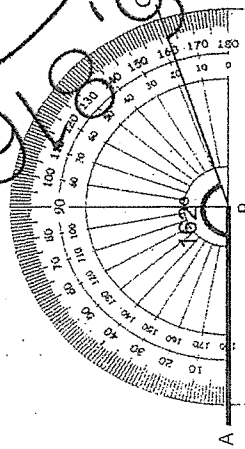
THE END
HAVE YOU CHECKED YOUR WORK CAREFULLY?

Booklet A

No.	Answer
1.	2
2.	1
3.	2
4.	2
5.	1
6.	4
7.	4
8.	3
9.	4
10.	4
11.	2
12.	3
13.	4

Booklet B

No.	Solutions
14.	$\frac{23}{5}$
15.	$\frac{6}{9} [M1] = \frac{2}{3}$
16.	(a) 40 (b) 29
17.	$20 + 20 + 50 = 90$
18.	$\angle d$
19.	32°
20.	



21.	$252 + 123 = 375$ $500 - 375 = 125$ Or $500 - 252 = 248$ $248 - 123 [M1] = 125$ Or $500 - 123 = 377$ $377 - 252 [M1] = 125$
22.	$\frac{2}{3} - \frac{1}{6} = \frac{4}{6} - \frac{1}{6} = \frac{3}{6}$ $\frac{3}{6} + \frac{2}{3} = \frac{3}{6} + \frac{4}{6} = \frac{7}{6}$ $\frac{7}{6} - 1 = \frac{1}{6}$
23.	15

24.	$\frac{1}{3} + \frac{1}{4} = \frac{4}{12} + \frac{3}{12} = \frac{7}{12}$ $\frac{1}{3} + \frac{7}{12} = \frac{4}{12} + \frac{7}{12} = \frac{11}{12}$ Or $\frac{1}{3} + \frac{7}{12} = \frac{4}{12} + \frac{7}{12} = \frac{11}{12}$ $\frac{11}{12} - \frac{5}{12} = \frac{6}{12} = \frac{1}{2}$
-----	---

The total length of string is $\frac{5}{6}$ m.

25.	$\frac{5}{5} - \frac{2}{5} = \frac{3}{5}$ $\frac{1}{5} \rightarrow 30$ $\frac{3}{5} \rightarrow 150$ There are 150 marbles at first.
-----	---

26.	(a) 6 kg of potatoes cost = \$12 \$50 - \$12 = \$38 She received \$38 change.
	(b) 8 kg of potatoes cost = \$16 10 kg of potatoes cost = \$20 \$20 - \$16 = \$4 Mr Song spent \$4 more than Mr Lim.

END