

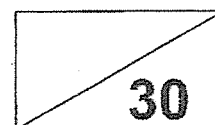
SINGAPORE CHINESE GIRLS' SCHOOL (PRIMARY)
PRIMARY 4 MATHEMATICS
2024 TERM 2 WEIGHTED ASSESSMENT

Name: _____ ()

Date: _____

Class: Primary 4 SY / C / G / SE / P

Duration: 40 minutes



Parent's Signature: _____

Section A

Questions 1 to 5 carry 2 marks each.

For each question, four options are given.

Choose the correct answer and write its number in the brackets provided.

(10 marks)

1. What is the missing number in the box?

$$2\frac{5}{6} = \frac{\boxed{?}}{6}$$

1) 12

2) 13

3) 16

4) 17

()

2. Which of the following has the greatest value?

1) $2\frac{1}{3}$

2) $\frac{15}{12}$

3) $\frac{9}{4}$

4) $1\frac{3}{4}$

()

3. Subtract $\frac{3}{7}$ from 4.

1) $\frac{12}{7}$

2) $\frac{25}{28}$

3) $3\frac{3}{7}$

4) $\frac{25}{7}$

()

4. Bala has 3 times as much money as Mei Ling.

If Bala has \$792, how much money do they have altogether?

(1) \$264

(2) \$1056

(3) \$2376

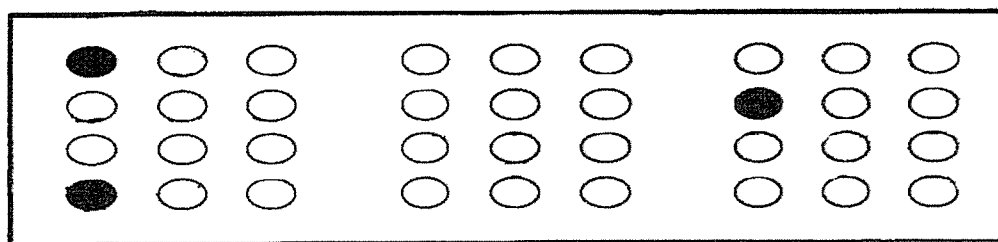
(4) \$3168

()

5. A tray of eggs has a total of 36 eggs.

3 eggs are coloured as shown below.

How many more eggs must be coloured so that $\frac{3}{4}$ of all the eggs are coloured?



1) 24

2) 27

3) 33

4) 36

()

Section B

For questions 6 to 12, show your working in the space provided below each question.

Write your answers in the spaces provided.

The number of marks for each question is indicated in brackets [] at the end of each question or part question. **(14 marks)**

6. What is the product of 619 and 27?

Ans : _____ [2]

7. The table below shows the number of animals bought by a new zoo over 3 months. Some parts of the table were damaged.

Month	Number of animals added to the zoo		
	Mammals	Reptiles	Birds
April	32		5
May	80	70	40
June		80	0
Total	135	200	

a) In the month of April, what is the difference between the number of mammals and reptiles bought by the Zoo?

Ans: _____ [1]

b) Find the total number of animals bought by the zoo over the 3 months.

Ans: _____ [1]

8. Express $\frac{42}{5}$ as a mixed number.

Ans : _____ [2]

9. Arrange the following fractions in decreasing order.

$$1\frac{4}{7}, \quad \frac{9}{8}, \quad \frac{1}{2}, \quad \frac{11}{5}$$

Ans: _____, _____, _____, _____ [2]
(largest)

10. Hina had \$72. She spent $\frac{1}{4}$ of her money on a bag.

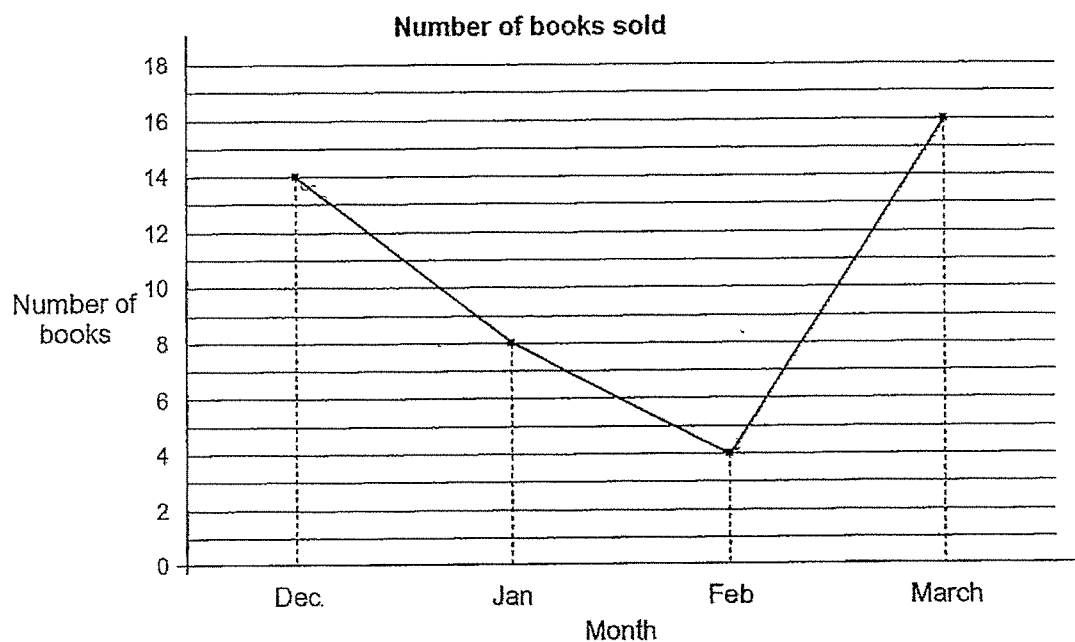
How much money had she left after buying the bag?

Ans: \$ _____ [2]

11. A factory made 7895 cookies. The cookies were packed into boxes of 9.
What was the least number of cookies left unpacked?

Ans: _____ [2]

12. Zac recorded the number of books he sold from December to March in the line graph below.



- a) In which month did Zac sell twice as many books as in January?

Ans: _____ [1]

- b) During which 1-month period was there the greatest decrease in the sales of the books?

Ans: From _____ to _____ [1]

Please turn over to complete page 6

Section C

For questions 13 and 14, show your working clearly in the space provided below each question. All steps should be clearly shown.

Write your answers in the spaces provided.

The number of marks for each question is indicated in brackets [] at the end of each question or part question. (6 marks)

13. A sofa costs \$2286. The total cost of 6 chairs is \$450 more than the sofa.
How much does each chair cost?

Ans: _____ [3]

14. Mrs Tan took $\frac{2}{3}$ h to sew a bag. She took $\frac{3}{4}$ h more to sew a shirt.

What was the total time Mrs Tan spend to sew both the bag and shirt?

Express your answer as a mixed number in its simplest form.

Ans : _____ [3]

END OF PAPER

SCHOOL : SINGAPORE CHINESE GIRLS' SCHOOL
LEVEL : PRIMARY 4
SUBJECT : MATHEMATICS
TERM : 2024 TERM 2 WEIGHTED ASSESSMENT

Q1	Q2	Q3	Q4	Q5					
4	1	4	2	1					

6	$619 \times 27 = 16713$	7	a) 18 b) 380
8	$8\frac{2}{5}$	9	$\frac{11}{5}, 1\frac{4}{7}, \frac{9}{8}, \frac{1}{2}$
10	$72 \div 4 = 18$ $18 \times 3 = 54$	11	$7895 \div 9 = 872 \text{ r}2$
12	a) March b) December to January	13	$2286 + 450 = 2736$ $2736 \div 6 = 456$
14	$1\frac{5}{12} + \frac{2}{3} = 1\frac{13}{12} = 2\frac{1}{12}$		