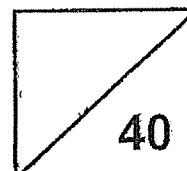




Rosyth School
Weighted Assessment 2024 (Term Two)
SCIENCE
Primary 3

Name: _____

Total
Marks:



Class: Pr 3 _____

Register No. _____ Duration: 50 min

Date: 6 May 2024

Parent's Signature: _____

Instructions to Pupils:

1. Do not open the booklet until you are told to do so.
2. Follow all instructions carefully.
3. For questions 1 to 11, shade the correct ovals on the Optical Answer Sheet (OAS) provided using a 2B pencil.
4. For questions 12 to 17, give your answers in the spaces provided.

	Maximum Marks	Marks Obtained
Q1-Q11	22 marks	
Q12-Q17	18 marks	
Total	40 marks	

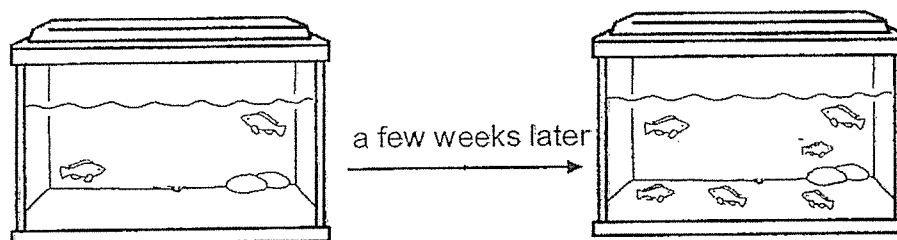
* This booklet consists of 15 printed pages (including this cover page)

This paper is not to be reproduced in part or whole without the permission of the Principal.



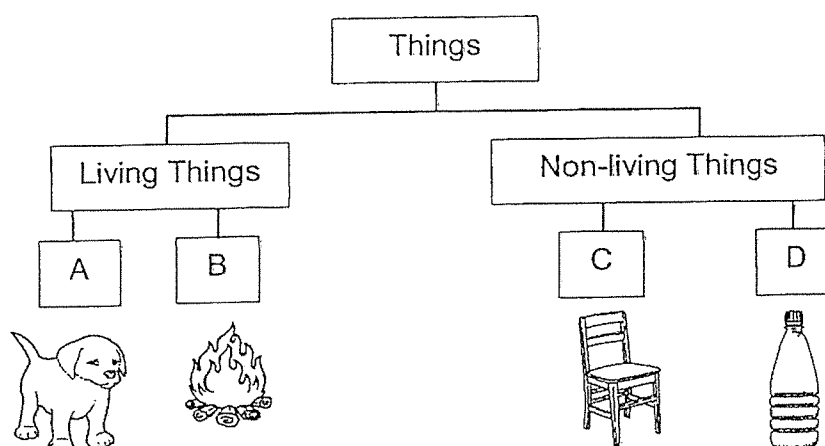
For each question from 1 to 11, four options are given. One of them is the correct answer. Make your choice (1, 2, 3 or 4). **Shade the correct oval (1, 2, 3 or 4) on the Optical Answer Sheet (OAS).** (22 marks)

1. There were two fish in a tank. After a few weeks, there were more than two fish in it.



Which of the following characteristic of living things best describes the observation after a few weeks?

- (1) Living things reproduce.
 - (2) Living things need food.
 - (3) Living things respond to changes.
 - (4) Living things need sunlight to survive.
2. The table below shows how things are being classified.



Which of the following is classified wrongly?

- (1) A
- (2) B
- (3) C
- (4) D

3. Observe the two living things shown below.



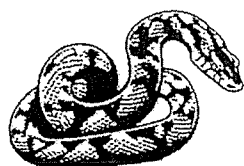
fern



mushroom

Which of the following statements is correct?

- (1) They are both plants.
 - (2) They reproduce by spores.
 - (3) They can make their own food.
 - (4) They feed on both plants and animals that are dead or alive.
4. Study the classification chart and the three animals, X, Y and Z below.



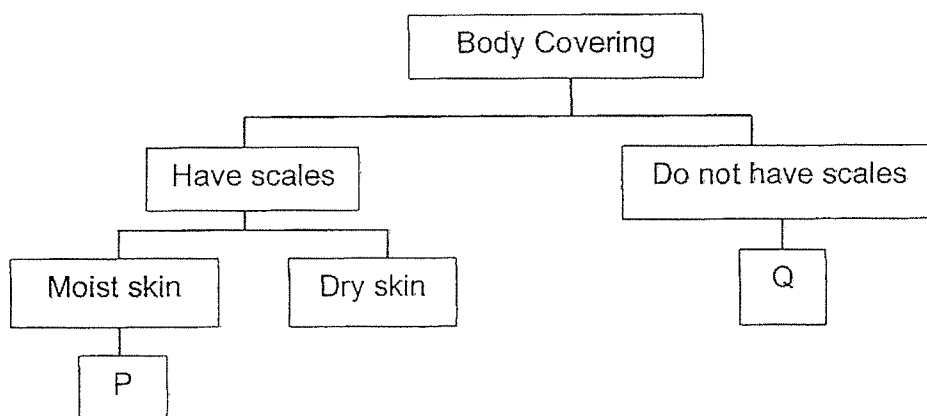
X



Y



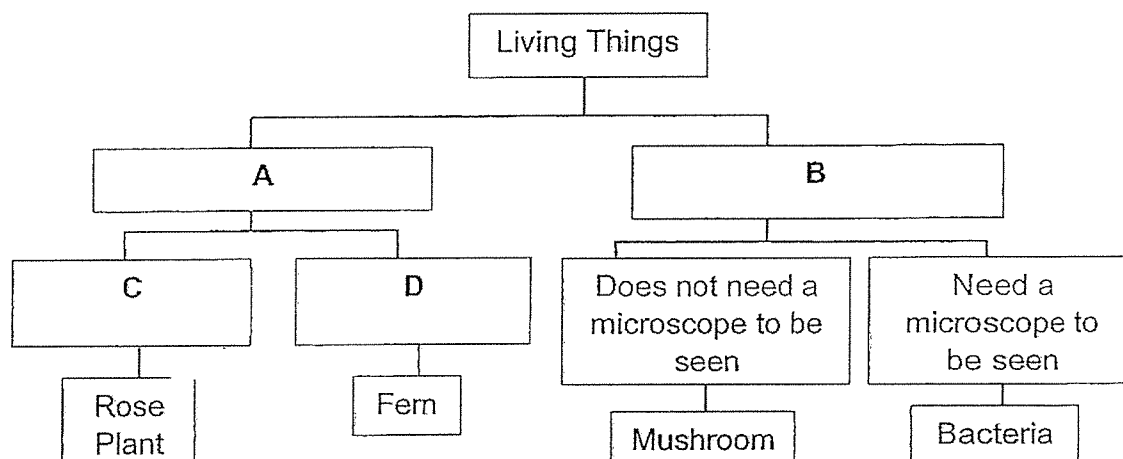
Z



Which of the following shows the correct classification of animals in P and Q?

	P	Q
(1)	Y	X
(2)	Z	X
(3)	Z	Y
(4)	X	Y

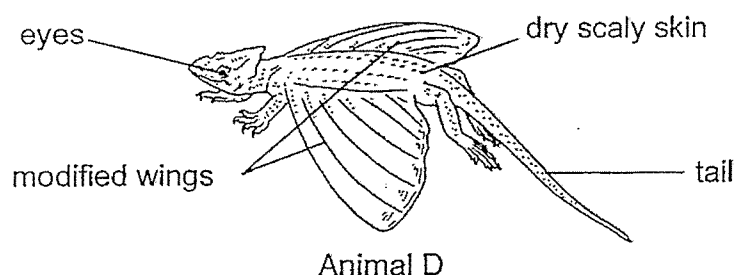
5. Study the classification chart below.



Which of the following represents the correct headings used to classify the living things above?

	A	B	C	D
(1)	Make their own food	Do not make their own food	Reproduce by spores	Reproduce by seeds
(2)	Make their own food	Do not make their own food	Reproduce by seeds	Reproduce by spores
(3)	Do not make their own food	Make their own food	Reproduce by spores	Reproduce by seeds
(4)	Do not make their own food	Make their own food	Reproduce by seeds	Reproduce by spores

6. Animal D is shown in the diagram below.



Which of the following characteristics about animal D shows that it is not a bird?

- (1) It has a tail.
- (2) It has wings to help it to glide.
- (3) It has eyes that can see in the dark.
- (4) It has dry scaly skin on the back and side of its body.

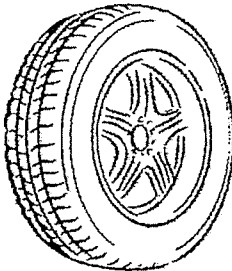
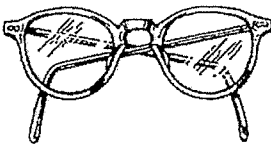
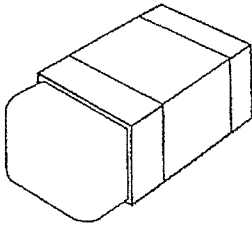
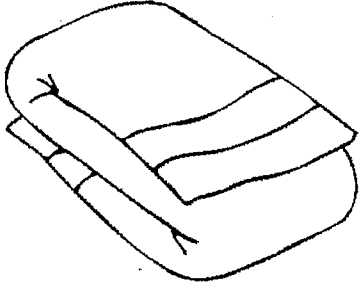
7. Which of the following actions can help Shamady to test the flexibility of his plastic ruler?

- (1) He can try to bend it.
- (2) He can try to break it.
- (3) He can put it on water.
- (4) He can shine a light through it.

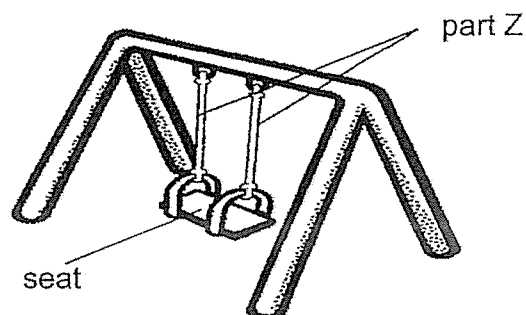
8. Meiling found object Y and recorded her observations about object Y below.

- It is flexible.
- It is not waterproof.
- It does not allow light to pass through

Which of the following could object Y be?

<p>(1) Car tyre</p> 	<p>(2) Glasses</p> 
<p>(3) Eraser</p> 	<p>(4) Towel</p> 

9. Philip wanted to make a swing for his son. He tested out four different materials, A, B, C and D, to make part Z of the swing as shown in the diagram below.



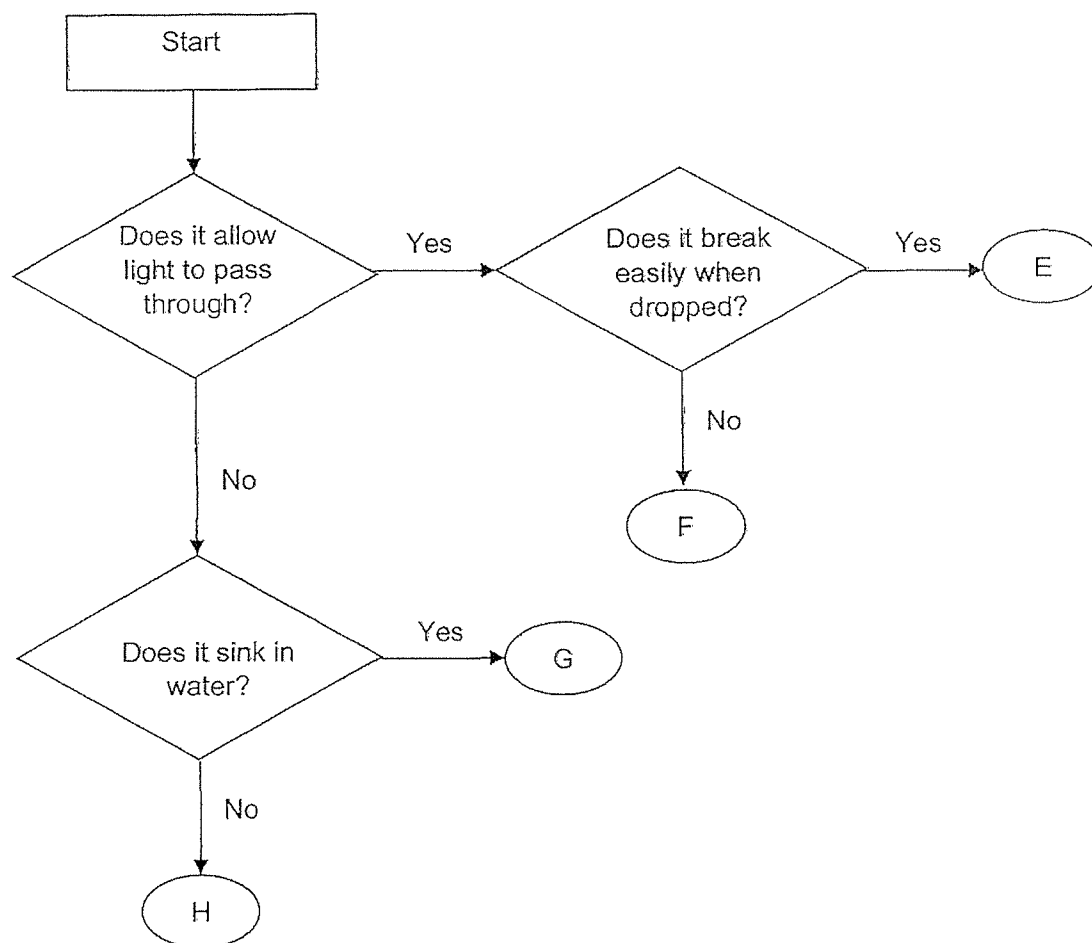
In the experiment, Philip put weights on the seat of the swing and recorded the total weight that part Z could hold before it broke in the table below.

Material	Total weight that part Z could hold before it broke (kg)
A	35
B	23
C	20
D	52

Based on the information in the table, which material should Philip use if his son weighs 24 kg?

- (1) B only
- (2) D only
- (3) A or D
- (4) A, B or D

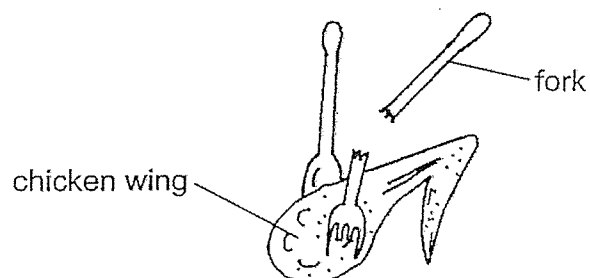
10. Study the flow chart below.



Which letter is likely to represent clear glass?

- (1) E
- (2) F
- (3) G
- (4) H

11. Junjie was eating a chicken wing with a fork. The fork broke when he tried to separate the meat with the fork as shown below.



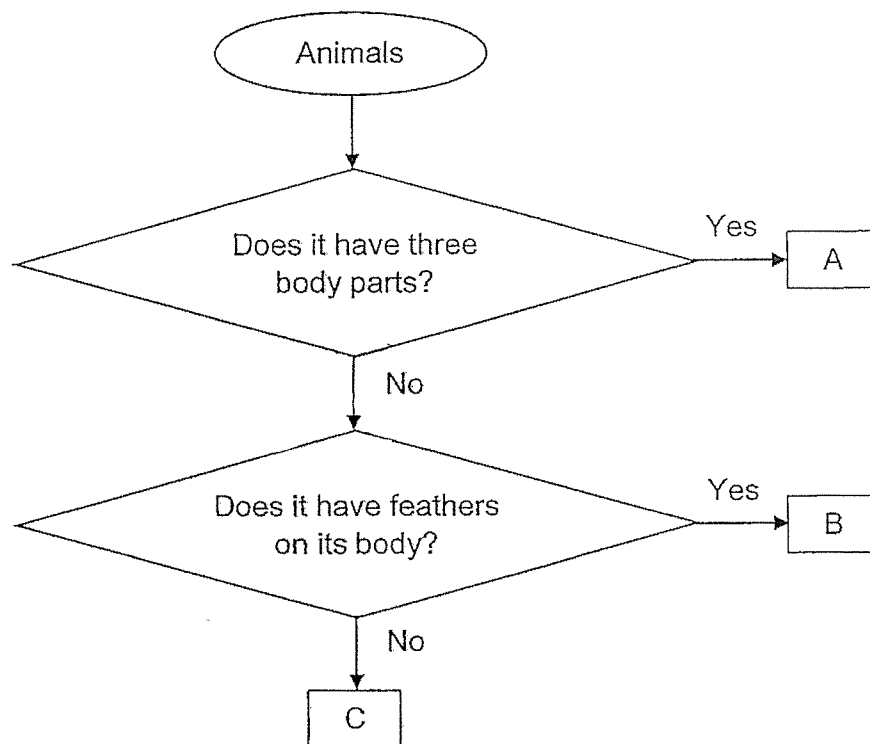
Which of the following correctly shows the material used to make this fork and the reason why it broke?

	Material	Reason
(1)	plastic	It is flexible.
(2)	metal	It is strong.
(3)	plastic	It is not strong.
(4)	metal	It is waterproof.

For questions 12 to 17, write your answers in spaces provided.

(18 marks)

12. Study the flow chart below.



Based on the flow chart above,

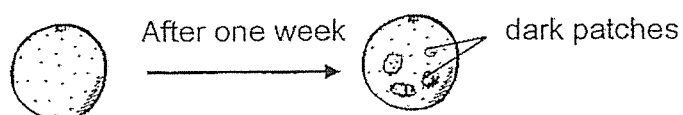
(a) state all the characteristics of animal C.

[1]

(b) state one difference between animal A and B.

[1]

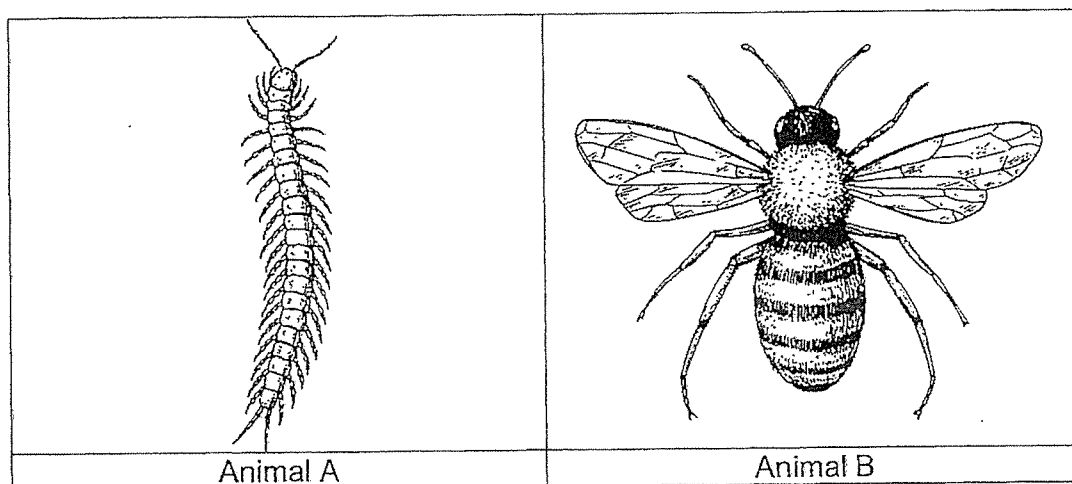
13. Brenda left an orange on the table. After one week, she observed some dark patches growing on the orange. Her mother told her that the dark patches were living things.



- (a) Name the group of living things the dark patches belong to. [1]

- (b) Based on the diagram above, how did the dark patches get its food in order to survive? [1]

14. The picture below shows animal A and animal B.



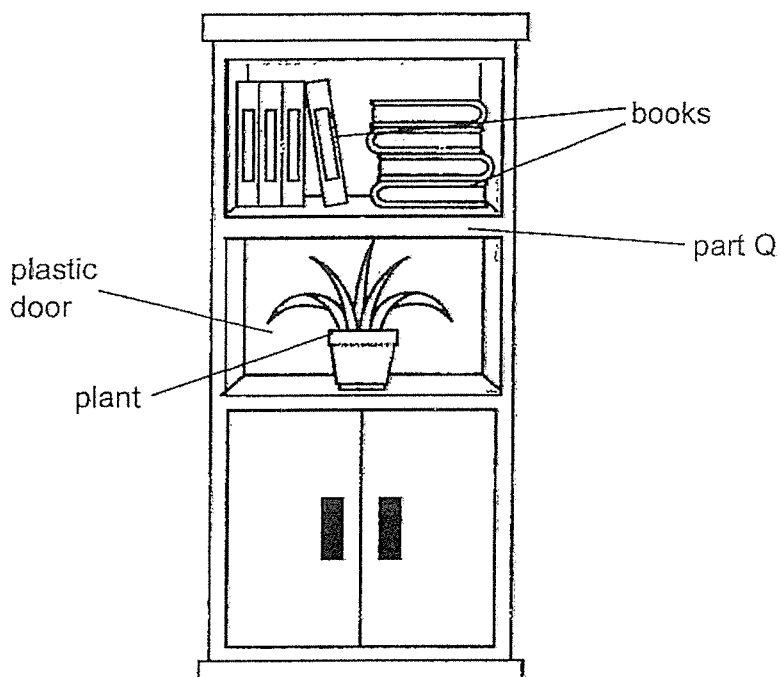
- (a) Based on your observation of the pictures above, state one similarity and one difference between animal A and animal B. (*Do not mention the colour, shape and size.*) [2]

Similarity:

Difference:

- (b) Bala said that animal A is an insect. Do you agree with him? Explain your answer. [2]

15. The picture below shows a cupboard.

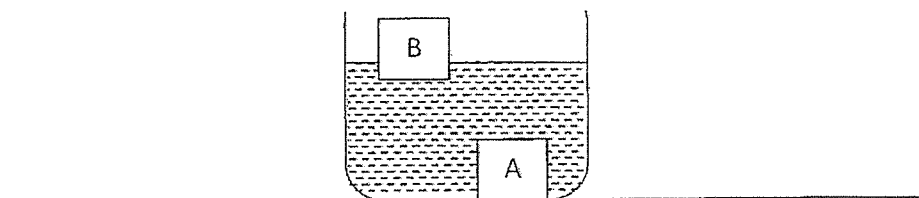


- (a) State the property that makes the plastic door suitable for making the part of the cupboard so that the plant in the cupboard can be seen. [1]

- (b) Part Q is also made of plastic. Give a reason why the books can be put on it. [1]

- (c) Suggest another suitable material that can be used to make part Q based on your reason in (b). [1]

16. Two different objects, A and B, are placed into a beaker of water as shown below.



- (a) Based on your observation of the above set-up, circle the correct answers. [1]

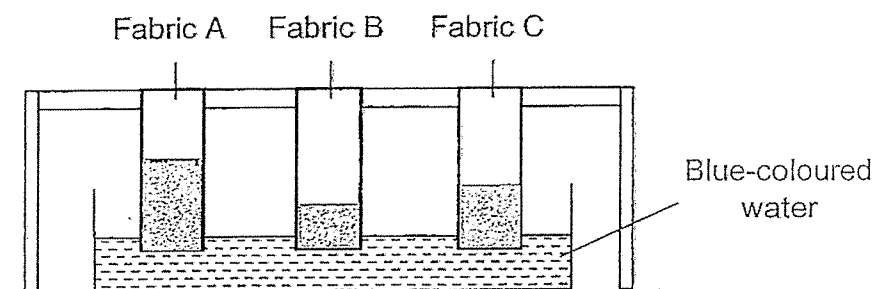
The above set-up shows that object A (sinks in / floats on) water
and object B (sinks in / floats on) water.

- (b) Based on your observations, which objects, A or B, can be used to make the anchor and swimming float? Write A or B in the correct blank. [1]

(i) Object _____	(ii) Object _____

- (c) Object B is made of a material that comes from a part of a plant. Suggest the material that object B can be made of. [1]

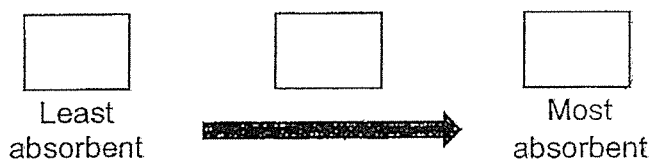
17. Andrew set up an experiment to find out how much water three pieces of fabric, A, B and C, can absorb. All the three pieces of fabric were of the same size. He dipped one end of each piece of fabric into a container of blue-coloured water as shown below.



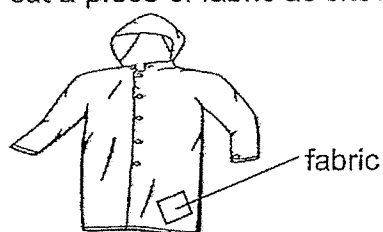
The distance that the blue-coloured water travelled up each fabric after five minutes was recorded in the table below.

	Fabric A	Fabric B	Fabric C
Distance that blue coloured water travelled up fabric (cm)	16	7	10

- (a) Arrange the fabrics, A, B, and C, in order of their absorbency, from the least absorbent to the most absorbent fabric in the boxes provided. [1]



Andrew had a raincoat and he cut a piece of fabric as shown below.



Andrew then dipped one end of the fabric into the same container of blue-coloured water used in the experiment.

- (b) What distance would the blue-coloured water most likely travel up the fabric? [1]

_____ cm

Question 17 continues on page 15.

- (c) Based on the answer in (b), explain why the fabric can be used to make the raincoat. [2]

End of Paper

YEAR : 2024
 LEVEL : PRIMARY 3
 SCHOOL : ROSYTH SCHOOL
 SUBJECT : SCIENCE
 TERM : WA2

Q1	1	Q2	2	Q3	2	Q4	3	Q5	2
Q6	4	Q7	1	Q8	4	Q9	3	Q10	1
Q11	3								

Q12	a) Animal C does not have three body parts and feather on its body. b) Animal A has three body parts and animal B does not have three body parts.
Q13	a) The group of living things the dark patches belong to is fungi. b) In order to survive the dark patches gets its food by breaking down the orange into simple substances and absorbs them like food.
Q14	a) Similarity : Both animal A and B have feelers. Difference : Animal B has wings but animal A does not have wings. b) No. I do not agree with him because animal A does not have six legs and all insects have six legs.
Q15	a) The transparent plastic door make the plant in the cupboard seen. b) The books can be put on part Q because the plastic it is made of is strong and not flexible. c) Another suitable material that can be used to make part Q is wood because it is also strong and not flexible.
Q16	a) sinks in floats on b) (i) A (ii) B c) Rubber
Q17	a) B,C,A b) 0 c) the fabric can be used to make the rain coat because it did not absorb any water and the rain coat should not absorb any water.

1
 END