

PEI HWA PRESBYTERIAN PRIMARY SCHOOL
Weighted Assessment 1

**PRIMARY 3
SCIENCE**

Name: _____ ()

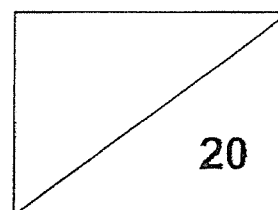
Class: Responsibility _____

Parent's Signature

Total time for paper: Max 50 min

INSTRUCTIONS TO CANDIDATES

1. Write your Name, Class and Register No. in the spaces provided above.
2. DO NOT turn over this page until you are told to do so.
3. Follow all instructions carefully.
4. Answer all questions.
5. Shade your answers on the Optical Answer Sheet (OAS) provided.



This booklet consists of 11 printed pages, excluding the cover page.

For each question from 1 to 20, four options are given. One of them is the correct answer. Make your choice and shade the oval (1, 2, 3 or 4) on the Optical Answer Sheet provided. (20 marks)

1 Study the diagrams carefully.



A girl drinking a glass of water

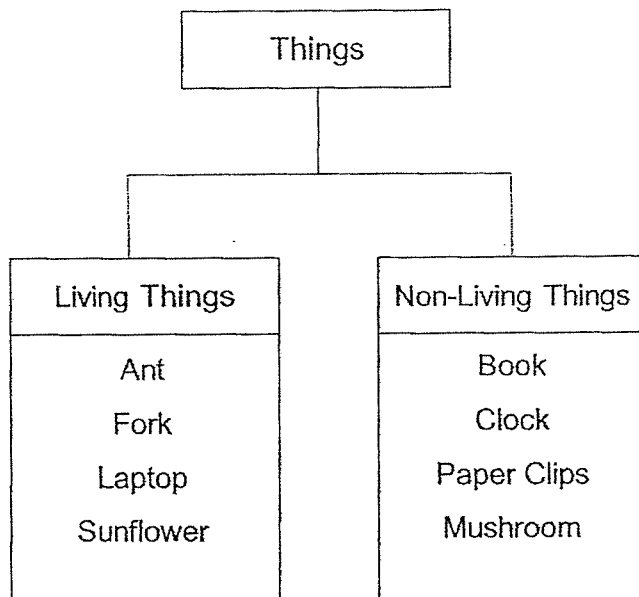


Watering the flower

How are the living things shown above similar in the characteristics of living thing?

- (1) Both need food.
- (2) Both need sunlight.
- (3) Both need water to survive.
- (4) Both respond to their surroundings.

2 Study the chart.



Which of the following things have been classified wrongly in the groups?

	Living Things	Non-living Things
(1)	Sunflower	Book
(2)	Laptop	Mushroom
(3)	Fork	Paper Clips
(4)	Ant	Clock

- 3 Mrs Tan placed three similar glass bottles of milk at three different places for 3 days.



Bottle A



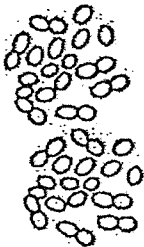


Bottle B



Bottle C

In a closed cupboard In an air-conditioned room In a refrigerator

The amount of bacteria in each bottle of milk after 3 days is recorded in the table below.

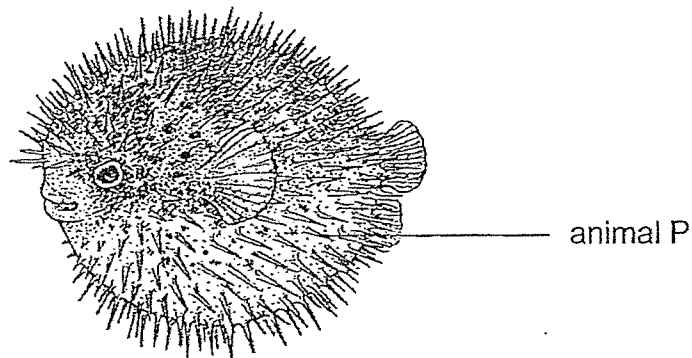
Set up	Bottle A	Bottle B	Bottle C
Amount of bacteria after 3 days			

Based on the results shown in the table, what can Mrs Tan conclude about bacteria?

Bacteria grows fastest in _____.

- (1) a glass bottle
 - (2) a closed cupboard
 - (3) an air-conditioned room
 - (4) a refrigerator
- 4 Mary observed that animal Y moved its head back into its shell when she walked past the animal. What characteristic of living thing is shown here?
- (1) Living things can grow.
 - (2) Living things can reproduce.
 - (3) Living things need water, food and air.
 - (4) Living things can respond to changes in the environment.

- 5 James classified animal P as a fish.



Which observation below shows that James is correct?

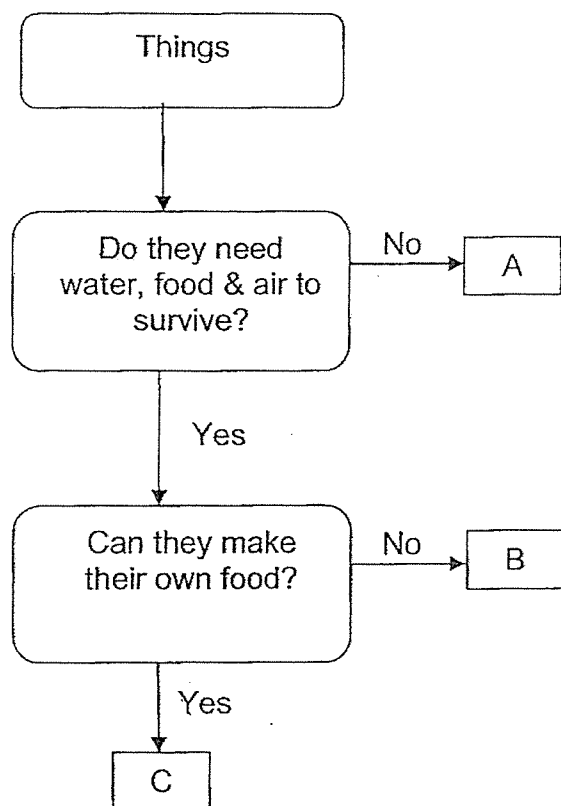
- (1) Animal P has fins.
- (2) Animal P has sharp spines on its body.
- (3) Animal P has two big round eyes and a mouth.
- (4) Animal P has a brown body with many small white spots.

- 6 Which of the following is/are not the characteristics of all insects?

- A They have feathers.
- B They have three body parts.
- C They reproduce by laying eggs.
- D They have six legs and a pair of feelers.

- (1) A only
- (2) A and B only
- (3) B, C and D only
- (4) A, B, C and D

7 Study the flow chart below.



Which of the following correctly shows what A, B and C could be?

	A	B	C
(1)	watering can	fern	chicken
(2)	watering can	chicken	fern
(3)	chicken	watering can	fern
(4)	chicken	fern	watering can

8 Which of the following animals gives birth to its young alive?

- (1) frog
- (2) ostrich
- (3) monkey
- (4) grasshopper

- 9 Which of the following group of living things is/are matched correctly to its characteristics?

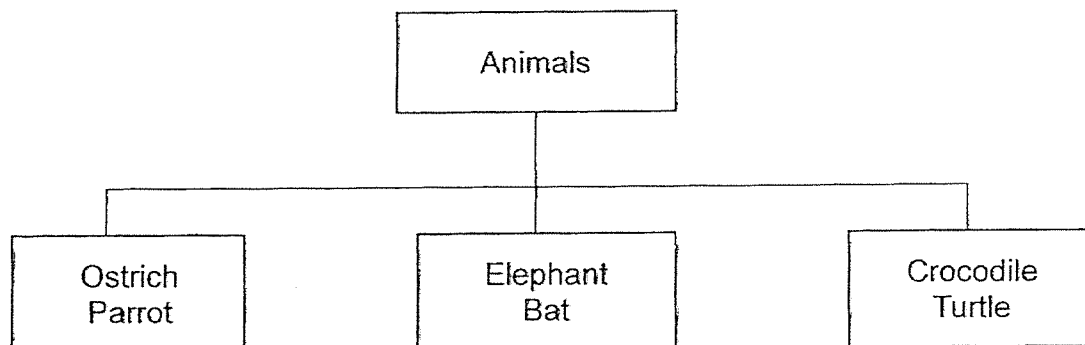
Group of Living Thing	Characteristics
Reptile	It has dry and scaly skin.
Fish	It has rough skin as its body covering.
Mammal	It has hair as its body covering.

- (1) fish only
- (2) reptile only
- (3) fish and mammal only
- (4) reptile and mammal only
- 10 Which animal below has the following characteristics?

- A lays eggs
- B has dry and scaly skin
- C breathes through their lungs

- (1) Bat
- (2) Snake
- (3) Mosquito
- (4) Mudskipper

- 11 The diagram below shows a classification chart.



How are the animals classified in the classification chart above?

- (1) how they move
 - (2) where they live
 - (3) how they reproduce
 - (4) their body outer covering
- 12 The table below shows the characteristics of two animals, W and X.

Animal	Has 4 legs	Lay eggs	Outer covering	Lives on land and in water
W	✓		hair	✓
X		✓	scales	✓

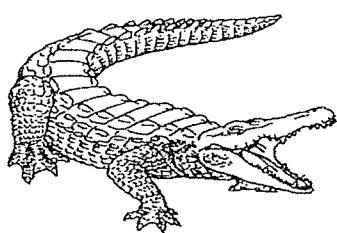
What animal group could animals W and X possibly belong to?

	W	X
(1)	Amphibian	Reptile
(2)	Mammal	Amphibian
(3)	Mammal	Reptile
(4)	Reptile	Insect

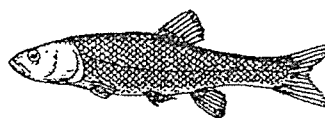
- 13 The table below shows the characteristics of 4 living things.
Which living thing is a non-flowering plant?

	Living thing	Grows	Make its own food	Reproduce from spores
(1)	A	✓	✓	
(2)	B	✓		✓
(3)	C	✓		
(4)	D	✓	✓	✓

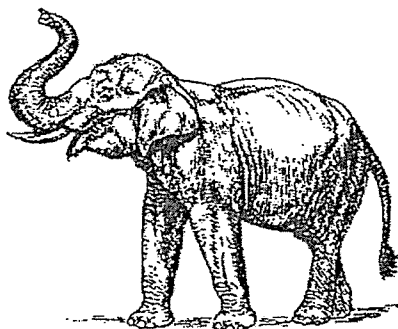
- 14 Which of the following is an amphibian?



Animal A



Animal B



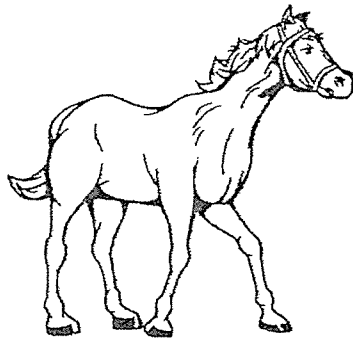
Animal C



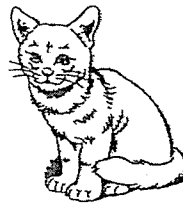
Animal D

- (1) Animal A
- (2) Animal B
- (3) Animal C
- (4) Animal D

15 What is the similarity between Animal J and K?



Animal J

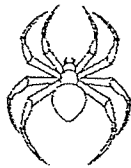


Animal K

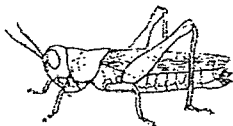
- (1) They lay eggs.
- (2) They breathe through their gills.
- (3) They can live on land and in water.
- (4) They have hair as their body covering.

16 Which animal below is classified as an insect?

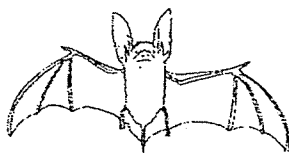
(1)



(2)



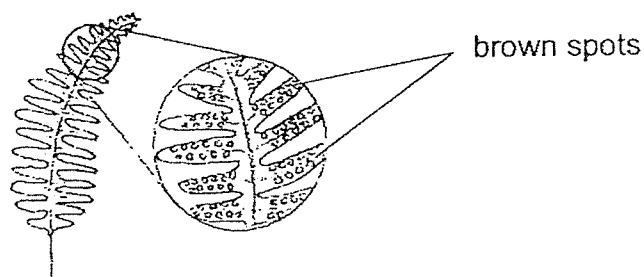
(3)



(4)



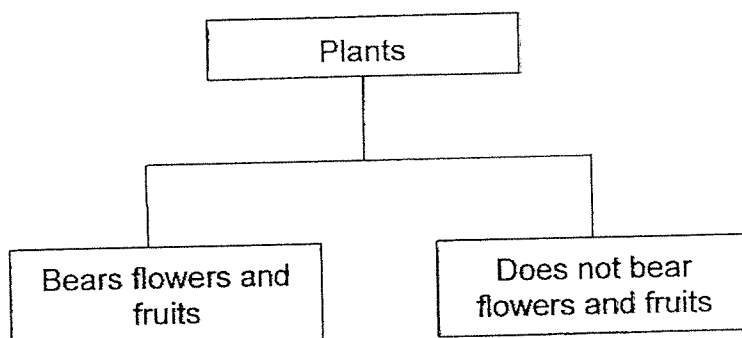
- 17 John observed many brown spots on the underside of the leaves on a plant.



Which statement is correct about this plant?

- (1) This is a flowering plant that produces fruits.
- (2) This is a flowering plant that produces flowers.
- (3) This is a non-flowering plant that reproduces by seeds.
- (4) This is a non-flowering plant that reproduce by spores.

- 18 Study the chart below.



Which of the following are correctly classified based on the charts above?

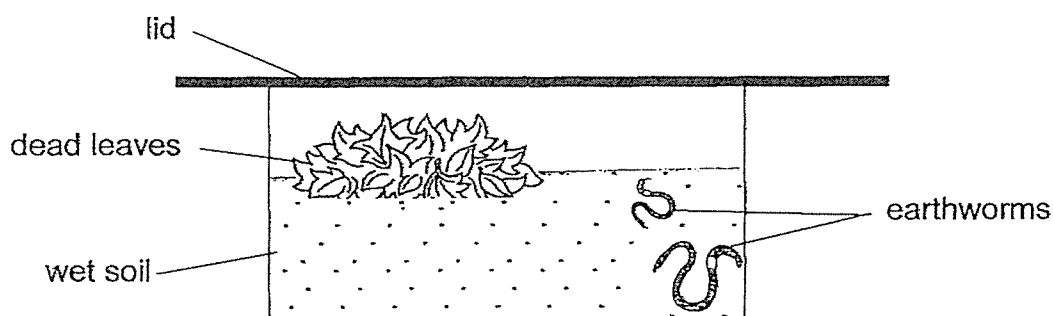
	Bears flowers and fruits	Does not bear flowers and fruits
(1)	Staghorn Fern	Strawberry plant
(2)	Hibiscus plant	Bird's Nest Fern
(3)	Papaya plant	Water Hyacinth
(4)	Bird's Nest Fern	Staghorn Fern

- 19 Ben is required to identify a type of plant in the garden. He is given some descriptions of the plant as shown below.

- A It is not edible.
- B It is poisonous.
- C It grows on other plants
- D It does not have flowers.
- E The leaves can be made into medicine.

Which descriptions would he find most useful in identifying the plant?

- (1) A and E only.
 - (2) C and D only
 - (3) B, D and E only.
 - (4) B, C, D and E only.
- 20 Manu had some earthworms in a tank as shown below. He placed a large amount of dead leaves into the tank which the earthworms feed on.



A few days later, all the earthworms died with some dead leaves remaining in the tank. What could Manu have done to prevent the earthworms from dying?

- (1) use a smaller tank
- (2) poke holes into the lid
- (3) add more earthworms into the soil
- (4) place more dead leaves into the tank

End of paper

SCHOOL : PEI HWA PRESBYTERIAN PRIMARY SCHOOL
LEVEL : PRIMARY 3
SUBJECT : SCIENCE
TERM : 2024 WEIGHTED ASSESSMENT 1

Q1	Q2	Q3	Q4	Q5	Q6	Q7	Q8	Q9	Q10
3	2	2	4	1	1	2	3	4	2
Q11	Q12	Q13	Q14	Q15	Q16	Q17	Q18	Q19	Q20
4	3	4	4	4	2	4	2	2	2