

MAHA BODHI SCHOOL
2024 SCIENCE REVIEW 1
PRIMARY THREE

Name : _____ ()

Date : 24 April 2024

Class : Primary 3 _____

Duration : 40 min

Marks:


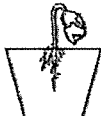
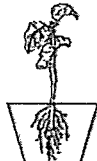
/ 30

Parent's signature : _____

Section A : [8 x 2 marks = 16 marks]

For each question from 1 to 8, four options are given. One of them is the correct answer. Make your choice (1, 2, 3 or 4). **Write your answer in the bracket.**

1. Adam planted a green bean and observed it for two weeks. He recorded his observations in a table below.

day 0	week 1	week 2
		

Based on the observation above, which of the following characteristics of living things did he observe?

- (1) Living things grow.
- (2) Living things reproduce.
- (3) Living things respond to changes.
- (4) Living things need air, food, and water to survive.

()

2. Which of the following statements is true for all plants?

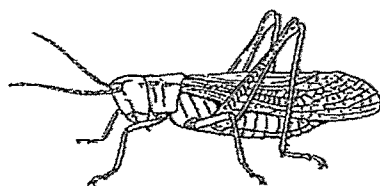
- (1) All plants are green.
- (2) All plants bear fruits.
- (3) All plants make their own food.
- (4) All plants reproduce by spores.

()

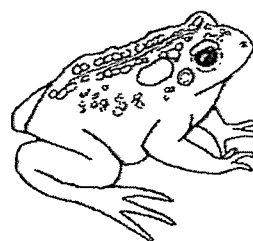
Marks :

/ 4

3. Which of the following is a common characteristic of an insect and an amphibian?



insect

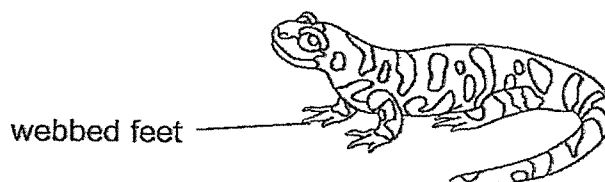


amphibian

- (1) They live on land only.
- (2) They are warm-blooded.
- (3) They reproduce by laying eggs.
- (4) They have the same type of body covering.

()

4. The diagram below shows animal E with webbed feet.



The table below shows how animals can be grouped.

	Gives birth	Lays eggs
Can swim	A	B
Cannot swim	C	D

Which letter A, B, C or D best represents animal E in the table above?

- (1) A
- (2) B
- (3) C
- (4) D

()

Marks :

/ 4

5. Which of the following statements about fungi and bacteria are true?

- A. They can reproduce.
- B. They can be useful to us.
- C. All of them are microorganism.
- D. They do not need food to survive.

- (1) A and B only
- (2) C and D only
- (3) B and D only
- (4) A and C only

()

6. Study the table below.

A (✓) shows that the characteristic is present while a (X) shows that the characteristic is not present.

Characteristics	Living things			
	E	F	G	H
has spore bags	✓	✓	X	X
can move from one place to another	X	X	X	✓
can make its own food	✓	X	✓	X

Which of the organisms above, E, F, G or H, represents a flowering plant?

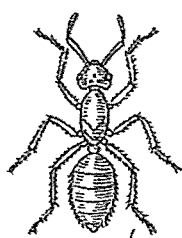
- (1) E
- (2) F
- (3) G
- (4) H

()

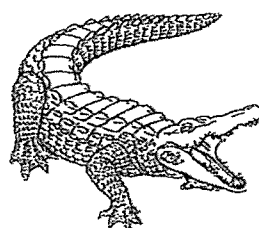
Marks :

/ 4

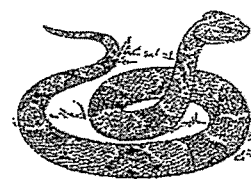
7. Study the classification table and the three animals, J, K and L.



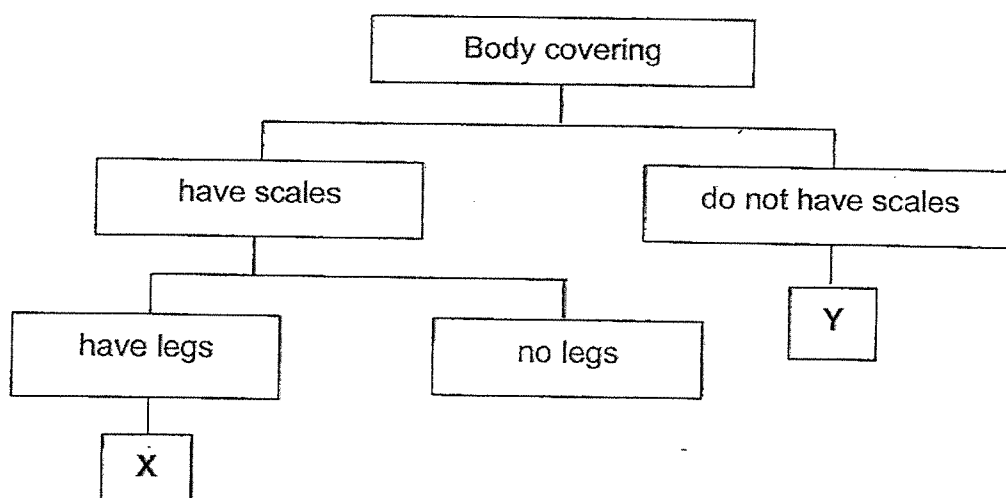
Animal J



Animal K



Animal L



Which of the following shows the correct classification of animals J, K and L in boxes X and Y?

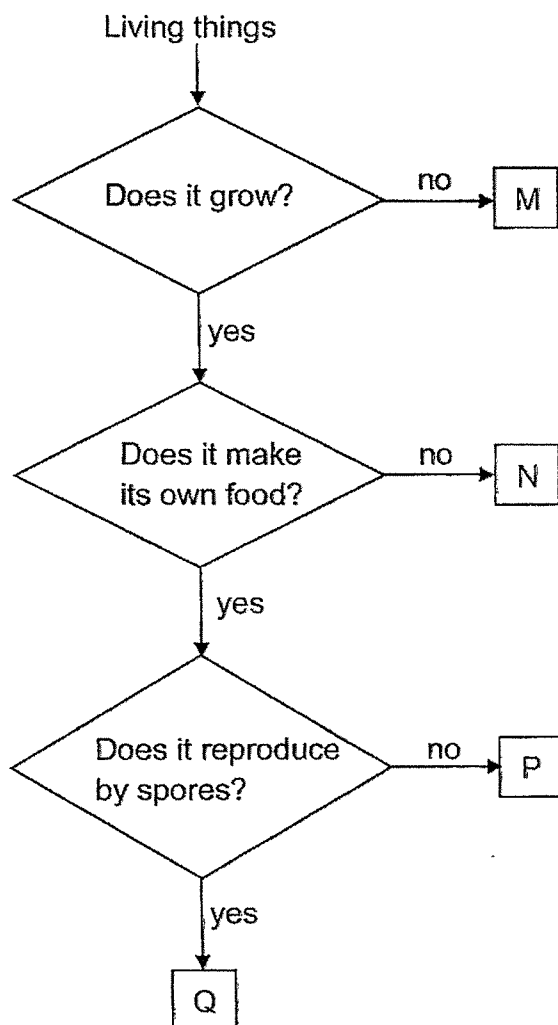
	X	Y
(1)	L	J
(2)	K	J
(3)	J	L
(4)	K	L

()

Marks :

/ 2

8. Study the flowchart below.



Which one of the living things above, M, N, P or Q, represents a fungi?

- (1) M
- (2) N
- (3) P
- (4) Q

()

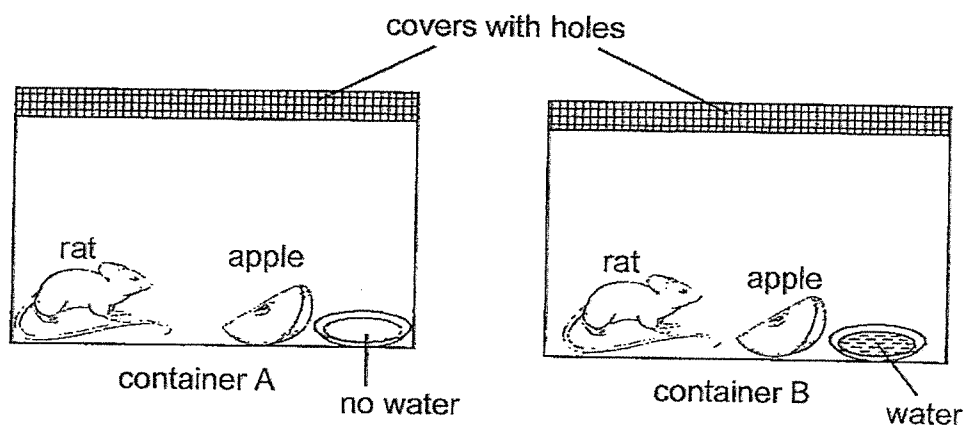
Marks : / 2

SECTION B : [14 marks]

For questions 9 to 12, write your answers in this booklet.

The number of marks available is shown in the brackets [] at the end of each question or part-question.

9. The diagrams below show two containers, A and B containing a rat each.



- (a) Why were covers with holes used for the containers? [1]

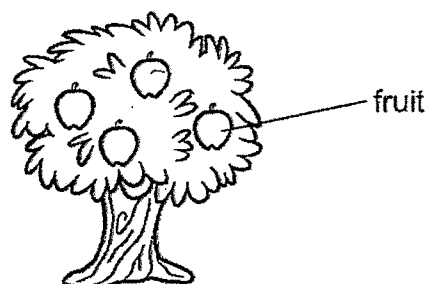
- (b) Someone knocked on the container. During this time, the rats jumped and moved away from the knocking. What characteristics of living things did the rats show? [1]

- (c) The rat in one of the containers died after 1 week. In which container, A or B, did the rat die? Explain your answer. [2]

Marks:

/ 4

10. Jason went for a walk along the park and spotted a tree. He drew the tree as shown below.



- (a) State which group of plants the tree above belongs to. [1]

- (b) Give a reason for your answer in (a). [1]

- (c) State the difference between how the tree and a fern reproduce. [1]

Marks:

/ 3

11. Raine observed an animal during her trip to the zoo and made the following statements about the animal.

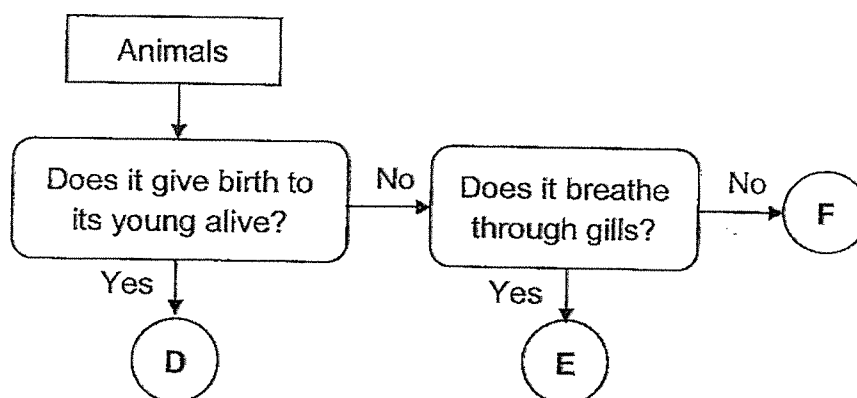
- Animal C lives on land.
- Animal C is cold-blooded.
- Animal C has a dry scaly skin as its outer covering.

- (a) (i) Which animal group does animal C belong to? [1]

Animal group: _____

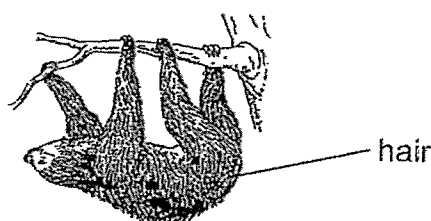
- (ii) State one other characteristic that animals in the same animal group as animal C have. [1]

Study the flowchart below.



- (b) (i) Based on the flowchart, state one difference between animals E and F. [1]

- (ii) Observe the animal shown below.

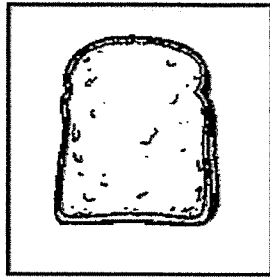


Based on your observations, which animal, D, E or F would this animal most likely be? [1]

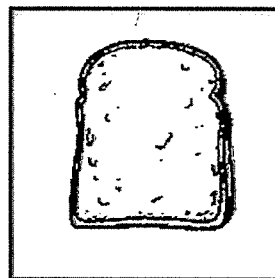
Marks:

/ 4

12. Rahul conducted an experiment as shown below. There were two similar bread slices, S and T. He sprinkled some water on bread S. Then, he placed both breads in a bag and left them next to a window.

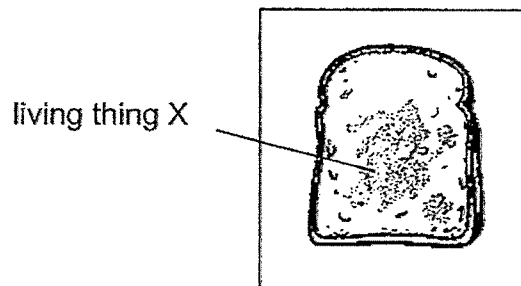


Bread S with water sprinkled



Bread T with water removed

After a week, he spotted grey living thing X growing on one of the breads as shown below.



- (a) What is the grey living thing X? [1]

- (b) Which bread S or T would have living thing X growing on it? [1]

- (c) Give a reason why living thing X grew on one bread and not the other. [1]

Marks:

/ 3

~ END OF PAPER ~

This is the property of Maha Bodhi School.

No part of this should be duplicated without the permission of the school.

YEAR : 2024
 LEVEL : PRIMARY 3
 SCHOOL : MAHA BODHI SCHOOL
 SUBJECT : SCIENCE
 TERM : REVIEW 1

Q1	1	Q2	3	Q3	3	Q4	2
Q5	1	Q6	3	Q7	2	Q8	2

Q9	a) So that air can go into the container b) living things can respond to changes c) the rat in the container has no water to survive and living things need water to survive
Q10	a) flowering plants b) the tree has fruits on it c) tree reproduce from seeds but a fern does not reproduce from a seed. <i>spores</i>
Q11	a) (i)reptiles (ii)they breathe through lungs b) (i) F does not breathe through gills but E does breathe through gills. (ii) D
Q12	a) fungi b) S c) Bread S has water but bread T does not have water and mould needs water to grow.

1
 END