

METHODIST GIRLS' SCHOOL

Founded in 1887



PRACTICE PAPER

PRIMARY 3

SCIENCE

BOOKLET A

Total Time for Booklets A and B: 1 hour 30 minutes

INSTRUCTIONS TO CANDIDATES

Do not turn over this page until you are told to do so.

Follow all instructions carefully.

Answer all questions.

Shade your answers in the Optical Answer Sheet (OAS) provided.

Name: _____ ()

Class: Primary 3. _____

Date : _____

This booklet consists of 16 printed pages including this page.

For each question from 1 to 23, four options are given. One of them is the correct answer. Make your choice (1, 2, 3 or 4). Shade the correct oval on the Optical Answer Sheet (OAS). [46 marks]

- 1 Which of the following observations is correctly matched to the characteristic of living things?

Observation		Characteristic
(1)	A frog lays eggs.	Living things grow.
(2)	A caterpillar changes into a butterfly.	Living things need air, food and water.
(3)	A bird has many feathers.	Living things reproduce.
(4)	A plant grows towards sunlight when placed near the window.	Living things respond to changes.

- 2 The diagram below shows Organism A.

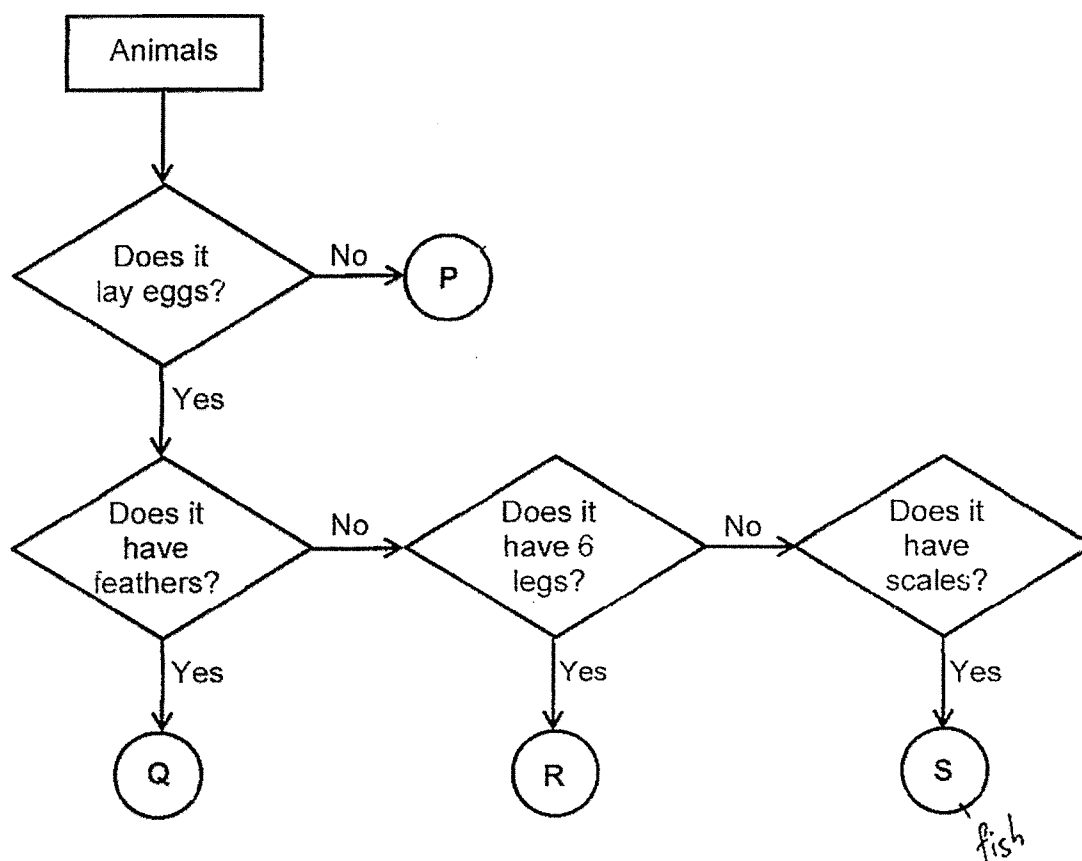


X is found in the gills of Organism A. What is the function of X?
It helps Organism A to _____.

- (1) reproduce
- (2) make food
- (3) grow bigger
- (4) take in water

(Go on to the next page)

3 The flow chart below shows information about 4 different animals, P, Q, R and S.



Which of the following could be the animal groups for animals P, Q, R and S?

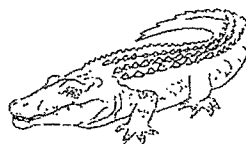
	Animal P	Animal Q	Animal R	Animal S
(1)	Mammals	Birds	Insects	Fish
(2)	Amphibians	Mammals	Fish	Birds
(3)	Amphibians	Mammals	Fish	Reptiles
(4)	Mammals	Birds	Amphibians	Insects

(Go on to the next page)

4 Study the animals below.



salamander

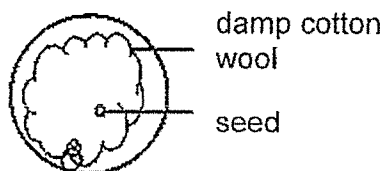


crocodile

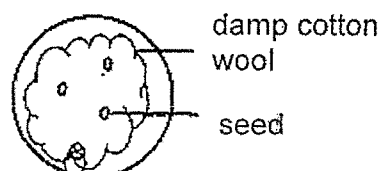
Based on the diagram above, how are the animals similar?

- (1) They have scales.
- (2) They breathe through their gills.
- (3) They reproduce by laying eggs.
- (4) They are warm-blooded animals.

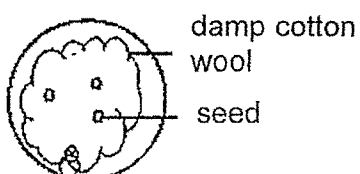
5 Kok Song wanted to find out if seeds need warmth to grow. He prepared four set-ups as shown below.



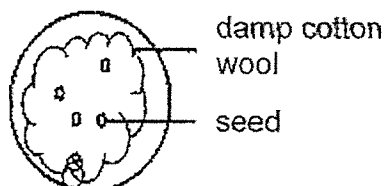
A: Placed near the window



B: Placed in the fridge



C: Placed near the window



D: Placed in the fridge

Which 2 set-ups should he use for his experiment?

- (1) A and B
- (2) B and C
- (3) A and C
- (4) C and D

(Go on to the next page)

- 6 The characteristics of three organisms P, Q and R are given in the table below.

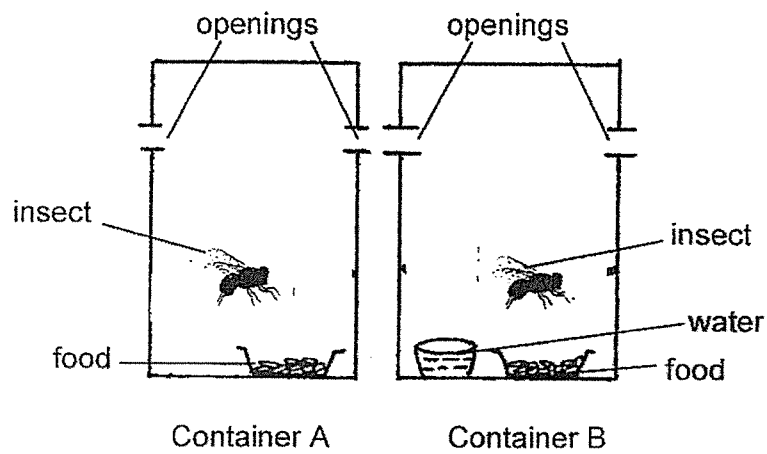
	Organisms		
Characteristics	P	Q	R
Needs light to make food	Yes	No	No
Depends on other organisms for food	No	Yes	Yes
Reproduces by spores	Yes	Yes	No

From the table above, which of the following organisms are correctly represented by the organisms P, Q and R?

	Bacteria	Ferns	Fungi
(1)	P	Q	R
(2)	Q	R	P
(3)	R	P	Q
(4)	Q	P	R

(Go on to the next page)

- 7 Ahmad conducted an experiment by placing two similar insects into two transparent containers as shown below.



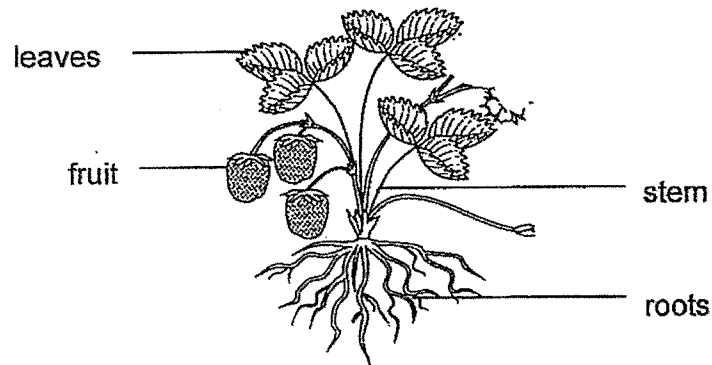
After 4 days, the insect in Container A died.
He was trying to find out if living things need _____ to survive.

- (1) air
- (2) food
- (3) water
- (4) sunlight

(Go on to the next page)

7

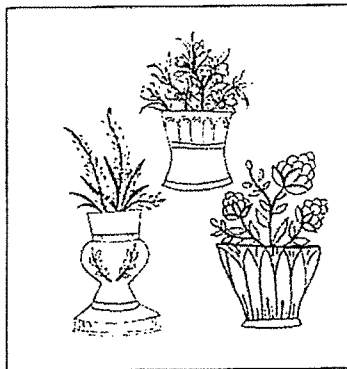
8 Judy observed the organism as shown below.



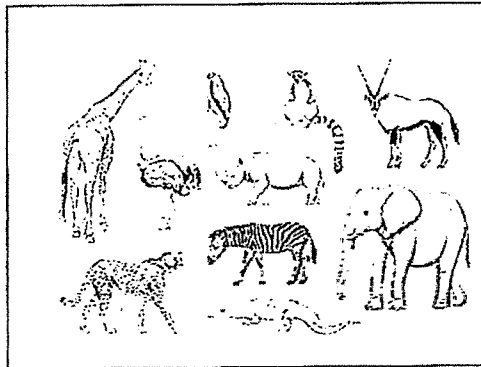
The organism _____.

- (1) is a flowering plant
- (2) reproduces from spores
- (3) cannot make its own food
- (4) has four stages in its life cycle

9 Study the pictures of the living things.



Group A



Group B

Which of the following is a similarity between the living things in group A and B?

- (1) Both reproduce.
- (2) Both make their own food.
- (3) Both have outer body coverings.
- (4) Both can move from one place to another.

(Go on to the next page)

10 Four pupils saw mould growing on a piece of bread and made a statement each.



Boon Teck

Mould reproduces by spores.



Devi

Mould gets its food from the bread.



John

Mould does not need air to grow.



Zaiton

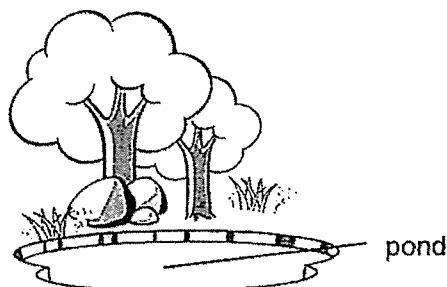
Mould grows faster if the bread is dry.

Who made the correct statements?

- (1) Devi and John
- (2) John and Zaiton
- (3) Boon Teck and Devi
- (4) Boon Teck and Zaiton

(Go on to the next page)

- 11 Peter observed four types of animals, grasshopper, mosquito, butterfly and frog living in the garden. Some eggs were found in the pond in the garden.



The number of days needed for their eggs to hatch is shown below in the table.

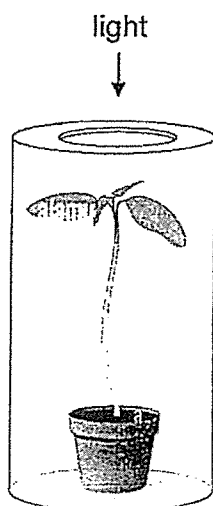
Animals	Number of days needed for eggs to hatch
Mosquito	2
Butterfly	4
Grasshopper	24
Frog	21

On Day 6, what would Peter most likely find in the pond?

- (1) grasshopper nymphs and butterfly larvae
- (2) mosquito larvae and butterfly larvae
- (3) grasshopper nymphs and frog eggs
- (4) frog eggs and mosquito larvae

(Go on to the next page)

- 12 Danny wanted to find out if the amount of light a seedling gets affects the number of days the seedling takes to grow taller by 10cm. He prepared three similar seedlings and conducted an experiment with them

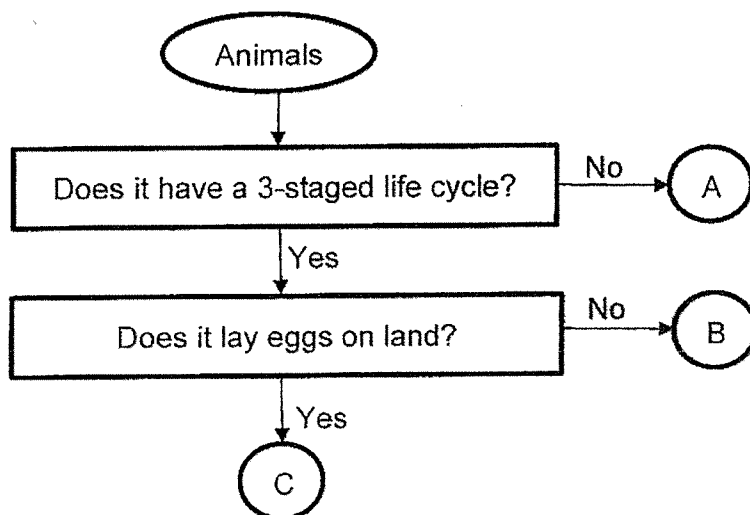


Which of the following is the measured variable for this experiment?

- (1) The number of hours the seedling gets light daily.
- (2) The amount of water given to each seedling daily.
- (3) The height of the seedling at the start of the experiment.
- (4) The number of days the seedling takes to grow taller by 10cm.

(Go on to the next page)

13 Study the flowchart below carefully.



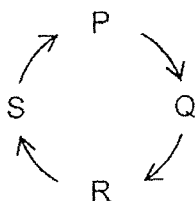
Four children made some statements based on the flowchart above.

- Siti : The young of animal A does not look like its adult.
 Jay : Animals B and C have the larval stage in their life cycles.
 Lee : All the three animals live on land and breathe through their gills.
 Ravi : Animal C lays eggs on land and has three stages in its life cycle.

Whose statements are correct?

- (1) Siti and Jay
- (2) Jay and Lee
- (3) Siti and Ravi
- (4) Lee and Ravi

14 David drew the life cycle of a mosquito as shown below.



Which of the following statements about the mosquito is correct if stage P represents the adult stage?

- (1) At stage Q, it has wings.
- (2) At stage R, it lives in water.
- (3) At stage P, it moults several times.
- (4) At stage S, it starts to lay its eggs in water.

(Go on to the next page)

- 15 Tim wanted to find out which type of material X, Y and Z is the strongest. He dropped a ball made of material X from a height of 50 cm and observed if the ball broke when it reached the ground. If the ball did not break, he dropped it from an even higher height. He repeated the experiment using two balls of the same size and shape made of materials Y and Z respectively.



The results of his experiment are shown below.

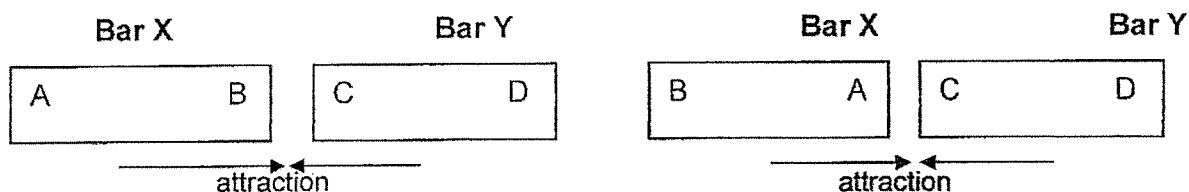
Material	Height from which ball is dropped (cm)			
	50cm	100cm	150cm	200cm
X	Did not break	Broke	-	-
Y	Did not break	Did not break	Did not break	Did not break
Z	Did not break	Did not break	Did not break	Broke

Which of the following variable is changed in this experiment?

- (1) Type of material
- (2) Size and shape of ball
- (3) Whether the ball broke
- (4) Height from which ball is dropped

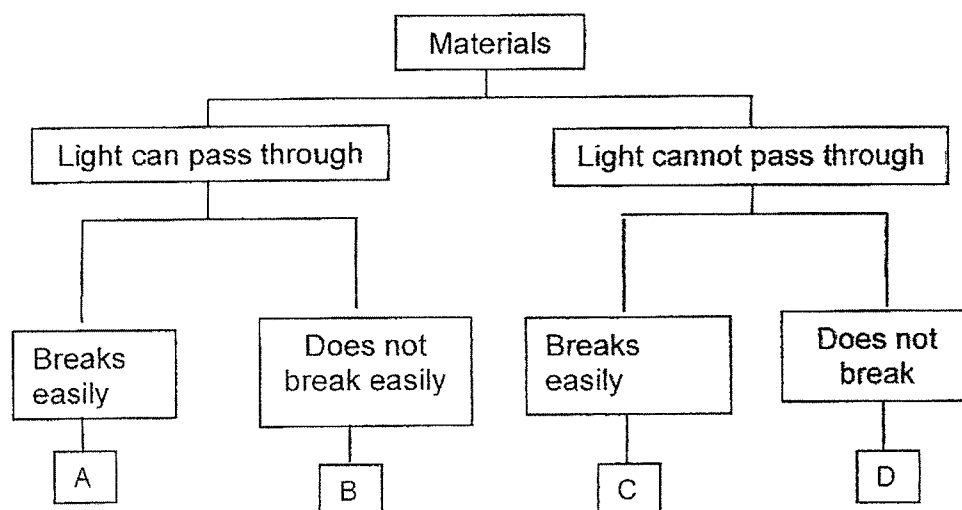
(Go on to the next page)

- 16 The arrows in the diagrams below show what happens when both ends of Bar X is brought near to Bar Y.



What can you conclude from the results?

- (1) Both X and Y are magnets.
 - (2) X is a magnet, Y is a magnetic material.
 - (3) X is a magnet, Y is a non-magnetic material.
 - (4) Like poles of both X and Y are facing each other.
- 17 Amy classifies 4 different materials, A, B, C and D, using a classification chart as shown below.



Which material is suitable for making a school toilet door?

- (1) A
- (2) B
- (3) C
- (4) D

(Go on to the next page)

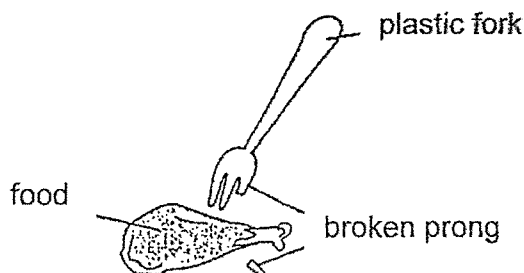
- 18 Janet placed 3 materials, X, Y and Z, into three pails, each filled with 800ml of water. After 10 minutes, she took the materials out and recorded the amount of water left in the pail as shown in the table below.

Materials	Amount of water left (ml)
X	800
Y	0
Z	300

Based on the information above, which one of the following matches the correct material, X or Y or Z to a bath towel and raincoat?

	Bath towel	Raincoat
(1)	X	Y
(2)	Y	X
(3)	X	Z
(4)	Z	X

- 19 Sue Mei used a plastic fork on her food and one of the prongs of the fork broke. Her father suggested she should use a metal fork instead.

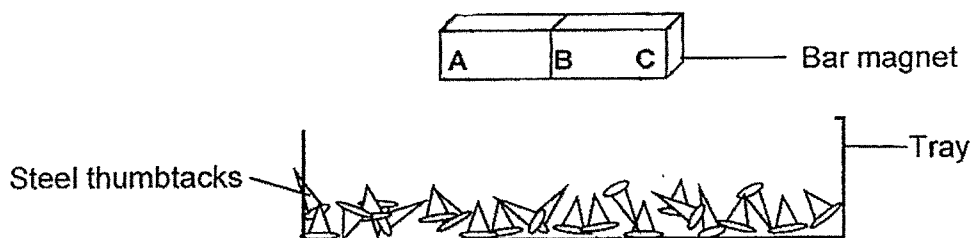


Which of the following statement about metal is correct?

- (1) Metal is stronger than plastic.
- (2) Metal is more fragile than plastic.
- (3) Metal is more flexible than plastic.
- (4) Metal is waterproof but not plastic.

(Go on to the next page)

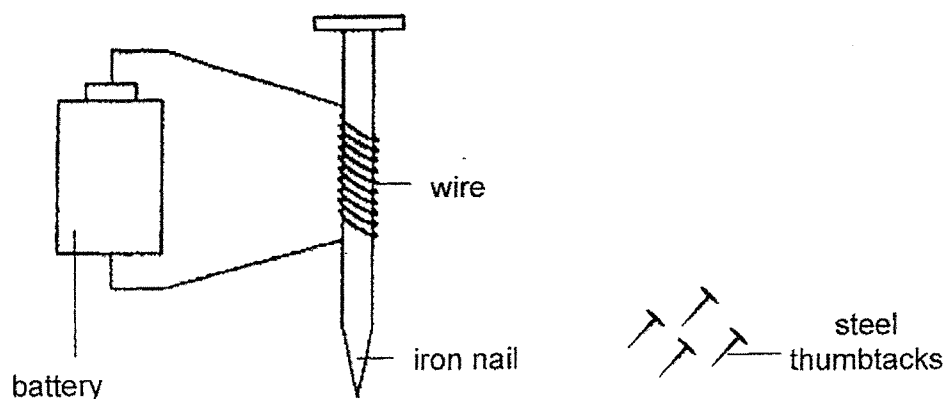
- 20 The diagram below shows a bar magnet lowered onto a tray of steel thumbtacks.



Which of the following most likely shows the number of steel thumbtacks attracted to the magnet at positions A, B and C?

	A	B	C
(1)	4	3	1
(2)	1	3	4
(3)	4	1	4
(4)	3	3	3

- 21 Mike prepared the set-up as shown below.



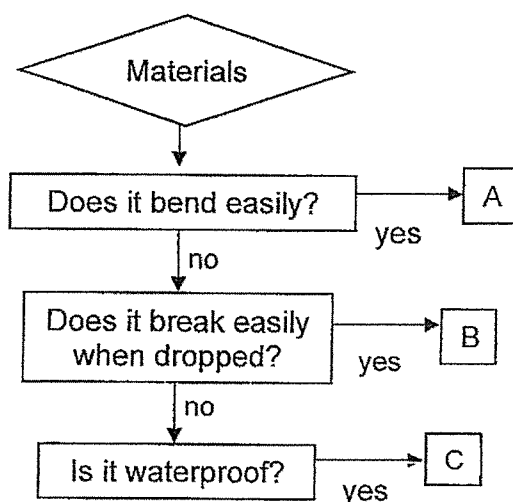
He noticed that some thumbtacks were attracted to the iron nail.

What should Mike do if he wants to attract more thumbtacks?

- (1) Use a longer wire
- (2) Remove the battery
- (3) Change the iron nail to an aluminium nail
- (4) Increase the number of coils of wire around the iron nail

(Go on to the next page)

- 22 The flowchart below shows information about materials A, B and C.



Which of the following represent the materials used to make the objects A, B and C correctly?

	Rubber	Glass	Metal
(1)	A	B	C
(2)	B	A	C
(3)	C	B	A
(4)	A	C	B

- 23 Ted wanted to find out whether the thickness of a material would affect the amount of water it could absorb. He carried out an experiment and recorded the results in the table below.

Piece	Thickness of material X (cm)	Amount of water absorbed by material (ml)
A	1	15
B	2	30
C	4	65
D	5	80

Based on the results in the table above, how does the thickness of Material X affect the amount of water absorbed?

- (1) The thicker the material X, the more the amount of water absorbed.
- (2) The thinner the material X, the more the amount of water absorbed.
- (3) The thicker the material X, the lesser the amount of water absorbed.
- (4) The thickness of the material does not affect the amount of water absorbed.

ANSWER KEY

YEAR : 2024
LEVEL : PRIMARY 3
SCHOOL : MGS
SUBJECT : SCIENCE
TERM : PRACTICE PAPER

Q1	4	Q2	1	Q3	1	Q4	3	Q5	2
Q6	3	Q7	3	Q8	1	Q9	1	Q10	3
Q11	4	Q12	4	Q13	3	Q14	2	Q15	1
Q16	2	Q17	4	Q18	2	Q19	1	Q20	3
Q21	4	Q22	1	Q23	1				

END