

RAFFLES GIRLS' PRIMARY SCHOOL

Name : _____ Index No. _____ Class: P3 _____

SCIENCE

Attn: 1h 15 min

Section A	38
Section B	24
Your score out of 60 marks	
Parent's signature	

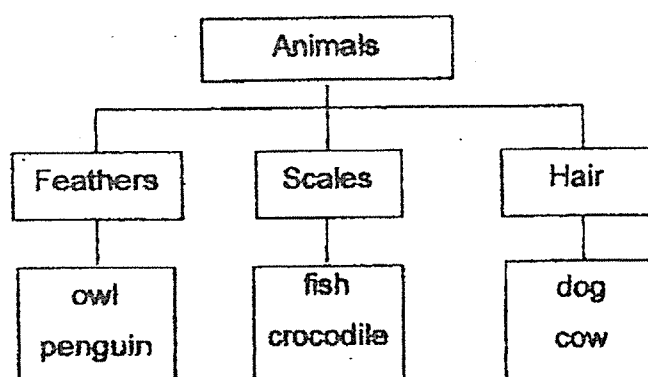
SECTION A (18 x 2 marks)

For each question from 1 to 18, four options are given.

One of them is the correct answer. Make your choice (1, 2, 3 or 4).

Shade the correct oval (1, 2, 3 or 4) on the Optical Answer Sheet (OAS) provided

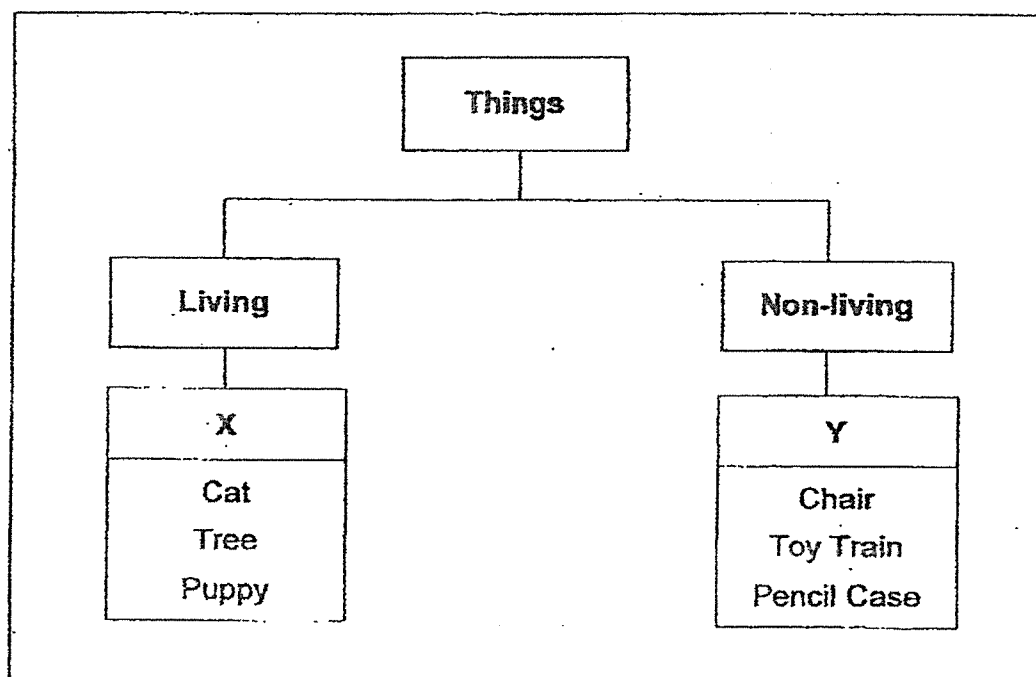
1. Lily grouped some animals as shown in the diagram below.



Which one of the following correctly describes how the animals are grouped?

- (1) Movement
- (2) Number of legs
- (3) Body coverings
- (4) Method of reproduction

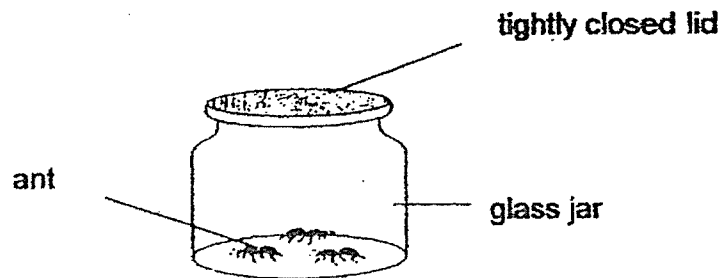
2. In the diagram below, Tom classified some things into group X and Y.



Which one of the following did Tom classify correctly?

	Group X	Group Y
(1)	fried chicken	elephant
(2)	crocodile	worm
(3)	paper boat	rubber snake
(4)	elephant	fishball

3. Ali kept some ants in a glass jar as shown in the diagram below.



What must Ali do to ensure that the ants will survive?

- A Make holes on the lid.
- B Give the ants some food.
- C Give the ants some water.

- (1) A only
- (2) C only
- (3) A and C only
- (4) A, B and C

4. Which one of the following statements show the characteristics of living things?

- A A ball rolled down the stairs.
- B The water bubbled when boiled.
- C A dog barked when it spotted a stranger.
- D Alice could not fit into her dress which she had bought a year ago.

- (1) A and B
- (2) A and D
- (3) B and C
- (4) C and D

5. Three boys made the following statements about an animal.

Alan: It has moist skin.

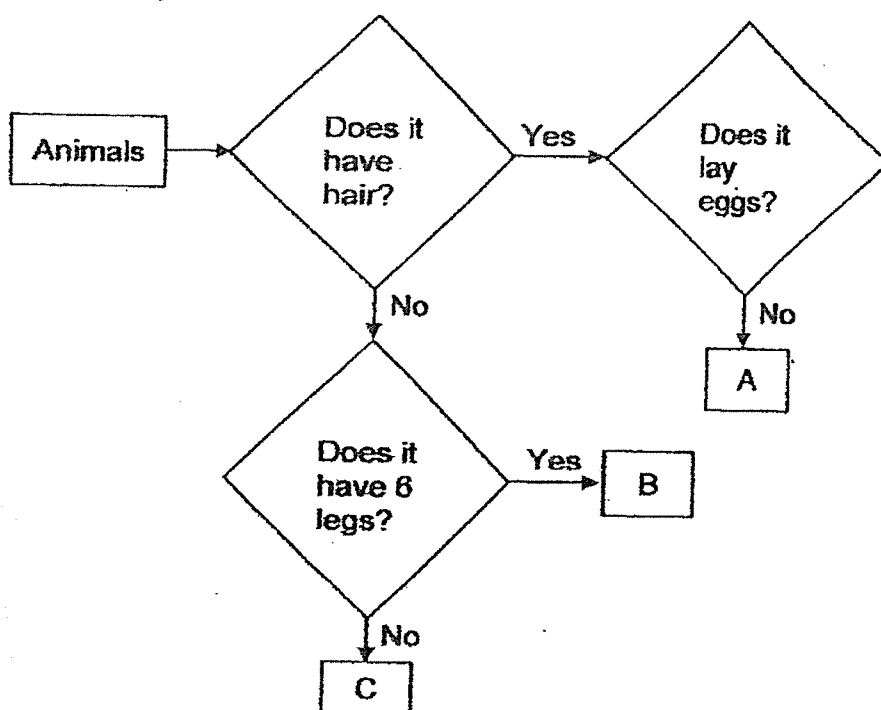
Bala: It reproduces by laying eggs.

Calvin: It can live both on land and in water.

Which group does the animal belong to?

- (1) Birds
- (2) Insects
- (3) Mammals
- (4) Amphibians

6. Study the flowchart below.

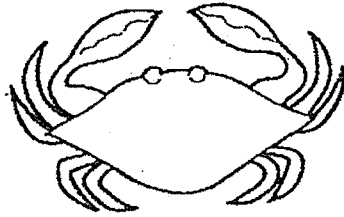


What animal group correctly represents A, B and C?

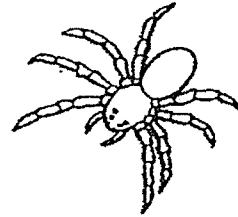
	A	B	C
(1)	fish	amphibian	bird
(2)	mammal	insect	fish
(3)	insect	mammal	fish
(4)	amphibian	fish	bird

7. Based on your observations of the following animals, which one of the following is an insect?

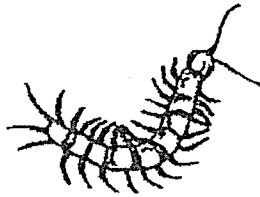
(1)



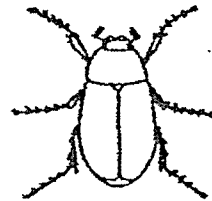
(2)



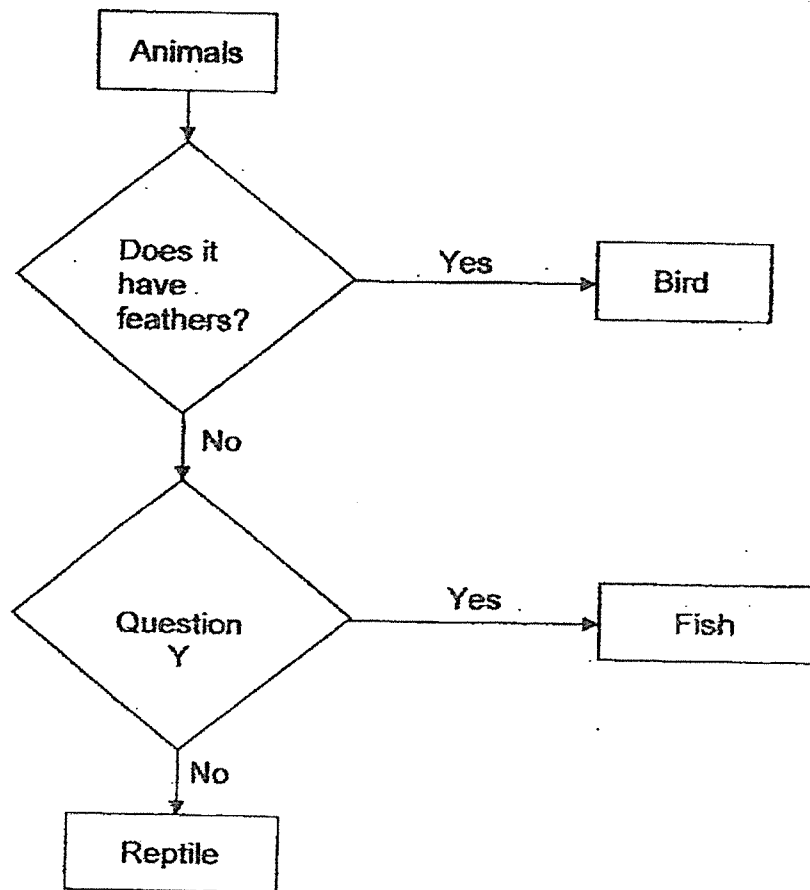
(3)



(4)



8. Study the chart below.



What can Question Y be?

- (1) Does it have hair?
- (2) Does it have gills?
- (3) Does it have 6 legs?
- (4) Does it have scales?

9. Four children made the following statements about plants.

Non-flowering
plants
reproduce by
spores.



Anna

Plants can
respond to
changes.



Ben

All plants bear
fruits.



Carol

Ferns are
classified under
non-flowering
plants.

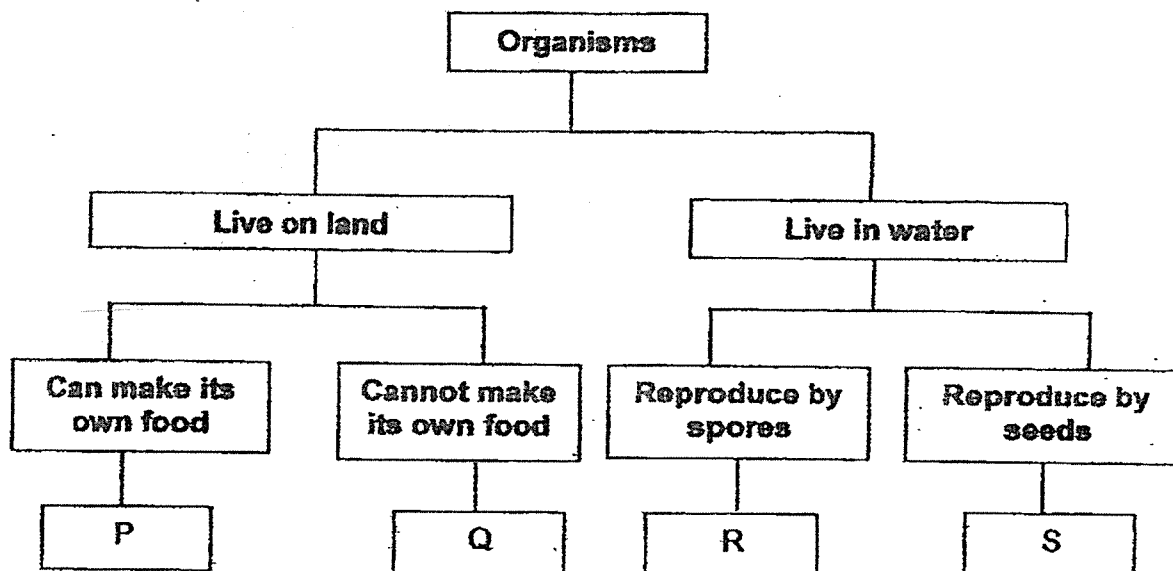


David

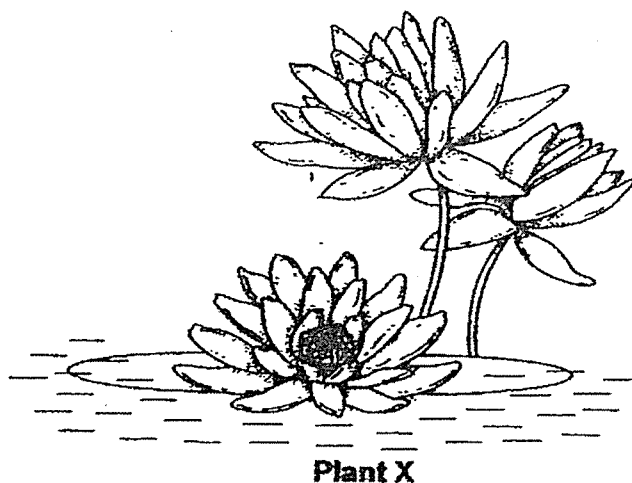
Which of the children made the correct statement(s) about plants?

- (1) Carol only
- (2) Ben and David only
- (3) Anna, Ben and Carol only
- (4) Anna, Ben and David only

10. The classification chart below shows how some organisms are grouped.



Peter wants to classify Plant X as shown below.



Which of the following correctly represents plant X?

- (1) P
- (2) Q
- (3) R
- (4) S

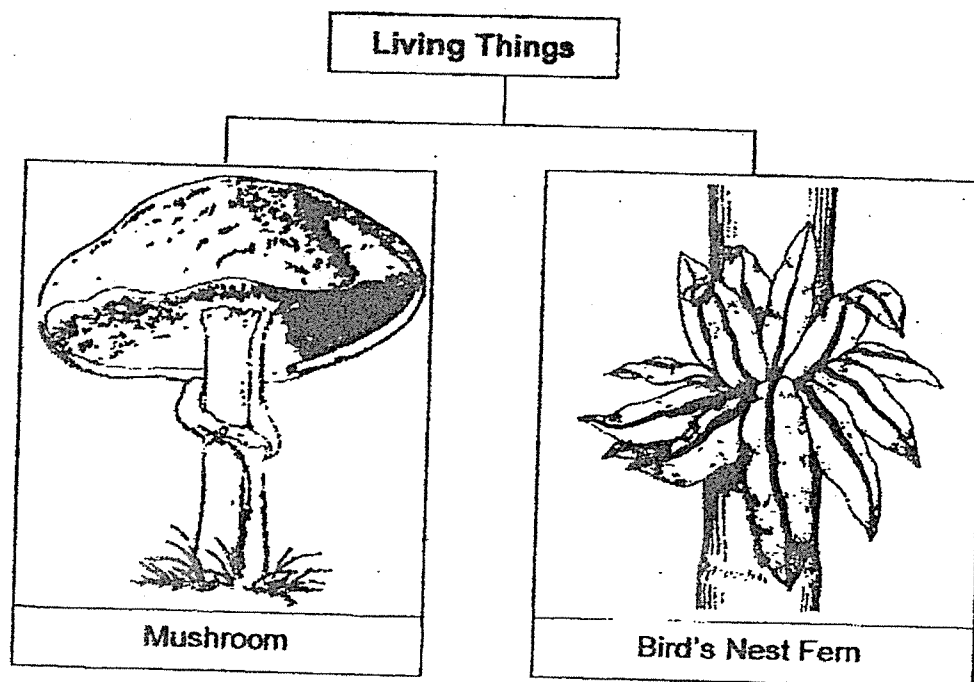
11. Abby recorded the characteristics of 4 organisms, P, Q, R and S, found in the school garden. A tick (✓) shows the presence of the characteristic.

Characteristics	Organisms			
	P	Q	R	S
Does it have spores?	✓	✓		
Does it have leaves?		✓	✓	
Does it have fruits?			✓	
Can it be seen with the naked eyes?	✓	✓	✓	

Which of the following best represents a non-flowering plant?

- (1) P
 - (2) Q
 - (3) R
 - (4) S
12. Which one of the following statements is true about bacteria?
- (1) Some bacteria are useful.
 - (2) Bacteria are non-living things.
 - (3) Bacteria reproduce by spores.
 - (4) Bacteria cannot be grouped under micro-organisms.

13. Study the classification chart below.



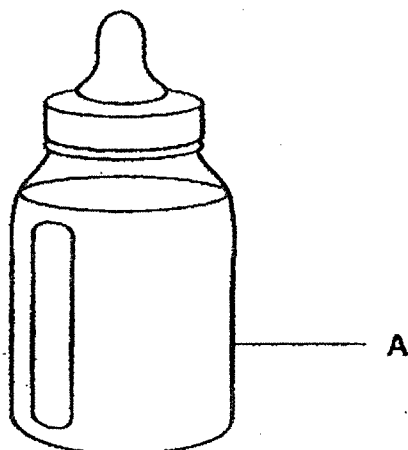
Which of the following correctly describes the difference(s) between a mushroom and a bird's nest fern?

	Mushroom	Bird's Nest Fern
A	cannot reproduce	can reproduce
B	non-flowering plant	flowering plant
C	reproduce by spores	reproduce by seeds
D	cannot make its own food	can make its own food

- (1) B only
- (2) D only
- (3) C and D only
- (4) A and C only

14. Mrs Lim needed to buy a milk bottle for her three-year-old son. Part A of the bottle is made up of a material with the following properties:

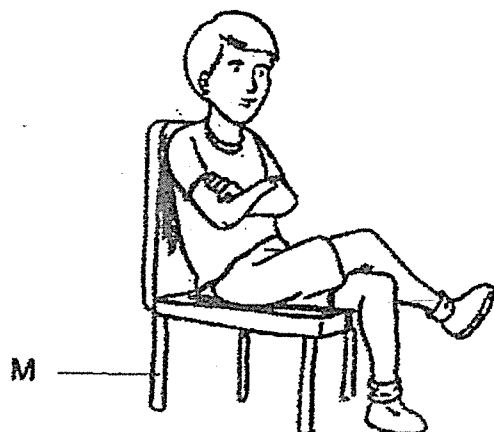
- It cannot break easily.
- Able to see how much milk was left.



Which material is most suitable to make part A of the milk bottle?

- (1) glass
- (2) metal
- (3) plastic
- (4) rubber

15. The picture below shows a boy sitting on a chair.



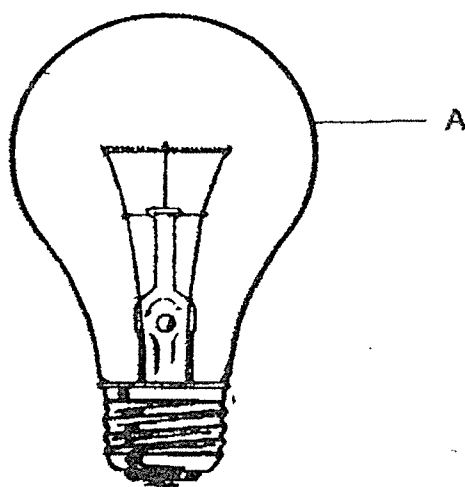
While choosing a material to make M, which of the following properties must be considered to support the mass of the boy?

- (1) strength
- (2) flexibility
- (3) waterproof
- (4) degree of transparency

16. Susan listed the properties of four materials, P, Q, R and S, as shown in the table below. A tick (✓) shows the presence of the property.

Property	Materials			
	P	Q	R	S
Is it light?	✓			✓
Is it flexible?	✓	✓	✓	
Is it waterproof?	✓	✓		✓
Is it transparent?			✓	✓

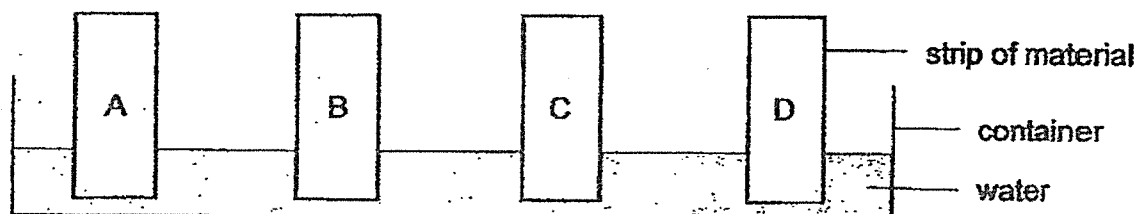
The diagram below shows a light bulb.



Which material is most suitable to make part A of the light bulb?

- (1) P
- (2) Q
- (3) R
- (4) S

17. Mary conducted an experiment to find out the amount of water absorbed by four similar strips of materials A, B, C and D, of the same size and thickness. She placed the four strips in a container of water for half an hour.



The table below shows the results.

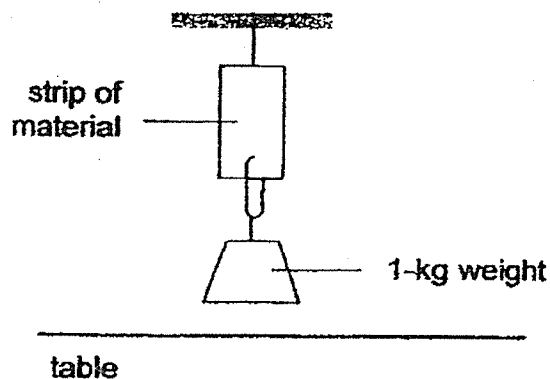
Material	Mass at first (g)	Mass after half an hour (g)
A	2	4
B	2	5
C	2	2
D	2	3

Mary wanted to choose a suitable material for making a pair of gloves to keep her hands dry while washing the dishes.

Based on the results above, which material is most suitable to make the gloves?

- (1) A
- (2) B
- (3) C
- (4) D

18. Eliza conducted an experiment as shown below.



She added 1-kg weights to different strips of materials, K, L, M and N. She counted the number of 1-kg weights that can be added to each strip before it started to tear.

She recorded the results as shown in the table below.

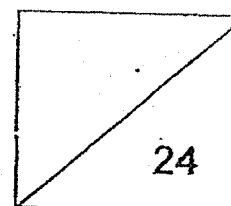
Material	Number of 1-kg weights added before the strip started to tear
K	6
L	3
M	4
N	10

Which of the following statements is correct?

- (1) Material N is the weakest.
- (2) Material L is the strongest.
- (3) Material K is stronger than Material L.
- (4) Material M is weaker than Material L.

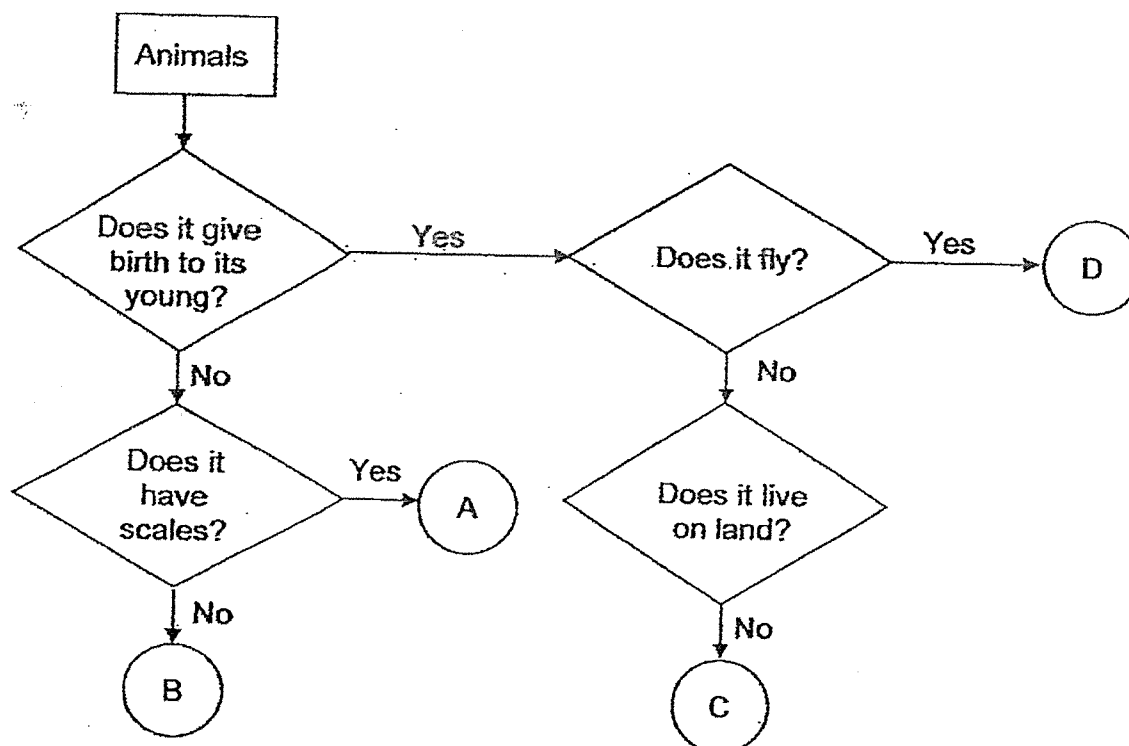
Name: _____ ()

Class: P 3 ()

**SECTION B (24 marks)**

For questions 19 to 30, write your answers clearly in the spaces provided. The number of marks available is shown in brackets [] at the end of each question or part question.

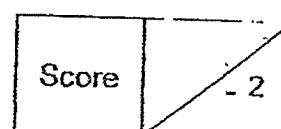
19. The flow chart below shows how four animals, A, B, C and D, are being grouped.



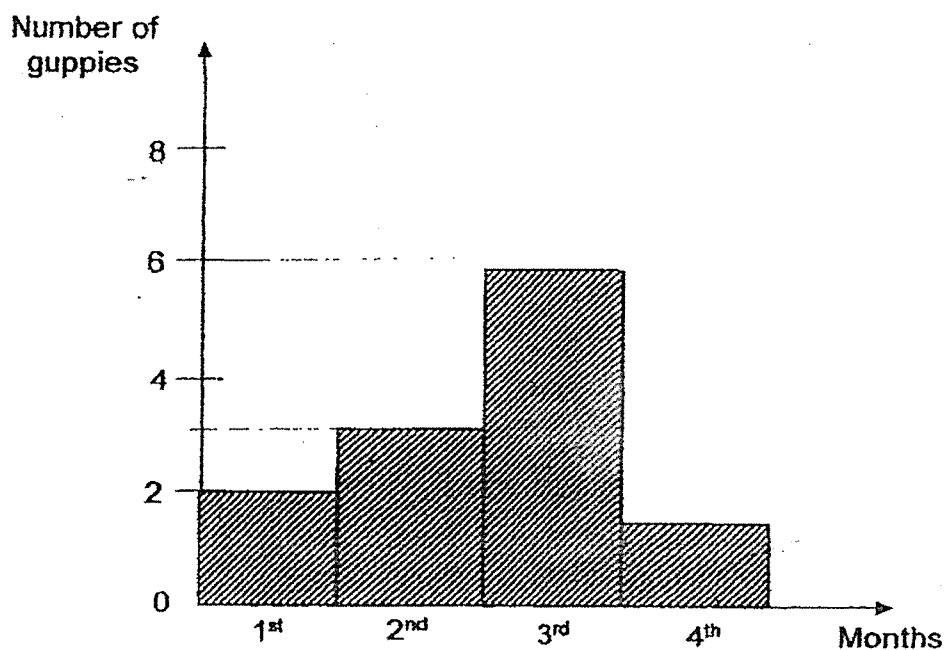
- (a) Name the two characteristics of animal D. [1]

i) _____
 ii) _____

- (b) State one common characteristic between animals A and B. [1]



20. The graph below shows the changes in the number of guppies in a fish tank over four months. The guppies were provided with sufficient air, food and water.



- (a) What does the change in number of guppies in the first three months tell us about the characteristic of a living thing? [1]

- (b) The owner did not add or remove any guppies. State a possible reason for the decrease in the number of guppies in the fourth month. [1]

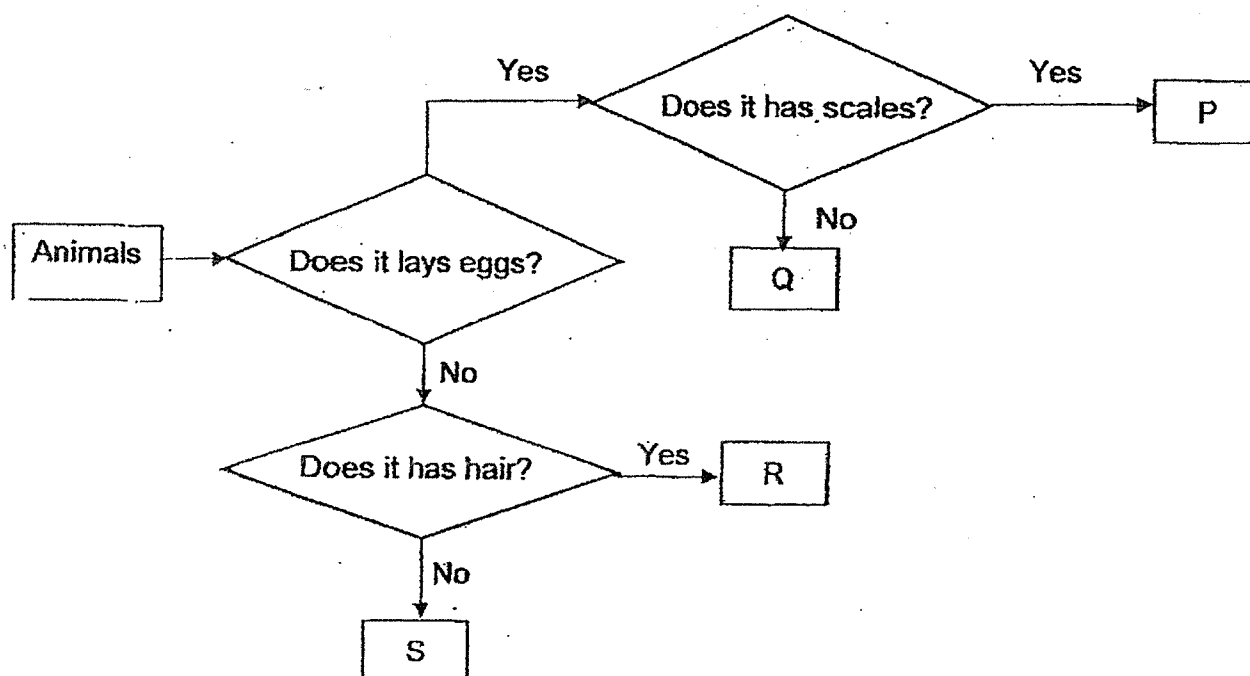
Score	2
-------	---

21. Write 'T' for True and 'F' for False for each of the following statements in the boxes provided. [2]


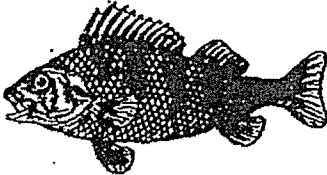
	Statements	True / False
(a)	All birds have an outer body covering of feathers.	
(b)	All insects have three body parts and a pair of wings.	
(c)	Most mammals give birth to their young alive.	
(d)	Most amphibians reproduce by laying eggs in water.	

Score	2
-------	---

22. Study the flow chart below.

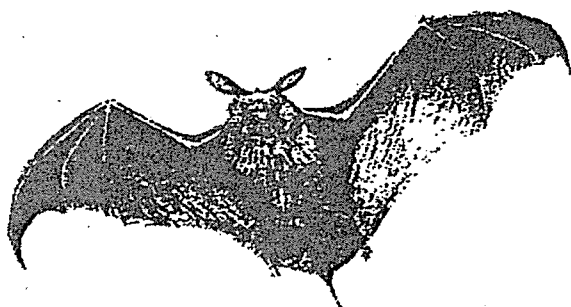


Based on the flow chart above, identify the animal that can be represented by P, Q, R or S. Write the letters, P, Q, R or S in the blanks below. [2]

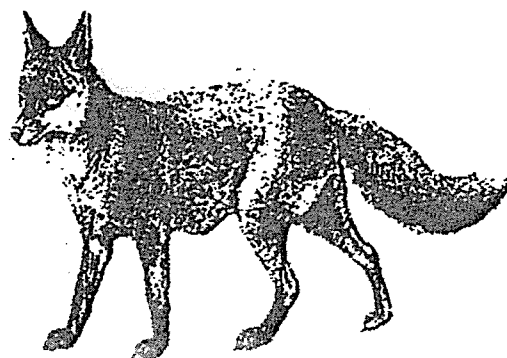
<p>(a)</p> 	<p>_____</p>
<p>(b)</p> 	<p>_____</p>

Score	<div style="border: 1px solid black; width: 100%; height: 100%; position: relative;"> 2 </div>
-------	---

23. Study the animals below.



Animal A



Animal B

Based on your observation of the two animals above, state one similarity and one difference in the physical characteristic between them.

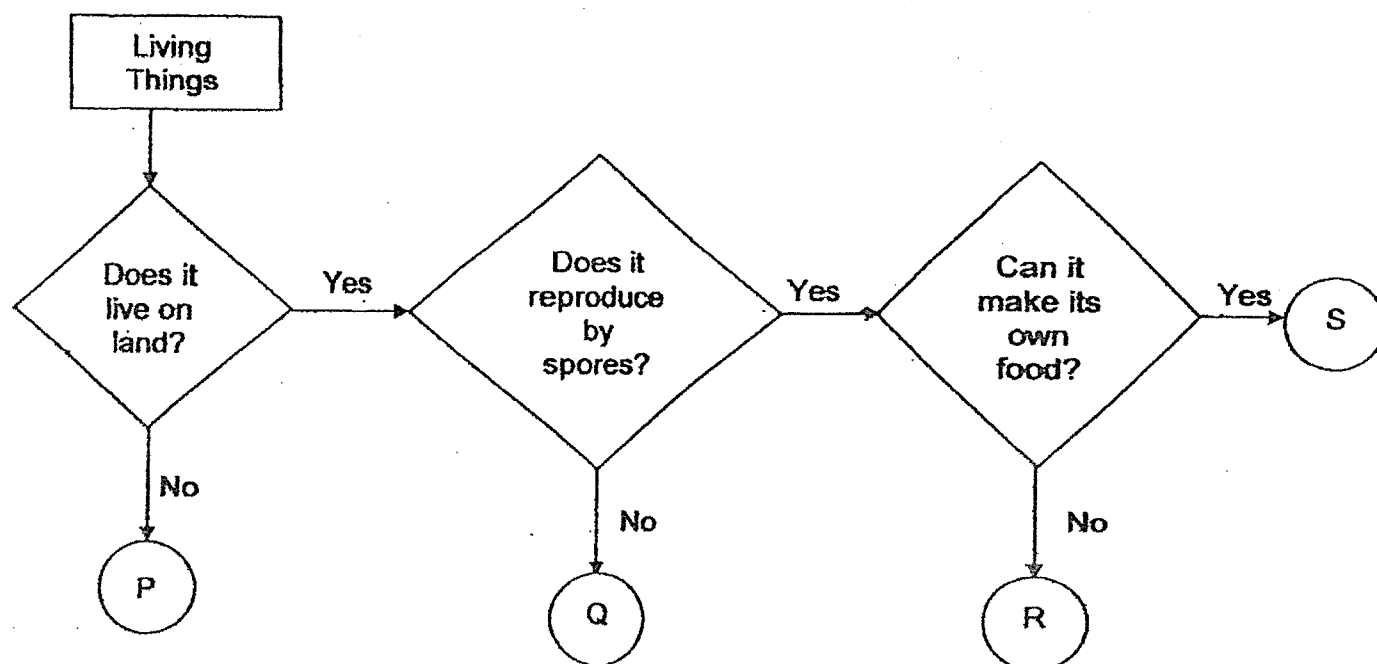
(Do not compare size, colour and movement.)

[2]

Similarity	<hr/> <hr/> <hr/>
Difference	<hr/> <hr/> <hr/>

Score	<div style="border: 1px solid black; width: 40px; height: 40px; position: relative;"> <div style="position: absolute; top: 0; right: 0; text-align: right;">2</div> </div>
-------	--

24. The flow chart below shows how four living things, P, Q, R and S, are being grouped.



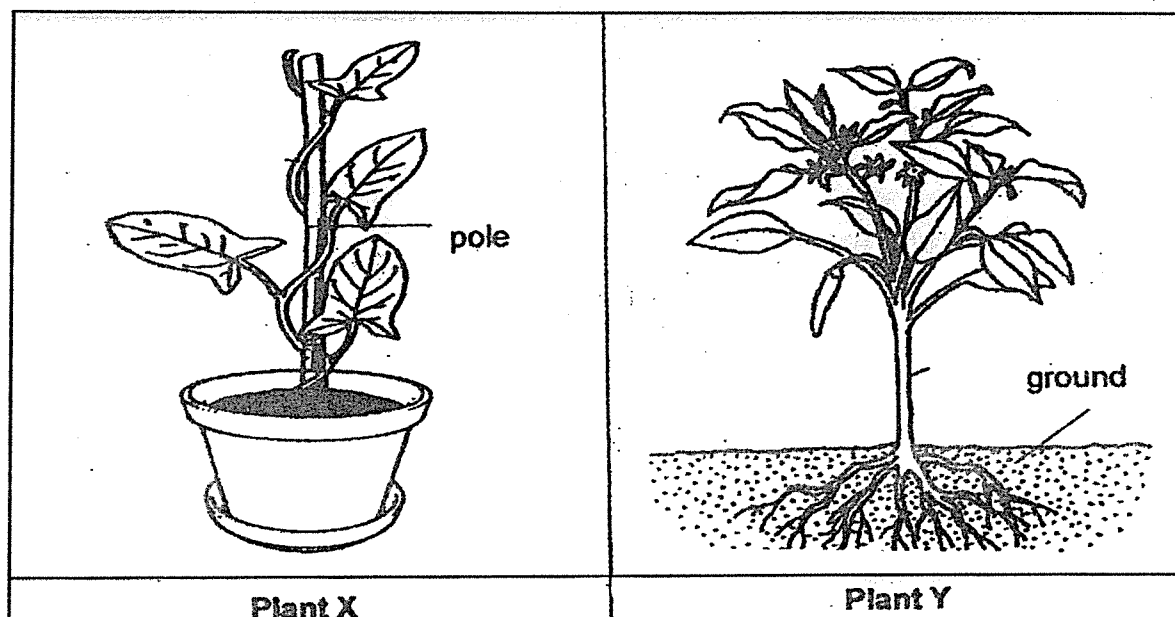
Based on the information above, state two characteristics of R.

[2]

Characteristic 1	<hr/> <hr/> <hr/>
Characteristic 2	<hr/> <hr/> <hr/>

Score	2
-------	---

25. Study Plants X and Y as shown below.



Based on your observations on the plants, state one observable similarity and one difference in the physical characteristics between Plants X and Y.

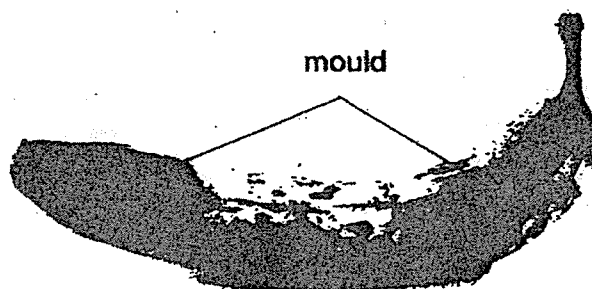
[Do not compare size and shape.]

[2]

Similarity	<div style="border-bottom: 1px solid black; margin-bottom: 5px;"></div> <div style="border-bottom: 1px solid black; margin-bottom: 5px;"></div> <div style="border-bottom: 1px solid black;"></div>
Difference	<div style="border-bottom: 1px solid black; margin-bottom: 5px;"></div> <div style="border-bottom: 1px solid black; margin-bottom: 5px;"></div> <div style="border-bottom: 1px solid black;"></div>

Score	2
-------	---

26. Mdm Tan left a banana in the kitchen for two weeks. She observed black patches on the banana as shown below. She threw the banana as it had turned mouldy.



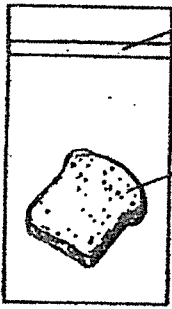
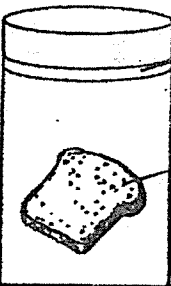


Read the following statements about the characteristics of the moulds found on the banana.

Put a tick (✓) against each statement in the boxes below to show if it is true or false about the moulds on the banana. [2]

	Statements	True	False
(a)	They feed on the banana.		
(b)	They reproduce by seeds.		
(c)	They make its own food.		
(d)	They are fungi.		

Score	2
-------	---

27. Paul conducted an experiment to find out the conditions needed for bread mould to grow. He placed four similar slices of bread in four identical bags under different conditions as shown below.

 <p>sealed bag</p> <p>bread</p>	 <p>opened bag</p> <p>bread with water added</p>
<p>Setup W (in the cupboard)</p>	<p>Setup X (in the cupboard)</p>
 <p>sealed bag</p> <p>bread with water added</p>	 <p>opened bag</p> <p>bread with water added</p>
<p>Setup Y (in the cupboard)</p>	<p>Setup Z (in the freezer)</p>

Based on the information above, answer parts (a) and (b).

- (a) To find out if water is needed for bread mould to grow, he should use set-up _____ and set-up _____ [1]

- (b) To find out if warmth is needed for bread mould to, he should use set-up _____ and set-up _____ [1]

Score	-2
-------	----

28. A swimming board is used to help children while they are learning how to swim as shown below.



swimming board

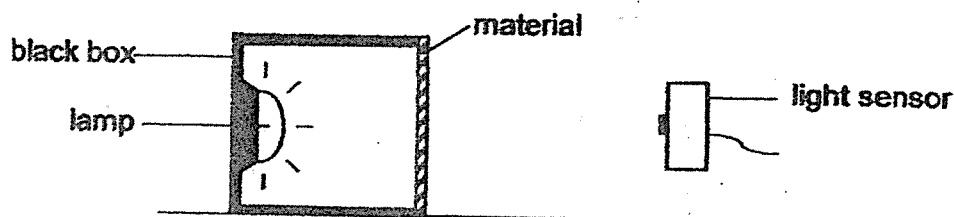
State two properties of the material that are taken into consideration when it is chosen to make into a swimming board [2]

Property 1: _____

Property 2: _____

Score	2
-------	---

29. Olivia carried out an experiment to test the degree of transparency of three materials, K, L and M, as shown below.

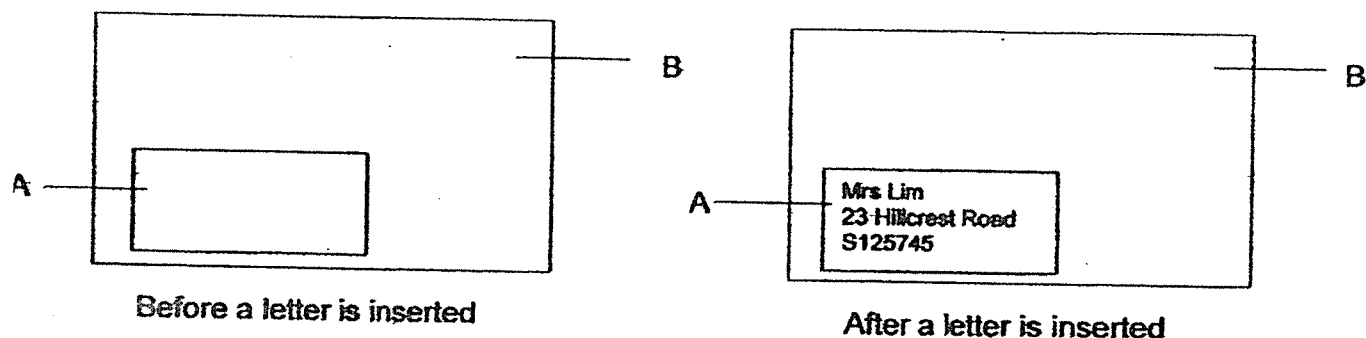


She used a light sensor to measure the amount of light that passed through each material and recorded her results as shown in the table below.

Materials	Amount of light that passes through each material (units)
K	300
L	0
M	250

Olivia wanted to select suitable materials to make an envelope as shown below. The use of each parts, A and B, is provided below:

- A: To be able to see the address of the receiver
B: To not allow anyone to see the content of the letter



Continued on next page

Continued from the previous page

Which of material, K, L or M, is most suitable to make Part A and B of the envelope? Give a reason for your answer. [2]

(a) Part A:

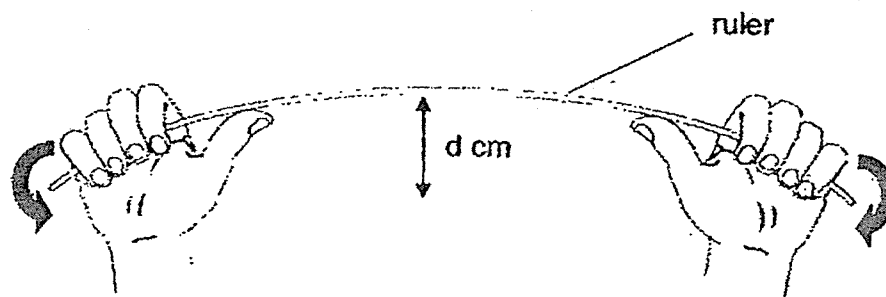
Reason:

(b) Part B:

Reason:

Score	<div>2</div>
-------	--------------

30. Cindy had three strips of materials, X, Y and Z. She measured the maximum distance, d cm, each strip could bend.



She recorded the results as shown in the table below.

Material	Distance d (cm)
X	20
Y	1
Z	5

- (a) Based on the observations, rank the materials, X, Y and Z, starting from the material that is the most flexible. [1]

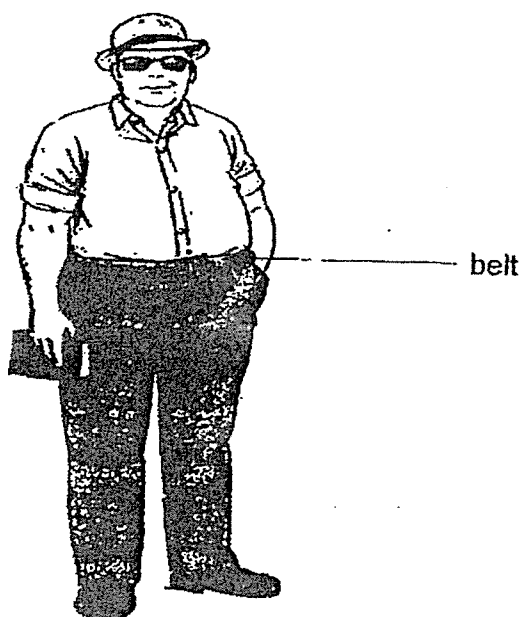
most flexible
→
least flexible

Continued on next page

Score	<div style="border-bottom: 1px solid black; height: 100%;"></div>
-------	---

Continued from previous page

- (b) Mr Tan wears a belt around his waist to support the loose trousers as shown in the diagram below.



Which material, X, Y or Z, is most suitable to be used to make a belt?
Give a reason for your answer.

[1]

End of Paper

Score	1
-------	---

ANSWER KEY

LEVEL : PRIMARY 3

SCHOOL : RAFFLES GIRLS' PRIMARY SCHOOL

SUBJECT : SCIENCE

SECTION A

Q1	3	Q2	4	Q3	4	Q4	4	Q5	4
Q6	2	Q7	4	Q8	2	Q9	4	Q10	4
Q11	2	Q12	1	Q13	2	Q14	3	Q15	1
Q16	4	Q17	3	Q18	3				

SECTION B

Q19a) i: It gives birth to its young.

ii: It has wings

b). *Animals A and B do not give birth to its young.*

Q20a) It tells us that living things reproduce.

Q20b) A possible reason may be because some guppies died.

Q21) a: T b: F c: T d: T

Q22) a: R

b: P

Q23) Similarity: Both have hair.

Difference: Animal A can wings but Animal B does not.

**Q24) Any 2 of the 3: It lives on land
It reproduces by spores
It cannot make its own food**

**Q25) Similarity: Both have leaves/ Both are land plants/ Both have stem
Difference: Plant X has a weak stem but plant Y has a strong stem**

**Q26) a: True
b: False
c: False
d: True**

Q27a) set-up W and set-up Y

Q27b) set-up Z and set-up X

**Q28) Property 1: Waterproof
Property 2: Ability to float**

**Q29a) Part A: Material K
Reason: K allows the most light to pass through and Part A needs as much light as possible to pass through.**

**Q29b) Part B: Material L.
Reason: L does not allow any light to pass through and Part B does not need any light to pass through.**

Q30a) X, Z, Y

Q30b) Material X. It is the most flexible and can bend the most.

END

2