

Anglo-Chinese School (Junior)



BITE-SIZED ASSESSMENT 1

PRIMARY 3

SCIENCE

Friday

40 min

Name: _____ () Class: 3.() Parent's Signature: _____

INSTRUCTIONS TO PUPILS

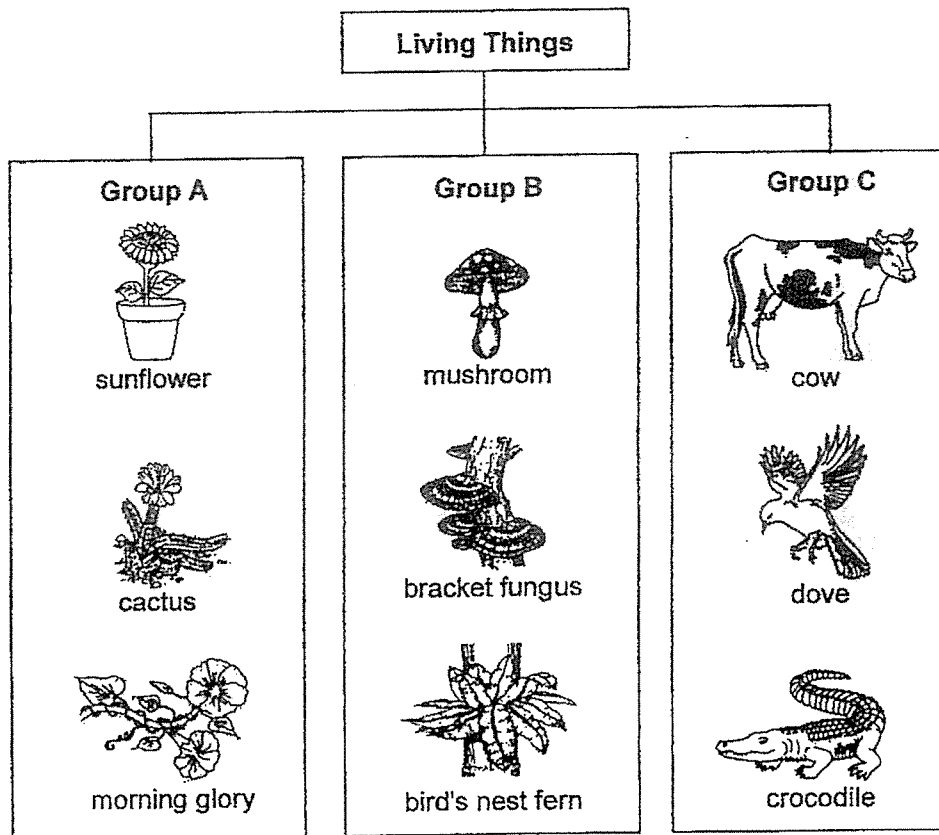
- 1 Do not turn over the pages until you are told to do so.
- 2 Follow all instructions carefully.
- 3 There are 9 questions in this booklet.
- 4 Answer ALL questions.
- 5 The marks are given in the brackets [] at the end of each question or part question.

Question Paper	Possible Marks	Marks Obtained
Total	20	

This question paper consists of 8 printed pages (inclusive of cover page).

Answer questions 1 to 9. The number of marks available is shown in the brackets [] at the end of each question.

1. Study the classification table. There is one living thing that has been **wrongly** classified. Circle it. [1]



2. Match the correct characteristics of living things to the descriptions by drawing lines to connect the dots. [2]

Characteristics of living things

Living things can grow.

Living things can reproduce.

Living things can move by themselves.

Living things can respond to changes around them.

Descriptions

A man's weight increases from 60 kg to 70 kg.

A butterfly laying eggs on a leaf.

A boy smiling after a teacher praises him.

An old lady walking in a park.

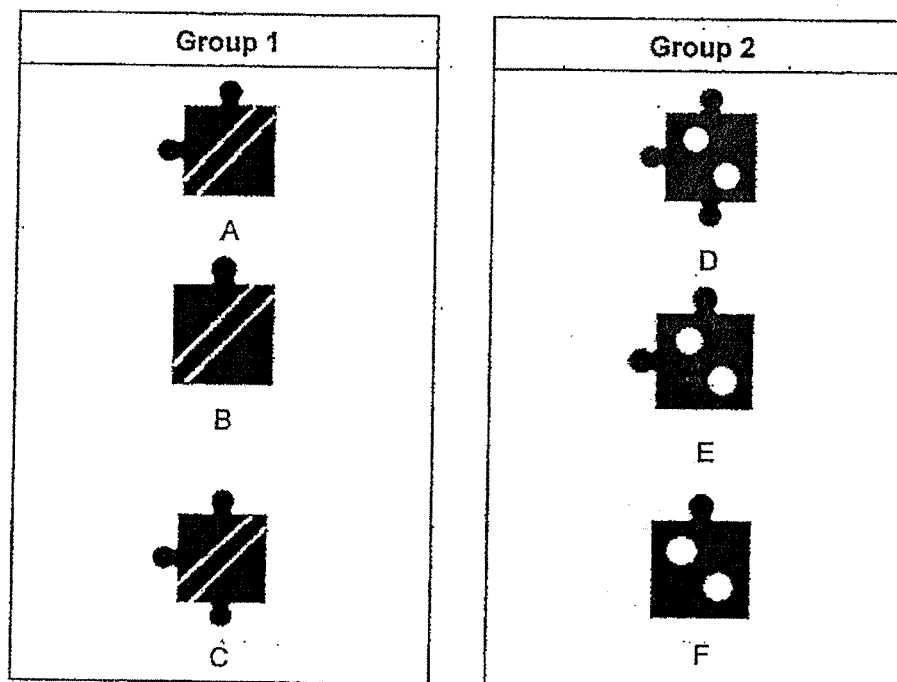
Score.

3

3. Jigsaw pieces can have lobes on them, as shown in the diagram.



Mitchel classified six jigsaw pieces into two equal groups.

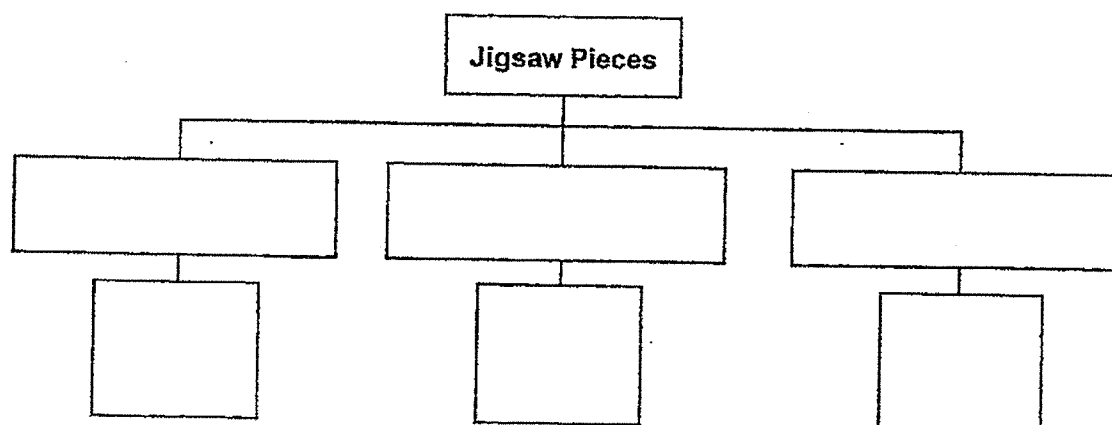


- (a) What characteristic did Mitchell use to classify the jigsaw pieces? [½]

- (b) Mitchel now wants to classify the same six jigsaw pieces with different number of lobes equally into three groups instead.

(i) Write the letters, A, B, C, D, E and F, representing the jigsaw pieces, in the boxes below.

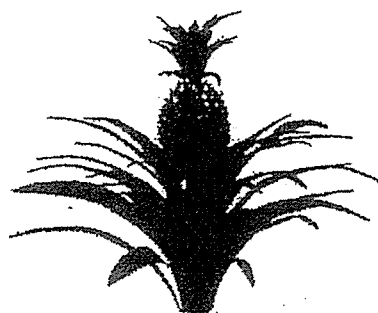
(ii) Provide suitable sub-headings for each group. [1½]



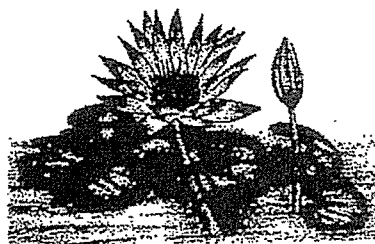
Score	2
-------	---

4

4. The diagram shows two plants.



pineapple plant

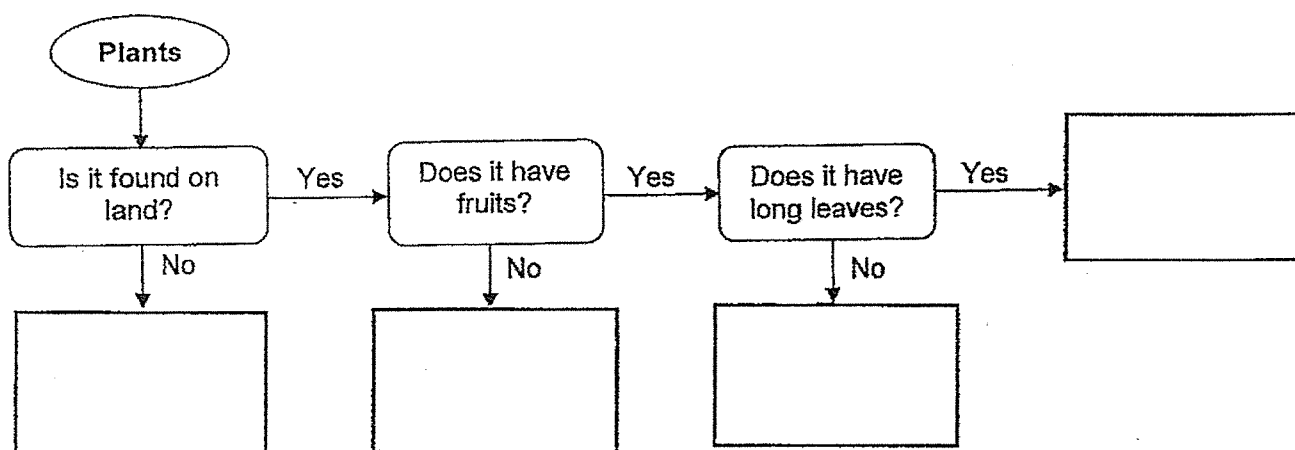


water lily

- (a) Which of the following statements about the two plants are true? Write 'T' for each statement that is true and 'F' for each statement that is false. [2]




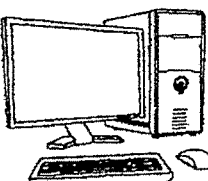
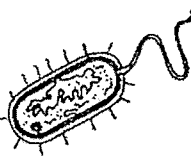
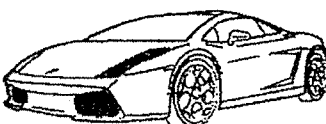
	Statement	'T' or 'F'
(i)	Pineapple plant reproduces from spores.	
(ii)	Only the water lily is a flowering plant.	
(iii)	Both plants have stems and leaves.	
(iv)	Pineapple plant can make its own food but water lily cannot.	

- (b) Based on your observations of two plants in the pictures above, where should the pineapple plant and the water lily be found in the flow chart given below? Write 'pineapple plant' and 'water lily' in the correct boxes. [1]



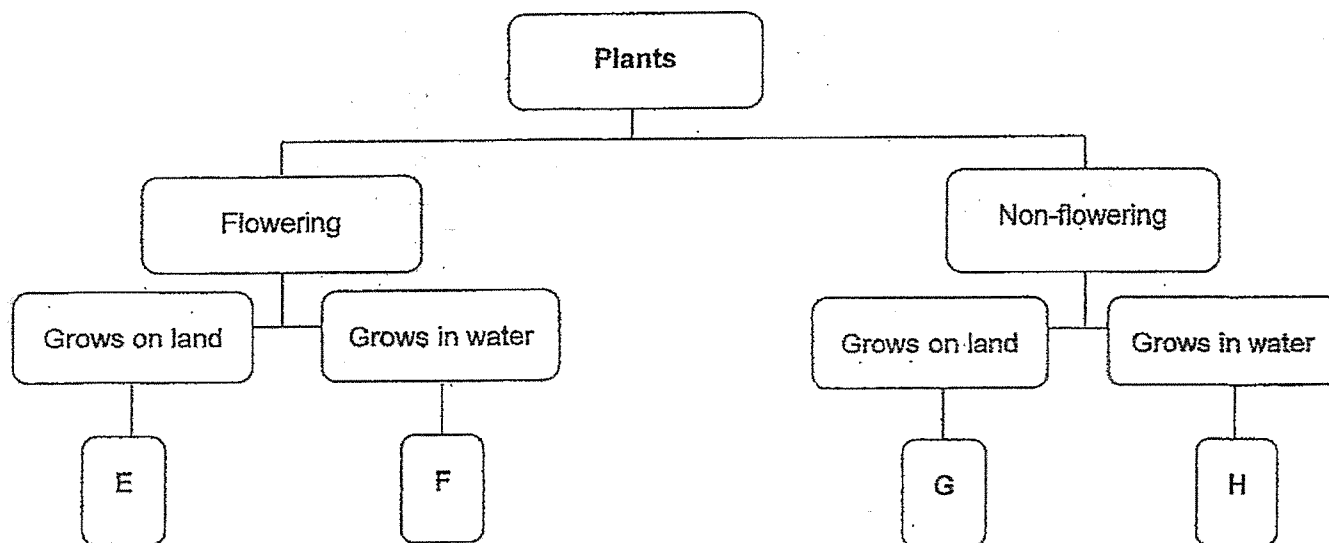
Score	3
-------	---

- 5.(a) Study the classification table. Give suitable sub-headings for each group in the boxes provided. [1]

Things	
(i) _____	(ii) _____
 rabbit	 soccer ball
 orchid plant	 computer
 bacteria	 car

- (b) State a difference between the characteristics of the things in the two groups in the table above. [1]

6. Study the classification chart.



- (a) Based on the information given in the classification chart, classify plants E, F, G and H in the table shown by placing a tick (✓) in the correct boxes. [2]

Plant \ Characteristic	E	F	G	H
Able to bear fruits				
Grows on land				

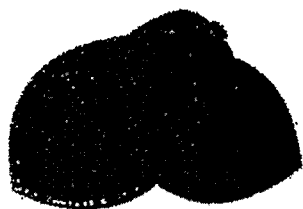
- (b) The diagram shows a coconut plant.



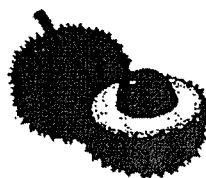
Adrian said that coconut trees should be placed in Group F in the classification chart. Do you agree with him? Explain why. [1]

Score	3
-------	---

7. The diagrams show two fruits.



Fruit X



Fruit Y

Compare the two fruits according to their characteristics given in the table. Write your answers in the table below. [2]

Characteristic	Fruit X	Fruit Y
Number of seeds		
Texture of skin		

8. Johnny prepared three identical sealed plastic containers, X, Y and Z with 100g of food and 100ml of water in each of them. He placed one different thing in each of the containers.

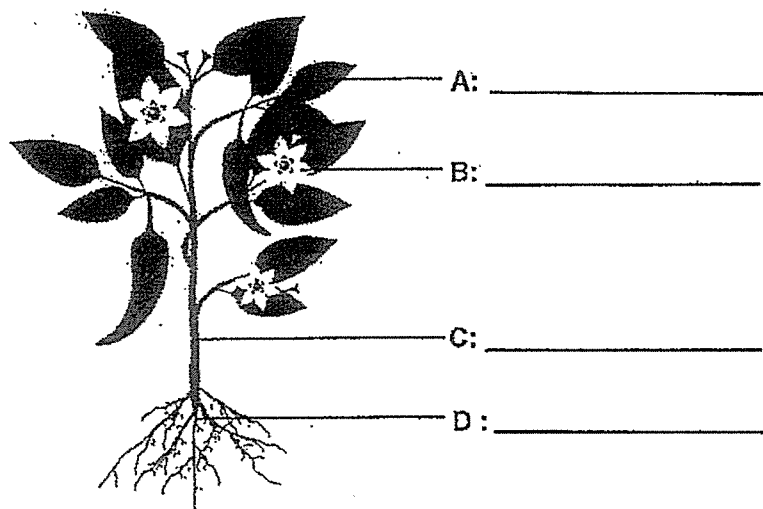
He recorded the amount of food and water left in each container at the end of three days.

Container	Amount of water (ml)	Amount of food (g)
X	43	33
Y	28	38
Z	100	100

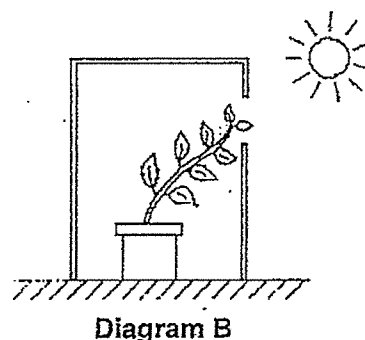
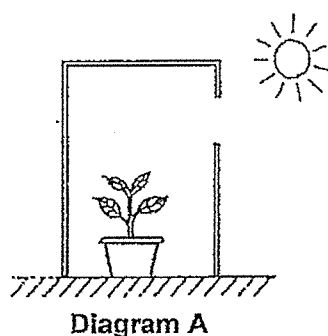
- (a) Based on the above information, which container(s) has/have a living thing? [1]
- _____
- (b) On the third day, Johnny's teacher told him to poke some holes on the containers that were chosen in (a). State the specific characteristic of living things that explains why the teacher told him to do so. [1]
- _____
- _____

Score	4
-------	---

9. (a) Label the parts of the plant, A, B, C and D, by writing your answers in the blanks provided. [2]



- (b) Melvin placed a plant into a cardboard box as shown in Diagram A and watered it daily. After a week, he observed some changes in the plant as shown in Diagram B.



What does this experiment show about the plant? Place a tick (✓) in the correct box below. [1]

Characteristic	Tick(✓)
The plant can have young.	
The plant only needs water to grow.	
The plant responds to changes around it.	

~ END OF PAPER ~

Score	3
-------	---

SCHOOL : ANGLO CHINESE SCHOOL
LEVEL : PRIMARY 3
SUBJECT : SCIENCE
TERM : 2024 BITE-SIZED ASSESSMENT 1

1	Circle bird's nest fern
2	<div> <div> Characteristics of living things <div>Living things can grow.</div> <div>Living things can reproduce.</div> <div>Living things can move by themselves.</div> <div>Living things can respond to changes around them.</div> </div> <div> Descriptions <div>A man's weight increases from 60 kg to 70 kg.</div> <div>A butterfly laying eggs on a leaf.</div> <div>A boy smiling after a teacher praises him.</div> <div>An old lady walking in a park.</div> </div> </div>
3	<p>a) According to pattern. b)</p> <div> <div>Jigsaw Pieces</div> <div> <div>1 lobe</div> <div>2 lobe</div> <div>3 lobe</div> </div> <div> <div>B, F</div> <div>A, E</div> <div>C, D</div> </div> </div>
4	<p>a)</p> <ul style="list-style-type: none"> i) F ii) F iii) T iv) F <p>b)</p>

	<div><div>Plants</div><div><div>Is it found on land?</div><div>Yes</div><div>Does it have fruits?</div><div>Yes</div><div>Does it have long leaves?</div><div>Yes</div><div>Pineapple plant</div><div>No</div><div>Water lily</div><div>No</div><div></div><div>No</div><div></div></div></div>															
5a	<div><div>i) living things</div><div>ii) non-living things</div></div>															
5b	All three living things respond to changes but non-living things do not respond to changes.															
6a	<table><tr><td></td><td>E</td><td>F</td><td>G</td><td>H</td></tr><tr><td>Able to bear fruit</td><td>✓</td><td>✓</td><td></td><td></td></tr><tr><td>Grows on land</td><td>✓</td><td></td><td>✓</td><td></td></tr></table>		E	F	G	H	Able to bear fruit	✓	✓			Grows on land	✓		✓	
	E	F	G	H												
Able to bear fruit	✓	✓														
Grows on land	✓		✓													
6b	No. It is because the coconut tree does not grow in the water and the coconut tree grow on land.															
7	<table><tr><td>Characteristic</td><td>Fruit X</td><td>Fruit Y</td></tr><tr><td>Number of seeds</td><td>many seeds</td><td>one seed</td></tr><tr><td>Texture of skin</td><td>smooth</td><td>rough skin</td></tr></table>	Characteristic	Fruit X	Fruit Y	Number of seeds	many seeds	one seed	Texture of skin	smooth	rough skin						
Characteristic	Fruit X	Fruit Y														
Number of seeds	many seeds	one seed														
Texture of skin	smooth	rough skin														
8a	Group X and Y has a living thing in it.															
8b	It is because living things need air to survive.															
9a	<div><div>A: leaf</div><div>B: flower</div><div>C: stem</div><div>D: root</div></div>															
9b	Tick - The plant responds to changes around it.															

