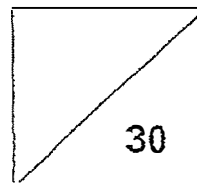




Pei Hwa Presbyterian Primary School  
Mathematics  
Weighted Assessment 1  
Primary 4



Name: \_\_\_\_\_ ( ) Class: \_\_\_\_\_

Date : \_\_\_\_\_ Parent's Signature: \_\_\_\_\_

**Section A: Multiple Choice Questions (10 marks)**

Questions 1 to 6 carry 1 mark each. Questions 7 to 8 carry 2 marks each. For each question, four options are given. One of them is the correct answer. Make your choice ( 1, 2, 3 or 4 ) and write your choice ( 1, 2, 3 or 4 ) in the brackets provided.

1.  $94\ 072 = 90\ 000 + \boxed{\quad ? \quad} + 70 + 2$

What is the missing number in the box?

(1) 40 000

(2) 4000

(3) 400

(4) 40

( )

2. What is the value of digit 7 in 32 718?

(1) 7

(2) 70

(3) 700

(4) 7000

( )





3. Arrange the following numbers from the greatest to the smallest.

58 719	85 917	58 197
--------	--------	--------

	<u>Greatest</u>		<u>Smallest</u>	
(1)	58 197	58 719	85 917	
(2)	58 719	58 197	85 917	
(3)	85 917	58 719	58 197	
(4)	85 917	58 197	58 719	( )

4. Which of the following is not a common factor of 12 and 16?

- (1) 1  
 (2) 2  
 (3) 3  
 (4) 4
- ( )

5.  $3024 \div 4 =$  \_\_\_\_\_

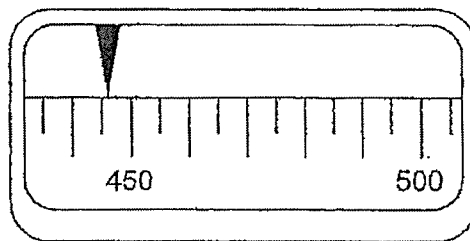
- (1) 751  
 (2) 756  
 (3) 801  
 (4) 1256
- ( )

6. Find the product of 17 and 473.

- (1) 3784
- (2) 7621
- (3) 7971
- (4) 8041

( )

7. The figure shows part of a scale.  
Round the reading shown to the nearest hundred.



- (1) 400
- (2) 440
- (3) 450
- (4) 500

( )

8. An adult ticket cost \$5 and a child ticket cost \$2.  
There were as many children as adults at the funfair.  
The total amount of money collected from the admission tickets was \$9520.  
How many people were at the funfair altogether?

- (1) 680
- (2) 1360
- (3) 1904
- (4) 2720

( )

**Section B: Short-answer Questions (10 marks)**

Questions 9 to 13 carry 2 marks each. Write your answers in the spaces provided. For questions which require units, give your answers in the units stated.

Do not write  
in this space

9. (a) Write thirty-two thousand and eighty in numerals.

Ans: (a) \_\_\_\_\_

- (b) Complete the number pattern.

31 238, 36 238, 41 238, \_\_\_\_\_, 51 238

Ans: (b) \_\_\_\_\_

10. (a) What is the largest multiple of 6 that is smaller than 50.

Ans: (a) \_\_\_\_\_

- (b) What is the common factor of 15 and 24 that is greater than 1.

Ans: (b) \_\_\_\_\_

Do not write  
in this space

11. The mass of a papaya when rounded to the nearest hundred is 300 g.

(a) What is the smallest possible mass of the papaya?

Ans: (a) \_\_\_\_\_ g

(b) What is the greatest possible mass of the papaya?

Ans: (b) \_\_\_\_\_ g

12. Mr Tan made some apple juice.

He drank 320 ml of apple juice and divided the remaining equally into 8 glasses.

Each glass contained 275 ml of apple juice.

How many millilitres of apple juice did he make?

Ans: \_\_\_\_\_ ml

13. Denzel forms 4-digit numbers using each of the digits 1, 2, 5 and 7 once.

*Each of the statements below is either true or false.*

*For each statement, put a tick (✓) to indicate your answer.*

	Statement	True	False
(a)	The greatest possible number he can form is 7521.		
(b)	The smallest possible number he can form is a multiple of 3.		
(c)	He can form 5 different even numbers.		

Do not write  
in this space

**Section C: Long-answer Questions (10 marks)**

Solve each of the following problems. Show all your working and statements clearly. Do not write  
Write your answers and word statements in the spaces provided. in this space

14. Amelia has 9 more marbles than Caleb. She has 12 less marbles than Bala.  
They have 3795 marbles altogether.

(a) How many more marbles does Bala have than Caleb?

Ans: (a) \_\_\_\_\_ [ 1 ]

(b) How many marbles does Caleb have?

Ans: (b) \_\_\_\_\_ [ 2 ]





Do not write  
in this space

15. Paul had 24 more books than Queenie.  
After Queenie gave Paul 60 books, Paul had 7 times as many books as Queenie.  
How many books did Queenie have at first?

Ans: \_\_\_\_\_ [3]

Do not write  
in this space

16. Shop A and Shop B sells the same watch.



- (a) Which shop sells the watch for a lower price?

Ans: (a) Shop \_\_\_\_\_ [ 1 ]

- (b) Jacob bought some watches from Shop B.  
Andre spent the same amount of money as Jacob at Shop A.  
Andre bought 8 more watches than Jacob.  
How many watches did Jacob buy?

(b) \_\_\_\_\_ [ 3 ]

End of Paper

SCHOOL : PEI HWA PRIMARY SCHOOL  
 LEVEL : PRIMARY 4  
 SUBJECT : MATHEMATICS  
 TERM : 2023 WA1

### SECTION A

Q1	2	Q2	3	Q3	3	Q4	3	Q5	2
Q6	4	Q7	1	Q8	4				

### SECTION B

Q9	a) 32080      b) 46238
Q10	a) 48          b) 3
Q11	a) 250         b) 349
Q12	$275 \times 8 = 2200 \text{ ml}$ $2200 + 320 = \mathbf{2520 \text{ ml}}$
Q13	a) True          b) True          c) False

### SECTION C

Q14a	$12 + 9 = \mathbf{21}$
Q14b	$3795 - 21 - 9 = 3765$ $3765 \div 3 = \mathbf{1255}$
Q15	$6u = 60 + 60 + 24 = 144$ $1u = 144 \div 6 = 24$ $24 + 60 = \mathbf{84}$
Q16a	A
Q16b	$108 \div 36 = 3$ $3 \times 8 = \mathbf{24}$

