



HENRY PARK PRIMARY SCHOOL

END OF YEAR ASSESSMENT 2023

PRIMARY 3

SCIENCE

SECTION A (40 MARKS)

INSTRUCTIONS TO CANDIDATES

1. Do not turn over this page until you are told to do so.
2. Follow all instructions carefully.
3. Answer all questions.
4. Shade your answers on the Optical Answer Sheet (OAS) provided.

Name: _____ ()

Class: Primary 3 ()

Date: 26 October 2023

Total Time for Booklets A and B: 1 h 30 min

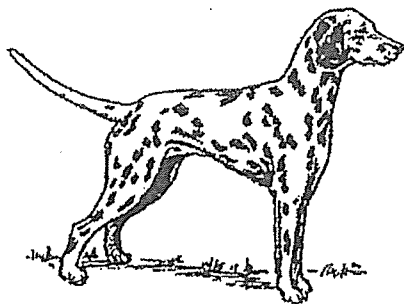
Sections	Marks
A	/ 40
B	/ 16
C	/ 24
Total (A+B+C)	/ 80

Parent's Signature: _____

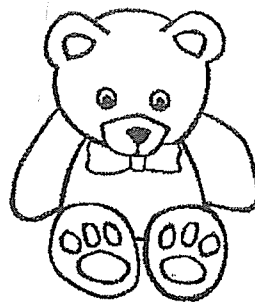
Section A: Multiple-Choice Questions (40 marks)

For each question from 1 to 20, four options are given. One of them is the correct answer. Make your choice (1, 2, 3 or 4). Shade the correct oval (1, 2, 3 or 4) on the Optical Answer Sheet.

1. Look at the pictures given.



Dog



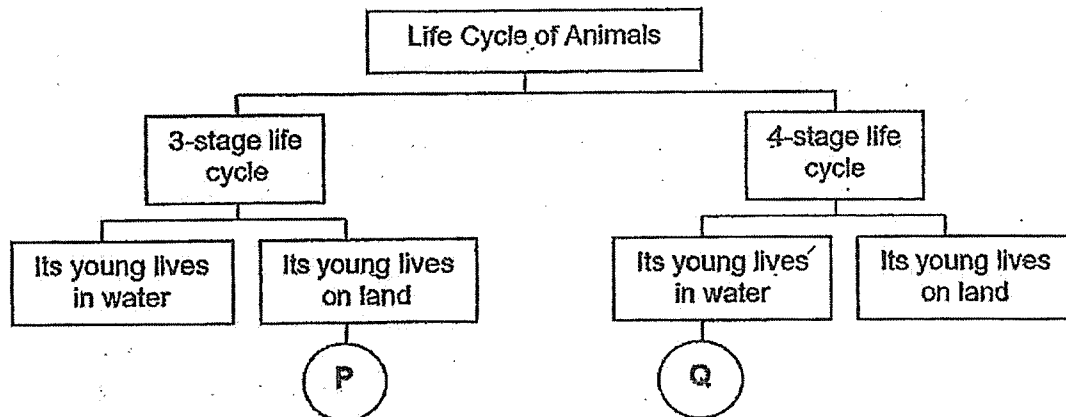
Teddy bear

Which one of the following statements is correct?

- (1) A teddy bear is a non-living thing as it cannot grow.
- (2) Both are non-living things as they cannot reproduce.
- (3) A teddy bear is a living thing as it needs air to survive.
- (4) Both are living things as they can respond to changes.

()

2. Study the classification chart below.



What can animals P and Q be?

	P	Q
(1)	cockroach	butterfly
(2)	cockroach	mosquito
(3)	frog	mosquito
(4)	grasshopper	butterfly

()

3. The table shows Mary's answers to three questions about bacteria.

Question		Answer
A	Is bacteria a living thing?	Yes
B	Is bacteria a type of fungi?	Yes
C	Are some bacteria useful to humans?	Yes

Which of the questions were answered correctly?

- (1) A and B only
- (2) A and C only
- (3) B and C only
- (4) A, B and C

()

4. The table shows Amir's observation of animals A, B, C and D. A tick (✓) indicates that the characteristic was observed.

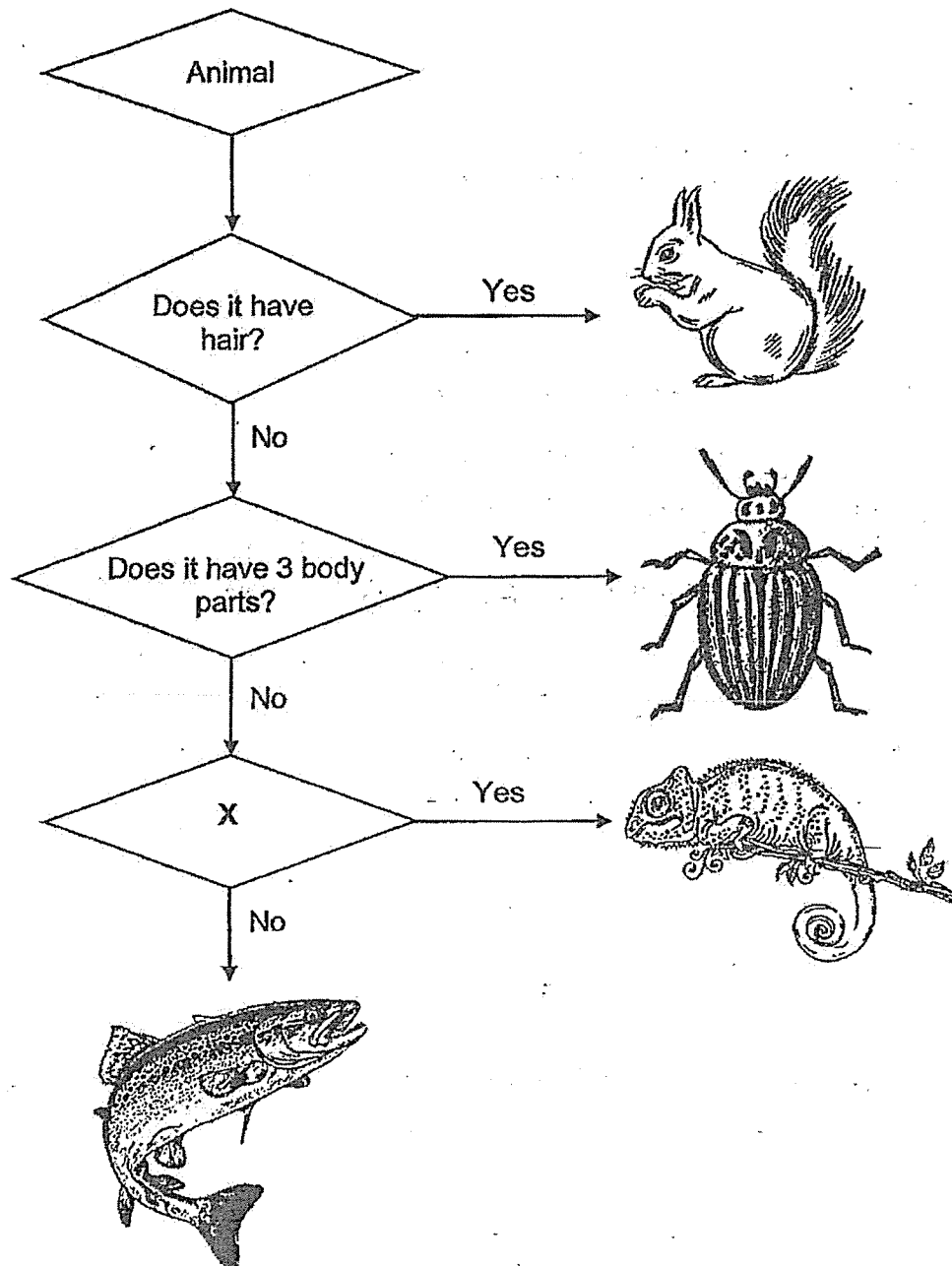
Characteristic	Animal Group			
	A	B	C	D
Has scales as outer covering.	✓		✓	
Breathes through gills.			✓	
Has feathers as outer covering.				✓

Based on the table above, which of the following is classified correctly?

	Animal Group	Animals
(1)	A	Insects
(2)	B	Reptiles
(3)	C	Fish
(4)	D	Amphibians

()

5. Study the classification chart below.

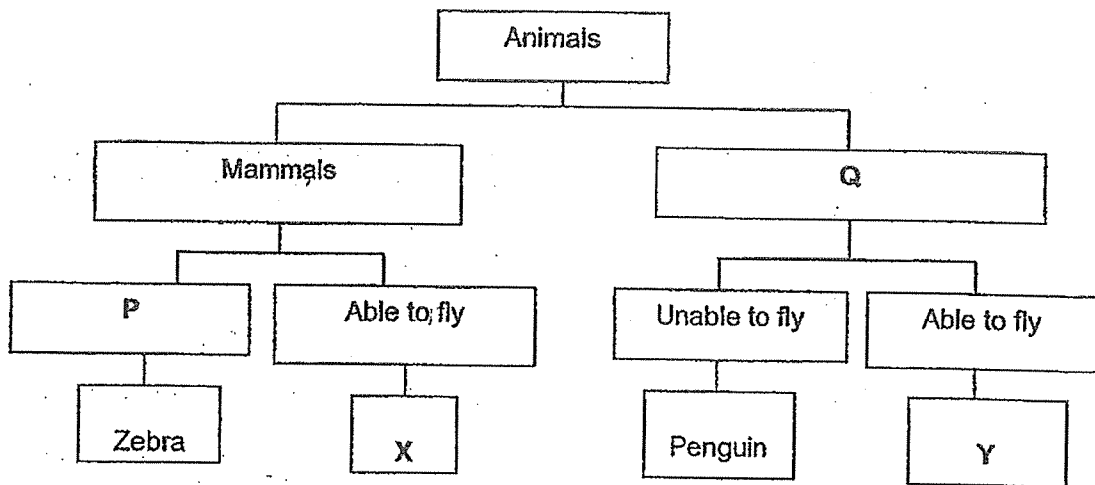


Which of the following is a possible question for X in the chart shown above?

- (1) Does it lay eggs?
- (2) Does it live on land?
- (3) Does it have scales?
- (4) Does it live in water?

()

6. The table below shows how some animals are classified.



Based on the classification table above which of the following is correct?

	Heading for P	Heading for Q	Animal X	Animal Y
(1)	Unable to fly	Insects	Bat	Eagle
(2)	Has hair	Insects	Eagle	Bat
(3)	Unable to fly	Birds	Bat	Eagle
(4)	Has hair	Birds	Eagle	Bat

()

7. Alya, Bala, Chun Ming and Dawn made the following statements about the two plants shown below.



Plant A



Plant B

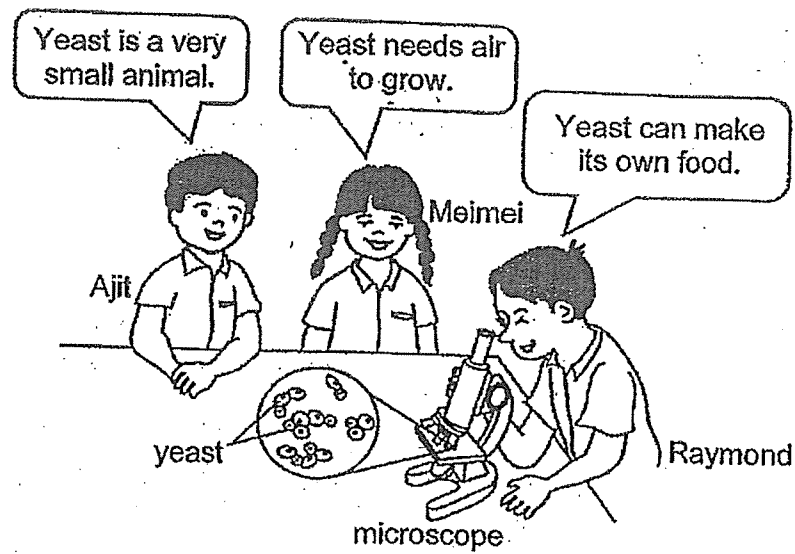
Student	Statement
Alya	Plant A is a flowering plant.
Bala	Both plants reproduce by spores.
Chun Ming	Plant A bears fruit while plant B bears flowers.
Dawn	Plant B cannot make food as it is a non-flowering plant.

Who made the correct statements?

- (1) Alya only
- (2) Alya and Chun Ming only
- (3) Chun Ming and Dawn only
- (4) Bala and Dawn only

()

8. Each of the following students said one thing about yeast.

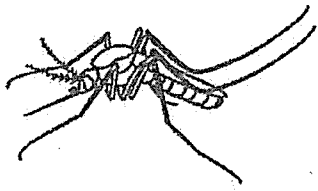


Which students are **not** correct?

- (1) Ajit and Meimei
- (2) Meimei and Raymond
- (3) Raymond and Ajit
- (4) Ajit, Meimei and Raymond

()

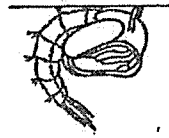
9. A, B, C and D are the different stages in the life cycle of a mosquito.



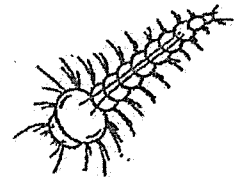
A



B

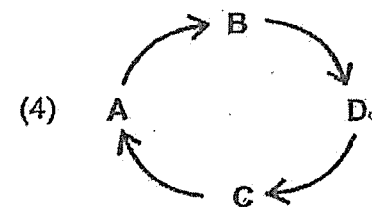
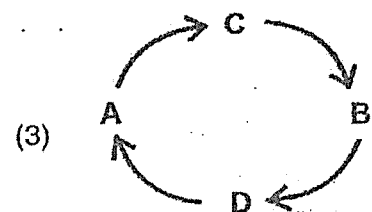
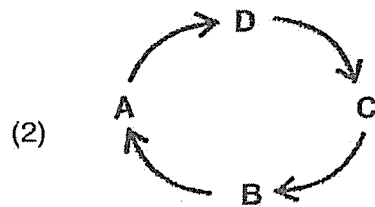
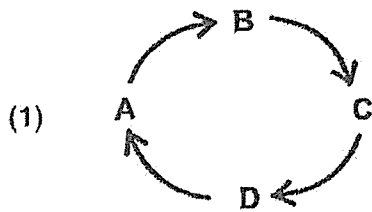


C



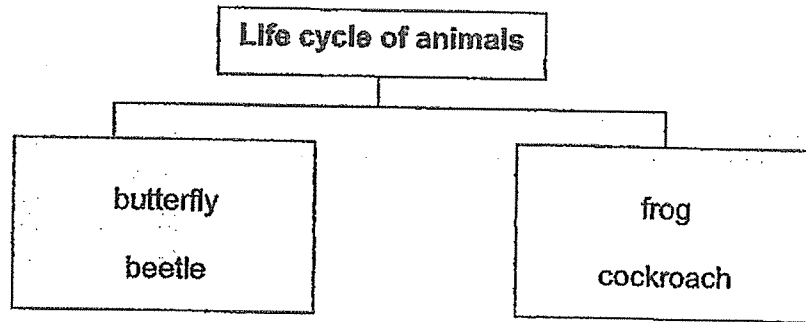
D

Which of the following correctly shows the life cycle of a mosquito?



()

10. Study the classification chart below.

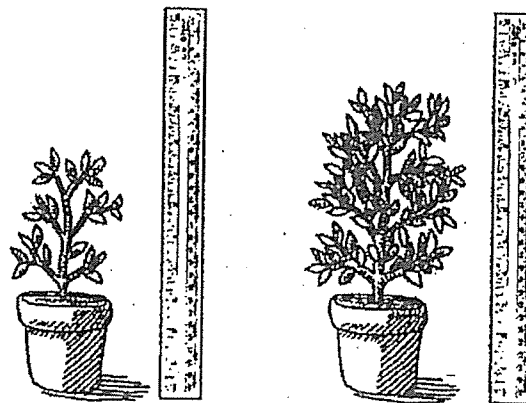


How are the above animals classified?

- (1) how they reproduce
- (2) number of legs they have
- (3) number of stages in their life cycle
- (4) whether the young looks like the adult

()

11. Zaleha found a plant in the garden and measured its height using a ruler. After two weeks, she measured its height again as shown below.



At the start

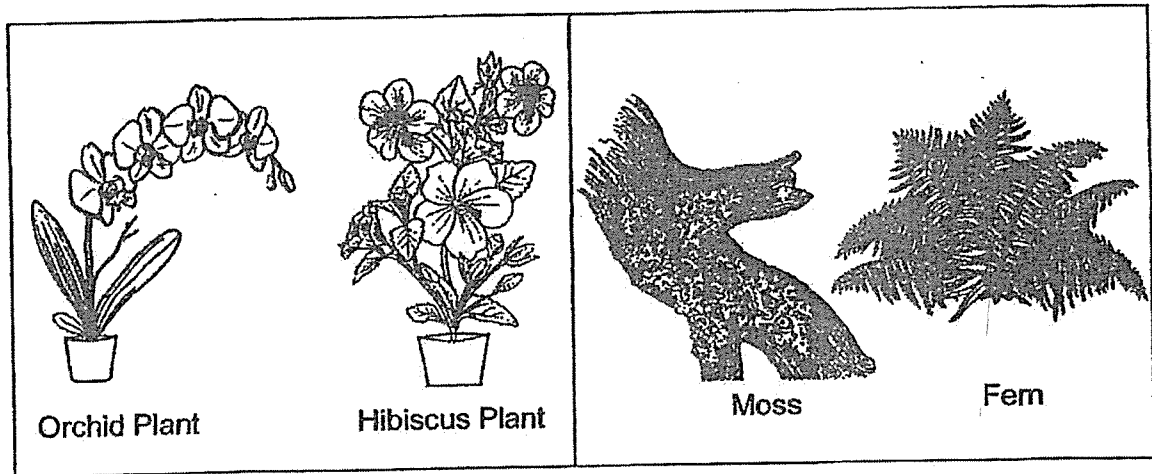
After two weeks

From her observation, Zaleha concluded that the plant is a living thing because it can _____.

- (1) grow
- (2) breathe
- (3) respond
- (4) reproduce

()

12. Study the plants given in groups X and Y.



Group X

Group Y

Which of the following best represents groups X and Y?

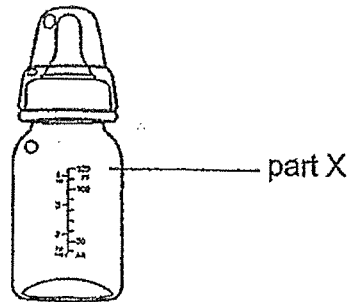
	Group X	Group Y
(1)	Many flowers	One flower
(2)	Land plant	Water plant
(3)	Reproduce by spores	Reproduce by seeds
(4)	Flowering plants	Non-flowering plants

()

13. Mrs Kumar needed to buy a milk bottle for her one-year-old daughter.

Part X of the milk bottle is made up of a material with the following characteristics:

- It is light.
- It allows most light to pass through.
- It cracks when dropped on the floor.



Which material is the most suitable to make part X of the milk bottle?

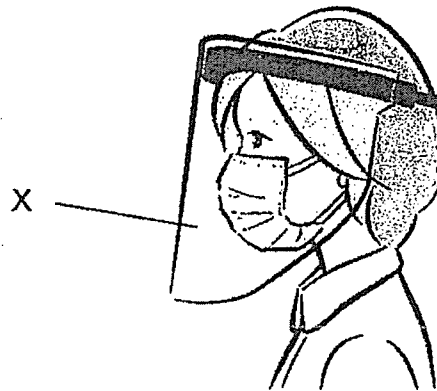
- (1) metal
- (2) wood
- (3) plastic
- (4) ceramic

()

14. Leanne listed the properties of 4 materials, A, B, C and D, in the table below.

Properties	Material			
	A	B	C	D
Does it break easily?	No	No	Yes	No
Is it waterproof?	Yes	Yes	Yes	Yes
Does it allow most light to pass through it?	No	No	Yes	Yes
Is it flexible?	No	Yes	No	Yes

The diagram below shows a woman wearing a face shield.

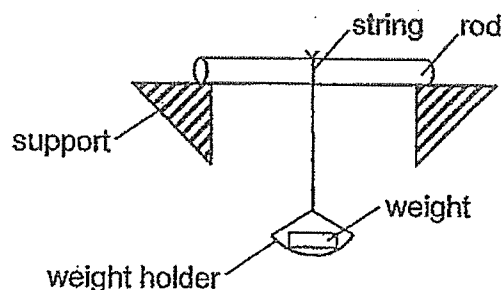


Which one of the materials, A, B, C and D, is most suitable to make part X of face shield shown above?

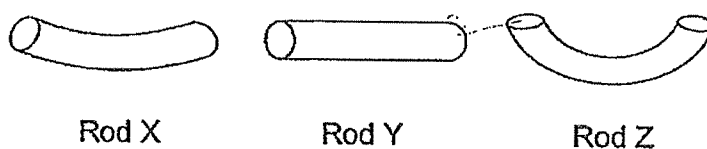
- (1) Material A
- (2) Material B
- (3) Material C
- (4) Material D

()

15. Three similar rods, X, Y and Z, made of different materials, were tested as shown below.



The diagrams below shows how the three rods look like after the test.

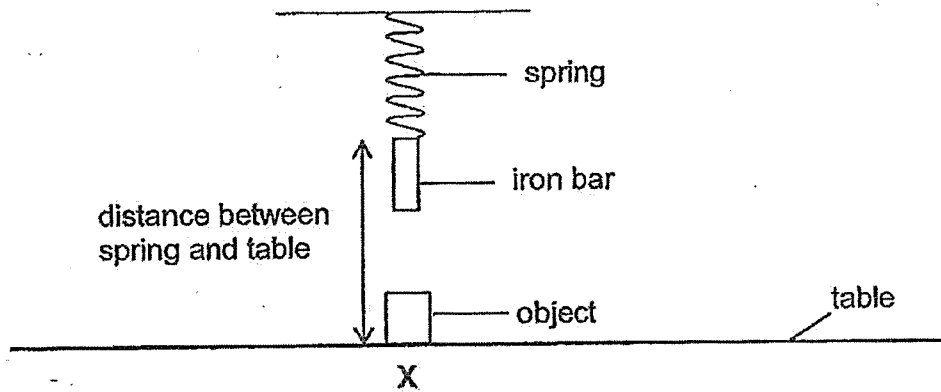


Which of the following statements is correct?

- (1) Rod Z is rigid.
- (2) Rod X is the strongest.
- (3) Rod X is less flexible than Rod Z.
- (4) Rod Y is more flexible than Rod Z.

()

16. Mary conducted an experiment using the following set-up. The iron bar was hung from the spring. After the spring had stopped moving, Mary measured the distance between the spring and the table.



She repeated the experiment by placing different objects A, B and C at point X. Her results are shown in the table below.

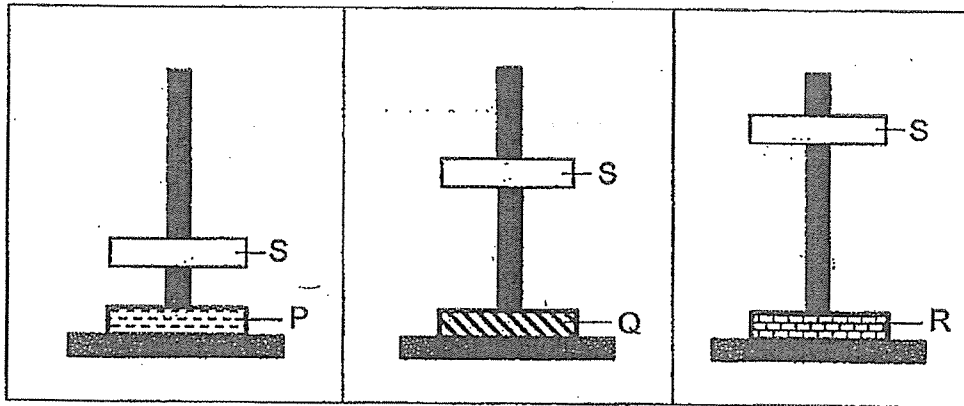
Object placed at X	Distance between spring and table (cm)
No object	10
A	15
B	10
C	5

Based on the results above, which one of the following is likely to be correct?

- (1) Object A is a magnet.
- (2) Object B is made of steel.
- (3) Object C is made of glass.
- (4) Objects A and B are magnets.

()

17. The diagrams show three set-ups with magnets P, Q, R and S. The magnets have the same mass.

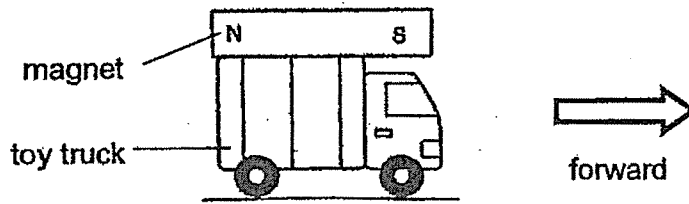


Which one of the following statement(s) is/are correct?

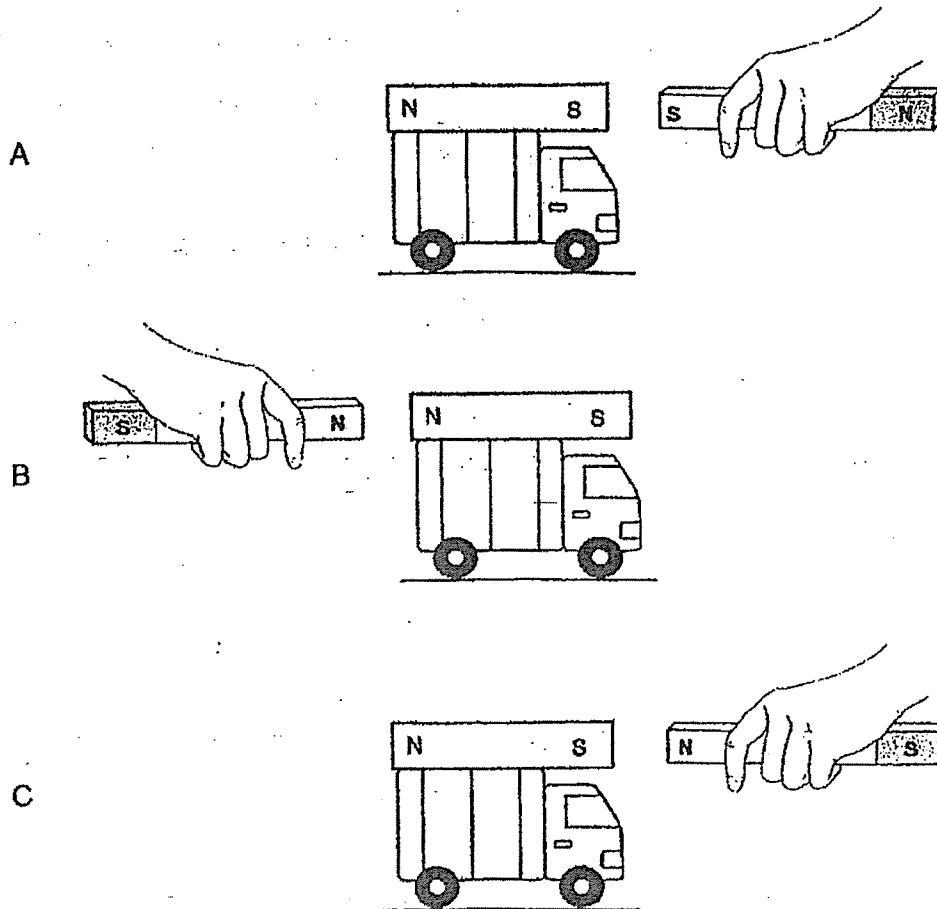
- A Magnet P is stronger than Q and R.
 - B Magnet R is stronger than P and Q.
 - C Magnet Q is weaker than P but stronger than R.
- (1) A only
 (2) B only
 (3) B and C only
 (4) A, B and C

()

18. The diagram shows a bar magnet attached to a toy truck placed on the floor.



Ahmad wanted to use another bar magnet to move the toy truck forward.



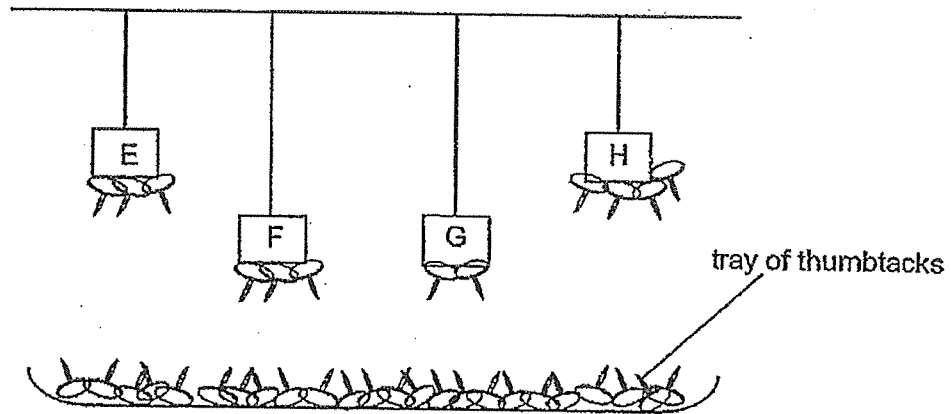
Which of the following arrangements will move the toy truck forward?

- (1) A and B only
- (2) B and C only
- (3) A and C only
- (4) A, B and C

()

19. Four magnets, E, F, G and H, were hung from strings of two different lengths as shown in the diagram below.

A tray of thumbtacks was placed below the magnets and the different numbers of thumbtacks were attracted to the magnets.



Which of the following shows the likely order of magnets from the strongest to the weakest?

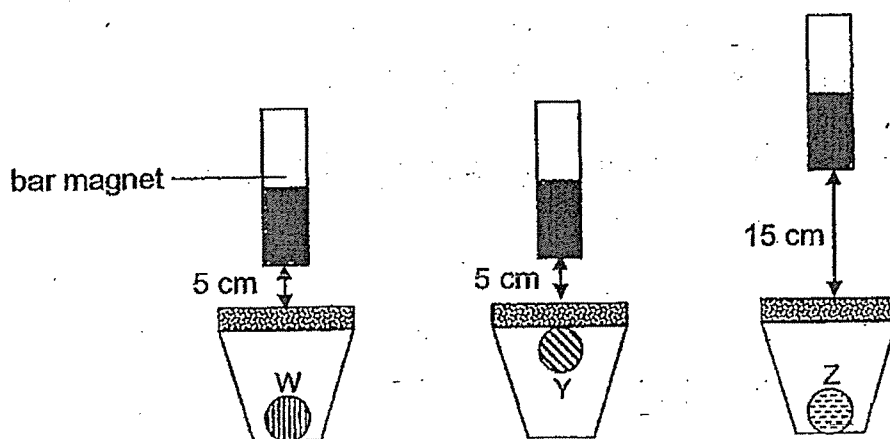
	strongest			weakest
— (1)	F	H	G	E
(2)	F	G	E	H
(3)	H	F	G	E
(4)	H	E	F	G

()

20. Kumar wanted to find out which materials, W, Y and Z, are magnetic. He prepared three similar set-ups as shown below.



He held the same bar magnet above each set-up as shown below and made the following observations.



Based on his observations, which of the following best describes the magnetic property of materials W, Y and Z?

Is the material magnetic or non-magnetic?		
Magnetic	Non-magnetic	Not possible to tell
(1) Y	W	Z
(2) Y	Z	W
(3) W	Y	Z
(4) Z	Y	W

~ End of Booklet A ~



HENRY PARK PRIMARY SCHOOL

PRIMARY 3

SCIENCE

BOOKLET B and C (40 MARKS)

INSTRUCTIONS TO CANDIDATES

1. Do not turn over this page until you are told to do so.
2. Follow all instructions carefully.
3. Answer all questions.

Name: _____ ()

Class: Primary 3 ()

Date: _____

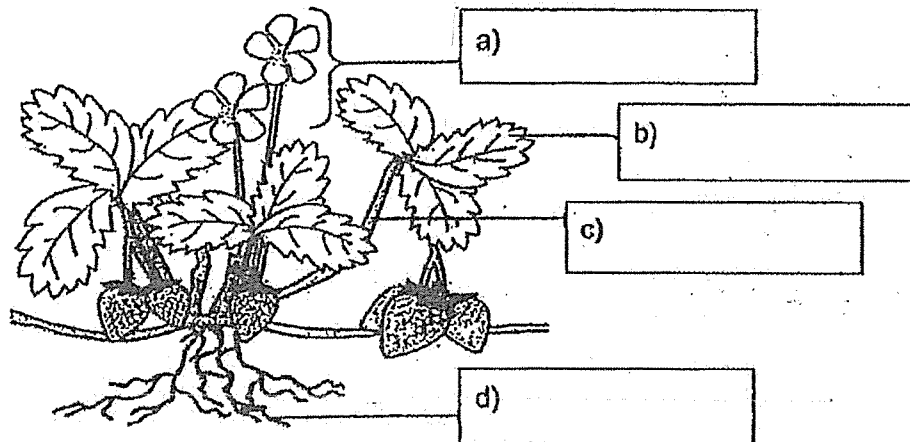
Total Time for Booklets A, B & C : 1 h 30 min

Marks for Booklet B and C: _____

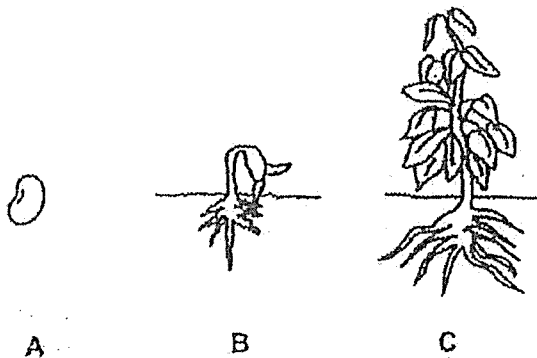
Section B : (8 x 2 marks = 16 marks)

Write your answers to questions 21 to 28 in the spaces given. Each question is 2 marks.

21. Identify and label correctly the parts of the plant shown in the diagram below. [2]



22. The diagram below shows the 3 stages in the life cycle of a bean plant.



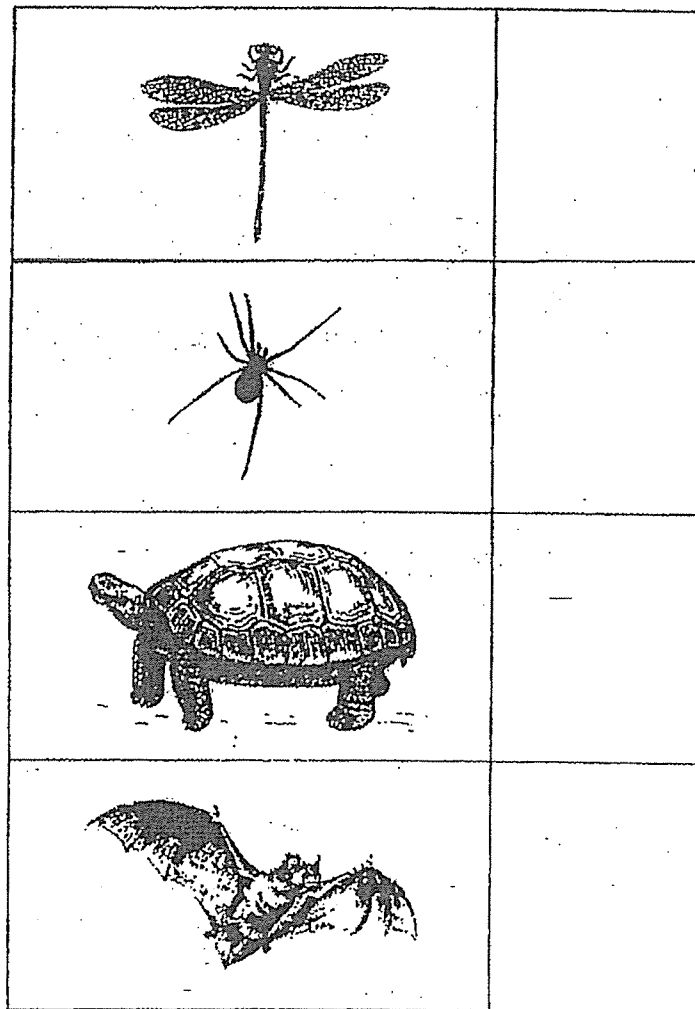
Name the stages A and B in the life cycle of the bean plant. [2]

A : _____ B : _____

23. A description of animal A is given below.

"I am a small animal. My body, which has a hard outer covering, is divided into three parts. I reproduce by laying eggs. What am I?"

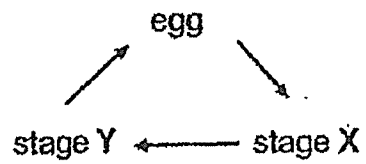
a) Study the diagrams given below and put a tick (✓) in the box that represents animal A. [1]



b) Put a tick (✓) beside the animal group that animal A belongs to. [1]

Animal group	Put a tick (✓) in the correct box
fish	
bird	
insect	
mammal	

24. The diagram below shows the life cycle of a frog.



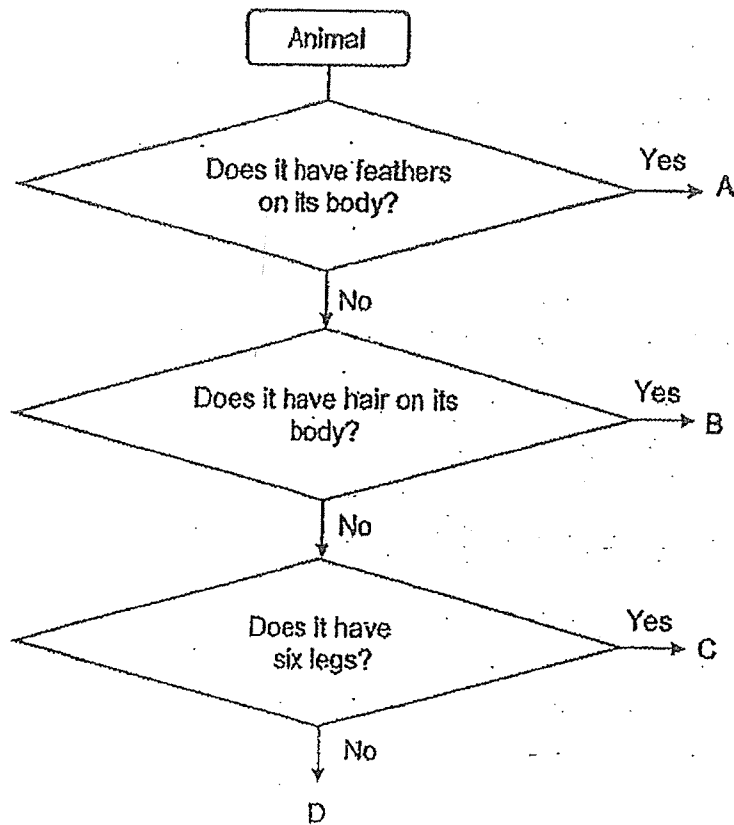
Name stages X and Y.

[2]

Stage X : _____

Stage Y : _____

25. Study the flowchart below carefully.

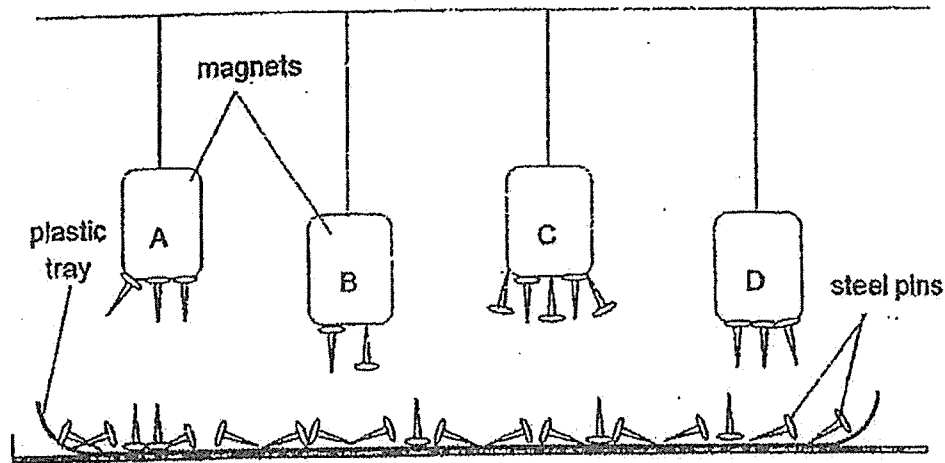


Using the information in the flowchart, group the animals by writing the A, B, C or D in the correct boxes below.

[2]

Animal	Letters
Cockroach	
Chicken	
Giraffe	
Frog	

26. Magnets A, B, C and D are hanging from strings of two different lengths as shown in the diagram below. A plastic tray of steel pins is placed below the magnets. Each magnet attracts different number of steel pins.



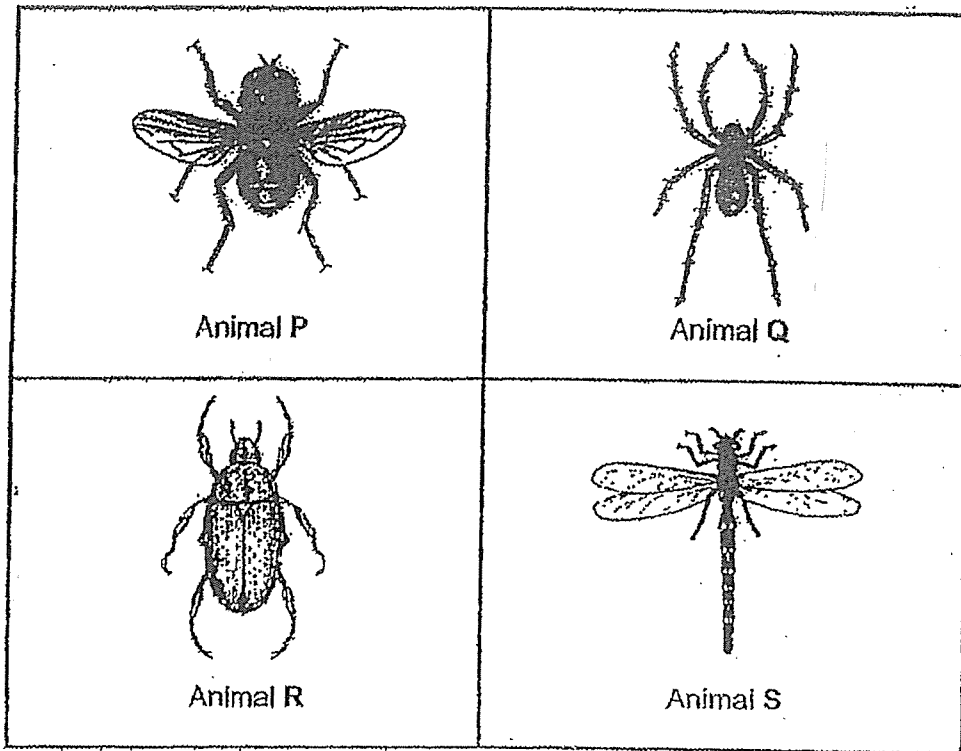
Based on the diagram above, arrange the magnets according to their magnetic force, from the magnet with the strongest magnetic force to the magnet with the weakest magnetic force.

Write A, B, C and D in the correct boxes provided below.

[2]

Strongest Magnetic Force		Weakest Magnetic Force
<div style="border: 1px solid black; width: 80px; height: 80px; margin: 0 auto;"></div>	<div style="border: 1px solid black; width: 80px; height: 80px; margin: 0 auto;"></div>	<div style="border: 1px solid black; width: 80px; height: 80px; margin: 0 auto;"></div>

27. Jane and Mary found four small animals (P, Q, R and S) as shown in diagram below.



The girls observed these animals and made a table about their observations.

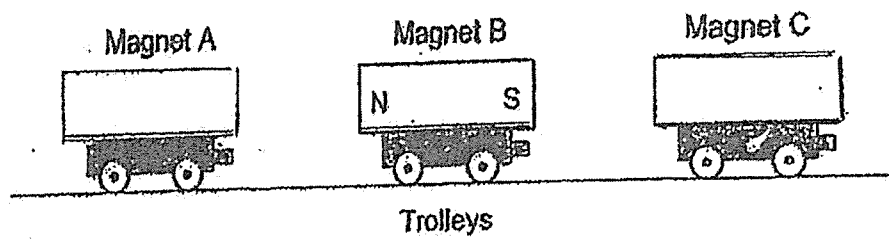
Complete the table below by adding the letters (P, Q, R and S) of the four animals in the correct boxes. [2]:

Animal (Write P, Q, R or S)			Number of wings	Number of legs	Number of feelers
(a)			0	6	2
(b)			4	6	2
(c)			0	8	0
(d)			2	6	2

28. The diagram below shows three trolleys.

Paul put a bar magnet on each trolley. He pushed the trolleys together.

- Magnet B attracted magnet A.
- Magnet B repelled magnet C.



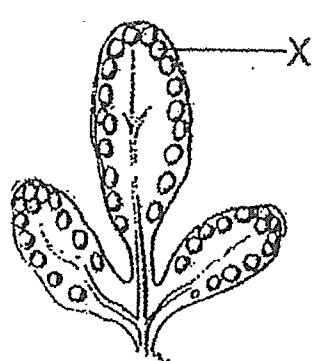
On the diagrams above, write the North and South poles of magnets A and C [2]
using the letters N and S.

End of Section B

Section C: (24 marks)

Write your answers to questions 29 to 35 in the spaces given. Each question carries 2 to 4 marks.

29. Tiffany found plant P in her garden. She observed the plant and recorded the following observations.

Observations of plant P	
<ul style="list-style-type: none"> It is green in colour. It has part X on the underside of its leaves which contains some brown powder. It does not bear flowers. 	

- a) Name part X. _____ [1]
- b) Can plant P produce fruit? Explain your answer. [2]

30. Alex observed animals, D and E, over a period of time.

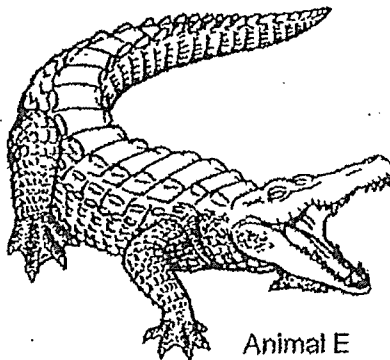


A young of animal D

Animal D has moist skin as outer covering. The adult lives on land and lays eggs on the surface of a pond.

A few weeks later, some of the eggs hatched and its young lived in the pond until they grow into adults.

a) Name the animal group that animal D belongs to.



Animal E

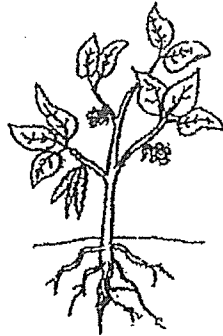
Animal E has scales and dry skin and lives on land. It lays eggs and its young were found near the water after they hatched from the eggs.

Alex concluded that animals D and E have many similar characteristics so they belong to the same animal group.

b) Do you agree with Alex's conclusion? Explain why.

[2]

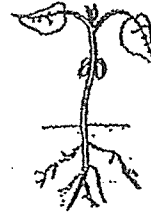
31. The diagrams below show the stages in the life cycle of a plant. They are not arranged in order.



P



Q



R

- Use the diagrams shown above to answer the following questions.

Observe the parts of the plant at stages P and R.

- a) Based on your observation, state one **similarity** between the plant at stages P and R. [1]

- b) Based on your observation, state one **difference** between the plant at stages P and R. [1]

32. The table below shows the properties of three materials E, F and G.

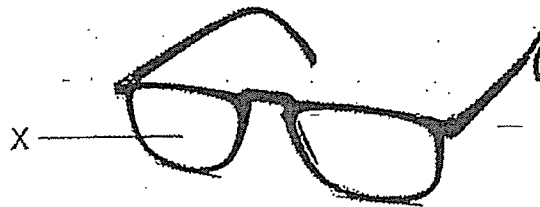
Material	Property			
	Waterproof	Flexible	Strong	Allow light to pass through
E	✓	✓		
F	✓		✓	✓
G		✓	✓	

a) Based on the information given in the table above, state two properties of material G. [2]

Property 1 : _____

Property 2 : _____

b) The diagram below shows a pair of reading glasses.



Which material, E, F or G, is most suitable for making part X?

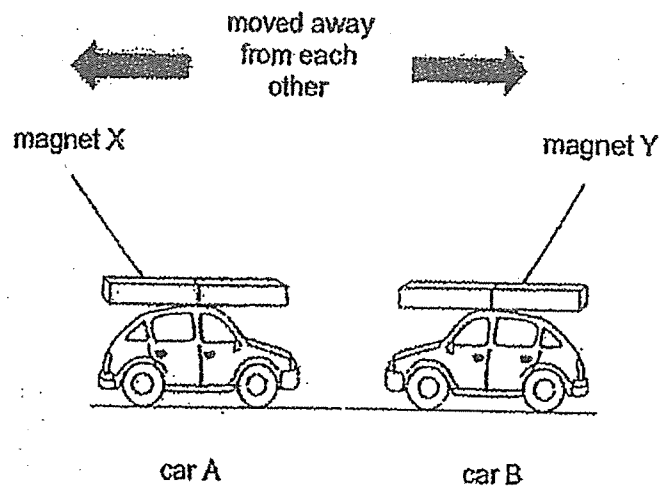
Explain your answer.

[2]

Material: _____

Explain: _____

33. Jett tied two similar magnets X and Y on two plastic toy cars, A and B.



- a) When the two plastic toy cars with the magnets were brought close to each other, they moved away from each other as shown in the diagram above.

Explain why this happened.

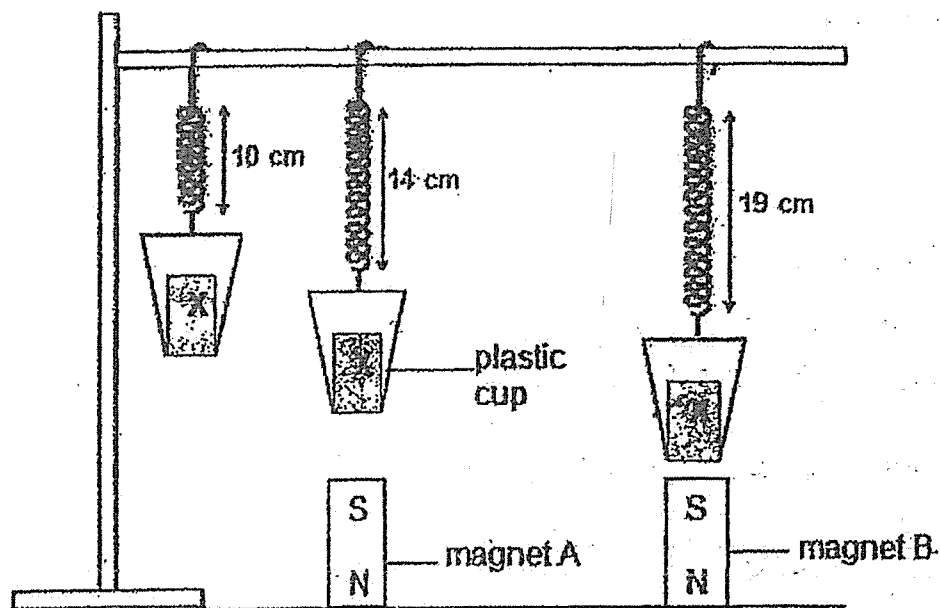
[2]

- b) What can Jett do to magnet X to make the two toy cars move towards each other?

[2]

Explain your answer.

34. The diagram below shows three identical plastic cups with object X in each one of them. The cups are attached to three identical springs. Object X is made of iron.



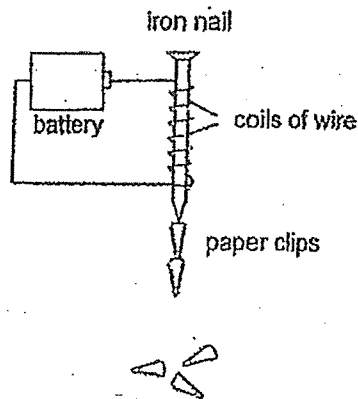
When magnets A and B were placed below the plastic cups, it was observed that the springs stretched longer.

- a) Explain why the springs stretched longer. [2]

- b) i) Which magnet, A or B, is stronger? [1]

- ii) Based on the diagrams shown above, explain your answer in (bi). [1]

35. Mary prepared an experiment as shown in the diagram below.



- a) Explain why the iron nail was able to attract the paper clips. [1]

- b) Suggest two ways Mary can increase number of paper clips attracted by the Iron nail above. [2]

i) _____

ii) _____

An iron nail was used in the above experiment.

- c) Besides iron, name another suitable material the nail can be made of. [1]

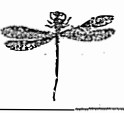
End of Section C

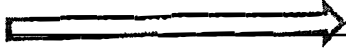
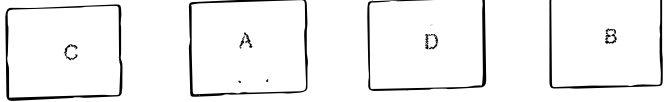
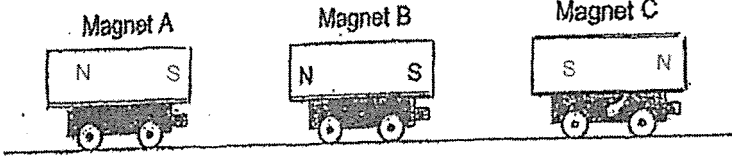
SCHOOL : HENRY PARK PRIMARY SCHOOL
 LEVEL : PRIMARY 3
 SUBJECT : SCIENCE
 TERM : 2023 SA2

SECTION A

Q 1	Q2	Q3	Q4	Q5	Q6	Q7	Q8	Q9	Q10
1	2	2	3	2	3	1	3	4	3
Q 11	Q12	Q13	Q14	Q15	Q16	Q17	Q18	Q19	Q20
1	4	3	4	3	1	2	2	4	1

SECTION B

Q21)	(a) flower (b) leaf (c) stem (d) roots										
Q22)	A : seed B: Young Plant										
Q23)	<div style="display: flex; align-items: center;"> <div style="margin-right: 10px;">(a)</div> <div style="border: 1px solid black; padding: 5px; text-align: center;">  <div style="margin-top: 5px;">✓</div> </div> </div> <div style="margin-top: 10px;"> <table border="1" style="width: 100%; border-collapse: collapse;"> <thead> <tr> <th style="width: 50%;">Animal group</th><th style="width: 50%;">Put a tick (✓) in the correct box</th></tr> </thead> <tbody> <tr> <td>fish</td><td></td></tr> <tr> <td>bird</td><td></td></tr> <tr> <td>insect</td><td style="text-align: center;">✓</td></tr> <tr> <td>mammal</td><td></td></tr> </tbody> </table> </div>	Animal group	Put a tick (✓) in the correct box	fish		bird		insect	✓	mammal	
Animal group	Put a tick (✓) in the correct box										
fish											
bird											
insect	✓										
mammal											
Q24)	Stage X : Young Stage Y : Adult										
Q25)	<table border="1" style="width: 100%; border-collapse: collapse;"> <thead> <tr> <th style="width: 50%;">Animal</th><th style="width: 50%;">Letters</th></tr> </thead> <tbody> <tr> <td>Cockroach</td><td style="text-align: center;">C</td></tr> <tr> <td>Chicken</td><td style="text-align: center;">A</td></tr> <tr> <td>Giraffe</td><td style="text-align: center;">B</td></tr> <tr> <td>Frog</td><td style="text-align: center;">D</td></tr> </tbody> </table>	Animal	Letters	Cockroach	C	Chicken	A	Giraffe	B	Frog	D
Animal	Letters										
Cockroach	C										
Chicken	A										
Giraffe	B										
Frog	D										

Q26)	<p>Strongest Magnetic Force  Weakest Magnetic Force</p> <p></p>
Q27)	<p>(a) R (b) S (c) Q (d) P</p>
Q28)	<p></p> <p>Trolleys</p>
Q29)	<p>(a) sports (b) Plant P cannot produce fruit as it is a non-flower plant.</p>
Q30)	<p>(a) amphibians (b) I do not agree with Alex's conclusion as Animal D can live in land and water while animal E can only live on land.</p>
Q31)	<p>(a) The plant in both stages of the life cycle have leaves. (b) The plant in stage P has flowers and fruits while the plant in stage R does not.</p>
Q32)	<p>(a) Property 1 : It is flexible Property 2 : It is strong (b) Material : F</p> <p>Explain : Material F allows light to pass through as it allows the user to see clearly through the lens.</p>
Q33)	<p>(a) The two like poles of magnet X and Y are facing each other that is why they repelled each other. (b) Turn magnet X around so that the unlike poles will face each other and they would attract. The cars will then move towards each other.</p>
Q34)	<p>(a) Object X is a magnetic material so the magnet would attract object X and the spring will stretch longer. (b) (i) Magnet B (ii) The spring stretched longer</p>
Q35)	<p>(a) The iron nail became an electromagnet. (b) (i) She can increase the number of coils. (ii) She can increase the number of batteries. (c) Steel</p>