

# SS100S SERIES

## HIGH PRECISION SCREW DISPENSING VALVE SYSTEM

The **SSV100S precision screw dispensing valve** combines a brushless servo motor with precision metal gear reduction to deliver **high-torque performance**.

Its tungsten carbide screw assembly ensures **exceptional dispensing accuracy** while allowing tool-free maintenance, complete disassembly and reassembly can be performed in seconds. This patented robust design is suitable for high reliability demanding industrial applications.



### Contact Us:

Vyns Global Sdn. Bhd.,  
Head office: 47, Jalan Cassia Selatan 3/3,  
Taman Perindustrian Batu Kawan  
14110 Bandar Cassia,  
Pulau Pinang, Malaysia.

Email: [sales@vyns.com.my](mailto:sales@vyns.com.my)  
Tel: +6 (04) 306 7751  
[www.vyns.com.my](http://www.vyns.com.my)



### Authorized Distributor:





FEATURES

- ✓ **Precision Control:** 0.2mm minimum dot diameter.
- ✓ **High Speed:** 400 RPM maximum operation.
- ✓ **Quick Maintenance:** Modular screw assembly changes in seconds.
- ✓ **Material Versatility:** Handles fluids up to 200,000 cps.
- ✓ **Consistent Performance:** ±2% dispensing accuracy with optional heating.
- ✓ **Durable Construction:** Tungsten carbide screw components.
- ✓ **Easy Maintenance:** Integrated with tool-free design for easy assembly and disassembly.
- ✓ **Efficient Design:** Low consumable usage reduces operating costs.
- ✓ **Seamless SNIPE Series Compatibility**
  - ❑ Unified **Geometry Sketch™** software interface
  - ❑ All process recipes are **directly transferable to S300BT and S400 systems**

ADVANCED FEATURES

- ★ **Cross-Platform Recipe Compatibility**
  - ✓ Reduces process validation time with seamless recipe transfer between S300BT (benchtop) and S400 systems
- ★ **Exceptional stability and Ultra-fast response** (Max: 400 Rotation/ Mins)
- ★ **Touchscreen interface** for easy operation

APPLICATIONS

- ✓ SMT assembly manufacturing
- ✓ Optoelectronics component manufacturing
- ✓ Consumer product manufacturing
- ✓ Connector industry applications

MATERIALS

- ✓ Solder pastes
- ✓ Silver conductive adhesives
- ✓ UV-curable resins
- ✓ Silicone encapsulants
- ✓ Flux compounds
- ✓ High-viscosity epoxies

SPECIFICATIONS

SSV100S Screw Valve

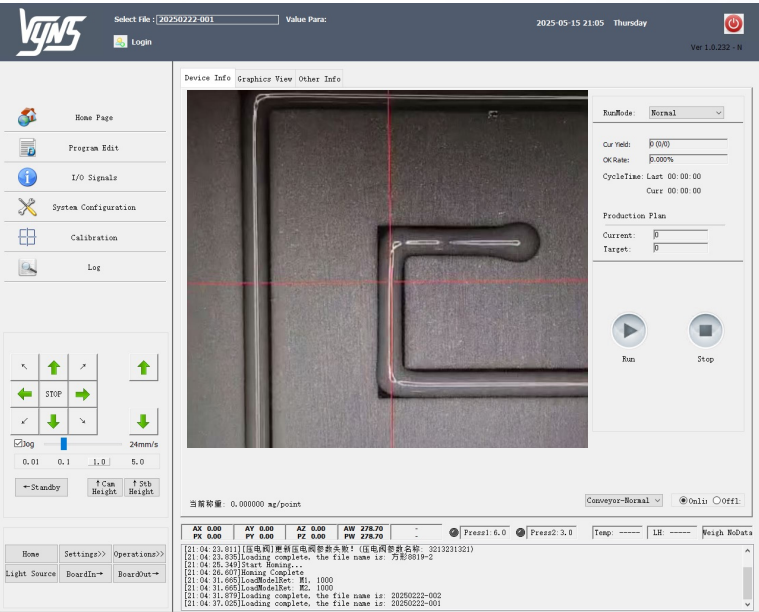
Parameter	Specification
Dispensing Method	Contact Dispensing
Nozzle Compatibility	Plastic / TT Angled / Precision
Compatible Fluids	Solder Paste, Conductive Adhesives, UV Glue, Silicon Based, High Viscosity Epoxies
Fluid Viscosity Range	0 – 200,000 cps
Operating Frequency	Max: 400 Rotation / Min
Minimum Dot Size	0.2mm Diameter
Minimum Line Width	0.25mm
Valve Weight	500g
Dimensions	53mm (L) × 40mm (W) × 190mm (H)


SSC100 Controller

Parameter	Specification
Control Method	MCU-based Electronic
Dispensing Time Control	Controllable Digital
Power Supply	AC220V/50Hz, 120W
Weight	2kg
Dimensions	203mm (L) × 120mm (W) × 135mm (H)

Why Choose the SNIPE SS100S Series?

- ✓ **Zero Transition Risk** – 100% recipe compatibility with production S300BT and S400 systems
- ✓ **Lab-to-Factory Continuity** – Eliminate revalidation when scaling up
- ✓ **Cost-Effective Precision** – Less investment cost for high precision micro dispensing application
- ✓ **Intuitive Operation** – <1 hour training curve for new users



 **Works with  
Geometry Sketch™ Software**

S300BT



S400



Complete Solutions Available

**SS100S + S400** = High-volume production  
**SS100S + SB300BT** = Prototyping/testing