

# ***Bhavani*** ***Engineering*** ***Works***

**Experts In Metal Roofing, False Ceiling  
Systems & P.E.B Structure Fabrications**

---

**Honourable Founder :**  
**Shri. Sirigiri Suryanarayana**

**Proprietor:**  
**Sirigiri. Srinivas**



# Our Products & Services

01

## ROOFING SHEETS & ACCESSORIES

Metal Roofing Sheets  
UPVC & Skylight Roofing Sheets  
Turbo ventilators

02

## PRE-ENGINEERED FABRICATIONS

Canopy Structures  
Commercial & Residential Structures

03

## CANOPY WORKS

150F false Ceiling System  
Metal Roofing System  
Water gutter, Flashing, Fascia & lightings

04

## SALES & PROMOTIONS

Certified JSW Roofing  
Dealer  
Tata steel, Jindal India  
Supplier





For over two decades, Bhavani Engineering Works, formerly Bhavani Enterprises, has flourished under the enduring legacy of our esteemed founder, the late **Shri Sirigiri Suryanarayana**. His unwavering commitment to trust, reliability, and unparalleled quality formed the bedrock of our success in Petrol pump Canopy construction, In AP/TG 60% of Canopy Roofing & Ceilings are built by Our Company. Shri Sirigiri Suryanarayana was a leading Entrepreneur in Canopy Works; he was a dedicated craftsman, deeply invested in every project, ensuring meticulous attention to detail and unwavering adherence to deadlines. His profound dedication to fostering genuine relationships extended to clients, suppliers, and employees, creating a culture of mutual respect and collaborative excellence. His word was his bond, and his commitment to delivering on promises was absolute. He instilled in us a relentless pursuit of perfection, a passion for exceeding expectations, and a genuine care for the well-being of everyone involved. His unwavering dedication to project work commitments, coupled with his innate ability to build lasting relationships, has cemented Bhavani Engineering Works as a trusted and respected industry leader. We are committed to honoring his vision by upholding his values of integrity, dedication, and unwavering commitment to excellence in every project we undertake.





# About Us.

At Bhavani Engineering Works, we are your trusted partners for all your structural, roofing & ceiling needs.

we specialize in:

- Pre-Engineered Building (PEB) Fabrications
- Metal Roofing Systems
- Canopy Ceiling Solutions

We offer a variety of roofing materials, including metal, UPVC, bamboo, and tile profile sheets, sourced from top manufacturers like JSW (certified dealer), Tata, and Jindal India. We provide end-to-end solutions, from initial site measurements and material selection to professional installations. We also provide water leakage solutions and ongoing maintenance.. Whether you need a canopy structure, a commercial building, or a residential roofing, our experienced team is dedicated to delivering durable, cost-effective, and aesthetically pleasing results.

## Our Philosophy & Vision for the Future

"Our philosophy at Bhavani Engineering Works is to Keep our Priority first on customers. We believe in building strong relationships based on trust, transparency, and open communication. We are dedicated to providing exceptional service and exceeding our customers expectations on every project.

"To be the preferred provider of innovative and sustainable roofing canopy false ceiling and structural solutions in the region, recognized for our quality craftsmanship, customer focus, and commitment to environmental responsibility. We will achieve this through continuous improvement, technological advancement, and the empowerment of our dedicated team."

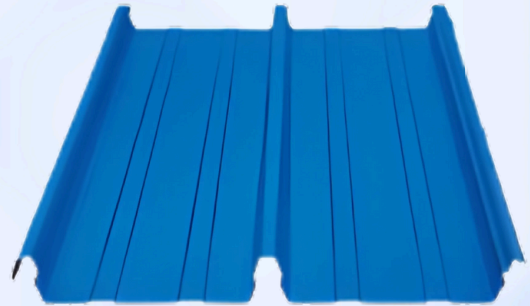




# ROOFING SHEETS & ACCESSORIES



**HI-RIB ROOFING**



**KLIPPON ROOFING**



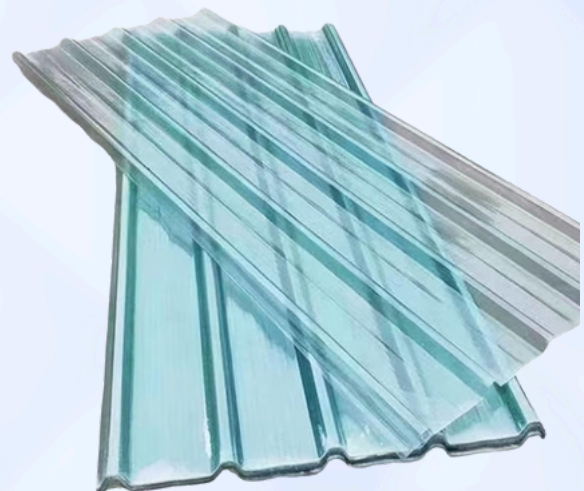
**UPVC ROOFING**



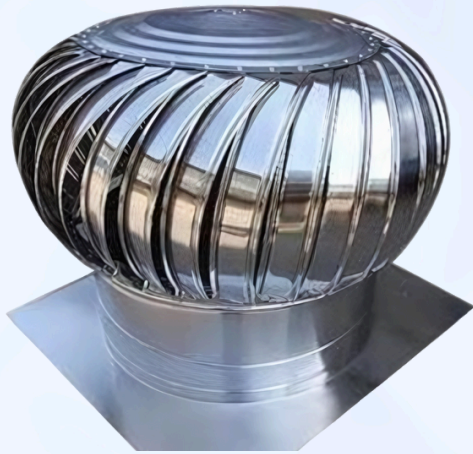
**TILE PROFILE**



**BAMBOO PROFILE**



**SKYLIGHT SHEET**



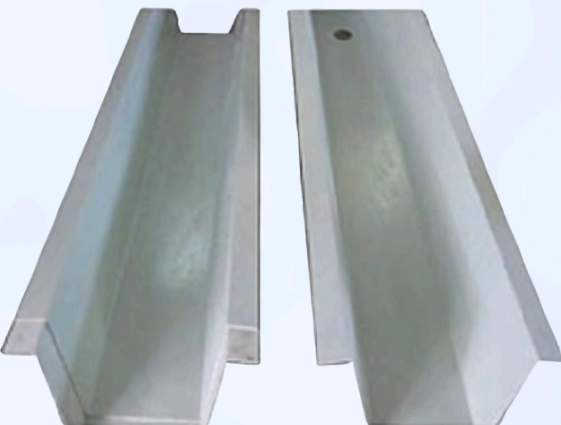
## **TURBO VENTILATORS**

Turbo ventilators are wind-powered devices that use wind energy to rotate a turbine, effectively drawing out stale air and heat. This process improves air circulation, reduces moisture, and maintains a comfortable indoor environment. They offer a cost-effective, energy-efficient solution for attics and large buildings, contributing to a healthier space.



## **FLASHING/ RIDGE SHEETS**

Wall corner flashing sheets serve as protective and decorative trims. Primarily, they safeguard vulnerable wall edges from damage and wear in high-traffic areas. Constructed from durable PVC or metal, they offer longevity and a clean, finished aesthetic. They are versatile solutions for both functional protection and enhancing visual appeal in diverse settings.

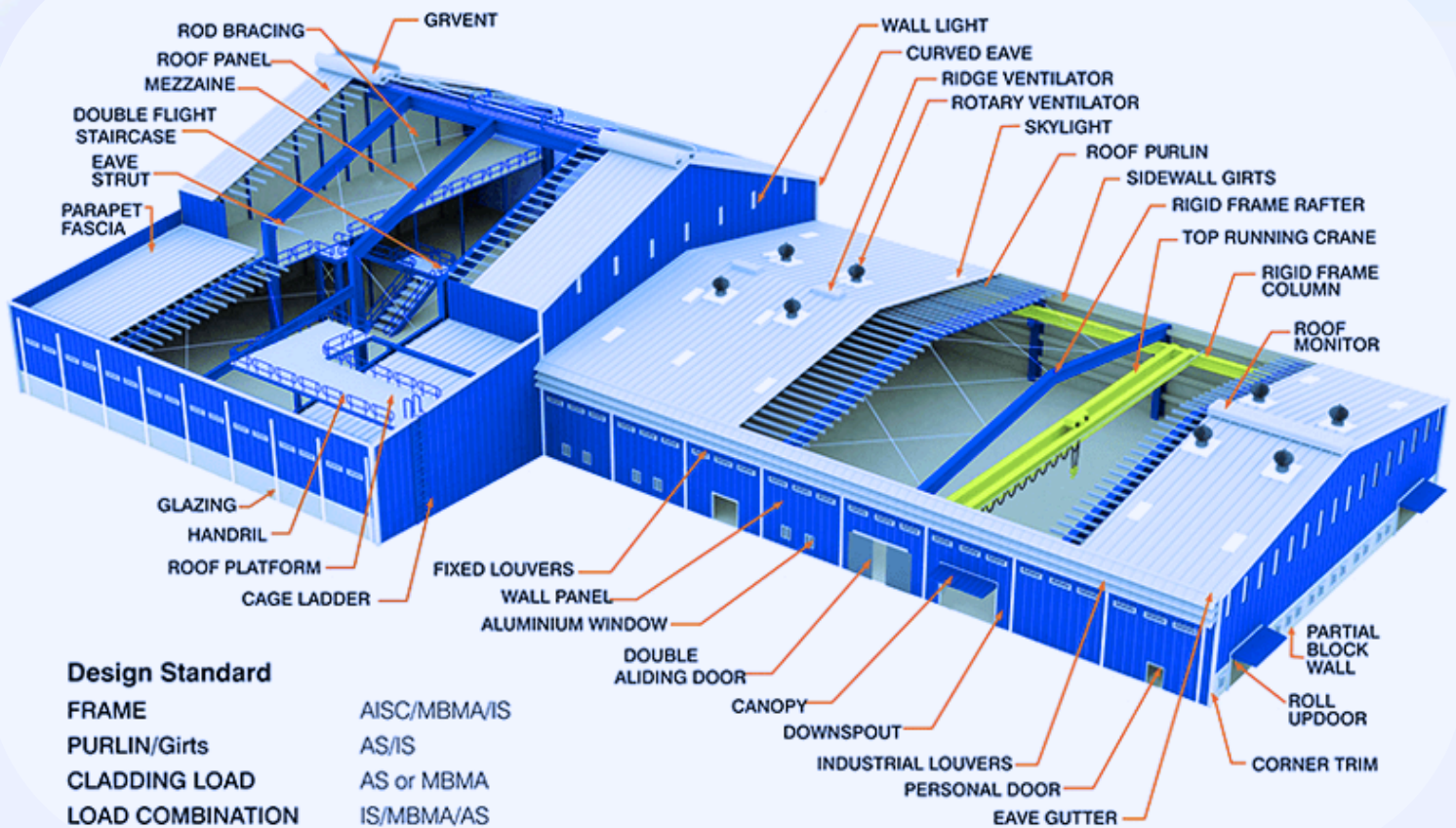


Water gutters in PEBs are crucial for effective rainwater management. Constructed from durable galvanized steel, they collect and divert roof runoff, preventing damage to the walls and foundation. Custom-designed to the PEB's specifications, these systems protect structural integrity and prolong the lifespan through efficient, properly sized drainage.

## **WATER GUTTERS**



# PRE-ENGINEERED FABRICATIONS



Pre-engineered fabricated structures (PEFS) are designed using advanced software based on specific requirements like load-bearing capacity and aesthetics. These structures primarily use steel, but may also include aluminum or specialized concrete, ensuring durability and flexibility. Components are fabricated in a factory under controlled conditions, which improves precision and speeds up production. Once completed, the parts are transported to the site for quick assembly, often through bolting or welding.

The benefits of PEBS include fast construction, cost-effectiveness, flexibility, durability, and energy efficiency. They are used in industrial, commercial, residential, sports, and agricultural buildings. While components are standardized, designs can be customized to suit unique needs. Additionally, PEBS are more sustainable, with less waste and potential for material recycling.





MIG/Arc welding and gas cutting, while both used in metalworking, serve fundamentally different purposes: arc welding is a fusion process that uses an electrical arc to generate intense heat, melting and joining metal pieces, whereas gas cutting employs a high-temperature flame from a fuel gas and oxygen mixture to oxidize and sever metal.

Essentially, arc welding is for building and repairing, creating permanent bonds between metal components through various techniques like MIG or TIG welding, while gas cutting is for shaping and dividing, efficiently cutting through ferrous metals with a controlled oxidation process. Therefore, one joins, and the other severs, each utilizing distinct heat sources and chemical reactions to achieve their respective outcomes



# CANOPY & FALSE CEILING



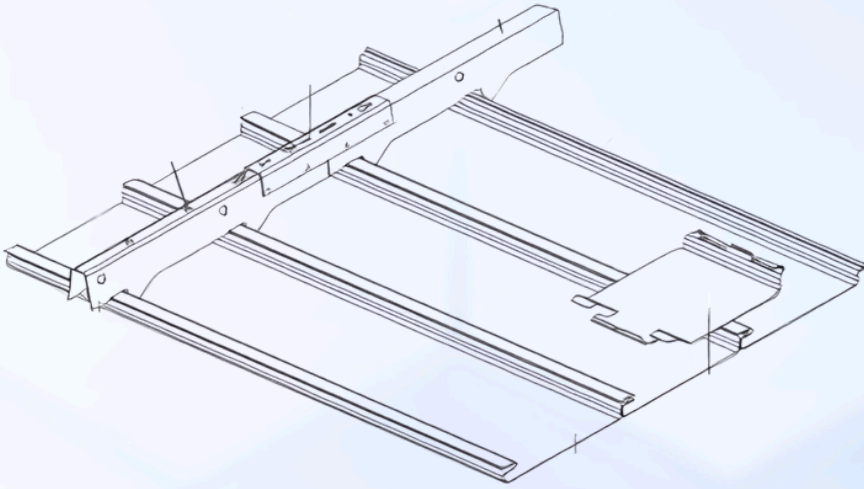
Petrol pump canopies utilizing PEB technology offer a robust and efficient solution for providing weather protection and enhancing brand visibility at fueling stations. These structures, built with prefabricated steel components, ensure durability and structural integrity while allowing for design flexibility to incorporate branding elements and lighting.

The speed of PEB construction minimizes on-site disruption, and the cost-effectiveness makes it a practical choice for petrol companies seeking a reliable and visually appealing canopy that shields customers and equipment from the elements.



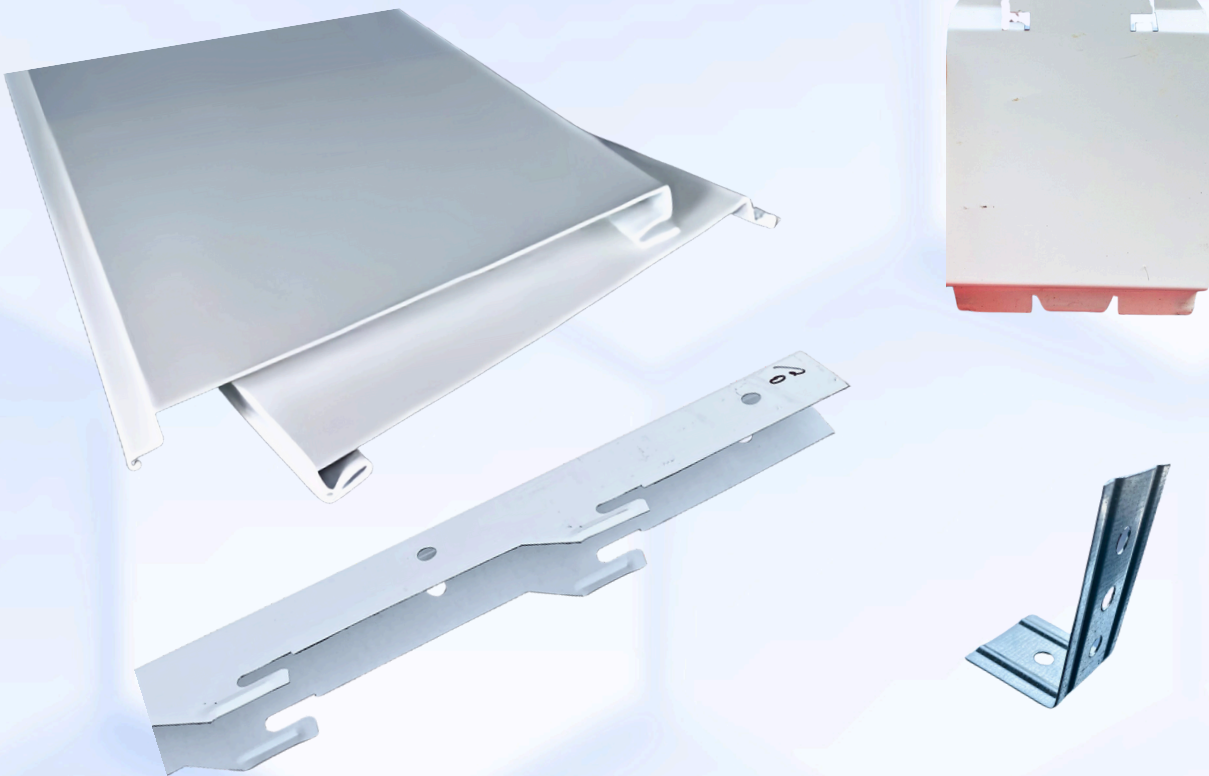
- **Canopy Ceiling:** 150F refers to a type of ceiling system made up of long, narrow metal panels. These panels are typically 150mm wide, hence the "150F" designation.
- **Canopy Application:** While 150F ceilings can be used in various settings, they are often found in canopy structures like petrol stations, toll plazas, and building entrances. This is because they offer a combination of aesthetics, durability, and weather protection.

# 150F CEILING SYSTEM



- 150F Ceiling Panel
- Carrier
- Susp Angular
- Splice
- L - Cleat

150F Canopy False panel 150mm wide x 17mm deep , made out of 0.5mm/0.6 galvanized steel in powder coated / coil coated finish fixed on roll formed carrier made on 0.5mm galvanized steel in powder coated black finish 34.5mm wide and 48mm deep with prongs to hold the panel in a module of 150mm, suspended from roof by 4mm diameter galvanized steel wire rod hanger with Design flexibility: ideal for irregular shaped areas, sloping and curved feature ceilings. Neat closed joints present a smooth uninterrupted appearance. Made to measure: customised panel lengths results in minimal installation time and economy of product due to minimal wastage. Galvalume panels and components: high durability (corrosion resistant), requiring minimal maintenance.





# FACIA & LIGHTINGS



Petrol pump canopies utilize a combination of faescia, RVI, and linear lights to create a functional and visually appealing space. The faescia, a trim running along the canopy's edge, provides a finished look and serves as a mounting surface for signage and lighting, while the Retail Visual Identity (RVI) dictates the overall brand presentation through color schemes, logo placement, and design, ensuring a consistent and recognizable image. Linear lights, often LED-based, provide efficient and uniform illumination, enhancing safety and visibility for customers. These elements work together to create a modern, well-branded, and safe environment, contributing to a positive customer experience and reinforcing the petrol station's identity.

# • WATER GUTTER & FLASHING SHEETS



Water gutters and flashing sheets are essential components of a petrol pump canopy's water management system. Gutters, strategically placed on the canopy's , collect rainwater and channel it away through downspouts, preventing uncontrolled runoff that could lead to erosion or safety hazards. Flashing sheets, typically made of durable, waterproof materials like aluminum or steel, are installed at joints and seams, such as where the canopy meets supporting columns or around penetrations, to create a watertight barrier. Together, these elements ensure that rainwater is efficiently directed away from the structure, protecting it from water damage, maintaining a safe environment for customers and staff, and prolonging the canopy's lifespan.



# WALL BARRICADING



Wall barricading with sheets involves creating a temporary or semi-permanent barrier using sheet materials. This method is employed in various scenarios, each with its own specific requirements :

## Common Applications:

- Construction Sites: To enclose work areas, preventing unauthorized access and containing dust or debris.
- To create temporary walls for weather protection.
- To provide visual barriers for safety.
- Crowd Control: To direct pedestrian flow at events or in public spaces.
- To create temporary partitions or enclosures.
- Security: To secure perimeters or restrict access to sensitive areas.
- To create temporary security walls.
- Temporary Partitions: To divide interior spaces, in warehouses, or large open spaces.





## WORKMANSHIP



**Whatever Good Things We Build,  
Will End Up Building Us**

Bhavani Engineering Works delivers exceptional workmanship through a dedicated team of over 100 skilled professionals. We prioritize precision in fabrication/ Canopy False ceilings Roofing system installations, adhere to strict quality control and safety standards, and utilize advanced techniques to ensure durable, aesthetically pleasing steel structures. Our commitment to detail and collaboration guarantees projects that consistently exceed client expectations, solidifying our reputatioBuildn for excellence in PEB, metal roofing, and false ceiling installations.



# OUR ESTEEMED PRODUCTS LABEL

---





# OUR COLLABORATIONS

Empowering Your  
Enterprise for Success



## BHAVANI ENGINEERING WORKS

# 59-4-8/1, VIDYA NAGAR,  
RAJAMAHENDRAVARAM -05, A.P. INDIA  
WORK SHOP: #118-1-231, NEAR HANUMAN SAI  
TEMPLE, MADHURAPUDI,  
RAJAMAHENDRAVARAM -02, AP, INDIA.



+91 9393934959



[Bhavaniengineerings.in](http://Bhavaniengineerings.in)



[bhavaniengineering  
works@srjy@gmail.com](mailto:bhavaniengineeringworks@srjy@gmail.com)