

Who Controls Idaho Elections?

Ten Shocking Facts about Election Fraud in Idaho

Are Idaho Elections Rigged?
The Idaho Sheriff

Eye On Elections

Teresa Roth

Shocker #10—Freemasons Next Door

Masonic Blue & Gold Two Pillars Masonic Eye

The official website of the
Idaho Legislature

Idaho was founded by, and has always been governed by Masons.

DoubleTree by Hilton Tampa Rocky...

Harborview Cafe

Tenex Software Solutions

The Westin Tampa Bay

W Courtney Campbell Cswy

Shriners International (Headquarters)

Company that controls Idaho Elections
3101 N. Rocky Pt. Dr.

Coincidence or Conspiracy?

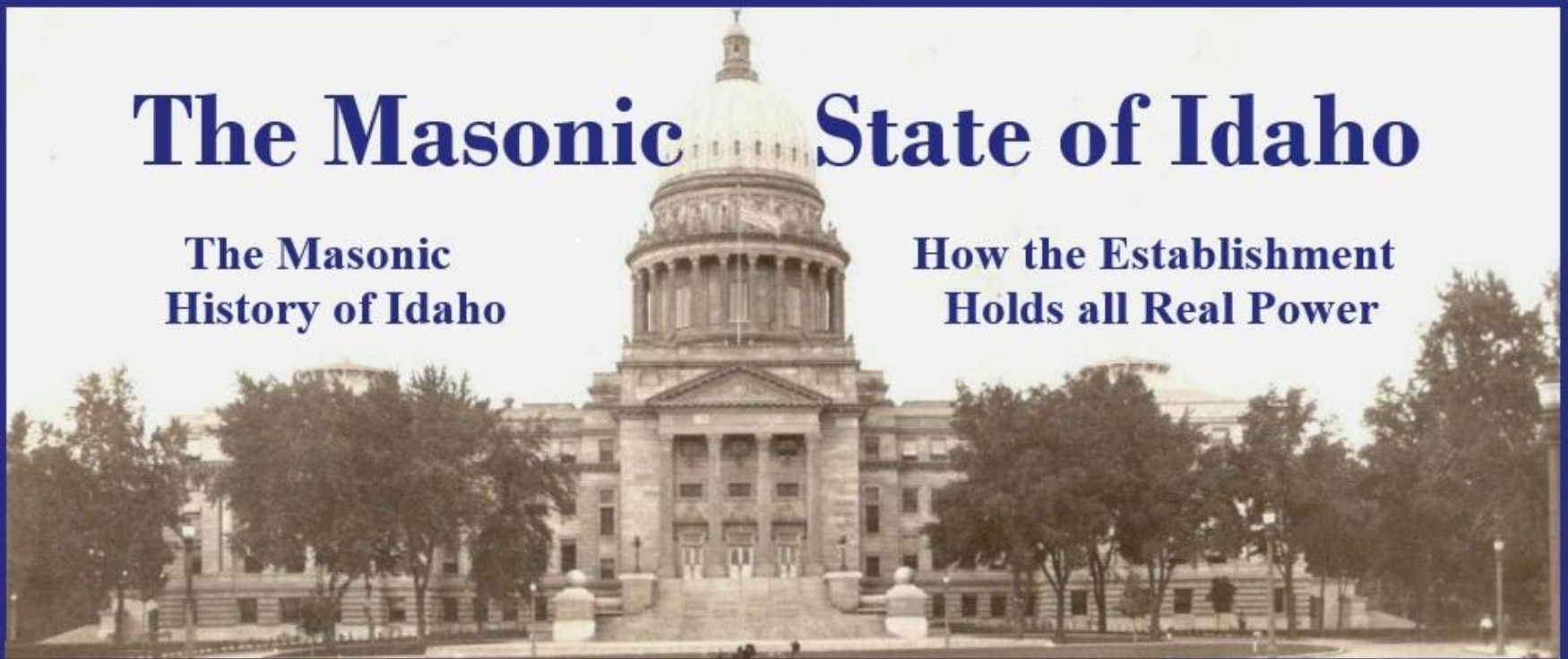
Headquarters of a powerful Masonic Secret Society
2900 N. Rocky Pt. Dr.

- The **Liberty Without Compromise** podcast recently hosted Teresa Roth of **Eye on Elections** to discuss **Rigged Elections in Idaho**.
- This file provides visual aids and links to articles offering more details about the **Ten Shocking Facts about Election Fraud** presented in the video.

The Masonic State of Idaho

The Masonic
History of Idaho

How the Establishment
Holds all Real Power



Masonic Blue & Gold

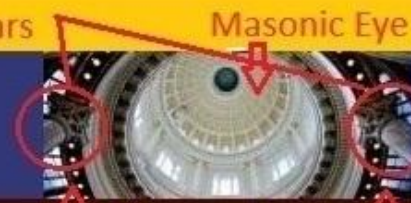
Two Pillars

Masonic Eye



The official website of the

Idaho Legislature



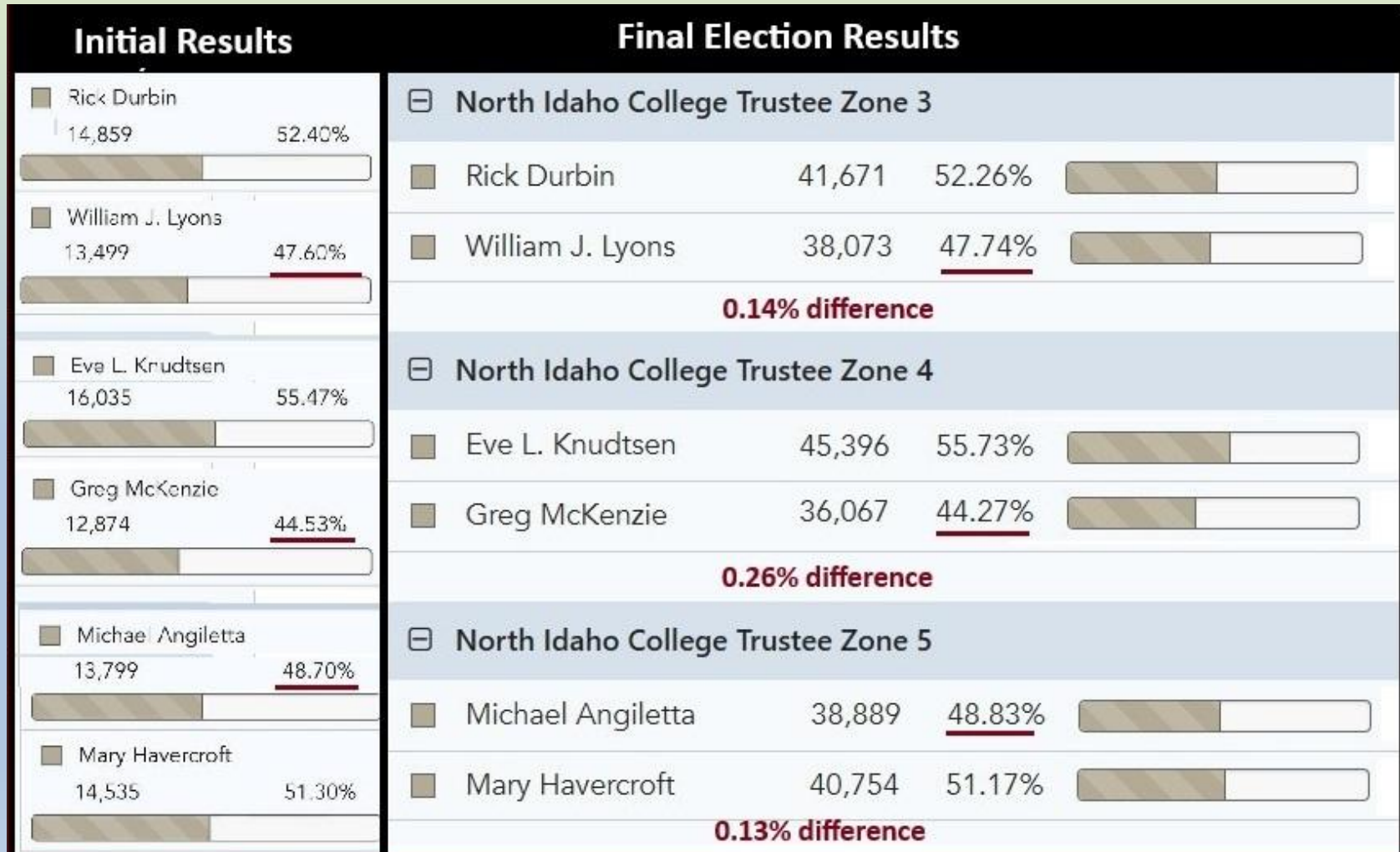
Masonic sunrays



- Before walking through problems with Idaho elections, Ms. Roth discusses the **relationship between Freemasonry and election fraud**.
- Her series on the **The Masonic State of Idaho** shows how Freemasons have controlled Idaho's government since its founding.
- The influence of **Secret Societies** explains why political leaders who should be concerned about election fraud **refuse to acknowledge obvious problems**.

Shocker #1: Undeniable Fraud in NIC Trustee Race

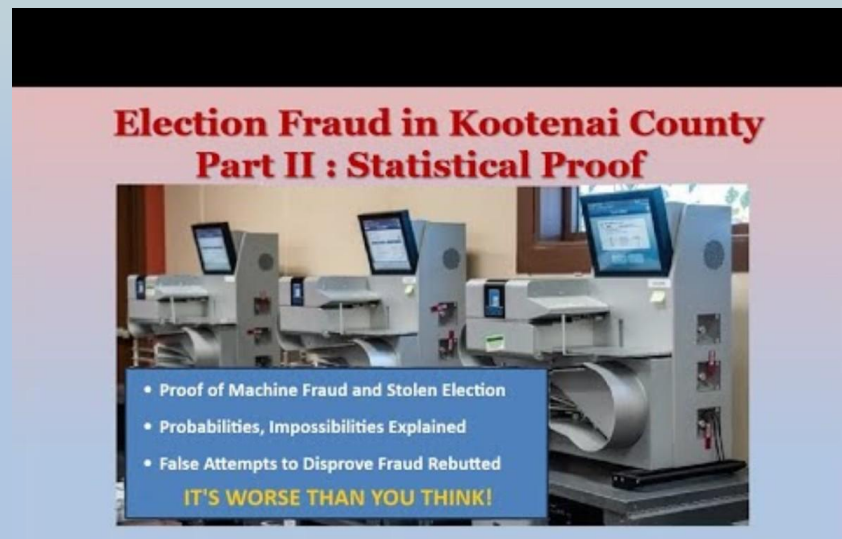
- Initial Results **EXACTLY match** Final Results for ALL 3 NIC. No other races were close. This is **STATISTICALLY IMPOSSIBLE**—indicates machine fraud.



Initial Results posted 11:30 PM Tuesday included an arbitrary mix of Early and Absentee ballots. They EXACTLY matched the Final Results, within 00.25% (1/400) for all three NIC Races.

Why the NIC Trustee election Proves Fraud

- Election results are often suspicious. Why was the NIC Trustee race special?
- There were 20+ races on the Nov 2024 ballot. THREE were for NIC trustees.
- The “initial results” were reported at 10 pm before ANY election-day votes were counted. **INITIAL results** of ALL THREE NIC Trustee races matched the **FINAL results** almost exactly. **This is statistically impossible!!!!**
- **NO other races behaved in this way.** Most were off by 2-5%.



E-fraud in KC Part I explains how the NIC races **PROVE** machine fraud in Idaho.

E-fraud in KC Part II explains the math and rebuts attempts to disprove fraud.

Our entire political class depends on fraudulent elections to maintain power.

Shocker #2 – BOCC ignored proof of fraud.

- We wrote articles & emails detailing **proof of election fraud**.
- **We informed BOCC, Clerk, KCRCC leaders BEFORE certification.**
- We attended BOCC Canvassing Meeting, **Nov-14-2024**
 - Commissioners admitted to knowing about problem. **Refused to investigate.**



The candidates whose elections were stolen were endorsed by KCRCC, but KCRCC leadership REFUSED to investigate or acknowledge fraud.

How can this be?

The article [Was the NIC Election Trustee Stolen? Hint: Yes](#) includes proof of fraud presented to authorities BEFORE certification.

Video of the [BOCC Canvassing Meeting](#) shows the commissioners were aware of problems but refused to investigate and ignored fraud

[Tabulators—the Politics of Fraud](#) explains why politicians fear machine fraud.

Why Not Request a Recount?

Shocker #3 By law, recounts **CANNOT** be done by hand. Electronic tabulators must be used.

TITLE 34 ELECTIONS
CHAPTER 23 RECOUNT OF BALLOTS

34-2313. RECOUNT PROCEDURES FOR AUTOMATED TABULATION SYSTEMS. (1) To ensure the accuracy of automated vote tabulation systems, the county clerk shall follow the recount procedures provided in this section.

(2) The votes from a random selection of ballots shall be tallied by hand and the votes from the same ballots shall be tabulated by an electronic ballot tabulating system. For statewide and federal office or a statewide measure, the number of ballots to be tallied and tabulated shall be equal to at least two (2) precincts of the ballots cast in each county. For all other offices or measures, the number of ballots to be tallied and tabulated shall be equal to the greater of one hundred (100) or five percent (5%) of the ballots cast for the office or measure, distributed by county where applicable.

(3) For a statewide or federal office or a statewide measure, if the results of the hand-tally and the automated vote tally system tabulation within the county differ by one-fourth of one percent (.25%) or less, the remaining ballots shall be recounted using automated vote tabulating systems. Otherwise, the remaining ballots shall be recounted by hand.

(4) For other offices and ballot measures, if the results of the hand-tally and electronic vote tabulating system tabulation differ by less than one percent (1%), or two (2) votes, whichever is greater, the remaining ballots shall be recounted using automated vote tabulating systems. Otherwise, the remaining ballots shall be recounted by hand.

History:

[34-2313, added 2011, ch. 285, sec. 24, p. 787.]

- **Recounts are useless.** Hand counts disallowed. No access to ballots.
- **Post-election Audits are useless,** cannot identify fraud.
 - Even years only—Local races, cities, school districts **NEVER** audited.
 - Only one countywide race audited per county. Only 5% of precincts.
- **It's nearly impossible to overturn an election after certification.**

Lots of Problems with Tabulators

Shocker #4—ESS manager operated tabulators

- Proprietary software, thumb drives, never examined.
- Log files/documentation private, exempt from PRR;
- **No records of software updates**, ESS owned by private equity



If there are “backdoors”, ESS Consultant running tabulators would have them.



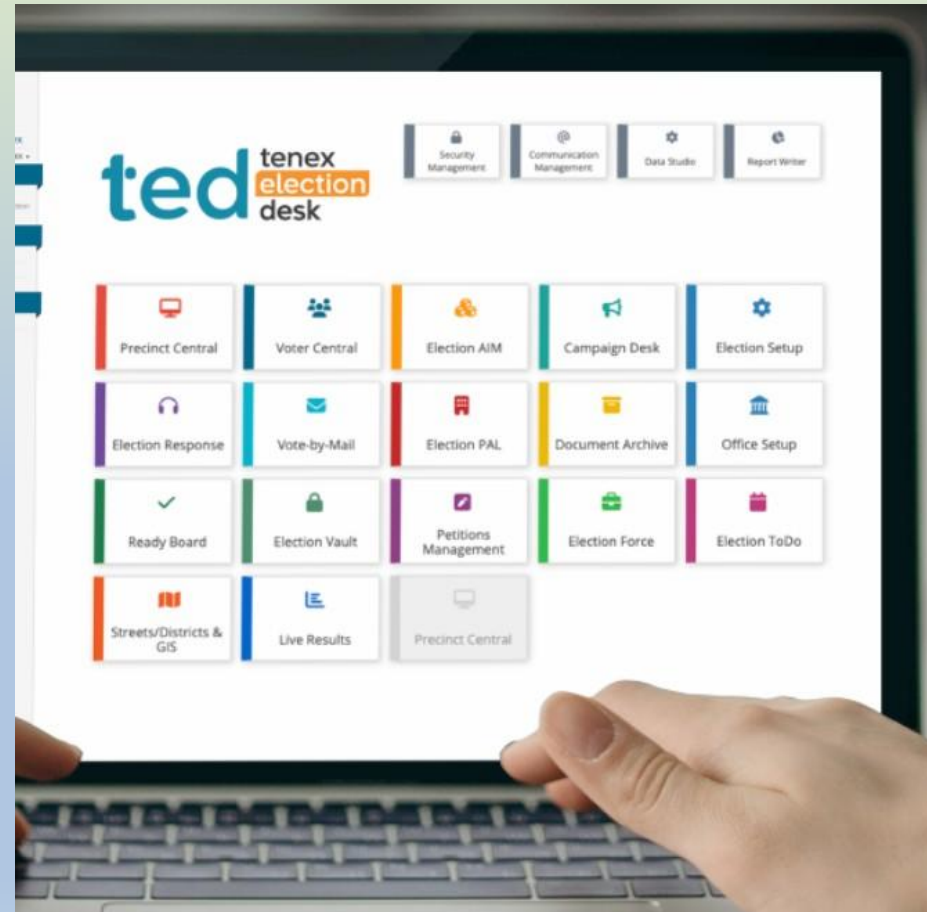
Tabulators can communicate wirelessly without internet.

Shocker#5 – Tenex Software is Fully Integrated

ALL of Idaho's Election Data in One System!!

What could POSSIBLY Go Wrong????

- Electronic Poll Books
- Election Night Reporting
- Voter List Management
- Online Registration
- Election Info Websites
- Election Day Help Desk
- **Print-on-Demand Ballots**
- **Absentee Ballot Management**
- Asset Inventory Management
- Election Worker Management
- Document Archive
- Campaign Finance Reporting



In a **2022 presentation in Idaho Dr. Frank** showed proof that Tenex generated fraudulent registrations and fraudulent votes, in the 2020 election.

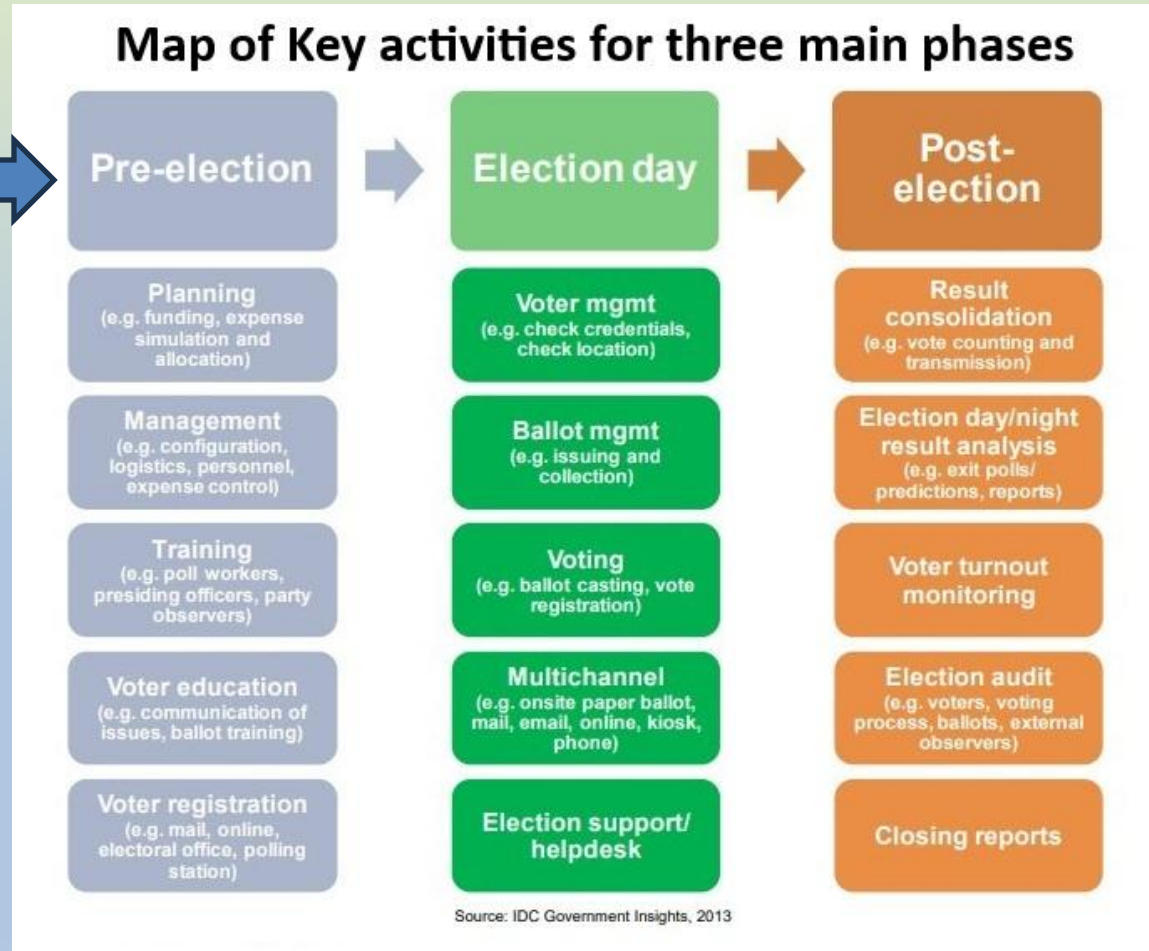
Shocker #6—Tenex has only 70 Employees

- Tenex could not have developed the TED platform by itself.
 - If Tenex didn't write the Software, then WHO????

Scytle developed fully integrated, “End-to-end” Election Management software by 2013

Scytl holds 40+ Cryptography patents

Scytl software hosted on AWS Cloud Network



Giving one program access to ALL data makes cheating easy; impossible to detect.
See the article [Phantom Election Management Software](#) for more details.

Shocker #7—Tenex runs Scytl software

- Scytl—Global leader in **encryption, digital security**.
 - Holds' patents that ALL ETC's need to ensure security.
 - May have “licensed” software to other ETCs besides Tenex!!
- Scytl “bankruptcy” in 2020. Quick sale of Assets
 - **No accountability. No liability.**
 - **No one knows** who holds keys to Scytl's encryption.



- Scytl HQ in Tampa is
- 4 miles from Tenex,
 - 2 miles from airport
 - 1 hour by air to Boca Raton/Smartmatic

Evidence is overwhelming that Scytl controls Idaho elections. Dr. Douglas Frank has confirmed. For details see [Foreign Entities Control Idaho Elections.](#)

Shocker #8—Pollbooks & Tabulators linked

TITLE 34 ELECTIONS
CHAPTER 24 VOTING BY MACHINE OR VOTE TALLY SYSTEM
34-2410. SPECIFICATIONS FOR VOTING MACHINES OR VOTE TALLY SYSTEMS.

(1) No voting machine or vote tally system shall be approved by the secretary of state unless it is constructed so that it:

(a) Secures to the voter secrecy in the act of voting.

.....

(2) A vote tally system shall be:

(a) Capable of correctly counting votes on ballots or ballot cards on which the proper number of votes have been marked for any office or question or issue that has been voted.

.....


(3) No vote tally system shall be connected to the internet at any time, and no vote tally system shall receive or transmit data through wireless communications. The provisions of this subsection shall not apply to electronic poll books authorized pursuant to section 34-1106A, Idaho Code.

↑ ↑ ↑ ↑
Section 3, allowing pollbooks to communicate wirelessly with tabulators, added in 2024. ???? WHY????

- Parts 1 & 2 specify capabilities and security requirements for tabulation machines.
- **Part 3 makes no sense!** Ban on wireless data should apply to TENEX pollbooks.
- The article **Debunking the myth of Secure Elections** shows how the SOS intentionally obscures known problems and **provides false assurances to voters.**

Shocker #9—Voter DB stores Personal Data

- Tenex Voter List software can link to many other data sources.



Voter Central
All-inclusive voter management platform

Complete voter record in one place
Users can access vast amounts of information in the voter profile. Voter Central tracks changes and transactions for each voter, stores images and documents associated with the voter, and maintains record of voting history.

The future of voter registration and management
Why is "extensive data" about voters stored?
Streamline your workflow with end-to-end management of voter registration, voter records, and provisional ballots. Stores and maintains extensive data about the voter with an easy-to-use search function. Integrates with various departments to notify teams when changes need to be made to the voter record, such as a change of address.

Why is software changing voter registration data?

- HB 339 allows collection of **personal data on all Idaho voters**
- Tenex Software can serve as **Backbone for Digital Id in Idaho.**

For more details see: [Digital Elections, Digital Identities and Data Collection disguised as Election Integrity](#)



Shocker #10—Freemasons Next Door

Masonic Blue & Gold Two Pillars Masonic Eye

The official website of the
Idaho Legislature

Masonic sunrays

DoubleTree by Hilton Tampa Rocky... Harborview Cafe
Tenex Software Solutions
The Westin Tampa Bay

W Courtney Campbell Cswy 60 W Cour

Shriners International (Headquarters)

Company that controls Idaho Elections
3101 N. Rocky Pt. Dr.

Coincidence or Conspiracy?

Headquarters of a powerful Masonic Secret Society
2900 N. Rocky Pt. Dr.

Shriner's HQ is connected to every Masonic lodge in USA.
Masons have controlled Idaho's government since its founding.
Read [The Masonic State of Idaho](#) to Learn more.

Solutions Exist



Legislation allowing for online Registration and electronic pollbooks must be rescinded. **Responsibility must return to counties!**

Meanwhile counties can assure honest elections by Transparent Tabulation.

Visit the Eye on Election website or request the EonE newsletter to learn more.