

playseape

competition 2025



**COMPETITION
PERIOD**
1 MEI - 30 JUN
[60 DAYS]



SITE
TAMAN TASIK
SHAH ALAM



TOTAL PRIZE
RM39,000

In Collaboration
with:



**Institute of
Landscape
Architects
Malaysia**
(ILAM)

Managed by:



**ILAM
CENTRE OF
EXCELLENCE**

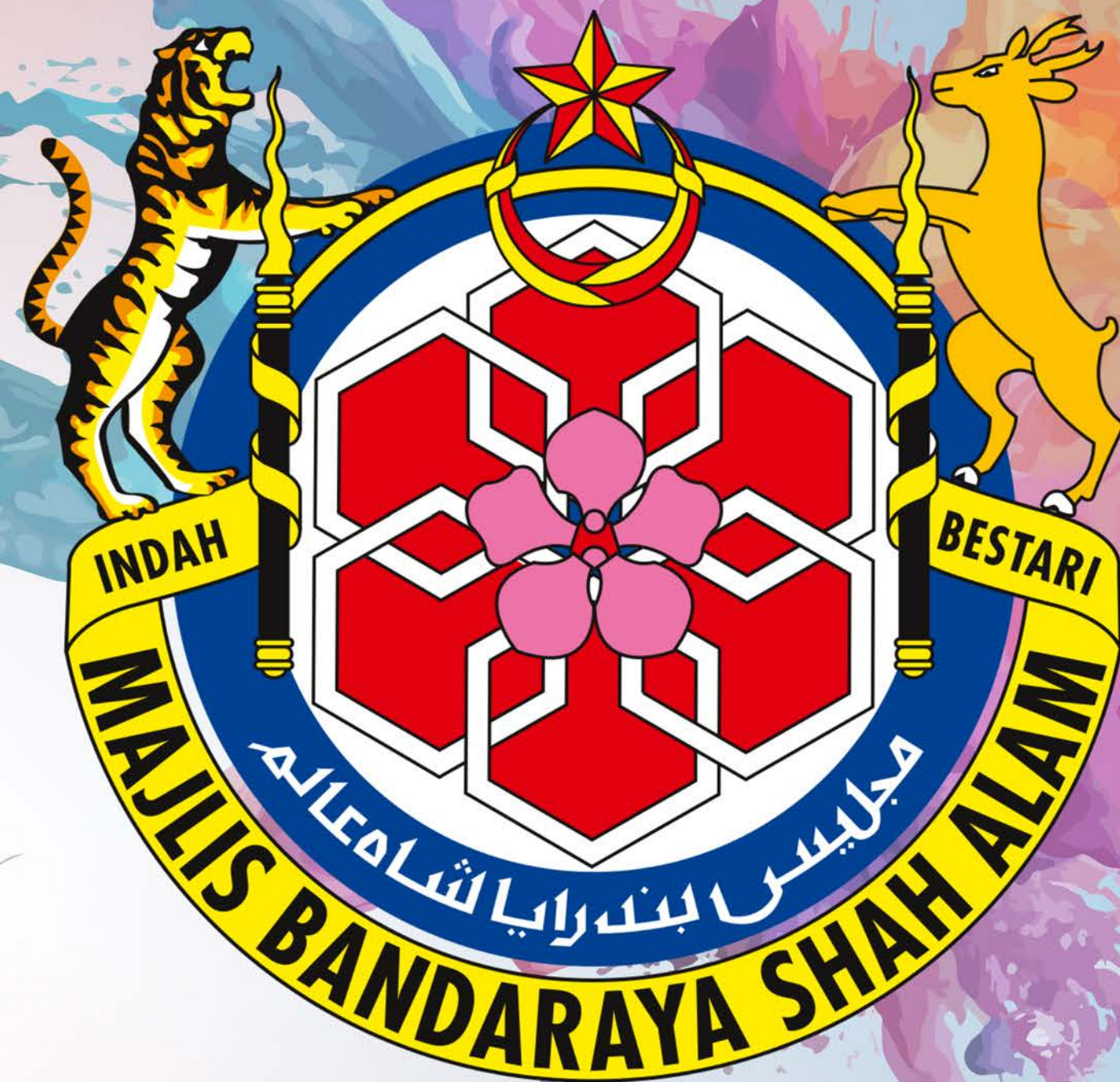
An Initiative of:



**Landscape
Architecture
Agenda 2050**
Lead/Aspire/Alive

my nbs
Nature-based Solutions

HOW TO PARTICIPATE?



SCAN ME

www.playscapembsa.com

HOW TO PARTICIPATE?

- 01 Download and complete the Entry Form**
The form should be submitted together with the design
- 02 Join the Project Briefing Session**
- 03 Preparing Design: A1 size (file size max 200Mb), maximum 2 pieces**
The form should be submitted together with the design
- 04 PDF file and entry Form to be submitted online through uploading to any online drive**
[One drive, google drive etc] and E-Mail the download link to us at playscapembsa@outlook.com, and to make it open / public.

CLOSING DATE
30 JUNE 2025
MONDAY
6.00PM

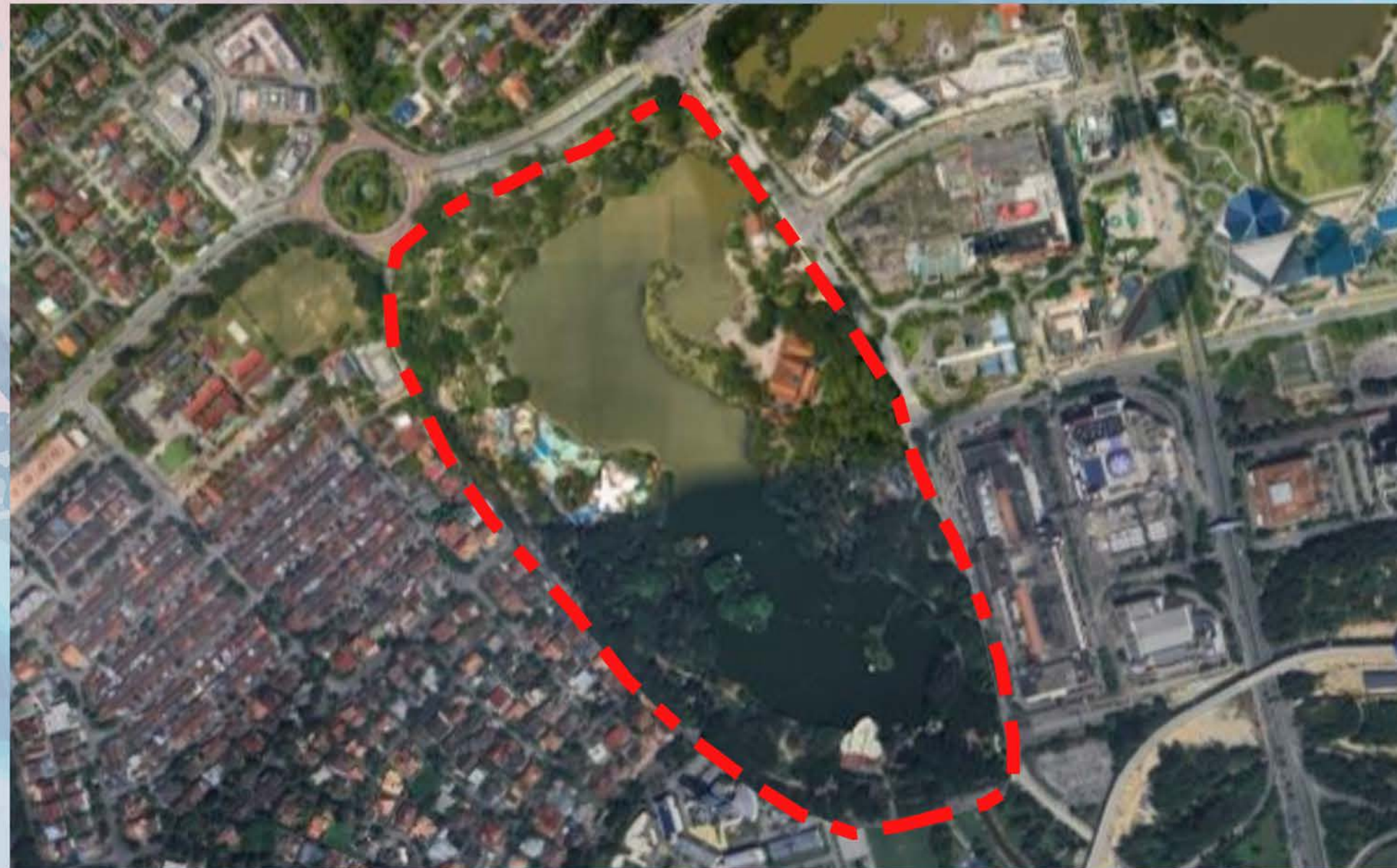
SUBMISSION/ENQUIRES
playscapembsa@outlook.com

ILAM Centre of Excellence (ICE) Sdn. Bhd.
Unit. No. 4A, First Floor, Commercial Lot Nadi@15,
Jalan Pahang, Precinct 15,
62050 Wilayah Persekutuan Putrajaya, Malaysia.
TEL : +(60)19-881 7016 (Office hour only: 9am-6)

TIMELINE



SITE BACKGROUND



60 Days
Competition Duration

6 Winners
(Sketches/3D/Graphic)

RM 39,000
Total Prize

Taman Tasik Shah Alam is a public recreational park located in Shah Alam, Selangor. It was designed by the famous landscape architect, **Fumiyaki Takano from Japan**. The early development of Shah Alam as the capital of Selangor. The park was developed as part of the Shah Alam green city planning, which emphasizes a balance between urban development and nature conservation.

Taman Tasik Shah Alam is designed with the theme of "**a garden within the city**", combining elements of natural landscapes, artificial lakes, and local cultural elements. It features tropical landscape architecture with lush green plants, reflective pathways, and structures that harmonize with the surroundings.

Among the main attractions at Shah Alam Lake Park are **three artificial lakes** which are the main centerpiece of the park. As well as jogging tracks and walking paths that allow visitors to enjoy the beauty of the landscape. In addition, the park also houses the **Japanese Friendship Garden**, which features Japanese cultural elements such as tea houses and Zen landscapes.

COMPETITION SITES

ACTIVE AREA



PASSIVE AREA



FOR MORE SITE PICTURES VISIT WWW.PLAYSCAPEMBSA.COM

6 WINNERS

TOP 3 GRAND PRIZE



RM10,000



RM10,000



RM10,000

SPECIAL AWARDS (MAYOR CHOICE)



RM3,000
CREATIVE AWARDS



RM3,000
SUSTAINABLE AWARDS



RM3,000
INNOVATIVE AWARDS

SUBMISSION GUIDES

FORMAT

- A1 size maximum 2 Board (PDF file)
- File size max 200Mb

SUBMISSION REQUIREMENTS

- CONCEPT write up (English/Malay)
- DESIGN in the form of Sketches, artist impression, 3D rendering, graphic
- Submit an cost estimation of the proposal including Hard landscape and Soft landscape element and material. Overall construction cost must not exceed RM5 million

BONUS

- Any form of video showcasing the design such as 3D rendering or walkthrough is encourage but not compulsory

ELIGIBILITY

- Competition is open to all (Local and International)
- Individu Participation or Group Participation (max 5)
- Students Participation (max 5 + 1 lecturer)

ENTRY FEES

- No entry fee required

JUDGING CRITERIAS

- Design & Concept (30%)
- Constructable (20%)
- Material (20%)
- Nature Base Solution (20%)
- Cost Estimate (5%)
- Bonus (5%)

JUDGING PROCESS

- STAGE 1 : Shortlisting of Entries
- STAGE 2 : Judging
- STAGE 3 : Final Presentation

NOTE

The criteria and weightage may subject to changes by the jury

TERMS AND CONDITIONS

- A. Participation is open to Landscape Consulting Companies/Playground Manufacturers, IPTA/IPTS Students and Individuals and International
- B. The location boundaries limits for the design proposal determined by MBSA and the Joint Organizer (ILAM)
- C. The Playscape design must prioritize universal design inclusiveness, unique, attractive, and related design features of Shah Alam identity/nature-based design.
- D. Nature playscape design must be 50% nature playscape element and 50% integrated play equipment
- E. The design must consider the aspects of effective, safe, disability-friendly, as well as an elderly landscape.
- F. The materials chosen must be easy to obtain and maintain
- G. Participants are also required to submit an cost estimation price include the Hardscape and Softscape for active and passive area. It is recommended that the cost of the estimated project price not exceed RM5 million for construction.

FAILURE TO COMPLY WITH THE COMPETITION RULES MAY RESULTED IN DISQUALIFICATION!

TERMS AND CONDITIONS

- H. Open participation is individual or group (No more than 5 participants per group. If students, no more than 5 people with 1 lecturer)
- I. Submission of design proposals is in PDF format of A1 size - 2boards do not exceed 200Mb.
- J. Submission of design proposals must be made online (Link) via the email address that will be provided by the Secretariat after the entry form is received.
- K. There is no entry fee. All costs related to the preparation of this design proposal are the responsibility of the participant.
- L. The judging of the competition will be a blind process. Hence, the following details are NOT ALLOWED to be inserted in the submission board – PARTICIPANT NAMES (X), TEAM NAME (X), COMPANY LOGO (X)

FAILURE TO COMPLY WITH THE COMPETITION RULES MAY RESULTED IN DISQUALIFICATION!

REFERENCE IMAGES



FOR MORE REFERENCE PICTURES VISIT WWW.PLAYSCAPEMBSA.COM

PENYERTAAN INDIVIDU/INDIVIDUAL PARTICIPATION



NAMA/NAME

OR

PENYERTAAN BERKUMPULAN/GROUP PARTICIPATION

NAMA

KUMPULAN/GROUP NAME

(Max 5 words)



KETUA

KUMPULAN/LEADER NAME



NAMA AHLI/

MEMBERS NAME



NAMA PENSYARAH/

LECTURER NAME

(For students Competition)

BUTIRAN HUBUNGI/CONTACT DETAILS



ALAMAT/ADDRESS



TEL. NUMBER



E-MAIL

**HURAIAN KONSEP/CONCEPT DESCRIPTION**

TAJUK (tidak melebihi 6 perkataan)/
TITLE (no more than 6 words)

HURAIAN KONSEP /CONCEPT DESCRIPTION (Tidak melebihi 300 patah perkataan/not exceeding 300 words)



SILA MASUKKAN LAKARAN KONSEP DI BAWAH/ PLEASE ENTER A CONCEPT SKETCH BELOW